

# POP



---

HONG KONG PUBLIC OPINION PROGRAM

HONG KONG PUBLIC OPINION RESEARCH INSTITUTE

香港民意研究所 之 香港民意研究計劃

---

**Budget first follow-up survey**

**Press Release**

**March 3, 2020**

# Contact Information

2

- Date of survey: 27-28/2/2020
- Survey method: Random telephone survey conducted by real interviewers
- Target population: Cantonese-speaking Hong Kong residents aged 18+
- Sample size: 512 (including 255 landline and 257 mobile samples)
- Effective response rate: 70.3%
- Sampling error: Sampling error of percentages not more than +/-4%, that of net values not more than +/-8% and that of ratings not more than +/-2.7 at 95% conf. level
- Weighting method: Rim-weighted according to figures provided by the Census and Statistics Department. The gender-age distribution of the Hong Kong population came from “Mid-year population for 2018”, while the educational attainment (highest level attended) distribution and economic activity status distribution came from “Women and Men in Hong Kong - Key Statistics (2018 Edition)”.

# Survey Topic

3

- Appraisal of Budget
- People's satisfaction with the government's strategy in monetary arrangement and other relevant issues
- In-depth analysis by demographics

# Survey Result - Appraisal of Budget

4

## ● Appraisal of Budget

		26/2/2020	27-28/2/2020	Change	Record (Instant and follow-up polls)
Budget	Satisfaction rate	46%	<b>28%</b>	<b>▼18% *</b>	Record <b>low</b> since Mar. 2019
	Dissatisfaction rate	27%	<b>50%</b>	<b>▲23% *</b>	Record <b>high</b> since Mar. 2019
	Net satisfaction rate	19%	<b>-22%</b>	<b>▼41% *</b>	Record <b>low</b> since Mar. 2019
	Rating	54.1	<b>40.2</b>	<b>▼13.9 *</b>	All time record <b>low</b> since Feb. 2018

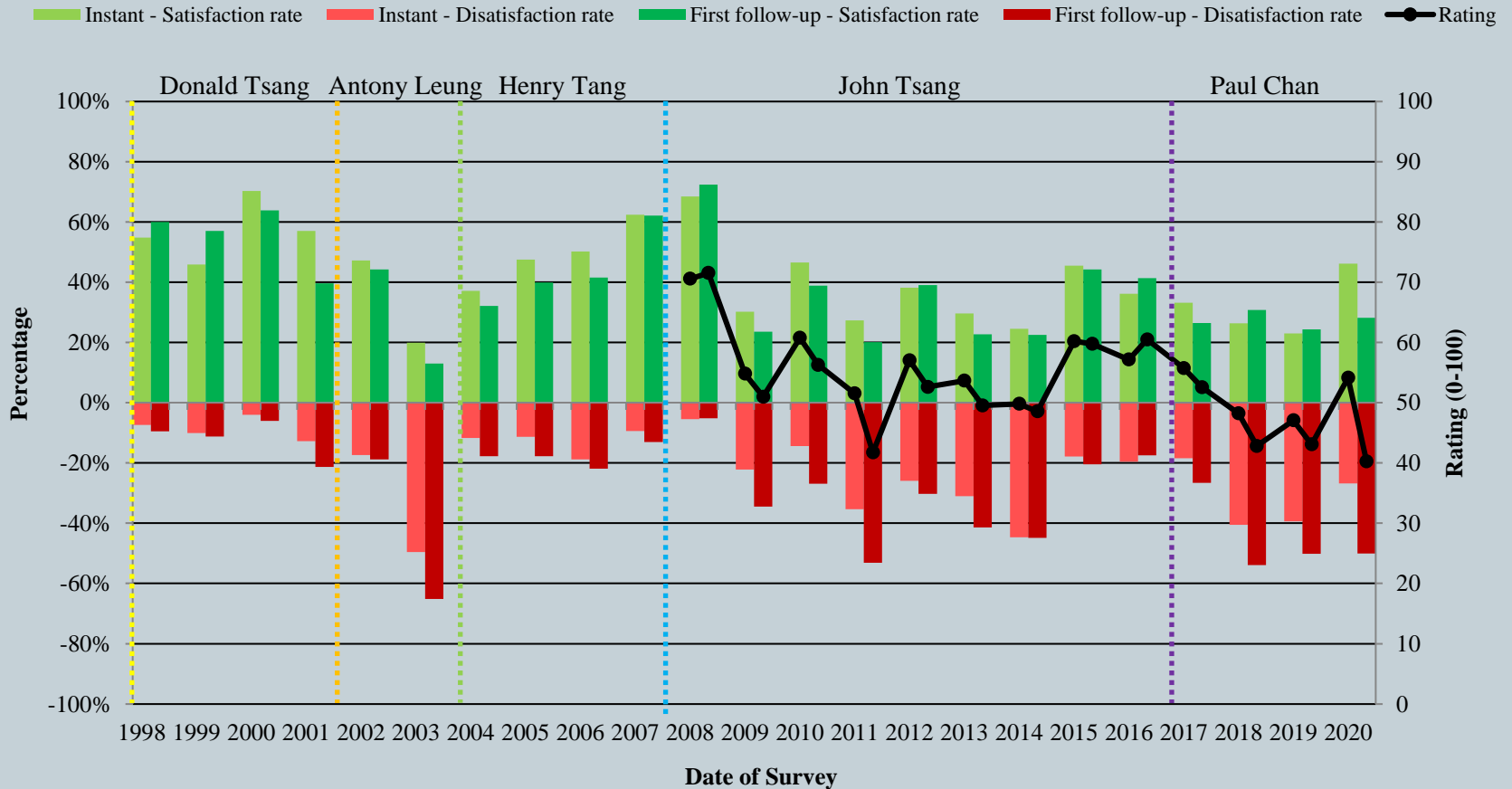
- Our survey showed that people's instant reaction to this year's Budget on the day it was released can be considered positive. After one to two days of media coverage, the reaction turns negative, the satisfaction rating plunges by 13.9 marks to 40.2, registering an all-time low since records began in 2008. This shows people's response has significantly worsened after digesting some information and discussions on the Budget.

\* Significant change

# Survey Result - Appraisal of Budget

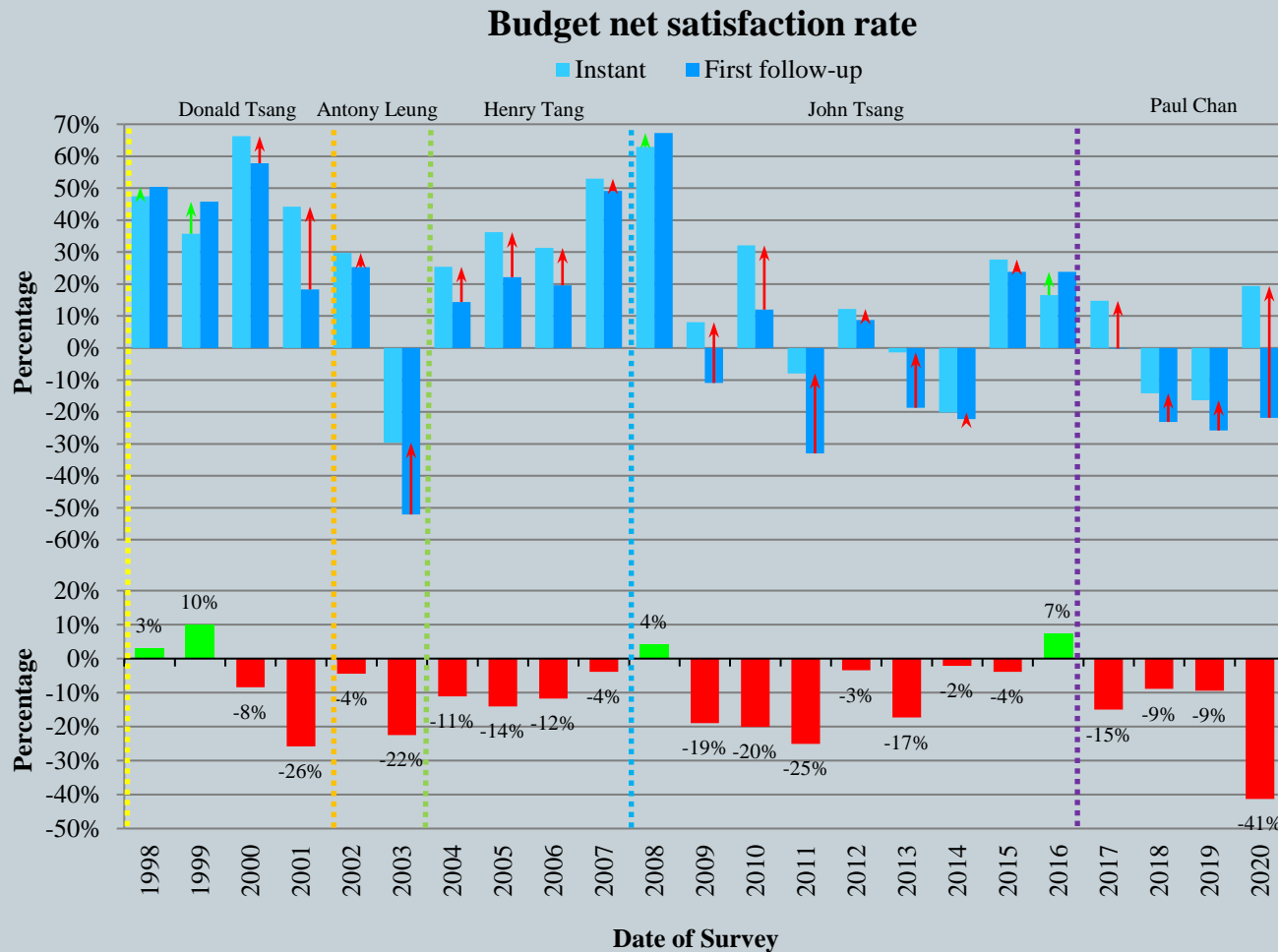
5

## Budget satisfaction rate / rating



# Survey Result - Appraisal of Budget

6



# Survey Topic

7

- Appraisal of Budget
- People's satisfaction with the government's strategy in monetary arrangement and other relevant issues
- In-depth analysis by demographics

# Survey Result - Government's strategy in monetary arrangement and other relevant issues

8

## ● Government's strategy in monetary arrangement

	28/2-1/3/2019	27-28/2/2020	Change	Record (All follow-up polls)
Satisfaction rate	25%	20%	▼4%	Record low since Mar. 2004
Dissatisfaction rate	56%	60%	▲5%	All time record high since Feb. 1998
Net satisfaction rate	-31%	-40%	▼9%	Record low since Mar. 2003
Rating	2.4	2.2	▼0.2*	Record low since Mar. 2003

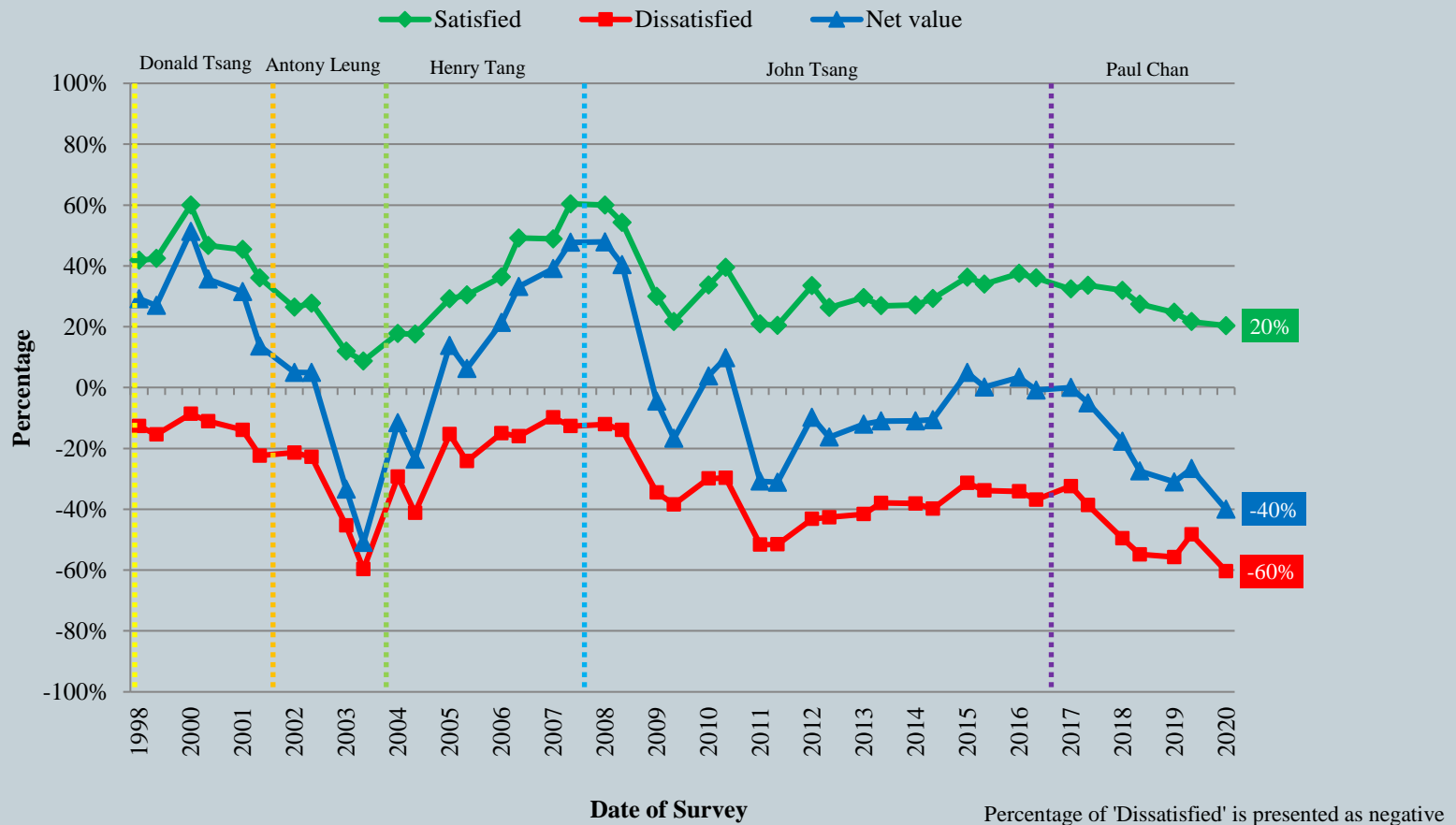
- 20% were satisfied with the government's strategy in monetary arrangement, whereas 60% were dissatisfied, thus net satisfaction stands at negative 40 percentage points, registering a new record low since 2003. The mean value is 2.2, which is close to “quite dissatisfied” in general.

\* Significant change



# Survey Result - Government's strategy in monetary arrangement and other relevant issues

People's satisfaction with the government's strategy in monetary arrangement (Per poll)



# Survey Result - Government's strategy in monetary arrangement and other relevant issues

10

## • Tax system and distribution of wealth in Hong Kong

		28/2-1/3/2019	27-28/2/2020	Change	Record (All follow-up polls)
Tax system	Fair	59%	52%	▼7% *	Record low since Feb. 2013
	Unfair	31%	35%	▲4%	Record high since Mar. 2015
	Net value	28%	17%	▼12% *	Record low since Feb. 2013
Distribution of wealth	Reasonable	23%	24%	▲1%	Record high since Feb. 2019
	Unreasonable	66%	67%	▲1%	Record high since Feb. 2017
	Net value	-42%	-43%	--	Record low since Feb. 2017

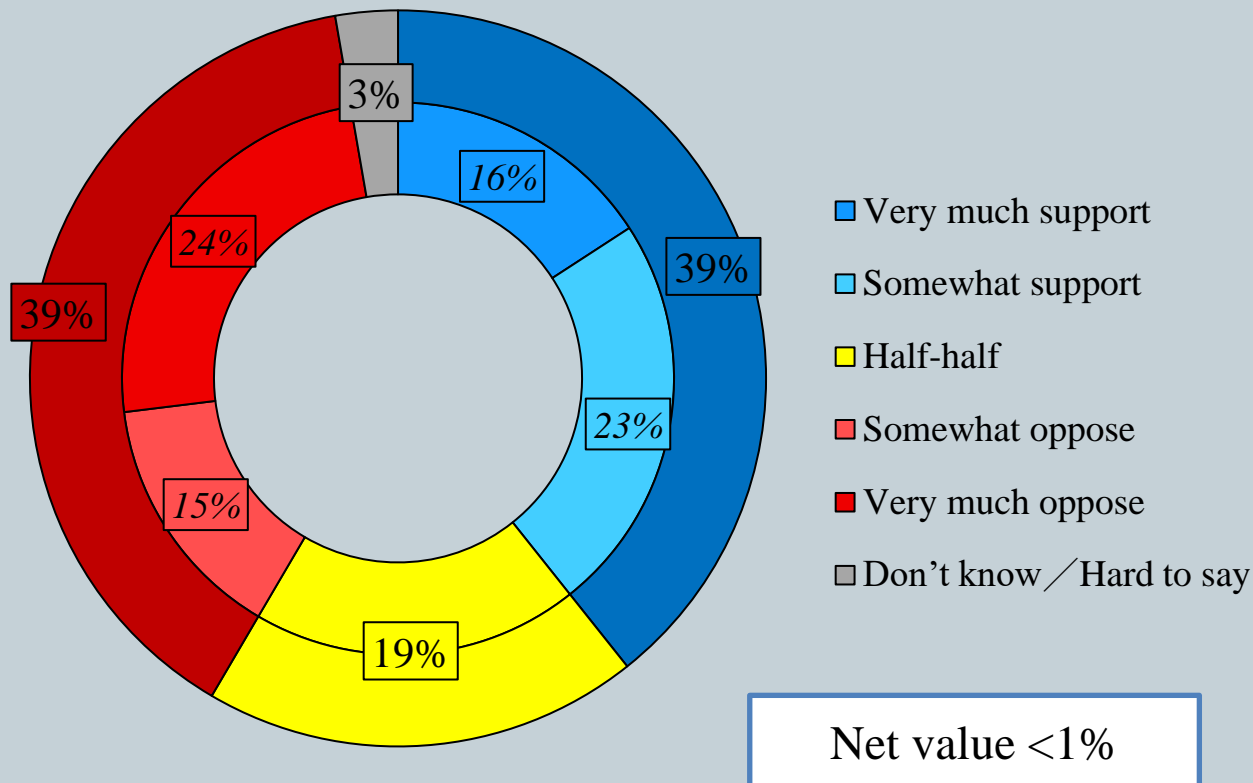
- With respect to Hong Kong's tax system, 52% considered it fair, whilst 35% thought it was unfair. 24% perceived the distribution of wealth in Hong Kong reasonable, as contrast to 67% who regarded it unreasonable.

\* Significant change

# Survey Result - Government's strategy in monetary arrangement and other relevant issues

11

- **Question: How much do you support or oppose the Legislative Council passing the Budget?**



# Survey Topic

12

- Appraisal of Budget
- People's satisfaction with the government's strategy in monetary arrangement and other relevant issues
- **In-depth analysis by demographics**

# Survey Result - In-depth analysis by demographics

13

- **Question: How much do you support or oppose the Legislative Council passing the Budget?**

Age	18 - 29	30 - 49	50 +	Overall
Support	8%	32%	<b>53%</b>	39%
Half-half	17%	20%	20%	19%
Oppose	<b>71%</b>	<b>45%</b>	24%	39%
Mean value	<u><b>1.9</b></u>	<u><b>2.7</b></u>	<u><b>3.4</b></u>	<u><b>2.9</b></u>

# Survey Result - In-depth analysis by demographics

14

- **Question: How much do you support or oppose the Legislative Council passing the Budget?**

Education level	Primary or below	Secondary	Tertiary or above	Overall
Support	<b>63%</b>	<b>40%</b>	23%	39%
Half-half	20%	22%	15%	19%
Oppose	11%	36%	<b>60%</b>	39%
Mean value	<b><u>3.8</u></b>	<b><u>3.0</u></b>	<b><u>2.3</u></b>	<b><u>2.9</u></b>

# Survey Result - In-depth analysis by demographics

15

- **Question: How much do you support or oppose the Legislative Council passing the Budget?**

Social strata	Collectively called “upper class”	Collectively called “middle class”	Collectively called “lower class”	Overall
Support	35%	33%	<b>47%</b>	39%
Half-half	20%	23%	16%	19%
Oppose	<b>44%</b>	<b>42%</b>	33%	39%
Mean value	<u>2.7</u>	<u>2.8</u>	<u>3.1</u>	<u>2.9</u>