

# POP



---

HONG KONG PUBLIC OPINION PROGRAM

HONG KONG PUBLIC OPINION RESEARCH INSTITUTE

香港民意研究所 之 香港民意研究計劃

---

**Latest Tracking Poll Results**

**Press Release**

**June 16, 2020**

# Contact Information

2

- Date of survey: 1-4/6/2020
- Survey method: Random telephone survey conducted by real interviewers
- Target population: Cantonese-speaking Hong Kong residents aged 18+
- Sample size: 1,002 (including 503 landline and 499 mobile samples)
- Effective response: 64.3%
- Sampling error: Sampling error of percentages not more than  $\pm 4\%$ , that of net values not more than  $\pm 7\%$  and that of ratings not more than  $\pm 2.5$  at 95% conf. level
- Weighting method: Rim-weighted according to figures provided by the Census and Statistics Department. The gender-age distribution of the Hong Kong population came from “Mid-year population for 2019”, while the educational attainment (highest level attended) distribution and economic activity status distribution came from “Women and Men in Hong Kong - Key Statistics (2019 Edition)”.

# Survey Topic

3

- Hong Kong people's ratings on ethnic identities
  - Independent ratings
  - The dichotomy of “Hongkonger” versus “Chinese” identity
  - In-depth analysis by age groups

# Survey Result - Hong Kong people's ethnic Identity

4

## • Independent ratings - Strength rating

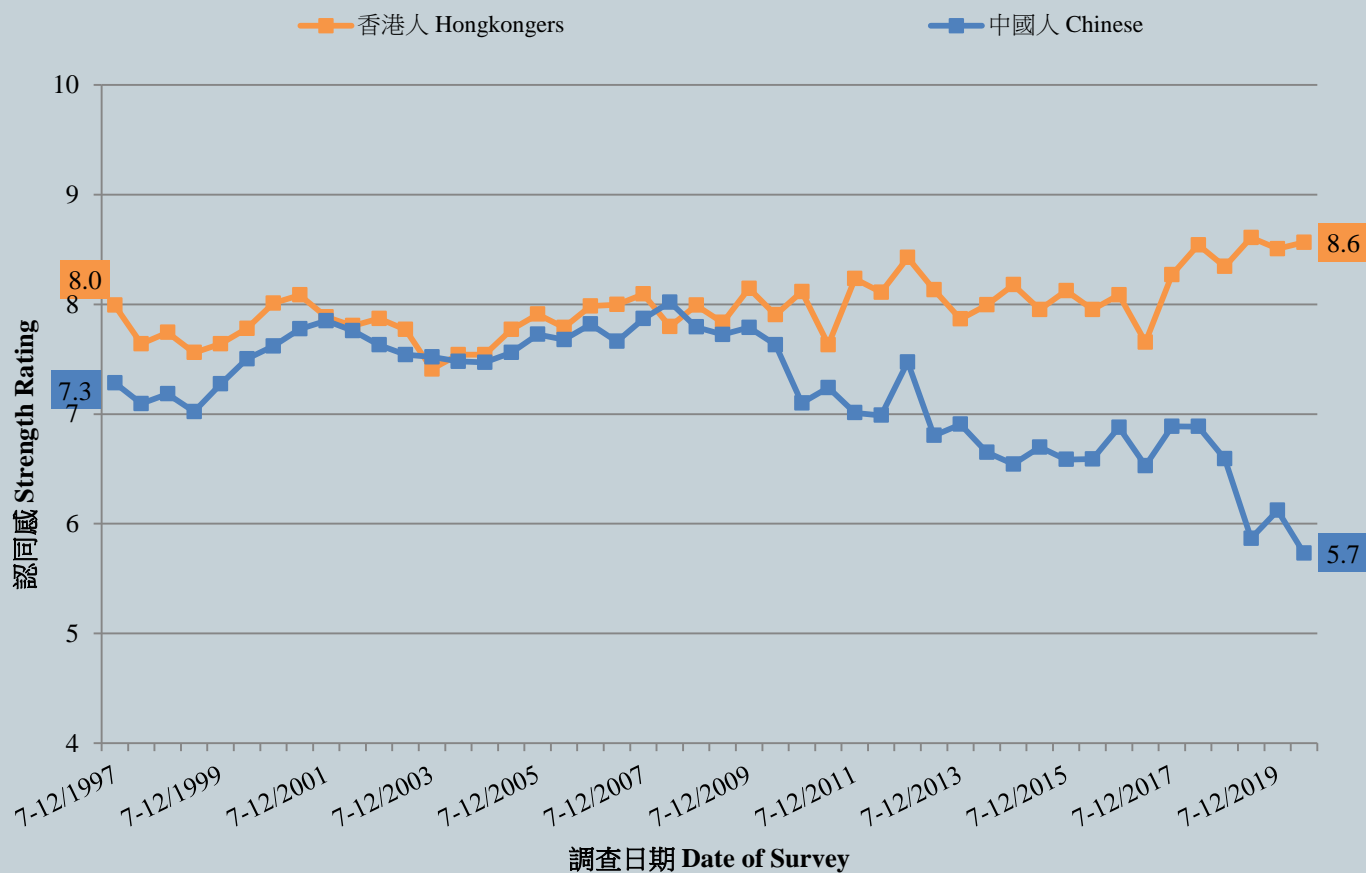
	4-10/12/2019	1-4/6/2020	Change	Record
Hongkongers	8.5	<b>8.6</b>	<b>▲0.1</b>	Record <b>high</b> since Jun. 2019
Asians	7.8	<b>7.8</b>	<b>▲&lt;0.1</b>	Record <b>high</b> since Dec. 2018
Global citizens	7.1	<b>6.9</b>	<b>▼0.2</b>	Record <b>low</b> since Jun. 2019
Members of Chinese race	6.5	<b>6.2</b>	<b>▼0.3</b>	All-time record <b>low</b> since Jun. 2007
Chinese	6.1	<b>5.7</b>	<b>▼0.4</b>	All-time record <b>low</b> since Aug. 1997
Citizens of the PRC	5.2	<b>4.9</b>	<b>▼0.3</b>	Record <b>low</b> since Jun. 2019

- The strength ratings of “members of the Chinese race” and “Chinese” have registered historical lows since 2007 and 1997 respectively.

# Survey Result - Hong Kong people's ethnic Identity

5

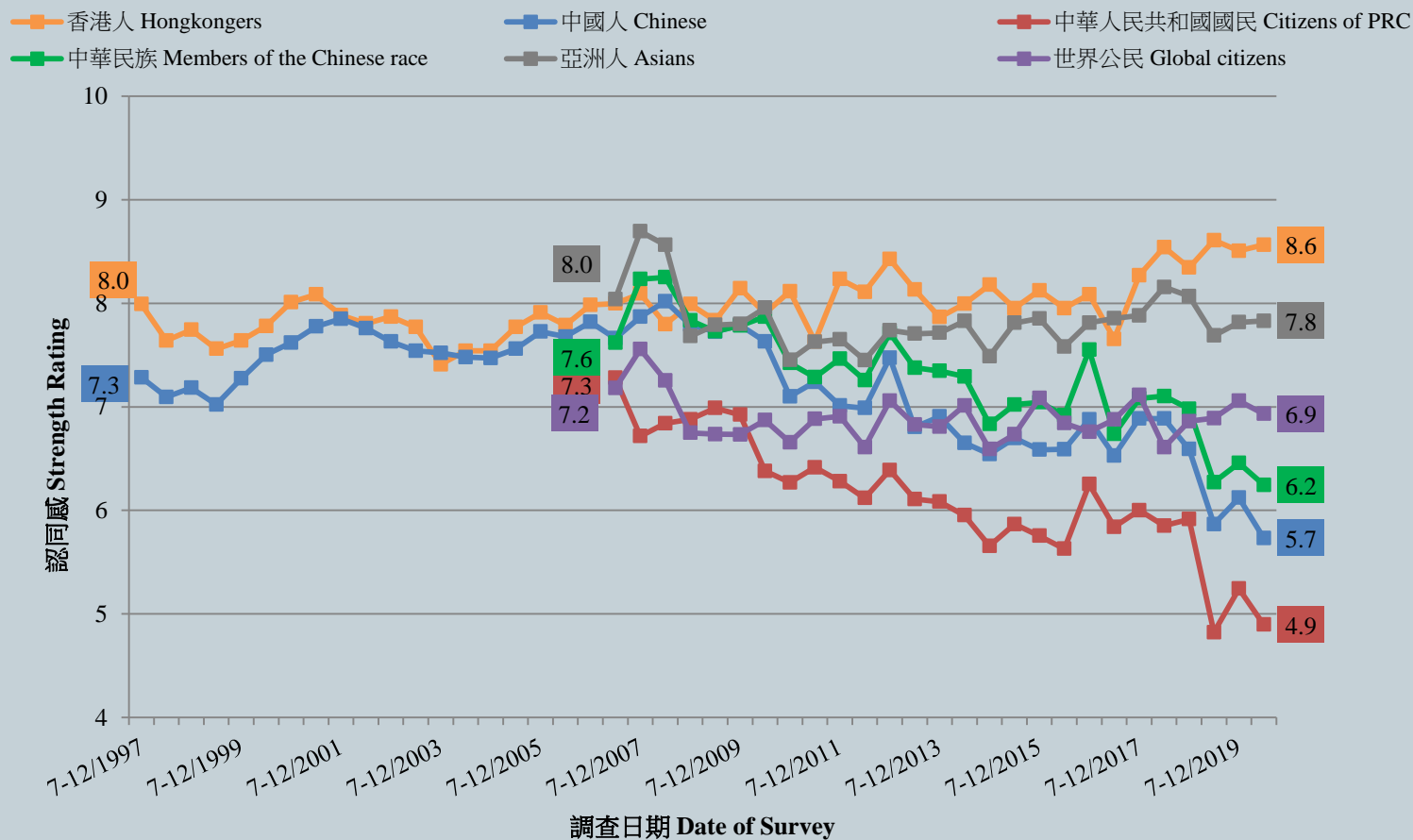
「香港人」、「中國人」身分認同程度評分（半年結）  
Strength of “Hongkongers” & “Chinese” identity (Half-yearly average)  
(8/1997 - 6/2020)



# Survey Result - Hong Kong people's ethnic Identity

6

## 香港市民身分認同感 Strength of identity of Hong Kong People



# Survey Result - Hong Kong people's ethnic Identity

7

## • Independent ratings – Importance rating

	4-10/12/2019	1-4/6/2020	Change	Record
Hongkongers	8.4	8.3	▼0.1	Record low since Dec. 2018
Asians	6.8	6.9	▲0.1	Record high since Dec. 2018
Global citizens	6.6	6.6	▲<0.1	Record high since Dec. 2015
Members of Chinese race	6.0	5.9	▼0.1	All-time record low since Dec. 2008
Chinese	5.6	5.5	▼0.1	All-time record low since Dec. 2008
Citizens of the PRC	5.0	4.8	▼0.2	All-time record low since Dec. 2008

- The importance ratings of “members of the Chinese race”, “Chinese” and “citizens of the PRC” have registered historical lows since 2008.

# Survey Result - Hong Kong people's ethnic Identity

8

## • Independent ratings – Identity Index

	4-10/12/2019	1-4/6/2020	Change	Record
Hongkongers	82.6	<b>83.1</b>	<b>▲0.5</b>	Record <b>high</b> since Jun. 2019
Asians	70.9	<b>72.3</b>	<b>▲1.4</b>	Record <b>high</b> since Dec. 2018
Global citizens	66.7	<b>66.6</b>	<b>▼0.1</b>	Record <b>low</b> since Jun. 2019
Members of Chinese race	60.7	<b>59.2</b>	<b>▼1.5</b>	All-time record <b>low</b> since Dec. 2008
Chinese	57.3	<b>54.6</b>	<b>▼2.7</b>	All-time record <b>low</b> since Dec. 2008
Citizens of the PRC	49.6	<b>46.8</b>	<b>▼2.8</b>	Record <b>low</b> since Jun. 2019

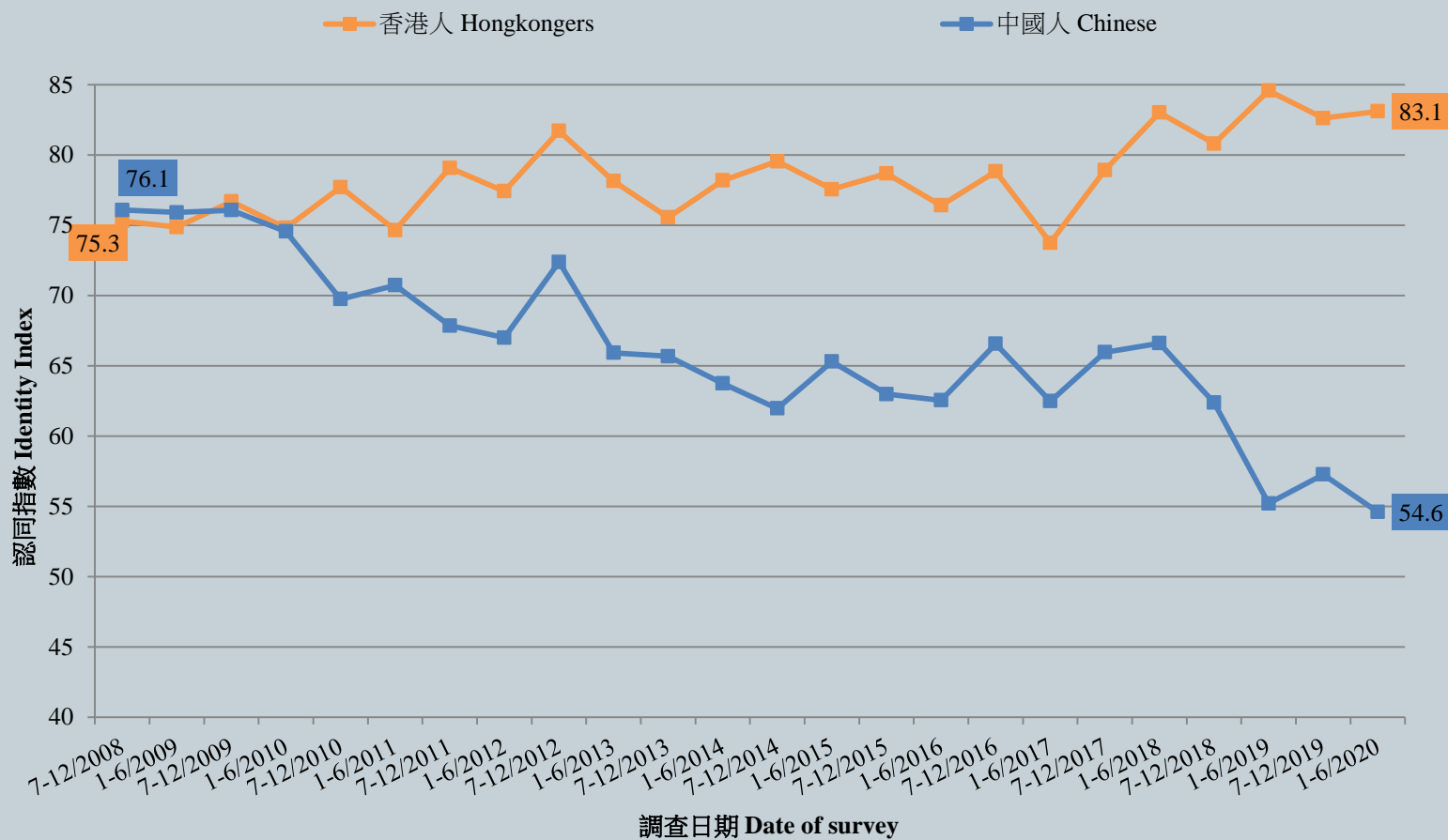
- The identity indexes of “members of the Chinese race” and “Chinese” have registered historical lows since 2008.



# Survey Result - Hong Kong people's ethnic Identity

9

香港市民「身分認同指數」  
Identity Indices of Hong Kong People



# Survey Result - Hong Kong people's ethnic Identity

12

- **Independent ratings**

- Results of independent rating questions that do not involve choosing one among identities show that whether in terms of strength rating, importance rating or identity index, the identity of “Hongkongers” continues to rank first.

# Survey Topic

13

- Hong Kong people's ratings on ethnic identities
  - Independent ratings
  - The dichotomy of “Hongkonger” versus “Chinese” identity
  - In-depth analysis by age groups

# Survey Result - Hong Kong people's ethnic Identity

14

- The dichotomy of “Hongkonger” versus “Chinese” identity

	4-10/12/2019	1-4/6/2020	Change	Record
Identified as “Hongkongers”	55%	<b>50%</b>	<b>▼5%</b>	Record <b>low</b> since Dec. 2018
Identified as “Chinese”	11%	<b>13%</b>	<b>▲2%</b>	Record <b>high</b> since Dec. 2018
Identified as “Chinese Hongkonger”	22%	<b>25%</b>	<b>▲3%</b>	Record <b>high</b> since Jun. 2019
Identified as “Hong Kong Chinese”	10%	<b>11%</b>	<b>▲1%</b>	Record <b>high</b> since Jun. 2018
Identified as “Hongkongers” in broad sense#	78%	<b>75%</b>	<b>▼2%</b>	Record <b>low</b> since Dec. 2018
Identified as “Chinese” in broad sense#	21%	<b>24%</b>	<b>▲3%</b>	Record <b>high</b> since Dec. 2018
Identified with a mixed identity of “Hongkongers” and “Chinese”@	32%	<b>36%</b>	<b>▲4%</b>	Record <b>high</b> since Dec. 2018

- Whether in their narrow and broad senses, the proportions of people identifying themselves as “Hongkongers” outnumber those of “Chinese”. The figures mentioned above also have not registered significant change compared to half a year ago.

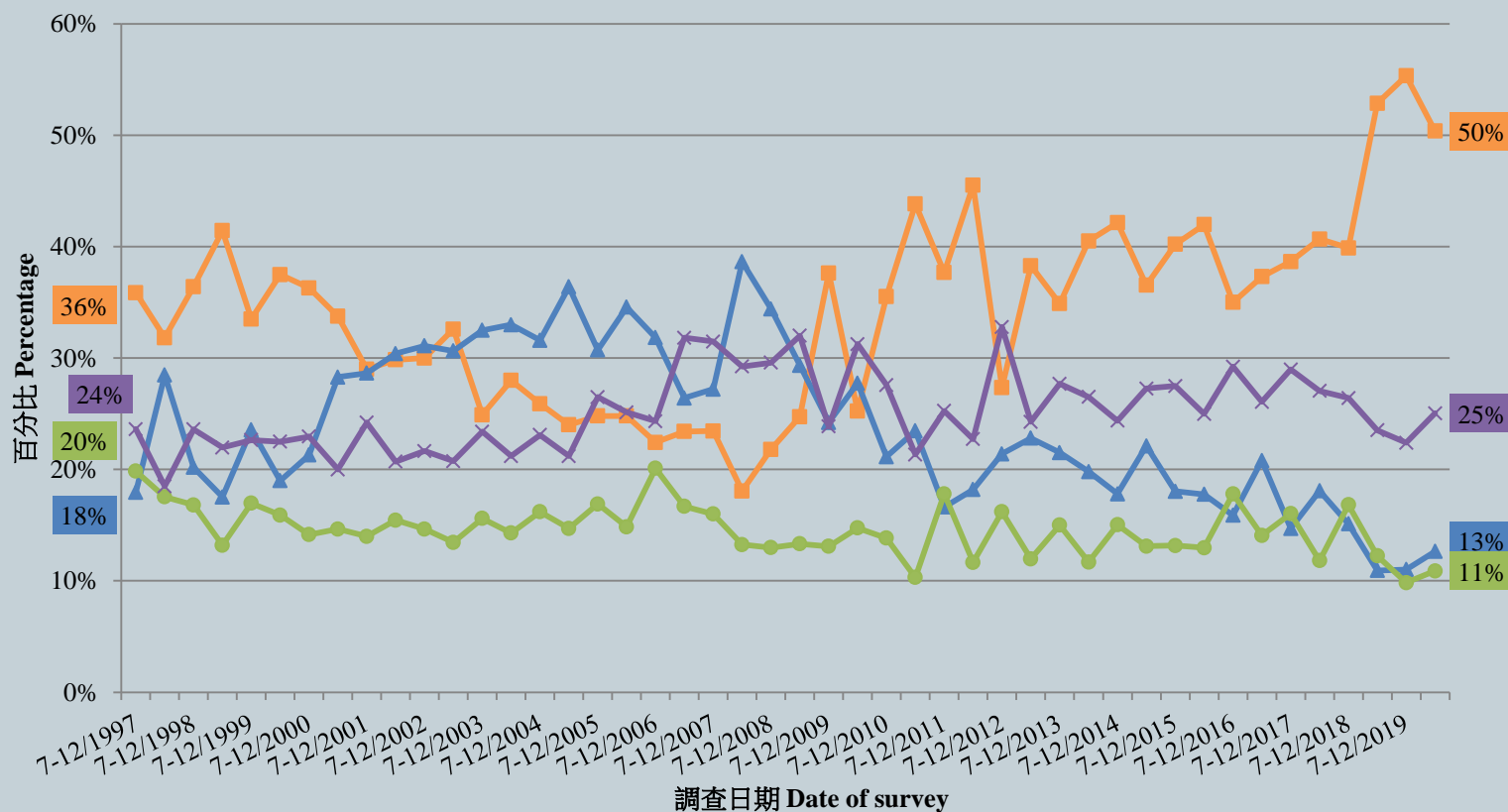
# “Hongkongers” in broad sense, namely answer “Hongkongers” or “Chinese Hongkongers”; “Chinese” in broad sense, namely answer “Chinese” or “Hong Kong Chinese”.  
 @ The mixed identity of “Hongkongers” and “Chinese”, namely answer “Hong Kong Chinese” or “Chinese Hongkongers”.

# Survey Result - Hong Kong people's ethnic Identity

15

## 身分類別認同 (半年結) Ethnic Identity (Half-yearly average) (8/1997 - 6/2020)

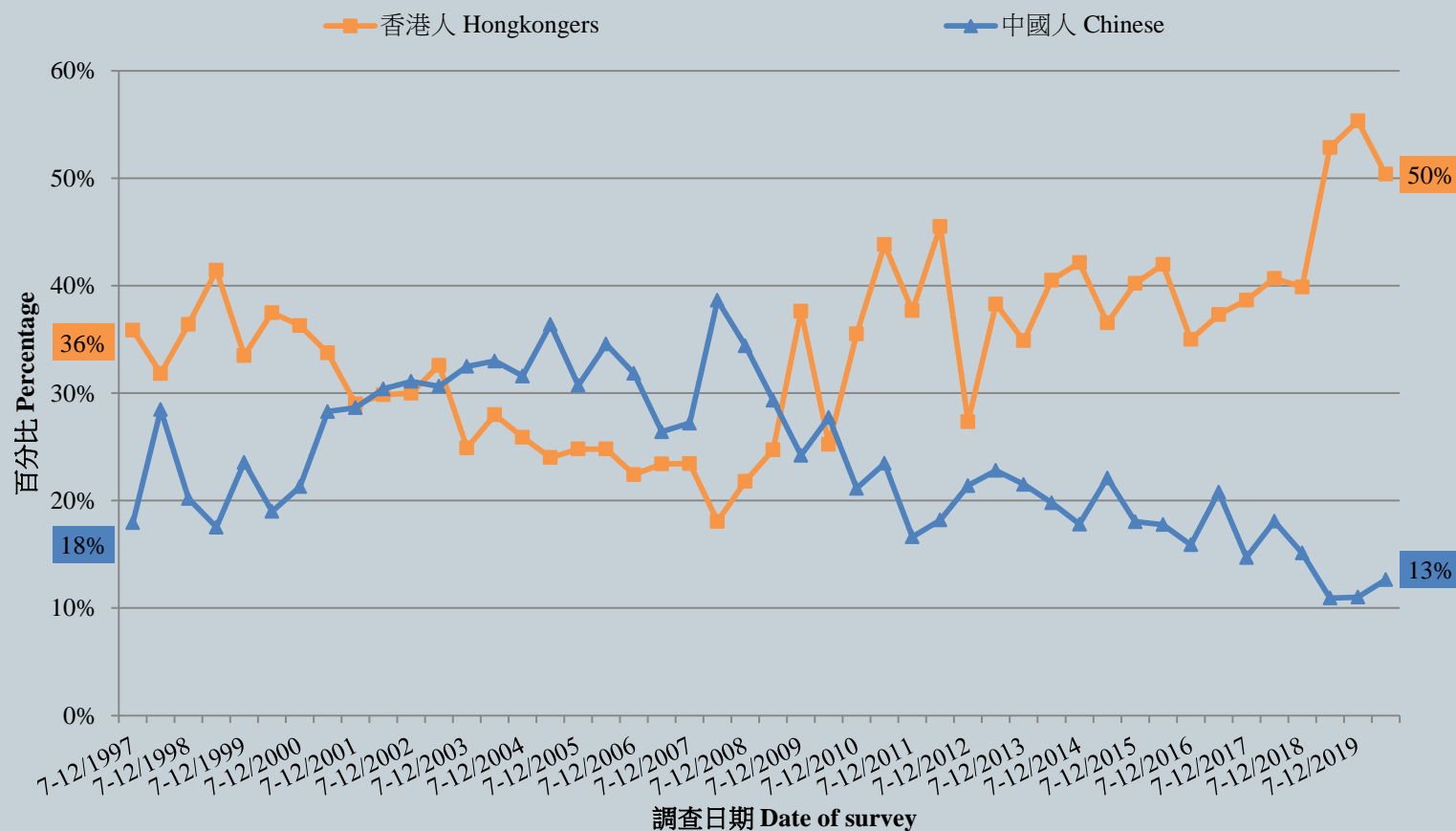
— 香港人 Hongkongers — 中國人 Chinese — 香港的中國人 Chinese in Hong Kong — 中國的香港人 Hongkongers in China



# Survey Result - Hong Kong people's ethnic Identity

16

身分類別認同 (半年結)  
Ethnic Identity (Half-yearly average)  
(8/1997 - 6/2020)



# Survey Topic

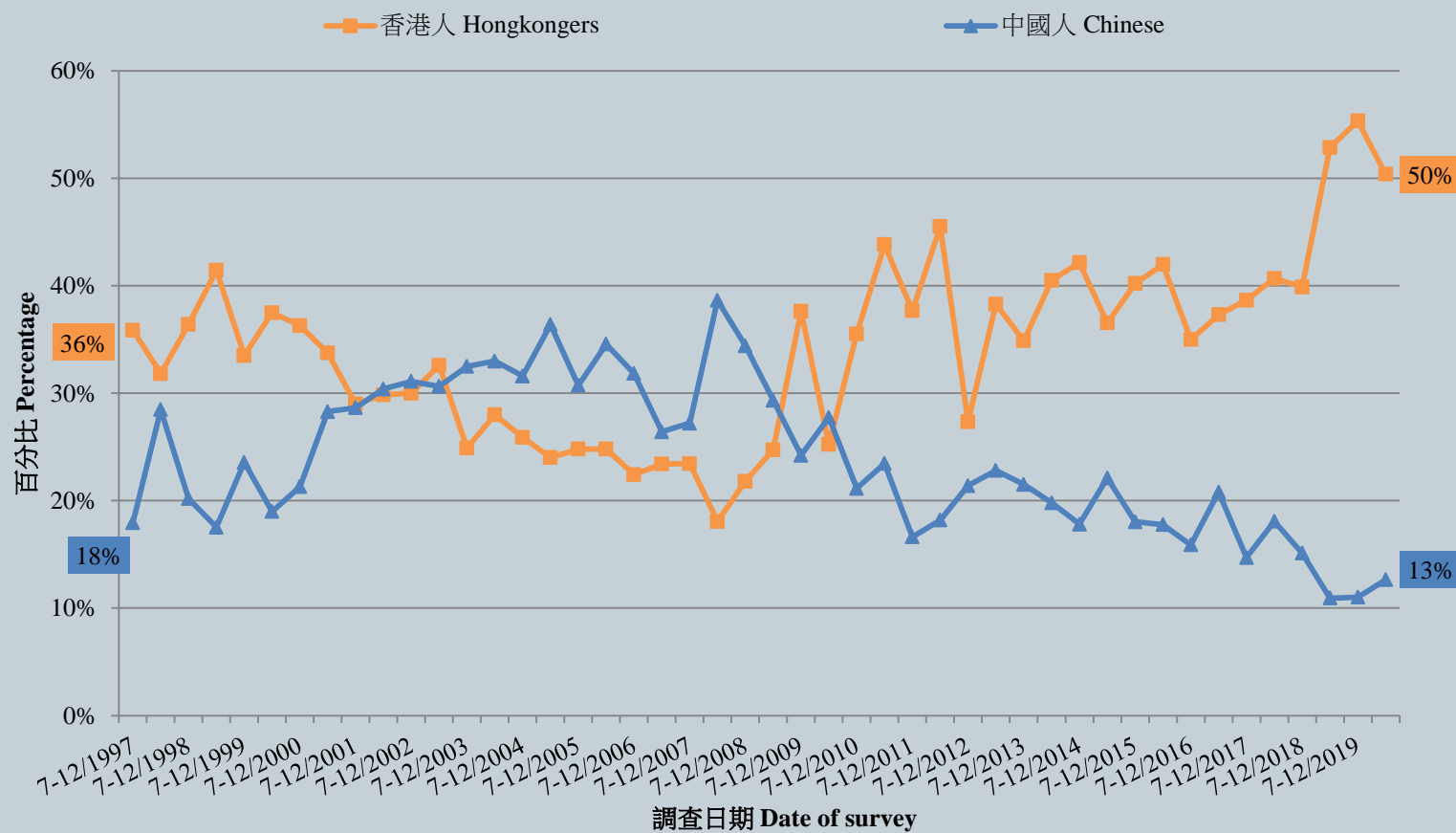
18

- Hong Kong people's ratings on ethnic identities
  - Independent ratings
  - The dichotomy of “Hongkonger” versus “Chinese” identity
  - In-depth analysis by age groups

# Survey Result - Hong Kong people's ethnic Identity

19

身分類別認同 (半年結)  
Ethnic Identity (Half-yearly average)  
(8/1997 - 6/2020)



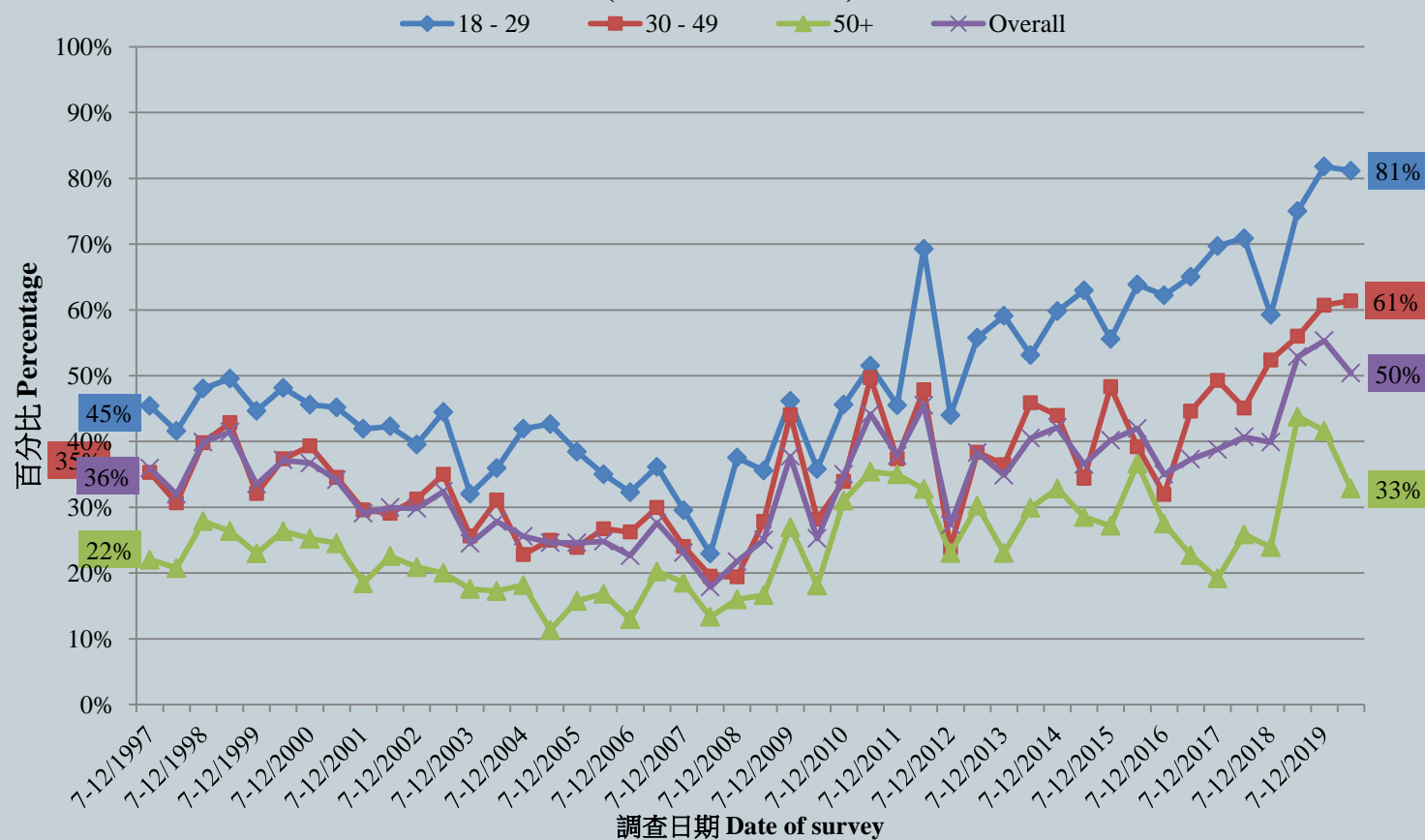


# Survey Result - Hong Kong people's ethnic Identity

20

身分類別認同 - 自稱為「香港人」(半年結及按年齡組別)

Ethnic Identity – Identified as “HongKongers” (Half-yearly average, by age group)  
(8/1997 - 6/2020)

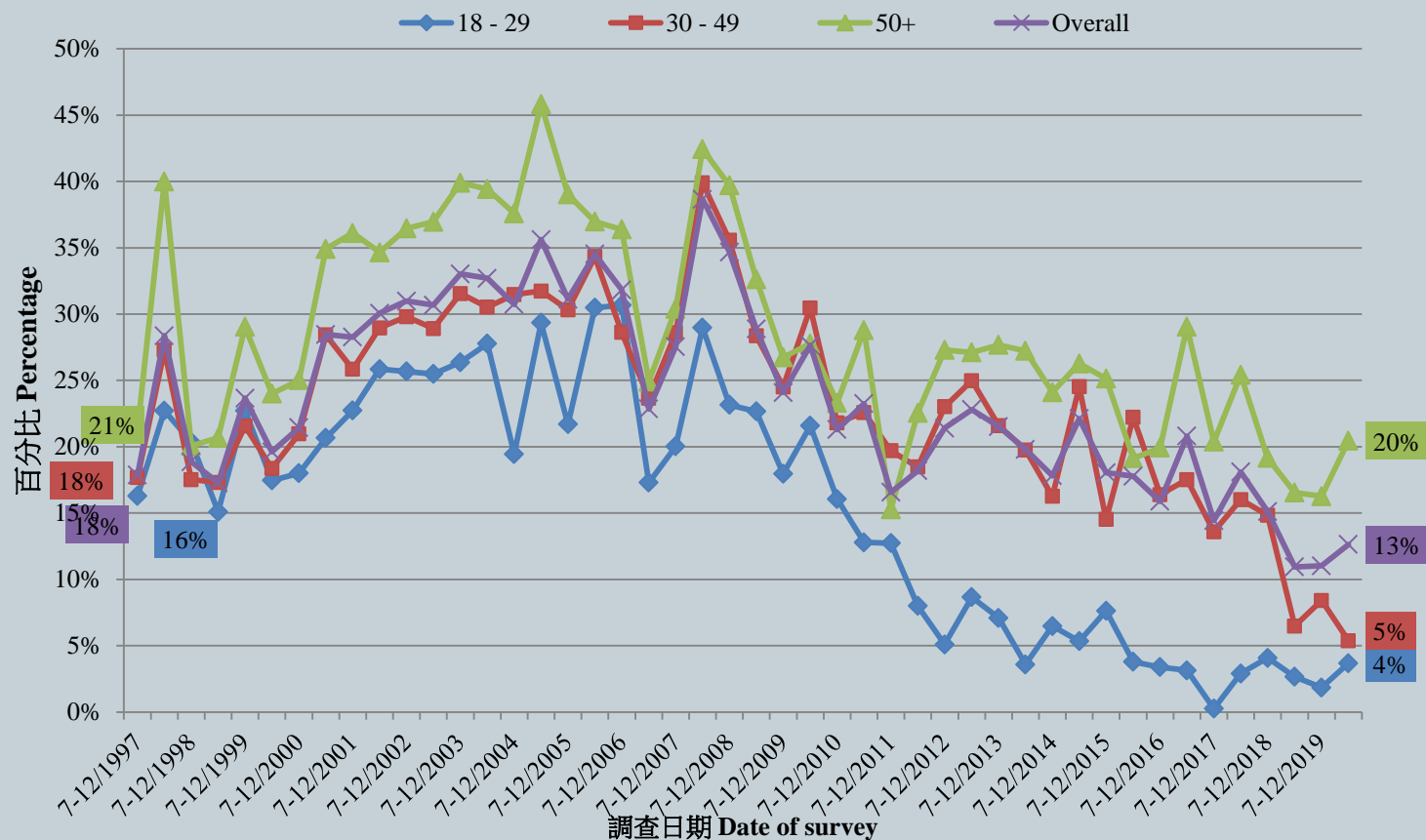


# Survey Result - Hong Kong people's ethnic Identity

21

身分類別認同 - 自稱為「中國人」(半年結及按年齡組別)

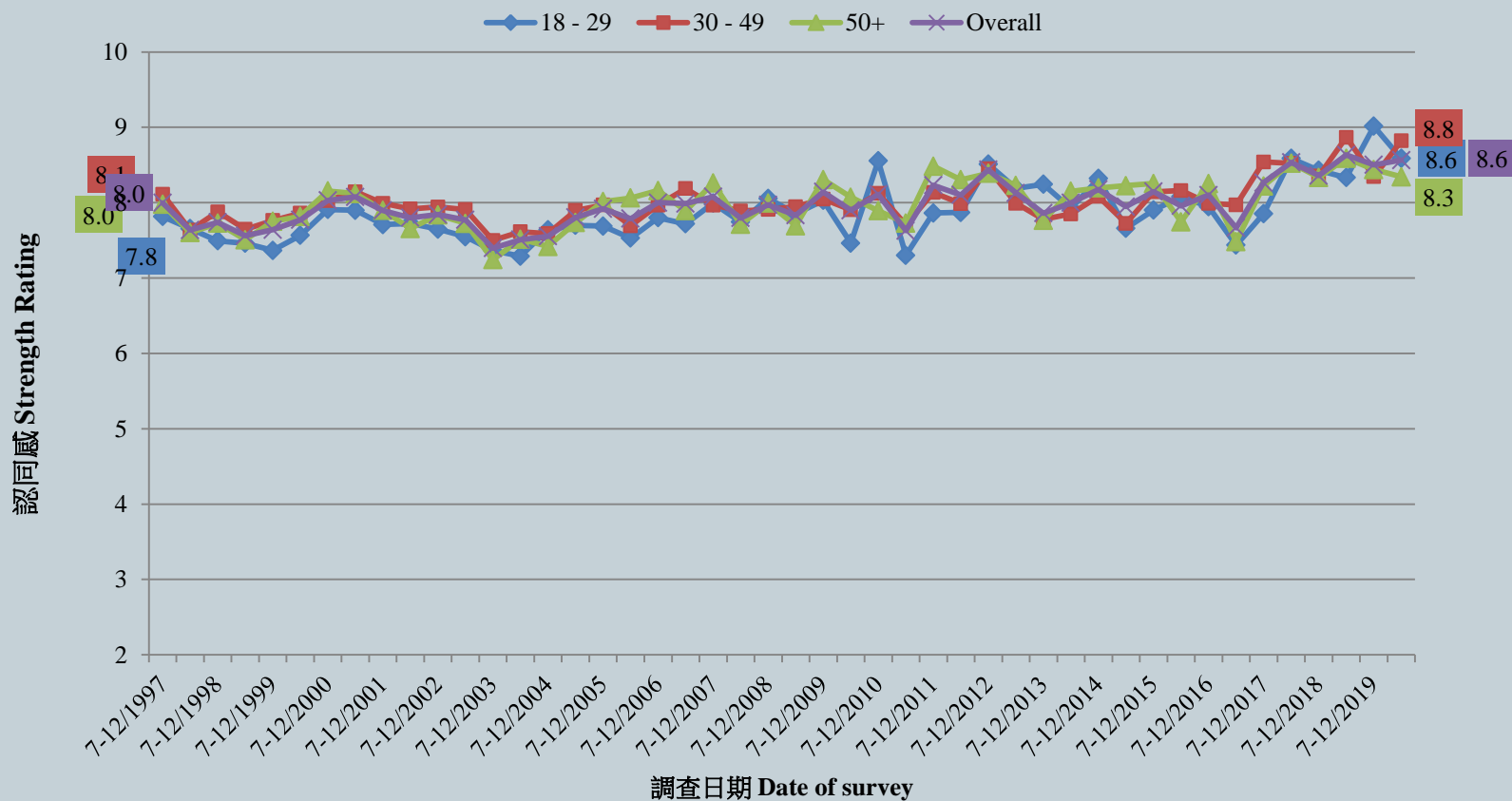
**Ethnic Identity – Identified as “Chinese” (Half-yearly average, by age group)**  
(8/1997 - 6/2020)



# Survey Result - Hong Kong people's ethnic Identity

25

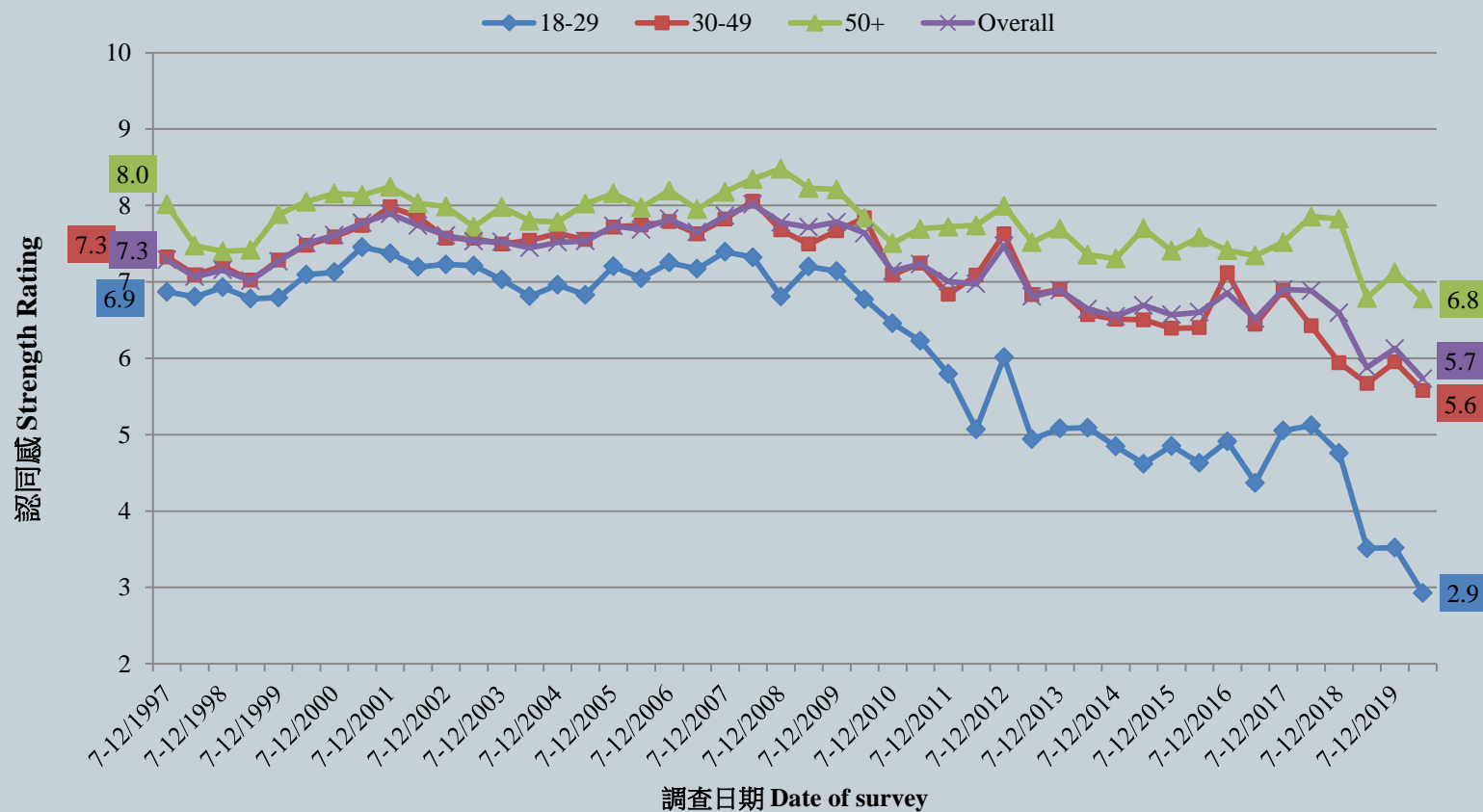
「香港人」身分認同程度評分（半年結及按年齡組別）  
Strength of “Hong Kong citizen” identity (Half-yearly average, by age group)  
(8/1997 - 6/2020)



# Survey Result - Hong Kong people's ethnic Identity

26

「中國人」身分認同程度評分（半年結及按年齡組別）  
Strength of “Chinese” identity (Half-yearly average, by age group)  
(8/1997 - 6/2020)



# POP



---

HONG KONG PUBLIC OPINION PROGRAM

HONG KONG PUBLIC OPINION RESEARCH INSTITUTE

香港民意研究所 之 香港民意研究計劃

---

**Community Integration through Cooperation and Democracy**

**Community Health Module**

**Press Release**

**June 16, 2020**

# Survey Result - Epidemic Normality Resumption Index

Date of Publishing	31/5	1/6	2/6	3/6	4/6	5/6	6/6	7/6	8/6	9/6	10/6	11/6	12/6	13/6	14/6	15/6	16/6
Imported cases(Ytd)	3	0	0	2	0	5	3	3	1	1	0	0	0	0	0	0	3
Local infected case(Ytd)	0	2	3	4	0	1	0	0	0	0	0	0	0	1	1	0	0
Post-Epidemic Gathering Resumption Index (PEGRI)	64.7	27.3	27.0	27.2	56.7	27.2	50.2	50.1	50.0	49.5	55.7	56.4	56.8	27.4	27.6	56.5	50.8

# Survey Result - Epidemic Normality Resumption Index

