

POP



HONG KONG PUBLIC OPINION PROGRAM

HONG KONG PUBLIC OPINION RESEARCH INSTITUTE

香港民意研究所 之 香港民意研究計劃

Consultation on HKPOP Tracking Polls

June 30, 2020

Consultation on HKPOP Tracking Polls

–Subscriber (sample size=195)

3

Item	Topic	Two weeks	One month or shorter	Two months or shorter	Three months or shorter	Half year or shorter	One year or shorter
1	Popularity of Chief Executive	15%	41%	48%	63%	69%	71%
4	Freedom indicator	14%	28%	35%	53%	69%	74%
6	Rule of law indicator	13%	29%	36%	53%	69%	74%
7	Popularity of HKSAR Government	11%	36%	43%	61%	71%	74%
5	Social indicator	9%	26%	33%	51%	67%	74%
11	Trust and Confidence indicator	9%	24%	31%	48%	64%	74%
10	Appraisal of the local news media	8%	19%	27%	42%	59%	73%
2	Popularity of Principal Officials	7%	31%	39%	56%	67%	70%
14	Appraisal of society's current conditions	6%	23%	31%	49%	64%	74%
23	Popularity of the Disciplinary Force and the People's Liberation Army Hong Kong Garrison	4%	15%	19%	32%	45%	65%
12	Ratings of political groups	4%	13%	19%	35%	53%	70%
3	Popularity of Executive Councillors	4%	16%	21%	40%	53%	66%
18	People's ethnic identity	3%	15%	23%	41%	61%	72%
9	Ratings of Legislative Councillors	3%	14%	22%	43%	63%	74%
8	People's most familiar political figures	3%	10%	16%	32%	51%	67%
16	Survey on Policy Address	3%	9%	12%	22%	34%	72%
17	Survey on Financial Budget	3%	9%	12%	22%	35%	72%
24	Corporations' social responsibility	2%	6%	10%	19%	34%	62%
22	Hong Kong people's feelings towards different governments and peoples	2%	6%	9%	20%	34%	62%
15	Popularity of cross-strait political figures	1%	7%	13%	25%	44%	65%
13	Taiwan/Tibet issues	1%	6%	13%	29%	44%	69%
19	HKSAR Anniversary	1%	2%	3%	6%	9%	50%
21	Year-end reviews	1%	2%	2%	5%	7%	71%
20	June Fourth incident	1%	2%	2%	6%	10%	70%

Consultation on HKPOP Tracking Polls

–The public (sample size=768)

5

Item	Topic	Two weeks	One month or shorter	Two months or shorter	Three months or shorter	Half year or shorter	One year or shorter
6	Rule of law indicator	8%	21%	25%	37%	44%	48%
4	Freedom indicator	7%	20%	26%	37%	45%	48%
5	Social indicator	6%	19%	24%	35%	44%	48%
11	Trust and Confidence indicator	6%	18%	22%	32%	42%	47%
10	Appraisal of the local news media	5%	16%	20%	30%	41%	48%
7	Popularity of HKSAR Government	5%	19%	23%	33%	42%	45%
1	Popularity of Chief Executive	5%	21%	26%	34%	42%	43%
14	Appraisal of society's current conditions	4%	15%	20%	30%	41%	48%
2	Popularity of Principal Officials	4%	18%	23%	32%	40%	43%
23	Popularity of the Disciplinary Force and the People's Liberation Army Hong Kong Garrison	4%	12%	16%	23%	31%	41%
9	Ratings of Legislative Councillors	3%	12%	17%	26%	38%	45%
18	People's ethnic identity	3%	12%	17%	25%	36%	45%
3	Popularity of Executive Councillors	3%	13%	17%	27%	35%	40%
12	Ratings of political groups	3%	11%	15%	25%	36%	43%
8	People's most familiar political figures	3%	11%	15%	24%	34%	41%
17	Survey on Financial Budget	2%	8%	10%	18%	28%	45%
16	Survey on Policy Address	2%	7%	10%	19%	29%	45%
22	Hong Kong people's feelings towards different governments and peoples	2%	5%	8%	13%	23%	39%
13	Taiwan/Tibet issues	1%	8%	10%	19%	31%	43%
24	Corporations' social responsibility	1%	6%	8%	16%	26%	41%
20	June Fourth incident	1%	4%	5%	7%	14%	44%
15	Popularity of cross-strait political figures	1%	7%	10%	19%	30%	41%
19	HKSAR Anniversary	1%	2%	3%	6%	9%	24%
21	Year-end reviews	1%	3%	3%	5%	8%	44%

POP



HONG KONG PUBLIC OPINION PROGRAM

HONG KONG PUBLIC OPINION RESEARCH INSTITUTE

香港民意研究所 之 香港民意研究計劃

Latest Tracking Poll Results

Press Release

June 30, 2020

Contact Information

7

- Date of survey: 15-18/6/2020
- Survey method: Random telephone survey conducted by real interviewers
- Target population: Cantonese-speaking Hong Kong residents aged 18+
- Sample size: 1,002 (including 497 landline and 505 mobile samples)
- Effective response: 54.1%
- Sampling error of percentages not more than $\pm 3\%$, that of net values not more than $\pm 5\%$ and that of ratings not more than ± 0.1 at 95% conf. level
- Weighting method: Rim-weighted according to figures provided by the Census and Statistics Department. The gender-age distribution of the Hong Kong population came from “Mid-year population for 2019”, while the educational attainment (highest level attended) distribution and economic activity status distribution came from “Women and Men in Hong Kong - Key Statistics (2019 Edition).

Survey Topic

8

- HK SAR anniversary survey

Survey Result - HKSAR anniversary survey

9

● Chinese national pride

	17-20/6/2019	15-18/6/2020	Change	Record
Proud	27%	34%	▲7% *	Record high since Jun. 2018
Not proud	71%	62%	▼8% *	Record low since Jun. 2018
Net value	-44%	-29%	▲16% *	Record high since Jun. 2018

- The survey shows that Hong Kong people's pride in China's national identity has risen significantly by 7 percentage points to 34% over the same period last year, while the rate of no pride has dropped significantly by 8 percentage points to 62%.

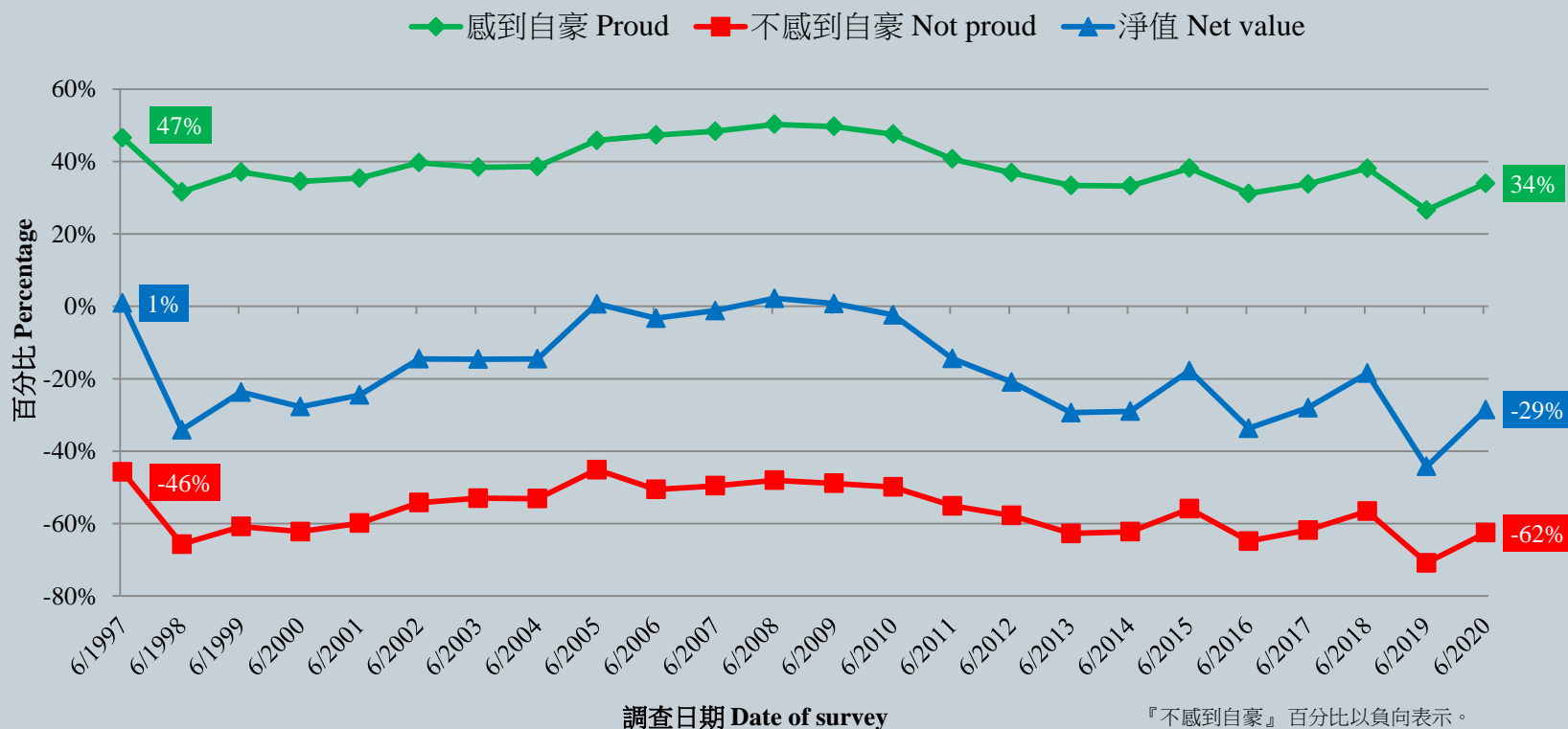
* Significant change

Survey Result - HKSAR anniversary survey

10

你有冇因為九七回歸後正式成為中國國民而感到自豪? (按次計算)

Are you proud of formally becoming a national citizen of China after the 1997 Handover? (Per poll)
(6/1997-6/2020)



『不感到自豪』百分比以負向表示。
Percentage of 'Not proud' is presented as negative

Survey Result - HKSAR anniversary survey

11

● Central Government's policies on Hong Kong

	17-20/6/2019	15-18/6/2020	Change	Record
Positive appraisal	23%	28%	▲5% *	Record high since Jun. 2018
Negative appraisal	53%	50%	▼3%	Record low since Jun. 2019
Net appraisal	-30%	-21%	▲8% *	Record high since Jun. 2018
Mean value	2.5	2.6	▲0.1	Record high since Jun. 2018

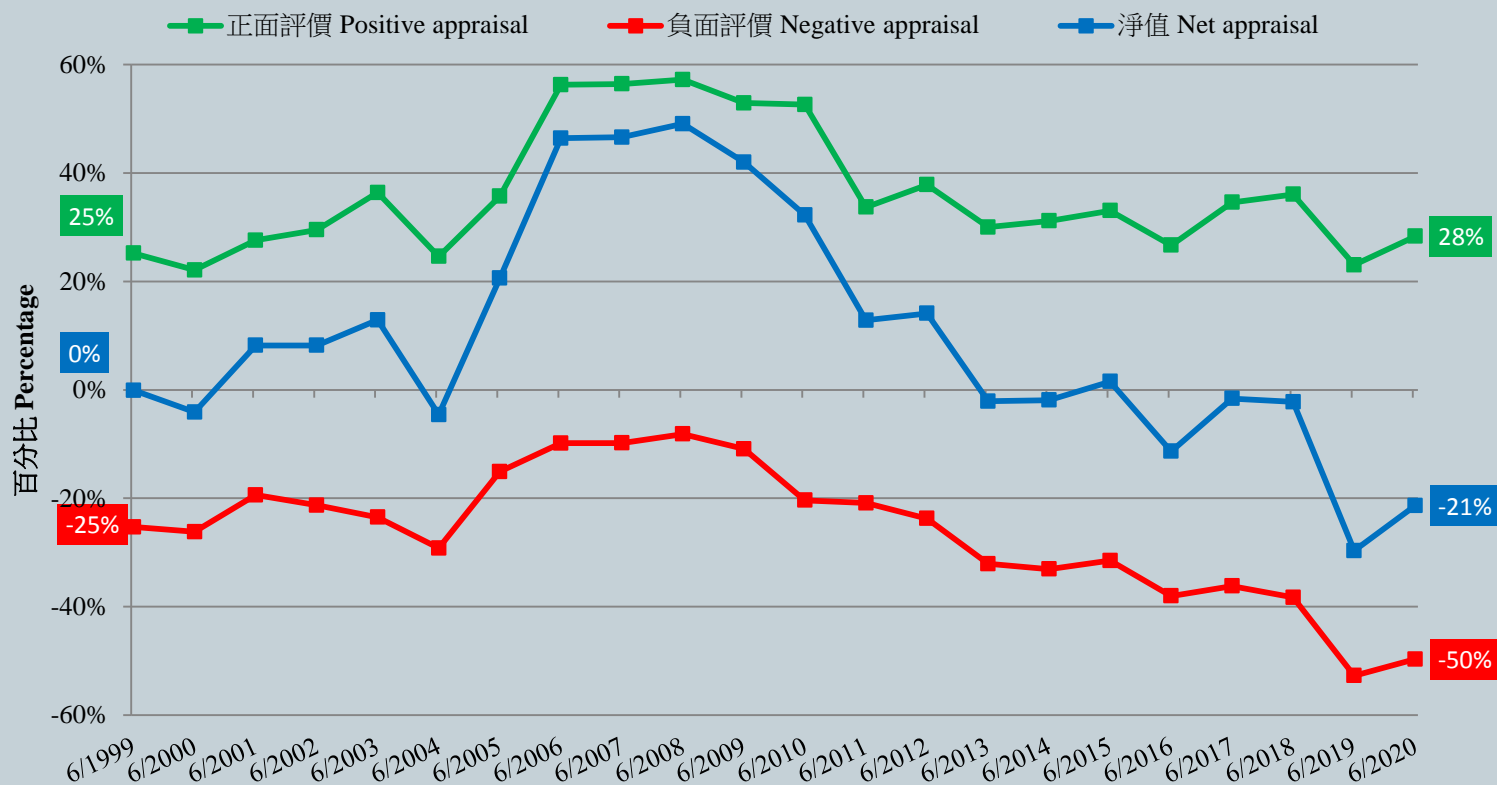
- As for the policies of the Central Government on Hong Kong after the handover, 28% of the respondents gave positive feedback, whereas 50% gave negative appraisal, giving a net appraisal of negative 21 percentage points. The mean score is 2.6 marks, meaning between “half-half” and “not quite good” in general. Positive figures increase significantly from the same period last year.

* Significant change

Survey Result - HKSAR anniversary survey

12

中央政府對港政策 (按次計算)
Central Government's policies on Hong Kong (Per Poll)
(6/1999 – 6/2020)



調查日期 Date of Survey

『負面評價』百分比以負向表示。
Percentage of 'Negative appraisal' is presented as negative

POP



HONG KONG PUBLIC OPINION PROGRAM

HONG KONG PUBLIC OPINION RESEARCH INSTITUTE

香港民意研究所 之 香港民意研究計劃

Community Integration through Cooperation and Democracy

Community Health Module

Press Release

June 30, 2020

Survey Result - Epidemic Normality Resumption Index

Date of Publishing	14/6	15/6	16/6	17/6	18/6	19/6	20/6	21/6	22/6	23/6	24/6	25/6	26/6	27/6	28/6	29/6	30/6
Imported cases(Ytd)	0	0	3	0	8	4	3	1	3	30	16	2	14	3	1	2	4
Local infected case(Ytd)	1	0	0	0	0	0	0	0	0	0	0	0	0	0	0	0	0
Post-Epidemic Gathering Resumption Index (PEGRI)	27.6	56.5	50.8	56.4	53.0	54.6	54.1	54.4	54.5	48.0	49.2	54.7	50.9	56.1	66.8	66.8	66.9

Survey Result - Epidemic Normality Resumption Index

