

POP



HONG KONG PUBLIC OPINION PROGRAM

HONG KONG PUBLIC OPINION RESEARCH INSTITUTE

香港民意研究所 之 香港民意研究計劃

Latest Tracking Poll Results

Press Release

July 21, 2020

Contact Information

2

- Date of survey: 6-9/7/2020
- Survey method: Random telephone survey conducted by real interviewers
- Target population: Cantonese-speaking Hong Kong residents aged 18+
- Sample size: 1,001 (including 492 landline and 509 mobile samples)
- Effective response: 52.4%
- Sampling error: Sampling error of ratings not more than ± 2.7 at 95% conf. level
- Weighting method: Rim-weighted according to figures provided by the Census and Statistics Department. The gender-age distribution of the Hong Kong population came from “Mid-year population for 2019”, while the educational attainment (highest level attended) distribution and economic activity status distribution came from “Women and Men in Hong Kong - Key Statistics (2019 Edition)”.

Survey Topic

3

• Social indicators

- **Core indicators**
- Degree of freedom
- Degree of prosperity
- Degree of democracy
- Compliance with the rule of law
- Degree of stability
- **Non-core indicators**
- Degree of civilization
- Degree of social welfare sufficiency
- Degree of efficiency
- Degree of public order
- Degree of corruption-free practices
- Degree of equality
- Degree of fairness

• Freedom indicators

- Freedom of religious belief
- Freedom to enter or leave Hong Kong
- Freedom to engage in artistic and literary creation
- Freedom to engage in academic research
- Freedom of speech
- Freedom of publication
- Freedom of press
- Freedom of association
- Freedom to strike
- Freedom of procession and demonstration

• Rule of law indicators

- Impartiality of the courts
- Fairness of the judicial system
- Support rating of Geoffrey Ma

Survey Result – Social indicators

4

- **Five core social indicators**

	14-17/4/2020	6-9/7/2020	Change	Record
Degree of prosperity	5.4	5.4	▼0.1	Record low since Jul. 2003
Degree of freedom	5.6	4.8	▼0.7 *	All-time record low since Jun. 1997
Degree of democracy	4.6	4.4	▼0.2	All-time record low since Jun. 1997
Compliance with the rule of law	4.5	4.1	▼0.3	All-time record low since Jun. 1997
Degree of stability	4.4	4.1	▼0.3 *	Record low since Sept. 2019

- The latest survey shows that various social and freedom indicators continue to stay low. Compared with the survey in mid-April, ratings of “freedom” and “stability” have dropped significantly. Ratings of “freedom”, “democracy” and “rule of law” have registered all-time lows since records began in 1997 while the rating of “prosperity” has registered a record low since July 2003.

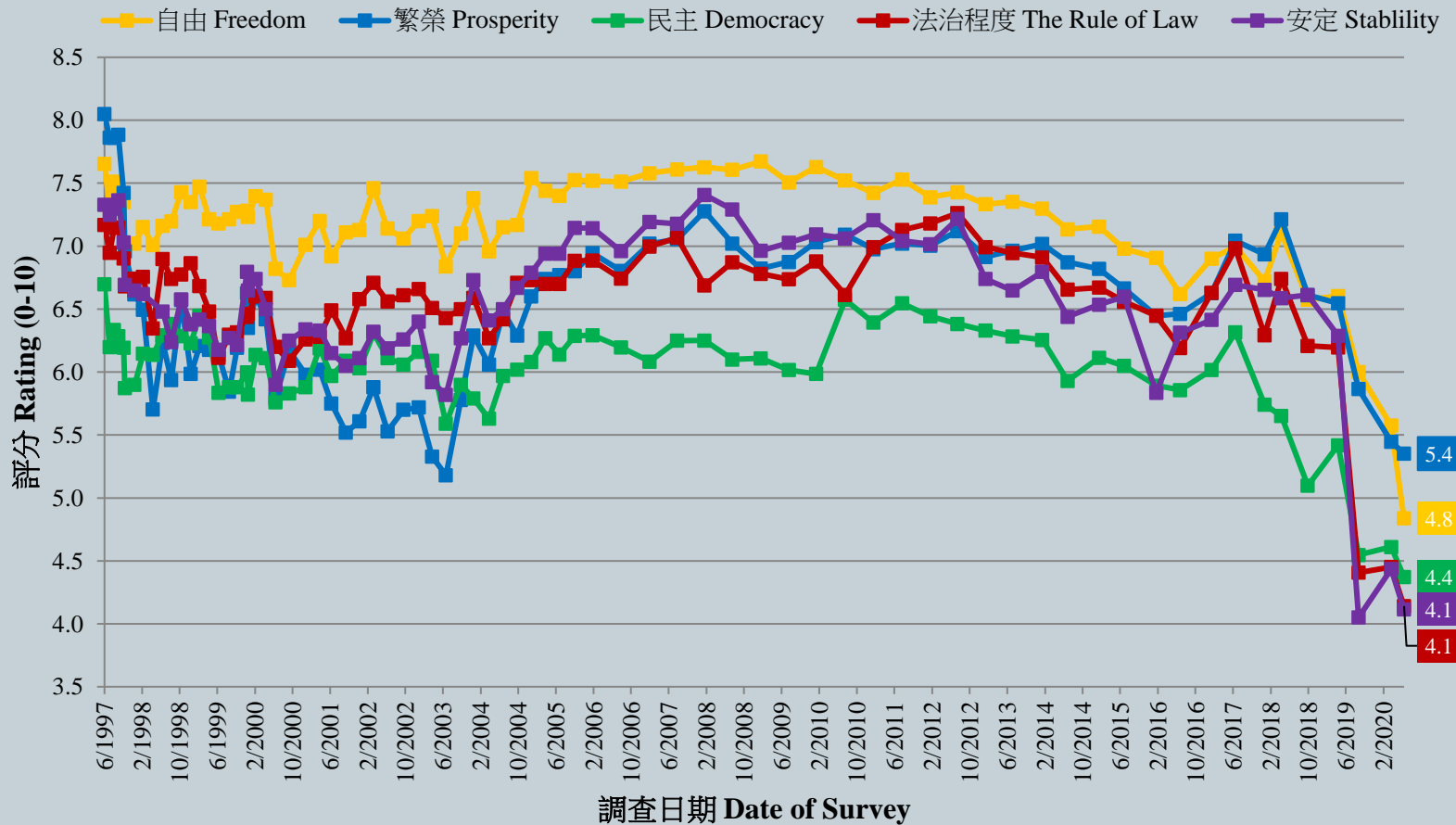
* Significant change

Survey Result – Social indicators

5

核心社會指標走勢圖表 (按次計算)

Trend of Core Social Indicators Chart (Per Poll)



Survey Result – Social indicators

6

- **Seven non-core social indicators**

	14-17/4/2020	6-9/7/2020	Change	Record
Degree of social welfare sufficiency	5.6	5.6	▲0.1	Record high since May 2019
Degree of civilization	6.0	5.4	▼0.6 *	All-time record low since Jun. 1997
Degree of efficiency	5.3	5.3	▲0.1	Record high since Sept. 2019
Degree of public order	5.1	5.1	▲<0.1	Record high since May 2019
Degree of Corruption-free practices	5.0	5.0	▲<0.1	Record high since Sept. 2019
Degree of equality	4.9	4.6	▼0.2	All-time record low since Jun. 1997
Degree of fairness	4.8	4.2	▼0.6 *	All-time record low since Jun. 1997

- Compared with the previous survey, ratings of “civilization” and “fairness” have dropped significantly. Ratings of “civilization”, “equality” and “fairness” have all registered all-time lows since records began in 1997.

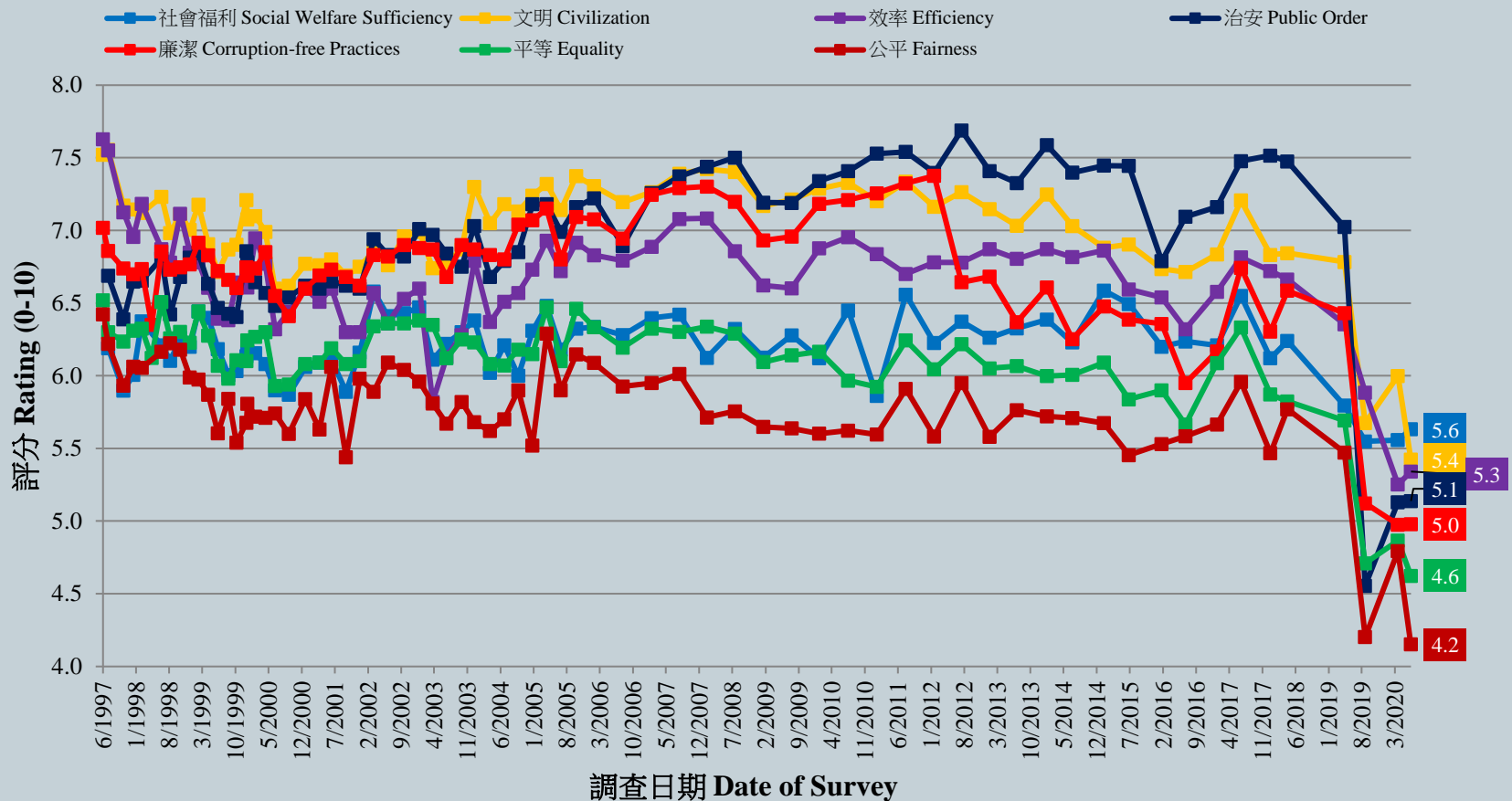
* Significant change

Survey Result – Social indicators

7

非核心社會指標走勢圖表 (按次計算)

Trend of Non-Core Social Indicators Chart (Per Poll)



Survey Topic

8

• Social indicators

- **Core indicators**
- Degree of freedom
- Degree of prosperity
- Degree of democracy
- Compliance with the rule of law
- Degree of stability
- **Non-core indicators**
- Degree of civilization
- Degree of social welfare sufficiency
- Degree of efficiency
- Degree of public order
- Degree of corruption-free practices
- Degree of equality
- Degree of fairness

• Freedom indicators

- Freedom of religious belief
- Freedom to enter or leave Hong Kong
- Freedom to engage in artistic and literary creation
- Freedom to engage in academic research
- Freedom of speech
- Freedom of publication
- Freedom of press
- Freedom of association
- Freedom to strike
- Freedom of procession and demonstration

• Rule of law indicators

- Impartiality of the courts
- Fairness of the judicial system
- Support rating of Geoffrey Ma

Survey Result – Freedom indicators

9

- **Ten freedom sub-indicators**

	14-17/4/2020	6-9/7/2020	Change	Record
Degree of freedom (repeated listing)	5.6	4.8	▼0.7 *	All-time record low since Jun. 1997
Freedom of religious belief	7.2	6.7	▼0.5 *	All-time record low since Jun. 1997
Freedom to enter or leave Hong Kong	7.0	6.5	▼0.5 *	All-time record low since Jun. 1997
Freedom to engage in academic research	5.6	5.0	▼0.6 *	All-time record low since Jun. 1997
Freedom to engage in artistic and literary creation	5.6	5.0	▼0.7 *	All-time record low since Jun. 1997
Freedom of publication	5.1	4.4	▼0.7 *	All-time record low since Jun. 1997
Freedom of speech	5.2	4.4	▼0.8 *	All-time record low since Jun. 1997
Freedom of association	4.9	4.3	▼0.5 *	All-time record low since Jun. 1997
Freedom of press	4.9	4.3	▼0.7 *	All-time record low since Jun. 1997
Freedom to strike	4.7	4.1	▼0.6 *	All-time record low since Jun. 1997
Freedom of procession and demonstration	4.1	3.3	▼0.8 *	All-time record low since Jun. 1997

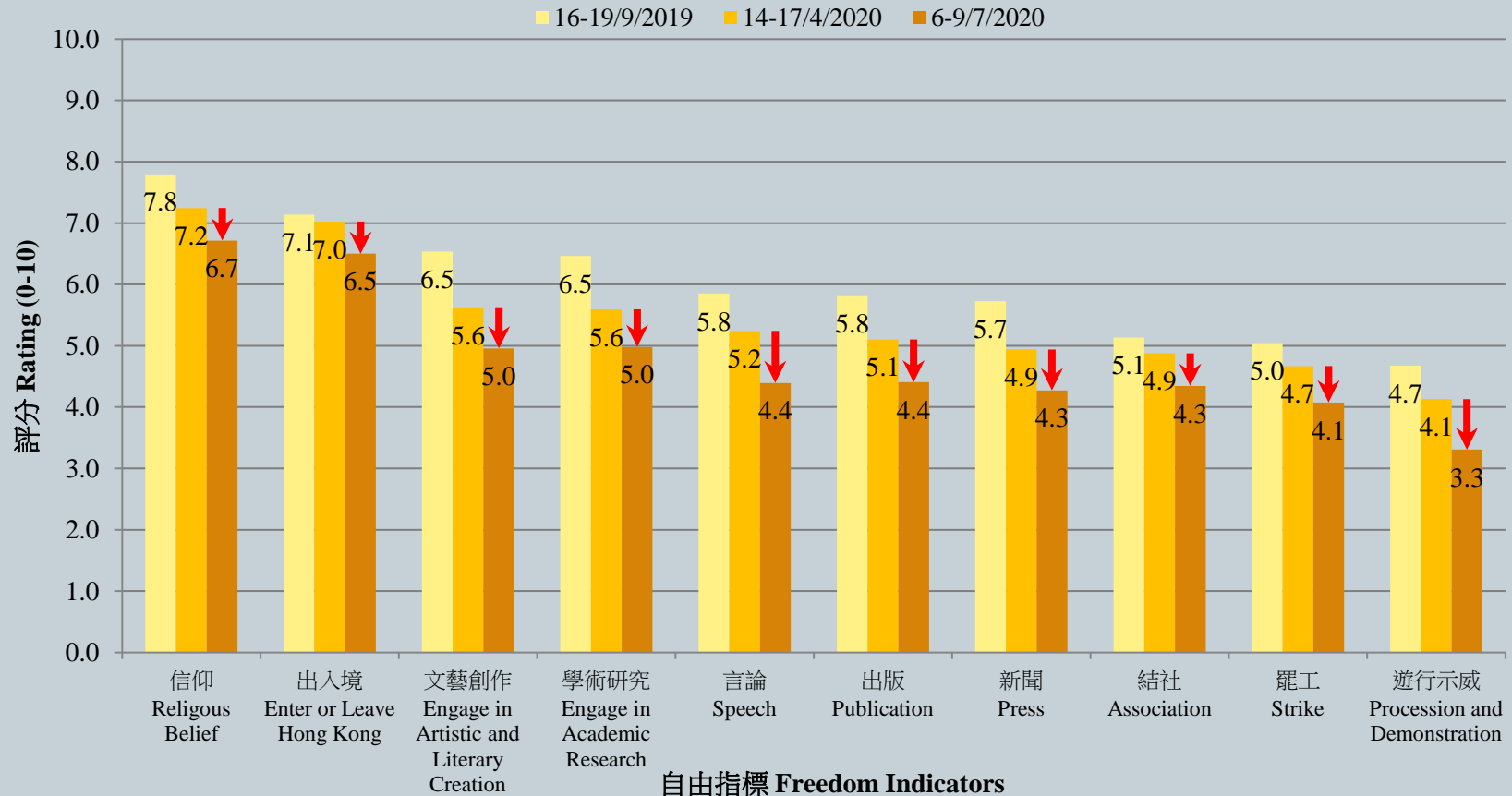
- All ten sub-indicators have dropped significantly and have registered all-time lows since records began in 1997.

* Significant change

Survey Result – Freedom indicators

10

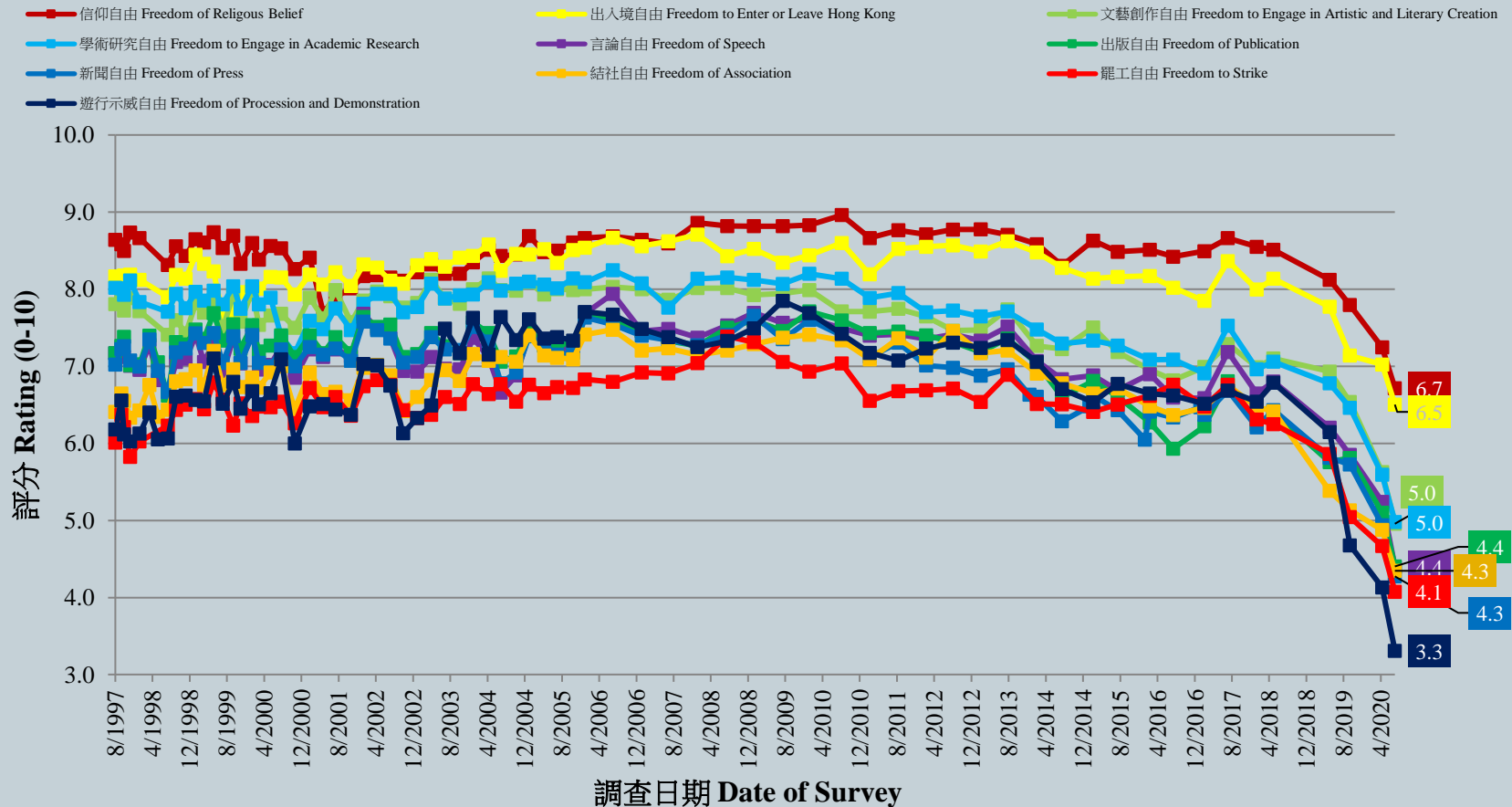
自由指標綜合圖表
Freedom Indicators Combined Charts



Survey Result – Freedom indicators

11

自由指標走勢圖表 (按次計算)
Trend of Freedom Indicators Chart (Per Poll)



Survey Topic

12

• Social Indicators

- **Core indicators**
- Degree of freedom
- Degree of prosperity
- Degree of democracy
- Compliance with the rule of law
- Degree of stability
- **Non-core indicators**
- Degree of civilization
- Degree of social welfare sufficiency
- Degree of efficiency
- Degree of public order
- Degree of corruption-free practices
- Degree of equality
- Degree of fairness

• Freedom Indicators

- Freedom of religious belief
- Freedom to enter or leave Hong Kong
- Freedom to engage in artistic and literary creation
- Freedom to engage in academic research
- Freedom of speech
- Freedom of publication
- Freedom of press
- Freedom of association
- Freedom to strike
- Freedom of procession and demonstration

• Rule of law Indicators

- Impartiality of the courts
- Fairness of the judicial system
- Support rating of Geoffrey Ma

Survey Result – Rule of law indicators

13

- **Two rule of law sub-indicators and the rating of the Chief Justice**

	14-17/4/2020	6-9/7/2020	Change	Record
Compliance with the rule of law (repeated listing)	4.5	4.1	▼0.3	All-time record low since Jul. 1997
Impartiality of the courts	4.6	4.2	▼0.4 *	All-time record low since Jul. 1997
Fairness of the judicial system	4.4	4.1	▼0.3 *	All-time record low since Jul. 1997
Support rating of Geoffrey Ma	57.3	57.1	▼0.1	Record low since Sept. 2019

- As for the two rule of law sub-indicators, “impartiality of the courts” got 4.2 marks, while “fairness of the judicial system” got 4.1 marks. **Both indicators have dropped significantly and registered all-time lows since records began in 1997.** As for Chief Justice Geoffrey Ma, his latest support rating is 57.1 on a scale of 0 to 100, which is comparable to the previous survey.

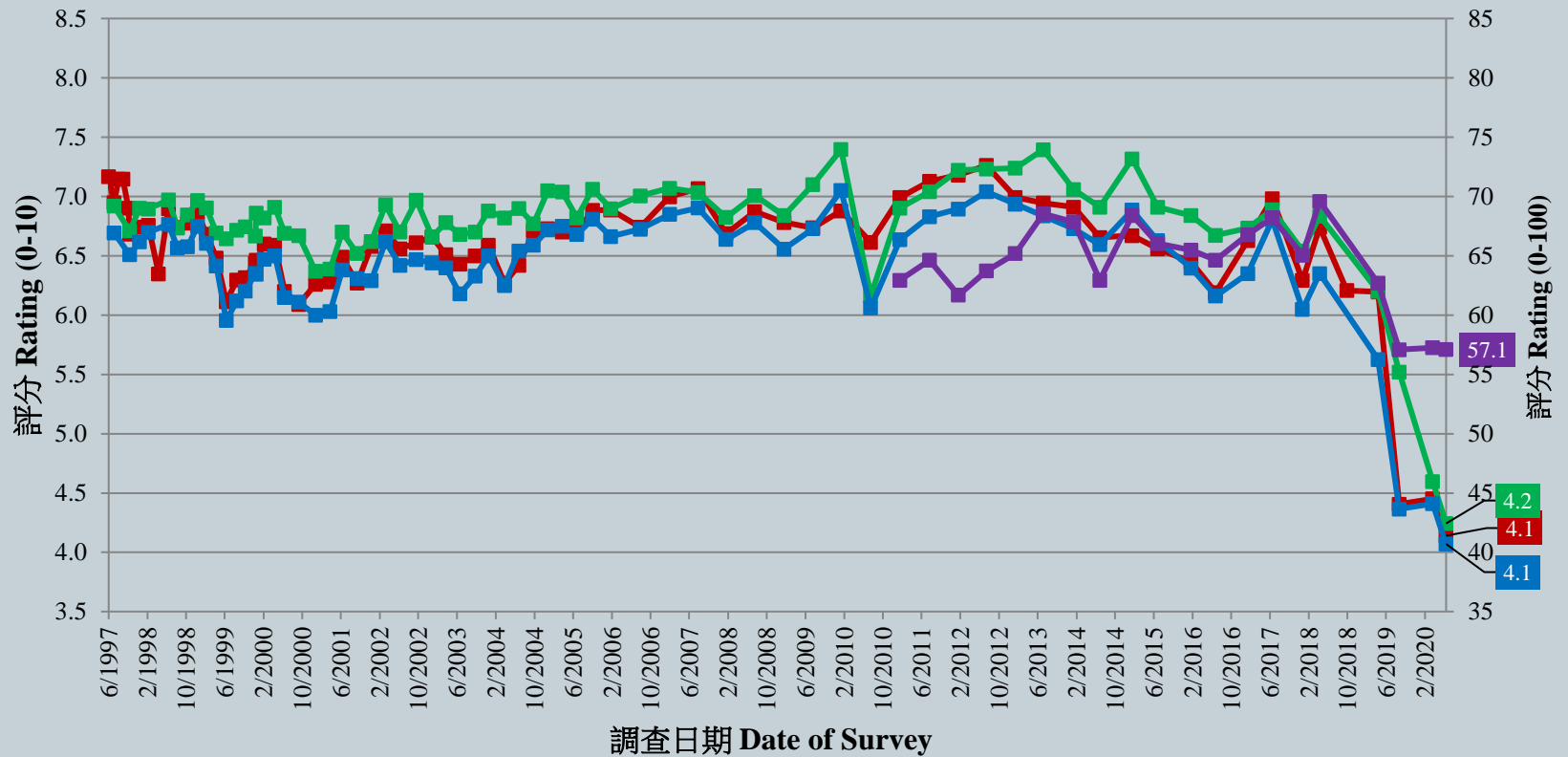
* Significant change

Survey Result – Rule of law indicators

法治指標走勢圖表 (按次計算)

Trend of Rule of Law Indicators Chart (Per Poll)

- 法治程度 The Rule of Law
- 法庭公正程度 Impartiality of the Courts
- 司法制度公平程度 Fairness of the Judicial System
- 馬道立支持度 Support rating of Geoffrey Ma



POP



HONG KONG PUBLIC OPINION PROGRAM

HONG KONG PUBLIC OPINION RESEARCH INSTITUTE

香港民意研究所 之 香港民意研究計劃

Community Democracy Project -

Community Health Module

Press Release

July 21, 2020

Survey Result - Epidemic Normality Resumption Index

17

Date of Publishing	5/7	6/7	7/7	8/7	9/7	10/7	11/7	12/7	13/7	14/7	15/7	16/7	17/7	18/7	19/7	20/7	21/7
Imported cases(Ytd)	11	8	16	5	5	8	6	12	8	11	8	5	4	8	4	25	7
Local infected cases(Ytd)	0	2	1	9	19	34	32	16	30	41	40	14	63	50	60	83	66
Post-Epidemic Gathering Resumption Index (PEGRI)	59.2	27.2	27.3	26.4	25.6	26.6	26.6	26.4	26.2	25.2	12.0	11.5	11.5	10.5	10.4	10.2	10.1

Survey Result - Epidemic Normality Resumption Index

