

POP



HONG KONG PUBLIC OPINION PROGRAM

HONG KONG PUBLIC OPINION RESEARCH INSTITUTE

香港民意研究所 之 香港民意研究計劃

Latest Tracking Poll Results

Press Release

August 4, 2020

Contact Information

2

| | Naming stage | Rating stage |
|-------------------------|--|---|
| Date of survey | 20-21/7/2020 | 22-24/7/2020 |
| Survey method | Random telephone survey conducted by real interviewers | |
| Target population | Cantonese-speaking Hong Kong residents aged 18 or above | |
| Sample size | 514 (including 258 landline and 256 mobile samples) | 510 (including 267 landline and 243 mobile samples) |
| Effective response rate | 66.8% | 56.5% |
| Sampling error | Sampling error of ratings not more than +/-3.5 at 95% conf. level | |
| Weighting method | Rim-weighted according to figures provided by the Census and Statistics Department. The gender-age distribution of the Hong Kong population came from “Mid-year population for 2019”, while the educational attainment (highest level attended) distribution and economic activity status distribution came from “Women and Men in Hong Kong - Key Statistics (2019 Edition)”. | |

Survey Topic

3

- Popularity of Cross-strait political figures
 - Top Ten Political Figures in Mainland China and Taiwan - Naming
 - Top Ten Political Figures in Mainland China and Taiwan - Rating

Survey Result - Popularity of Cross-strait political figures

4

- Top Ten Political Figures in Mainland China and Taiwan - Naming

| Rank | Political figures | Region | 9-10/1/2020 | 20-21/7/2020 | Change | Change in ranking |
|------|-------------------|--------|-------------|--------------|--------|-------------------|
| 1 | Xi Jinping | China | 88% | 79% | ▼9% * | -- |
| 2 | Tsai Ing-wen | Taiwan | 82% | 73% | ▼9% * | -- |
| 3 | Li Keqiang | China | 26% | 34% | ▲8% * | ▲3 |
| 4 | Ma Ying-jeou | Taiwan | 44% | 27% | ▼17% * | ▼1 |
| 5 | Hu Jintao | China | 22% | 18% | ▼4% | ▲3 |
| 6 | Jiang Zemin | China | 31% | 17% | ▼14% * | ▼1 |
| 7 | Chen Shui-bian | Taiwan | 24% | 15% | ▼10% * | -- |
| 8 | Wen Jiabao | China | 18% | 13% | ▼5% * | ▲1 |
| 9 | Han Kuo-yu | Taiwan | 34% | 9% | ▼25% * | ▼5 |
| 10 | Zhu Rongji | China | 13% | 7% | ▼6% * | ▲1 |
| 11 | Han Zheng | China | 6% | 7% | ▲1% | ▲2 |
| 12 | Lee Teng-hui | Taiwan | 9% | 5% | ▼4% * | -- |

* Significant change

Survey Result - Popularity of Cross-strait political figures

5

• Top Ten Political Figures in Mainland China and Taiwan - Rating

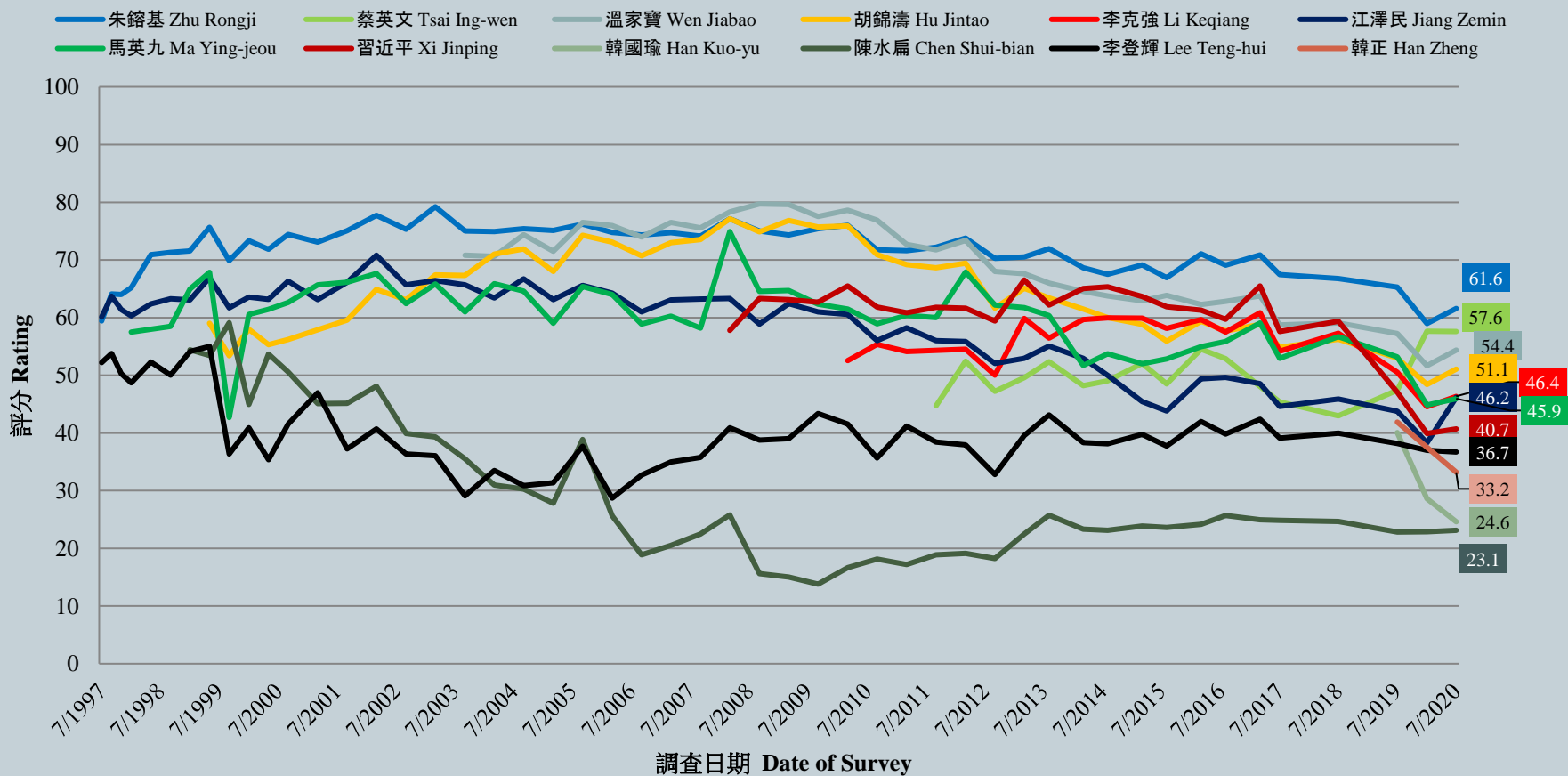
| Political figures | Region | 14-15/1/2020 | 22-24/7/2020 | Change | Record |
|-------------------|--------|--------------|--------------|-----------------|--|
| Zhu Rongji | China | 59.0 | 61.6 | ▲2.6 | Record high since Jul. 2019 |
| Tsai Ing-wen | Taiwan | 57.6 | 57.6 | ▼<0.1 | Record low since Jul. 2019 |
| Wen Jiabao | China | 51.7 | 54.4 | ▲2.7 | Record high since Jul. 2019 |
| Hu Jintao | China | 48.4 | 51.1 | ▲2.7 | Record high since Jul. 2019 |
| Li Keqiang | China | 44.6 | 46.4 | ▲1.8 | Record high since Jul. 2019 |
| Jiang Zemin | China | 38.3 | 46.2 | ▲7.9 * | Record high since Mar. 2017 |
| Ma Ying-jeou | Taiwan | 44.8 | 45.9 | ▲1.1 | Record high since Jul. 2019 |
| Xi Jinping | China | 39.9 | 40.7 | ▲0.8 | Record high since Jul. 2019 |
| Han Kuo-yu | Taiwan | 28.6 | 24.6 | ▼4.0 * | All-time record low since Jul. 2019 |
| Chen Shui-bian | Taiwan | 22.9 | 23.1 | ▲0.3 | Record high since Jul. 2018 |
| Lee Teng-hui | Taiwan | 37.0 | 36.7 | ▼0.3 | Record low since Sept. 2012 |
| Han Zheng | China | -- | 33.2 | -- | All-time record low since Jul. 2019 |

* Significant change

Survey Result - Popularity of Cross-strait political figures

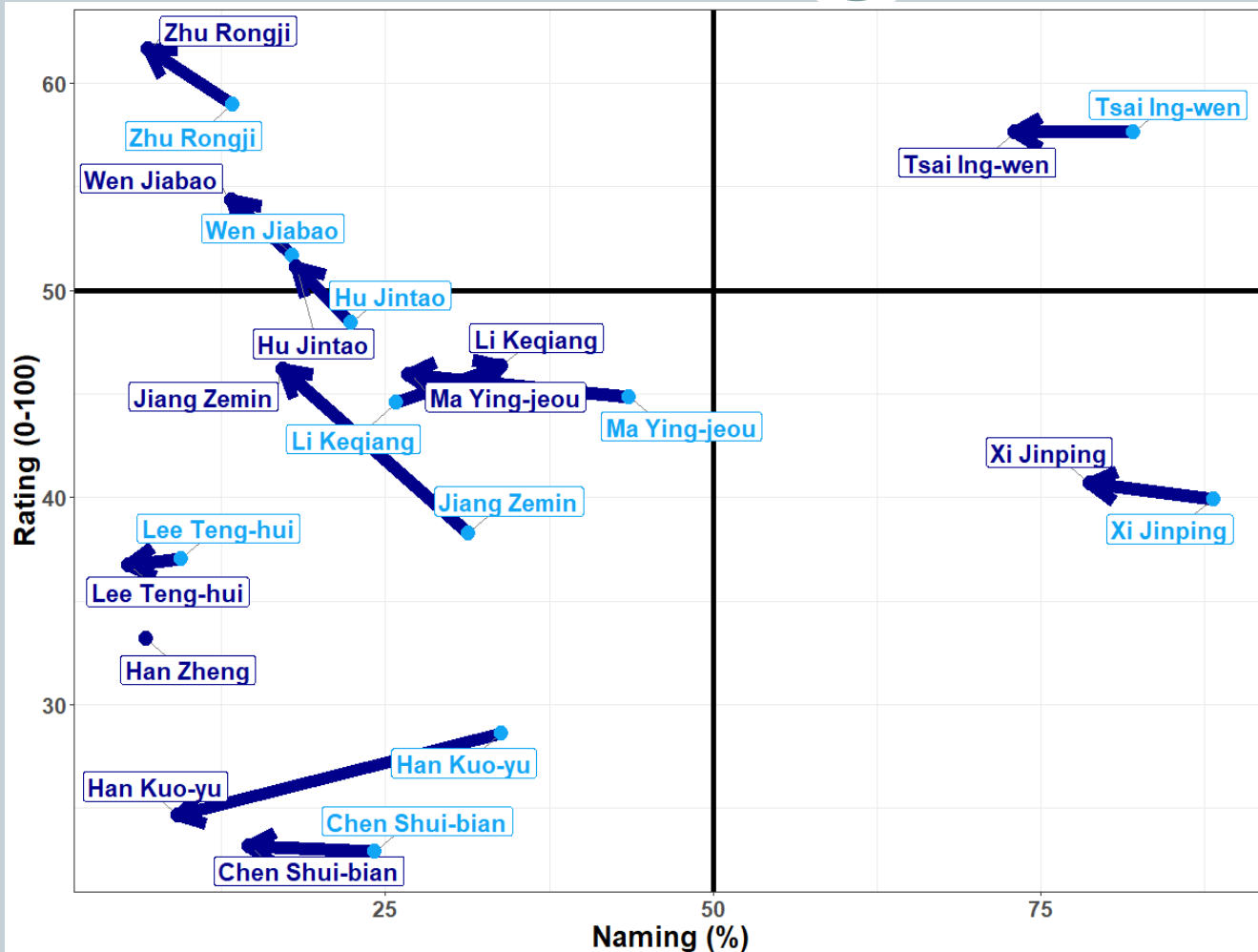
6

市民對兩岸政治人物的支持程度 - 綜合圖表 (按次計算)
 Support rating of Cross-strait political figures – Combined (per poll)
 (7/1997 – 7/2020)



Survey Result - Popularity of Cross-strait political figures

7



Support rating of Cross-strait political figures and naming % chart

- Current Survey
- Last Survey

POP



HONG KONG PUBLIC OPINION PROGRAM

HONG KONG PUBLIC OPINION RESEARCH INSTITUTE

香港民意研究所 之 香港民意研究計劃

Community Democracy Project -

Community Health Module

Press Release

August 4, 2020

Contact Information - PENRI

9

| | HKPOP Panel |
|-------------------|--|
| Date of survey | July 20, 3pm – August 3, 3pm |
| Survey method | Online survey |
| Target population | Hong Kong residents aged 12+ |
| Total sample size | 9,678 |
| Response rate | 12.9% |
| Sampling error | Sampling error of percentages at +/-1% at 95% confidence level |
| Weighting method | The figures are rim-weighted according to 1) gender-age distribution of Hong Kong population and by District Councils population figures from Census and Statistics Department; 2) Voting results of District Councils Election from Registration and Electoral Office; 3) rating distribution of Chief Executive from regular tracking surveys. |

Survey Result - PENRI

10

| Date of Publishing | 19/7 | 20/7 | 21/7 | 22/7 | 23/7 | 24/7 | 25/7 | 26/7 | 27/7 | 28/7 | 29/7 | 30/7 | 31/7 | 1/8 | 2/8 | 3/8 | 4/8 |
|---|-------------|-------------|-------------|-------------|-------------|-------------|-------------|-------------|-------------|-------------|-------------|-------------|-------------|------------|------------|------------|------------|
| Imported cases(Ytd) | 4 | 25 | 7 | 3 | 11 | 7 | 8 | 7 | 25 | 3 | 8 | 5 | 4 | 3 | 1 | 1 | 0 |
| Local infected cases(Ytd) | 60 | 83 | 66 | 58 | 102 | 111 | 115 | 126 | 103 | 142 | 98 | 113 | 145 | 118 | 124 | 114 | 80 |
| Post-Epidemic Work Resumption Index (PEWRI) | - | - | - | 1.7 | 2.2 | 2.2 | 2.2 | 2.3 | 2.3 | 2.3 | 1.9 | 1.9 | 2.0 | 2.2 | 2.2 | 2.1 | 2.1 |
| Post-Epidemic Public-Facilities Re-open Index (PEPRI) | - | - | - | 3.7 | 3.6 | 3.5 | 3.4 | 3.4 | 3.4 | 3.4 | 4.4 | 4.7 | 4.7 | 4.8 | 4.7 | 4.6 | 4.6 |
| Post-Epidemic Gathering Resumption Index (PEGRI) | 10.4 | 10.2 | 10.1 | 8.8 | 9.2 | 9.1 | 9.1 | 9.1 | 9.1 | 9.0 | 10.0 | 10.3 | 10.5 | 10.7 | 10.7 | 10.6 | 10.6 |
| Post-Epidemic Business Resumption Index PEBRI(catering) | - | - | - | 4.4 | 4.8 | 4.8 | 4.8 | 4.8 | 4.8 | 4.8 | 5.9 | 6.0 | 6.0 | 6.2 | 6.3 | 6.2 | 6.2 |

Survey Result - PENRI

11

