

POP



HONG KONG PUBLIC OPINION PROGRAM

HONG KONG PUBLIC OPINION RESEARCH INSTITUTE

香港民意研究所 之 香港民意研究計劃

Latest Tracking Poll Results

Press Release

September 1st, 2020

Contact Information

2

	Naming stage	Evaluation stage
Date of survey	3-6/8/2020	17-20/8/2020
Survey method	Random telephone survey conducted by real interviewers	
Target population	Cantonese-speaking Hong Kong residents aged 18 or above	
Sample size	1,001 (including 500 landline and 501 mobile samples)	1,020 (including 498 landline and 522 mobile samples)
Effective response rate	64.4%	60.9%
Sampling error	Sampling error of percentages not more than +/-4% and that of net values not more than +/-7% at 95% conf. level	
Weighting method	Rim-weighted according to figures provided by the Census and Statistics Department. The gender-age distribution of the Hong Kong population came from “Mid-year population for 2019”, while the educational attainment (highest level attended) distribution and economic activity status distribution came from “Women and Men in Hong Kong - Key Statistics (2019 Edition)”.	

Survey Topic

3

- People's feelings towards different peoples and governments

Survey Result – People's feelings towards different peoples and governments

4

- **Net value of people's feelings towards different governments and peoples**

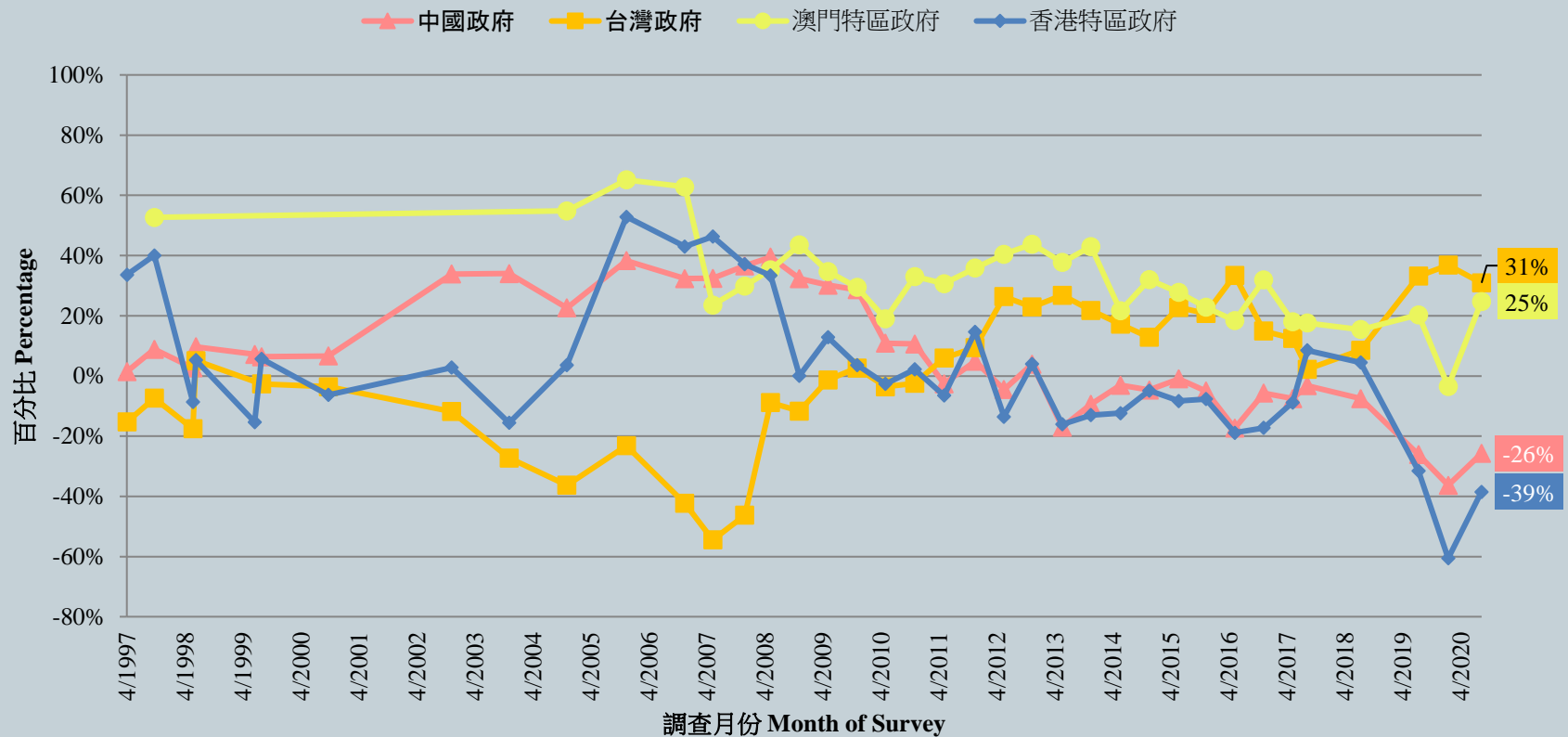
		20-21/1/2020	17-20/8/2020	Change	Record
Hong Kong	People	44%	49%	▲5%	Record high since Jul. 2019
	Government	-61%	-39%	▲22% *	Record high since Jul. 2019
China	People	-7%	0%	▲8%	Record high since Jul. 2018
	Government	-36%	-26%	▲11% *	Record high since Jul. 2018
Taiwan	People	69%	64%	▼5%	Record low since Jul. 2018
	Government	37%	31%	▼6%	Record low since Jul. 2018
Macau	People	42%	45%	▲3%	Record high since Jul. 2019
	Government	-4%	25%	▲28% *	Record high since Nov. 2016

- In terms of net affinity, Hong Kong people feel more positively about all other peoples than their governments. The net affinity for the **governments of the Hong Kong and China** were **negative**. Compared to half a year ago, the net affinity of Hong Kong people towards the **governments of Hong Kong, China and Macau** have **increased** significantly.

Survey Result – People's feelings towards different peoples and governments

5

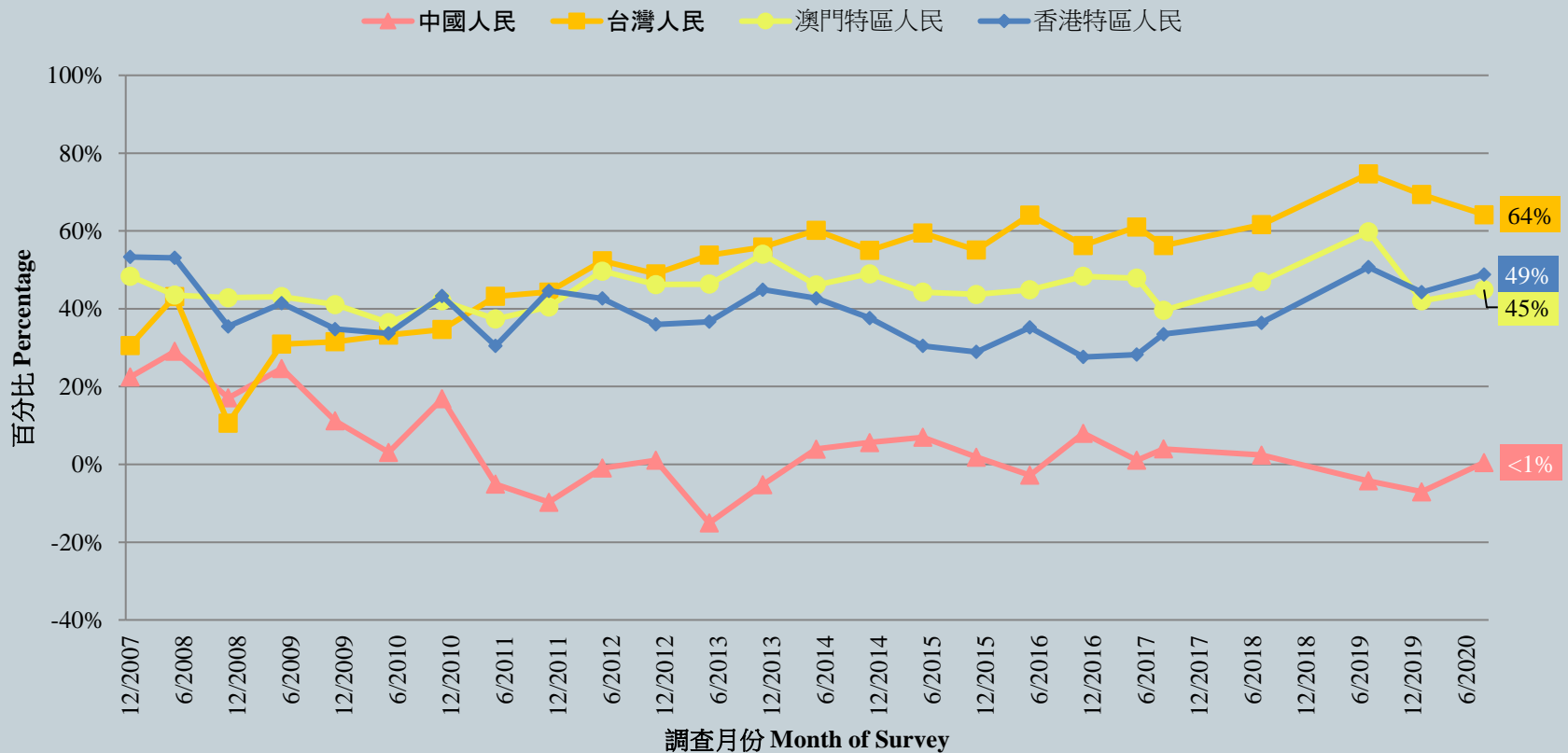
市民對各國政府好感淨值 - 綜合圖表 (按次計算)
People's feeling towards different Governments – Net Value Combined Charts (Per Poll)
(4/1997 – 8/2020)



Survey Result – People's feelings towards different peoples and governments

6

市民對各國人民好感淨值 - 綜合圖表 (按次計算)
 People's feeling towards different People – Net Value Combined Charts (Per Poll)
 (12/2007 – 8/2020)



Survey Result – People's feelings towards different peoples and governments

7

- **Net value of people's feelings towards different governments and peoples**

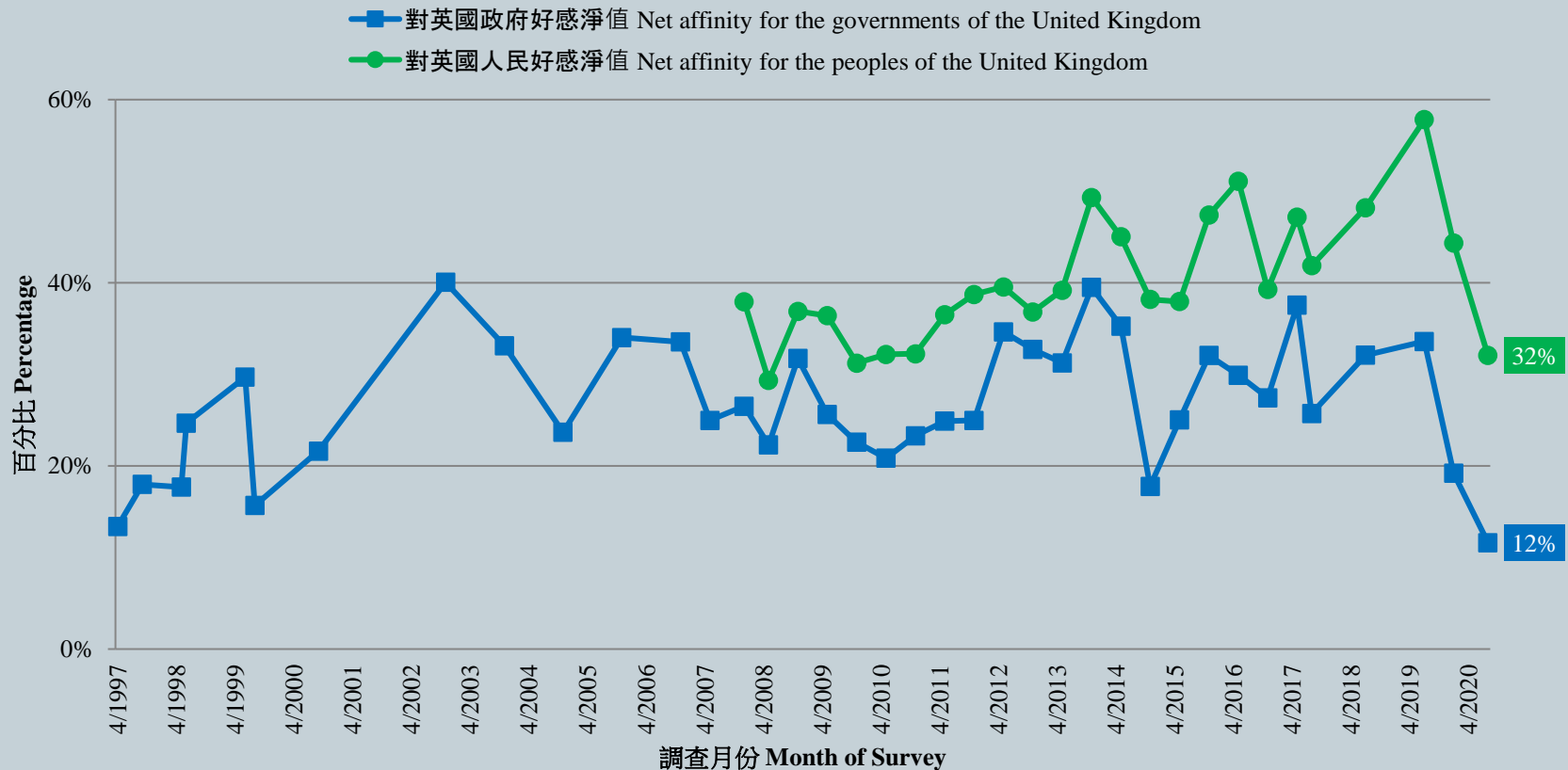
		20-21/1/2020	17-20/8/2020	Change	Record
Japan	People	64%	53%	▼12% *	Record low since Aug. 2017
	Government	29%	18%	▼11% *	Record low since Jul. 2019
Australia	People	50%	37%	▼13% *	All-time record low since Dec. 2007
	Government	26%	22%	▼3%	Record low since Sep. 2000
United Kingdom	People	44%	32%	▼12% *	Record low since Nov. 2009
	Government	19%	12%	▼8%	All-time record low since Apr. 1997
France	People	37%	28%	▼9% *	Record low since Aug. 2017
	Government	18%	11%	▼7% *	Record low since May 2013
United States	People	35%	24%	▼11% *	Record low since Jul. 2018
	Government	-2%	-13%	▼11% *	Record low since Jul. 2019

- The net affinity towards the **peoples of Japan, Australia, the United Kingdom, the France and United States**, as well as the **governments of the Japan, France and United States** have all **decreased** significantly.

Survey Result – People's feelings towards different peoples and governments

9

市民對英國政府人民好感淨值 - 綜合圖表 (按次計算)
Net affinity for the governments and peoples of the United Kingdom – Combined chart (Per Poll)
(4/1997 – 8/2020)



POP



HONG KONG PUBLIC OPINION PROGRAM

HONG KONG PUBLIC OPINION RESEARCH INSTITUTE

香港民意研究所 之 香港民意研究計劃

Community Democracy Project -

Community Health Module

Press Release

September 1st, 2020

Contact Information - PENRI

12

	HKPOP Panel
Date of survey	August 24 th , 3pm – August 31 st , 3pm
Survey method	Online survey
Target population	Hong Kong residents aged 12+
Total sample size	17,997
Response rate	17.6%
Sampling error	Sampling error of percentages at +/-1% at 95% confidence level
Weighting method	The figures are rim-weighted according to 1) gender-age distribution of Hong Kong population and by District Councils population figures from Census and Statistics Department; 2) Voting results of District Councils Election from Registration and Electoral Office; 3) rating distribution of Chief Executive from regular tracking surveys.

Survey Result - PENRI

13

Date of Publication	16/8	17/8	18/8	19/8	20/8	21/8	22/8	23/8	24/8	25/8	26/8	27/8	28/8	29/8	30/8	31/8	1/9
Imported Cases(Ytd)	7	4	13	1	3	1	9	2	6	2	3	0	3	3	2	5	2
Local Infection Cases(Ytd)	39	70	31	35	23	17	18	24	19	7	16	24	18	10	16	10	7
Post-Epidemic Work Resumption Index (PEWRI)	6.9	2.8	6.8	8.3	8.5	10.3	9.6	9.4	9.4	35.1	8.5	8.2	8.6	8.7	8.5	8.4	35.6
Post-Epidemic Public-Facilities Re-open Index (PEPRI)	8.8	5.2	8.7	11.3	11.4	12.8	12.6	12.7	12.8	39.0	9.8	11.0	12.7	12.8	12.5	12.5	38.3
Post-Epidemic Gathering Resumption Index (PEGRI)	15.6	11.5	15.5	18.0	18.1	19.9	19.2	19.3	19.3	44.0	18.1	17.5	19.1	19.3	19.9	19.9	40.7
Post-Epidemic Business Resumption PEBRI(catering)	11.6	7.3	11.5	14.9	15.0	16.6	16.1	16.0	16.2	45.9	12.6	13.0	14.8	14.9	14.5	14.6	45.7

Survey Result - PENRI

14

