

# POP



---

HONG KONG PUBLIC OPINION PROGRAM

HONG KONG PUBLIC OPINION RESEARCH INSTITUTE

香港民意研究所 之 香港民意研究計劃

---

**Community Democracy Project -**

**Community Health Module**

**Latest Results**

**November 20, 2020**

# Contact Information - Community Health Module

2

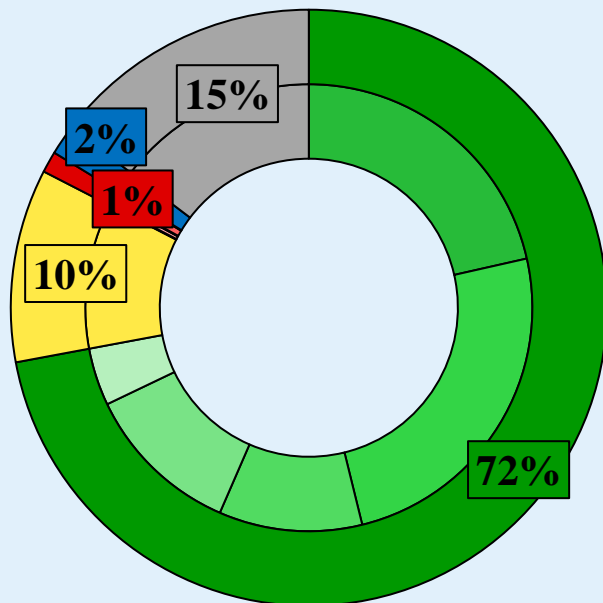
	<b>HKPOP Panel</b>	
Date of survey	November 12, 3pm – November 19, 3pm	
Survey method	Online survey	
Target population	Hong Kong residents aged 12+	
	Representative Panel	Volunteer Panel
Total sample size	445	4,688
Response rate	10.5%	10.4%
Sampling error	Sampling error of percentages at +/-5% at 95% confidence level	Sampling error of percentages at +/-1% at 95% confidence level
Weighting method	The figures are rim-weighted according to 1) gender-age distribution of Hong Kong population and by District Councils population figures from Census and Statistics Department; 2) Voting results of District Councils Election from Registration and Electoral Office; 3) rating distribution of Chief Executive from regular tracking surveys.	

# In order to avoid response fatigue, email invitations are only sent to around half of the panel members under systematic sampling since Nov 2.

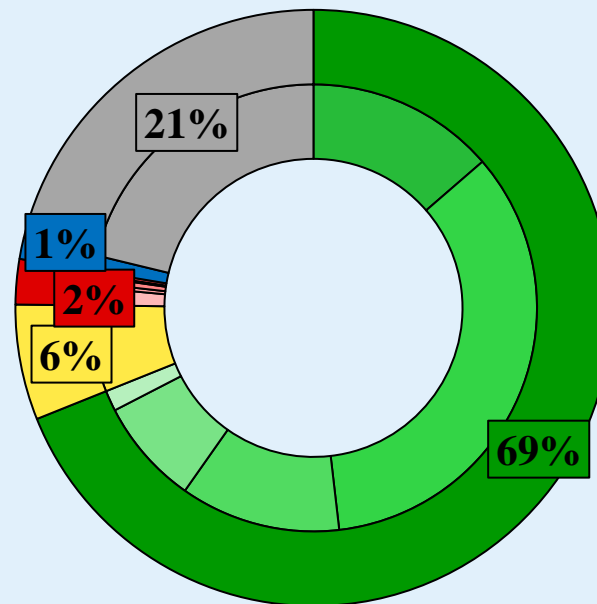
# Survey Result - Community Health Module

3

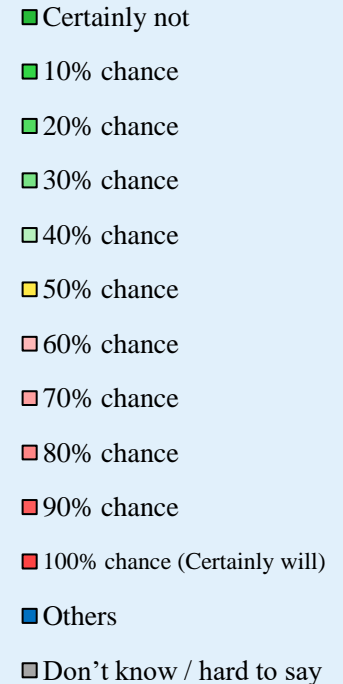
- Latest survey period: 12-19/11/2020
- Question: How likely do you think it is that you will contract novel coronavirus pneumonia over the next one month?



Representative Panel



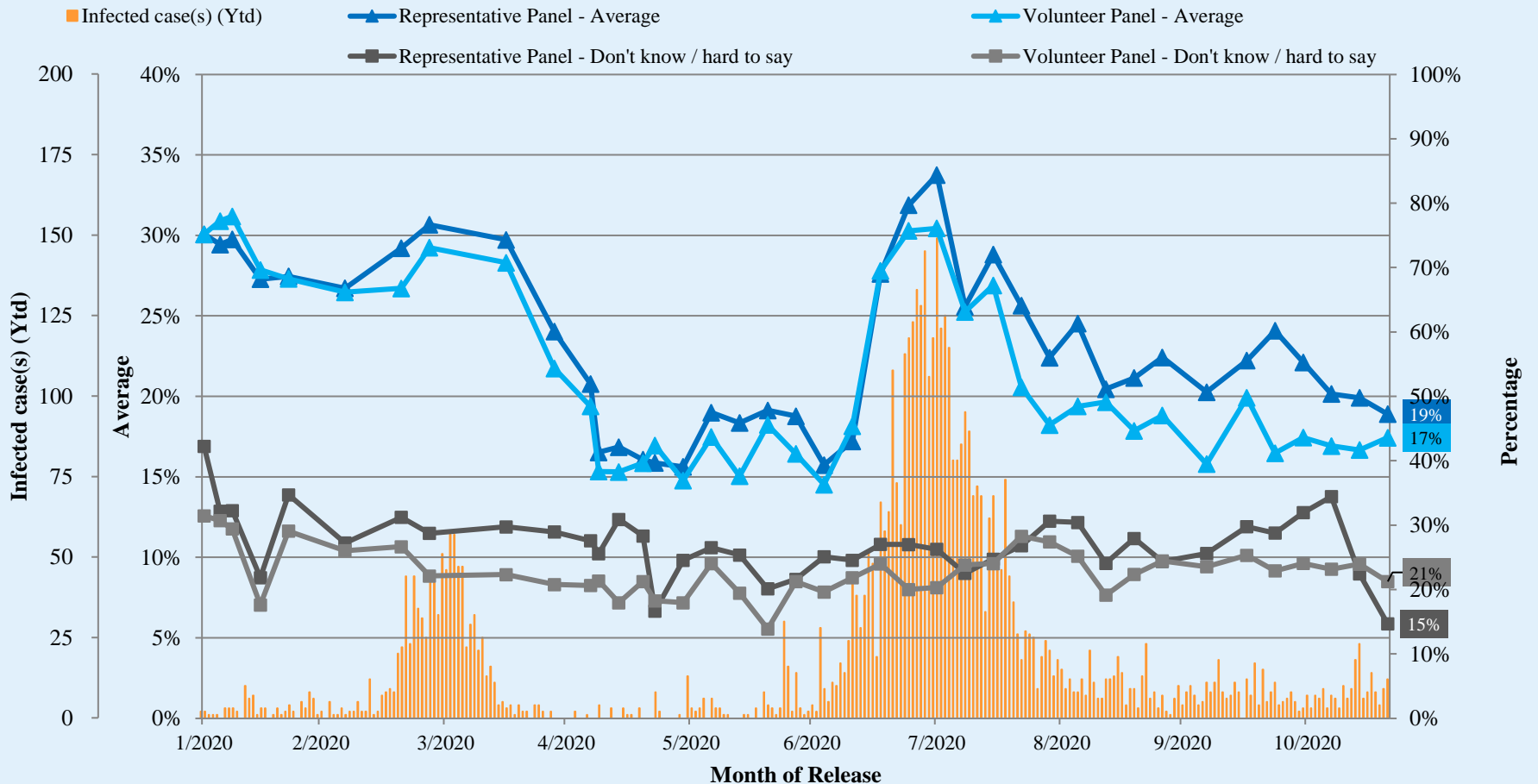
Volunteer Panel



^ Answer options included: 0-10 rating scale, others and don't know / hard to say.

# Survey Result - Community Health Module

## Assessment of the public's expected chance of COVID-19 infection



^ Answer options included: 0-10 rating scale, others and don't know / hard to say.

# Survey Result - Community Health Module

5

- Latest survey period: 12-19/11/2020
- Last survey period: 5-12/11/2020 (*Representative Panel N=421 Volunteer Panel N=4,729*)
- Second last survey period: 29/10-5/11/2020 (*Representative Panel N=482 Volunteer Panel N=5,661*)

Opinion Question <sup>^</sup>		Representative Panel (N=444)				Volunteer Panel (N=4,677)			
		Satisfied	Half-half	Dissatisfied	Mean <sup>†</sup>	Satisfied	Half-half	Dissatisfied	Mean <sup>†</sup>
Q2 How satisfied or dissatisfied are you with the government's performance in handling novel coronavirus pneumonia?	Latest	34% ▲*	5% ▼*	<b>61%</b>	2.4	27% ▲*	9% ▼*	<b>63%</b>	2.2 ▲*
	Last	21%	17%	<b>61%</b>	2.2	23%	12%	<b>65%</b>	2.1
	Second Last	29%	10%	<b>60%</b>	2.2	26%	7%	<b>66%</b>	2.1

<sup>^</sup> Answer options included: very much satisfied, somewhat satisfied, half-half, somewhat dissatisfied, very much dissatisfied and don't know / hard to say

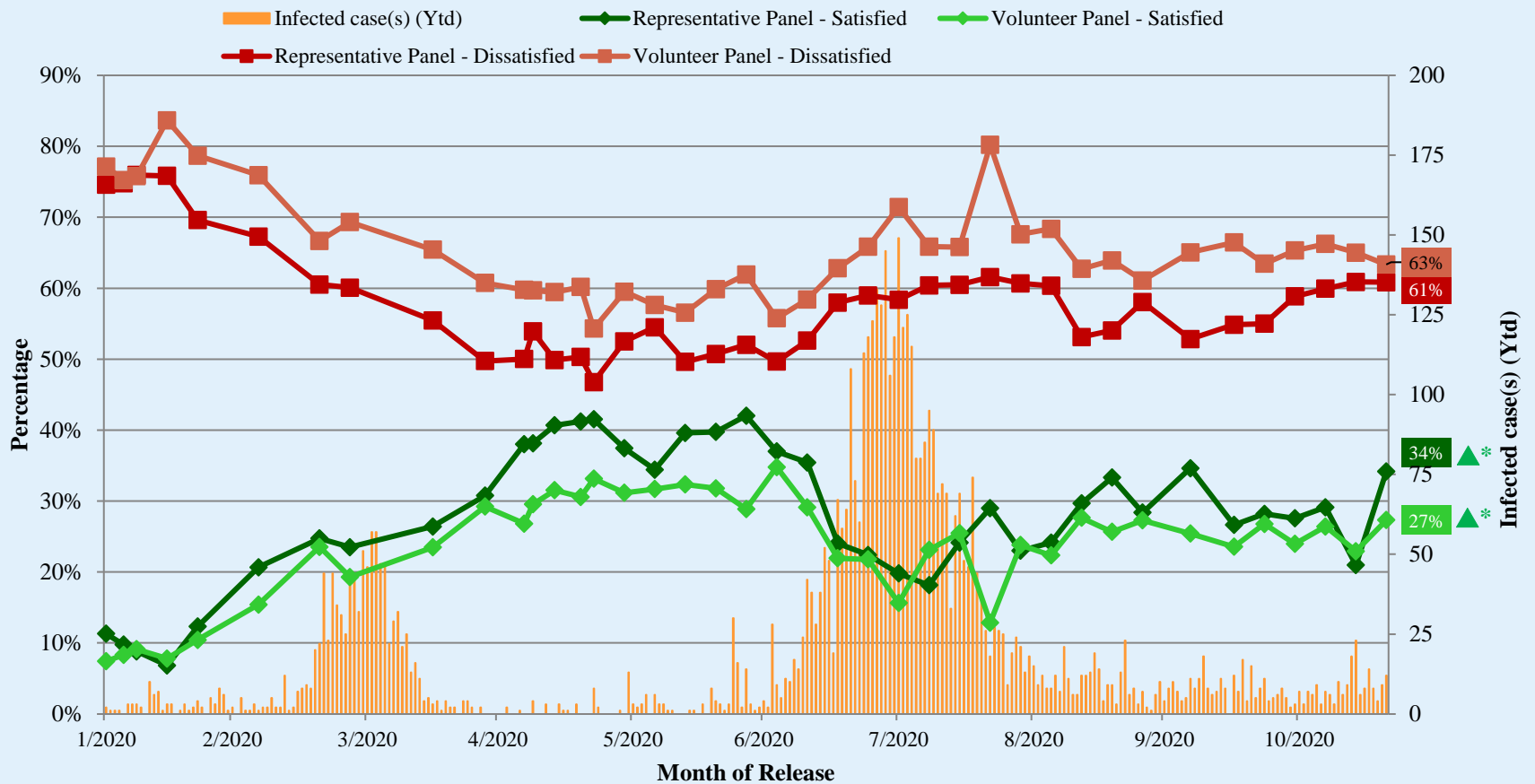
<sup>†</sup> The mean value is calculated by quantifying all individual responses into 1, 2, 3, 4, 5 marks according to their degree of positive level, where 1 is the lowest and 5 the highest, and then calculate the sample mean.

\* Significant change

# Survey Result - Community Health Module

6

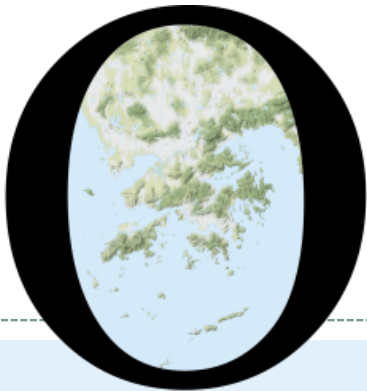
## Appraisal of HK Government's performance in handling novel coronavirus pneumonia



^ Answer options included: very much satisfied, somewhat satisfied, half-half, somewhat dissatisfied, very much dissatisfied and don't know / hard to say.

\* Significant change

# POP



---

HONG KONG PUBLIC OPINION PROGRAM

HONG KONG PUBLIC OPINION RESEARCH INSTITUTE

香港民意研究所 之 香港民意研究計劃

---

**Community Democracy Project - Community Health Module**

**Post-Epidemic Normality Resumption Index (PENRI)**

**Latest Results**

**November 20, 2020**

# Contact Information - PENRI

8

	<b>HKPOP Panel</b>
Date of survey	November 2, 3pm – November 19, 3pm
Survey method	Online survey
Target population	Hong Kong residents aged 12+
Total sample size <sup>#</sup>	10,130
Response rate	9.6%
Sampling error	Sampling error of percentages at +/-1% at 95% confidence level
Weighting method	The figures are rim-weighted according to 1) gender-age distribution of Hong Kong population and by District Councils population figures from Census and Statistics Department; 2) Voting results of District Councils Election from Registration and Electoral Office; 3) rating distribution of Chief Executive from regular tracking surveys.

<sup>#</sup> In order to avoid response fatigue, email invitations are only sent to around half of the panel members under systematic sampling since Nov 2.



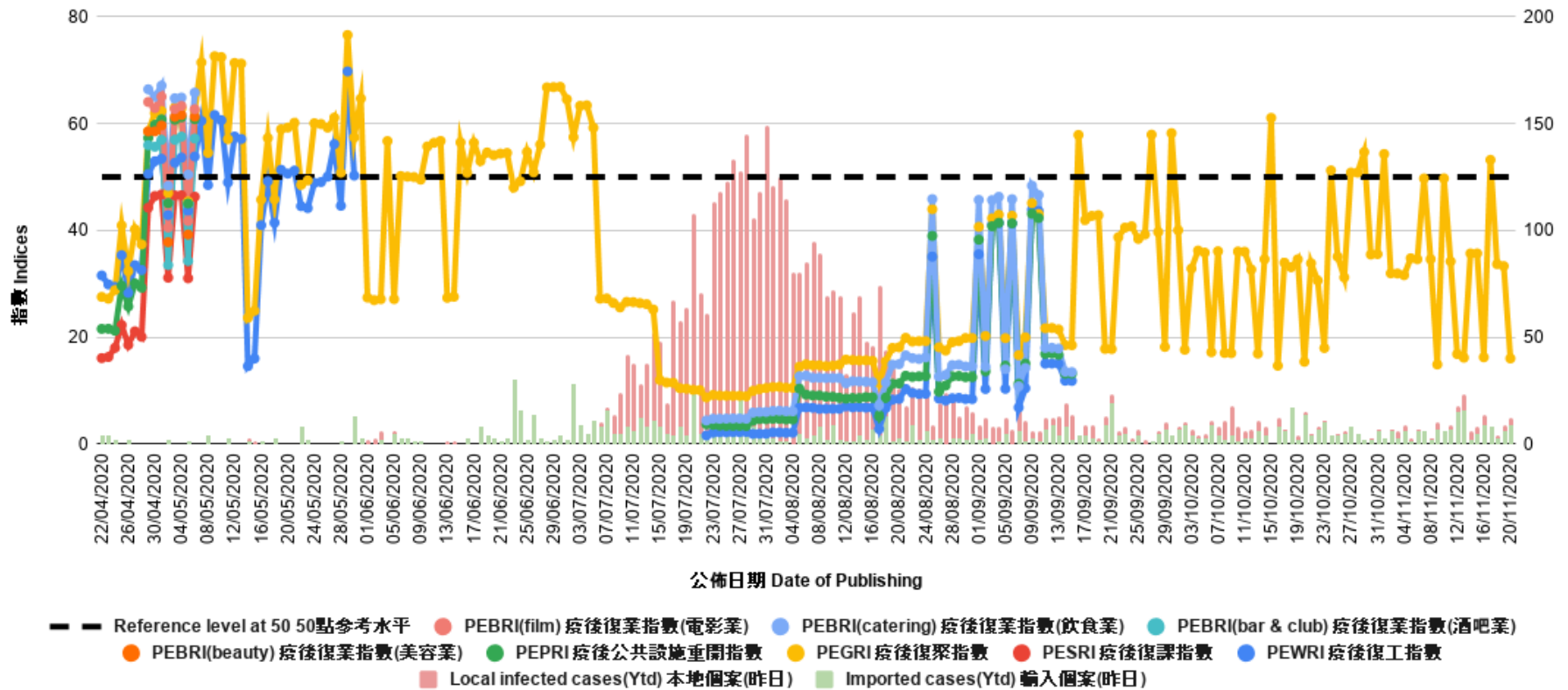
# Survey Result - PENRI

9

<b>Date of Publication</b>	<b><u>6/11</u></b>	<b><u>7/11</u></b>	<b><u>8/11</u></b>	<b><u>9/11</u></b>	<b><u>10/11</u></b>	<b><u>11/11</u></b>	<b><u>12/11</u></b>	<b><u>13/11</u></b>	<b><u>14/11</u></b>	<b><u>15/11</u></b>	<b><u>16/11</u></b>	<b><u>17/11</u></b>	<b><u>18/11</u></b>	<b><u>19/11</u></b>	<b><u>20/11</u></b>
<b>Imported Cases(Ytd)</b>	<b>6</b>	<b>6</b>	<b>2</b>	<b>7</b>	<b>6</b>	<b>7</b>	<b>15</b>	<b>16</b>	<b>2</b>	<b>5</b>	<b>9</b>	<b>8</b>	<b>3</b>	<b>6</b>	<b>9</b>
<b>Local Infection Cases(Ytd)</b>	<b>1</b>	<b>0</b>	<b>1</b>	<b>3</b>	<b>0</b>	<b>2</b>	<b>3</b>	<b>7</b>	<b>4</b>	<b>3</b>	<b>5</b>	<b>0</b>	<b>1</b>	<b>3</b>	<b>3</b>
Post-Epidemic Gathering Resumption Index (PEGRI)	34.6	49.7	34.6	14.9	49.8	34.2	16.9	16.2	35.7	35.7	16.3	53.2	33.7	33.3	16.1

# Survey Result - PENRI

10



# POP



---

HONG KONG PUBLIC OPINION PROGRAM

HONG KONG PUBLIC OPINION RESEARCH INSTITUTE

香港民意研究所 之 香港民意研究計劃

---

**“We Hongkongers” Panel Survey**

**Latest Results**

**November 20, 2020**

# Contact Information - “We Hongkongers” Panel Survey

12

	<b>HKPOP Panel</b>
Date of survey	November 16, 3pm – November 19, 3pm
Survey method	Online survey
Target population	Hong Kong residents aged 12+
Total sample size <sup>#</sup>	4,843
Response rate	9.9%
Sampling error	Sampling error of percentages at +/-1% at 95% confidence level
Weighting method	The figures are rim-weighted according to 1) gender-age distribution, educational attainment (highest level attended) distribution, economic activity status distribution of Hong Kong population and by District Councils population figures from Census and Statistics Department; 2) Voting results of District Councils Election from Registration and Electoral Office; 3) rating distribution of Chief Executive from regular tracking surveys.

# In order to avoid response fatigue, email invitations are only sent to around half of the panel members under systematic sampling since Nov 2.

# Survey Result - “We Hongkongers” Panel Survey

- Latest survey period: 16-19/11/2020
- Question: There is a saying the recent arrest of a journalist for conducting vehicle registration searches would suppress press freedom. How much do you support or oppose this saying?

	Pro-democracy camp supporters (n=4,128)	Non-pro-democracy camp supporters* (n=429)	Combined^ (n=4,557)
Very much support	85%	24%	52%
Somewhat support	9%	10%	9%
Half-half	<1%	11%	6%
Somewhat oppose	<1%	16%	9%
Very much oppose	6%	36%	22%
Don't know / Hard to say	<1%	3%	2%
Mean†	4.7	2.7	3.6

\* Include: pro-establishment camp supporters, centrist supporters, no political inclination / politically neutral / do not belong to any camp

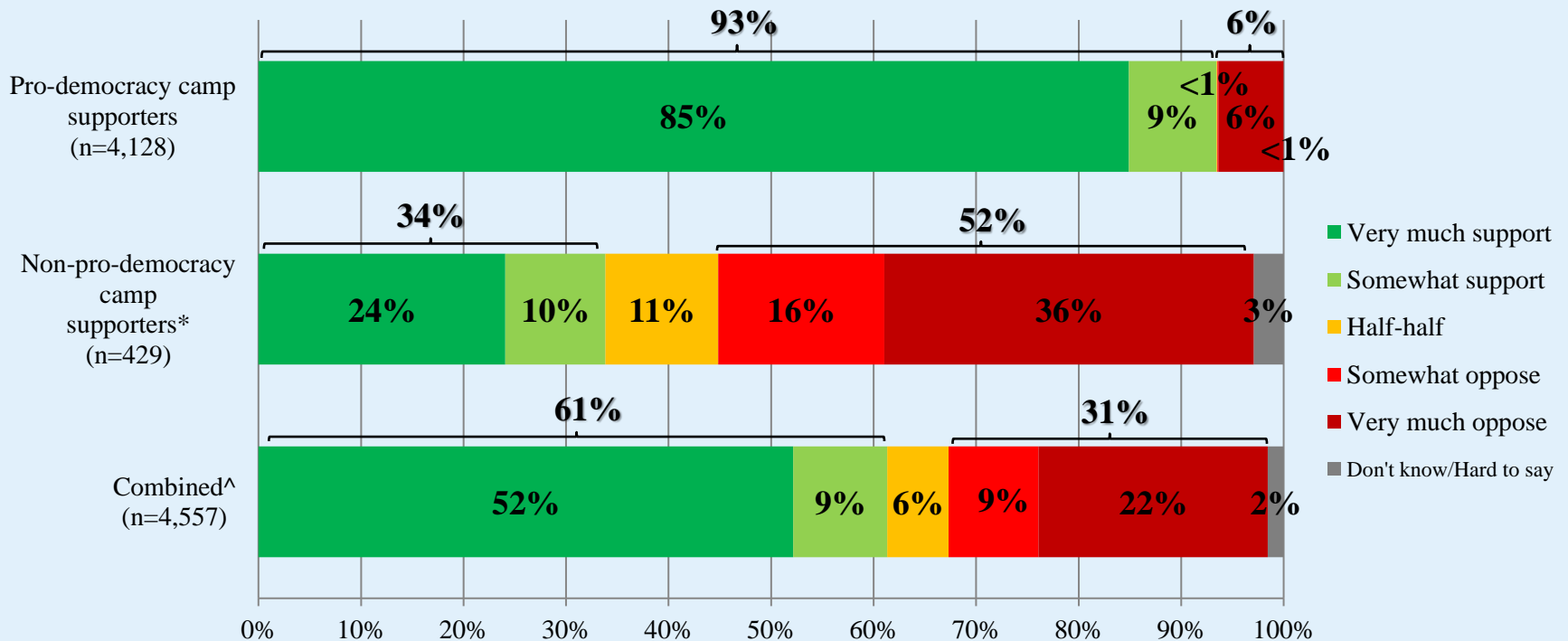
^ The aggregated figures come from adjusting the by-group weighted figures using ratio of “pan-democratic” vs “non-pan-democratic” collected in regular tracking survey.

† The mean value is calculated by quantifying all individual responses into 1, 2, 3, 4, 5 marks according to their degree of positive level, where 1 is the lowest and 5 the highest, and then calculate the sample mean.

# Survey Result - “We Hongkongers” Panel Survey

14

- Latest survey period: 16-19/11/2020
- Question: There is a saying the recent arrest of a journalist for conducting vehicle registration searches would suppress press freedom. How much do you support or oppose this saying?



\* Include: pro-establishment camp supporters, centrist supporters, no political inclination / politically neutral / do not belong to any camp

^ The aggregated figures come from adjusting the by-group weighted figures using ratio of “pan-democratic” vs “non-pan-democratic” collected in regular tracking survey.