

# POP



---

HONG KONG PUBLIC OPINION PROGRAM

HONG KONG PUBLIC OPINION RESEARCH INSTITUTE

香港民意研究所 之 香港民意研究計劃

---

**Community Democracy Project -**

**Community Health Module**

**Latest Results**

**December 1, 2020**

# Contact Information - Community Health Module

2

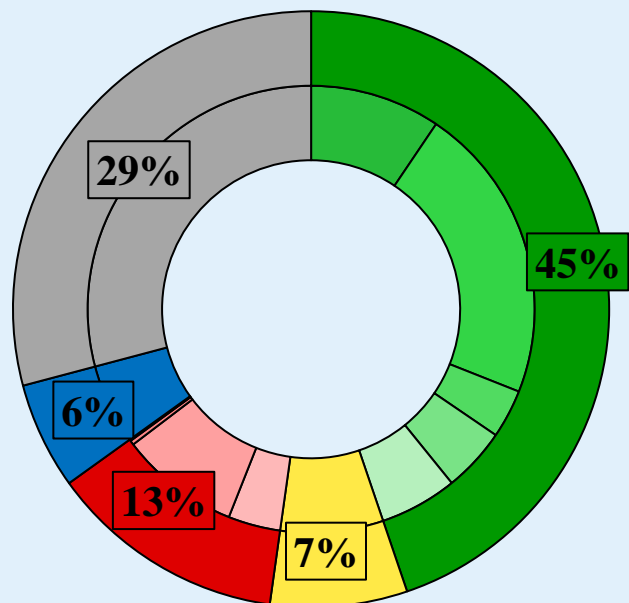
	<b>HKPOP Panel</b>	
Date of survey	November 19, 3pm – November 30, 3pm	
Survey method	Online survey	
Target population	Hong Kong residents aged 12+	
	Representative Panel	Volunteer Panel
Total sample size <sup>#</sup>	278	2,590
Response rate	6.4%	5.8%
Sampling error	Sampling error of percentages at +/-6% at 95% confidence level	Sampling error of percentages at +/-2% at 95% confidence level
Weighting method	The figures are rim-weighted according to 1) gender-age distribution of Hong Kong population and by District Councils population figures from Census and Statistics Department; 2) Voting results of District Councils Election from Registration and Electoral Office; 3) rating distribution of Chief Executive from regular tracking surveys.	

# In order to avoid response fatigue, email invitations are only sent to around half of the panel members under systematic sampling since Nov 2.

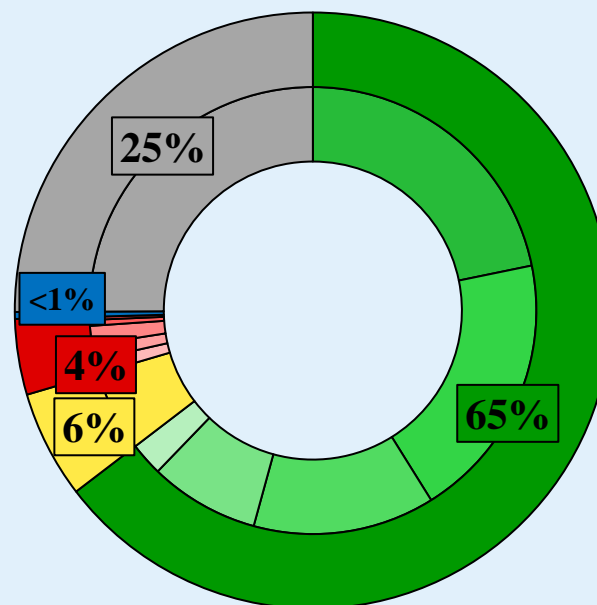
# Survey Result - Community Health Module

3

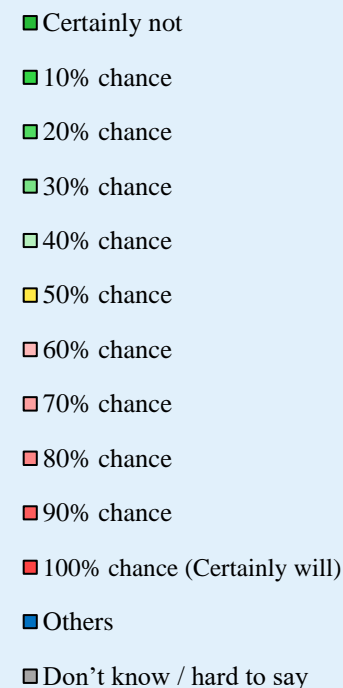
- Latest survey period: 19-30/11/2020
- Question: How likely do you think it is that you will contract novel coronavirus pneumonia over the next one month? [Linear Scale]



Representative Panel



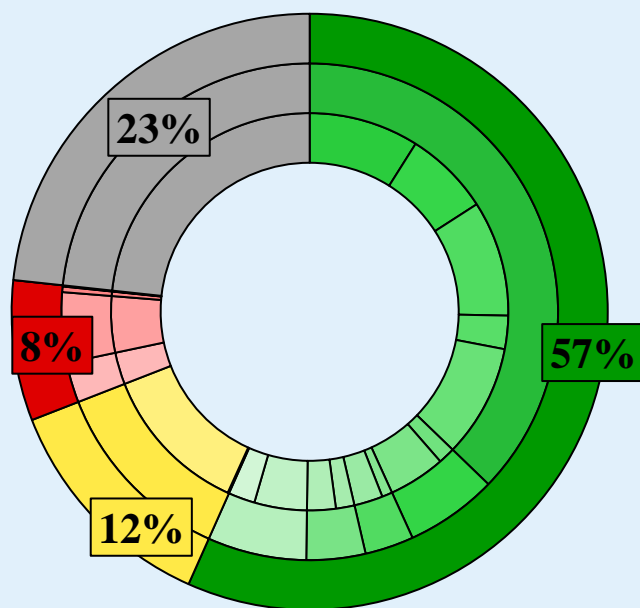
Volunteer Panel



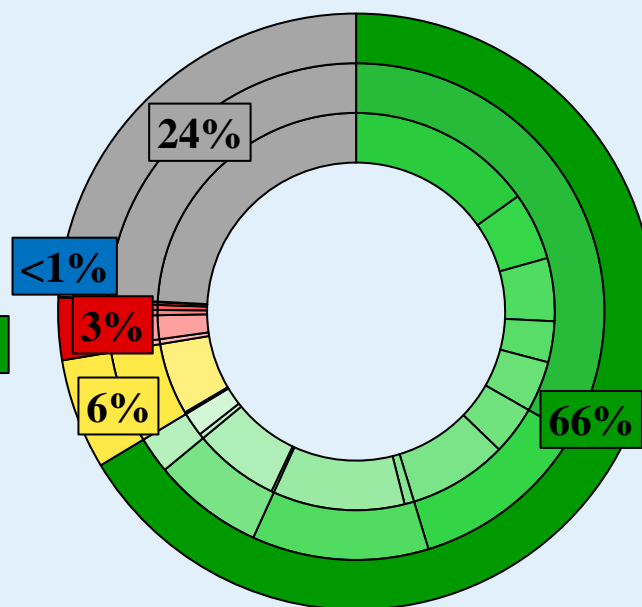
^ Answer options included: 0-10 rating scale, others and don't know / hard to say. Apart from the linear scale, this question with answer options on a logarithmic scale has been asked since Oct 2020.

# Survey Result - Community Health Module

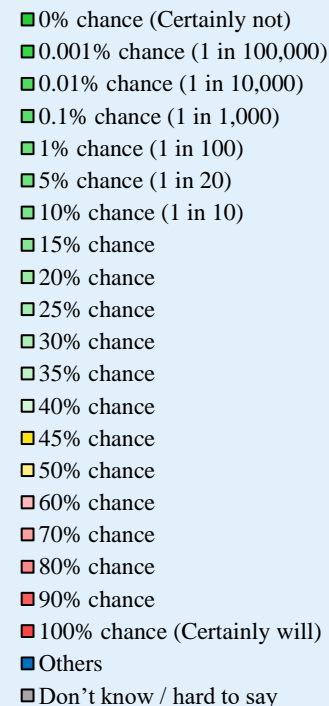
- Latest survey period: 19-30/11/2020
- Question: How likely do you think it is that you will contract novel coronavirus pneumonia over the next one month? [Logarithmic Scale]



Representative Panel



Volunteer Panel

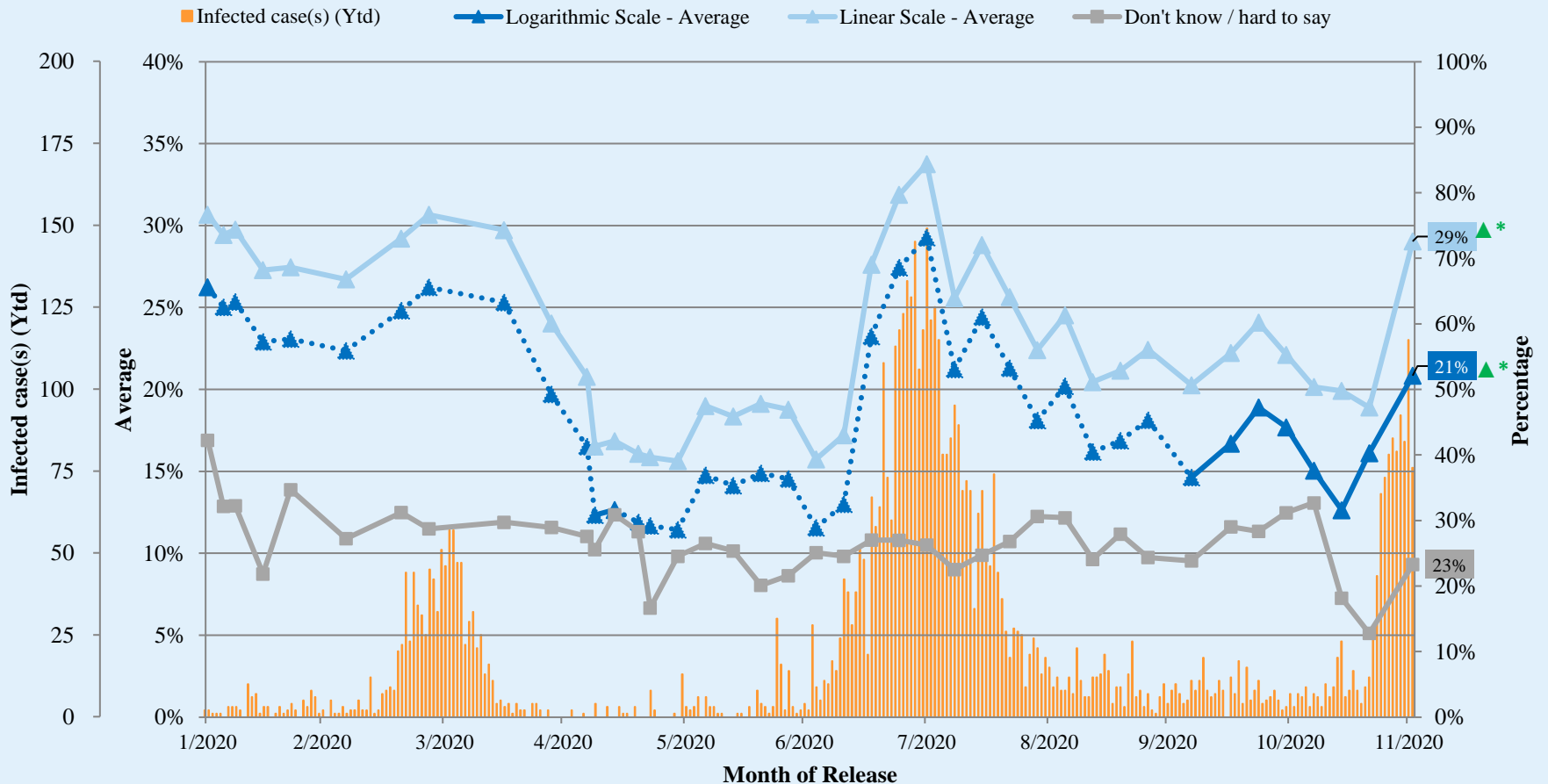


^ Answer options included: 0-10 rating scale, others and don't know / hard to say. Apart from the linear scale, this question with answer options on a logarithmic scale has been asked since Oct 2020.

# Survey Result - Community Health Module

5

## Assessment of the public's expected chance of COVID-19 infection (Representative Panel)



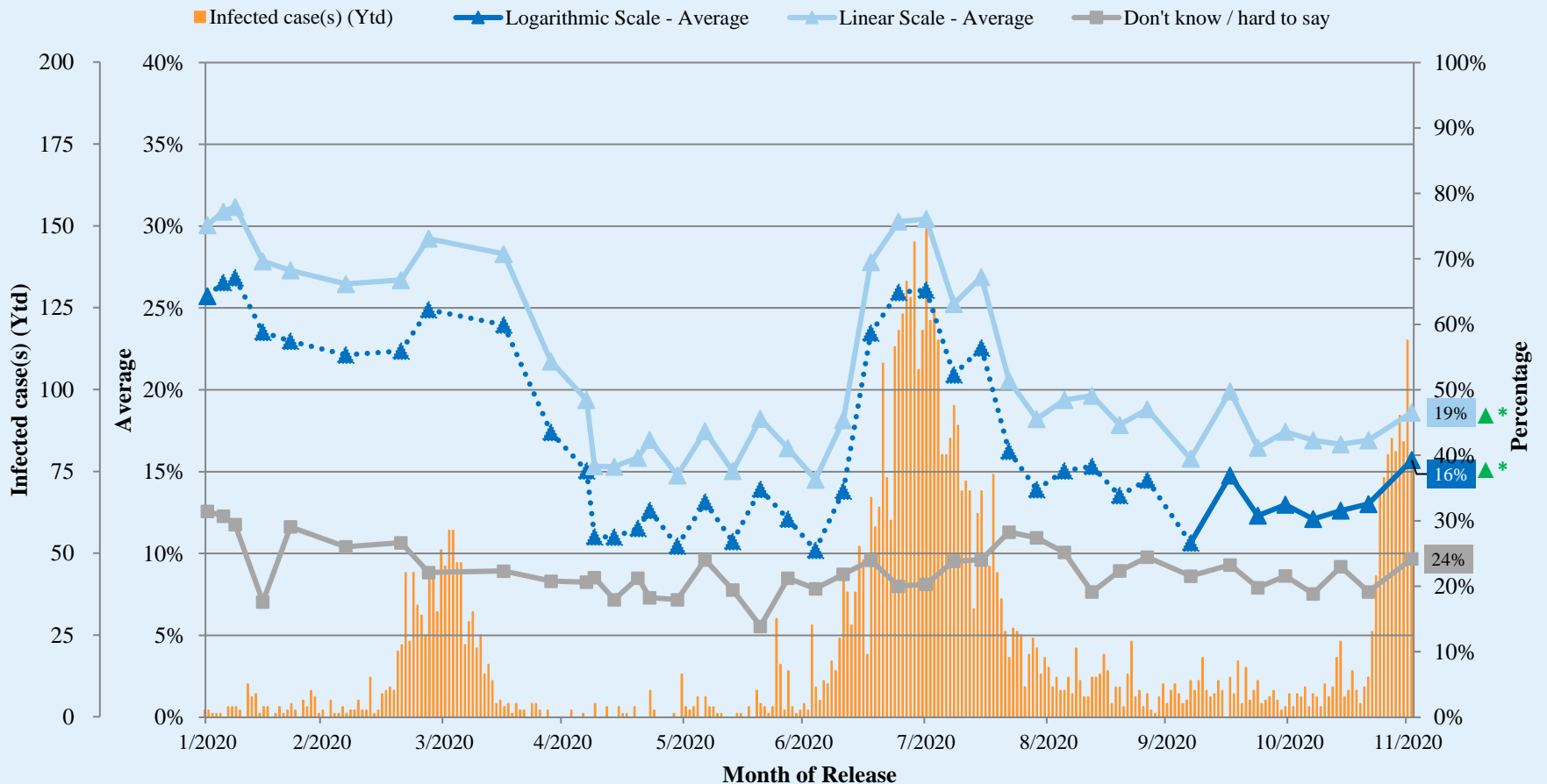
^ Answer options included: 0-10 rating scale, others and don't know / hard to say. Apart from the linear scale, this question with answer options on a logarithmic scale has been asked since Oct 2020.

\* Significant change

# Survey Result - Community Health Module

6

Assessment of the public's expected chance of COVID-19 infection (Volunteer Panel)



^ Answer options included: 0-10 rating scale, others and don't know / hard to say. Apart from the linear scale, this question with answer options on a logarithmic scale has been asked since Oct 2020.

\* Significant change

# Survey Result - Community Health Module

7

- **Latest survey period: 19-30/11/2020**
- **Last survey period: 12-19/11/2020** (*Representative Panel N=444 Volunteer Panel N=4,677*)
- **Second last survey period: 5-12/11/2020** (*Representative Panel N=421 Volunteer Panel N=4,729*)

Opinion Question <sup>^</sup>		Representative Panel (N=278)				Volunteer Panel (N=2,588)			
		Satisfied	Half-half	Dissatisfied	Mean <sup>†</sup>	Satisfied	Half-half	Dissatisfied	Mean <sup>†</sup>
Q2 How satisfied or dissatisfied are you with the government's performance in handling novel coronavirus pneumonia?	Latest	16% ▼*	34% ▲*	50% ▼*	2.2	22% ▼*	12% ▲*	67% ▲*	2.0 ▼*
	Last	34%	5%	61%	2.4	27%	9%	63%	2.2
	Second Last	21%	17%	61%	2.2	23%	12%	65%	2.1

<sup>^</sup> Answer options included: very much satisfied, somewhat satisfied, half-half, somewhat dissatisfied, very much dissatisfied and don't know / hard to say

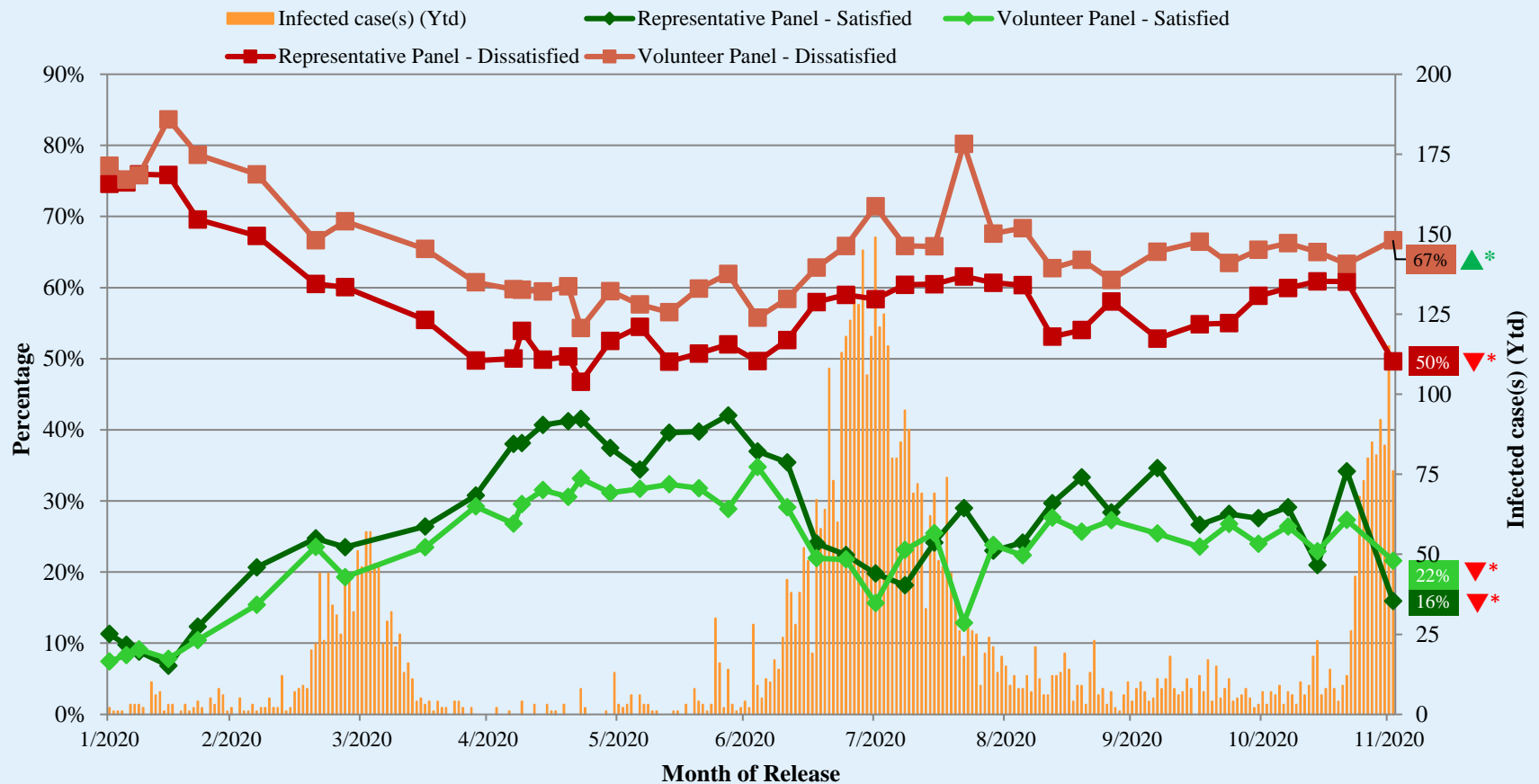
<sup>†</sup> The mean value is calculated by quantifying all individual responses into 1, 2, 3, 4, 5 marks according to their degree of positive level, where 1 is the lowest and 5 the highest, and then calculate the sample mean.

\* Significant change

# Survey Result - Community Health Module

8

## Appraisal of HK Government's performance in handling novel coronavirus pneumonia



^ Answer options included: very much satisfied, somewhat satisfied, half-half, somewhat dissatisfied, very much dissatisfied and don't know / hard to say

\* Significant change



# POP



---

HONG KONG PUBLIC OPINION PROGRAM

HONG KONG PUBLIC OPINION RESEARCH INSTITUTE

香港民意研究所 之 香港民意研究計劃

---

**Community Democracy Project - Community Health Module**

**Post-Epidemic Normality Resumption Index (PENRI)**

**Latest Results**

**December 1, 2020**

# Contact Information - PENRI

10

	<b>HKPOP Panel</b>
Date of survey	November 2, 3pm – November 30, 3pm
Survey method	Online survey
Target population	Hong Kong residents aged 12+
Total sample size <sup>#</sup>	8,165
Response rate	8.3%
Sampling error	Sampling error of percentages at +/-1% at 95% confidence level
Weighting method	The figures are rim-weighted according to 1) gender-age distribution of Hong Kong population and by District Councils population figures from Census and Statistics Department; 2) Voting results of District Councils Election from Registration and Electoral Office; 3) rating distribution of Chief Executive from regular tracking surveys.

<sup>#</sup> In order to avoid response fatigue, email invitations are only sent to around half of the panel members under systematic sampling since Nov 2.

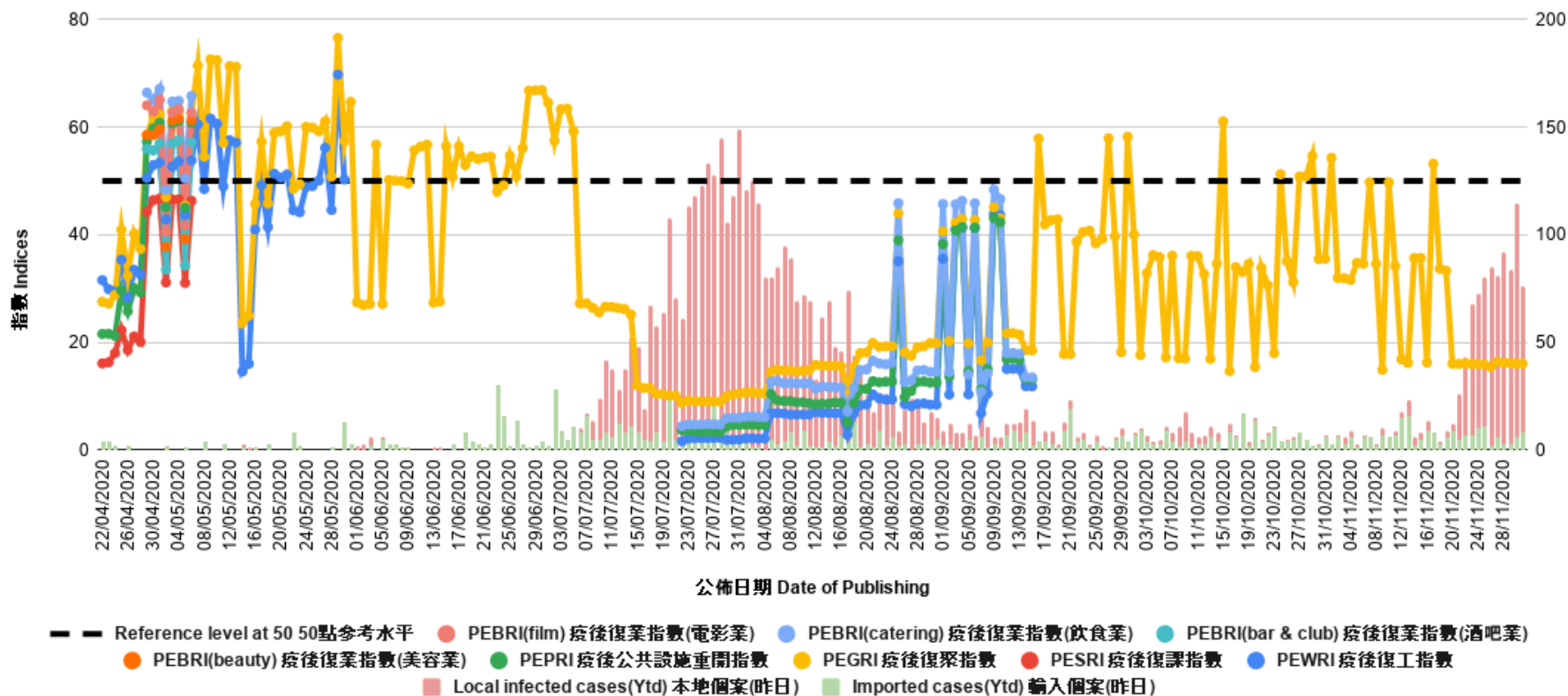
# Survey Result - PENRI

11

<b>Date of Publication</b>	<b><u>17/11</u></b>	<b><u>18/11</u></b>	<b><u>19/11</u></b>	<b><u>20/11</u></b>	<b><u>21/11</u></b>	<b><u>22/11</u></b>	<b><u>23/11</u></b>	<b><u>24/11</u></b>	<b><u>25/11</u></b>	<b><u>26/11</u></b>	<b><u>27/11</u></b>	<b><u>28/11</u></b>	<b><u>29/11</u></b>	<b><u>30/11</u></b>	<b><u>1/12</u></b>
<b>Imported Cases(Ytd)</b>	<b>8</b>	<b>3</b>	<b>6</b>	<b>9</b>	<b>5</b>	<b>7</b>	<b>7</b>	<b>10</b>	<b>11</b>	<b>2</b>	<b>6</b>	<b>3</b>	<b>3</b>	<b>6</b>	<b>8</b>
<b>Local Infection Cases(Ytd)</b>	<b>0</b>	<b>1</b>	<b>3</b>	<b>3</b>	<b>21</b>	<b>36</b>	<b>61</b>	<b>63</b>	<b>69</b>	<b>83</b>	<b>75</b>	<b>89</b>	<b>81</b>	<b>109</b>	<b>68</b>
Post-Epidemic Gathering Resumption Index (PEGRI)	53.2	33.7	33.3	16.1	16.0	16.1	16.0	16.0	15.9	15.5	16.4	16.2	16.2	16.1	16.1

# Survey Result - PENRI

12



# POP



---

HONG KONG PUBLIC OPINION PROGRAM

HONG KONG PUBLIC OPINION RESEARCH INSTITUTE

香港民意研究所 之 香港民意研究計劃

---

**“We Hongkongers” Panel Survey**

**Latest Results**

**December 1, 2020**

# Contact Information - “We Hongkongers” Panel Survey

14

	<b>HKPOP Panel</b>
Date of survey	November 24, 3pm – November 30, 3pm
Survey method	Online survey
Target population	Hong Kong residents aged 12+
Total sample size <sup>#</sup>	2,649
Response rate	5.4%
Sampling error	Sampling error of percentages at +/-2% at 95% confidence level
Weighting method	The figures are rim-weighted according to 1) gender-age distribution, educational attainment (highest level attended) distribution, economic activity status distribution of Hong Kong population and by District Councils population figures from Census and Statistics Department; 2) Voting results of District Councils Election from Registration and Electoral Office; 3) rating distribution of Chief Executive from regular tracking surveys.

# In order to avoid response fatigue, email invitations are only sent to around half of the panel members under systematic sampling since Nov 2.

# Survey Result - “We Hongkongers” Panel Survey

15

- Latest survey period: 24-30/11/2020
- Question: The Education Bureau deregistered a teacher from Ho Lap Primary School for having made serious mistakes in his teaching. How much do you support or oppose this decision?

	Pro-democracy camp supporters (n=2,266)	Non-pro-democracy camp supporters* (n=237)	Combined^ (n=2,503)
Very much support	3%	56%	29%
Somewhat support	1%	14%	7%
Half-half	1%	1%	1%
Somewhat oppose	3%	6%	5%
Very much oppose	92%	22%	58%
Don't know / Hard to say	<1%	1%	<1%
Mean†	1.2	3.8	2.5

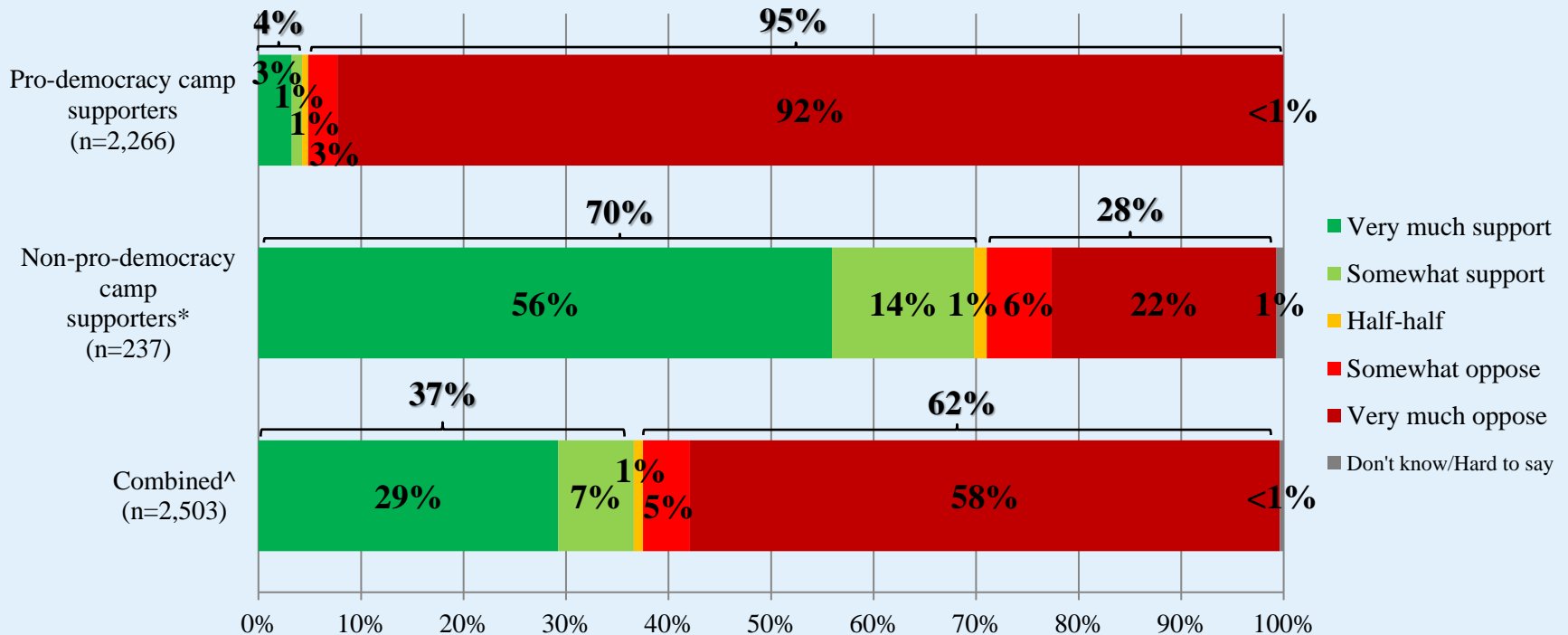
\* Include: pro-establishment camp supporters, centrist supporters, no political inclination / politically neutral / do not belong to any camp

^ The aggregated figures come from adjusting the by-group weighted figures using ratio of “pan-democratic” vs “non-pan-democratic” collected in regular tracking survey.

† The mean value is calculated by quantifying all individual responses into 1, 2, 3, 4, 5 marks according to their degree of positive level, where 1 is the lowest and 5 the highest, and then calculate the sample mean.

# Survey Result - “We Hongkongers” Panel Survey

- Latest survey period: 24-30/11/2020
- Question: The Education Bureau deregistered a teacher from Ho Lap Primary School for having made serious mistakes in his teaching. How much do you support or oppose this decision?



\* Include: pro-establishment camp supporters, centrist supporters, no political inclination / politically neutral / do not belong to any camp

^ The aggregated figures come from adjusting the by-group weighted figures using ratio of “pan-democratic” vs “non-pan-democratic” collected in regular tracking survey.