

POP



HONG KONG PUBLIC OPINION PROGRAM

HONG KONG PUBLIC OPINION RESEARCH INSTITUTE

香港民意研究所 之 香港民意研究計劃

Latest Tracking Poll Results

January 19, 2021

Contact Information

2

- Date of survey: 4-8/1/2021
- Survey method: Random telephone survey conducted by real interviewers
- Target population: Cantonese-speaking Hong Kong residents aged 18+
- Sample size: 1,000 (including 492 landline and 508 mobile samples)
- Effective response rate: 58.5%
- Sampling error: Sampling error of ratings not more than +/-0.28 at 95% conf. level
- Weighting method: Rim-weighted according to figures provided by the Census and Statistics Department. The gender-age distribution of the Hong Kong population came from “Mid-year population for 2019”, while the educational attainment (highest level attended) distribution and economic activity status distribution came from “Women and Men in Hong Kong - Key Statistics (2019 Edition)”.

Survey Topic

3

- Core Social Indicators
 - Degree of freedom
 - Degree of prosperity
 - Degree of stability
 - Compliance with the rule of law
 - Degree of democracy

Survey result - Core Social Indicators

4

● Five Core Social Indicators

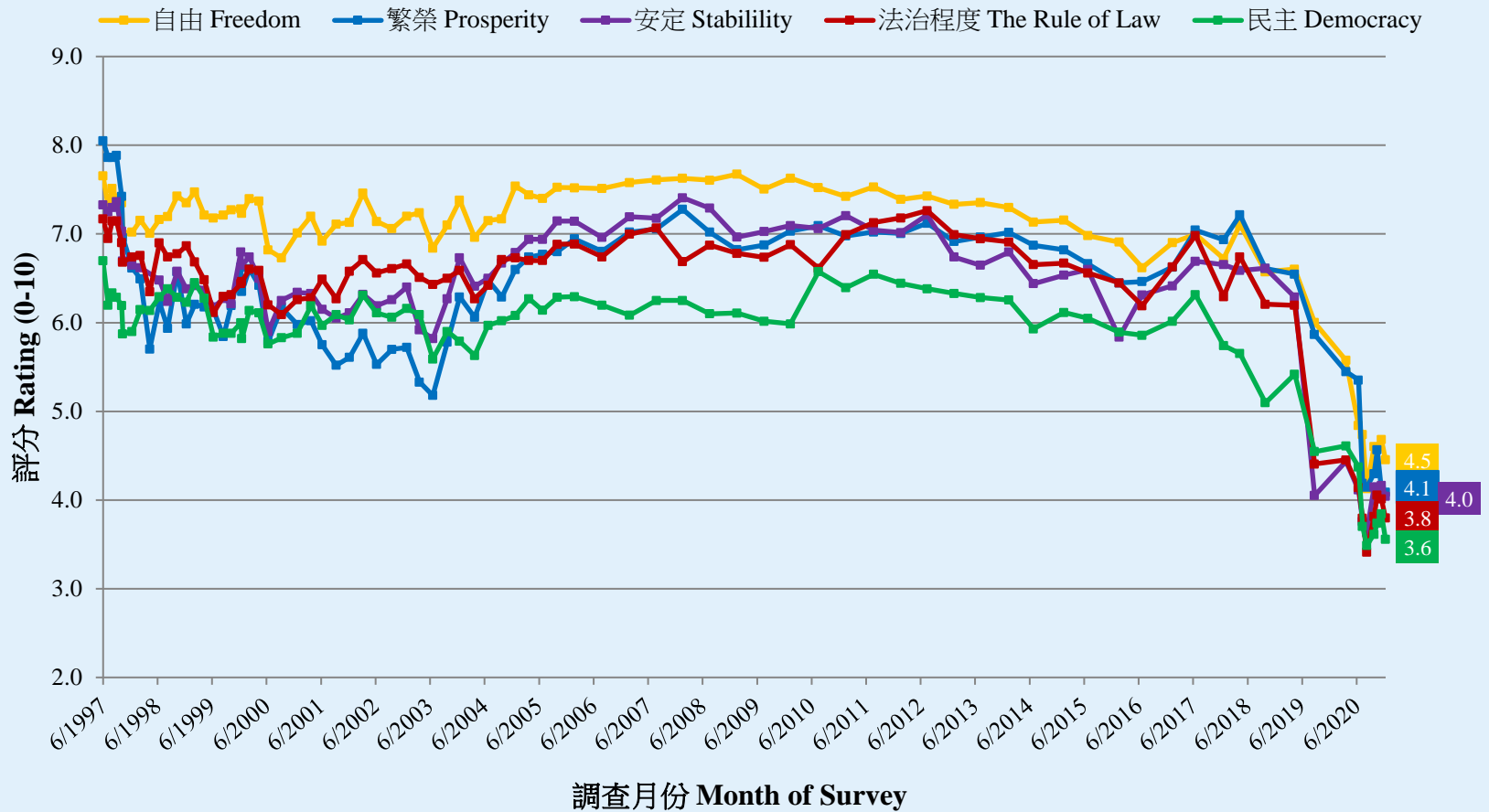
	7-10/12/2020	4-8/1/2021	Change	Record
Freedom	4.68	4.45	▼ 0.23	Record low since Aug. 2020
Prosperity	4.11	4.09	▼ 0.02	All-time record low since Jun. 1997
Stability	4.17	4.04	▼ 0.12	Record low since Aug. 2020
Rule of law	4.01	3.80	▼ 0.21	Record low since Aug. 2020
Democracy	3.85	3.56	▼ 0.29	Record low since Aug. 2020

- On a scale of 0 to 10, people's ratings on all five core social indicators continue to be lower than 5 marks. Ranked from the highest to the lowest are “freedom”, “prosperity”, “stability”, “rule of law” and “democracy”. Compared with a month ago, all social indicators have declined slightly, of which the rating of “prosperity” has again registered a new **low** since records began in 1997.

Survey result - Core Social Indicators

5

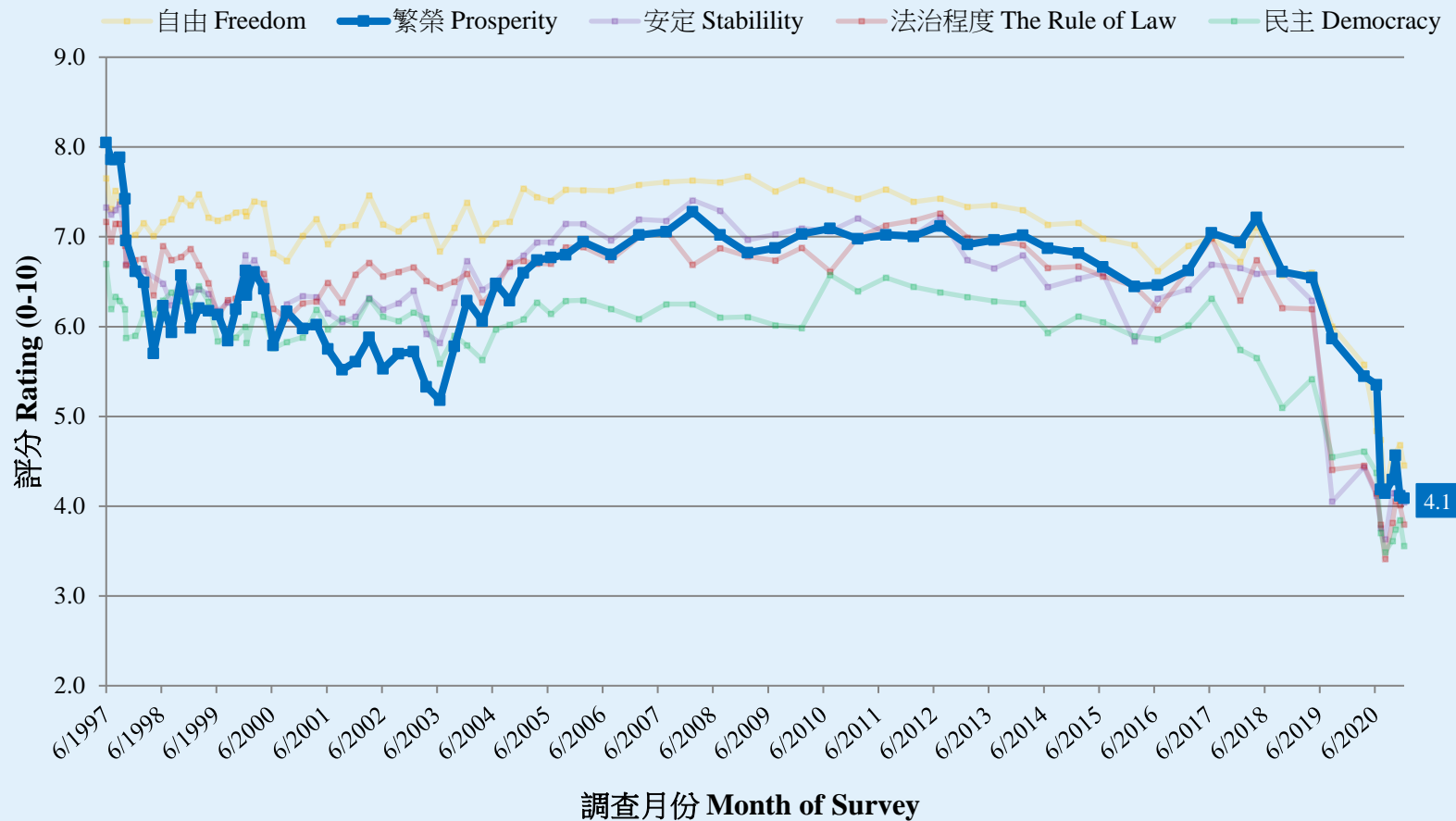
核心社會指標走勢圖表 (按次計算)
Trend of Core Social Indicators Chart (Per Poll)
(6/1997 – 1/2021)



Survey result - Core Social Indicators

6

核心社會指標走勢圖表 (按次計算)
Trend of Core Social Indicators Chart (Per Poll)
(6/1997 – 1/2021)



POP



HONG KONG PUBLIC OPINION PROGRAM

HONG KONG PUBLIC OPINION RESEARCH INSTITUTE

香港民意研究所 之 香港民意研究計劃

Community Democracy Project -

Community Health Module

Latest Results

January 19, 2021

Contact Information - Community Health Module

	HKPOP Panel	
Date of survey	January 8, 3pm – January 18, 3pm	
Survey method	Online survey	
Target population	Hong Kong residents aged 12+	
	Representative Panel	Volunteer Panel
Total sample size	481	4,757
Response rate	5.4%	5.4%
Sampling error	Sampling error of percentages at +/-4% at 95% confidence level	Sampling error of percentages at +/-1% at 95% confidence level
Weighting method	The figures are rim-weighted according to 1) gender-age distribution of Hong Kong population and by District Councils population figures from Census and Statistics Department; 2) Voting results of District Councils Election from Registration and Electoral Office; 3) rating distribution of Chief Executive from regular tracking surveys.	

Survey Result - Community Health Module

10

- Latest survey period: 8-18/12/2020
- Last survey period: 28-31/12/2020 (*Representative Panel N= 804 Volunteer Panel N= 8,709*)
- Second last survey period: 17-28/12/2020 (*Representative Panel N= 276 Volunteer Panel N= 6,512*)

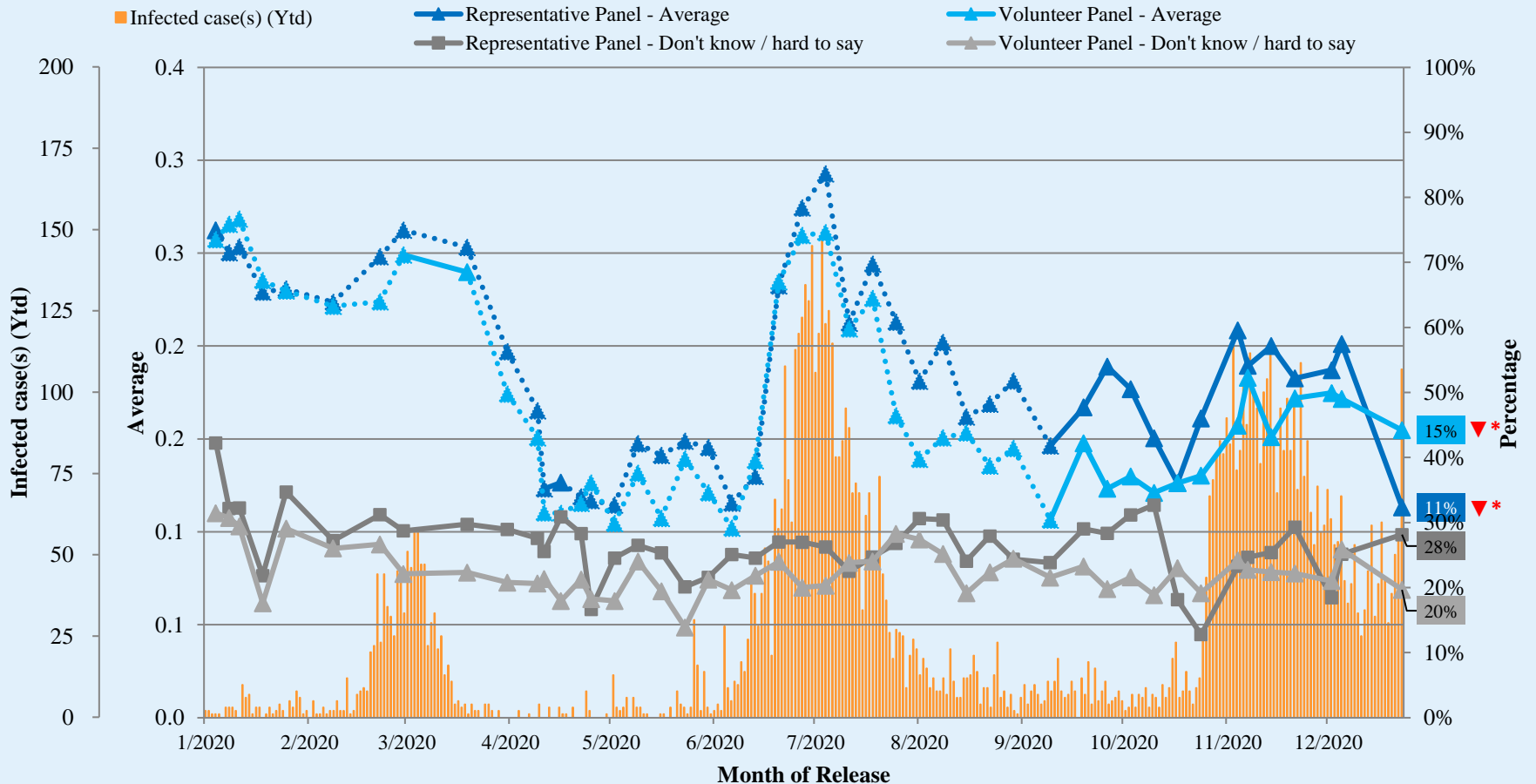
Opinion Question [^]		Representative Panel (N=481)		Volunteer Panel (N=4,746)	
		Don't know / hard to say	Average	Don't know / hard to say	Average
Q1 How likely do you think it is that you will contract novel coronavirus pneumonia over the next one month? [Logarithmic Scale]	Latest	28%	11% ▼*	20%	15% ▼*
	Last	25%	20%	26%	17%
	Second Last	18%	19%	21%	17%

[^] Answer options included: 0-10 rating scale, others and don't know / hard to say. Answer options changed from linear scale to logarithmic scale since Oct 2020.

* Significant change

Survey Result - Community Health Module

Assessment of the public's expected chance of COVID-19 infection



^ Answer options included: 0-10 rating scale, others and don't know / hard to say. Answer options changed from linear scale to logarithmic scale since Oct 2020.

* Significant change

Survey Result - Community Health Module

13

- **Latest survey period: 8-18/1/2021**
- **Last survey period: 28-31/12/2020** (*Representative Panel N= 803 Volunteer Panel N= 8,716*)
- **Second last survey period: 17-28/12/2020** (*Representative Panel N= 277 Volunteer Panel N= 6,524*)

Opinion Question [^]		Representative Panel (N=479)				Volunteer Panel (N=4,749)			
		Satisfied	Half-half	Dissatisfied	Mean [†]	Satisfied	Half-half	Dissatisfied	Mean [†]
Q2 How satisfied or dissatisfied are you with the government's performance in handling novel coronavirus pneumonia?	Latest	17%	28% ▲*	55% ▼*	2.2	18% ▲*	10% ▼*	72%	1.9
	Last	16%	20%	64%	2.1	16%	13%	71%	1.9
	Second Last	21%	12%	66%	2.1	14%	16%	69%	1.9

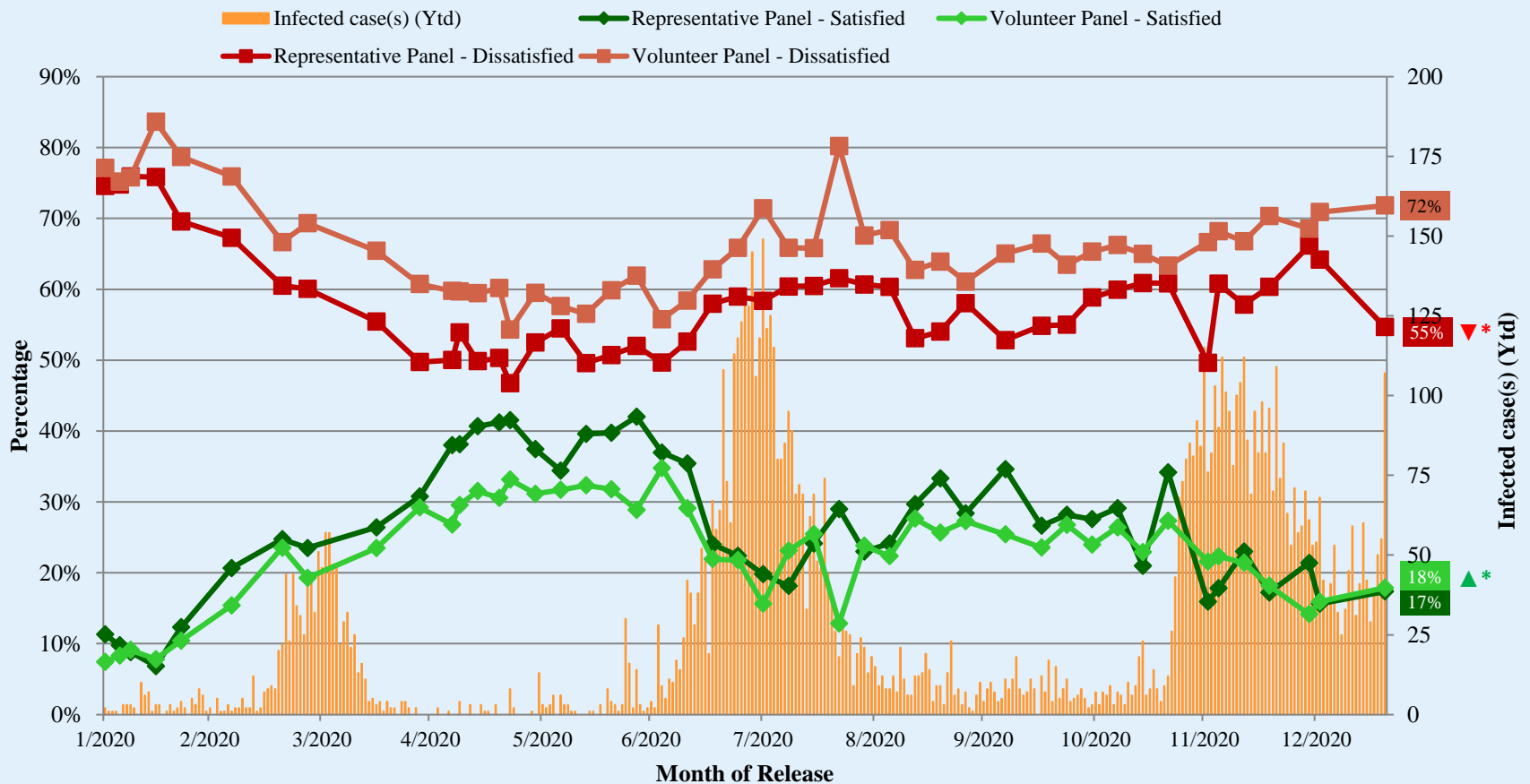
[^] Answer options included: very much satisfied, somewhat satisfied, half-half, somewhat dissatisfied, very much dissatisfied and don't know / hard to say

[†] The mean value is calculated by quantifying all individual responses into 1, 2, 3, 4, 5 marks according to their degree of positive level, where 1 is the lowest and 5 the highest, and then calculate the sample mean.

* Significant change

Survey Result - Community Health Module

Appraisal of HK Government's performance in handling novel coronavirus pneumonia



^ Answer options included: very much satisfied, somewhat satisfied, half-half, somewhat dissatisfied, very much dissatisfied and don't know / hard to say * Significant change

POP



HONG KONG PUBLIC OPINION PROGRAM

HONG KONG PUBLIC OPINION RESEARCH INSTITUTE

香港民意研究所 之 香港民意研究計劃

Community Democracy Project - Community Health Module

Post-Epidemic Normality Resumption Index (PENRI)

Latest Results

January 19, 2021

Contact Information - PENRI

16

	HKPOP Panel
Date of survey	January 8, 3pm – January 18, 3pm
Survey method	Online survey
Target population	Hong Kong residents aged 12+
Total sample size	4,757
Response rate	5.4%
Sampling error	Sampling error of percentages at +/-1% at 95% confidence level
Weighting method	The figures are rim-weighted according to 1) gender-age distribution of Hong Kong population and by District Councils population figures from Census and Statistics Department; 2) Voting results of District Councils Election from Registration and Electoral Office; 3) rating distribution of Chief Executive from regular tracking surveys.

Survey Result - PENRI

17

Date of Publication	<u>5/1</u>	<u>6/1</u>	<u>7/1</u>	<u>8/1</u>	<u>9/1</u>	<u>10/1</u>	<u>11/1</u>	<u>12/1</u>	<u>13/1</u>	<u>14/1</u>	<u>15/1</u>	<u>16/1</u>	<u>17/1</u>	<u>18/1</u>	<u>19/1</u>
Imported Cases(Ytd)	10	1	3	4	3	6	3	3	0	0	3	3	1	4	5
Local Infection Cases(Ytd)	43	31	22	29	42	53	28	38	60	42	26	35	49	51	102
Post-Epidemic Gathering Resumption Index (PEGRI)	15.2	18.8	18.8	18.8	18.8	18.8*	18.8*	18.8*	15.2*	18.8*	18.8*	18.8*	15.2*	15.2*	12.2

* Provisional figures based on 2020 last set of opinion data collected (on acceptable risk levels) matched to real life situation.

Survey Result - PENRI

18

