



HONG KONG PUBLIC OPINION RESEARCH INSTITUTE
香港民意研究所

Hong Kong Public Opinion Program of Hong Kong Public Opinion Research Institute

“Community Health Information System” Report No. 4

Data Period: March 4 to 19, 2020

Release Date: March 20, 2020

Copyright of this report was generated by the Hong Kong Public Opinion Program (HKPOP) and opened to the world. HKPOP proactively promotes open data, open technology and the free flow of ideas, knowledge and information. The predecessor of HKPOP was the Public Opinion Programme at The University of Hong Kong (HKUPOP). “HKPOP” or “POP” in this publication may refer to HKPOP or HKUPOP as the case may be.

Table of Contents

	Page
Survey Report	
Research Background	2
Data Coverage Periods	2
Contact Information	4
Explanation of Data Analysis	4
Survey Results	5
Part One Mask Reserve	5
Part Two Online Screen Captures of CHIS	11
Appendix 1 Supplementary Information on CHIS Interval Values	13
Appendix 2 Mask Reserve by Constituency	15
Appendix 3 Mask Usage by Constituency	32
Appendix 4 Number of Masks by Constituency	49

Research Background

In view of the outbreak of Novel Coronavirus (also known as "Wuhan Pneumonia") in late January 2020, the Hong Kong Public Opinion Program (HKPOP) under the Hong Kong Public Opinion Research Institute (HKPORI) kick-started the "Community Democracy Project: Community Health Module" or "Community Health Project" using a PopPanel survey design to study the public's views on the epidemic and the Government's relevant policies using small communities such as housing estates as the unit of analysis. The study covers people's views on their perceived chance of contracting pneumonia, appraisal on the government's handling of the disease, impacts of border closure, calls for strike by frontline medical staff, community outbreak, home-working conditions and their general use of face masks. The special feature of the Community Health Project is the lowering of respondents' age bracket to 12 years old, in order to obtain more comprehensive samples.

As the epidemic developed, on February 2, 2020, HKPOP engaged Professor P.C. Lai from the Department of Geography at The University of Hong Kong and Professor Paulina Wong from the Science Unit at Lingnan University to build the "**Community Health Information System**" (CHIS) to present survey data and relevant information using a geographic information systems (GIS) down to different community levels. Survey data, like peoples' possession of protective masks, their need for anti-epidemic commodities and so on, is processed using a 15-day rolling method to begin with, and presented alongside with other health and geographical information. HKPOP started to collect and collate CHIS survey data via its online survey platforms on February 2, 2020 and then displayed them on a GIS map accessible via its website at <http://www.pori.hk/> starting from February 18. While this map is updated almost every working day, HKPOP still compiles written CHIS Reports every now and then as snapshots of CHIS findings. As of this date, four CHIS Reports including this one have been compiled.

CHIS Reports No. 1, 2 and 3 were released on March 3, 6 and 13 respectively, and this CHIS Report No. 4 is the fourth release. It is worth noting that the contents of these reports only cover the results of certain CHIS survey questions within certain survey periods, while the dynamic data displayed in the CHIS map is updated very frequently. The purpose of these reports is mainly for archiving snapshots taken at specific time. HKPOP will continue to compile CHIS reports on an irregular basis. Starting from mid-March, the CHIS map has also included the information of more than 140 District Council constituencies covered by the "Community Democracy" Project of HKPOP.

Data Coverage Periods

While this CHIS map is updated almost every working day, four CHIS Reports including this one have been compiled as of this date. CHIS Report No. 1 took three snapshots of CHIS rolling data (spanning 15 continuous calendar days) and the data collection periods were February 2 to 17, February 5 to 20 and February 16 to March 2. In CHIS Report No. 2, one more set of rolling data covering February 19 to March 5 was added. The CHIS Report No. 3 covered the rolling data from February 26 to March 12, including two questions which were stopped on March 10. This CHIS Report No. 4 covers the rolling data of the last 15 days from March 4 to 19. For easy reference, Table 1 gives the data period of each question covered by CHIS up to this date, while Table 2 documents the upload time of our CHIS map up to this date, along with questions covered, their sample size in each update, as well as which CHIS print reports have carried the findings.

Table 1 Data coverage period for CHIS survey questions

Question	Wordings / Descriptions	Data coverage period	CHIS print report
Q1	How long can you rely on your current face mask reserve?	February 2, 1500 to March 19, 1500	#1, #2, #3, #4
Q2	How would you describe your usage of face mask? Please try to use past 7 days as your reference.	February 18, 1500 to March 19, 1500	#2, #3, #4
Q3	Which of the following anti-epidemic materials do you need most now?	February 4, 1500 to March 3, 1500	#1, #2
Q4	How long can you rely on your current ethyl alcohol reserve?	February 18, 1500 to March 10, 1500	#3
Q5	How long can you rely on your current hand sanitizer reserve?	February 18, 1500 to March 10, 1500	#3
Q1*Q2	Number of masks available for use (computed using results of Q1 and Q2, not directly collected from survey)	February 18, 1500 to March 19, 1500	#3, #4

Table 2 CHIS data release dates and data coverage periods

CHIS website update	Questions shown on CHIS	Data coverage period of questions (normally last 15 days)	Sample size	Presented in reports
February 18, 1300	Q1	February 2, 1500 to February 17, 1500	21,337	#1, #2
February 20, 0900	Q1, Q3	February 4, 1500 to February 19, 1500	22,959	
February 21, 0900	Q1, Q3	February 5, 1500 to February 20, 1500	20,495	#1, #2
February 22, 0900	Q1, Q3	February 6, 1500 to February 21, 1500	21,592	
February 25, 0900	Q1, Q3	February 9, 1500 to February 24, 1500	21,912	
February 26, 0900	Q1, Q3	February 10, 1500 to February 25, 1500	21,992	
February 27, 0900	Q1, Q3	February 11, 1500 to February 26, 1500	22,880	
February 28, 0900	Q1, Q3	February 12, 1500 to February 27, 1500	21,900	
February 29, 0900	Q1, Q3	February 13, 1500 to February 28, 1500	19,417	
March 3, 0900	Q1, Q3	February 16, 1500 to March 2, 1500	17,547	#1, #2
March 4, 0900	Q1, Q3	February 17, 1500 to March 3, 1500	17,468	
March 5, 0900	Q1, Q2, Q4, Q5	February 18, 1500 to March 4, 1500	18,957	
March 5, 2300	Q1, Q2, Q4, Q5	February 19, 1500 to March 5, 1500	17,609	#2
March 6, 2300	Q1, Q2, Q4, Q5	February 20, 1500 to March 6, 1500	17,481	
March 9, 2300	Q1, Q2, Q4, Q5	February 23, 1500 to March 9, 1500	15,174	
March 10, 2300	Q1, Q2	February 24, 1500 to March 10, 1500	15,083	
	Q4, Q5	February 24, 1500 to March 10, 1500	15,083	#3
March 11, 2300	Q1, Q2	February 25, 1500 to March 11, 1500	16,544	
	Q4, Q5	February 25, 1500 to March 10, 1500	12,267	
March 12, 2300	Q1, Q2	February 26, 1500 to March 12, 1500	15,685	#3
	Q4, Q5	February 26, 1500 to March 10, 1500	11,848	
March 13, 2300	Q1, Q2	February 27, 1500 to March 13, 1500	15,790	
	Q4, Q5	February 27, 1500 to March 10, 1500	11,795	
March 16, 2300	Q1, Q1*Q2	February 28, 1500 to March 16, 1500	15,899	
March 18, 2300	Q1, Q1*Q2	March 3, 1500 to March 18, 1500	17,299	
March 19, 2300	Q1, Q1*Q2	March 4, 1500 to March 19, 1500	15,758	#4

Contact Information

Table 3 Contact information:

Survey method	Online Survey
Target population	HKPOP Panel samples, namely Hong Kong People Representative Panel (Probability-based Panel) and Hong Kong People Volunteer Panel (Non-probability-based Panel)
Data period	March 4, 1500 to March 19, 1500 (past 15 days)
Total sample size	15,758

Explanation of Data Analysis

The CHIS data is processed and presented in the following manner:

1. The samples from "Hong Kong People Representative Panel" and "Hong Kong People Volunteer Panel" who responded to the question of "mask reserve" is first screened for the past 15 days;
2. Unlike other opinion questions, the data of the CHIS comes from all samples of the Hong Kong People Representative Panel and Hong Kong People Volunteer Panel within a certain survey period, and not adjusted by any weighting.
3. The question on "mask reserve" is processed as follows:
 - a. Calculate and pair up the mean values of "reserve" for individual constituency areas, then divide all values into 6 groups according to the natural breaks classification method of geographic information systems (GIS) designed for easy appreciation by the general public, with specific separation values and representations by different colors in the map, to reflect the relative scarcity and abundance of mask reserve in that area. The colors used for the six intervals are as follows:
 - First interval: red
 - Second interval: orange
 - Third interval: yellow
 - Fourth interval: green
 - Fifth interval: turquoise
 - Sixth interval: blue
 - b. If the valid sample from a certain constituency area is less than 30, the information is treated as "missing" and no colour pairing will be made or displayed.
4. For detailed interval values, please refer to Appendix 1.

Survey Results

Part One Mask Reserve

The CHIS has been tracking people's **mask reserve** ever since it was launched. As of 3pm of March 19, overall speaking, Hong Kong people's average mask reserve stands at 58.5 days (Table 4). Among 18 districts, Islands District has the smallest reserve (55.8 days) and Wan Chai District has the biggest reserve (62.2 days; Table 5).

In terms of 452 constituency areas, excluding those with valid samples of less than 30, the bottom five constituencies with the smallest amount of mask reserves, in a relative sense, are San Hui in Tuen Mun (42.8 days), Chui Ka in Sha Tin (45.5 days), Lai Chi Kok North in Sham Shui Po (46.4 days), Lower Ngau Tau Kok Estate in Kwun Tong (47.2 days) and Lok Hong in Eastern District (48.3 days), while the top five constituencies with the biggest amount of mask reserves, in a relative sense, are Kornhill in Eastern District (71.3 days), Hing Tung in Eastern District (69.6 days), Hin Ka in Sha Tin (69.5 days), Mid Levels East in Central & Western (69.0 days) and Keng Hau in Sha Tin (68.6 days). Please refer to Appendix 2 for details.

Table 4 "How long can you rely on your current face mask reserve?" – overall results:

	<u>4-19/3/20</u>	
	Frequency	Percentage (Base=15,747)
No reserve at all / already no mask	36	0.2%
1 – 2 day(s)	37	0.2%
3 – 4 days	56	0.4%
5 – 6 days	47	0.3%
1 week	173	1.1%
2 weeks	611	3.9%
3 weeks	760	4.8%
1 month	3,050	19.4%
1.5 months	2,412	15.3%
2 months	4,318	27.4%
3 months	2,274	14.4%
Over 3 months	1,873	11.9%
Don't know / hard to say	100	0.6%
Total	15,747	100.0%
Mean (days)*	58.5 days	
Standard error of the mean	0.25	
Median	60.0	
<i>Refuse to answer</i>	<i>11</i>	

* Numeric conversion as follows: "No reserve at all / already no mask=0.0 days; 1–2 days=1.5 days; 3–4 days=3.5 days; 5–6 days=5.5 days; 1 week=7.0 days; 2 weeks=14.0 days; 3 weeks=21.0 days; 1 month=30.0 days; 1.5 months=45 days; 2 months=60 days; 3 months=90 days, over 3 months=120 days; don't know/hard to say are excluded."

Table 5 "How long can you rely on your current face mask reserve?" – result by District Council

Rank	District Council	Number of respondents	Valid samples #	Mean (days) *
1	Islands	289	286	55.8
2	Kwai Tsing	926	920	56.2
3	Tai Po	777	770	56.3
4	North	517	511	56.5
5	Kowloon City	874	868	56.8
6	Wong Tai Sin	843	838	57.1
7	Kwun Tong	1,156	1,144	57.4
8	Tuen Mun	1,017	1,008	57.6
9	Yau Tsim Mong	561	557	58.0
10	Sham Shui Po	784	780	58.3
11	Sha Tin	1,761	1,750	58.8
11	Southern	579	577	58.8
13	Yuen Long	1,175	1,167	59.2
14	Tsuen Wan	820	813	59.6
15	Central and Western	560	554	60.0
16	Sai Kung	1,289	1,283	60.5
17	Eastern	1,468	1,463	60.6
18	Wan Chai	362	358	62.2

Excludes cases of "don't know / hard to say" and "refuse to answer"

* Numeric conversion as follows: "No reserve at all / already no mask=0.0 days; 1-2 days=1.5 days; 3-4 days=3.5 days; 5-6 days=5.5 days; 1 week=7.0 days; 2 weeks=14.0 days; 3 weeks=21.0 days; 1 month=30.0 days; 1.5 months=45 days; 2 months=60 days; 3 months=90 days, over 3 months=120 days; don't know/hard to say are excluded."

Closely related to mask reserve, the CHIS has also been tracking people's mask usage. As of 3pm of March 19, overall speaking, Hong Kong people's average mask usage stands at 0.96 mask per day (Table 6). Among 18 districts, Islands District has the lowest usage rate (0.87 per day) and Kwai Tsing District has the highest usage rate (1.00 per day; Table 7).

In terms of 452 constituency areas, excluding those with valid samples of less than 30, the bottom five constituencies with the lowest mask usage rate, in a relative sense, are Discovery Bay in Islands (0.71 per day), Happy Valley in Wan Chai (0.71 per day), Do Shin in Sai Kung (0.74 per day), Pokfulam in Southern District (0.75 per day) and Stanley & Shek O in Southern District (0.75 per day), while the top five constituencies with the higher mask usage rate, in a relative sense, are Cheung Hong in Kwai Tsing (1.33 per day), Cheung Ching in Kwai Tsing (1.28 per day), Tai Wo in Tai Po (1.26 per day), Sheung Tak in Sai Kung (1.22 per day) and Shan King in Tuen Mun (1.22 per day). Please refer to Appendix 3 for details.

Table 6 "How would you describe your usage of face mask? Please try to use past 7 days as your reference." – overall result:

	<u>4-19/3/20</u>	
	Frequency	Percentage (Base=15,739)
I do not use mask at all / already no mask to use	85	0.5%
1 mask for more than 3 days	793	5.0%
1 mask for 3 days	1,235	7.8%
1 mask for 2 days	2,720	17.3%
1 mask per day	9,066	57.6%
2 masks per day	1,458	9.3%
3 masks per day	188	1.2%
4 masks per day	61	0.4%
More than 4 masks per day	41	0.3%
Don't know / hard to say	92	0.6%
Total	15,739	100.0%
Mean*	0.96 per day	
Standard error of the mean	<0.01	
Median	1.00	
<i>Refuse to answer</i>	19	

* Numeric conversion as follows: "I do not use mask at all / already no mask to use=0 masks/day; 1 per more than 3 days=1/4 masks/day; 1 per 3 days=1/3 masks/day; 1 per 2 days=1/2 masks/day; 1 per day=1 masks/day; 2 per day=2 masks/day; 3 per day=3 masks/day; 4 per day=4 masks/day; more than 4 per day=5 masks/day."

Table 7 "How would you describe your usage of face mask? Please try to use past 7 days as your reference." – result by District Council

Rank	District Council	Number of respondents	Valid samples #	Mean (mask/day) *
1	Islands	289	286	0.87
2	Southern	579	575	0.90
3	Wan Chai	362	359	0.91
4	Yau Tsim Mong	561	558	0.93
5	Kwun Tong	1,156	1,145	0.94
5	Kowloon City	874	869	0.94
5	Sai Kung	1,289	1,280	0.94
5	Eastern	1,468	1,457	0.94
9	Central and Western	560	555	0.95
10	Sham Shui Po	784	778	0.96
10	Sha Tin	1,761	1,747	0.96
12	Tai Po	777	771	0.97
12	North	517	514	0.97
12	Tsuen Wan	820	815	0.97
15	Yuen Long	1,175	1,168	0.98
15	Wong Tai Sin	843	835	0.98
17	Tuen Mun	1,017	1,011	0.99
18	Kwai Tsing	926	924	1.00

Excludes cases of "refuse to answer"

* Numeric conversion as follows: "I do not use mask at all / already no mask to use=0 masks/day; 1 per more than 3 days=1/4 masks/day; 1 per 3 days=1/3 masks/day; 1 per 2 days=1/2 masks/day; 1 per day=1 masks/day; 2 per day=2 masks/day; 3 per day=3 masks/day; 4 per day=4 masks/day; more than 4 per day=5 masks/day."

If we link up the number of days of people's mask reserve with their mask usage, we can then compute the "number of masks available for use". As of 3pm of March 19, Hong Kong people on average have 57.3 masks available for use in general (Table 8), with Islands District having the least (49.8 pieces) and Tsuen Wan District having the most (59.9 pieces) among 18 districts (Table 9).

In terms of 452 constituency areas, excluding those with valid samples of less than 30, the bottom five constituencies with the least masks available for use, in a relative sense, are Prince in Kowloon City (37.8 pieces), San Hui in Tuen Mun (38.8 pieces), Happy Valley in Wan Chai (40.2 pieces), Sai Kung Islands in Sai Kung (41.1 pieces) and Chui Ka in Sha Tin (41.2 pieces), while the top five constituencies with the most masks available for use, in a relative sense, are Quarry Bay in Eastern District (82.0 pieces), Sheung Tak in Sai Kung (79.6 pieces), Wo Che Estate in Sha Tin (77.8 pieces), Cheung Hong in Kwai Tsing (77.7 pieces) and Sai Wan in Central & Western District (76.0 pieces). Please refer to Appendix 4 for details.

Table 8 "Number of masks available for use" – overall result

	4-19/3/20	
	Frequency	Percentage (Base=15,730)
0-14	1,746	11.1%
15-29	2,145	13.6%
30-44	3,022	19.2%
45-59	1,816	11.5%
60-89	3,049	19.4%
90-119	1,563	9.9%
120 or more	2,211	14.1%
Don't know / Hard to say	178	1.1%
Total	15,730	100.0%
Mean (pieces)	57.3	
Standard error of the mean	0.42	
Median	45.0	
<i>Refuse to answer</i>	28	

Table 9 "Number of masks available for use" – result by District Council

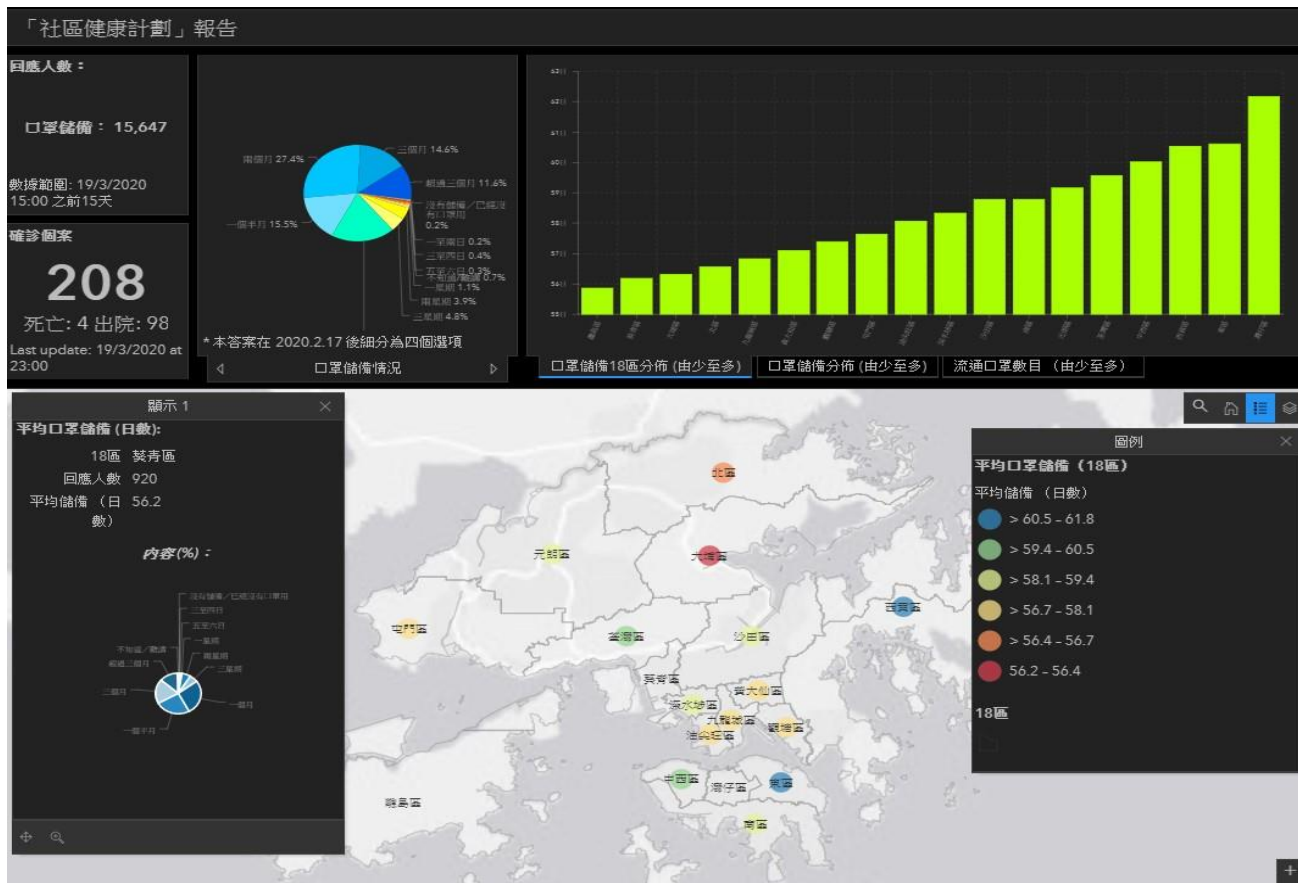
Rank	District Council	Number of respondents	Valid samples #	Mean (mask)
1	Islands	289	284	49.8
2	Southern	579	574	54.5
3	Kwun Tong	1,156	1,136	55.0
4	Kowloon City	874	863	55.1
5	Tai Po	777	765	55.3
6	North	517	508	55.9
7	Yau Tsim Mong	561	554	56.1
8	Kwai Tsing	926	919	56.7
9	Wong Tai Sin	843	833	57.5
10	Wan Chai	362	356	57.6
11	Sha Tin	1,761	1,737	57.7
12	Sai Kung	1,289	1,274	58.0
13	Sham Shui Po	784	774	58.2
14	Tuen Mun	1,017	1,002	58.3
15	Yuen Long	1,175	1,160	59.1
16	Eastern	1,468	1,454	59.2
17	Central and Western	560	550	59.3
18	Tsuen Wan	820	809	59.9

Excludes cases of "refuse to answer"

Part Two Online Screen Captures of CHIS

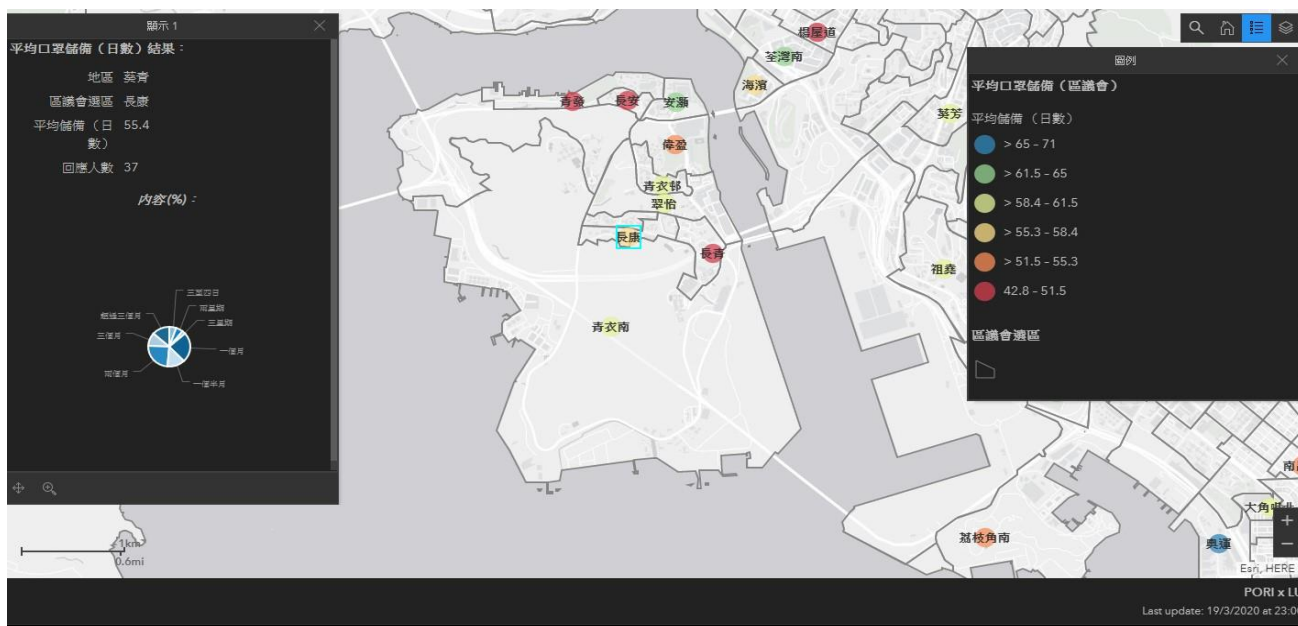
Below are some online screen captures of the CHIS map for illustration purpose:

Screen Capture 1 Mask Reserve (18 districts, using Kwai Tsing as an example; data as of March 19, 1500)



The CHIS map is temporally available in Chinese only, the English version is under construction.

Screen Capture 2 Mask Reserve (zoom in specific district, using Cheung Hong, Kwai Tsing as an example; data as of March 19, 1500)



The CHIS map is temporally available in Chinese only, the English version is under construction.

Appendices

Appendix 1

Supplementary Information on CHIS Interval Values

Appendix 1: Supplementary information on CHIS interval values

Using the data as of March 19, 2020 at 1500, the Community Health Information System has generated the following interval values:

Mask reserve – by District Council:

Interval	Color	Value
First	Red	56.2 - 56.4
Second	Orange	>56.4 - 56.7
Third	Yellow	>56.7 - 58.1
Fourth	Green	>58.1 - 59.4
Fifth	Turquoise	>59.4 - 60.5
Sixth	Blue	>60.5 - 61.8

Mask reserve – by Constituency:

Interval	Color	Value
First	Red	42.8 - 51.5
Second	Orange	>51.5 - 55.3
Third	Yellow	>55.3 - 58.4
Fourth	Green	>58.4 - 61.5
Fifth	Turquoise	>61.5 - 65.0
Sixth	Blue	>65.0 - 71.0

Appendix 2

Mask Reserve by Constituency

Appendix 2: CHIS result of each constituency -

"How long can you rely on your current **face mask** reserve?" (Past 15 days data)

Rank	Constituency	Sample size	Valid sample size#	Average (days)*
1	Tuen Mun - San Hui	33	33	42.8
2	Sha Tin - Chui Ka	35	35	45.5
3	Sham Shui Po - Lai Chi Kok North	30	30	46.4
4	Kwun Tong - Lower Ngau Tau Kok Estate	36	34	47.2
5	Eastern - Lok Hong	40	40	48.3
6	Wong Tai Sin - Tsui Chuk & Pang Ching	33	33	48.9
7	Sha Tin - Lower Shing Mun	32	31	49.0
8	Sha Tin - Chung Tin	36	36	49.3
9	Kowloon City - Kadoorie	58	58	49.4
10	Tai Po - Old Market & Serenity	46	46	49.5
11	North - Queen's Hill	31	31	49.7
12	Wong Tai Sin - Lung Sheung	34	34	49.8
12	Tsuen Wan - Yeung Uk Road	32	32	49.8
14	Sha Tin - Tai Shui Hang	40	39	49.9
15	Islands - Cheung Chau	36	36	50.0
16	Wong Tai Sin - Lok Fu	37	37	50.4
17	Eastern - Yan Lam	50	50	50.9
17	Sha Tin - Chung On	49	47	50.9
19	Kwai Tsing - Cheung On	33	33	51.0
20	Kwai Tsing - Cheung Ching	30	30	51.1
21	Kwun Tong - Yuet Wah	34	34	51.3
22	Kwai Tsing - Ching Fat	36	35	51.5
22	North - Tin Ping East	33	32	51.5
22	Yuen Long - Fairview Park	72	71	51.5
25	Wan Chai - Oi Kwan	33	32	51.9
26	Kowloon City - Hung Hom Bay	34	34	52.0
27	Kwai Tsing - Lai Wah	40	40	52.1
27	North - Yan Shing	36	35	52.1
29	Tai Po - Tai Wo	39	39	52.2
30	Sham Shui Po - Nam Cheong South	30	30	52.4
30	Sham Shui Po - Cheung Sha Wan	47	46	52.4
32	Kwun Tong - Ping Tin	32	32	52.6
32	Kowloon City - Prince	42	42	52.6
34	Tai Po - Shuen Wan	58	58	52.7
35	Kowloon City - Ma Tau Wai	45	45	52.8

Rank	Constituency	Sample size	Valid sample size#	Average (days)*
36	Sai Kung - Sai Kung Islands	32	32	52.9
36	Sha Tin - Heng On	33	33	52.9
38	Sham Shui Po - Lai Chi Kok South	30	30	53.1
39	Tuen Mun - Fu Sun	41	40	53.3
40	Sai Kung - Tak Ming	31	31	53.4
40	Wong Tai Sin - Tin Keung	44	44	53.4
42	Tuen Mun - Tuen Mun Rural	37	37	53.5
43	Tai Po - Lam Tsuen Valley	57	56	53.7
44	Tsuen Wan - Discovery Park	58	57	53.8
45	Yau Tsim Mong - Mong Kok East	41	41	53.9
46	Kwun Tong - Lam Tin	57	56	54.1
47	Kowloon City - Ma Hang Chung	45	45	54.2
47	Kowloon City - Sung Wong Toi	33	32	54.2
49	Kowloon City - Kowloon Tong	42	42	54.3
50	Eastern - Fullview	37	37	54.4
51	Kwai Tsing - Wai Ying	48	48	54.5
52	Tai Po - Yee Fu	39	39	54.7
52	Kwun Tong - Hiu Lai	54	54	54.7
54	Sha Tin - On Tai	34	34	54.8
55	Tai Po - Chung Ting	38	37	55.0
55	Kowloon City - Whampoa East	47	47	55.0
57	Kowloon City - Hoi Sham	32	31	55.1
57	Kwun Tong - Pak Nga	30	30	55.1
59	Southern - Wah Kwai	33	33	55.2
60	Yau Tsim Mong - Charming	47	47	55.3
60	Yau Tsim Mong - Fu Pak	43	43	55.3
60	Yuen Long - Pat Heung South	43	43	55.3
63	Kwai Tsing - Cheung Hong	37	37	55.4
64	Tai Po - Fu Ming Sun	36	36	55.7
64	Tuen Mun - Fu Tai	34	34	55.7
64	Tuen Mun - Lok Tsui	43	43	55.7
67	North - Fanling South	54	53	55.8
67	Tai Po - San Fu	57	54	55.8
69	Southern - Tin Wan	33	33	55.9
69	Yuen Long - Kam Tin	45	44	55.9
71	Tai Po - Po Nga	52	52	56.0
72	Sha Tin - Wong Uk	54	54	56.1
73	Central & Western - Sai Wan	31	30	56.2
74	Tuen Mun - Tuen Mun Town Centre	50	50	56.3
75	Wong Tai Sin - San Po Kong	41	41	56.4

Rank	Constituency	Sample size	Valid sample size#	Average (days)*
75	Sha Tin - Tai Wai	55	55	56.4
77	Sai Kung - Fu Kwan	39	39	56.5
77	Tai Po - Wang Fuk	38	38	56.5
77	Tsuen Wan - Allway	45	45	56.5
80	Kwun Tong - Kowloon Bay	45	45	56.6
81	Sha Tin - Chui Tin	36	36	56.7
81	Sai Kung - Wan Po South	49	49	56.7
83	Tai Po - Hong Lok Yuen	47	46	56.8
84	Tuen Mun - Shan King	33	33	56.9
84	Wong Tai Sin - King Fu	61	61	56.9
86	Central & Western - Belcher	52	50	57.0
86	Sai Kung - Fu Nam	57	56	57.0
86	Tuen Mun - Tsui Hing	58	58	57.0
86	Central & Western - Tung Wah	37	37	57.0
90	Tsuen Wan - Luk Yeung	68	68	57.1
90	Kwun Tong - Laguna City	85	85	57.1
92	Tuen Mun - San King	31	30	57.2
93	Southern - Aberdeen	63	63	57.3
94	Southern - South Horizons West	53	53	57.4
94	Kwai Tsing - Wah Lai	46	46	57.4
94	Central & Western - Sai Ying Pun	46	46	57.4
94	Wong Tai Sin - Fung Wong	37	37	57.4
98	Sai Kung - Hong King	33	33	57.5
98	Islands - Tung Chung Central	34	33	57.5
98	Sha Tin - Sha Tin Town Centre	68	68	57.5
101	Southern - Stanley & Shek O	36	36	57.6
101	Kowloon City - Ka Wai	43	43	57.6
101	Kwun Tong - Lai Ching	56	55	57.6
101	Eastern - City Garden	39	39	57.6
105	Sha Tin - Hoi Nam	42	42	57.7
105	Sha Tin - Pok Hong	32	32	57.7
107	Central & Western - Sheung Wan	33	32	57.8
108	Central & Western - Centre Street	33	33	57.9
109	Sai Kung - Po Lam	40	40	58.0
109	Sai Kung - Wan Hang	57	57	58.0
109	Sha Tin - Lee On	51	51	58.0
112	Sham Shui Po - Lai Chi Kok Central	59	59	58.2
113	Sham Shui Po - Yau Yat Tsuen	46	46	58.3
113	Wong Tai Sin - Lung Ha	37	37	58.3
113	Central & Western - University	57	56	58.3

Rank	Constituency	Sample size	Valid sample size#	Average (days)*
113	Islands - Tung Chung North	30	30	58.3
113	Eastern - Braemar Hill	59	59	58.3
118	Tsuen Wan - Hoi Bun	76	76	58.4
119	Tuen Mun - Hanford	56	56	58.7
119	Yuen Long - Shui Pin	52	52	58.7
119	Kwai Tsing - Greenfield	73	71	58.7
122	Yuen Long - Ping Shan South	50	50	58.8
122	Kwai Tsing - Cho Yiu	42	42	58.8
122	Yau Tsim Mong - East Tsim Sha Tsui & King's Park	34	34	58.8
122	Eastern - A Kung Ngam	35	35	58.8
126	Sha Tin - Fo Tan	53	53	59.0
126	Sha Tin - Kam Ying	45	44	59.0
128	Sai Kung - Wai Yan	46	46	59.1
129	Eastern - Tsui Tak	35	35	59.2
129	Eastern - Kam Ping	42	42	59.2
129	Kowloon City - Whampoa West	66	64	59.2
132	Eastern - Tai Koo Shing West	65	65	59.3
133	Yau Tsim Mong - Tai Nan	30	30	59.4
133	Yau Tsim Mong - Tai Kok Tsui North	47	46	59.4
133	Sai Kung - Yan Ying	56	55	59.4
136	Wong Tai Sin - Lung Sing	77	76	59.5
137	Yau Tsim Mong - Yau Ma Tei South	33	33	59.6
138	Sha Tin - Wo Che Estate	32	31	59.7
138	Eastern - Heng Fa Chuen	95	95	59.7
138	Central & Western - Shek Tong Tsui	36	36	59.7
141	Southern - Wong Chuk Hang	32	32	59.8
141	Sha Tin - Ma On Shan Town Centre	83	82	59.8
141	Sha Tin - Bik Woo	44	44	59.8
141	Eastern - Nam Fung	60	60	59.8
145	Yuen Long - Tin Shing	30	30	59.9
146	Tuen Mun - Siu Chi	65	63	60.0
147	North - Shek Wu Hui	30	30	60.1
148	Sha Tin - Chun Fung	34	33	60.2
148	Kwai Tsing - Kwai Fong	32	32	60.2
150	Wong Tai Sin - Chi Choi	58	58	60.3
151	Central & Western - Kwun Lung	57	57	60.4
151	Sha Tin - Yue Shing	64	64	60.4
151	Tai Po - Tai Po Central	41	41	60.4
154	Sai Kung - Wai King	83	81	60.5

Rank	Constituency	Sample size	Valid sample size#	Average (days)*
154	Sai Kung - Hang Hau East	44	44	60.5
156	Sai Kung - Hang Hau West	43	43	60.6
156	Kwai Tsing - Tsing Yi Estate	52	52	60.6
158	Tuen Mun - Siu Hei	40	40	60.7
158	Eastern - Tai Koo Shing East	75	75	60.7
160	Wong Tai Sin - Fung Tak	33	32	60.8
161	Kwai Tsing - Tsing Yi South	41	41	60.9
161	Sha Tin - Di Yee	48	48	60.9
163	Islands - Tung Chung South	58	56	61.0
163	Sha Tin - Kam To	50	50	61.0
165	Sha Tin - Yiu On	37	37	61.1
166	Sai Kung - Do Shin	40	40	61.2
166	Tai Po - Sai Kung North	48	48	61.2
168	Kowloon City - Oi Man	32	31	61.3
168	Eastern - Shau Kei Wan	57	57	61.3
168	Tai Po - Tai Po Kau	51	51	61.3
171	Wan Chai - Happy Valley	41	40	61.4
172	Kowloon City - Ho Man Tin	80	80	61.5
172	Sai Kung - Sheung Tak	36	36	61.5
172	Sai Kung - Wan Po North	69	69	61.5
175	Yuen Long - Shap Pat Heung Central	45	45	61.6
175	Sha Tin - Wan Shing	38	37	61.6
177	Sha Tin - Wu Kai Sha	82	82	61.7
178	Tuen Mun - Siu Tsui	57	56	61.8
178	Sha Tin - Fu Lung	41	41	61.8
180	Sha Tin - Chun Ma	53	53	61.9
180	Central & Western - Water Street	44	44	61.9
182	Southern - Chi Fu	73	72	62.0
182	Tuen Mun - Prime View	67	67	62.0
184	Kwun Tong - To Tai	73	72	62.1
185	Southern - South Horizons East	42	42	62.2
185	Tsuen Wan - Tsuen Wan South	56	56	62.2
187	Sai Kung - Hau Tak	35	35	62.3
187	Wong Tai Sin - Lung Tsui	31	31	62.3
187	Sai Kung - Choi Kin	31	31	62.3
190	Tsuen Wan - Tsuen Wan Centre	34	34	62.4
190	Tsuen Wan - Lai To	51	51	62.4
190	Wong Tai Sin - Ching Oi	39	39	62.4
193	Eastern - Kornhill Garden	38	38	62.5
194	Yuen Long - Yuen Lung	53	52	62.6

Rank	Constituency	Sample size	Valid sample size#	Average (days)*
194	Eastern - Provident	51	50	62.6
194	Sai Kung - Kwong Ming	43	42	62.6
197	Kowloon City - Oi Chun	43	42	62.8
198	Kwai Tsing - On Ho	58	58	62.9
199	Yuen Long - Shap Pat Heung West	34	34	63.0
199	Sham Shui Po - Mei Foo Central	50	50	63.0
199	Tsuen Wan - Tsuen Wan West	69	68	63.0
202	Eastern - Sai Wan Ho	55	54	63.1
203	Sha Tin - Yu Yan	66	66	63.2
203	Sham Shui Po - Po Lai	32	32	63.2
205	Wong Tai Sin - Tung Tau	36	36	63.3
206	Eastern - Lei King Wan	56	56	63.4
207	Tsuen Wan - Ting Sham	59	58	63.5
208	Central & Western - Kennedy Town & Mount Davis	32	32	63.6
209	Sai Kung - Kwan Po	63	63	63.7
209	Sham Shui Po - Mei Foo South	70	69	63.7
209	Southern - Ap Lei Chau North	48	48	63.7
212	Southern - Pokfulam	34	34	63.8
213	Sai Kung - Hoi Chun	53	53	63.9
214	Islands - Discovery Bay	42	42	64.0
215	Eastern - Quarry Bay	41	41	64.1
215	Eastern - Aldrich Bay	32	32	64.1
217	Yuen Long - Fung Cheung	58	58	64.2
218	Tuen Mun - Siu Hong	46	46	64.3
218	Yuen Long - Kingswood North	61	61	64.3
220	Tuen Mun - Kin Sang	32	31	64.4
221	Kwun Tong - Hong Lok	34	33	64.5
222	Sha Tin - City One	82	81	64.6
223	Eastern - Tanner	41	41	64.7
223	Sai Kung - Nam On	59	59	64.7
225	North - Luen Wo Hui	40	40	64.9
225	Kwun Tong - King Tin	67	66	64.9
227	Kwun Tong - Sheung Shun	31	31	65.0
228	Sai Kung - Tsui Lam	30	30	65.5
228	Eastern - Fort Street	47	47	65.5
228	Sham Shui Po - Mei Foo North	66	66	65.5
231	Central & Western - Castle Road	30	30	65.7
231	Tsuen Wan - Tsuen Wan Rural	70	69	65.7
233	Sai Kung - Po Yee	40	40	65.9

Rank	Constituency	Sample size	Valid sample size#	Average (days)*
234	Sai Kung - Pak Sha Wan	36	35	66.1
235	Wan Chai - Victoria Park	32	32	66.2
236	Yau Tsim Mong - Olympic	45	45	66.3
236	Tsuen Wan - Ma Wan	55	54	66.3
238	Sai Kung - O Tong	69	69	66.4
239	Sha Tin - Sui Wo	62	62	66.5
240	Yuen Long - Kingswood South	51	51	66.6
241	Tai Po - Fu Heng	30	30	66.7
242	Wan Chai - Causeway Bay	45	45	66.8
243	Wan Chai - Tin Hau	30	30	67.0
244	Eastern - Fortress Hill	61	61	67.1
245	North - Wah Do	32	31	67.2
246	Sham Shui Po - Lei Cheng Uk	31	31	67.4
247	Kowloon City - Hok Yuen Laguna Verde	36	36	67.6
248	Yuen Long - Yuen Long Tung Tau	39	38	67.7
249	Sha Tin - Keng Hau	34	34	68.6
250	Central & Western - Mid Levels East	31	30	69.0
251	Sha Tin - Hin Ka	32	32	69.5
252	Eastern - Hing Tung	35	34	69.6
253	Eastern - Kornhill	64	64	71.3
Inadequate subsample size	Kowloon City - Kai Tak East	11	11	39.3
Inadequate subsample size	Southern - Ap Lei Chau Estate	17	17	40.2
Inadequate subsample size	Yuen Long - Hung Fuk	9	9	40.3
Inadequate subsample size	Kwai Tsing - Lower Tai Wo Hau	11	11	41.3
Inadequate subsample size	Yuen Long - Pat Heung North	23	23	41.4
Inadequate subsample size	Tuen Mun - King Hing	12	12	41.5
Inadequate subsample size	Kwai Tsing - Shek Yam	22	22	41.8
Inadequate subsample size	Sham Shui Po - So Uk	13	13	41.8
Inadequate subsample size	Eastern - Upper Yiu Tung	22	22	42.5
Inadequate subsample size	Islands - Lantau	19	19	42.9
Inadequate subsample size	Kowloon City - To Kwa Wan North	16	16	43.0
Inadequate subsample size	Tuen Mun - Yuet Wu	23	22	43.3
Inadequate	Yau Tsim Mong - Mong Kok West	16	16	43.7

Rank	Constituency	Sample size	Valid sample size#	Average (days)*
subsample size				
Inadequate subsample size	Kwun Tong - Po Tat	16	16	43.9
Inadequate subsample size	Wong Tai Sin - Choi Wan South	19	19	44.2
Inadequate subsample size	North - Choi Yuen	28	28	45.0
Inadequate subsample size	Wong Tai Sin - Choi Hung	20	20	45.1
Inadequate subsample size	Tuen Mun - Leung King	22	22	45.2
Inadequate subsample size	Wong Tai Sin - Tsz Wan West	21	21	45.3
Inadequate subsample size	Kwai Tsing - Cheung Hang	17	16	45.4
Inadequate subsample size	Eastern - Hing Man	21	21	46.2
Inadequate subsample size	Tai Po - Tai Po Hui	21	21	46.4
Inadequate subsample size	Kwai Tsing - Shek Lei North	13	13	46.6
Inadequate subsample size	Kwun Tong - Sau Mau Ping North	22	22	46.9
Inadequate subsample size	Eastern - Siu Sai Wan	26	26	47.0
Inadequate subsample size	Yuen Long - Yat Chak	11	11	47.4
Inadequate subsample size	Kwun Tong - Kwun Tong On Tai	14	14	47.6
Inadequate subsample size	North - Sha Ta	19	19	47.8
Inadequate subsample size	Sai Kung - Kin Ming	15	15	48.3
Inadequate subsample size	Sham Shui Po - Shek Kip Mei	20	20	48.4
Inadequate subsample size	Kwun Tong - Shun Tin	20	20	48.9
Inadequate subsample size	Kwun Tong - Ping Shek	17	17	48.9
Inadequate subsample size	Islands - Peng Chau & Hei Ling Chau	16	16	49.1
Inadequate subsample size	Yuen Long - Yuet Yan	17	17	49.2
Inadequate subsample size	North - Wah Ming	24	24	49.6
Inadequate subsample size	Tsuen Wan - Shek Wai Kok	14	13	49.7
Inadequate subsample size	North - Fung Tsui	20	20	50.0
Inadequate subsample size	Kwun Tong - Choi Tak	8	7	50.1

Rank	Constituency	Sample size	Valid sample size#	Average (days)*
Inadequate subsample size	Kwun Tong - Lok Wah North	13	13	50.3
Inadequate subsample size	Yau Tsim Mong - Tsim Sha Tsui Central	23	23	50.5
Inadequate subsample size	Yuen Long - Tin Heng	20	20	50.5
Inadequate subsample size	Islands - Mun Yat	19	19	50.6
Inadequate subsample size	North - Cheung Wah	24	24	50.8
Inadequate subsample size	Yau Tsim Mong - Yau Ma Tei North	27	27	50.8
Inadequate subsample size	Kwai Tsing - Kwai Hing	25	25	50.8
Inadequate subsample size	Tsuen Wan - Clague Garden	26	26	51.2
Inadequate subsample size	Sham Shui Po - Pik Wui	28	28	51.3
Inadequate subsample size	Sham Shui Po - Fu Cheong	21	21	51.3
Inadequate subsample size	Sha Tin - Tin Sum	22	22	51.4
Inadequate subsample size	Wan Chai - Tai Fat Hau	26	26	51.5
Inadequate subsample size	Tuen Mun - So Kwun Wat	18	18	51.7
Inadequate subsample size	Yau Tsim Mong - Tai Kok Tsui South	17	17	51.8
Inadequate subsample size	Islands - Yat Tung Estate North	20	20	51.9
Inadequate subsample size	Sha Tin - Jat Chuen	20	20	52.0
Inadequate subsample size	Yau Tsim Mong - Jordan North	4	3	52.0
Inadequate subsample size	Kowloon City - Hung Hom	14	14	52.0
Inadequate subsample size	Tuen Mun - Yau Oi South	24	24	52.3
Inadequate subsample size	Tsuen Wan - Lei Muk Shue East	26	26	52.4
Inadequate subsample size	Kwai Tsing - Tai Pak Tin East	15	15	52.4
Inadequate subsample size	Tuen Mun - Lung Mun	25	25	52.6

Rank	Constituency	Sample size	Valid sample size#	Average (days)*
Inadequate subsample size	Kwai Tsing - Upper Tai Wo Hau	14	14	52.9
Inadequate subsample size	Tuen Mun - Yau Oi North	23	23	53.1
Inadequate subsample size	Kwun Tong - Tsui Ping	29	29	53.2
Inadequate subsample size	Sham Shui Po - Lai Kok	18	18	53.3
Inadequate subsample size	Yuen Long - Pek Long	23	23	53.3
Inadequate subsample size	Kowloon City - Kai Tak North	18	18	53.5
Inadequate subsample size	Yuen Long - Wang Yat	24	24	53.7
Inadequate subsample size	Tsuen Wan - Fuk Loi	17	17	53.8
Inadequate subsample size	Wan Chai - Southorn	24	24	53.8
Inadequate subsample size	Kwai Tsing - On Yam	18	18	53.8
Inadequate subsample size	Kwai Tsing - Kwai Chung Estate South	21	21	53.8
Inadequate subsample size	Sha Tin - Kwong Hong	25	25	54.2
Inadequate subsample size	Yuen Long - Chung Pak	15	15	54.3
Inadequate subsample size	Sham Shui Po - Nam Cheong East	23	22	54.3
Inadequate subsample size	Kwun Tong - Sau Mau Ping Central	16	16	54.4
Inadequate subsample size	Wong Tai Sin - Tung Mei	26	25	54.4
Inadequate subsample size	Central & Western - Peak	18	18	54.6
Inadequate subsample size	Kwai Tsing - Kwai Shing West Estate	24	24	54.6
Inadequate subsample size	Kwun Tong - Hing Tin	28	28	54.8
Inadequate subsample size	Islands - Lamma & Po Toi	15	15	54.9
Inadequate subsample size	North - Yu Tai	27	27	54.9
Inadequate subsample size	Wong Tai Sin - Choi Wan West	17	17	55.0

Rank	Constituency	Sample size	Valid sample size#	Average (days)*
Inadequate subsample size	Southern - Wah Fu North	19	19	55.1
Inadequate subsample size	Sai Kung - King Lam	29	29	55.2
Inadequate subsample size	Kwai Tsing - Kwai Shing East Estate	20	20	55.3
Inadequate subsample size	Wong Tai Sin - Ching On	23	23	55.3
Inadequate subsample size	Yuen Long - Tin Yiu	20	20	55.5
Inadequate subsample size	Southern - Shek Yue	20	20	55.5
Inadequate subsample size	Kwun Tong - Kwong Tak	29	28	55.6
Inadequate subsample size	Southern - Wah Fu South	21	20	55.7
Inadequate subsample size	Eastern - Yue Wan	22	22	55.7
Inadequate subsample size	Yuen Long - Yiu Yau	23	23	55.8
Inadequate subsample size	Sham Shui Po - Nam Cheong West	24	24	55.9
Inadequate subsample size	Tai Po - Wan Tau Tong	28	28	55.9
Inadequate subsample size	Yuen Long - Nam Ping	24	23	56.0
Inadequate subsample size	Yuen Long - Ching King	22	22	56.0
Inadequate subsample size	Yuen Long - Chung Wah	20	20	56.1
Inadequate subsample size	Kwun Tong - Upper Ngau Tau Kok Estate	16	16	56.1
Inadequate subsample size	Sai Kung - Sai Kung Central	29	29	56.1
Inadequate subsample size	Yuen Long - Yuen Long Centre	16	16	56.1
Inadequate subsample size	Eastern - Wan Tsui	24	24	56.2
Inadequate subsample size	Yuen Long - Ping Shan North	27	27	56.3
Inadequate subsample size	Yau Tsim Mong - Tsim Sha Tsui West	17	17	56.4
Inadequate subsample size	Wan Chai - Stubbs Road	16	16	56.4

Rank	Constituency	Sample size	Valid sample size#	Average (days)*
Inadequate subsample size	Tai Po - Tai Yuen	20	19	56.6
Inadequate subsample size	Kwai Tsing - Tai Pak Tin West	14	14	56.7
Inadequate subsample size	Kwun Tong - Yau Tong East	20	20	56.8
Inadequate subsample size	Kwun Tong - Chun Cheung	19	19	56.8
Inadequate subsample size	Sha Tin - Lek Yuen	21	21	57.0
Inadequate subsample size	Yau Tsim Mong - Jordan West	21	20	57.3
Inadequate subsample size	Yuen Long - Fu Yan	28	27	57.4
Inadequate subsample size	Tsuen Wan - Lei Muk Shue West	17	17	57.4
Inadequate subsample size	Sham Shui Po - Nam Shan, Tai Hang Tung & Tai Hang Sai	23	22	57.4
Inadequate subsample size	Tuen Mun - Wu King	18	18	57.4
Inadequate subsample size	Yau Tsim Mong - Mong Kok South	19	19	57.6
Inadequate subsample size	Yuen Long - Ha Tsuen	26	26	57.7
Inadequate subsample size	Kwun Tong - Lok Wah South	20	20	58.1
Inadequate subsample size	Tuen Mun - Hing Tsak	23	23	58.1
Inadequate subsample size	Kwai Tsing - Shing Hong	20	20	58.4
Inadequate subsample size	Kwai Tsing - Kwai Luen	22	22	58.5
Inadequate subsample size	Sha Tin - Sha Kok	26	26	58.5
Inadequate subsample size	Kwai Tsing - Kwai Chung Estate North	16	16	58.9
Inadequate subsample size	North - Shing Fuk	28	28	58.9
Inadequate subsample size	North - Sheung Shui Rural	26	25	59.2
Inadequate subsample size	Kwai Tsing - Shek Lei South	26	26	59.3
Inadequate subsample size	Yuen Long - Fung Nin	25	25	59.3

Rank	Constituency	Sample size	Valid sample size#	Average (days)*
Inadequate subsample size	Sha Tin - Sun Tin Wai	29	29	59.4
Inadequate subsample size	Kowloon City - Sheung Lok	27	27	59.5
Inadequate subsample size	Yuen Long - Shap Pat Heung East	18	18	59.5
Inadequate subsample size	Yau Tsim Mong - Cherry	25	25	59.7
Inadequate subsample size	Sha Tin - Kwong Yuen	25	25	59.9
Inadequate subsample size	Eastern - Healthy Village	30	29	60.0
Inadequate subsample size	Wong Tai Sin - Chuk Yuen South	12	12	60.0
Inadequate subsample size	Kowloon City - Ma Tau Kok	23	23	60.1
Inadequate subsample size	Kwun Tong - On Lee	14	14	60.3
Inadequate subsample size	Yuen Long - Tsz Yau	24	24	60.4
Inadequate subsample size	Sham Shui Po - Nam Cheong North	15	15	60.4
Inadequate subsample size	Kwun Tong - Yau Lai	16	15	60.4
Inadequate subsample size	Yuen Long - Shap Pat Heung North	14	14	60.4
Inadequate subsample size	Southern - Lei Tung I	29	29	60.5
Inadequate subsample size	Kwun Tong - Jordan Valley	20	20	60.8
Inadequate subsample size	Kowloon City - Kai Tak Central & South	19	19	60.8
Inadequate subsample size	North - Fanling Town	25	25	60.8
Inadequate subsample size	Sham Shui Po - Fortune	16	16	60.9
Inadequate subsample size	Eastern - Kai Hiu	19	19	60.9
Inadequate subsample size	Southern - Lei Tung II	20	20	61.0
Inadequate subsample size	Wong Tai Sin - Chuk Yuen North	28	28	61.0
Inadequate subsample size	Tai Po - Kwong Fuk & Plover Cove	25	25	61.1

Rank	Constituency	Sample size	Valid sample size#	Average (days)*
Inadequate subsample size	Wan Chai - Hennessy	15	15	61.3
Inadequate subsample size	Wan Chai - Canal Road	24	24	61.4
Inadequate subsample size	Kwun Tong - Yau Tong West	25	25	61.4
Inadequate subsample size	Kwun Tong - Hip Hong	18	18	61.5
Inadequate subsample size	Kowloon City - Lung Shing	21	21	61.7
Inadequate subsample size	Wong Tai Sin - Tsz Wan East	29	27	61.9
Inadequate subsample size	Tsuen Wan - Tak Wah	22	22	61.9
Inadequate subsample size	Kwun Tong - Po Lok	19	18	62.1
Inadequate subsample size	Sha Tin - Shui Chuen O	11	10	62.1
Inadequate subsample size	Eastern - Lower Yiu Tung	25	24	62.1
Inadequate subsample size	North - Ching Ho	13	13	62.3
Inadequate subsample size	Kwun Tong - Kwun Tong Central	24	24	62.4
Inadequate subsample size	Sham Shui Po - Lung Ping & Sheung Pak Tin	27	27	62.4
Inadequate subsample size	Kwai Tsing - Lai King	27	27	62.4
Inadequate subsample size	Kowloon City - To Kwa Wan South	23	23	62.6
Inadequate subsample size	Kwun Tong - Ting On	15	15	62.9
Inadequate subsample size	Sham Shui Po - Nam Cheong Central	9	9	63.2
Inadequate subsample size	Yau Tsim Mong - Mong Kok North	22	22	63.3
Inadequate subsample size	Kowloon City - Lok Man	24	24	63.4
Inadequate subsample size	Wong Tai Sin - Wang Tau Hom	23	23	63.4
Inadequate subsample size	Kwun Tong - Yau Chui	23	23	63.8
Inadequate subsample size	Sham Shui Po - Ha Pak Tin	23	23	64.0

Rank	Constituency	Sample size	Valid sample size#	Average (days)*
Inadequate subsample size	Tuen Mun - Tin King	23	23	64.1
Inadequate subsample size	Kwun Tong - Kai Yip	27	27	64.4
Inadequate subsample size	Eastern - Mount Parker	24	24	64.4
Inadequate subsample size	Southern - Bays Area	6	6	64.7
Inadequate subsample size	Yuen Long - Shing Yan	30	28	64.7
Inadequate subsample size	Tsuen Wan - Cheung Shek	20	20	64.8
Inadequate subsample size	Yuen Long - San Tin	15	15	65.0
Inadequate subsample size	Sham Shui Po - Un Chau	29	29	65.0
Inadequate subsample size	Tuen Mun - Butterfly	28	28	65.2
Inadequate subsample size	Yau Tsim Mong - Jordan South	25	24	65.7
Inadequate subsample size	Kwai Tsing - Hing Fong	31	29	66.1
Inadequate subsample size	Wan Chai - Broadwood	23	23	66.1
Inadequate subsample size	Wan Chai - Tai Hang	31	29	66.2
Inadequate subsample size	Kwun Tong - On Tat	14	14	66.2
Inadequate subsample size	Eastern - Tsui Wan	26	26	66.2
Inadequate subsample size	Yuen Long - Shui Oi	14	14	66.4
Inadequate subsample size	Tuen Mun - Yan Tin	10	9	66.7
Inadequate subsample size	Tuen Mun - Sam Shing	20	20	67.0
Inadequate subsample size	Tuen Mun - On Ting	21	21	67.4
Inadequate subsample size	Central & Western - Chung Wan	23	23	68.1
Inadequate subsample size	Wong Tai Sin - Choi Wan East	26	26	69.3
Inadequate subsample size	Kwun Tong - Sau Mau Ping South	13	12	70.0

Rank	Constituency	Sample size	Valid sample size#	Average (days)*
Inadequate subsample size	Yuen Long - Ping Shan Central	24	24	70.2
Inadequate subsample size	North - Tin Ping West	26	25	74.4
Inadequate subsample size	Yuen Long - Shui Wah	24	24	75.6
Inadequate subsample size	Yau Tsim Mong - Kowloon Station	22	22	75.7
Inadequate subsample size	Wan Chai - Jardine's Lookout	20	20	75.7
Inadequate subsample size	Eastern - Fei Tsui	18	18	78.3
Inadequate subsample size	Tuen Mun - Po Tin	2	2	105.0

Excludes cases of "don't know / hard to say" and "refuse to answer"

* Numeric conversion as follows: " No reserve at all / already none=0.0 days; 1-2 days=1.5 days; 3-4 days=3.5 days; 5-6 days=5.5 days; 1 week=7.0 days; 2 weeks=14.0 days; 3 weeks=21.0 days; 1 month=30.0 days; 1.5 months=45 days; 2 months=60 days; 3 months=90 days, over 3 months=120 days; don't know/hard to say are excluded."

Appendix 3

Mask Usage by Constituency

Appendix 3: CHIS result of each constituency -

"How would you describe your usage of face mask? Please try to use past 7 days as your reference."
 (Past 15 days data)

Rank	Constituency	Number of respondents	Valid samples #	Mean (mask/day) *
1	Islands - Discovery Bay	42	41	0.71
1	Wan Chai - Happy Valley	41	40	0.71
3	Sai Kung - Do Shin	40	37	0.74
4	Southern - Pokfulam	34	34	0.75
4	Southern - Stanley & Shek O	36	36	0.75
6	Tai Po - Sai Kung North	48	48	0.78
7	Kowloon City - Kadoorie	58	58	0.79
7	Tuen Mun - Lok Tsui	43	43	0.79
9	Sai Kung - Pak Sha Wan	36	36	0.80
9	Kwai Tsing - On Ho	58	58	0.80
9	Central & Western - University	57	56	0.80
9	Sham Shui Po - Nam Cheong South	30	30	0.80
9	Wan Chai - Victoria Park	32	32	0.80
14	Kwun Tong - King Tin	67	64	0.81
14	Eastern - Lei King Wan	56	56	0.81
14	Kowloon City - Prince	42	42	0.81
14	Tai Po - Tai Po Kau	51	51	0.81
14	Yau Tsim Mong - Charming	47	47	0.81
19	Sha Tin - Fo Tan	53	52	0.82
19	Wan Chai - Causeway Bay	45	43	0.82
19	Southern - Aberdeen	63	63	0.82
22	Kwun Tong - Laguna City	85	85	0.83
22	Tsuen Wan - Luk Yeung	68	67	0.83
22	Eastern - Tai Koo Shing West	65	65	0.83
25	Sha Tin - Chung On	49	48	0.84
25	Sai Kung - Wai Yan	46	46	0.84
25	Sha Tin - Chun Fung	34	34	0.84
25	Kowloon City - Hok Yuen Laguna Verde	36	36	0.84
29	Kowloon City - Hoi Sham	32	32	0.85
29	Wong Tai Sin - Lok Fu	37	37	0.85
29	Yuen Long - Shap Pat Heung West	34	34	0.85
29	Tai Po - Hong Lok Yuen	47	46	0.85
29	Tai Po - Shuen Wan	58	57	0.85
29	Sha Tin - Chun Ma	53	52	0.85
35	Sha Tin - Keng Hau	34	34	0.86

Rank	Constituency	Number of respondents	Valid samples #	Mean (mask/day) *
35	North - Queen's Hill	31	31	0.86
35	Tuen Mun - Fu Sun	41	41	0.86
35	Eastern - Yan Lam	50	50	0.86
35	Central & Western - Belcher	52	51	0.86
35	Kwai Tsing - Hing Fong	31	31	0.86
41	Kwun Tong - Kowloon Bay	45	45	0.87
41	Yau Tsim Mong - Yau Ma Tei South	33	33	0.87
41	Tsuen Wan - Discovery Park	58	58	0.87
41	Kowloon City - Whampoa East	47	47	0.87
41	Yuen Long - Kingswood North	61	61	0.87
41	Sha Tin - Fu Lung	41	41	0.87
41	Sai Kung - Kwan Po	63	62	0.87
41	North - Wah Do	32	32	0.87
41	Sai Kung - Sai Kung Islands	32	31	0.87
50	Sha Tin - Ma On Shan Town Centre	83	83	0.88
50	Sham Shui Po - Lei Cheng Uk	31	30	0.88
50	Central & Western - Water Street	44	44	0.88
50	Tai Po - Chung Ting	38	38	0.88
50	Eastern - Fortress Hill	61	61	0.88
55	North - Fanling South	54	53	0.89
55	Central & Western - Castle Road	30	30	0.89
55	Islands - Tung Chung South	58	57	0.89
55	Southern - South Horizons West	53	53	0.89
55	Southern - Tin Wan	33	33	0.89
55	Sai Kung - Wan Hang	57	57	0.89
55	Islands - Cheung Chau	36	35	0.89
55	Kwai Tsing - Cho Yiu	42	42	0.89
55	Tuen Mun - San Hui	33	33	0.89
55	Eastern - Tai Koo Shing East	75	74	0.89
55	Kwun Tong - Yuet Wah	34	34	0.89
55	Sai Kung - Choi Kin	31	31	0.89
55	Sai Kung - O Tong	69	69	0.89
55	Sai Kung - Wan Po North	69	69	0.89
69	Kwun Tong - Ping Tin	32	32	0.90
69	Sham Shui Po - Mei Foo Central	50	49	0.90
69	Wan Chai - Tai Hang	31	31	0.90
69	Tuen Mun - Hanford	56	55	0.90
69	Eastern - Heng Fa Chuen	95	94	0.90
69	Eastern - Hing Tung	35	35	0.90
69	Sai Kung - Hang Hau West	43	43	0.90

Rank	Constituency	Number of respondents	Valid samples #	Mean (mask/day) *
69	Tuen Mun - Siu Hei	40	39	0.90
69	Eastern - Tanner	41	41	0.90
78	Kwun Tong - To Tai	73	73	0.91
78	Southern - South Horizons East	42	41	0.91
78	Sai Kung - Wai King	83	83	0.91
78	Southern - Wah Kwai	33	33	0.91
78	Sai Kung - Nam On	59	59	0.91
78	Yau Tsim Mong - Fu Pak	43	43	0.91
78	Wong Tai Sin - Lung Ha	37	37	0.91
78	Eastern - Lok Hong	40	40	0.91
78	Tai Po - Tai Po Central	41	41	0.91
78	Central & Western - Sai Ying Pun	46	46	0.91
88	Eastern - Nam Fung	60	60	0.92
88	Sai Kung - Hang Hau East	44	44	0.92
88	Sha Tin - Lee On	51	51	0.92
88	Tuen Mun - Siu Hong	46	46	0.92
88	Tsuen Wan - Allway	45	45	0.92
88	Southern - Wong Chuk Hang	32	31	0.92
88	Yuen Long - Kam Tin	45	45	0.92
88	Sha Tin - Sui Wo	62	62	0.92
88	Wong Tai Sin - Chi Choi	58	58	0.92
88	Kowloon City - Oi Chun	43	42	0.92
88	Yuen Long - Yuen Lung	53	53	0.92
88	Kwun Tong - Lai Ching	56	56	0.92
88	Sham Shui Po - Lai Chi Kok North	30	30	0.93
88	Wong Tai Sin - San Po Kong	41	40	0.93
88	Sha Tin - Kam To	50	50	0.93
103	Eastern - Kam Ping	42	41	0.93
103	Sai Kung - Wan Po South	49	49	0.93
103	Eastern - Kornhill	64	64	0.93
103	Kwun Tong - Pak Nga	30	30	0.93
103	Yuen Long - Shap Pat Heung Central	45	45	0.93
103	Southern - Ap Lei Chau North	48	48	0.93
103	Kowloon City - Hung Hom Bay	34	34	0.93
103	Islands - Tung Chung Central	34	34	0.93
103	Southern - Chi Fu	73	73	0.93
103	Sai Kung - Fu Kwan	39	38	0.93
103	Tuen Mun - Prime View	67	67	0.93
103	Sha Tin - Wan Shing	38	38	0.93
103	Kwun Tong - Lam Tin	57	56	0.93

Rank	Constituency	Number of respondents	Valid samples #	Mean (mask/day) *
103	Tsuen Wan - Ma Wan	55	55	0.93
117	Tai Po - Wang Fuk	38	38	0.94
117	Sha Tin - Chui Ka	35	33	0.94
117	Kwun Tong - Hong Lok	34	34	0.94
117	Eastern - Shau Kei Wan	57	57	0.94
117	Kowloon City - Ma Tau Wai	45	45	0.94
117	Sai Kung - Tak Ming	31	31	0.94
117	Wong Tai Sin - Lung Sing	77	75	0.94
117	North - Luen Wo Hui	40	40	0.94
117	Kwai Tsing - Tsing Yi South	41	40	0.94
117	Wong Tai Sin - Tin Keung	44	43	0.94
117	Yuen Long - Kingswood South	51	50	0.94
117	Wong Tai Sin - Lung Sheung	34	34	0.94
117	Sha Tin - Wu Kai Sha	82	82	0.94
130	Tuen Mun - Siu Tsui	57	57	0.95
130	Yuen Long - Shui Pin	52	52	0.95
130	Sai Kung - Hau Tak	35	35	0.95
130	Tai Po - Lam Tsuen Valley	57	55	0.95
130	Tsuen Wan - Tsuen Wan Rural	70	70	0.95
130	Central & Western - Kwun Lung	57	57	0.95
130	Sai Kung - Fu Nam	57	57	0.95
130	Wong Tai Sin - Fung Tak	33	32	0.95
130	Sha Tin - Hin Ka	32	32	0.95
130	Tsuen Wan - Yeung Uk Road	32	31	0.95
130	North - Yan Shing	36	36	0.95
130	Sai Kung - Po Yee	40	40	0.95
142	Wan Chai - Tin Hau	30	30	0.96
142	Sha Tin - Yiu On	37	36	0.96
142	Eastern - A Kung Ngam	35	35	0.96
142	Sha Tin - City One	82	82	0.96
142	Tai Po - Fu Ming Sun	36	36	0.96
142	Sham Shui Po - Mei Foo South	70	70	0.96
142	Kowloon City - Ho Man Tin	80	80	0.96
142	Eastern - Braemar Hill	59	58	0.96
150	Sha Tin - Chui Tin	36	36	0.97
150	Sham Shui Po - Lai Chi Kok Central	59	59	0.97
150	Wong Tai Sin - Tung Tau	36	36	0.97
150	Sha Tin - Tai Wai	55	54	0.97
150	Sha Tin - Lower Shing Mun	32	32	0.97
150	Sha Tin - Sha Tin Town Centre	68	67	0.97

Rank	Constituency	Number of respondents	Valid samples #	Mean (mask/day) *
150	Eastern - City Garden	39	39	0.97
150	Kwai Tsing - Tsing Yi Estate	52	52	0.97
150	Sham Shui Po - Cheung Sha Wan	47	46	0.97
159	Kowloon City - Oi Man	32	32	0.98
159	Sai Kung - Yan Ying	56	55	0.98
159	Islands - Tung Chung North	30	30	0.98
159	Kwun Tong - Hiu Lai	54	54	0.98
159	Yau Tsim Mong - Mong Kok East	41	41	0.98
159	Central & Western - Centre Street	33	32	0.98
159	Yau Tsim Mong - East Tsim Sha Tsui & King's Park	34	34	0.98
159	Kwun Tong - Lower Ngau Tau Kok Estate	36	35	0.98
167	Sham Shui Po - Yau Yat Tsuen	46	45	0.99
167	Sha Tin - Pok Hong	32	31	0.99
167	Kwai Tsing - Wah Lai	46	46	0.99
167	Central & Western - Shek Tong Tsui	36	35	0.99
171	Sha Tin - Chung Tin	36	36	1.00
171	Eastern - Kornhill Garden	38	38	1.00
171	Kowloon City - Ka Wai	43	42	1.00
171	Sha Tin - Yu Yan	66	64	1.00
171	Sha Tin - Wong Uk	54	54	1.00
171	Tuen Mun - Fu Tai	34	33	1.00
171	Yuen Long - Fairview Park	72	72	1.00
171	Yuen Long - Yuen Long Tung Tau	39	39	1.00
171	Sha Tin - Hoi Nam	42	42	1.00
171	Sai Kung - Kwong Ming	43	43	1.00
171	Kwai Tsing - Wai Ying	48	48	1.00
171	Wong Tai Sin - King Fu	61	61	1.00
171	Tuen Mun - Siu Chi	65	65	1.00
171	Eastern - Sai Wan Ho	55	55	1.00
185	Tai Po - San Fu	57	57	1.01
185	Central & Western - Mid Levels East	31	31	1.01
185	Sham Shui Po - Mei Foo North	66	66	1.01
185	Kwai Tsing - Cheung On	33	33	1.01
185	Wong Tai Sin - Fung Wong	37	37	1.01
185	Eastern - Provident	51	50	1.01
185	Eastern - Fort Street	47	47	1.01
192	Sha Tin - Yue Shing	64	64	1.02
192	Yau Tsim Mong - Olympic	45	44	1.02
192	Central & Western - Sheung Wan	33	33	1.02

Rank	Constituency	Number of respondents	Valid samples #	Mean (mask/day) *
192	Eastern - Fullview	37	37	1.02
192	Yuen Long - Pat Heung South	43	43	1.02
192	Sha Tin - On Tai	34	34	1.02
192	Tuen Mun - Tsui Hing	58	58	1.02
199	Yau Tsim Mong - Tai Kok Tsui North	47	47	1.03
199	Kowloon City - Whampoa West	66	66	1.03
199	Tuen Mun - Tuen Mun Town Centre	50	50	1.03
199	Sha Tin - Tai Shui Hang	40	40	1.03
199	Eastern - Tsui Tak	35	34	1.03
199	Kwun Tong - Sheung Shun	31	31	1.03
205	Kowloon City - Sung Wong Toi	33	33	1.04
205	Tsuen Wan - Tsuen Wan South	56	56	1.04
205	Wong Tai Sin - Tsui Chuk & Pang Ching	33	33	1.04
205	Sha Tin - Di Yee	48	48	1.04
205	Kowloon City - Ma Hang Chung	45	45	1.04
205	Tsuen Wan - Hoi Bun	76	74	1.04
205	Yau Tsim Mong - Tai Nan	30	30	1.04
212	Wan Chai - Oi Kwan	33	33	1.05
212	Tsuen Wan - Lai To	51	51	1.05
212	Kwai Tsing - Ching Fat	36	35	1.05
212	Sai Kung - Hong King	33	33	1.05
212	Central & Western - Tung Wah	37	37	1.05
212	Central & Western - Kennedy Town & Mount Davis	32	32	1.05
218	Sai Kung - Hoi Chun	53	53	1.06
218	Tsuen Wan - Tsuen Wan West	69	68	1.06
218	Yuen Long - Ping Shan South	50	50	1.06
218	Tai Po - Po Nga	52	52	1.06
218	Wong Tai Sin - Ching Oi	39	39	1.06
218	Sha Tin - Bik Woo	44	44	1.06
218	Tsuen Wan - Ting Sham	59	59	1.06
225	Kwai Tsing - Greenfield	73	73	1.07
225	North - Shek Wu Hui	30	30	1.07
225	Eastern - Aldrich Bay	32	32	1.07
225	Sham Shui Po - Po Lai	32	32	1.07
225	Tuen Mun - Kin Sang	32	32	1.07
225	Tsuen Wan - Tsuen Wan Centre	34	34	1.07
225	Kwai Tsing - Lai Wah	40	40	1.08
232	Yuen Long - Shing Yan	30	30	1.08
232	Sha Tin - Heng On	33	33	1.08

Rank	Constituency	Number of respondents	Valid samples #	Mean (mask/day) *
234	Yuen Long - Fung Cheung	58	57	1.09
235	Kowloon City - Kowloon Tong	42	42	1.10
235	Tuen Mun - Tuen Mun Rural	37	37	1.10
235	Tai Po - Old Market & Serenity	46	46	1.10
238	Sha Tin - Kam Ying	45	45	1.11
238	Tai Po - Yee Fu	39	39	1.11
240	Central & Western - Sai Wan	31	30	1.12
240	North - Tin Ping East	33	33	1.12
242	Kwai Tsing - Kwai Fong	32	32	1.14
243	Wong Tai Sin - Lung Tsui	31	31	1.15
243	Eastern - Quarry Bay	41	41	1.15
243	Sham Shui Po - Lai Chi Kok South	30	30	1.15
246	Sai Kung - Po Lam	40	40	1.16
247	Sha Tin - Wo Che Estate	32	30	1.17
248	Tuen Mun - San King	31	30	1.22
248	Tuen Mun - Shan King	33	33	1.22
248	Sai Kung - Sheung Tak	36	36	1.22
251	Tai Po - Tai Wo	39	39	1.26
252	Kwai Tsing - Cheung Ching	30	30	1.28
253	Kwai Tsing - Cheung Hong	37	37	1.33
Inadequate subsample size	Islands - Lamma & Po Toi	15	15	0.62
Inadequate subsample size	Kwai Tsing - Tai Pak Tin East	15	15	0.65
Inadequate subsample size	Yuen Long - Hung Fuk	9	9	0.73
Inadequate subsample size	Yuen Long - Chung Pak	15	15	0.74
Inadequate subsample size	Tuen Mun - Po Tin	2	2	0.75
Inadequate subsample size	Sham Shui Po - Nam Shan, Tai Hang Tung & Tai Hang Sai	23	22	0.76
Inadequate subsample size	Tai Po - Tai Po Hui	21	21	0.76
Inadequate subsample size	Kwun Tong - Lok Wah South	20	19	0.76
Inadequate subsample size	Yuen Long - Shap Pat Heung North	14	14	0.77
Inadequate subsample size	Tsuen Wan - Lei Muk Shue East	26	26	0.78
Inadequate subsample size	Yuen Long - Nam Ping	24	23	0.78
Inadequate subsample size	Kowloon City - Lung Shing	21	20	0.78
Inadequate subsample size	Tuen Mun - Lung Mun	25	25	0.79

Rank	Constituency	Number of respondents	Valid samples #	Mean (mask/day) *
Inadequate subsample size	Islands - Yat Tung Estate North	20	20	0.79
Inadequate subsample size	Islands - Lantau	19	19	0.79
Inadequate subsample size	Eastern - Siu Sai Wan	26	24	0.80
Inadequate subsample size	Yau Tsim Mong - Kowloon Station	22	22	0.81
Inadequate subsample size	Yau Tsim Mong - Tsim Sha Tsui Central	23	22	0.81
Inadequate subsample size	Wan Chai - Hennessy	15	15	0.81
Inadequate subsample size	Yau Tsim Mong - Mong Kok South	19	19	0.81
Inadequate subsample size	Yau Tsim Mong - Mong Kok North	22	22	0.82
Inadequate subsample size	Kwai Tsing - Tai Pak Tin West	14	14	0.82
Inadequate subsample size	Sai Kung - Kin Ming	15	15	0.82
Inadequate subsample size	Kwai Tsing - Shing Hong	20	20	0.83
Inadequate subsample size	Eastern - Fei Tsui	18	18	0.83
Inadequate subsample size	Southern - Bays Area	6	6	0.83
Inadequate subsample size	Wong Tai Sin - Chuk Yuen South	12	12	0.83
Inadequate subsample size	Kwun Tong - Hip Hong	18	18	0.84
Inadequate subsample size	Kowloon City - Kai Tak East	11	11	0.84
Inadequate subsample size	Kwun Tong - Sau Mau Ping North	22	22	0.84
Inadequate subsample size	Kwai Tsing - Lai King	27	27	0.85
Inadequate subsample size	Kwun Tong - Yau Tong East	20	20	0.85
Inadequate subsample size	Tsuen Wan - Tak Wah	22	22	0.85
Inadequate subsample size	Yuen Long - Ha Tsuen	26	25	0.85
Inadequate subsample size	Kwun Tong - Sau Mau Ping South	13	12	0.85
Inadequate subsample size	Tsuen Wan - Clague Garden	26	26	0.86
Inadequate subsample size	Yuen Long - Tin Yiu	20	20	0.86
Inadequate subsample size	Kwun Tong - Po Tat	16	16	0.86

Rank	Constituency	Number of respondents	Valid samples #	Mean (mask/day) *
Inadequate subsample size	Yuen Long - Yuen Long Centre	16	16	0.86
Inadequate subsample size	Kwai Tsing - On Yam	18	18	0.86
Inadequate subsample size	Kwai Tsing - Lower Tai Wo Hau	11	11	0.86
Inadequate subsample size	Kowloon City - Sheung Lok	27	27	0.86
Inadequate subsample size	Wong Tai Sin - Tsz Wan West	21	21	0.87
Inadequate subsample size	Kwun Tong - Kwun Tong Central	24	24	0.87
Inadequate subsample size	Yau Tsim Mong - Cherry	25	25	0.87
Inadequate subsample size	Southern - Ap Lei Chau Estate	17	17	0.87
Inadequate subsample size	Yau Tsim Mong - Jordan North	4	4	0.88
Inadequate subsample size	Sham Shui Po - Lai Kok	18	18	0.88
Inadequate subsample size	North - Shing Fuk	28	28	0.88
Inadequate subsample size	Yuen Long - Tsz Yau	24	24	0.89
Inadequate subsample size	Kwun Tong - Ping Shek	17	17	0.89
Inadequate subsample size	Tsuen Wan - Lei Muk Shue West	17	17	0.89
Inadequate subsample size	Sha Tin - Sha Kok	26	26	0.89
Inadequate subsample size	Sham Shui Po - Fu Cheong	21	21	0.89
Inadequate subsample size	Kowloon City - Kai Tak Central & South	19	19	0.89
Inadequate subsample size	Kowloon City - Ma Tau Kok	23	23	0.89
Inadequate subsample size	North - Sheung Shui Rural	26	25	0.90
Inadequate subsample size	North - Yu Tai	27	27	0.90
Inadequate subsample size	Kowloon City - To Kwa Wan North	16	16	0.90
Inadequate subsample size	Sham Shui Po - Lung Ping & Sheung Pak Tin	27	27	0.90

Rank	Constituency	Number of respondents	Valid samples #	Mean (mask/day) *
Inadequate subsample size	Kwun Tong - On Lee	14	14	0.90
Inadequate subsample size	North - Cheung Wah	24	24	0.91
Inadequate subsample size	Tai Po - Kwong Fuk & Plover Cove	25	24	0.91
Inadequate subsample size	Sham Shui Po - Nam Cheong West	24	24	0.91
Inadequate subsample size	Yuen Long - San Tin	15	14	0.91
Inadequate subsample size	Yuen Long - Tin Shing	30	29	0.91
Inadequate subsample size	Kwun Tong - Chun Cheung	19	18	0.91
Inadequate subsample size	Wan Chai - Broadwood	23	23	0.92
Inadequate subsample size	Kwun Tong - Choi Tak	8	8	0.92
Inadequate subsample size	Wan Chai - Southorn	24	24	0.92
Inadequate subsample size	Kwun Tong - Yau Chui	23	23	0.92
Inadequate subsample size	Kwun Tong - Lok Wah North	13	13	0.92
Inadequate subsample size	Yau Tsim Mong - Jordan South	25	25	0.92
Inadequate subsample size	Wong Tai Sin - Choi Wan South	19	19	0.93
Inadequate subsample size	Sham Shui Po - Un Chau	29	28	0.93
Inadequate subsample size	Southern - Lei Tung I	29	29	0.93
Inadequate subsample size	Wan Chai - Jardine's Lookout	20	20	0.93
Inadequate subsample size	Tsuen Wan - Cheung Shek	20	20	0.93
Inadequate subsample size	Kwun Tong - Jordan Valley	20	19	0.93
Inadequate subsample size	Central & Western - Chung Wan	23	23	0.94
Inadequate subsample size	Sham Shui Po - Ha Pak Tin	23	23	0.94
Inadequate subsample size	Yau Tsim Mong - Yau Ma Tei North	27	26	0.94

Rank	Constituency	Number of respondents	Valid samples #	Mean (mask/day) *
Inadequate subsample size	Sham Shui Po - So Uk	13	13	0.94
Inadequate subsample size	Sai Kung - Sai Kung Central	29	28	0.94
Inadequate subsample size	Eastern - Mount Parker	24	24	0.94
Inadequate subsample size	Yuen Long - Wang Yat	24	24	0.94
Inadequate subsample size	Kwai Tsing - Shek Yam	22	22	0.95
Inadequate subsample size	North - Sha Ta	19	19	0.95
Inadequate subsample size	Sham Shui Po - Shek Kip Mei	20	20	0.95
Inadequate subsample size	Kwai Tsing - Shek Lei South	26	26	0.95
Inadequate subsample size	Yuen Long - Shap Pat Heung East	18	18	0.95
Inadequate subsample size	Kowloon City - To Kwa Wan South	23	22	0.95
Inadequate subsample size	Sha Tin - Shui Chuen O	11	11	0.95
Inadequate subsample size	Central & Western - Peak	18	18	0.96
Inadequate subsample size	Tuen Mun - Butterfly	28	27	0.96
Inadequate subsample size	Eastern - Kai Hiu	19	19	0.96
Inadequate subsample size	Wong Tai Sin - Choi Hung	20	19	0.96
Inadequate subsample size	Sha Tin - Kwong Hong	25	24	0.96
Inadequate subsample size	Yuen Long - Tin Heng	20	20	0.96
Inadequate subsample size	Kwun Tong - Yau Tong West	25	25	0.96
Inadequate subsample size	North - Fanling Town	25	25	0.96
Inadequate subsample size	Sham Shui Po - Pik Wui	28	28	0.96
Inadequate subsample size	Wong Tai Sin - Chuk Yuen North	28	28	0.96
Inadequate subsample size	Eastern - Lower Yiu Tung	25	24	0.97

Rank	Constituency	Number of respondents	Valid samples #	Mean (mask/day) *
Inadequate subsample size	Yuen Long - Yat Chak	11	11	0.97
Inadequate subsample size	Sha Tin - Tin Sum	22	22	0.97
Inadequate subsample size	Sham Shui Po - Nam Cheong East	23	23	0.97
Inadequate subsample size	Kwun Tong - Po Lok	19	18	0.97
Inadequate subsample size	Sha Tin - Sun Tin Wai	29	29	0.97
Inadequate subsample size	Yau Tsim Mong - Tsim Sha Tsui West	17	17	0.98
Inadequate subsample size	Eastern - Hing Man	21	21	0.98
Inadequate subsample size	Eastern - Yue Wan	22	22	0.98
Inadequate subsample size	Tuen Mun - Yuet Wu	23	23	0.98
Inadequate subsample size	Eastern - Wan Tsui	24	24	0.98
Inadequate subsample size	North - Choi Yuen	28	28	0.98
Inadequate subsample size	Kwai Tsing - Kwai Shing East Estate	20	20	0.98
Inadequate subsample size	Kwun Tong - Tsui Ping	29	29	0.98
Inadequate subsample size	Tuen Mun - On Ting	21	21	0.98
Inadequate subsample size	Southern - Wah Fu South	21	20	0.98
Inadequate subsample size	Kwun Tong - Shun Tin	20	20	0.98
Inadequate subsample size	Islands - Peng Chau & Hei Ling Chau	16	16	0.98
Inadequate subsample size	Sha Tin - Kwong Yuen	25	25	0.99
Inadequate subsample size	Tuen Mun - Sam Shing	20	20	0.99
Inadequate subsample size	Tuen Mun - Leung King	22	22	0.99
Inadequate subsample size	Tuen Mun - Tin King	23	22	0.99
Inadequate subsample size	Tuen Mun - Yau Oi North	23	23	0.99

Rank	Constituency	Number of respondents	Valid samples #	Mean (mask/day) *
Inadequate subsample size	North - Fung Tsui	20	20	0.99
Inadequate subsample size	Wan Chai - Stubbs Road	16	16	1.00
Inadequate subsample size	Yau Tsim Mong - Mong Kok West	16	16	1.00
Inadequate subsample size	Sai Kung - King Lam	29	29	1.00
Inadequate subsample size	Wan Chai - Tai Fat Hau	26	26	1.01
Inadequate subsample size	Kwai Tsing - Shek Lei North	13	13	1.01
Inadequate subsample size	Eastern - Healthy Village	30	29	1.01
Inadequate subsample size	Wong Tai Sin - Tung Mei	26	24	1.02
Inadequate subsample size	Yuen Long - Pat Heung North	23	23	1.02
Inadequate subsample size	Yuen Long - Fung Nin	25	25	1.03
Inadequate subsample size	Eastern - Upper Yiu Tung	22	21	1.03
Inadequate subsample size	Yuen Long - Ping Shan Central	24	24	1.03
Inadequate subsample size	Kwai Tsing - Kwai Hing	25	25	1.03
Inadequate subsample size	Kwun Tong - Upper Ngau Tau Kok Estate	16	16	1.04
Inadequate subsample size	Wong Tai Sin - Tsz Wan East	29	29	1.04
Inadequate subsample size	Tai Po - Tai Yuen	20	20	1.04
Inadequate subsample size	Sham Shui Po - Nam Cheong North	15	15	1.04
Inadequate subsample size	Southern - Lei Tung II	20	20	1.04
Inadequate subsample size	Tuen Mun - King Hing	12	12	1.04
Inadequate subsample size	Yau Tsim Mong - Jordan West	21	21	1.04
Inadequate subsample size	Kwun Tong - Hing Tin	28	28	1.05
Inadequate subsample size	Tuen Mun - Hing Tsak	23	23	1.05

Rank	Constituency	Number of respondents	Valid samples #	Mean (mask/day) *
Inadequate subsample size	Kwai Tsing - Kwai Luen	22	22	1.06
Inadequate subsample size	Islands - Mun Yat	19	19	1.06
Inadequate subsample size	Tuen Mun - Yan Tin	10	10	1.06
Inadequate subsample size	Wong Tai Sin - Choi Wan East	26	26	1.06
Inadequate subsample size	Wong Tai Sin - Wang Tau Hom	23	23	1.06
Inadequate subsample size	Yuen Long - Yuet Yan	17	16	1.06
Inadequate subsample size	Sham Shui Po - Nam Cheong Central	9	9	1.06
Inadequate subsample size	Kwun Tong - Kai Yip	27	27	1.06
Inadequate subsample size	Kwun Tong - On Tat	14	14	1.07
Inadequate subsample size	Kowloon City - Lok Man	24	23	1.07
Inadequate subsample size	Tuen Mun - Yau Oi South	24	24	1.07
Inadequate subsample size	Yuen Long - Shui Wah	24	24	1.08
Inadequate subsample size	Yau Tsim Mong - Tai Kok Tsui South	17	17	1.08
Inadequate subsample size	Kwai Tsing - Kwai Chung Estate South	21	21	1.08
Inadequate subsample size	Yuen Long - Chung Wah	20	20	1.09
Inadequate subsample size	Tai Po - Wan Tau Tong	28	28	1.11
Inadequate subsample size	Eastern - Tsui Wan	26	26	1.12
Inadequate subsample size	Tuen Mun - So Kwun Wat	18	18	1.12
Inadequate subsample size	Kwun Tong - Ting On	15	15	1.12
Inadequate subsample size	Kwun Tong - Yau Lai	16	15	1.12
Inadequate subsample size	North - Wah Ming	24	24	1.13
Inadequate subsample size	Southern - Shek Yue	20	20	1.14

Rank	Constituency	Number of respondents	Valid samples #	Mean (mask/day) *
Inadequate subsample size	Kwai Tsing - Kwai Shing West Estate	24	24	1.14
Inadequate subsample size	Southern - Wah Fu North	19	18	1.14
Inadequate subsample size	Kowloon City - Kai Tak North	18	18	1.14
Inadequate subsample size	Yuen Long - Yiu Yau	23	23	1.14
Inadequate subsample size	North - Tin Ping West	26	25	1.15
Inadequate subsample size	Wong Tai Sin - Ching On	23	23	1.16
Inadequate subsample size	Yuen Long - Ping Shan North	27	27	1.16
Inadequate subsample size	Sha Tin - Lek Yuen	21	21	1.16
Inadequate subsample size	Yuen Long - Ching King	22	22	1.16
Inadequate subsample size	Kwun Tong - Kwong Tak	29	29	1.16
Inadequate subsample size	Kwai Tsing - Kwai Chung Estate North	16	16	1.16
Inadequate subsample size	Wong Tai Sin - Choi Wan West	17	17	1.16
Inadequate subsample size	Sha Tin - Jat Chuen	20	20	1.17
Inadequate subsample size	Sham Shui Po - Fortune	16	16	1.18
Inadequate subsample size	Kwai Tsing - Upper Tai Wo Hau	14	14	1.18
Inadequate subsample size	Yuen Long - Fu Yan	28	28	1.18
Inadequate subsample size	Tuen Mun - Wu King	18	18	1.19
Inadequate subsample size	Wan Chai - Canal Road	24	24	1.19
Inadequate subsample size	Kwai Tsing - Cheung Hang	17	17	1.19
Inadequate subsample size	Tsuen Wan - Shek Wai Kok	14	14	1.20
Inadequate subsample size	Yuen Long - Pek Long	23	23	1.20
Inadequate subsample size	Tai Po - Fu Heng	30	29	1.20

Rank	Constituency	Number of respondents	Valid samples #	Mean (mask/day) *
Inadequate subsample size	Kwun Tong - Sau Mau Ping Central	16	16	1.20
Inadequate subsample size	Kowloon City - Hung Hom	14	14	1.21
Inadequate subsample size	Yuen Long - Shui Oi	14	14	1.25
Inadequate subsample size	Tsuen Wan - Fuk Loi	17	17	1.26
Inadequate subsample size	Sai Kung - Tsui Lam	30	29	1.31
Inadequate subsample size	Kwun Tong - Kwun Tong On Tai	14	14	1.32
Inadequate subsample size	North - Ching Ho	13	13	1.37

Excludes cases of "refuse to answer"

* Numeric conversion as follows: "I do not use mask at all / already no mask to use=0 masks/day; 1 per more than 3 days=1/4 masks/day; 1 per 3 days=1/3 masks/day; 1 per 2 days=1/2 masks/day; 1 per day=1 masks/day; 2 per day=2 masks/day; 3 per day=3 masks/day; 4 per day=4 masks/day; more than 4 per day=5 masks/day."

Appendix 4

Number of Masks by Constituency

Appendix 4: CHIS result of each constituency -"Number of Masks Available for Use" (Past 15 days data)

Rank	Constituency	Number of respondents	Valid samples	Mean (pieces)
1	Kowloon City - Prince	42	42	37.8
2	Tuen Mun - San Hui	33	33	38.8
3	Wan Chai - Happy Valley	41	40	40.2
4	Sai Kung - Sai Kung Islands	32	31	41.1
5	Sha Tin - Chui Ka	35	33	41.2
6	Sai Kung - Do Shin	40	37	41.6
7	Kwun Tong - Yuet Wah	34	34	42.1
7	Kowloon City - Kadoorie	58	58	42.1
9	Eastern - Yan Lam	50	50	43.5
10	Sham Shui Po - Lai Chi Kok North	30	30	43.7
11	Sha Tin - Chung On	49	46	43.9
12	Sham Shui Po - Nam Cheong South	30	30	44.1
13	Tuen Mun - Lok Tsui	43	43	44.2
14	Sha Tin - Chung Tin	36	36	45.0
15	Tuen Mun - Fu Sun	41	40	45.1
16	Wong Tai Sin - Lok Fu	37	37	45.2
17	Kowloon City - Hung Hom Bay	34	34	45.7
18	Tai Po - Shuen Wan	58	57	45.8
19	Yau Tsim Mong - Charming	47	47	45.9
20	Islands - Cheung Chau	36	35	46.1
21	Islands - Discovery Bay	42	41	46.3
22	Eastern - Lok Hong	40	40	46.4
23	Tai Po - Chung Ting	38	37	46.5
24	Kwai Tsing - On Ho	58	58	46.7
25	Kwun Tong - Laguna City	85	85	46.9
25	Central & Western - University	57	55	46.9
27	Southern - Stanley & Shek O	36	36	47.1
28	Kwun Tong - Kowloon Bay	45	45	48.0
28	North - Queen's Hill	31	31	48.0
30	Tsuen Wan - Yeung Uk Road	32	31	48.7
31	North - Yan Shing	36	35	48.8
32	Tsuen Wan - Discovery Park	58	57	49.0
32	Southern - Aberdeen	63	63	49.0
34	Kwun Tong - Ping Tin	32	32	49.2
35	Southern - Pokfulam	34	34	49.3
35	Sai Kung - Tak Ming	31	31	49.3

Rank	Constituency	Number of respondents	Valid samples	Mean (pieces)
37	Southern - Tin Wan	33	33	49.5
38	Eastern - A Kung Ngam	35	35	50.0
39	Kwun Tong - Lam Tin	57	55	50.2
39	Wong Tai Sin - Tin Keung	44	43	50.2
41	Kwun Tong - Lower Ngau Tau Kok Estate	36	33	50.5
41	Wong Tai Sin - Lung Sheung	34	34	50.5
43	Tai Po - Tai Po Kau	51	51	50.6
44	Yau Tsim Mong - Fu Pak	43	43	50.8
45	Sai Kung - Wan Hang	57	57	50.9
45	Sha Tin - Fo Tan	53	52	50.9
45	Tsuen Wan - Luk Yeung	68	67	50.9
48	Sai Kung - Wai Yan	46	46	51.0
48	Sha Tin - Lower Shing Mun	32	31	51.0
50	Kwai Tsing - Ching Fat	36	35	51.2
51	Sha Tin - Chun Ma	53	52	51.5
51	Kwai Tsing - Cheung On	33	33	51.5
53	Tuen Mun - Hanford	56	55	51.7
54	Sai Kung - Hang Hau East	44	44	51.8
55	Kwun Tong - Lai Ching	56	55	51.9
55	Tai Po - Sai Kung North	48	48	51.9
55	Sai Kung - Pak Sha Wan	36	35	51.9
58	Wong Tai Sin - San Po Kong	41	40	52.1
58	Sai Kung - Fu Nam	57	56	52.1
60	Kowloon City - Hoi Sham	32	31	52.3
61	Kwai Tsing - Cho Yiu	42	42	52.4
62	Kwun Tong - Pak Nga	30	30	52.5
63	Tai Po - Hong Lok Yuen	47	45	52.6
64	Tsuen Wan - Allway	45	45	52.9
64	Sai Kung - Hang Hau West	43	43	52.9
64	Tai Po - Wang Fuk	38	38	52.9
64	Kowloon City - Whampoa East	47	47	52.9
68	North - Fanling South	54	52	53.0
69	Central & Western - Belcher	52	49	53.1
69	Sha Tin - Wan Shing	38	37	53.1
71	Kwun Tong - King Tin	67	64	53.2
72	Sai Kung - Fu Kwan	39	38	53.3
73	Sham Shui Po - Cheung Sha Wan	47	45	53.5
73	Kwun Tong - Hiu Lai	54	54	53.5
75	Wong Tai Sin - Tsui Chuk & Pang Ching	33	33	53.6
76	Eastern - Lei King Wan	56	56	53.7
77	Southern - South Horizons West	53	53	53.8

Rank	Constituency	Number of respondents	Valid samples	Mean (pieces)
78	Sha Tin - Tai Shui Hang	40	39	53.9
79	Yuen Long - Shap Pat Heung West	34	34	54.0
80	Eastern - Tai Koo Shing West	65	65	54.2
81	Yau Tsim Mong - Yau Ma Tei South	33	33	54.3
81	Sha Tin - Wong Uk	54	54	54.3
81	Eastern - Tai Koo Shing East	75	74	54.3
81	Yuen Long - Fairview Park	72	71	54.3
85	Tai Po - Fu Ming Sun	36	36	54.4
86	Sha Tin - Chun Fung	34	33	54.5
87	Sai Kung - Kwan Po	63	62	54.6
87	Yuen Long - Kingswood North	61	61	54.6
87	Eastern - Heng Fa Chuen	95	94	54.6
90	Kowloon City - Ma Tau Wai	45	45	54.8
91	Kowloon City - Hok Yuen Laguna Verde	36	36	54.9
92	Sha Tin - Lee On	51	51	55.1
93	Sai Kung - Hau Tak	35	35	55.4
93	Central & Western - Water Street	44	44	55.4
95	Tai Po - Tai Po Central	41	41	55.7
95	Kwai Tsing - Wai Ying	48	48	55.7
97	Wong Tai Sin - Lung Ha	37	37	55.9
97	Sai Kung - Wan Po North	69	69	55.9
99	Islands - Tung Chung North	30	30	56.0
99	Wan Chai - Oi Kwan	33	32	56.0
101	Sai Kung - Wai King	83	81	56.1
102	Eastern - Shau Kei Wan	57	57	56.2
103	Sha Tin - Ma On Shan Town Centre	83	82	56.3
104	Wong Tai Sin - King Fu	61	61	56.4
104	Sha Tin - Fu Lung	41	41	56.4
104	Wong Tai Sin - Fung Tak	33	32	56.4
107	Southern - Wah Kwai	33	33	56.5
108	Sha Tin - Keng Hau	34	34	56.6
108	Yuen Long - Kam Tin	45	44	56.6
110	Wan Chai - Causeway Bay	45	43	56.7
110	Sha Tin - Chui Tin	36	36	56.7
110	Central & Western - Sai Ying Pun	46	46	56.7
113	Tai Po - Yee Fu	39	39	56.8
113	Sai Kung - Wan Po South	49	49	56.8
113	Tai Po - Lam Tsuen Valley	57	55	56.8
116	Kwai Tsing - Tsing Yi South	41	40	56.9
116	Kowloon City - Sung Wong Toi	33	32	56.9
118	Tai Po - Po Nga	52	52	57.0

Rank	Constituency	Number of respondents	Valid samples	Mean (pieces)
118	Sha Tin - Di Yee	48	48	57.0
120	Tai Po - San Fu	57	54	57.1
120	Yuen Long - Shui Pin	52	52	57.1
120	Kowloon City - Oi Man	32	31	57.1
123	Central & Western - Centre Street	33	32	57.2
124	Kowloon City - Ho Man Tin	80	80	57.3
125	Yuen Long - Shap Pat Heung Central	45	45	57.5
126	Eastern - City Garden	39	39	57.6
126	Southern - Chi Fu	73	72	57.6
126	Tai Po - Old Market & Serenity	46	46	57.6
129	Tuen Mun - Tuen Mun Town Centre	50	50	57.7
130	Eastern - Nam Fung	60	60	57.8
130	Tuen Mun - Siu Hei	40	39	57.8
132	Kwun Tong - To Tai	73	72	57.9
133	Kwai Tsing - Tsing Yi Estate	52	52	58.1
134	Yuen Long - Kingswood South	51	50	58.2
135	Sham Shui Po - Lai Chi Kok Central	59	59	58.3
136	Wong Tai Sin - Chi Choi	58	58	58.4
136	Sha Tin - On Tai	34	34	58.4
138	Southern - South Horizons East	42	41	58.5
139	Tuen Mun - Siu Tsui	57	56	58.6
139	Islands - Tung Chung South	58	56	58.6
139	Southern - Wong Chuk Hang	32	31	58.6
142	Sha Tin - Wu Kai Sha	82	82	58.7
142	Sha Tin - Kam To	50	50	58.7
144	Wan Chai - Victoria Park	32	32	59.0
144	North - Wah Do	32	31	59.0
144	North - Tin Ping East	33	32	59.0
144	Kwai Tsing - Wah Lai	46	46	59.0
148	Sha Tin - Heng On	33	33	59.1
149	Sham Shui Po - Lai Chi Kok South	30	30	59.2
149	Sai Kung - O Tong	69	69	59.2
151	Tuen Mun - Fu Tai	34	33	59.3
152	Sha Tin - Tai Wai	55	54	59.5
153	Kwai Tsing - Lai Wah	40	40	59.6
153	Eastern - Fullview	37	37	59.6
155	Central & Western - Kwun Lung	57	57	59.7
155	Sha Tin - Yu Yan	66	64	59.7
157	Sham Shui Po - Mei Foo Central	50	49	60.0
157	Tuen Mun - Tsui Hing	58	58	60.0
159	Sha Tin - Yue Shing	64	64	60.1

Rank	Constituency	Number of respondents	Valid samples	Mean (pieces)
159	Wong Tai Sin - Lung Sing	77	75	60.1
159	Sham Shui Po - Yau Yat Tsuen	46	45	60.2
162	Tuen Mun - Prime View	67	67	60.3
162	Tuen Mun - Siu Hong	46	46	60.3
164	Sha Tin - Sha Tin Town Centre	68	67	60.4
164	Central & Western - Castle Road	30	30	60.4
164	Central & Western - Sheung Wan	33	32	60.4
167	Sham Shui Po - Lei Cheng Uk	31	30	60.5
168	Tuen Mun - Tuen Mun Rural	37	37	60.6
168	Yau Tsim Mong - East Tsim Sha Tsui & King's Park	34	34	60.6
170	Islands - Tung Chung Central	34	33	60.7
170	Sha Tin - Hoi Nam	42	42	60.7
172	Eastern - Kornhill Garden	38	38	61.1
173	Kwun Tong - Hong Lok	34	33	61.2
173	Eastern - Braemar Hill	59	58	61.2
173	Sha Tin - Kam Ying	45	44	61.2
173	Sham Shui Po - Mei Foo South	70	69	61.2
173	Southern - Ap Lei Chau North	48	48	61.2
178	Eastern - Tanner	41	41	61.4
179	Kowloon City - Ka Wai	43	42	61.6
180	Yau Tsim Mong - Tai Kok Tsui North	47	46	61.7
181	Yau Tsim Mong - Mong Kok East	41	41	61.8
181	Sai Kung - Yan Ying	56	54	61.8
183	Eastern - Provident	51	50	61.9
183	Sha Tin - Pok Hong	32	31	61.9
185	Yuen Long - Pat Heung South	43	43	62.0
185	Kwai Tsing - Greenfield	73	71	62.0
187	Kowloon City - Ma Hang Chung	45	45	62.1
188	Sha Tin - City One	82	81	62.2
188	Eastern - Aldrich Bay	32	32	62.2
188	Tsuen Wan - Hoi Bun	76	74	62.2
191	Kowloon City - Oi Chun	43	41	62.6
192	Sai Kung - Choi Kin	31	31	62.8
192	Yuen Long - Yuen Long Tung Tau	39	38	62.8
194	Sai Kung - Kwong Ming	43	42	62.9
194	Yuen Long - Yuen Lung	53	52	62.9
196	Sai Kung - Nam On	59	59	63.0
196	Eastern - Kam Ping	42	41	63.0
198	Wong Tai Sin - Tung Tau	36	36	63.1
198	Sha Tin - Bik Woo	44	44	63.1

Rank	Constituency	Number of respondents	Valid samples	Mean (pieces)
200	Eastern - Fortress Hill	61	61	63.3
201	North - Shek Wu Hui	30	30	63.5
202	Kowloon City - Kowloon Tong	42	42	63.6
203	Sha Tin - Sui Wo	62	62	63.9
203	Tsuen Wan - Ma Wan	55	54	63.9
205	Tuen Mun - Siu Chi	65	63	64.0
206	Yuen Long - Ping Shan South	50	50	64.2
206	Central & Western - Tung Wah	37	37	64.2
206	Tsuen Wan - Tsuen Wan Rural	70	69	64.2
209	Tsuen Wan - Tsuen Wan South	56	56	64.5
210	Wong Tai Sin - Fung Wong	37	37	64.8
211	Central & Western - Kennedy Town & Mount Davis	32	32	64.9
212	Sai Kung - Po Lam	40	40	65.5
213	Tsuen Wan - Lai To	51	51	65.6
213	Kowloon City - Whampoa West	66	64	65.6
215	Eastern - Sai Wan Ho	55	54	65.9
216	Sha Tin - Hin Ka	32	32	66.0
217	Sai Kung - Po Yee	40	40	66.3
218	North - Luen Wo Hui	40	40	66.5
219	Sha Tin - Yiu On	37	36	66.8
220	Eastern - Tsui Tak	35	34	67.0
220	Central & Western - Shek Tong Tsui	36	35	67.1
222	Eastern - Hing Tung	35	34	67.2
222	Eastern - Fort Street	47	47	67.2
224	Kwai Tsing - Cheung Ching	30	30	67.5
225	Yau Tsim Mong - Tai Nan	30	30	67.6
226	Sai Kung - Hong King	33	33	68.5
227	Wan Chai - Tin Hau	30	30	68.9
228	Wong Tai Sin - Ching Oi	39	39	69.0
229	Yuen Long - Fung Cheung	58	57	69.1
230	Sham Shui Po - Po Lai	32	32	69.5
231	Central & Western - Mid Levels East	31	30	70.2
232	Sham Shui Po - Mei Foo North	66	66	70.5
233	Tai Po - Tai Wo	39	39	70.9
234	Wong Tai Sin - Lung Tsui	31	31	71.4
234	Tsuen Wan - Ting Sham	59	58	71.4
236	Kwun Tong - Sheung Shun	31	31	71.7
237	Tsuen Wan - Tsuen Wan West	69	68	71.8
238	Kwai Tsing - Kwai Fong	32	32	71.9
239	Tsuen Wan - Tsuen Wan Centre	34	34	72.0

Rank	Constituency	Number of respondents	Valid samples	Mean (pieces)
240	Eastern - Kornhill	64	64	72.3
241	Tuen Mun - Kin Sang	32	31	72.4
242	Yau Tsim Mong - Olympic	45	44	72.5
243	Tuen Mun - Shan King	33	33	73.9
244	Sai Kung - Hoi Chun	53	53	74.9
245	Central & Western - Sai Wan	31	30	76.0
246	Kwai Tsing - Cheung Hong	37	37	77.7
247	Sha Tin - Wo Che Estate	32	30	77.8
248	Sai Kung - Sheung Tak	36	36	79.6
249	Eastern - Quarry Bay	41	41	82.0
Inadequate subsample size	Yuen Long - Hung Fuk	9	9	31.5
Inadequate subsample size	Kwai Tsing - Tai Pak Tin East	15	15	31.9
Inadequate subsample size	Kwai Tsing - Lower Tai Wo Hau	11	11	33.5
Inadequate subsample size	Southern - Ap Lei Chau Estate	17	17	34.3
Inadequate subsample size	Islands - Lamma & Po Toi	15	15	34.6
Inadequate subsample size	Eastern - Siu Sai Wan	26	24	35.4
Inadequate subsample size	Islands - Lantau	19	19	35.6
Inadequate subsample size	Southern - Bays Area	6	6	35.8
Inadequate subsample size	Sham Shui Po - So Uk	13	13	36.6
Inadequate subsample size	Tai Po - Tai Po Hui	21	21	37.0
Inadequate subsample size	Kowloon City - Kai Tak East	11	11	37.2
Inadequate subsample size	Tsuen Wan - Lei Muk Shue East	26	26	37.8
Inadequate subsample size	Islands - Yat Tung Estate North	20	20	38.2
Inadequate subsample size	Yau Tsim Mong - Tsim Sha Tsui Central	23	22	38.7
Inadequate subsample size	Kowloon City - To Kwa Wan North	16	16	39.1
Inadequate subsample size	Kwun Tong - Po Tat	16	16	39.2
Inadequate subsample size	Kwai Tsing - Shek Yam	22	22	39.5
Inadequate subsample size	Central & Western - Peak	18	18	39.6
Inadequate subsample size	Yuen Long - Pat Heung North	23	23	39.7

Rank	Constituency	Number of respondents	Valid samples	Mean (pieces)
Inadequate subsample size	Yau Tsim Mong - Mong Kok West	16	16	40.8
Inadequate subsample size	North - Sha Ta	19	19	41.9
Inadequate subsample size	Kwun Tong - Sau Mau Ping North	22	22	42.2
Inadequate subsample size	North - Choi Yuen	28	28	43.0
Inadequate subsample size	Sham Shui Po - Nam Shan, Tai Hang Tung & Tai Hang Sai	23	21	43.1
Inadequate subsample size	Yuen Long - Nam Ping	24	22	43.2
Inadequate subsample size	Tuen Mun - Yuet Wu	23	22	43.5
Inadequate subsample size	Sai Kung - Kin Ming	15	15	43.7
Inadequate subsample size	Kowloon City - Lung Shing	21	20	43.8
Inadequate subsample size	Wong Tai Sin - Choi Wan South	19	19	44.1
Inadequate subsample size	Kwun Tong - Shun Tin	20	20	44.2
Inadequate subsample size	Tsuen Wan - Clague Garden	26	26	44.3
Inadequate subsample size	Yau Tsim Mong - Jordan North	4	3	44.5
Inadequate subsample size	Kwun Tong - Ping Shek	17	17	44.8
Inadequate subsample size	Yuen Long - Tin Yiu	20	20	44.9
Inadequate subsample size	Tuen Mun - Lung Mun	25	25	45.2
Inadequate subsample size	Kwun Tong - Lok Wah South	20	19	45.3
Inadequate subsample size	Kwai Tsing - Tai Pak Tin West	14	14	45.5
Inadequate subsample size	Wong Tai Sin - Tsz Wan West	21	21	45.5
Inadequate subsample size	Kwai Tsing - Shing Hong	20	20	45.6
Inadequate subsample size	Kwun Tong - Yau Tong East	20	20	45.6
Inadequate subsample size	North - Sheung Shui Rural	26	24	45.7
Inadequate subsample size	Eastern - Upper Yiu Tung	22	21	46.2
Inadequate subsample size	North - Cheung Wah	24	24	46.4
Inadequate subsample size	Wong Tai Sin - Choi Hung	20	19	47.0
Inadequate	Kowloon City - Sheung Lok	27	27	47.0

Rank	Constituency	Number of respondents	Valid samples	Mean (pieces)
subsample size				
Inadequate subsample size	Kwai Tsing - On Yam	18	18	47.0
Inadequate subsample size	Kwun Tong - Choi Tak	8	7	47.3
Inadequate subsample size	Wan Chai - Tai Fat Hau	26	26	47.5
Inadequate subsample size	Islands - Peng Chau & Hei Ling Chau	16	16	47.5
Inadequate subsample size	Yuen Long - Chung Pak	15	15	47.8
Inadequate subsample size	Sham Shui Po - Shek Kip Mei	20	20	48.1
Inadequate subsample size	Kwun Tong - Lok Wah North	13	13	48.5
Inadequate subsample size	Yau Tsim Mong - Mong Kok South	19	19	48.5
Inadequate subsample size	Tuen Mun - King Hing	12	12	48.6
Inadequate subsample size	Yau Tsim Mong - Tsim Sha Tsui West	17	17	48.6
Inadequate subsample size	Yuen Long - Shap Pat Heung North	14	14	48.7
Inadequate subsample size	Tuen Mun - Leung King	22	22	48.8
Inadequate subsample size	Eastern - Hing Man	21	21	49.0
Inadequate subsample size	Tuen Mun - Yau Oi North	23	23	49.0
Inadequate subsample size	Tsuen Wan - Lei Muk Shue West	17	17	49.3
Inadequate subsample size	Kwai Tsing - Shek Lei North	13	13	49.3
Inadequate subsample size	Wong Tai Sin - Chuk Yuen South	12	12	49.4
Inadequate subsample size	Sham Shui Po - Pik Wui	28	28	49.6
Inadequate subsample size	Yuen Long - Ha Tsuen	26	25	49.7
Inadequate subsample size	Sha Tin - Shui Chuen O	11	10	50.1
Inadequate subsample size	Wong Tai Sin - Tung Mei	26	24	50.1
Inadequate subsample size	Yau Tsim Mong - Cherry	25	25	50.2
Inadequate subsample size	Wan Chai - Southorn	24	24	50.3
Inadequate subsample size	Islands - Mun Yat	19	19	50.4
Inadequate subsample size	Sha Tin - Tin Sum	22	22	50.4

Rank	Constituency	Number of respondents	Valid samples	Mean (pieces)
Inadequate subsample size	Sham Shui Po - Lai Kok	18	18	50.4
Inadequate subsample size	Yuen Long - Tin Heng	20	20	50.7
Inadequate subsample size	Yuen Long - Yuet Yan	17	16	50.8
Inadequate subsample size	Yuen Long - Yat Chak	11	11	50.8
Inadequate subsample size	Sham Shui Po - Fu Cheong	21	21	51.1
Inadequate subsample size	Wan Chai - Hennessy	15	15	51.3
Inadequate subsample size	North - Shing Fuk	28	28	51.3
Inadequate subsample size	Kwun Tong - Chun Cheung	19	18	51.5
Inadequate subsample size	North - Fung Tsui	20	20	51.6
Inadequate subsample size	Yuen Long - Tsz Yau	24	24	52.1
Inadequate subsample size	Yuen Long - Wang Yat	24	24	53.2
Inadequate subsample size	Sha Tin - Sha Kok	26	26	53.2
Inadequate subsample size	Yau Tsim Mong - Mong Kok North	22	22	53.3
Inadequate subsample size	Kwun Tong - Tsui Ping	29	29	53.3
Inadequate subsample size	Sai Kung - Sai Kung Central	29	28	53.3
Inadequate subsample size	Eastern - Wan Tsui	24	24	53.4
Inadequate subsample size	Yuen Long - Yuen Long Centre	16	16	53.5
Inadequate subsample size	Kwun Tong - Kwun Tong Central	24	24	53.5
Inadequate subsample size	Kwai Tsing - Lai King	27	27	53.6
Inadequate subsample size	Yuen Long - Tin Shing	30	29	53.7
Inadequate subsample size	Yau Tsim Mong - Tai Kok Tsui South	17	17	53.8
Inadequate subsample size	Sham Shui Po - Lung Ping & Sheung Pak Tin	27	27	54.0
Inadequate subsample size	Kowloon City - Kai Tak Central & South	19	19	54.1
Inadequate subsample size	Southern - Wah Fu South	21	20	54.3
Inadequate subsample size	Kwun Tong - Upper Ngau Tau Kok Estate	16	16	54.6
Inadequate	Kwun Tong - Hip Hong	18	18	54.7

Rank	Constituency	Number of respondents	Valid samples	Mean (pieces)
subsample size				
Inadequate subsample size	North - Wah Ming	24	24	54.8
Inadequate subsample size	Wong Tai Sin - Ching On	23	23	54.8
Inadequate subsample size	Eastern - Yue Wan	22	22	54.8
Inadequate subsample size	North - Yu Tai	27	27	55.0
Inadequate subsample size	Kwai Tsing - Kwai Hing	25	25	55.3
Inadequate subsample size	Tsuen Wan - Shek Wai Kok	14	13	55.4
Inadequate subsample size	Kwai Tsing - Kwai Shing East Estate	20	20	55.9
Inadequate subsample size	Kwun Tong - Yau Chui	23	23	56.0
Inadequate subsample size	Yau Tsim Mong - Jordan West	21	20	56.7
Inadequate subsample size	Sham Shui Po - Nam Cheong East	23	22	56.9
Inadequate subsample size	Kowloon City - To Kwa Wan South	23	22	56.9
Inadequate subsample size	Tsuen Wan - Tak Wah	22	22	57.0
Inadequate subsample size	Sham Shui Po - Nam Cheong West	24	24	57.1
Inadequate subsample size	Southern - Lei Tung I	29	29	57.1
Inadequate subsample size	Eastern - Lower Yiu Tung	25	23	57.2
Inadequate subsample size	Sha Tin - Kwong Hong	25	24	57.6
Inadequate subsample size	Tai Po - Wan Tau Tong	28	28	57.6
Inadequate subsample size	Kwai Tsing - Shek Lei South	26	26	57.8
Inadequate subsample size	Yau Tsim Mong - Yau Ma Tei North	27	26	57.9
Inadequate subsample size	Kwai Tsing - Cheung Hang	17	16	58.2
Inadequate subsample size	Sai Kung - King Lam	29	29	58.4
Inadequate subsample size	Tai Po - Kwong Fuk & Plover Cove	25	24	58.5
Inadequate subsample size	North - Fanling Town	25	25	58.7
Inadequate subsample size	Tuen Mun - Hing Tsak	23	23	58.8
Inadequate subsample size	Kowloon City - Lok Man	24	23	58.8

Rank	Constituency	Number of respondents	Valid samples	Mean (pieces)
Inadequate subsample size	Southern - Shek Yue	20	20	59.0
Inadequate subsample size	Tai Po - Tai Yuen	20	19	59.2
Inadequate subsample size	Sham Shui Po - Nam Cheong Central	9	9	59.3
Inadequate subsample size	Sha Tin - Sun Tin Wai	29	29	59.4
Inadequate subsample size	Yuen Long - Shap Pat Heung East	18	18	59.5
Inadequate subsample size	Kwun Tong - Po Lok	19	17	59.5
Inadequate subsample size	Kwai Tsing - Kwai Chung Estate South	21	21	59.9
Inadequate subsample size	Yuen Long - Ching King	22	22	60.0
Inadequate subsample size	Kwai Tsing - Hing Fong	31	29	60.1
Inadequate subsample size	Kowloon City - Ma Tau Kok	23	23	60.3
Inadequate subsample size	Kwai Tsing - Kwai Luen	22	22	60.4
Inadequate subsample size	Eastern - Healthy Village	30	29	60.7
Inadequate subsample size	Tsuen Wan - Cheung Shek	20	20	61.1
Inadequate subsample size	Sha Tin - Jat Chuen	20	20	61.1
Inadequate subsample size	Yuen Long - Chung Wah	20	20	61.3
Inadequate subsample size	Tuen Mun - So Kwun Wat	18	18	61.4
Inadequate subsample size	Wong Tai Sin - Tsz Wan East	29	27	61.6
Inadequate subsample size	Kwun Tong - Jordan Valley	20	19	61.8
Inadequate subsample size	Kwun Tong - Sau Mau Ping South	13	12	61.9
Inadequate subsample size	Wong Tai Sin - Choi Wan West	17	17	61.9
Inadequate subsample size	Wong Tai Sin - Chuk Yuen North	28	28	61.9
Inadequate subsample size	Tuen Mun - Yau Oi South	24	24	62.0
Inadequate subsample size	Kwai Tsing - Kwai Shing West Estate	24	24	62.0
Inadequate subsample size	Kwun Tong - Yau Tong West	25	25	62.1
Inadequate subsample size	Wan Chai - Tai Hang	31	29	62.2
Inadequate	Yau Tsim Mong - Jordan South	25	24	62.3

Rank	Constituency	Number of respondents	Valid samples	Mean (pieces)
subsample size				
Inadequate subsample size	Kwun Tong - Yau Lai	16	15	62.4
Inadequate subsample size	Tuen Mun - Yan Tin	10	9	62.5
Inadequate subsample size	Kwai Tsing - Upper Tai Wo Hau	14	14	62.6
Inadequate subsample size	Yau Tsim Mong - Kowloon Station	22	22	62.6
Inadequate subsample size	Kowloon City - Kai Tak North	18	18	62.7
Inadequate subsample size	Kwun Tong - On Lee	14	14	62.8
Inadequate subsample size	Tuen Mun - Tin King	23	22	62.8
Inadequate subsample size	Wan Chai - Stubbs Road	16	16	62.9
Inadequate subsample size	Tuen Mun - Butterfly	28	27	63.2
Inadequate subsample size	Eastern - Mount Parker	24	24	63.2
Inadequate subsample size	Yuen Long - Fung Nin	25	25	63.5
Inadequate subsample size	Sham Shui Po - Ha Pak Tin	23	23	63.5
Inadequate subsample size	Southern - Wah Fu North	19	18	63.8
Inadequate subsample size	Yuen Long - Pek Long	23	23	64.2
Inadequate subsample size	Southern - Lei Tung II	20	20	64.3
Inadequate subsample size	Tuen Mun - On Ting	21	21	64.5
Inadequate subsample size	Eastern - Kai Hiu	19	19	64.7
Inadequate subsample size	Wan Chai - Broadwood	23	23	64.9
Inadequate subsample size	Sham Shui Po - Un Chau	29	28	65.1
Inadequate subsample size	Sha Tin - Kwong Yuen	25	25	65.2
Inadequate subsample size	Kwun Tong - Sau Mau Ping Central	16	16	65.4
Inadequate subsample size	Kwun Tong - Ting On	15	15	66.0
Inadequate subsample size	Wong Tai Sin - Choi Wan East	26	26	66.0
Inadequate subsample size	Central & Western - Chung Wan	23	23	66.5
Inadequate subsample size	Yuen Long - Ping Shan North	27	27	66.8

Rank	Constituency	Number of respondents	Valid samples	Mean (pieces)
Inadequate subsample size	Tuen Mun - San King	31	29	67.2
Inadequate subsample size	Sham Shui Po - Nam Cheong North	15	15	67.2
Inadequate subsample size	Yuen Long - Yiu Yau	23	23	67.6
Inadequate subsample size	Eastern - Fei Tsui	18	18	67.8
Inadequate subsample size	Kwun Tong - Kwun Tong On Tai	14	14	68.5
Inadequate subsample size	Tuen Mun - Sam Shing	20	20	68.6
Inadequate subsample size	Yuen Long - San Tin	15	14	69.5
Inadequate subsample size	Yuen Long - Ping Shan Central	24	24	69.5
Inadequate subsample size	Kwun Tong - Kwong Tak	29	28	70.0
Inadequate subsample size	Kwun Tong - Hing Tin	28	28	70.1
Inadequate subsample size	Tsuen Wan - Fuk Loi	17	17	70.5
Inadequate subsample size	Yuen Long - Fu Yan	28	27	71.2
Inadequate subsample size	Wan Chai - Jardine's Lookout	20	20	71.4
Inadequate subsample size	Wan Chai - Canal Road	24	24	72.0
Inadequate subsample size	Eastern - Tsui Wan	26	26	72.6
Inadequate subsample size	Kwun Tong - On Tat	14	14	73.1
Inadequate subsample size	Kwai Tsing - Kwai Chung Estate North	16	16	73.1
Inadequate subsample size	Sha Tin - Lek Yuen	21	21	74.2
Inadequate subsample size	Kowloon City - Hung Hom	14	14	75.1
Inadequate subsample size	Wong Tai Sin - Wang Tau Hom	23	23	75.8
Inadequate subsample size	Tuen Mun - Wu King	18	18	77.2
Inadequate subsample size	Yuen Long - Shing Yan	30	28	77.7
Inadequate subsample size	Tai Po - Fu Heng	30	29	79.0
Inadequate subsample size	Yuen Long - Shui Wah	24	24	81.0
Inadequate subsample size	Sai Kung - Tsui Lam	30	29	81.1
Inadequate	North - Ching Ho	13	13	81.7

Rank	Constituency	Number of respondents	Valid samples	Mean (pieces)
subsample size				
Inadequate subsample size	Yuen Long - Shui Oi	14	14	82.4
Inadequate subsample size	Tuen Mun - Po Tin	2	2	82.5
Inadequate subsample size	Kwun Tong - Kai Yip	27	27	87.1
Inadequate subsample size	Sham Shui Po - Fortune	16	16	88.6
Inadequate subsample size	North - Tin Ping West	26	24	90.0