



HONG KONG PUBLIC OPINION RESEARCH INSTITUTE  
香港民意研究所

---

## Hong Kong Public Opinion Program of Hong Kong Public Opinion Research Institute

---

### “Community Health Information System” Report No. 5

---

**Data Period: April 9 to 24, 2020**

**Release Date: April 27, 2020**

Copyright of this report was generated by the Hong Kong Public Opinion Program (HKPOP) and opened to the world. HKPOP proactively promotes open data, open technology and the free flow of ideas, knowledge and information. The predecessor of HKPOP was the Public Opinion Programme at The University of Hong Kong (HKUPOP). “HKPOP” or “POP” in this publication may refer to HKPOP or HKUPOP as the case may be.

# Table of Contents

	Page
<b>Survey Report</b>	
<b>Research Background</b> .....	2
<b>Data Coverage Periods</b> .....	2
<b>Contact Information</b> .....	4
<b>Explanation of Data Analysis</b> .....	4
<b>Survey Results</b> .....	5
<b>Part One      Mask Reserve</b> .....	5
<b>Part Two      Online Screen Captures of CHIS</b> .....	11
<b>Appendix 1    Supplementary Information on CHIS Interval Values</b> .....	13
<b>Appendix 2    Mask Reserve by Constituency</b> .....	15
<b>Appendix 3    Mask Usage by Constituency</b> .....	34
<b>Appendix 4    Number of Masks by Constituency</b> .....	53

## Research Background

In view of the outbreak of Novel Coronavirus (also known as "Wuhan Pneumonia") in late January 2020, the Hong Kong Public Opinion Program (HKPOP) under the Hong Kong Public Opinion Research Institute (HKPORI) kick-started the "Community Democracy Project: Community Health Module" or "Community Health Project" using a PopPanel survey design to study the public's views on the epidemic and the Government's relevant policies using small communities such as housing estates as the unit of analysis. The study covers people's views on their perceived chance of contracting pneumonia, appraisal on the government's handling of the disease, impacts of border closure, calls for strike by frontline medical staff, community outbreak, home-working conditions and their general use of face masks. The special feature of the Community Health Project is the lowering of respondents' age bracket to 12 years old, in order to obtain more comprehensive samples.

As the epidemic developed, on February 2, 2020, HKPOP engaged Professor P.C. Lai from the Department of Geography at The University of Hong Kong and Professor Paulina Wong from the Science Unit at Lingnan University to build the "**Community Health Information System**" (CHIS) to present survey data and relevant information using a geographic information systems (GIS) down to different community levels. Survey data, like peoples' possession of protective masks, their need for anti-epidemic commodities and so on, is processed using a 15-day rolling method to begin with, and presented alongside with other health and geographical information. HKPOP started to collect and collate CHIS survey data via its online survey platforms on February 2, 2020 and then displayed them on a GIS map accessible via its website at <http://www.pori.hk/> starting from February 18. While this map is updated almost every working day, HKPOP still compiles written CHIS Reports every now and then as snapshots of CHIS findings. As of this date, five CHIS Reports including this one have been compiled.

CHIS Reports No. 1, 2, 3 and 4 were released on March 3, 6, 13 and 20 respectively, and this CHIS Report No. 5 is the fifth release. It is worth noting that the contents of these reports only cover the results of certain CHIS survey questions within certain survey periods, while the dynamic data displayed in the CHIS map is updated very frequently. The purpose of these reports is mainly for archiving snapshots taken at specific time. HKPOP will continue to compile CHIS reports on an irregular basis. Since mid-March, the CHIS map has also included the information of more than 160 District Council constituencies covered by the "Community Democracy" Project of HKPOP.

## Data Coverage Periods

While this CHIS map is updated almost every working day, five CHIS Reports including this one have been compiled as of this date. CHIS Report No. 1 took three snapshots of CHIS rolling data (spanning 15 continuous calendar days) and the data collection periods were February 2 to 17, February 5 to 20 and February 16 to March 2. In CHIS Report No. 2, one more set of rolling data covering February 19 to March 5 was added. The CHIS Report No. 3 covered the rolling data from February 26 to March 12, including two questions which were stopped on March 10. The CHIS Report No. 4 covered the rolling data from March 4 to 19. This CHIS Report No. 5 covers the rolling data of the last 15 days from April 9 to 24. For easy reference, Table 1 gives the data period of each question covered by CHIS up to this date, while Table 2 documents the upload time of our CHIS map up to this date, along with questions covered, their sample size in each update, as well as which CHIS print reports have carried the findings.

**Table 1 Data coverage period for CHIS survey questions**

Question	Wordings / Descriptions	Data coverage period	CHIS print report
Q1	How long can you rely on your current face mask reserve?	February 2, 1500 to April 24, 1500	No. 1, 2, 3, 4 & 5
Q2	How would you describe your usage of face mask? Please try to use past 7 days as your reference.	February 18, 1500 to April 24, 1500	No. 2, 3, 4 & 5
Q3	Which of the following anti-epidemic materials do you need most now?	February 4, 1500 to March 3, 1500	No. 1 & 2
Q4	How long can you rely on your current ethyl alcohol reserve?	February 18, 1500 to March 10, 1500	No. 3
Q5	How long can you rely on your current hand sanitizer reserve?	February 18, 1500 to March 10, 1500	No. 3
Q1*Q2	Number of masks available for use (computed using results of Q1 and Q2, not directly collected from survey)	February 18, 1500 to April 24, 1500	No. 3, 4 & 5

**Table 2 CHIS data release dates and data coverage periods**

CHIS website update	Questions shown on CHIS	Data coverage period of questions (normally last 15 days)	Sample size	Presented in reports
February 18, 1300	Q1	February 2, 1500 to February 17, 1500	21,337	No. 1 & 2
February 20, 0900	Q1, Q3	February 4, 1500 to February 19, 1500	22,959	
February 21, 0900	Q1, Q3	February 5, 1500 to February 20, 1500	20,495	No. 1 & 2
February 22, 0900	Q1, Q3	February 6, 1500 to February 21, 1500	21,592	
February 25, 0900	Q1, Q3	February 9, 1500 to February 24, 1500	21,912	
February 26, 0900	Q1, Q3	February 10, 1500 to February 25, 1500	21,992	
February 27, 0900	Q1, Q3	February 11, 1500 to February 26, 1500	22,880	
February 28, 0900	Q1, Q3	February 12, 1500 to February 27, 1500	21,900	
February 29, 0900	Q1, Q3	February 13, 1500 to February 28, 1500	19,417	
March 3, 0900	Q1, Q3	February 16, 1500 to March 2, 1500	17,547	No. 1 & 2
March 4, 0900	Q1, Q3	February 17, 1500 to March 3, 1500	17,468	
March 5, 0900	Q1, Q2, Q4, Q5	February 18, 1500 to March 4, 1500	18,957	
March 5, 2300	Q1, Q2, Q4, Q5	February 19, 1500 to March 5, 1500	17,609	No. 2
March 6, 2300	Q1, Q2, Q4, Q5	February 20, 1500 to March 6, 1500	17,481	
March 9, 2300	Q1, Q2, Q4, Q5	February 23, 1500 to March 9, 1500	15,174	
March 10, 2300	Q1, Q2	February 24, 1500 to March 10, 1500	15,083	
	Q4, Q5	February 24, 1500 to March 10, 1500	15,083	No. 3
March 11, 2300	Q1, Q2	February 25, 1500 to March 11, 1500	16,544	
	Q4, Q5	February 25, 1500 to March 10, 1500	12,267	
March 12, 2300	Q1, Q2	February 26, 1500 to March 12, 1500	15,685	No. 3
	Q4, Q5	February 26, 1500 to March 10, 1500	11,848	
March 13, 2300	Q1, Q2	February 27, 1500 to March 13, 1500	15,790	
	Q4, Q5	February 27, 1500 to March 10, 1500	11,795	
March 16, 2300	Q1, Q1*Q2	February 28, 1500 to March 16, 1500	15,899	
March 18, 2300	Q1, Q1*Q2	March 3, 1500 to March 18, 1500	17,299	
March 19, 2300	Q1, Q1*Q2	March 4, 1500 to March 19, 1500	15,758	No. 4
March 20, 1900	Q1, Q1*Q2	March 5, 1500 to March 20, 1500	16,544	
March 23, 1900	Q1, Q1*Q2	March 8, 1500 to March 23, 1500	16,733	
March 24, 1900	Q1, Q1*Q2	March 9, 1500 to March 24, 1500	16,773	
March 25, 1900	Q1, Q1*Q2	March 10, 1500 to March 25, 1500	17,917	
March 26, 1900	Q1, Q1*Q2	March 11, 1500 to March 26, 1500	16,324	
March 27, 1900	Q1, Q1*Q2	March 12, 1500 to March 27, 1500	15,774	
March 30, 1900	Q1, Q1*Q2	March 15, 1500 to March 30, 1500	15,436	
March 31, 1900	Q1, Q1*Q2	March 16, 1500 to March 31, 1500	15,415	

April 1, 1900	Q1, Q1*Q2	March 17, 1500 to April 1, 1500	16,554	
April 2, 1900	Q1, Q1*Q2	March 18, 1500 to April 2, 1500	15,079	
April 3, 1900	Q1, Q1*Q2	March 19, 1500 to April 3, 1500	14,880	
April 6, 1900	Q1, Q1*Q2	March 22, 1500 to April 6, 1500	13,261	
April 7, 1900	Q1, Q1*Q2	March 23, 1500 to April 7, 1500	13,220	
April 8, 1900	Q1, Q1*Q2	March 24, 1500 to April 8, 1500	14,998	
April 9, 1900	Q1, Q1*Q2	March 25, 1500 to April 9, 1500	13,821	
April 14, 1900	Q1, Q1*Q2	March 30, 1500 to April 14, 1500	13,668	
April 15, 1900	Q1, Q1*Q2	March 31, 1500 to April 15, 1500	13,667	
April 16, 1900	Q1, Q1*Q2	April 1, 1500 to April 16, 1500	11,318	
April 17, 1900	Q1, Q1*Q2	April 2, 1500 to April 17, 1500	10,745	
April 20, 1900	Q1, Q1*Q2	April 5, 1500 to April 20, 1500	10,334	
April 21, 1900	Q1, Q1*Q2	April 6, 1500 to April 21, 1500	12,525	
April 22, 1900	Q1, Q1*Q2	April 7, 1500 to April 22, 1500	13,183	
April 23, 1900	Q1, Q1*Q2	April 8, 1500 to April 23, 1500	10,880	
April 24, 1900	Q1, Q1*Q2	April 9, 1500 to April 24, 1500	10,439	No. 5

## Contact Information

**Table 3 Contact information:**

Survey method	Online Survey
Target population	HKPOP Panel samples, namely Hong Kong People Representative Panel (Probability-based Panel) and Hong Kong People Volunteer Panel (Non-probability-based Panel)
Data period	April 9, 1500 to April 24, 1500 (past 15 days)
Total sample size	10,439

## Explanation of Data Analysis

The CHIS data is processed and presented in the following manner:

1. The samples from "Hong Kong People Representative Panel" and "Hong Kong People Volunteer Panel" who responded to the question of "mask reserve" is first screened for the past 15 days;
2. Unlike other opinion questions, the data of the CHIS comes from all samples of the Hong Kong People Representative Panel and Hong Kong People Volunteer Panel within a certain survey period, and not adjusted by any weighting.
3. The question on "mask reserve" is processed as follows:
  - a. Calculate and pair up the mean values of "reserve" for individual constituency areas, then divide all values into 6 groups according to the natural breaks classification method of geographic information systems (GIS) designed for easy appreciation by the general public, with specific separation values and representations by different colors in the map, to reflect the relative scarcity and abundance of mask reserve in that area. The colors used for the six intervals are as follows:
    - First interval: red
    - Second interval: orange
    - Third interval: yellow
    - Fourth interval: green
    - Fifth interval: turquoise
    - Sixth interval: blue
  - b. If the valid sample from a certain constituency area is less than 30, the information is treated as "missing" and no colour pairing will be made or displayed.
4. For detailed interval values, please refer to Appendix 1.

## Survey Results

### Part One Mask Reserve

The CHIS has been tracking people's **mask reserve** ever since it was launched. As of 3pm of April 24, overall speaking, Hong Kong people's average mask reserve stands at 63.5 days (Table 4). Among 18 districts, Islands District has the smallest reserve (58.4 days) and Tsuen Wan District has the biggest reserve (66.2 days; Table 5).

In terms of 452 constituency areas, excluding those with valid samples of less than 30, the bottom five constituencies with the smallest amount of mask reserves, in a relative sense, are Yan Lam in Eastern District (52.9 days), Kadoorie in Kowloon City (53.5 days), Hiu Lai in Kwun Tong (54.3 days), Tai Wo in Tai Po (54.4 days) and Fairview Park in Yuen Long (54.9 days), while the top five constituencies with the biggest amount of mask reserves, in a relative sense, are Chun Ma in Sha Tin (75.4 days), Sui Wo in Sha Tin (74.7 days), O Tong in Sai Kung (74.4 days), Wan Po North in Sai Kung (74.4 days) and Lai To in Tsuen Wan (73.7 days). Please refer to Appendix 2 for details.

**Table 4 "How long can you rely on your current face mask reserve?" – overall results:**

	9-24/4/20	
	Frequency	Percentage (Base=10,426)
No reserve at all / already no mask	18	0.2%
1 – 2 day(s)	11	0.1%
3 – 4 days	19	0.2%
5 – 6 days	12	0.1%
1 week	100	1.0%
2 weeks	286	2.7%
3 weeks	383	3.7%
1 month	1,762	16.9%
1.5 months	1,384	13.3%
2 months	3,052	29.3%
3 months	1,801	17.3%
Over 3 months	1,538	14.8%
Don't know / hard to say	60	0.6%
Total	10,426	100.0%
Mean (days)*	63.5 days	
Standard error of the mean	0.31	
Median	60.0	
<i>Refuse to answer</i>	<i>13</i>	

\* Numeric conversion as follows: "No reserve at all / already no mask=0.0 days; 1–2 days=1.5 days; 3–4 days=3.5 days; 5–6 days=5.5 days; 1 week=7.0 days; 2 weeks=14.0 days; 3 weeks=21.0 days; 1 month=30.0 days; 1.5 months=45 days; 2 months=60 days; 3 months=90 days, over 3 months=120 days; don't know/hard to say are excluded."

**Table 5 "How long can you rely on your current face mask reserve?" – result by District Council**

Rank	District Council	Number of respondents	Valid samples #	Mean (days) *
1	Islands	193	190	58.4
2	Kowloon City	566	561	61.5
3	Sham Shui Po	533	530	61.5
4	Yuen Long	699	696	62.0
5	Kwai Tsing	596	591	62.7
6	Tuen Mun	707	700	62.8
7	Tai Po	503	496	63.1
7	Kwun Tong	773	767	63.1
9	Wong Tai Sin	541	534	63.2
10	North	355	352	63.4
10	Southern	419	417	63.4
12	Sha Tin	1,196	1,191	63.5
13	Central and Western	363	361	64.0
14	Yau Tsim Mong	395	394	64.1
15	Wan Chai	242	239	64.4
16	Eastern	962	960	64.9
17	Sai Kung	854	848	66.0
18	Tsuen Wan	542	539	66.2

# Excludes cases of "don't know / hard to say" and "refuse to answer"

\* Numeric conversion as follows: "No reserve at all / already no mask=0.0 days; 1-2 days=1.5 days; 3-4 days=3.5 days; 5-6 days=5.5 days; 1 week=7.0 days; 2 weeks=14.0 days; 3 weeks=21.0 days; 1 month=30.0 days; 1.5 months=45 days; 2 months=60 days; 3 months=90 days, over 3 months=120 days; don't know/hard to say are excluded."

Closely related to mask reserve, the CHIS has also been tracking people's mask usage. As of 3pm of April 24, overall speaking, Hong Kong people's average mask usage stands at 0.90 mask per day (Table 6). Among 18 districts, Wan Chai District has the lowest usage rate (0.84 per day) and Tuen Mun District has the highest usage rate (0.95 per day; Table 7).

In terms of 452 constituency areas, excluding those with valid samples of less than 30, the bottom five constituencies with the lowest mask usage rate, in a relative sense, are Kadoorie in Kowloon City (0.67 per day), Water Street in Central & Western District (0.68 per day), Lam Tsuen Valley in Tai Po (0.68 per day), Lee On in Sha Tin (0.71 per day) and Sai Kung North in Tai Po (0.73 per day), while the top five constituencies with the higher mask usage rate, in a relative sense, are Siu Chi in Tuen Mun (1.08 per day), Lai To in Tsuen Wan (1.07 per day), Tai Wo in Tai Po (1.06 per day), Hoi Nam in Sha Tin (1.05 per day) and Siu Hei in Tuen Mun (1.05 per day). Please refer to Appendix 3 for details.

**Table 6 "How would you describe your usage of face mask? Please try to use past 7 days as your reference." – overall result:**

	<u>9-24/4/20</u>	
	Frequency	Percentage (Base=10,421)
I do not use mask at all / already no mask to use	53	0.5%
1 mask for more than 3 days	769	7.4%
1 mask for 3 days	929	8.9%
1 mask for 2 days	2,004	19.2%
1 mask per day	5,680	54.5%
2 masks per day	752	7.2%
3 masks per day	112	1.1%
4 masks per day	42	0.4%
More than 4 masks per day	23	0.2%
Don't know / hard to say	57	0.5%
Total	10,421	100.0%
Mean*	0.90 mask per day	
Standard error of the mean	<0.01	
Median	1.00	
<i>Refuse to answer</i>	18	

\* Numeric conversion as follows: "I do not use mask at all / already no mask to use=0 masks/day; 1 per more than 3 days=1/4 masks/day; 1 per 3 days=1/3 masks/day; 1 per 2 days=1/2 masks/day; 1 per day=1 masks/day; 2 per day=2 masks/day; 3 per day=3 masks/day; 4 per day=4 masks/day; more than 4 per day=5 masks/day."



**Table 7 "How would you describe your usage of face mask? Please try to use past 7 days as your reference." – result by District Council**

Rank	District Council	Number of respondents	Valid samples #	Mean (mask/day) *
1	Wan Chai	242	238	0.84
1	Sham Shui Po	533	531	0.84
3	Islands	193	192	0.86
3	Central and Western	363	360	0.86
5	Kowloon City	566	564	0.87
5	Yau Tsim Mong	395	394	0.87
5	Southern	419	418	0.87
5	Eastern	962	953	0.87
9	Tai Po	503	499	0.88
10	Kwun Tong	773	768	0.89
11	Sha Tin	1,196	1,189	0.90
12	Sai Kung	854	848	0.91
12	North	355	355	0.91
12	Tsuen Wan	542	539	0.91
15	Yuen Long	699	693	0.93
16	Wong Tai Sin	541	533	0.94
17	Kwai Tsing	596	590	0.95
17	Tuen Mun	707	700	0.95

# Excludes cases of "refuse to answer"

\* Numeric conversion as follows: "I do not use mask at all / already no mask to use=0 masks/day; 1 per more than 3 days=1/4 masks/day; 1 per 3 days=1/3 masks/day; 1 per 2 days=1/2 masks/day; 1 per day=1 masks/day; 2 per day=2 masks/day; 3 per day=3 masks/day; 4 per day=4 masks/day; more than 4 per day=5 masks/day."

If we link up the number of days of people's mask reserve with their mask usage, we can then compute the "number of masks available for use". As of 3pm of April 24, Hong Kong people on average have 58.2 masks available for use in general (Table 8), with Islands District having the least (49.5 pieces) and Tsuen Wan District having the most (63.3 pieces) among 18 districts (Table 9).

In terms of 452 constituency areas, excluding those with valid samples of less than 30, the bottom five constituencies with the least masks available for use, in a relative sense, are Kadoorie in Kowloon City (37.3 pieces), Prince in Kowloon City (40.9 pieces), Fairview Park in Yuen Long (42.5 pieces), Sai Kung North in Tai Po (43.6 pieces) and Yan Lam in Eastern District (43.9 pieces), while the top five constituencies with the most masks available for use, in a relative sense, are Lai To in Tsuen Wan (76.9 pieces), Siu Tsui in Tuen Mun (76.1 pieces), Ma Hang Chung in Kowloon City (74.1 pieces), On Tai in Sha Tin (73.7 pieces) and Ting Sham in Tsuen Wan (73.2 pieces). Please refer to Appendix 4 for details.

**Table 8** "Number of masks available for use" – overall result

	9-24/4/20	
	Frequency	Percentage (Base=10,414)
0-14	1,006	9.7%
15-29	1,498	14.4%
30-44	2,074	19.9%
45-59	1,108	10.6%
60-89	1,966	18.9%
90-119	1,151	11.1%
120 or more	1,509	14.5%
Don't know / Hard to say	102	1.0%
Total	10,414	100.0%
Mean (pieces)	58.2	
Standard error of the mean	0.52	
Median	45.0	
<i>Refuse to answer</i>	25	

**Table 9 "Number of masks available for use" – result by District Council**

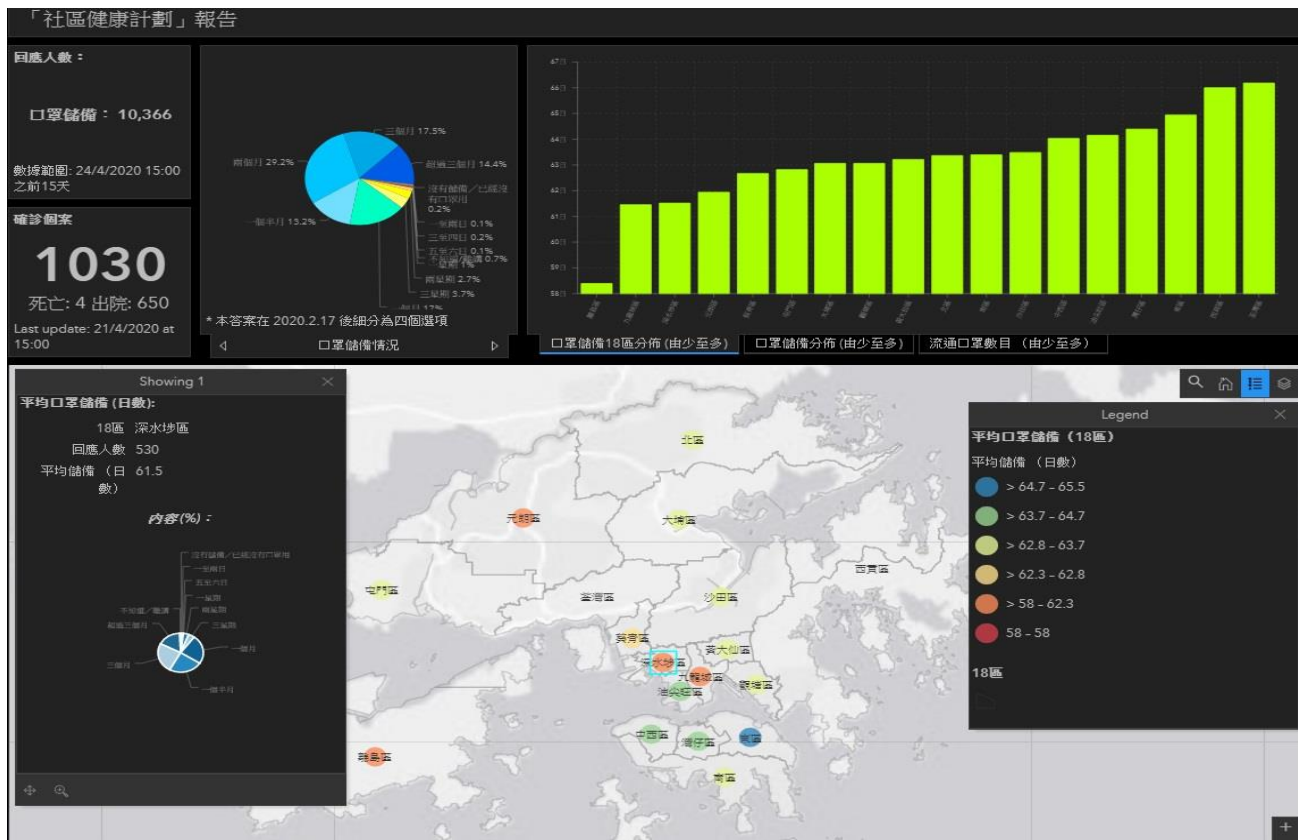
<b>Rank</b>	<b>District Council</b>	<b>Number of respondents</b>	<b>Valid samples #</b>	<b>Mean (mask)</b>
1	Islands	193	190	49.5
2	Sham Shui Po	533	529	52.8
3	Southern	419	416	55.2
4	Central and Western	363	359	55.6
5	Kowloon City	566	560	55.7
6	Wan Chai	242	237	56.4
7	Yau Tsim Mong	395	393	56.5
8	Tai Po	503	494	56.6
9	Yuen Long	699	690	57.9
9	Kwun Tong	773	763	57.9
11	Sha Tin	1,196	1,185	58.8
12	Kwai Tsing	596	586	59.0
13	Eastern	962	953	59.1
14	Sai Kung	854	843	59.6
15	Wong Tai Sin	541	531	60.7
15	North	355	352	60.7
17	Tuen Mun	707	694	61.0
18	Tsuen Wan	542	537	63.3

# Excludes cases of "refuse to answer"

**Part Two Online Screen Captures of CHIS**

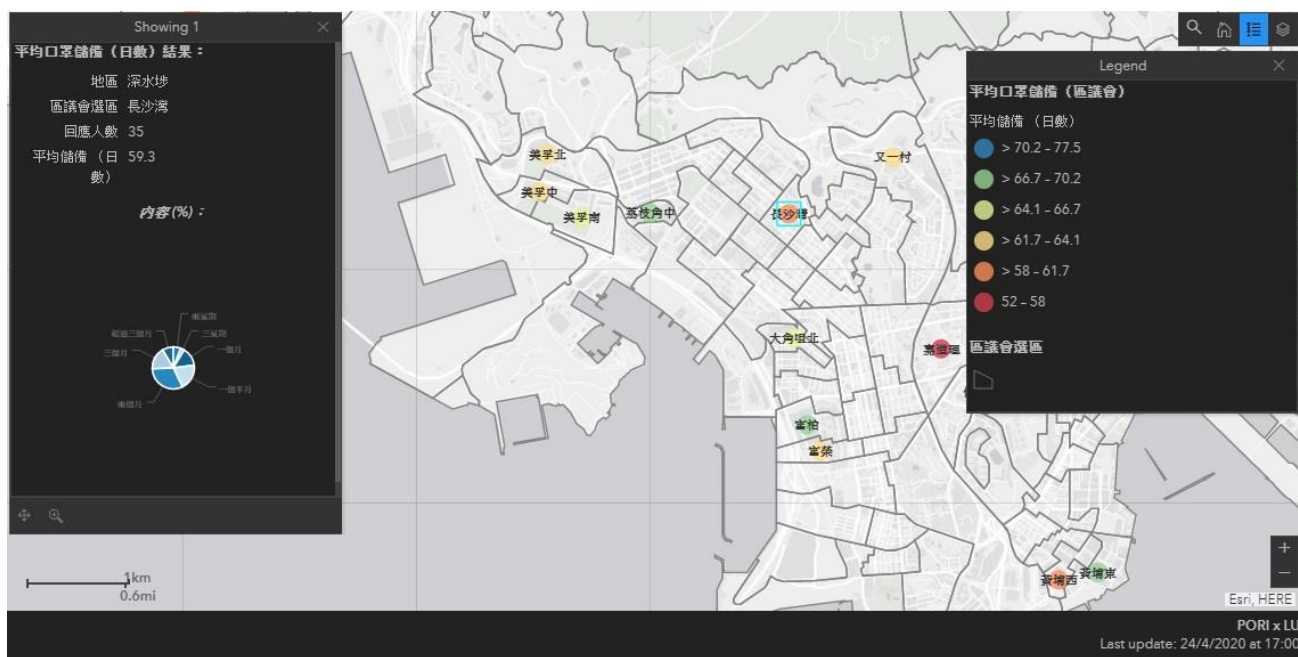
Below are some online screen captures of the CHIS map for illustration purpose:

**Screen Capture 1 Mask Reserve (18 districts, using Sham Shui Po as an example; data as of April 24, 1500) #**



# The CHIS map is temporarily available in Chinese only, the English version is under construction.

**Screen Capture 2 Mask Reserve (zoom in specific district, using Cheung Sha Wan, Sham Shui Po as an example; data as of April 24, 1500) #**



# The CHIS map is temporarily available in Chinese only, the English version is under construction.

# Appendices

## **Appendix 1**

### **Supplementary Information on CHIS Interval Values**

### Appendix 1: Supplementary information on CHIS interval values

Using the data as of April 24, 2020 at 1500, the Community Health Information System has generated the following interval values:

Mask reserve – by District Council:

Interval	Color	Value
First	Red	58.0
Second	Orange	>58.0 - 62.3
Third	Yellow	>62.3 - 62.8
Fourth	Green	>62.8 - 63.7
Fifth	Turquoise	>63.7 - 64.7
Sixth	Blue	>64.7 - 65.5

Mask reserve – by Constituency:

Interval	Color	Value
First	Red	52.0 - 58.0
Second	Orange	>58.0 - 61.7
Third	Yellow	>61.7 - 64.1
Fourth	Green	>64.1 - 66.7
Fifth	Turquoise	>66.7 - 70.2
Sixth	Blue	>70.2 - 77.5

## **Appendix 2**

### **Mask Reserve by Constituency**



**Appendix 2: CHIS result of each constituency -**

"How long can you rely on your current **face mask reserve**?" (Past 15 days data)

Rank	Constituency	Sample size	Valid sample size#	Average (days)*
1	Eastern - Yan Lam	33	33	52.9
2	Kowloon City - Kadoorie	47	47	53.5
3	Kwun Tong - Hiu Lai	34	34	54.3
4	Tai Po - Tai Wo	32	31	54.4
5	Yuen Long - Fairview Park	50	49	54.9
5	Yuen Long - Shui Pin	31	30	54.9
7	Sha Tin - Tai Wai	37	37	55.5
8	Kowloon City - Prince	32	31	55.9
9	Kowloon City - Ho Man Tin	46	46	57.0
10	Sha Tin - Chung On	33	33	57.9
11	Tuen Mun - Siu Chi	41	38	58.1
12	Tsuen Wan - Luk Yeung	39	38	58.7
12	Wong Tai Sin - Tin Keung	31	31	58.7
14	Eastern - Nam Fung	47	47	58.9
14	Kwai Tsing - Wai Ying	37	37	58.9
16	Tai Po - Shuen Wan	40	38	59.1
17	Sham Shui Po - Cheung Sha Wan	35	35	59.3
17	Sha Tin - City One	59	59	59.3
19	Eastern - Tai Koo Shing East	42	42	59.7
20	Eastern - Shau Kei Wan	34	34	59.9
21	Sai Kung - Fu Kwan	36	36	60.1
22	Kowloon City - Whampoa West	43	42	60.2
22	Southern - Chi Fu	48	48	60.3
24	Sha Tin - Hoi Nam	30	30	60.4
25	Wong Tai Sin - King Fu	47	47	60.7
26	Eastern - Tai Koo Shing West	41	41	60.9
26	Southern - Aberdeen	36	36	60.9
28	Tuen Mun - Hanford	38	38	61.0
29	Kwai Tsing - Greenfield	50	49	61.2
29	Tuen Mun - Prime View	40	40	61.2
31	Tuen Mun - Tuen Mun Town Centre	33	33	61.3
32	Sha Tin - Yu Yan	41	41	61.7
33	Tai Po - Tai Po Kau	33	33	61.8
34	Tai Po - Old Market & Serenity	42	42	61.9
35	Eastern - Heng Fa Chuen	63	63	62.1

Rank	Constituency	Sample size	Valid sample size#	Average (days)*
35	North - Fanling South	45	45	62.1
35	Sham Shui Po - Yau Yat Tsuen	33	33	62.1
38	Sai Kung - Yan Ying	38	38	62.3
39	Sai Kung - Nam On	39	38	62.4
40	Sha Tin - Di Yee	36	36	62.6
40	Sha Tin - Kam Ying	30	30	62.6
42	Yuen Long - Fung Cheung	34	34	62.8
43	Kowloon City - Ma Hang Chung	32	32	63.0
43	Islands - Tung Chung South	36	34	63.0
45	Sham Shui Po - Mei Foo North	43	43	63.1
46	Sha Tin - Sha Tin Town Centre	39	38	63.4
46	Yau Tsim Mong - Charming	30	30	63.4
48	Sha Tin - On Tai	33	33	63.5
49	Kwun Tong - Lam Tin	35	35	63.6
50	North - Yan Shing	33	32	63.7
50	Kwun Tong - King Tin	50	50	63.7
50	Sham Shui Po - Mei Foo Central	36	36	63.7
50	Tsuen Wan - Discovery Park	38	38	63.7
54	Sha Tin - Yue Shing	53	53	63.8
55	Sha Tin - Wong Uk	42	42	63.9
55	Kwun Tong - Laguna City	59	59	63.9
55	Sha Tin - Bik Woo	32	32	63.9
58	Southern - South Horizons West	38	37	64.0
58	Sai Kung - Wai King	56	55	64.0
58	Eastern - Fortress Hill	40	40	64.1
61	Sha Tin - Lee On	30	30	64.2
62	Kwai Tsing - Tsing Yi Estate	35	35	64.4
63	Tsuen Wan - Tsuen Wan South	30	30	64.9
64	Sai Kung - Hang Hau East	30	30	65.0
64	Yau Tsim Mong - Tai Kok Tsui North	31	31	65.0
64	Wong Tai Sin - Lung Sing	52	51	65.0
67	Sha Tin - Chun Fung	31	30	65.1
68	Kowloon City - Ma Tau Wai	32	32	65.2
69	Sai Kung - Wan Hang	35	35	65.3
70	Eastern - Braemar Hill	40	40	65.6
71	Tuen Mun - Fu Sun	33	33	65.7
71	Tai Po - Sai Kung North	33	33	65.7
71	Eastern - Provident	31	31	65.7
74	Tuen Mun - Siu Hei	30	30	65.9
74	Tsuen Wan - Tsuen Wan West	47	46	65.9

Rank	Constituency	Sample size	Valid sample size#	Average (days)*
76	Central & Western - Water Street	31	31	66.0
77	Tai Po - Lam Tsuen Valley	31	30	66.1
78	Wan Chai - Victoria Park	30	30	66.2
79	Sha Tin - Wu Kai Sha	59	59	66.4
80	Sham Shui Po - Mei Foo South	43	42	66.6
81	Sha Tin - Kam To	41	41	66.9
82	Kowloon City - Whampoa East	31	31	67.3
83	Southern - South Horizons East	40	40	67.5
84	Sham Shui Po - Lai Chi Kok Central	39	39	67.7
85	Sha Tin - Ma On Shan Town Centre	41	41	68.4
85	Tsuen Wan - Tsuen Wan Rural	54	54	68.4
85	Tsuen Wan - Ting Sham	43	43	68.4
88	Wong Tai Sin - Chi Choi	37	37	68.5
89	Tsuen Wan - Hoi Bun	46	46	68.6
90	Yau Tsim Mong - Fu Pak	30	30	68.7
90	Central & Western - University	44	43	68.7
92	Eastern - Lei King Wan	41	41	68.8
92	Yuen Long - Kingswood North	37	37	68.8
94	Tuen Mun - Tsui Hing	50	50	69.5
95	Kwun Tong - To Tai	46	46	70.4
96	Kwai Tsing - On Ho	35	34	71.0
97	Tsuen Wan - Ma Wan	32	32	71.2
98	Sai Kung - Kwong Ming	31	30	71.4
99	Tuen Mun - Siu Hong	31	31	71.5
100	Kwun Tong - Lai Ching	47	47	71.6
101	Eastern - Sai Wan Ho	36	35	71.7
101	Central & Western - Kwun Lung	32	32	71.7
103	Yuen Long - Kingswood South	35	35	71.8
104	Sha Tin - Yiu On	30	30	71.9
105	Sai Kung - Kwan Po	41	41	72.0
106	Sha Tin - Fo Tan	38	38	72.2
107	Eastern - Kornhill	39	39	72.7
108	Tuen Mun - Siu Tsui	38	37	72.9
109	Eastern - Kam Ping	34	34	73.3
110	Tsuen Wan - Lai To	30	30	73.7
111	Sai Kung - Wan Po North	48	48	74.4
111	Sai Kung - O Tong	40	40	74.4
113	Sha Tin - Sui Wo	49	49	74.7
114	Sha Tin - Chun Ma	42	42	75.4
Inadequate	North - Sha Ta	5	5	24.8

<b>Rank</b>	<b>Constituency</b>	<b>Sample size</b>	<b>Valid sample size#</b>	<b>Average (days)*</b>
subsample size				
Inadequate subsample size	Sha Tin - Lek Yuen	10	10	37.8
Inadequate subsample size	Tuen Mun - Yuet Wu	20	20	41.0
Inadequate subsample size	Sham Shui Po - Shek Kip Mei	14	14	41.5
Inadequate subsample size	Eastern - Upper Yiu Tung	10	10	41.8
Inadequate subsample size	Kowloon City - Kai Tak East	5	5	42.0
Inadequate subsample size	Islands - Yat Tung Estate North	9	9	42.2
Inadequate subsample size	Yuen Long - Wang Yat	7	7	42.4
Inadequate subsample size	Eastern - Yue Wan	14	14	42.5
Inadequate subsample size	Tuen Mun - King Hing	12	12	43.6
Inadequate subsample size	Sha Tin - Lower Shing Mun	20	20	43.6
Inadequate subsample size	Kwai Tsing - Kwai Hing	15	15	43.7
Inadequate subsample size	Yuen Long - Shap Pat Heung East	8	8	43.9
Inadequate subsample size	Eastern - Hing Man	11	11	44.2
Inadequate subsample size	Sham Shui Po - Lai Chi Kok North	19	19	44.2
Inadequate subsample size	Islands - Peng Chau & Hei Ling Chau	6	6	44.8
Inadequate subsample size	Kwun Tong - Kwun Tong On Tai	10	10	45.0
Inadequate subsample size	Yau Tsim Mong - Tai Kok Tsui South	10	10	46.0
Inadequate subsample size	Wong Tai Sin - Choi Wan South	12	12	46.3
Inadequate subsample size	Wong Tai Sin - Tsz Wan West	12	12	47.2
Inadequate subsample size	Tuen Mun - Leung King	11	11	48.3
Inadequate subsample size	Central & Western - Sai Ying Pun	27	27	48.3
Inadequate subsample size	Kwai Tsing - Shek Lei North	7	6	48.3
Inadequate subsample size	Sha Tin - Chung Tin	18	18	48.7
Inadequate subsample size	Tuen Mun - So Kwun Wat	14	13	48.7
Inadequate subsample size	North - Sheung Shui Rural	12	12	48.8

<b>Rank</b>	<b>Constituency</b>	<b>Sample size</b>	<b>Valid sample size#</b>	<b>Average (days)*</b>
Inadequate subsample size	Yuen Long - Ha Tsuen	13	13	49.4
Inadequate subsample size	Tuen Mun - Wu King	11	11	49.6
Inadequate subsample size	Yuen Long - Tsz Yau	12	12	50.5
Inadequate subsample size	Sai Kung - Kin Ming	9	8	50.5
Inadequate subsample size	Sham Shui Po - Fu Cheong	17	16	50.9
Inadequate subsample size	Islands - Lamma & Po Toi	13	13	51.1
Inadequate subsample size	Tuen Mun - Yau Oi South	14	14	51.1
Inadequate subsample size	Kwai Tsing - Upper Tai Wo Hau	12	12	51.3
Inadequate subsample size	Sha Tin - Heng On	19	19	51.5
Inadequate subsample size	Sha Tin - Tai Shui Hang	26	26	51.6
Inadequate subsample size	Kwun Tong - Pak Nga	21	21	52.0
Inadequate subsample size	Wong Tai Sin - Choi Hung	5	5	52.2
Inadequate subsample size	Kwai Tsing - Lower Tai Wo Hau	7	7	52.3
Inadequate subsample size	North - Shek Wu Hui	19	19	52.7
Inadequate subsample size	Kwun Tong - Ping Tin	25	25	52.9
Inadequate subsample size	Yuen Long - Chung Pak	9	9	53.0
Inadequate subsample size	Wong Tai Sin - Lung Sheung	19	19	53.2
Inadequate subsample size	Sham Shui Po - Lai Kok	11	11	53.2
Inadequate subsample size	Yuen Long - Tin Yiu	11	11	53.2
Inadequate subsample size	Sham Shui Po - Lai Chi Kok South	14	14	53.6
Inadequate subsample size	Kwun Tong - Yau Tong East	7	7	53.6
Inadequate subsample size	Kwai Tsing - On Yam	13	13	53.6
Inadequate subsample size	Sham Shui Po - So Uk	12	12	53.7
Inadequate subsample size	Sham Shui Po - Pik Wui	17	17	53.8
Inadequate subsample size	Yuen Long - Tin Heng	13	13	54.0
Inadequate	Kwai Tsing - Kwai Chung Estate	10	10	54.0

<b>Rank</b>	<b>Constituency</b>	<b>Sample size</b>	<b>Valid sample size#</b>	<b>Average (days)*</b>
subsample size	North			
Inadequate subsample size	Wong Tai Sin - Tsui Chuk & Pang Ching	19	19	54.3
Inadequate subsample size	Kowloon City - Sheung Lok	18	18	54.3
Inadequate subsample size	Kowloon City - To Kwa Wan North	7	7	54.4
Inadequate subsample size	Yuen Long - Pat Heung South	26	26	54.6
Inadequate subsample size	Central & Western - Centre Street	14	14	54.6
Inadequate subsample size	Kwun Tong - Sau Mau Ping North	20	20	54.7
Inadequate subsample size	Wan Chai - Oi Kwan	22	22	54.7
Inadequate subsample size	Wong Tai Sin - Tung Mei	20	18	54.8
Inadequate subsample size	Kowloon City - Sung Wong Toi	22	22	55.0
Inadequate subsample size	Sai Kung - Tak Ming	24	24	55.0
Inadequate subsample size	Kowloon City - Ma Tau Kok	14	14	55.3
Inadequate subsample size	North - Shing Fuk	19	19	55.3
Inadequate subsample size	Yau Tsim Mong - Mong Kok West	12	12	55.3
Inadequate subsample size	Yuen Long - Fu Yan	13	13	55.4
Inadequate subsample size	Wong Tai Sin - Ching On	10	10	55.5
Inadequate subsample size	Central & Western - Belcher	29	29	55.5
Inadequate subsample size	North - Queen's Hill	21	21	55.7
Inadequate subsample size	Tsuen Wan - Shek Wai Kok	8	7	55.7
Inadequate subsample size	Tsuen Wan - Lei Muk Shue East	13	13	55.8
Inadequate subsample size	Kwai Tsing - Lai Wah	27	27	55.8
Inadequate subsample size	Central & Western - Shek Tong Tsui	24	24	55.8
Inadequate subsample size	Eastern - Fullview	21	21	55.9
Inadequate subsample size	Kwun Tong - Yau Chui	17	17	56.0
Inadequate subsample size	North - Cheung Wah	20	20	56.1
Inadequate subsample size	Tuen Mun - Tuen Mun Rural	19	19	56.2

<b>Rank</b>	<b>Constituency</b>	<b>Sample size</b>	<b>Valid sample size#</b>	<b>Average (days)*</b>
Inadequate subsample size	Sai Kung - Sai Kung Central	18	18	56.2
Inadequate subsample size	Southern - Bays Area	4	4	56.3
Inadequate subsample size	Yuen Long - Hung Fuk	4	4	56.3
Inadequate subsample size	Wong Tai Sin - Lok Fu	19	19	56.3
Inadequate subsample size	Tuen Mun - San King	21	21	56.4
Inadequate subsample size	Kwai Tsing - Kwai Fong	12	12	56.8
Inadequate subsample size	Yau Tsim Mong - Jordan West	19	18	56.8
Inadequate subsample size	Tai Po - Yee Fu	24	24	56.8
Inadequate subsample size	Tuen Mun - Po Tin	5	5	57.0
Inadequate subsample size	Kwai Tsing - Cheung Hang	13	13	57.1
Inadequate subsample size	Kwun Tong - Ping Shek	12	12	57.3
Inadequate subsample size	Tai Po - Chung Ting	24	24	57.3
Inadequate subsample size	Wong Tai Sin - Fung Tak	19	18	57.4
Inadequate subsample size	Kwun Tong - Shun Tin	10	10	57.5
Inadequate subsample size	Kwun Tong - Lok Wah North	10	10	57.6
Inadequate subsample size	Eastern - Wan Tsui	17	17	57.7
Inadequate subsample size	Kowloon City - Lung Shing	15	15	57.8
Inadequate subsample size	Sham Shui Po - Nam Shan, Tai Hang Tung & Tai Hang Sai	13	13	57.9
Inadequate subsample size	Yuen Long - Shing Yan	12	12	58.0
Inadequate subsample size	Islands - Cheung Chau	20	20	58.0
Inadequate subsample size	Yau Tsim Mong - Yau Ma Tei North	18	18	58.2
Inadequate subsample size	Kwai Tsing - Ching Fat	18	18	58.3
Inadequate subsample size	Southern - Stanley & Shek O	24	24	58.4
Inadequate subsample size	Southern - Shek Yue	15	15	58.4
Inadequate subsample size	Wan Chai - Canal Road	10	10	58.5
Inadequate	Yuen Long - Chung Wah	6	6	58.5

<b>Rank</b>	<b>Constituency</b>	<b>Sample size</b>	<b>Valid sample size#</b>	<b>Average (days)*</b>
subsample size				
Inadequate subsample size	Sha Tin - Sun Tin Wai	17	17	58.6
Inadequate subsample size	Sham Shui Po - Un Chau	22	22	58.6
Inadequate subsample size	Kwun Tong - Ting On	13	13	58.7
Inadequate subsample size	Wan Chai - Stubbs Road	14	14	58.7
Inadequate subsample size	Yuen Long - Yuen Long Centre	12	12	58.8
Inadequate subsample size	North - Yu Tai	14	14	58.9
Inadequate subsample size	Yuen Long - Pat Heung North	18	18	59.0
Inadequate subsample size	Sai Kung - Hong King	26	26	59.1
Inadequate subsample size	Tai Po - Po Nga	28	28	59.1
Inadequate subsample size	Kwun Tong - Lower Ngau Tau Kok Estate	27	26	59.1
Inadequate subsample size	Tsuen Wan - Tak Wah	18	18	59.2
Inadequate subsample size	Islands - Lantau	11	11	59.3
Inadequate subsample size	Islands - Discovery Bay	29	28	59.4
Inadequate subsample size	Tuen Mun - Yau Oi North	18	18	59.4
Inadequate subsample size	Sai Kung - King Lam	16	16	59.4
Inadequate subsample size	Islands - Tung Chung Central	25	25	59.5
Inadequate subsample size	Tuen Mun - Lung Mun	16	16	59.5
Inadequate subsample size	Kwun Tong - Kowloon Bay	28	28	59.5
Inadequate subsample size	Yuen Long - Ping Shan South	28	28	59.7
Inadequate subsample size	Yuen Long - Nam Ping	8	8	59.9
Inadequate subsample size	Yuen Long - Yat Chak	8	8	59.9
Inadequate subsample size	Kwun Tong - Lok Wah South	9	9	59.9
Inadequate subsample size	Kwai Tsing - Tai Pak Tin West	10	9	59.9
Inadequate subsample size	Yuen Long - San Tin	11	11	59.9
Inadequate subsample size	Southern - Wong Chuk Hang	27	27	59.9



<b>Rank</b>	<b>Constituency</b>	<b>Sample size</b>	<b>Valid sample size#</b>	<b>Average (days)*</b>
Inadequate subsample size	Sai Kung - Do Shin	29	29	60.0
Inadequate subsample size	Southern - Ap Lei Chau Estate	6	6	60.0
Inadequate subsample size	Kwun Tong - On Tat	5	5	60.0
Inadequate subsample size	Kwun Tong - Hong Lok	19	19	60.0
Inadequate subsample size	Wan Chai - Southorn	16	16	60.1
Inadequate subsample size	Kwai Tsing - Cheung Ching	22	22	60.2
Inadequate subsample size	Wan Chai - Tai Fat Hau	17	17	60.3
Inadequate subsample size	Kwai Tsing - Cheung On	28	28	60.5
Inadequate subsample size	Kwai Tsing - Cheung Hong	23	23	60.6
Inadequate subsample size	Sham Shui Po - Nam Cheong South	20	20	60.7
Inadequate subsample size	Wan Chai - Hennessy	10	10	60.7
Inadequate subsample size	Eastern - Fort Street	25	25	60.8
Inadequate subsample size	Sha Tin - Wo Che Estate	25	25	60.8
Inadequate subsample size	Sha Tin - Kwong Hong	14	14	60.9
Inadequate subsample size	Sha Tin - Chui Ka	16	16	60.9
Inadequate subsample size	Southern - Ap Lei Chau North	30	29	61.0
Inadequate subsample size	North - Fung Tsui	14	14	61.1
Inadequate subsample size	Sha Tin - Kwong Yuen	11	11	61.1
Inadequate subsample size	Sham Shui Po - Nam Cheong East	20	19	61.1
Inadequate subsample size	Sham Shui Po - Lung Ping & Sheung Pak Tin	19	19	61.1
Inadequate subsample size	Kwun Tong - Kwun Tong Central	17	17	61.2
Inadequate subsample size	Central & Western - Tung Wah	21	21	61.3
Inadequate subsample size	Sha Tin - Pok Hong	22	22	61.4
Inadequate subsample size	Wong Tai Sin - Chuk Yuen South	10	10	61.4
Inadequate subsample size	Kwun Tong - Hing Tin	18	18	61.4
Inadequate	Yuen Long - Ching King	20	20	61.5

<b>Rank</b>	<b>Constituency</b>	<b>Sample size</b>	<b>Valid sample size#</b>	<b>Average (days)*</b>
subsample size				
Inadequate subsample size	Sha Tin - Chui Tin	24	24	61.5
Inadequate subsample size	Yuen Long - Ping Shan North	10	10	61.5
Inadequate subsample size	Yau Tsim Mong - Mong Kok South	13	13	61.5
Inadequate subsample size	Sai Kung - Hau Tak	19	19	61.6
Inadequate subsample size	Tai Po - Tai Yuen	20	19	61.6
Inadequate subsample size	Yau Tsim Mong - East Tsim Sha Tsui & King's Park	27	27	61.7
Inadequate subsample size	Kwun Tong - Sau Mau Ping South	10	9	61.7
Inadequate subsample size	North - Ching Ho	9	9	61.7
Inadequate subsample size	Tuen Mun - Fu Tai	25	25	61.7
Inadequate subsample size	Wong Tai Sin - Ching Oi	28	28	61.8
Inadequate subsample size	Yau Tsim Mong - Yau Ma Tei South	25	25	61.9
Inadequate subsample size	Tuen Mun - Hing Tsak	16	16	61.9
Inadequate subsample size	Kwai Tsing - Wah Lai	27	27	61.9
Inadequate subsample size	Kowloon City - Hung Hom	10	10	61.9
Inadequate subsample size	Sai Kung - Hang Hau West	28	28	62.1
Inadequate subsample size	Kwun Tong - Choi Tak	8	7	62.1
Inadequate subsample size	Eastern - Tanner	22	22	62.2
Inadequate subsample size	Islands - Tung Chung North	27	27	62.2
Inadequate subsample size	Sai Kung - Sheung Tak	20	19	62.2
Inadequate subsample size	Tai Po - Hong Lok Yuen	28	28	62.3
Inadequate subsample size	North - Choi Yuen	13	13	62.3
Inadequate subsample size	Sha Tin - Keng Hau	19	19	62.4
Inadequate subsample size	Wong Tai Sin - Chuk Yuen North	20	20	62.5
Inadequate subsample size	Tai Po - San Fu	31	29	62.6

<b>Rank</b>	<b>Constituency</b>	<b>Sample size</b>	<b>Valid sample size#</b>	<b>Average (days)*</b>
Inadequate subsample size	Sha Tin - Jat Chuen	17	17	62.6
Inadequate subsample size	Eastern - Lok Hong	21	21	62.7
Inadequate subsample size	Kwai Tsing - Kwai Shing East Estate	13	13	62.7
Inadequate subsample size	Central & Western - Sheung Wan	16	16	62.8
Inadequate subsample size	Eastern - Siu Sai Wan	16	16	62.8
Inadequate subsample size	Kowloon City - Ka Wai	20	20	63.0
Inadequate subsample size	Kwun Tong - Kwong Tak	21	20	63.0
Inadequate subsample size	Yuen Long - Shui Wah	12	12	63.0
Inadequate subsample size	Kwai Tsing - Shing Hong	19	19	63.0
Inadequate subsample size	Kwun Tong - Yau Lai	14	14	63.1
Inadequate subsample size	Yau Tsim Mong - Tai Nan	23	23	63.2
Inadequate subsample size	Yau Tsim Mong - Mong Kok East	29	29	63.3
Inadequate subsample size	Kwai Tsing - Tai Pak Tin East	11	11	63.3
Inadequate subsample size	Wong Tai Sin - Tsz Wan East	20	18	63.3
Inadequate subsample size	Sai Kung - Po Yee	18	18	63.3
Inadequate subsample size	Yuen Long - Pek Long	13	13	63.5
Inadequate subsample size	Sha Tin - Sha Kok	10	10	63.6
Inadequate subsample size	Kowloon City - Kowloon Tong	24	24	63.6
Inadequate subsample size	Central & Western - Sai Wan	22	22	63.7
Inadequate subsample size	Tuen Mun - Lok Tsui	27	27	63.9
Inadequate subsample size	Kwun Tong - Yau Tong West	13	13	63.9
Inadequate subsample size	Kwun Tong - Po Lok	13	13	63.9

<b>Rank</b>	<b>Constituency</b>	<b>Sample size</b>	<b>Valid sample size#</b>	<b>Average (days)*</b>
Inadequate subsample size	Tsuen Wan - Allway	29	29	64.1
Inadequate subsample size	Wong Tai Sin - Choi Wan West	12	12	64.3
Inadequate subsample size	Tuen Mun - Butterfly	12	12	64.3
Inadequate subsample size	Kowloon City - To Kwa Wan South	15	14	64.3
Inadequate subsample size	Tai Po - Tai Po Hui	8	8	64.4
Inadequate subsample size	Kwun Tong - Jordan Valley	17	17	64.4
Inadequate subsample size	Wan Chai - Happy Valley	29	28	64.5
Inadequate subsample size	Eastern - Tsui Tak	27	27	64.6
Inadequate subsample size	Yau Tsim Mong - Kowloon Station	13	13	64.6
Inadequate subsample size	Tai Po - Wan Tau Tong	16	16	64.6
Inadequate subsample size	Yau Tsim Mong - Tsim Sha Tsui Central	19	19	64.6
Inadequate subsample size	Yuen Long - Tin Shing	19	19	64.6
Inadequate subsample size	Southern - Wah Fu North	16	16	64.7
Inadequate subsample size	Kowloon City - Hok Yuen Laguna Verde	26	26	64.8
Inadequate subsample size	Central & Western - Peak	12	12	64.9
Inadequate subsample size	Central & Western - Kennedy Town & Mount Davis	21	21	65.0
Inadequate subsample size	Southern - Wah Kwai	25	25	65.0
Inadequate subsample size	Southern - Wah Fu South	17	17	65.2
Inadequate subsample size	Southern - Lei Tung I	20	20	65.3
Inadequate subsample size	Yau Tsim Mong - Jordan North	4	4	65.3
Inadequate subsample size	Wong Tai Sin - San Po Kong	30	29	65.3
Inadequate subsample size	Kowloon City - Oi Chun	19	19	65.3

<b>Rank</b>	<b>Constituency</b>	<b>Sample size</b>	<b>Valid sample size#</b>	<b>Average (days)*</b>
Inadequate subsample size	Tsuen Wan - Cheung Shek	11	11	65.5
Inadequate subsample size	Sai Kung - Tsui Lam	22	22	65.5
Inadequate subsample size	Tai Po - Wang Fuk	25	25	65.5
Inadequate subsample size	Eastern - Tsui Wan	16	16	65.6
Inadequate subsample size	Sai Kung - Wan Po South	28	28	65.6
Inadequate subsample size	Eastern - A Kung Ngam	17	17	65.6
Inadequate subsample size	Kwun Tong - Chun Cheung	13	13	65.8
Inadequate subsample size	Sha Tin - Tin Sum	13	13	65.8
Inadequate subsample size	Kwai Tsing - Tsing Yi South	18	18	65.8
Inadequate subsample size	Tsuen Wan - Clague Garden	25	25	65.9
Inadequate subsample size	Yuen Long - Kam Tin	29	29	65.9
Inadequate subsample size	Sha Tin - Hin Ka	20	20	66.0
Inadequate subsample size	Yuen Long - Yuen Lung	28	28	66.0
Inadequate subsample size	Eastern - Kornhill Garden	28	28	66.1
Inadequate subsample size	Kowloon City - Lok Man	17	17	66.2
Inadequate subsample size	Kwai Tsing - Kwai Luen	14	14	66.2
Inadequate subsample size	Yau Tsim Mong - Olympic	26	26	66.3
Inadequate subsample size	Southern - Lei Tung II	15	15	66.4
Inadequate subsample size	Yuen Long - Shap Pat Heung North	7	7	66.4
Inadequate subsample size	Tuen Mun - Shan King	23	23	66.4
Inadequate subsample size	Wan Chai - Tai Hang	17	16	66.6
Inadequate subsample size	Islands - Mun Yat	10	10	66.6

<b>Rank</b>	<b>Constituency</b>	<b>Sample size</b>	<b>Valid sample size#</b>	<b>Average (days)*</b>
Inadequate subsample size	Tsuen Wan - Lei Muk Shue West	11	11	66.8
Inadequate subsample size	Sham Shui Po - Po Lai	25	25	67.0
Inadequate subsample size	Kowloon City - Hoi Sham	20	20	67.1
Inadequate subsample size	Kwun Tong - Yuet Wah	21	21	67.1
Inadequate subsample size	Eastern - City Garden	29	29	67.2
Inadequate subsample size	North - Wah Ming	11	11	67.4
Inadequate subsample size	Eastern - Lower Yiu Tung	16	16	67.5
Inadequate subsample size	Sham Shui Po - Nam Cheong Central	4	4	67.5
Inadequate subsample size	Yuen Long - Fung Nin	14	14	67.5
Inadequate subsample size	Yuen Long - Yuet Yan	10	10	68.0
Inadequate subsample size	Kowloon City - Hung Hom Bay	26	26	68.1
Inadequate subsample size	Tsuen Wan - Tsuen Wan Centre	23	23	68.1
Inadequate subsample size	Yuen Long - Shui Oi	10	10	68.1
Inadequate subsample size	Tuen Mun - Kin Sang	22	21	68.1
Inadequate subsample size	Tuen Mun - San Hui	19	19	68.2
Inadequate subsample size	Sai Kung - Fu Nam	28	28	68.3
Inadequate subsample size	Wan Chai - Tin Hau	18	18	68.3
Inadequate subsample size	Southern - Tin Wan	24	24	68.4
Inadequate subsample size	Tai Po - Fu Ming Sun	25	25	68.6
Inadequate subsample size	Kwun Tong - Upper Ngau Tau Kok Estate	11	11	68.7
Inadequate subsample size	Sai Kung - Sai Kung Islands	29	29	68.8
Inadequate subsample size	Sham Shui Po - Nam Cheong West	12	12	68.8

<b>Rank</b>	<b>Constituency</b>	<b>Sample size</b>	<b>Valid sample size#</b>	<b>Average (days)*</b>
Inadequate subsample size	Sham Shui Po - Lei Cheng Uk	24	24	69.0
Inadequate subsample size	Wong Tai Sin - Lung Ha	20	20	69.4
Inadequate subsample size	Central & Western - Chung Wan	23	22	69.5
Inadequate subsample size	Yuen Long - Yuen Long Tung Tau	25	24	69.6
Inadequate subsample size	Tuen Mun - Tin King	17	17	69.6
Inadequate subsample size	Tsuen Wan - Fuk Loi	10	10	69.6
Inadequate subsample size	Wong Tai Sin - Fung Wong	22	22	69.6
Inadequate subsample size	Eastern - Quarry Bay	24	24	69.6
Inadequate subsample size	Sai Kung - Hoi Chun	26	26	69.7
Inadequate subsample size	Tai Po - Tai Po Central	23	23	69.8
Inadequate subsample size	Yuen Long - Yiu Yau	15	15	69.9
Inadequate subsample size	Kwun Tong - Tsui Ping	13	12	69.9
Inadequate subsample size	North - Wah Do	20	19	69.9
Inadequate subsample size	Wan Chai - Broadwood	16	15	69.9
Inadequate subsample size	Southern - Pokfulam	22	22	70.1
Inadequate subsample size	Sai Kung - Po Lam	29	29	70.2
Inadequate subsample size	Central & Western - Mid Levels East	22	22	70.2
Inadequate subsample size	Yuen Long - Shap Pat Heung Central	28	28	70.4
Inadequate subsample size	Sai Kung - Wai Yan	29	29	70.5
Inadequate subsample size	Kwun Tong - On Lee	10	10	70.5
Inadequate subsample size	Wan Chai - Causeway Bay	20	20	70.8
Inadequate subsample size	Yuen Long - Shap Pat Heung West	25	25	70.8

<b>Rank</b>	<b>Constituency</b>	<b>Sample size</b>	<b>Valid sample size#</b>	<b>Average (days)*</b>
Inadequate subsample size	North - Luen Wo Hui	25	25	71.0
Inadequate subsample size	Kwai Tsing - Kwai Chung Estate South	8	8	71.0
Inadequate subsample size	Yau Tsim Mong - Mong Kok North	16	16	71.3
Inadequate subsample size	Sha Tin - Fu Lung	29	29	71.4
Inadequate subsample size	Sham Shui Po - Ha Pak Tin	18	18	71.6
Inadequate subsample size	North - Tin Ping East	21	20	71.6
Inadequate subsample size	Kwai Tsing - Shek Yam	14	14	71.7
Inadequate subsample size	Yau Tsim Mong - Tsim Sha Tsui West	10	10	71.8
Inadequate subsample size	Tuen Mun - Sam Shing	16	16	72.1
Inadequate subsample size	Sha Tin - Wan Shing	21	19	72.2
Inadequate subsample size	Kwai Tsing - Shek Lei South	16	16	72.2
Inadequate subsample size	Eastern - Fei Tsui	11	11	72.3
Inadequate subsample size	Sai Kung - Choi Kin	24	24	72.5
Inadequate subsample size	Kowloon City - Oi Man	20	18	72.8
Inadequate subsample size	Kwun Tong - Hip Hong	7	7	72.9
Inadequate subsample size	Kwai Tsing - Hing Fong	20	19	73.4
Inadequate subsample size	Kwai Tsing - Kwai Shing West Estate	11	11	73.6
Inadequate subsample size	Kwai Tsing - Lai King	12	12	73.7
Inadequate subsample size	Eastern - Hing Tung	24	24	73.8
Inadequate subsample size	North - Fanling Town	28	28	73.9
Inadequate subsample size	Tsuen Wan - Yeung Uk Road	20	20	74.2
Inadequate subsample size	Eastern - Healthy Village	21	20	74.5



<b>Rank</b>	<b>Constituency</b>	<b>Sample size</b>	<b>Valid sample size#</b>	<b>Average (days)*</b>
Inadequate subsample size	Wong Tai Sin - Wang Tau Hom	15	15	74.8
Inadequate subsample size	Yuen Long - Ping Shan Central	15	15	75.0
Inadequate subsample size	Kwai Tsing - Cho Yiu	29	29	75.7
Inadequate subsample size	Kowloon City - Kai Tak North	8	8	75.8
Inadequate subsample size	Wong Tai Sin - Choi Wan East	16	16	75.9
Inadequate subsample size	Tai Po - Kwong Fuk & Plover Cove	14	14	76.0
Inadequate subsample size	Kwun Tong - Sau Mau Ping Central	15	14	76.1
Inadequate subsample size	Wong Tai Sin - Lung Tsui	13	13	76.2
Inadequate subsample size	Kwun Tong - Kai Yip	17	17	76.7
Inadequate subsample size	Sai Kung - Pak Sha Wan	24	24	76.8
Inadequate subsample size	Eastern - Kai Hiu	10	10	77.1
Inadequate subsample size	Eastern - Mount Parker	14	14	77.1
Inadequate subsample size	Kwun Tong - Po Tat	6	6	77.5
Inadequate subsample size	Wong Tai Sin - Tung Tau	28	28	77.9
Inadequate subsample size	Yau Tsim Mong - Cherry	15	15	78.0
Inadequate subsample size	Central & Western - Castle Road	17	17	78.5
Inadequate subsample size	Sham Shui Po - Nam Cheong North	4	4	78.8
Inadequate subsample size	Tuen Mun - Yan Tin	9	8	78.8
Inadequate subsample size	Eastern - Aldrich Bay	23	23	79.2
Inadequate subsample size	Sham Shui Po - Fortune	11	11	79.6
Inadequate subsample size	Kwun Tong - Sheung Shun	13	13	80.2
Inadequate subsample size	Tai Po - Fu Heng	18	18	80.3

<b>Rank</b>	<b>Constituency</b>	<b>Sample size</b>	<b>Valid sample size#</b>	<b>Average (days)*</b>
Inadequate subsample size	Tuen Mun - On Ting	14	14	80.4
Inadequate subsample size	Wan Chai - Jardine's Lookout	15	15	81.9
Inadequate subsample size	Kowloon City - Kai Tak Central & South	8	8	82.5
Inadequate subsample size	Sha Tin - Shui Chuen O	7	6	83.5
Inadequate subsample size	Yau Tsim Mong - Jordan South	14	14	86.8
Inadequate subsample size	North - Tin Ping West	16	16	95.6

# Excludes cases of "don't know / hard to say" and "refuse to answer"

\* Numeric conversion as follows: " No reserve at all / already none=0.0 days; 1-2 days=1.5 days; 3-4 days=3.5 days; 5-6 days=5.5 days; 1 week=7.0 days; 2 weeks=14.0 days; 3 weeks=21.0 days; 1 month=30.0 days; 1.5 months=45 days; 2 months=60 days; 3 months=90 days, over 3 months=120 days; don't know/hard to say are excluded."

## **Appendix 3**

### **Mask Usage by Constituency**

**Appendix 3: CHIS result of each constituency -**

"How would you describe your **usage of face mask**? Please try to use past 7 days as your reference."  
(Past 15 days data)

Rank	Constituency	Number of respondents	Valid samples #	Mean (mask/day) *
1	Kowloon City - Kadoorie	47	47	0.67
2	Central & Western - Water Street	31	31	0.68
2	Tai Po - Lam Tsuen Valley	31	30	0.68
4	Sha Tin - Lee On	30	30	0.71
5	Tai Po - Sai Kung North	33	33	0.73
6	Kwun Tong - Laguna City	59	59	0.74
6	Kwun Tong - King Tin	50	48	0.74
8	Sha Tin - Ma On Shan Town Centre	41	41	0.75
9	Central & Western - University	44	43	0.76
9	Sham Shui Po - Yau Yat Tsuen	33	33	0.76
9	Southern - Chi Fu	48	48	0.76
12	Kowloon City - Prince	32	32	0.77
12	Eastern - Lei King Wan	41	41	0.77
12	Sai Kung - Nam On	39	37	0.77
12	Eastern - Heng Fa Chuen	63	62	0.77
16	Eastern - Tai Koo Shing East	42	41	0.78
17	Yau Tsim Mong - Tai Kok Tsui North	31	30	0.79
17	Tai Po - Tai Po Kau	33	33	0.79
17	Tsuen Wan - Tsuen Wan West	47	46	0.79
20	Islands - Tung Chung South	36	35	0.80
20	Eastern - Yan Lam	33	33	0.80
20	Sha Tin - Di Yee	36	36	0.80
20	Sha Tin - Kam To	41	41	0.80
20	Eastern - Fortress Hill	40	40	0.80
20	Sha Tin - Fo Tan	38	38	0.80
26	Yuen Long - Kingswood South	35	35	0.81
26	Kowloon City - Whampoa East	31	31	0.81
26	Kwun Tong - To Tai	46	45	0.81
26	Tuen Mun - Siu Hong	31	31	0.81
26	Wong Tai Sin - Lung Sing	52	51	0.81
26	Yuen Long - Fairview Park	50	50	0.81
26	Sham Shui Po - Mei Foo Central	36	36	0.81
33	Southern - South Horizons East	40	40	0.82
34	Eastern - Nam Fung	47	47	0.83
34	Kwai Tsing - On Ho	35	34	0.83

Rank	Constituency	Number of respondents	Valid samples #	Mean (mask/day) *
36	Yau Tsim Mong - Charming	30	30	0.84
36	Sha Tin - Sui Wo	49	49	0.84
36	Eastern - Kam Ping	34	34	0.84
36	Sham Shui Po - Mei Foo North	43	43	0.84
36	Kwun Tong - Lai Ching	47	47	0.84
36	North - Yan Shing	33	33	0.84
42	Sham Shui Po - Cheung Sha Wan	35	35	0.85
42	Eastern - Tai Koo Shing West	41	40	0.85
42	Sha Tin - Chung On	33	32	0.85
42	Tai Po - Old Market & Serenity	42	42	0.85
46	Wong Tai Sin - King Fu	47	47	0.86
46	Sha Tin - Chun Ma	42	42	0.86
46	Southern - South Horizons West	38	38	0.86
46	Tai Po - San Fu	31	30	0.86
46	Central & Western - Kwun Lung	32	32	0.86
46	Sai Kung - Kwan Po	41	41	0.86
46	Sai Kung - O Tong	40	40	0.86
53	Wong Tai Sin - Tin Keung	31	30	0.87
53	Tai Po - Shuen Wan	40	40	0.87
53	Eastern - Provident	31	31	0.87
53	Sai Kung - Wan Hang	35	35	0.87
53	Kowloon City - Whampoa West	43	43	0.87
58	Tuen Mun - Prime View	40	39	0.88
58	Wong Tai Sin - Chi Choi	37	37	0.88
58	Tsuen Wan - Discovery Park	38	38	0.88
58	Yau Tsim Mong - Fu Pak	30	30	0.88
58	Eastern - Braemar Hill	40	39	0.88
58	North - Fanling South	45	45	0.88
58	Tuen Mun - Fu Sun	33	33	0.88
65	Sha Tin - Wu Kai Sha	59	59	0.89
66	Sham Shui Po - Lai Chi Kok Central	39	39	0.90
66	Tuen Mun - Hanford	38	37	0.90
66	Wan Chai - Victoria Park	30	30	0.90
66	Sai Kung - Wan Po North	48	48	0.90
66	Tsuen Wan - Luk Yeung	39	38	0.90
66	Eastern - Kornhill	39	39	0.90
66	Sai Kung - Kwong Ming	31	31	0.90
66	Tsuen Wan - Ma Wan	32	32	0.90
74	Southern - Aberdeen	36	36	0.91
74	Tsuen Wan - Tsuen Wan Rural	54	54	0.91

Rank	Constituency	Number of respondents	Valid samples #	Mean (mask/day) *
74	Yuen Long - Kingswood North	37	37	0.91
74	Sha Tin - Yu Yan	41	40	0.91
74	Sai Kung - Yan Ying	38	38	0.91
79	Kwun Tong - Hiu Lai	34	34	0.92
79	Eastern - Sai Wan Ho	36	35	0.92
79	Sha Tin - Chun Fung	31	31	0.92
79	Southern - Ap Lei Chau North	30	30	0.93
83	Eastern - Shau Kei Wan	34	34	0.93
83	Tuen Mun - Tsui Hing	50	50	0.93
83	Sham Shui Po - Mei Foo South	43	43	0.93
86	Sha Tin - Wong Uk	42	42	0.94
86	Kwai Tsing - Greenfield	50	50	0.94
86	Kwai Tsing - Wai Ying	37	37	0.94
86	Sha Tin - Sha Tin Town Centre	39	39	0.94
90	Sha Tin - Tai Wai	37	36	0.95
90	Sha Tin - Kam Ying	30	30	0.95
92	Kowloon City - Ho Man Tin	46	46	0.96
92	Tsuen Wan - Ting Sham	43	43	0.96
94	Yuen Long - Shui Pin	31	31	0.97
94	Sha Tin - Yue Shing	53	53	0.97
94	Tsuen Wan - Hoi Bun	46	46	0.97
94	Sha Tin - City One	59	59	0.97
98	Sai Kung - Wai King	56	56	0.99
99	Sha Tin - On Tai	33	32	1.00
99	Tuen Mun - Siu Tsui	38	37	1.00
99	Kwai Tsing - Tsing Yi Estate	35	35	1.00
102	Kowloon City - Ma Hang Chung	32	32	1.01
103	Kwun Tong - Lam Tin	35	35	1.02
104	Sha Tin - Bik Woo	32	32	1.03
104	Sai Kung - Fu Kwan	36	36	1.03
106	Tuen Mun - Tuen Mun Town Centre	33	33	1.04
106	Tsuen Wan - Tsuen Wan South	30	30	1.04
106	Yuen Long - Fung Cheung	34	34	1.04
109	Kowloon City - Ma Tau Wai	32	31	1.05
109	Tuen Mun - Siu Hei	30	30	1.05
109	Sha Tin - Hoi Nam	30	30	1.05
112	Tai Po - Tai Wo	32	31	1.06
113	Tsuen Wan - Lai To	30	30	1.07
114	Tuen Mun - Siu Chi	41	41	1.08
Inadequate subsample size	Southern - Bays Area	4	4	0.44

<b>Rank</b>	<b>Constituency</b>	<b>Number of respondents</b>	<b>Valid samples #</b>	<b>Mean (mask/day) *</b>
Inadequate subsample size	Sham Shui Po - Nam Cheong North	4	4	0.50
Inadequate subsample size	Wong Tai Sin - Choi Hung	5	5	0.50
Inadequate subsample size	Central & Western - Castle Road	17	17	0.55
Inadequate subsample size	North - Queen's Hill	21	21	0.61
Inadequate subsample size	Central & Western - Peak	12	12	0.63
Inadequate subsample size	Wong Tai Sin - Tsz Wan West	12	12	0.63
Inadequate subsample size	Sha Tin - Sha Kok	10	10	0.63
Inadequate subsample size	Tsuen Wan - Cheung Shek	11	11	0.64
Inadequate subsample size	Wan Chai - Happy Valley	29	27	0.65
Inadequate subsample size	Wan Chai - Stubbs Road	14	14	0.66
Inadequate subsample size	Wan Chai - Broadwood	16	16	0.67
Inadequate subsample size	Yuen Long - Kam Tin	29	29	0.67
Inadequate subsample size	North - Sheung Shui Rural	12	12	0.67
Inadequate subsample size	Sham Shui Po - Nam Shan, Tai Hang Tung & Tai Hang Sai	13	13	0.68
Inadequate subsample size	Kwai Tsing - Lower Tai Wo Hau	7	7	0.69
Inadequate subsample size	Eastern - Kai Hiu	10	10	0.70
Inadequate subsample size	Kowloon City - Kai Tak East	5	5	0.70
Inadequate subsample size	Sham Shui Po - Lung Ping & Sheung Pak Tin	19	19	0.71
Inadequate subsample size	Kwai Tsing - Tai Pak Tin East	11	11	0.71
Inadequate subsample size	Sha Tin - Chung Tin	18	18	0.72
Inadequate subsample size	Islands - Lamma & Po Toi	13	13	0.72
Inadequate subsample size	Sham Shui Po - Shek Kip Mei	14	14	0.72
Inadequate subsample size	Tai Po - Kwong Fuk & Plover Cove	14	14	0.72
Inadequate subsample size	Sham Shui Po - Lei Cheng Uk	24	23	0.72
Inadequate subsample size	Kowloon City - Ma Tau Kok	14	14	0.73
Inadequate	Kwun Tong - Hip Hong	7	7	0.73

<b>Rank</b>	<b>Constituency</b>	<b>Number of respondents</b>	<b>Valid samples #</b>	<b>Mean (mask/day) *</b>
subsample size				
Inadequate subsample size	Sham Shui Po - Nam Cheong West	12	12	0.73
Inadequate subsample size	Tsuen Wan - Lei Muk Shue West	11	11	0.73
Inadequate subsample size	Sai Kung - Sai Kung Central	18	18	0.74
Inadequate subsample size	Kwun Tong - Yau Tong East	7	7	0.74
Inadequate subsample size	Wan Chai - Tai Hang	17	16	0.74
Inadequate subsample size	Eastern - Fullview	21	21	0.74
Inadequate subsample size	Kwai Tsing - Cho Yiu	29	29	0.74
Inadequate subsample size	Southern - Wah Kwai	25	25	0.75
Inadequate subsample size	Tuen Mun - Lok Tsui	27	27	0.75
Inadequate subsample size	Yuen Long - Nam Ping	8	8	0.75
Inadequate subsample size	Yuen Long - Hung Fuk	4	4	0.75
Inadequate subsample size	Kwai Tsing - Hing Fong	20	20	0.75
Inadequate subsample size	Eastern - Fei Tsui	11	11	0.76
Inadequate subsample size	Southern - Pokfulam	22	22	0.76
Inadequate subsample size	Wong Tai Sin - Chuk Yuen South	10	10	0.76
Inadequate subsample size	Yuen Long - Ping Shan North	10	10	0.76
Inadequate subsample size	Sai Kung - Kin Ming	9	9	0.76
Inadequate subsample size	Central & Western - Belcher	29	29	0.76
Inadequate subsample size	Wan Chai - Causeway Bay	20	19	0.76
Inadequate subsample size	Yuen Long - Yuen Long Tung Tau	25	25	0.76
Inadequate subsample size	Tuen Mun - King Hing	12	12	0.76
Inadequate subsample size	Sha Tin - Chui Tin	24	23	0.76
Inadequate subsample size	Yau Tsim Mong - Tsim Sha Tsui West	10	10	0.77
Inadequate subsample size	Tuen Mun - Lung Mun	16	15	0.77
Inadequate subsample size	Kwun Tong - Lok Wah North	10	10	0.78



<b>Rank</b>	<b>Constituency</b>	<b>Number of respondents</b>	<b>Valid samples #</b>	<b>Mean (mask/day) *</b>
Inadequate subsample size	Yau Tsim Mong - Kowloon Station	13	13	0.78
Inadequate subsample size	Sha Tin - Fu Lung	29	29	0.78
Inadequate subsample size	Sham Shui Po - Fu Cheong	17	16	0.78
Inadequate subsample size	Yau Tsim Mong - Tsim Sha Tsui Central	19	19	0.78
Inadequate subsample size	Sha Tin - Keng Hau	19	19	0.78
Inadequate subsample size	Sham Shui Po - So Uk	12	12	0.78
Inadequate subsample size	Yau Tsim Mong - Mong Kok East	29	29	0.78
Inadequate subsample size	Tuen Mun - Fu Tai	25	25	0.78
Inadequate subsample size	Sham Shui Po - Lai Chi Kok North	19	19	0.78
Inadequate subsample size	Sham Shui Po - Nam Cheong East	20	20	0.78
Inadequate subsample size	Eastern - Tanner	22	22	0.78
Inadequate subsample size	Sai Kung - Do Shin	29	29	0.78
Inadequate subsample size	Islands - Discovery Bay	29	29	0.78
Inadequate subsample size	Kowloon City - Hok Yuen Laguna Verde	26	26	0.79
Inadequate subsample size	Yuen Long - Shap Pat Heung North	7	7	0.79
Inadequate subsample size	Wan Chai - Southorn	16	16	0.79
Inadequate subsample size	Tai Po - Chung Ting	24	24	0.79
Inadequate subsample size	Kwai Tsing - Kwai Shing East Estate	13	13	0.79
Inadequate subsample size	Eastern - Lok Hong	21	21	0.79
Inadequate subsample size	Kwai Tsing - Cheung On	28	27	0.79
Inadequate subsample size	Sai Kung - Hong King	26	26	0.79
Inadequate subsample size	Kowloon City - Lung Shing	15	15	0.79
Inadequate subsample size	Tsuen Wan - Lei Muk Shue East	13	13	0.79
Inadequate subsample size	Kwun Tong - Pak Nga	21	21	0.80
Inadequate subsample size	Southern - Stanley & Shek O	24	24	0.80
Inadequate	Yuen Long - Tsz Yau	12	12	0.80

<b>Rank</b>	<b>Constituency</b>	<b>Number of respondents</b>	<b>Valid samples #</b>	<b>Mean (mask/day) *</b>
subsample size				
Inadequate subsample size	Sai Kung - Sai Kung Islands	29	28	0.80
Inadequate subsample size	Sha Tin - Kwong Hong	14	14	0.80
Inadequate subsample size	Kwai Tsing - Tai Pak Tin West	10	10	0.81
Inadequate subsample size	Yau Tsim Mong - Yau Ma Tei South	25	25	0.81
Inadequate subsample size	Kowloon City - Sheung Lok	18	18	0.81
Inadequate subsample size	Tai Po - Po Nga	28	28	0.81
Inadequate subsample size	Sai Kung - Hang Hau East	30	29	0.81
Inadequate subsample size	Kowloon City - Hung Hom Bay	26	26	0.82
Inadequate subsample size	Eastern - Hing Man	11	11	0.82
Inadequate subsample size	Sham Shui Po - Un Chau	22	22	0.82
Inadequate subsample size	Tuen Mun - Leung King	11	11	0.82
Inadequate subsample size	Islands - Tung Chung Central	25	25	0.82
Inadequate subsample size	Kwun Tong - Tsui Ping	13	13	0.82
Inadequate subsample size	Kowloon City - Kai Tak North	8	8	0.82
Inadequate subsample size	Wong Tai Sin - Lung Sheung	19	19	0.82
Inadequate subsample size	Kwun Tong - Sau Mau Ping North	20	20	0.83
Inadequate subsample size	Yau Tsim Mong - Mong Kok West	12	12	0.83
Inadequate subsample size	Yuen Long - Fung Nin	14	13	0.83
Inadequate subsample size	Kowloon City - Hoi Sham	20	20	0.83
Inadequate subsample size	Wong Tai Sin - Tsz Wan East	20	20	0.83
Inadequate subsample size	Kwun Tong - Kowloon Bay	28	28	0.83
Inadequate subsample size	Eastern - City Garden	29	29	0.83
Inadequate subsample size	Yau Tsim Mong - Jordan South	14	14	0.83
Inadequate subsample size	Kowloon City - To Kwa Wan North	7	7	0.83
Inadequate subsample size	Kwun Tong - Yuet Wah	21	21	0.83

<b>Rank</b>	<b>Constituency</b>	<b>Number of respondents</b>	<b>Valid samples #</b>	<b>Mean (mask/day) *</b>
Inadequate subsample size	Yuen Long - Chung Pak	9	9	0.83
Inadequate subsample size	Yuen Long - Yat Chak	8	8	0.83
Inadequate subsample size	Sha Tin - Shui Chuen O	7	7	0.83
Inadequate subsample size	Islands - Cheung Chau	20	20	0.83
Inadequate subsample size	Yau Tsim Mong - Olympic	26	26	0.84
Inadequate subsample size	Sha Tin - Pok Hong	22	22	0.84
Inadequate subsample size	Kwun Tong - Lower Ngau Tau Kok Estate	27	27	0.84
Inadequate subsample size	Tuen Mun - Yuet Wu	20	20	0.84
Inadequate subsample size	Wong Tai Sin - Lung Ha	20	19	0.84
Inadequate subsample size	Sai Kung - Wan Po South	28	28	0.84
Inadequate subsample size	Kwun Tong - Jordan Valley	17	17	0.84
Inadequate subsample size	Kwai Tsing - Tsing Yi South	18	17	0.84
Inadequate subsample size	Tuen Mun - Butterfly	12	12	0.85
Inadequate subsample size	Eastern - Kornhill Garden	28	28	0.85
Inadequate subsample size	Eastern - Tsui Wan	16	16	0.85
Inadequate subsample size	North - Cheung Wah	20	20	0.85
Inadequate subsample size	Kwun Tong - Hong Lok	19	19	0.85
Inadequate subsample size	Sai Kung - Hau Tak	19	19	0.85
Inadequate subsample size	Tuen Mun - On Ting	14	14	0.85
Inadequate subsample size	Central & Western - Sai Ying Pun	27	26	0.85
Inadequate subsample size	Central & Western - Shek Tong Tsui	24	24	0.85
Inadequate subsample size	Kowloon City - Kai Tak Central & South	8	8	0.85
Inadequate subsample size	Kwun Tong - Choi Tak	8	8	0.85
Inadequate subsample size	Tsuen Wan - Shek Wai Kok	8	8	0.85
Inadequate subsample size	Yuen Long - Ha Tsuen	13	12	0.85
Inadequate	Sai Kung - Hang Hau West	28	28	0.85

<b>Rank</b>	<b>Constituency</b>	<b>Number of respondents</b>	<b>Valid samples #</b>	<b>Mean (mask/day) *</b>
subsample size				
Inadequate subsample size	Kwai Tsing - Lai King	12	12	0.85
Inadequate subsample size	Central & Western - Kennedy Town & Mount Davis	21	21	0.86
Inadequate subsample size	Kwai Tsing - Kwai Chung Estate South	8	7	0.86
Inadequate subsample size	Kwun Tong - Shun Tin	10	10	0.86
Inadequate subsample size	Islands - Mun Yat	10	10	0.86
Inadequate subsample size	Wong Tai Sin - San Po Kong	30	29	0.86
Inadequate subsample size	Eastern - Healthy Village	21	20	0.86
Inadequate subsample size	North - Fung Tsui	14	14	0.86
Inadequate subsample size	Kwai Tsing - Kwai Hing	15	14	0.86
Inadequate subsample size	Wan Chai - Oi Kwan	22	22	0.87
Inadequate subsample size	Yuen Long - Yiu Yau	15	15	0.87
Inadequate subsample size	Sham Shui Po - Ha Pak Tin	18	18	0.88
Inadequate subsample size	Yuen Long - Shap Pat Heung East	8	8	0.88
Inadequate subsample size	Tai Po - Hong Lok Yuen	28	28	0.88
Inadequate subsample size	Sai Kung - Po Yee	18	18	0.88
Inadequate subsample size	Eastern - Tsui Tak	27	27	0.88
Inadequate subsample size	North - Luen Wo Hui	25	25	0.88
Inadequate subsample size	Yuen Long - Yuen Lung	28	28	0.88
Inadequate subsample size	Yau Tsim Mong - Mong Kok North	16	16	0.88
Inadequate subsample size	Central & Western - Tung Wah	21	21	0.88
Inadequate subsample size	North - Shing Fuk	19	19	0.88
Inadequate subsample size	Tai Po - Wang Fuk	25	24	0.88
Inadequate subsample size	Kwun Tong - Kwun Tong Central	17	17	0.88
Inadequate subsample size	Wan Chai - Canal Road	10	10	0.88
Inadequate subsample size	North - Wah Do	20	20	0.88

<b>Rank</b>	<b>Constituency</b>	<b>Number of respondents</b>	<b>Valid samples #</b>	<b>Mean (mask/day) *</b>
Inadequate subsample size	Yau Tsim Mong - Mong Kok South	13	13	0.88
Inadequate subsample size	Tsuen Wan - Allway	29	29	0.89
Inadequate subsample size	Southern - Tin Wan	24	24	0.89
Inadequate subsample size	Tai Po - Wan Tau Tong	16	16	0.89
Inadequate subsample size	Kowloon City - Oi Man	20	19	0.89
Inadequate subsample size	Sha Tin - Kwong Yuen	11	11	0.89
Inadequate subsample size	Kowloon City - Kowloon Tong	24	24	0.89
Inadequate subsample size	Wong Tai Sin - Wang Tau Hom	15	15	0.89
Inadequate subsample size	Kwun Tong - Po Tat	6	6	0.89
Inadequate subsample size	Yuen Long - Chung Wah	6	6	0.89
Inadequate subsample size	Kowloon City - Oi Chun	19	19	0.89
Inadequate subsample size	Eastern - A Kung Ngam	17	17	0.89
Inadequate subsample size	Kwai Tsing - Shek Yam	14	14	0.89
Inadequate subsample size	Sha Tin - Wan Shing	21	20	0.90
Inadequate subsample size	Kwai Tsing - Shek Lei South	16	16	0.90
Inadequate subsample size	Sham Shui Po - Po Lai	25	25	0.90
Inadequate subsample size	Yau Tsim Mong - Yau Ma Tei North	18	18	0.90
Inadequate subsample size	Kwun Tong - Lok Wah South	9	9	0.90
Inadequate subsample size	Wong Tai Sin - Chuk Yuen North	20	20	0.90
Inadequate subsample size	Yuen Long - Ping Shan Central	15	15	0.90
Inadequate subsample size	North - Sha Ta	5	5	0.90
Inadequate subsample size	Sha Tin - Wo Che Estate	25	25	0.90
Inadequate subsample size	Wong Tai Sin - Choi Wan East	16	16	0.90
Inadequate subsample size	Tuen Mun - Yau Oi North	18	18	0.90
Inadequate subsample size	Sai Kung - Wai Yan	29	29	0.91

<b>Rank</b>	<b>Constituency</b>	<b>Number of respondents</b>	<b>Valid samples #</b>	<b>Mean (mask/day) *</b>
Inadequate subsample size	Sham Shui Po - Lai Kok	11	11	0.91
Inadequate subsample size	Kowloon City - Sung Wong Toi	22	22	0.91
Inadequate subsample size	Kwun Tong - Po Lok	13	13	0.91
Inadequate subsample size	Islands - Tung Chung North	27	27	0.91
Inadequate subsample size	Sai Kung - Po Lam	29	29	0.91
Inadequate subsample size	Sai Kung - King Lam	16	16	0.91
Inadequate subsample size	North - Shek Wu Hui	19	19	0.91
Inadequate subsample size	Kwai Tsing - Wah Lai	27	27	0.91
Inadequate subsample size	Eastern - Quarry Bay	24	24	0.92
Inadequate subsample size	Southern - Ap Lei Chau Estate	6	6	0.92
Inadequate subsample size	Tsuen Wan - Tak Wah	18	18	0.92
Inadequate subsample size	Yuen Long - Ching King	20	20	0.92
Inadequate subsample size	Yuen Long - San Tin	11	11	0.92
Inadequate subsample size	Yuen Long - Pat Heung North	18	18	0.92
Inadequate subsample size	Sha Tin - Tai Shui Hang	26	26	0.92
Inadequate subsample size	Eastern - Siu Sai Wan	16	16	0.92
Inadequate subsample size	Southern - Shek Yue	15	15	0.92
Inadequate subsample size	North - Choi Yuen	13	13	0.92
Inadequate subsample size	North - Wah Ming	11	11	0.92
Inadequate subsample size	Wan Chai - Tin Hau	18	18	0.93
Inadequate subsample size	Tsuen Wan - Clague Garden	25	25	0.93
Inadequate subsample size	Yuen Long - Wang Yat	7	7	0.93

<b>Rank</b>	<b>Constituency</b>	<b>Number of respondents</b>	<b>Valid samples #</b>	<b>Mean (mask/day) *</b>
Inadequate subsample size	Kwun Tong - Upper Ngau Tau Kok Estate	11	11	0.93
Inadequate subsample size	Southern - Lei Tung II	15	15	0.93
Inadequate subsample size	Kowloon City - Ka Wai	20	20	0.93
Inadequate subsample size	Tai Po - Fu Ming Sun	25	25	0.93
Inadequate subsample size	Wong Tai Sin - Tung Mei	20	18	0.94
Inadequate subsample size	Tai Po - Tai Po Hui	8	8	0.94
Inadequate subsample size	Yuen Long - Pat Heung South	26	26	0.94
Inadequate subsample size	Sai Kung - Tak Ming	24	24	0.94
Inadequate subsample size	Kwun Tong - Ping Shek	12	12	0.94
Inadequate subsample size	Kwun Tong - Yau Lai	14	14	0.95
Inadequate subsample size	Wong Tai Sin - Lok Fu	19	19	0.95
Inadequate subsample size	Tsuen Wan - Fuk Loi	10	10	0.95
Inadequate subsample size	Sha Tin - Lower Shing Mun	20	20	0.95
Inadequate subsample size	Kwun Tong - Yau Chui	17	17	0.95
Inadequate subsample size	Kwun Tong - Kwong Tak	21	21	0.95
Inadequate subsample size	Tuen Mun - Yau Oi South	14	14	0.95
Inadequate subsample size	Kwun Tong - Ping Tin	25	25	0.95
Inadequate subsample size	Islands - Yat Tung Estate North	9	9	0.95
Inadequate subsample size	Yau Tsim Mong - Cherry	15	15	0.96
Inadequate subsample size	Kwun Tong - On Lee	10	10	0.96
Inadequate subsample size	Yuen Long - Shui Oi	10	10	0.96
Inadequate subsample size	Eastern - Wan Tsui	17	17	0.96

<b>Rank</b>	<b>Constituency</b>	<b>Number of respondents</b>	<b>Valid samples #</b>	<b>Mean (mask/day) *</b>
Inadequate subsample size	Kwai Tsing - Kwai Shing West Estate	11	11	0.96
Inadequate subsample size	Kwai Tsing - Lai Wah	27	26	0.96
Inadequate subsample size	Tuen Mun - San Hui	19	19	0.96
Inadequate subsample size	Yuen Long - Shui Wah	12	12	0.97
Inadequate subsample size	Sai Kung - Choi Kin	24	24	0.97
Inadequate subsample size	Central & Western - Chung Wan	23	23	0.97
Inadequate subsample size	Yau Tsim Mong - Tai Nan	23	23	0.97
Inadequate subsample size	Sai Kung - Pak Sha Wan	24	24	0.97
Inadequate subsample size	Kwai Tsing - Upper Tai Wo Hau	12	12	0.97
Inadequate subsample size	Sha Tin - Chui Ka	16	16	0.97
Inadequate subsample size	Kwun Tong - Kwun Tong On Tai	10	10	0.98
Inadequate subsample size	Tuen Mun - San King	21	21	0.98
Inadequate subsample size	North - Tin Ping East	21	21	0.98
Inadequate subsample size	Sai Kung - Sheung Tak	20	19	0.98
Inadequate subsample size	Southern - Wong Chuk Hang	27	27	0.98
Inadequate subsample size	Tuen Mun - Tuen Mun Rural	19	19	0.98
Inadequate subsample size	Eastern - Upper Yiu Tung	10	10	0.98
Inadequate subsample size	Yuen Long - Yuen Long Centre	12	11	0.98
Inadequate subsample size	Yuen Long - Tin Yiu	11	11	0.98
Inadequate subsample size	Wong Tai Sin - Choi Wan South	12	12	0.99
Inadequate subsample size	Kwai Tsing - Kwai Fong	12	12	0.99
Inadequate subsample size	Central & Western - Sheung Wan	16	15	0.99



<b>Rank</b>	<b>Constituency</b>	<b>Number of respondents</b>	<b>Valid samples #</b>	<b>Mean (mask/day) *</b>
Inadequate subsample size	Sai Kung - Hoi Chun	26	26	0.99
Inadequate subsample size	Eastern - Lower Yiu Tung	16	15	0.99
Inadequate subsample size	Yuen Long - Ping Shan South	28	27	1.00
Inadequate subsample size	Wan Chai - Tai Fat Hau	17	17	1.00
Inadequate subsample size	Yau Tsim Mong - Jordan North	4	4	1.00
Inadequate subsample size	Sham Shui Po - Nam Cheong Central	4	4	1.00
Inadequate subsample size	Tsuen Wan - Yeung Uk Road	20	20	1.00
Inadequate subsample size	Tai Po - Tai Po Central	23	23	1.00
Inadequate subsample size	Sha Tin - Tin Sum	13	13	1.00
Inadequate subsample size	Kwai Tsing - Cheung Hong	23	23	1.00
Inadequate subsample size	Sha Tin - Jat Chuen	17	17	1.00
Inadequate subsample size	Wan Chai - Jardine's Lookout	15	15	1.01
Inadequate subsample size	Sham Shui Po - Nam Cheong South	20	20	1.01
Inadequate subsample size	Wong Tai Sin - Fung Wong	22	21	1.01
Inadequate subsample size	Yau Tsim Mong - East Tsim Sha Tsui & King's Park	27	27	1.01
Inadequate subsample size	Southern - Lei Tung I	20	20	1.01
Inadequate subsample size	Yau Tsim Mong - Jordan West	19	19	1.02
Inadequate subsample size	Sha Tin - Sun Tin Wai	17	17	1.02
Inadequate subsample size	Tsuen Wan - Tsuen Wan Centre	23	22	1.02
Inadequate subsample size	Central & Western - Mid Levels East	22	22	1.03
Inadequate subsample size	Kwun Tong - Chun Cheung	13	12	1.03
Inadequate subsample size	Kwun Tong - Sau Mau Ping South	10	10	1.03

<b>Rank</b>	<b>Constituency</b>	<b>Number of respondents</b>	<b>Valid samples #</b>	<b>Mean (mask/day) *</b>
Inadequate subsample size	Tai Po - Yee Fu	24	24	1.03
Inadequate subsample size	Kwun Tong - Yau Tong West	13	13	1.04
Inadequate subsample size	Tuen Mun - So Kwun Wat	14	13	1.04
Inadequate subsample size	Yuen Long - Tin Heng	13	13	1.04
Inadequate subsample size	Kwun Tong - Kai Yip	17	17	1.04
Inadequate subsample size	Kowloon City - To Kwa Wan South	15	15	1.04
Inadequate subsample size	Yuen Long - Shap Pat Heung West	25	25	1.05
Inadequate subsample size	Southern - Wah Fu North	16	16	1.05
Inadequate subsample size	Southern - Wah Fu South	17	16	1.05
Inadequate subsample size	Tuen Mun - Kin Sang	22	22	1.05
Inadequate subsample size	Eastern - Fort Street	25	25	1.05
Inadequate subsample size	Eastern - Hing Tung	24	24	1.06
Inadequate subsample size	Kwai Tsing - Ching Fat	18	18	1.07
Inadequate subsample size	Kwai Tsing - Shing Hong	19	19	1.07
Inadequate subsample size	Tuen Mun - Hing Tsak	16	16	1.07
Inadequate subsample size	Kowloon City - Lok Man	17	17	1.07
Inadequate subsample size	Wan Chai - Hennessy	10	10	1.08
Inadequate subsample size	Sham Shui Po - Pik Wui	17	17	1.08
Inadequate subsample size	Tuen Mun - Yan Tin	9	9	1.08
Inadequate subsample size	Kwai Tsing - Kwai Luen	14	14	1.09
Inadequate subsample size	Yuen Long - Tin Shing	19	19	1.09
Inadequate subsample size	North - Fanling Town	28	28	1.09

<b>Rank</b>	<b>Constituency</b>	<b>Number of respondents</b>	<b>Valid samples #</b>	<b>Mean (mask/day) *</b>
Inadequate subsample size	Sha Tin - Yiu On	30	29	1.09
Inadequate subsample size	Kwun Tong - On Tat	5	5	1.10
Inadequate subsample size	Wong Tai Sin - Tung Tau	28	28	1.10
Inadequate subsample size	Yuen Long - Shing Yan	12	12	1.10
Inadequate subsample size	Sham Shui Po - Lai Chi Kok South	14	14	1.11
Inadequate subsample size	North - Yu Tai	14	14	1.11
Inadequate subsample size	Sham Shui Po - Fortune	11	11	1.11
Inadequate subsample size	Tai Po - Tai Yuen	20	20	1.12
Inadequate subsample size	Kwun Tong - Sheung Shun	13	13	1.12
Inadequate subsample size	Kowloon City - Hung Hom	10	10	1.13
Inadequate subsample size	Tuen Mun - Wu King	11	11	1.14
Inadequate subsample size	Tai Po - Fu Heng	18	18	1.14
Inadequate subsample size	Kwun Tong - Ting On	13	13	1.14
Inadequate subsample size	Eastern - Mount Parker	14	14	1.14
Inadequate subsample size	Central & Western - Sai Wan	22	22	1.15
Inadequate subsample size	Yuen Long - Fu Yan	13	13	1.15
Inadequate subsample size	Sha Tin - Hin Ka	20	20	1.16
Inadequate subsample size	Wong Tai Sin - Tsui Chuk & Pang Ching	19	19	1.16
Inadequate subsample size	North - Ching Ho	9	9	1.17
Inadequate subsample size	Tuen Mun - Sam Shing	16	15	1.17
Inadequate subsample size	Sha Tin - Heng On	19	19	1.18
Inadequate subsample size	Tuen Mun - Shan King	23	23	1.18

<b>Rank</b>	<b>Constituency</b>	<b>Number of respondents</b>	<b>Valid samples #</b>	<b>Mean (mask/day) *</b>
Inadequate subsample size	Kwun Tong - Sau Mau Ping Central	15	14	1.18
Inadequate subsample size	Yuen Long - Shap Pat Heung Central	28	28	1.18
Inadequate subsample size	Islands - Lantau	11	11	1.20
Inadequate subsample size	Wong Tai Sin - Ching Oi	28	28	1.20
Inadequate subsample size	Sai Kung - Tsui Lam	22	21	1.20
Inadequate subsample size	Wong Tai Sin - Fung Tak	19	18	1.21
Inadequate subsample size	Wong Tai Sin - Choi Wan West	12	12	1.21
Inadequate subsample size	Kwai Tsing - Cheung Hang	13	13	1.21
Inadequate subsample size	Eastern - Yue Wan	14	14	1.21
Inadequate subsample size	Sai Kung - Fu Nam	28	28	1.22
Inadequate subsample size	Yuen Long - Pek Long	13	12	1.22
Inadequate subsample size	Islands - Peng Chau & Hei Ling Chau	6	6	1.22
Inadequate subsample size	Tuen Mun - Tin King	17	16	1.24
Inadequate subsample size	Kwun Tong - Hing Tin	18	18	1.25
Inadequate subsample size	Wong Tai Sin - Ching On	10	10	1.25
Inadequate subsample size	North - Tin Ping West	16	16	1.26
Inadequate subsample size	Eastern - Aldrich Bay	23	23	1.26
Inadequate subsample size	Kwai Tsing - Cheung Ching	22	22	1.26
Inadequate subsample size	Yau Tsim Mong - Tai Kok Tsui South	10	10	1.28
Inadequate subsample size	Sha Tin - Lek Yuen	10	10	1.28
Inadequate subsample size	Tuen Mun - Po Tin	5	5	1.30
Inadequate subsample size	Kwai Tsing - On Yam	13	13	1.31

<b>Rank</b>	<b>Constituency</b>	<b>Number of respondents</b>	<b>Valid samples #</b>	<b>Mean (mask/day) *</b>
Inadequate subsample size	Central & Western - Centre Street	14	14	1.31
Inadequate subsample size	Kwai Tsing - Kwai Chung Estate North	10	10	1.36
Inadequate subsample size	Wong Tai Sin - Lung Tsui	13	13	1.37
Inadequate subsample size	Yuen Long - Yuet Yan	10	10	1.45
Inadequate subsample size	Kwai Tsing - Shek Lei North	7	7	1.48

<sup>#</sup> Excludes cases of "refuse to answer"

\* Numeric conversion as follows: "I do not use mask at all / already no mask to use=0 masks/day; 1 per more than 3 days=1/4 masks/day; 1 per 3 days=1/3 masks/day; 1 per 2 days=1/2 masks/day; 1 per day=1 masks/day; 2 per day=2 masks/day; 3 per day=3 masks/day; 4 per day=4 masks/day; more than 4 per day=5 masks/day."

## **Appendix 4**

### **Number of Masks by Constituency**

**Appendix 4: CHIS result of each constituency -**

"Number of [Masks Available for Use](#)" (Past 15 days data)

<b>Rank</b>	<b>Constituency</b>	<b>Number of respondents</b>	<b>Valid samples</b>	<b>Mean (pieces)</b>
1	Kowloon City - Kadoorie	47	47	37.3
2	Kowloon City - Prince	32	31	40.9
3	Yuen Long - Fairview Park	50	49	42.5
4	Tai Po - Sai Kung North	33	33	43.6
5	Eastern - Yan Lam	33	33	43.9
6	Sha Tin - Lee On	30	30	44.7
7	Kwun Tong - King Tin	50	48	45.6
8	Central & Western - Water Street	31	31	45.7
9	Eastern - Tai Koo Shing East	42	41	45.8
10	Southern - Chi Fu	48	48	46.9
11	Southern - South Horizons West	38	37	47.6
12	Eastern - Heng Fa Chuen	63	62	47.7
13	Sham Shui Po - Yau Yat Tsuen	33	33	47.8
14	Tai Po - Tai Po Kau	33	33	48.1
15	Sham Shui Po - Mei Foo North	43	43	48.4
16	Kwun Tong - Laguna City	59	59	48.6
17	Wong Tai Sin - Tin Keung	31	30	48.8
17	Tai Po - Shuen Wan	40	38	48.8
19	Sai Kung - Nam On	39	37	49.4
20	Central & Western - University	44	43	49.5
21	Wong Tai Sin - King Fu	47	47	49.7
22	Sha Tin - Chung On	33	32	51.8
22	North - Yan Shing	33	32	51.8
24	Tai Po - Old Market & Serenity	42	42	51.9
25	Tuen Mun - Hanford	38	37	52.0
26	Sham Shui Po - Cheung Sha Wan	35	35	52.1
27	Eastern - Nam Fung	47	47	52.2
28	Sha Tin - Di Yee	36	36	52.3
29	Islands - Tung Chung South	36	34	52.4
30	Sham Shui Po - Mei Foo Central	36	36	52.9
31	Kwun Tong - Hiu Lai	34	34	53.2
32	Sha Tin - Kam To	41	41	53.3
33	Yau Tsim Mong - Tai Kok Tsui North	31	30	53.7
34	Yuen Long - Shui Pin	31	30	54.1
34	Wong Tai Sin - Lung Sing	52	51	54.1
36	Tuen Mun - Fu Sun	33	33	54.2

Rank	Constituency	Number of respondents	Valid samples	Mean (pieces)
36	Tuen Mun - Prime View	40	39	54.2
38	Eastern - Fortress Hill	40	40	54.5
38	Southern - Aberdeen	36	36	54.5
38	Tsuen Wan - Discovery Park	38	38	54.5
38	Sha Tin - Ma On Shan Town Centre	41	41	54.5
42	Kwai Tsing - On Ho	35	34	54.8
43	Tai Po - Tai Wo	32	31	55.0
44	Tsuen Wan - Tsuen Wan West	47	46	55.4
45	Yuen Long - Kingswood South	35	35	55.6
46	Sha Tin - Tai Wai	37	36	55.8
47	Eastern - Shau Kei Wan	34	34	55.9
48	Kwai Tsing - Wai Ying	37	37	56.1
48	Kowloon City - Ho Man Tin	46	46	56.1
50	Sai Kung - Fu Kwan	36	36	56.3
51	Sha Tin - City One	59	59	56.8
52	Sha Tin - Wong Uk	42	42	57.0
53	Eastern - Lei King Wan	41	41	57.6
54	Yuen Long - Kingswood North	37	37	57.7
55	Sai Kung - Wan Hang	35	35	57.9
56	Eastern - Braemar Hill	40	39	58.1
57	Sai Kung - Yan Ying	38	38	58.2
58	Yau Tsim Mong - Charming	30	30	58.4
58	Sham Shui Po - Mei Foo South	43	42	58.4
60	Kowloon City - Whampoa West	43	42	58.8
61	Eastern - Tai Koo Shing West	41	40	59.0
62	Kowloon City - Whampoa East	31	31	59.8
63	North - Fanling South	45	45	59.9
64	Kwun Tong - Lai Ching	47	47	60.0
65	Sha Tin - Yu Yan	41	40	60.1
65	Sha Tin - Yue Shing	53	53	60.1
67	Sham Shui Po - Lai Chi Kok Central	39	39	60.2
67	Southern - South Horizons East	40	40	60.2
69	Sai Kung - O Tong	40	40	60.4
70	Sha Tin - Kam Ying	30	30	60.6
71	Sha Tin - Chun Fung	31	30	60.7
72	Tuen Mun - Siu Hong	31	31	60.9
73	Tsuen Wan - Tsuen Wan Rural	54	54	61.2
73	Eastern - Provident	31	31	61.2
75	Central & Western - Kwun Lung	32	32	61.4
76	Wan Chai - Victoria Park	30	30	61.5
76	Sai Kung - Kwan Po	41	41	61.5



Rank	Constituency	Number of respondents	Valid samples	Mean (pieces)
78	Yau Tsim Mong - Fu Pak	30	30	61.7
79	Sha Tin - Bik Woo	32	32	61.7
80	Kwai Tsing - Greenfield	50	49	62.1
81	Kwun Tong - Lam Tin	35	35	62.2
81	Sha Tin - Wu Kai Sha	59	59	62.2
83	Kwun Tong - To Tai	46	45	62.4
84	Wong Tai Sin - Chi Choi	37	37	62.7
85	Sha Tin - Fo Tan	38	38	62.8
86	Tuen Mun - Tsui Hing	50	50	63.1
87	Sha Tin - Hoi Nam	30	30	63.3
88	Tuen Mun - Siu Chi	41	38	64.2
89	Sai Kung - Wai King	56	55	64.4
89	Sai Kung - Kwong Ming	31	30	64.4
89	Kwai Tsing - Tsing Yi Estate	35	35	64.4
92	Kowloon City - Ma Tau Wai	32	31	64.6
93	Sha Tin - Sui Wo	49	49	65.0
94	Eastern - Kam Ping	34	34	65.8
95	Tuen Mun - Tuen Mun Town Centre	33	33	66.2
96	Tsuen Wan - Ma Wan	32	32	66.7
97	Eastern - Kornhill	39	39	67.0
98	Sai Kung - Wan Po North	48	48	67.5
99	Tsuen Wan - Tsuen Wan South	30	30	67.9
100	Tsuen Wan - Luk Yeung	39	37	68.1
101	Eastern - Sai Wan Ho	36	35	68.4
102	Sha Tin - Sha Tin Town Centre	39	38	68.6
103	Tsuen Wan - Hoi Bun	46	46	69.7
103	Sha Tin - Chun Ma	42	42	69.7
105	Tuen Mun - Siu Hei	30	30	71.1
106	Yuen Long - Fung Cheung	34	34	72.1
107	Tsuen Wan - Ting Sham	43	43	73.2
108	Sha Tin - On Tai	33	32	73.7
109	Kowloon City - Ma Hang Chung	32	32	74.1
110	Tuen Mun - Siu Tsui	38	36	76.1
111	Tsuen Wan - Lai To	30	30	76.9
Inadequate subsample size	Wong Tai Sin - Choi Hung	5	5	20.7
Inadequate subsample size	North - Sha Ta	5	5	22.7
Inadequate subsample size	Southern - Bays Area	4	4	24.4
Inadequate subsample size	Kwai Tsing - Lower Tai Wo Hau	7	7	29.3

<b>Rank</b>	<b>Constituency</b>	<b>Number of respondents</b>	<b>Valid samples</b>	<b>Mean (pieces)</b>
Inadequate subsample size	Wong Tai Sin - Tsz Wan West	12	12	30.3
Inadequate subsample size	Sham Shui Po - Shek Kip Mei	14	14	32.6
Inadequate subsample size	North - Queen's Hill	21	21	33.7
Inadequate subsample size	Sha Tin - Chung Tin	18	18	33.8
Inadequate subsample size	Sham Shui Po - Lai Chi Kok North	19	19	34.7
Inadequate subsample size	Tuen Mun - Yuet Wu	20	20	36.5
Inadequate subsample size	Islands - Lamma & Po Toi	13	13	36.5
Inadequate subsample size	Sha Tin - Sha Kok	10	10	36.8
Inadequate subsample size	Tsuen Wan - Cheung Shek	11	11	37.3
Inadequate subsample size	Islands - Yat Tung Estate North	9	9	37.5
Inadequate subsample size	Kowloon City - Kai Tak East	5	5	37.5
Inadequate subsample size	Kwai Tsing - Kwai Hing	15	14	37.5
Inadequate subsample size	North - Sheung Shui Rural	12	12	37.7
Inadequate subsample size	Tuen Mun - King Hing	12	12	38.2
Inadequate subsample size	Yuen Long - Shap Pat Heung East	8	8	38.3
Inadequate subsample size	Yuen Long - Tsz Yau	12	12	38.8
Inadequate subsample size	Sham Shui Po - So Uk	12	12	38.9
Inadequate subsample size	Wan Chai - Happy Valley	29	27	39.3
Inadequate subsample size	Sai Kung - Sai Kung Central	18	18	39.5
Inadequate subsample size	Sham Shui Po - Nam Shan, Tai Hang Tung & Tai Hang Sai	13	13	39.9
Inadequate subsample size	Central & Western - Peak	12	12	39.9
Inadequate subsample size	Sham Shui Po - Fu Cheong	17	16	40.1
Inadequate subsample size	Tuen Mun - Leung King	11	11	40.1
Inadequate subsample size	Yau Tsim Mong - Mong Kok West	12	12	40.2
Inadequate subsample size	Eastern - Fullview	21	21	40.2
Inadequate	Yuen Long - Wang Yat	7	7	40.9

<b>Rank</b>	<b>Constituency</b>	<b>Number of respondents</b>	<b>Valid samples</b>	<b>Mean (pieces)</b>
subsample size				
Inadequate subsample size	Wan Chai - Stubbs Road	14	14	41.4
Inadequate subsample size	Kwun Tong - Yau Tong East	7	7	41.4
Inadequate subsample size	Kowloon City - Ma Tau Kok	14	14	41.5
Inadequate subsample size	Eastern - Hing Man	11	11	41.9
Inadequate subsample size	Central & Western - Belcher	29	29	41.9
Inadequate subsample size	Islands - Discovery Bay	29	28	41.9
Inadequate subsample size	Sham Shui Po - Lung Ping & Sheung Pak Tin	19	19	42.2
Inadequate subsample size	Yuen Long - Ha Tsuen	13	12	42.3
Inadequate subsample size	Central & Western - Sai Ying Pun	27	26	42.3
Inadequate subsample size	Tai Po - Chung Ting	24	24	42.4
Inadequate subsample size	Sai Kung - Kin Ming	9	8	42.8
Inadequate subsample size	Kowloon City - Sheung Lok	18	18	43.0
Inadequate subsample size	Kwun Tong - Pak Nga	21	21	43.0
Inadequate subsample size	Yuen Long - Hung Fuk	4	4	43.1
Inadequate subsample size	Kowloon City - Lung Shing	15	15	43.5
Inadequate subsample size	Sha Tin - Lower Shing Mun	20	20	44.0
Inadequate subsample size	Kwun Tong - Lok Wah North	10	10	44.6
Inadequate subsample size	Eastern - Upper Yiu Tung	10	10	45.4
Inadequate subsample size	Sai Kung - Do Shin	29	29	45.7
Inadequate subsample size	Tai Po - Po Nga	28	28	45.8
Inadequate subsample size	Kowloon City - To Kwa Wan North	7	7	45.9
Inadequate subsample size	Central & Western - Castle Road	17	17	45.9
Inadequate subsample size	Islands - Cheung Chau	20	20	46.2
Inadequate subsample size	Kwun Tong - Lok Wah South	9	9	46.6
Inadequate subsample size	Sham Shui Po - Nam Cheong West	12	12	46.6

<b>Rank</b>	<b>Constituency</b>	<b>Number of respondents</b>	<b>Valid samples</b>	<b>Mean (pieces)</b>
Inadequate subsample size	Yuen Long - Kam Tin	29	29	46.7
Inadequate subsample size	Sai Kung - Hong King	26	26	46.8
Inadequate subsample size	Southern - Stanley & Shek O	24	24	47.0
Inadequate subsample size	Wong Tai Sin - Lung Sheung	19	19	47.2
Inadequate subsample size	Kwun Tong - Kwun Tong On Tai	10	10	47.3
Inadequate subsample size	Sha Tin - Keng Hau	19	19	47.4
Inadequate subsample size	Yuen Long - Yat Chak	8	8	47.4
Inadequate subsample size	Tuen Mun - Lok Tsui	27	27	47.4
Inadequate subsample size	Yau Tsim Mong - Kowloon Station	13	13	47.5
Inadequate subsample size	Sham Shui Po - Lei Cheng Uk	24	23	47.7
Inadequate subsample size	Kwai Tsing - Cheung On	28	27	47.7
Inadequate subsample size	Kowloon City - Hok Yuen Laguna Verde	26	26	47.7
Inadequate subsample size	North - Shing Fuk	19	19	48.2
Inadequate subsample size	Kwun Tong - Kwun Tong Central	17	17	48.2
Inadequate subsample size	Sham Shui Po - Lai Kok	11	11	48.4
Inadequate subsample size	Yuen Long - Chung Wah	6	6	48.5
Inadequate subsample size	Wan Chai - Southorn	16	16	48.6
Inadequate subsample size	Yuen Long - Tin Yiu	11	11	48.6
Inadequate subsample size	Kwun Tong - Sau Mau Ping North	20	20	48.7
Inadequate subsample size	Sha Tin - Lek Yuen	10	10	48.7
Inadequate subsample size	Yuen Long - Ping Shan North	10	10	48.8
Inadequate subsample size	Wong Tai Sin - Choi Wan South	12	12	49.0
Inadequate subsample size	Sai Kung - Hau Tak	19	19	49.0
Inadequate subsample size	Kwun Tong - Kowloon Bay	28	28	49.2
Inadequate subsample size	North - Shek Wu Hui	19	19	49.2
Inadequate	Tsuen Wan - Shek Wai Kok	8	7	49.3

<b>Rank</b>	<b>Constituency</b>	<b>Number of respondents</b>	<b>Valid samples</b>	<b>Mean (pieces)</b>
subsample size				
Inadequate subsample size	Sha Tin - Pok Hong	22	22	49.3
Inadequate subsample size	Sai Kung - Tak Ming	24	24	49.3
Inadequate subsample size	Sha Tin - Chui Tin	24	23	49.4
Inadequate subsample size	Wan Chai - Broadwood	16	15	49.4
Inadequate subsample size	Tsuen Wan - Lei Muk Shue West	11	11	49.5
Inadequate subsample size	Kwai Tsing - Tai Pak Tin East	11	11	49.6
Inadequate subsample size	Sham Shui Po - Nam Cheong North	4	4	49.7
Inadequate subsample size	Yau Tsim Mong - Tsim Sha Tsui Central	19	19	49.7
Inadequate subsample size	Central & Western - Shek Tong Tsui	24	24	49.9
Inadequate subsample size	Tuen Mun - Lung Mun	16	15	50.0
Inadequate subsample size	Wan Chai - Tai Fat Hau	17	17	50.1
Inadequate subsample size	Tsuen Wan - Lei Muk Shue East	13	13	50.2
Inadequate subsample size	North - Cheung Wah	20	20	50.2
Inadequate subsample size	Tuen Mun - Yau Oi North	18	18	50.2
Inadequate subsample size	Southern - Pokfulam	22	22	50.2
Inadequate subsample size	Wong Tai Sin - Chuk Yuen South	10	10	50.3
Inadequate subsample size	Kwun Tong - Ping Tin	25	25	50.5
Inadequate subsample size	Wong Tai Sin - Tung Mei	20	18	50.5
Inadequate subsample size	North - Fung Tsui	14	14	50.6
Inadequate subsample size	Wong Tai Sin - San Po Kong	30	29	50.7
Inadequate subsample size	Tai Po - Lam Tsuen Valley	31	29	51.0
Inadequate subsample size	Tuen Mun - Wu King	11	11	51.0
Inadequate subsample size	Kwai Tsing - Kwai Chung Estate South	8	7	51.1
Inadequate subsample size	Wan Chai - Tai Hang	17	16	51.3
Inadequate subsample size	Kwun Tong - Lower Ngau Tau Kok Estate	27	26	51.3

<b>Rank</b>	<b>Constituency</b>	<b>Number of respondents</b>	<b>Valid samples</b>	<b>Mean (pieces)</b>
Inadequate subsample size	Sham Shui Po - Nam Cheong East	20	19	51.4
Inadequate subsample size	Sham Shui Po - Un Chau	22	22	51.5
Inadequate subsample size	Kwai Tsing - Kwai Shing East Estate	13	13	51.5
Inadequate subsample size	Tuen Mun - Yau Oi South	14	14	51.6
Inadequate subsample size	Yau Tsim Mong - Yau Ma Tei South	25	25	51.6
Inadequate subsample size	Yau Tsim Mong - Mong Kok South	13	13	51.7
Inadequate subsample size	Yuen Long - Yuen Long Centre	12	11	51.8
Inadequate subsample size	Southern - Wah Kwai	25	25	51.8
Inadequate subsample size	Yuen Long - Nam Ping	8	8	52.1
Inadequate subsample size	Yuen Long - Chung Pak	9	9	52.1
Inadequate subsample size	Kwai Tsing - Upper Tai Wo Hau	12	12	52.1
Inadequate subsample size	Kwai Tsing - Tai Pak Tin West	10	9	52.1
Inadequate subsample size	Eastern - Tanner	22	22	52.1
Inadequate subsample size	Kowloon City - Sung Wong Toi	22	22	52.3
Inadequate subsample size	Yuen Long - Pat Heung South	26	26	52.5
Inadequate subsample size	Yau Tsim Mong - Mong Kok East	29	29	52.6
Inadequate subsample size	Yuen Long - Pat Heung North	18	18	52.6
Inadequate subsample size	Kwun Tong - Hong Lok	19	19	52.6
Inadequate subsample size	Kwai Tsing - Lai Wah	27	26	52.8
Inadequate subsample size	Kwun Tong - Sau Mau Ping South	10	9	52.8
Inadequate subsample size	Southern - Shek Yue	15	15	53.1
Inadequate subsample size	Sha Tin - Kwong Hong	14	14	53.1
Inadequate subsample size	Sai Kung - Sai Kung Islands	29	28	53.1
Inadequate subsample size	Wan Chai - Oi Kwan	22	22	53.2
Inadequate subsample size	Yau Tsim Mong - Yau Ma Tei North	18	18	53.2
Inadequate	Yau Tsim Mong - Tsim Sha Tsui West	10	10	53.3

<b>Rank</b>	<b>Constituency</b>	<b>Number of respondents</b>	<b>Valid samples</b>	<b>Mean (pieces)</b>
subsample size				
Inadequate subsample size	Tuen Mun - Fu Tai	25	25	53.5
Inadequate subsample size	Yuen Long - San Tin	11	11	53.6
Inadequate subsample size	Sha Tin - Wo Che Estate	25	25	53.7
Inadequate subsample size	Wong Tai Sin - Tsz Wan East	20	18	53.8
Inadequate subsample size	Kwun Tong - Yuet Wah	21	21	54.0
Inadequate subsample size	Islands - Mun Yat	10	10	54.1
Inadequate subsample size	Sha Tin - Tai Shui Hang	26	26	54.2
Inadequate subsample size	Wong Tai Sin - Lung Ha	20	19	54.3
Inadequate subsample size	Eastern - Kornhill Garden	28	28	54.3
Inadequate subsample size	Eastern - Wan Tsui	17	17	54.3
Inadequate subsample size	Kwai Tsing - Cho Yiu	29	29	54.5
Inadequate subsample size	Eastern - Fei Tsui	11	11	54.5
Inadequate subsample size	Yuen Long - Shap Pat Heung North	7	7	54.6
Inadequate subsample size	Yuen Long - Shui Wah	12	12	54.7
Inadequate subsample size	Kwun Tong - Shun Tin	10	10	54.9
Inadequate subsample size	Islands - Tung Chung Central	25	25	55.0
Inadequate subsample size	Sai Kung - Hang Hau West	28	28	55.1
Inadequate subsample size	Islands - Tung Chung North	27	27	55.3
Inadequate subsample size	Eastern - Yue Wan	14	14	55.3
Inadequate subsample size	Tsuen Wan - Allway	29	29	55.6
Inadequate subsample size	Kwai Tsing - Kwai Fong	12	12	55.6
Inadequate subsample size	Sha Tin - Fu Lung	29	29	55.7
Inadequate subsample size	Southern - Wong Chuk Hang	27	27	55.7
Inadequate subsample size	Yuen Long - Yuen Long Tung Tau	25	24	55.7
Inadequate subsample size	Tuen Mun - So Kwun Wat	14	13	55.7

<b>Rank</b>	<b>Constituency</b>	<b>Number of respondents</b>	<b>Valid samples</b>	<b>Mean (pieces)</b>
Inadequate subsample size	Kwai Tsing - Tsing Yi South	18	17	55.7
Inadequate subsample size	Kwun Tong - Tsui Ping	13	12	55.8
Inadequate subsample size	Sai Kung - Po Yee	18	18	55.8
Inadequate subsample size	Kowloon City - Hung Hom Bay	26	26	56.0
Inadequate subsample size	Yau Tsim Mong - Jordan West	19	18	56.0
Inadequate subsample size	Kwun Tong - Choi Tak	8	7	56.1
Inadequate subsample size	Kwai Tsing - Ching Fat	18	18	56.1
Inadequate subsample size	Tuen Mun - San King	21	21	56.4
Inadequate subsample size	Wong Tai Sin - Chuk Yuen North	20	20	56.4
Inadequate subsample size	Sha Tin - Heng On	19	19	56.4
Inadequate subsample size	Eastern - Lok Hong	21	21	56.4
Inadequate subsample size	Central & Western - Kennedy Town & Mount Davis	21	21	56.5
Inadequate subsample size	Yuen Long - Fung Nin	14	13	56.5
Inadequate subsample size	North - Choi Yuen	13	13	56.5
Inadequate subsample size	Eastern - Kai Hiu	10	10	56.6
Inadequate subsample size	Kowloon City - Hoi Sham	20	20	56.7
Inadequate subsample size	Eastern - Siu Sai Wan	16	16	56.7
Inadequate subsample size	Kwun Tong - Kwong Tak	21	20	56.8
Inadequate subsample size	Wan Chai - Causeway Bay	20	19	56.8
Inadequate subsample size	Kwai Tsing - Wah Lai	27	27	56.9
Inadequate subsample size	Tsuen Wan - Tak Wah	18	18	56.9
Inadequate subsample size	Sha Tin - Chui Ka	16	16	57.0
Inadequate subsample size	North - Wah Ming	11	11	57.1
Inadequate subsample size	Southern - Tin Wan	24	24	57.2
Inadequate subsample size	Tuen Mun - Butterfly	12	12	57.2
Inadequate	Tai Po - San Fu	31	29	57.3



<b>Rank</b>	<b>Constituency</b>	<b>Number of respondents</b>	<b>Valid samples</b>	<b>Mean (pieces)</b>
subsample size				
Inadequate subsample size	Central & Western - Sheung Wan	16	15	57.3
Inadequate subsample size	Eastern - Tsui Wan	16	16	57.3
Inadequate subsample size	Southern - Ap Lei Chau Estate	6	6	57.5
Inadequate subsample size	Sha Tin - Sun Tin Wai	17	17	57.5
Inadequate subsample size	Sai Kung - King Lam	16	16	57.5
Inadequate subsample size	Yuen Long - Ping Shan South	28	27	57.6
Inadequate subsample size	Yau Tsim Mong - Olympic	26	26	57.7
Inadequate subsample size	Tai Po - Wan Tau Tong	16	16	57.8
Inadequate subsample size	Yuen Long - Yuen Lung	28	28	57.8
Inadequate subsample size	Kwun Tong - Ping Shek	12	12	57.9
Inadequate subsample size	Kwai Tsing - Hing Fong	20	19	58.0
Inadequate subsample size	Sai Kung - Hang Hau East	30	29	58.1
Inadequate subsample size	Southern - Ap Lei Chau North	30	29	58.2
Inadequate subsample size	Kowloon City - Ka Wai	20	20	58.2
Inadequate subsample size	Sai Kung - Wan Po South	28	28	58.3
Inadequate subsample size	Central & Western - Tung Wah	21	21	58.4
Inadequate subsample size	Yau Tsim Mong - Tai Kok Tsui South	10	10	58.5
Inadequate subsample size	Sham Shui Po - Pik Wui	17	17	58.5
Inadequate subsample size	Yuen Long - Shing Yan	12	12	58.6
Inadequate subsample size	Yuen Long - Tin Heng	13	13	58.7
Inadequate subsample size	Wan Chai - Canal Road	10	10	58.8
Inadequate subsample size	Wong Tai Sin - Lok Fu	19	19	59.0
Inadequate subsample size	Kwun Tong - Yau Chui	17	17	59.1
Inadequate subsample size	Tai Po - Hong Lok Yuen	28	28	59.2
Inadequate subsample size	Kwun Tong - Po Lok	13	13	59.3

<b>Rank</b>	<b>Constituency</b>	<b>Number of respondents</b>	<b>Valid samples</b>	<b>Mean (pieces)</b>
Inadequate subsample size	Kwun Tong - Jordan Valley	17	17	59.4
Inadequate subsample size	Kwun Tong - Hip Hong	7	7	59.6
Inadequate subsample size	Kwai Tsing - Cheung Hong	23	23	59.7
Inadequate subsample size	Eastern - Tsui Tak	27	27	59.8
Inadequate subsample size	Kwai Tsing - Lai King	12	12	59.9
Inadequate subsample size	Kowloon City - Kai Tak North	8	8	59.9
Inadequate subsample size	Yau Tsim Mong - Mong Kok North	16	16	60.2
Inadequate subsample size	Sha Tin - Wan Shing	21	19	60.3
Inadequate subsample size	Kowloon City - Kowloon Tong	24	24	60.4
Inadequate subsample size	Islands - Peng Chau & Hei Ling Chau	6	6	60.7
Inadequate subsample size	Tai Po - Kwong Fuk & Plover Cove	14	14	60.7
Inadequate subsample size	Tuen Mun - Tuen Mun Rural	19	19	60.9
Inadequate subsample size	Tai Po - Wang Fuk	25	24	61.0
Inadequate subsample size	Kwai Tsing - Shek Yam	14	14	61.0
Inadequate subsample size	Eastern - City Garden	29	29	61.0
Inadequate subsample size	Kwai Tsing - On Yam	13	13	61.1
Inadequate subsample size	Eastern - Healthy Village	21	20	61.2
Inadequate subsample size	Kwai Tsing - Kwai Luen	14	14	61.6
Inadequate subsample size	Sham Shui Po - Po Lai	25	25	62.0
Inadequate subsample size	Sai Kung - Wai Yan	29	29	62.0
Inadequate subsample size	Sham Shui Po - Lai Chi Kok South	14	14	62.1
Inadequate subsample size	North - Luen Wo Hui	25	25	62.4
Inadequate subsample size	Kowloon City - Oi Chun	19	19	62.9
Inadequate subsample size	Sai Kung - Po Lam	29	29	62.9
Inadequate subsample size	Yuen Long - Ching King	20	20	63.1
Inadequate	Sha Tin - Jat Chuen	17	17	63.2

<b>Rank</b>	<b>Constituency</b>	<b>Number of respondents</b>	<b>Valid samples</b>	<b>Mean (pieces)</b>
subsample size				
Inadequate subsample size	Sha Tin - Kwong Yuen	11	11	63.3
Inadequate subsample size	Islands - Lantau	11	11	63.4
Inadequate subsample size	Yuen Long - Fu Yan	13	13	63.5
Inadequate subsample size	Yuen Long - Shui Oi	10	10	63.5
Inadequate subsample size	Yau Tsim Mong - Tai Nan	23	23	63.5
Inadequate subsample size	Kowloon City - Oi Man	20	18	63.7
Inadequate subsample size	Tai Po - Tai Yuen	20	19	63.7
Inadequate subsample size	Kwun Tong - Po Tat	6	6	64.2
Inadequate subsample size	Wong Tai Sin - Ching On	10	10	64.5
Inadequate subsample size	Yau Tsim Mong - East Tsim Sha Tsui & King's Park	27	27	64.6
Inadequate subsample size	Eastern - Fort Street	25	25	64.8
Inadequate subsample size	Eastern - A Kung Ngam	17	17	65.1
Inadequate subsample size	Yau Tsim Mong - Jordan North	4	4	65.3
Inadequate subsample size	Tuen Mun - Hing Tsak	16	16	65.3
Inadequate subsample size	Kwun Tong - Yau Lai	14	14	65.3
Inadequate subsample size	Kwai Tsing - Shing Hong	19	19	65.4
Inadequate subsample size	Tuen Mun - San Hui	19	19	65.4
Inadequate subsample size	Wong Tai Sin - Tsui Chuk & Pang Ching	19	19	65.5
Inadequate subsample size	Tsuen Wan - Clague Garden	25	25	65.6
Inadequate subsample size	Tai Po - Fu Ming Sun	25	25	65.7
Inadequate subsample size	Southern - Lei Tung I	20	20	66.0
Inadequate subsample size	Sha Tin - Tin Sum	13	13	66.3
Inadequate subsample size	Tuen Mun - Yan Tin	9	8	66.6
Inadequate subsample size	Tsuen Wan - Fuk Loi	10	10	66.6
Inadequate subsample size	Kwun Tong - Chun Cheung	13	12	66.7

<b>Rank</b>	<b>Constituency</b>	<b>Number of respondents</b>	<b>Valid samples</b>	<b>Mean (pieces)</b>
Inadequate subsample size	Wong Tai Sin - Choi Wan East	16	16	67.0
Inadequate subsample size	Yuen Long - Ping Shan Central	15	15	67.0
Inadequate subsample size	North - Wah Do	20	19	67.2
Inadequate subsample size	Sham Shui Po - Nam Cheong South	20	20	67.2
Inadequate subsample size	Kwai Tsing - Kwai Shing West Estate	11	11	67.3
Inadequate subsample size	Kwun Tong - Ting On	13	13	67.4
Inadequate subsample size	Sham Shui Po - Nam Cheong Central	4	4	67.5
Inadequate subsample size	Kwai Tsing - Shek Lei South	16	16	67.8
Inadequate subsample size	Tai Po - Yee Fu	24	24	67.9
Inadequate subsample size	Wong Tai Sin - Fung Tak	19	18	67.9
Inadequate subsample size	Eastern - Quarry Bay	24	24	67.9
Inadequate subsample size	Central & Western - Chung Wan	23	22	68.0
Inadequate subsample size	Yuen Long - Yiu Yau	15	15	68.0
Inadequate subsample size	Southern - Wah Fu South	17	16	68.6
Inadequate subsample size	Southern - Lei Tung II	15	15	68.7
Inadequate subsample size	Kowloon City - Kai Tak Central & South	8	8	68.8
Inadequate subsample size	Kwun Tong - Upper Ngau Tau Kok Estate	11	11	69.1
Inadequate subsample size	Tuen Mun - On Ting	14	14	69.5
Inadequate subsample size	Sai Kung - Hoi Chun	26	26	69.6
Inadequate subsample size	Tuen Mun - Tin King	17	16	69.7
Inadequate subsample size	Wan Chai - Tin Hau	18	18	69.8
Inadequate subsample size	Kwai Tsing - Cheung Ching	22	22	70.3
Inadequate subsample size	Sai Kung - Choi Kin	24	24	70.6
Inadequate subsample size	Kowloon City - Lok Man	17	17	70.6
Inadequate subsample size	Yuen Long - Pek Long	13	12	70.6
Inadequate	Sai Kung - Tsui Lam	22	21	71.3

<b>Rank</b>	<b>Constituency</b>	<b>Number of respondents</b>	<b>Valid samples</b>	<b>Mean (pieces)</b>
subsample size				
Inadequate subsample size	North - Yu Tai	14	14	71.5
Inadequate subsample size	Sham Shui Po - Ha Pak Tin	18	18	71.6
Inadequate subsample size	Yau Tsim Mong - Jordan South	14	14	71.8
Inadequate subsample size	Sai Kung - Pak Sha Wan	24	24	71.9
Inadequate subsample size	Kwun Tong - On Tat	5	5	72.0
Inadequate subsample size	Sai Kung - Sheung Tak	20	18	72.2
Inadequate subsample size	Tai Po - Tai Po Central	23	23	72.2
Inadequate subsample size	Kwun Tong - Yau Tong West	13	13	72.3
Inadequate subsample size	Southern - Wah Fu North	16	16	72.7
Inadequate subsample size	Tsuen Wan - Tsuen Wan Centre	23	22	72.8
Inadequate subsample size	Wong Tai Sin - Fung Wong	22	21	73.3
Inadequate subsample size	Tai Po - Tai Po Hui	8	8	73.3
Inadequate subsample size	Yuen Long - Tin Shing	19	19	73.5
Inadequate subsample size	Yau Tsim Mong - Cherry	15	15	73.8
Inadequate subsample size	Eastern - Lower Yiu Tung	16	15	73.8
Inadequate subsample size	Central & Western - Mid Levels East	22	22	74.1
Inadequate subsample size	Wong Tai Sin - Choi Wan West	12	12	74.3
Inadequate subsample size	Yuen Long - Shap Pat Heung West	25	25	75.0
Inadequate subsample size	North - Tin Ping East	21	20	75.2
Inadequate subsample size	Kowloon City - To Kwa Wan South	15	14	75.6
Inadequate subsample size	Central & Western - Centre Street	14	14	75.9
Inadequate subsample size	Wong Tai Sin - Wang Tau Hom	15	15	76.1
Inadequate subsample size	Kwun Tong - On Lee	10	10	76.3
Inadequate subsample size	Tuen Mun - Po Tin	5	5	76.5
Inadequate subsample size	Tsuen Wan - Yeung Uk Road	20	20	77.0

<b>Rank</b>	<b>Constituency</b>	<b>Number of respondents</b>	<b>Valid samples</b>	<b>Mean (pieces)</b>
Inadequate subsample size	North - Ching Ho	9	9	78.3
Inadequate subsample size	Tuen Mun - Kin Sang	22	21	78.5
Inadequate subsample size	Sha Tin - Shui Chuen O	7	6	78.7
Inadequate subsample size	Sai Kung - Fu Nam	28	28	80.2
Inadequate subsample size	Kwai Tsing - Cheung Hang	13	13	80.9
Inadequate subsample size	Kwun Tong - Kai Yip	17	17	81.1
Inadequate subsample size	Sha Tin - Yiu On	30	29	81.5
Inadequate subsample size	Central & Western - Sai Wan	22	22	83.5
Inadequate subsample size	Kowloon City - Hung Hom	10	10	84.2
Inadequate subsample size	Wong Tai Sin - Ching Oi	28	28	84.7
Inadequate subsample size	Sha Tin - Hin Ka	20	20	85.0
Inadequate subsample size	Wan Chai - Hennessy	10	10	85.2
Inadequate subsample size	Eastern - Hing Tung	24	24	86.1
Inadequate subsample size	Yuen Long - Yuet Yan	10	10	86.2
Inadequate subsample size	North - Fanling Town	28	28	87.6
Inadequate subsample size	Tuen Mun - Shan King	23	23	87.8
Inadequate subsample size	Wong Tai Sin - Tung Tau	28	28	87.8
Inadequate subsample size	Wan Chai - Jardine's Lookout	15	15	88.3
Inadequate subsample size	Kwun Tong - Sheung Shun	13	13	88.4
Inadequate subsample size	Kwai Tsing - Kwai Chung Estate North	10	10	90.6
Inadequate subsample size	Tai Po - Fu Heng	18	18	92.0
Inadequate subsample size	Tuen Mun - Sam Shing	16	15	92.2
Inadequate subsample size	Kwun Tong - Sau Mau Ping Central	15	14	92.5
Inadequate subsample size	Eastern - Aldrich Bay	23	23	93.4
Inadequate subsample size	Kwun Tong - Hing Tin	18	18	93.6
Inadequate	Kwai Tsing - Shek Lei North	7	6	94.2

<b>Rank</b>	<b>Constituency</b>	<b>Number of respondents</b>	<b>Valid samples</b>	<b>Mean (pieces)</b>
subsample size				
Inadequate subsample size	Yuen Long - Shap Pat Heung Central	28	28	94.3
Inadequate subsample size	Eastern - Mount Parker	14	14	96.4
Inadequate subsample size	Sham Shui Po - Fortune	11	11	102.5
Inadequate subsample size	Wong Tai Sin - Lung Tsui	13	13	113.1
Inadequate subsample size	North - Tin Ping West	16	16	124.4