



HONG KONG PUBLIC OPINION RESEARCH INSTITUTE
香港民意研究所

Hong Kong Public Opinion Program of Hong Kong Public Opinion Research Institute

“Community Health Information System” Report No. 6

Data Period: April 20 to May 5, 2020

Release Date: May 8, 2020

Copyright of this report was generated by the Hong Kong Public Opinion Program (HKPOP) and opened to the world. HKPOP proactively promotes open data, open technology and the free flow of ideas, knowledge and information. The predecessor of HKPOP was the Public Opinion Programme at The University of Hong Kong (HKUPOP). “HKPOP” or “POP” in this publication may refer to HKPOP or HKUPOP as the case may be.

Table of Contents

| | Page |
|--|------|
| Survey Report | |
| Research Background | 2 |
| Data Coverage Periods | 2 |
| Contact Information | 4 |
| Explanation of Data Analysis | 4 |
| Survey Results | 5 |
| Part One Mask Reserve | 5 |
| Part Two Online Screen Captures of CHIS | 11 |
| | |
| Appendix 1 Supplementary Information on CHIS Interval Values | 13 |
| Appendix 2 Mask Reserve by Constituency | 15 |
| Appendix 3 Mask Usage by Constituency | 33 |
| Appendix 4 Number of Masks by Constituency | 51 |

Research Background

In view of the outbreak of Novel Coronavirus (also known as "Wuhan Pneumonia") in late January 2020, the Hong Kong Public Opinion Program (HKPOP) under the Hong Kong Public Opinion Research Institute (HKPORI) kick-started the "Community Democracy Project: Community Health Module" or "Community Health Project" using a PopPanel survey design to study the public's views on the epidemic and the Government's relevant policies using small communities such as housing estates as the unit of analysis. The study covers people's views on their perceived chance of contracting pneumonia, appraisal on the government's handling of the disease, impacts of border closure, calls for strike by frontline medical staff, community outbreak, home-working conditions and their general use of face masks. The special feature of the Community Health Project is the lowering of respondents' age bracket to 12 years old, in order to obtain more comprehensive samples.

As the epidemic developed, on February 2, 2020, HKPOP engaged Professor P.C. Lai from the Department of Geography at The University of Hong Kong and Professor Paulina Wong from the Science Unit at Lingnan University to build the "**Community Health Information System**" (CHIS) to present survey data and relevant information using a geographic information systems (GIS) down to different community levels. Survey data, like peoples' possession of protective masks, their need for anti-epidemic commodities and so on, is processed using a 15-day rolling method to begin with, and presented alongside with other health and geographical information. HKPOP started to collect and collate CHIS survey data via its online survey platforms on February 2, 2020 and then displayed them on a GIS map accessible via its website at <http://www.pori.hk/> starting from February 18. While this map was updated almost every working day, HKPOP compiled written CHIS Reports every now and then as snapshots of CHIS findings. A total of six CHIS Reports including this one have been compiled.

CHIS Reports No. 1, 2, 3, 4 and 5 were released on March 3, 6, 13, 20 and April 27 respectively. While the coronavirus epidemic in Hong Kong has subsided and no more local inflected case for over 10 days, the strong demand for masks in society seems to alleviate at the same time. Besides, the government has recently announced some new epidemic prevention measures on May 5 including the distribution of free and reusable masks to Hong Kong people, therefore HKPOP has decided to stop our survey on mask reserve and usage after May 5 and this CHIS Report No. 6 will also be the last report of its series. It is worth noting that the contents of these reports only cover the results of certain CHIS survey questions within certain survey periods, while the dynamic data displayed in the CHIS map was updated very frequently up to May 5. The purpose of these reports is mainly for archiving snapshots taken at specific time. Since mid-March, the CHIS map has also included the information of more than 160 District Council constituencies covered by the "Community Democracy" Project of HKPOP.

Data Coverage Periods

While this CHIS map was updated almost every working day, six CHIS Reports including this one have been compiled as of this date. CHIS Report No. 1 took three snapshots of CHIS rolling data (spanning 15 continuous calendar days) and the data collection periods were February 2 to 17, February 5 to 20 and February 16 to March 2. In CHIS Report No. 2, one more set of rolling data covering February 19 to March 5 was added. The CHIS Report No. 3 covered the rolling data from February 26 to March 12, including two questions which were stopped on March 10. The CHIS Report No. 4 covered the rolling data from March 4 to 19 while Report No. 5 covered the rolling data from April 9 to 24. This CHIS Report No. 6 covers the rolling data from April 20 to May 5 (past 15 days). For easy reference, Table 1 gives the data period of each question covered by CHIS up to May 5, while Table 2 documents the upload time of our CHIS map, along with questions covered, their sample size in each update, as well as which CHIS print reports have carried the findings.

Table 1 Data coverage period for CHIS survey questions

| Question | Wordings / Descriptions | Data coverage period | CHIS print report |
|----------|---|-------------------------------------|-----------------------|
| Q1 | How long can you rely on your current face mask reserve? | February 2, 1500 to May 5, 1500 | No. 1, 2, 3, 4, 5 & 6 |
| Q2 | How would you describe your usage of face mask? Please try to use past 7 days as your reference. | February 18, 1500 to May 5, 1500 | No. 2, 3, 4, 5 & 6 |
| Q3 | Which of the following anti-epidemic materials do you need most now? | February 4, 1500 to March 3, 1500 | No. 1 & 2 |
| Q4 | How long can you rely on your current ethyl alcohol reserve? | February 18, 1500 to March 10, 1500 | No. 3 |
| Q5 | How long can you rely on your current hand sanitizer reserve? | February 18, 1500 to March 10, 1500 | No. 3 |
| Q1*Q2 | Number of masks available for use (computed using results of Q1 and Q2, not directly collected from survey) | February 18, 1500 to May 5, 1500 | No. 3, 4, 5 & 6 |

Table 2 CHIS data release dates and data coverage periods

| CHIS website update | Questions shown on CHIS | Data coverage period of questions (normally last 15 days) | Sample size | Presented in reports |
|---------------------|-------------------------|---|-------------|----------------------|
| February 18, 1300 | Q1 | February 2, 1500 to February 17, 1500 | 21,337 | No. 1 & 2 |
| February 20, 0900 | Q1, Q3 | February 4, 1500 to February 19, 1500 | 22,959 | |
| February 21, 0900 | Q1, Q3 | February 5, 1500 to February 20, 1500 | 20,495 | No. 1 & 2 |
| February 22, 0900 | Q1, Q3 | February 6, 1500 to February 21, 1500 | 21,592 | |
| February 25, 0900 | Q1, Q3 | February 9, 1500 to February 24, 1500 | 21,912 | |
| February 26, 0900 | Q1, Q3 | February 10, 1500 to February 25, 1500 | 21,992 | |
| February 27, 0900 | Q1, Q3 | February 11, 1500 to February 26, 1500 | 22,880 | |
| February 28, 0900 | Q1, Q3 | February 12, 1500 to February 27, 1500 | 21,900 | |
| February 29, 0900 | Q1, Q3 | February 13, 1500 to February 28, 1500 | 19,417 | |
| March 3, 0900 | Q1, Q3 | February 16, 1500 to March 2, 1500 | 17,547 | No. 1 & 2 |
| March 4, 0900 | Q1, Q3 | February 17, 1500 to March 3, 1500 | 17,468 | |
| March 5, 0900 | Q1, Q2, Q4, Q5 | February 18, 1500 to March 4, 1500 | 18,957 | |
| March 5, 2300 | Q1, Q2, Q4, Q5 | February 19, 1500 to March 5, 1500 | 17,609 | No. 2 |
| March 6, 2300 | Q1, Q2, Q4, Q5 | February 20, 1500 to March 6, 1500 | 17,481 | |
| March 9, 2300 | Q1, Q2, Q4, Q5 | February 23, 1500 to March 9, 1500 | 15,174 | |
| March 10, 2300 | Q1, Q2 | February 24, 1500 to March 10, 1500 | 15,083 | |
| | Q4, Q5 | February 24, 1500 to March 10, 1500 | 15,083 | No. 3 |
| March 11, 2300 | Q1, Q2 | February 25, 1500 to March 11, 1500 | 16,544 | |
| | Q4, Q5 | February 25, 1500 to March 10, 1500 | 12,267 | |
| March 12, 2300 | Q1, Q2 | February 26, 1500 to March 12, 1500 | 15,685 | No. 3 |
| | Q4, Q5 | February 26, 1500 to March 10, 1500 | 11,848 | |
| March 13, 2300 | Q1, Q2 | February 27, 1500 to March 13, 1500 | 15,790 | |
| | Q4, Q5 | February 27, 1500 to March 10, 1500 | 11,795 | |
| March 16, 2300 | Q1, Q1*Q2 | February 28, 1500 to March 16, 1500 | 15,899 | |
| March 18, 2300 | Q1, Q1*Q2 | March 3, 1500 to March 18, 1500 | 17,299 | |
| March 19, 2300 | Q1, Q1*Q2 | March 4, 1500 to March 19, 1500 | 15,758 | No. 4 |
| March 20, 1900 | Q1, Q1*Q2 | March 5, 1500 to March 20, 1500 | 16,544 | |
| March 23, 1900 | Q1, Q1*Q2 | March 8, 1500 to March 23, 1500 | 16,733 | |
| March 24, 1900 | Q1, Q1*Q2 | March 9, 1500 to March 24, 1500 | 16,773 | |
| March 25, 1900 | Q1, Q1*Q2 | March 10, 1500 to March 25, 1500 | 17,917 | |
| March 26, 1900 | Q1, Q1*Q2 | March 11, 1500 to March 26, 1500 | 16,324 | |
| March 27, 1900 | Q1, Q1*Q2 | March 12, 1500 to March 27, 1500 | 15,774 | |
| March 30, 1900 | Q1, Q1*Q2 | March 15, 1500 to March 30, 1500 | 15,436 | |
| March 31, 1900 | Q1, Q1*Q2 | March 16, 1500 to March 31, 1500 | 15,415 | |
| April 1, 1900 | Q1, Q1*Q2 | March 17, 1500 to April 1, 1500 | 16,554 | |
| April 2, 1900 | Q1, Q1*Q2 | March 18, 1500 to April 2, 1500 | 15,079 | |

| | | | | |
|----------------|-----------|----------------------------------|--------|-------|
| April 3, 1900 | Q1, Q1*Q2 | March 19, 1500 to April 3, 1500 | 14,880 | |
| April 6, 1900 | Q1, Q1*Q2 | March 22, 1500 to April 6, 1500 | 13,261 | |
| April 7, 1900 | Q1, Q1*Q2 | March 23, 1500 to April 7, 1500 | 13,220 | |
| April 8, 1900 | Q1, Q1*Q2 | March 24, 1500 to April 8, 1500 | 14,998 | |
| April 9, 1900 | Q1, Q1*Q2 | March 25, 1500 to April 9, 1500 | 13,821 | |
| April 14, 1900 | Q1, Q1*Q2 | March 30, 1500 to April 14, 1500 | 13,668 | |
| April 15, 1900 | Q1, Q1*Q2 | March 31, 1500 to April 15, 1500 | 13,667 | |
| April 16, 1900 | Q1, Q1*Q2 | April 1, 1500 to April 16, 1500 | 11,318 | |
| April 17, 1900 | Q1, Q1*Q2 | April 2, 1500 to April 17, 1500 | 10,745 | |
| April 20, 1900 | Q1, Q1*Q2 | April 5, 1500 to April 20, 1500 | 10,334 | |
| April 21, 1900 | Q1, Q1*Q2 | April 6, 1500 to April 21, 1500 | 12,525 | |
| April 22, 1900 | Q1, Q1*Q2 | April 7, 1500 to April 22, 1500 | 13,183 | |
| April 23, 1900 | Q1, Q1*Q2 | April 8, 1500 to April 23, 1500 | 10,880 | |
| April 24, 1900 | Q1, Q1*Q2 | April 9, 1500 to April 24, 1500 | 10,439 | No. 5 |
| April 27, 1900 | Q1, Q1*Q2 | April 12, 1500 to April 27, 1500 | 10,440 | |
| April 28, 1900 | Q1, Q1*Q2 | April 13, 1500 to April 28, 1500 | 12,284 | |
| April 29, 1900 | Q1, Q1*Q2 | April 14, 1500 to April 29, 1500 | 12,763 | |
| May 5, 1900 | Q1, Q1*Q2 | April 20, 1500 to May 5, 1500 | 13,198 | No. 6 |

Contact Information

Table 3 Contact information:

| | |
|-------------------|--|
| Survey method | Online Survey |
| Target population | HKPOP Panel samples, namely Hong Kong People Representative Panel (Probability-based Panel) and Hong Kong People Volunteer Panel (Non-probability-based Panel) |
| Data period | April 20, 1500 to May 5, 1500 (past 15 days) |
| Total sample size | 13,198 |

Explanation of Data Analysis

The CHIS data is processed and presented in the following manner:

1. The samples from "Hong Kong People Representative Panel" and "Hong Kong People Volunteer Panel" who responded to the question of "mask reserve" is first screened for the past 15 days;
2. Unlike other opinion questions, the data of the CHIS comes from all samples of the Hong Kong People Representative Panel and Hong Kong People Volunteer Panel within a certain survey period, and not adjusted by any weighting.
3. The question on "mask reserve" is processed as follows:
 - a. Calculate and pair up the mean values of "reserve" for individual constituency areas, then divide all values into 6 groups according to the natural breaks classification method of geographic information systems (GIS) designed for easy appreciation by the general public, with specific separation values and representations by different colors in the map, to reflect the relative scarcity and abundance of mask reserve in that area. The colors used for the six intervals are as follows:
 - First interval: red
 - Second interval: orange
 - Third interval: yellow
 - Fourth interval: green
 - Fifth interval: turquoise
 - Sixth interval: blue
 - b. If the valid sample from a certain constituency area is less than 30, the information is treated as "missing" and no colour pairing will be made or displayed.
4. For detailed interval values, please refer to Appendix 1.

Survey Results

Part One Mask Reserve

The CHIS tracked people's **mask reserve** since it was launched. As of 3pm of May 5, overall speaking, Hong Kong people's average mask reserve stands at 64.9 days (Table 4). Among 18 districts, Islands District has the smallest reserve (60.3 days) and Tsuen Wan District has the biggest reserve (67.5 days; Table 5).

In terms of 452 constituency areas, excluding those with valid samples of less than 30, the bottom five constituencies with the smallest amount of mask reserves, in a relative sense, are Sai Ying Pun in Central & Western District (53.2 days), Yan Lam in Eastern District (53.9 days), Lower Ngau Tau Kok Estate in Kwun Tong (54.3 days), Tai Wo in Tai Po (55.1 days) and Chung Tin in Sha Tin (55.7 days), while the top five constituencies with the biggest amount of mask reserves, in a relative sense, are On Ho in Kwai Tsing (78.2 days), Quarry Bay in Eastern District (77.8 days), Fu Lung in Sha Tin (77.6 days), Kam Ping in Eastern District (77.5 days) and Ma Wan in Tsuen Wan (77.4 days). Please refer to Appendix 2 for details.

Table 4 "How long can you rely on your current face mask reserve?" – overall results:

| | <u>20/4-5/5/20</u> | |
|-------------------------------------|--------------------|-----------------------------|
| | Frequency | Percentage (Base=13,173) |
| No reserve at all / already no mask | 26 | 0.2% |
| 1 – 2 day(s) | 17 | 0.1% |
| 3 – 4 days | 18 | 0.1% |
| 5 – 6 days | 25 | 0.2% |
| 1 week | 125 | 0.9% |
| 2 weeks | 347 | 2.6% |
| 3 weeks | 414 | 3.1% |
| 1 month | 2,102 | 16.0% |
| 1.5 months | 1,744 | 13.2% |
| 2 months | 3,813 | 28.9% |
| 3 months | 2,348 | 17.8% |
| Over 3 months | 2,110 | 16.0% |
| Others | 21 | 0.2% |
| Don't know / hard to say | 63 | 0.5% |
| Total | 13,173 | 100.0% |
| Mean (days)* | 64.9 days | |
| Standard error of the mean | 0.28 | |
| Median | 60.0 | |
| <i>Refuse to answer</i> | 25 | |

* Numeric conversion as follows: "No reserve at all / already no mask=0.0 days; 1–2 days=1.5 days; 3–4 days=3.5 days; 5–6 days=5.5 days; 1 week=7.0 days; 2 weeks=14.0 days; 3 weeks=21.0 days; 1 month=30.0 days; 1.5 months=45 days; 2 months=60 days; 3 months=90 days, over 3 months=120 days; don't know/hard to say are excluded."

Table 5 "How long can you rely on your current face mask reserve?" – result by District Council

| Rank | District Council | Number of respondents | Valid samples # | Mean (days) * |
|------|---------------------|-----------------------|-----------------|---------------|
| 1 | Islands | 238 | 235 | 60.3 |
| 2 | Kwai Tsing | 762 | 757 | 62.9 |
| 3 | Wong Tai Sin | 678 | 671 | 63.7 |
| 3 | Sham Shui Po | 672 | 669 | 63.7 |
| 5 | Tuen Mun | 894 | 884 | 63.8 |
| 6 | North | 433 | 429 | 63.9 |
| 7 | Kwun Tong | 998 | 988 | 64.1 |
| 8 | Yuen Long | 942 | 934 | 64.3 |
| 9 | Kowloon City | 726 | 718 | 64.5 |
| 9 | Southern | 523 | 517 | 64.5 |
| 11 | Tai Po | 644 | 635 | 64.7 |
| 12 | Wan Chai | 303 | 299 | 65.2 |
| 13 | Sha Tin | 1,491 | 1,486 | 65.4 |
| 14 | Central and Western | 459 | 456 | 65.7 |
| 15 | Eastern | 1,203 | 1,195 | 66.1 |
| 16 | Yau Tsim Mong | 481 | 478 | 66.3 |
| 17 | Sai Kung | 1,073 | 1,063 | 67.3 |
| 18 | Tsuen Wan | 678 | 675 | 67.5 |

Excludes cases of "don't know / hard to say" and "refuse to answer"

* Numeric conversion as follows: "No reserve at all / already no mask=0.0 days; 1-2 days=1.5 days; 3-4 days=3.5 days; 5-6 days=5.5 days; 1 week=7.0 days; 2 weeks=14.0 days; 3 weeks=21.0 days; 1 month=30.0 days; 1.5 months=45 days; 2 months=60 days; 3 months=90 days, over 3 months=120 days; don't know/hard to say are excluded."

Closely related to mask reserve, the CHIS also tracked people's mask usage. As of 3pm of May 5, overall speaking, Hong Kong people's average mask usage stands at 0.91 mask per day (Table 6). Among 18 districts, Islands District has the lowest usage rate (0.84 per day) and Kwai Tsing District has the highest usage rate (0.96 per day; Table 7).

In terms of 452 constituency areas, excluding those with valid samples of less than 30, the bottom five constituencies with the lowest mask usage rate, in a relative sense, are Water Street in Central & Western District (0.66 per day), Happy Valley in Wan Chai (0.67 per day), Lam Tsuen Valley in Tai Po (0.69 per day), Kam Tin in Yuen Long (0.69 per day) and Lee On in Sha Tin (0.69 per day), while the top five constituencies with the higher mask usage rate, in a relative sense, are Hoi Nam in Sha Tin (1.17 per day), Shap Pat Heung Central in Yuen Long (1.16 per day), Ching Oi in Wong Tai Sin (1.16 per day), Tuen Mun Town Centre in Tuen Mun (1.14 per day) and Lai To in Tsuen Wan (1.13 per day). Please refer to Appendix 3 for details.

Table 6 "How would you describe your usage of face mask? Please try to use past 7 days as your reference." – overall result:

| | <u>20/4-5/5/20</u> | |
|---|--------------------|-----------------------------|
| | Frequency | Percentage (Base=13,152) |
| I do not use mask at all / already no mask to use | 58 | 0.4% |
| 1 mask for more than 3 days | 916 | 7.0% |
| 1 mask for 3 days | 1,146 | 8.7% |
| 1 mask for 2 days | 2,481 | 18.9% |
| 1 mask per day | 7,196 | 54.7% |
| 2 masks per day | 985 | 7.5% |
| 3 masks per day | 153 | 1.2% |
| 4 masks per day | 43 | 0.3% |
| More than 4 masks per day | 32 | 0.2% |
| Others | 79 | 0.6% |
| Don't know / hard to say | 63 | 0.5% |
| Total | 13,152 | 100.0% |
| Mean* | 0.91 mask per day | |
| Standard error of the mean | <0.01 | |
| Median | 1.00 | |
| <i>Refuse to answer</i> | 46 | |

* Numeric conversion as follows: "I do not use mask at all / already no mask to use=0 masks/day; 1 per more than 3 days=1/4 masks/day; 1 per 3 days=1/3 masks/day; 1 per 2 days=1/2 masks/day; 1 per day=1 masks/day; 2 per day=2 masks/day; 3 per day=3 masks/day; 4 per day=4 masks/day; more than 4 per day=5 masks/day."

Table 7 "How would you describe your usage of face mask? Please try to use past 7 days as your reference." – result by District Council

| Rank | District Council | Number of respondents | Valid samples # | Mean (mask/day) * |
|------|---------------------|-----------------------|-----------------|-------------------|
| 1 | Islands | 238 | 234 | 0.84 |
| 1 | Central and Western | 459 | 454 | 0.84 |
| 1 | Wan Chai | 303 | 297 | 0.84 |
| 4 | Southern | 523 | 518 | 0.85 |
| 5 | Eastern | 1,203 | 1,181 | 0.87 |
| 6 | Tai Po | 644 | 634 | 0.88 |
| 6 | Yau Tsim Mong | 481 | 474 | 0.88 |
| 6 | Sham Shui Po | 672 | 662 | 0.88 |
| 9 | Kowloon City | 726 | 716 | 0.89 |
| 10 | Kwun Tong | 998 | 982 | 0.91 |
| 11 | Sha Tin | 1,491 | 1,477 | 0.92 |
| 11 | Sai Kung | 1,073 | 1,057 | 0.92 |
| 11 | North | 433 | 430 | 0.92 |
| 14 | Yuen Long | 942 | 930 | 0.94 |
| 15 | Wong Tai Sin | 678 | 665 | 0.95 |
| 15 | Tsuen Wan | 678 | 672 | 0.95 |
| 15 | Tuen Mun | 894 | 875 | 0.95 |
| 18 | Kwai Tsing | 762 | 752 | 0.96 |

Excludes cases of "refuse to answer"

* Numeric conversion as follows: "I do not use mask at all / already no mask to use=0 masks/day; 1 per more than 3 days=1/4 masks/day; 1 per 3 days=1/3 masks/day; 1 per 2 days=1/2 masks/day; 1 per day=1 masks/day; 2 per day=2 masks/day; 3 per day=3 masks/day; 4 per day=4 masks/day; more than 4 per day=5 masks/day."

If we link up the number of days of people's mask reserve with their mask usage, we can then compute the "number of masks available for use". As of 3pm of May 5, Hong Kong people on average have 60.0 masks available for use in general (Table 8), with Islands District having the least (50.2 pieces) and Tsuen Wan District having the most (66.8 pieces) among 18 districts (Table 9).

In terms of 452 constituency areas, excluding those with valid samples of less than 30, the bottom five constituencies with the least masks available for use, in a relative sense, are Happy Valley in Wan Chai (40.1 pieces), Water Street in Central & Western District (41.0 pieces), Fairview Park in Yuen Long (42.9 pieces), Chung Tin in Sha Tin (43.2 pieces) and Kadoorie in Kowloon City (44.4 pieces), while the top five constituencies with the most masks available for use, in a relative sense, are Yiu On in Sha Tin (89.4 pieces), Tung Tau in Wong Tai Sin (82.4 pieces), Lai To in Tsuen Wan (80.8 pieces), On Chun in Kowloon City (80.6 pieces) and Hoi Nam in Sha Tin (80.4 pieces). Please refer to Appendix 4 for details.

Table 8 "Number of masks available for use" – overall result

| | <u>20/4-5/5/20</u> | |
|----------------------------|--------------------|-----------------------------|
| | Frequency | Percentage (Base=13,144) |
| 0-14 | 1,163 | 8.8% |
| 15-29 | 1,835 | 14.0% |
| 30-44 | 2,529 | 19.2% |
| 45-59 | 1,397 | 10.6% |
| 60-89 | 2,524 | 19.2% |
| 90-119 | 1,435 | 10.9% |
| 120 or more | 2,067 | 15.7% |
| Others | 85 | 0.6% |
| Don't know / Hard to say | 109 | 0.8% |
| Total | 13,144 | 100.0% |
| Mean (pieces) | 60.0 | |
| Standard error of the mean | 0.47 | |
| Median | 45.0 | |
| <i>Refuse to answer</i> | 54 | |

Table 9 "Number of masks available for use" – result by District Council

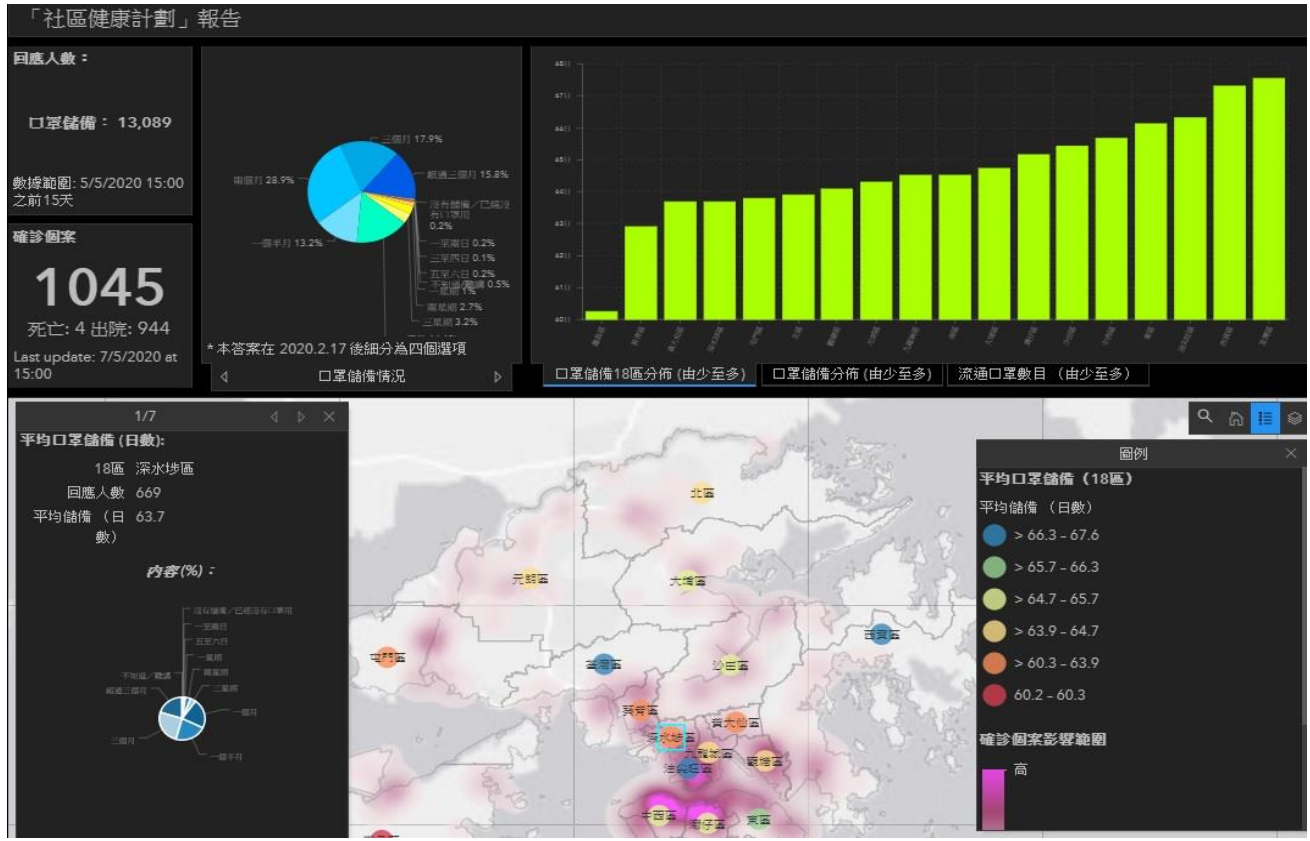
| Rank | District Council | Number of respondents | Valid samples # | Mean (mask) |
|-------------|-------------------------|------------------------------|------------------------|--------------------|
| 1 | Islands | 238 | 232 | 50.2 |
| 2 | Central and Western | 459 | 452 | 55.3 |
| 3 | Southern | 523 | 513 | 55.5 |
| 4 | Wan Chai | 303 | 295 | 57.1 |
| 5 | Sham Shui Po | 672 | 661 | 57.3 |
| 6 | Tai Po | 644 | 629 | 57.7 |
| 7 | Kwai Tsing | 762 | 749 | 59.3 |
| 8 | Eastern | 1,203 | 1,181 | 59.6 |
| 9 | Kwun Tong | 998 | 977 | 59.7 |
| 10 | Kowloon City | 726 | 709 | 59.8 |
| 11 | Yau Tsim Mong | 481 | 474 | 60.3 |
| 12 | Wong Tai Sin | 678 | 663 | 60.8 |
| 12 | Yuen Long | 942 | 925 | 60.8 |
| 14 | Sha Tin | 1,491 | 1,473 | 61.4 |
| 14 | Tuen Mun | 894 | 869 | 61.4 |
| 16 | Sai Kung | 1,073 | 1,051 | 62.1 |
| 17 | North | 433 | 427 | 62.2 |
| 18 | Tsuen Wan | 678 | 670 | 66.8 |

Excludes cases of "refuse to answer"

Part Two Online Screen Captures of CHIS

Below are some online screen captures of the CHIS map for illustration purpose:

Screen Capture 1 Mask Reserve (18 districts, using Sham Shui Po as an example; data as of May 5, 1500) #



The CHIS map is temporarily available in Chinese only, the English version is under construction.

Screen Capture 2 Mask Reserve (zoom in specific district, using Cheung Sha Wan, Sham Shui Po as an example; data as of May 5, 1500) #



The CHIS map is temporarily available in Chinese only, the English version is under construction.

Appendices

Appendix 1

Supplementary Information on CHIS Interval Values

Appendix 1: Supplementary information on CHIS interval values

Using the data as of May 5, 2020 at 1500, the Community Health Information System has generated the following interval values:

Mask reserve – by District Council:

| Interval | Color | Value |
|----------|-----------|--------------|
| First | Red | 60.2 - 60.3 |
| Second | Orange | >60.3 - 63.9 |
| Third | Yellow | >63.9 - 64.7 |
| Fourth | Green | >64.7 - 65.7 |
| Fifth | Turquoise | >65.7 - 66.3 |
| Sixth | Blue | >66.3 - 67.6 |

Mask reserve – by Constituency:

| Interval | Color | Value |
|----------|-----------|--------------|
| First | Red | 53.0 - 58.6 |
| Second | Orange | >58.6 - 62.4 |
| Third | Yellow | >62.4 - 65.3 |
| Fourth | Green | >65.3 - 68.6 |
| Fifth | Turquoise | >68.6 - 72.7 |
| Sixth | Blue | >72.7 - 78.0 |

Appendix 2

Mask Reserve by Constituency

Appendix 2: CHIS result of each constituency -

"How long can you rely on your current face mask reserve?" (Past 15 days data)

| Rank | Constituency | Sample size | Valid sample size# | Average (days)* |
|------|---------------------------------------|-------------|--------------------|-----------------|
| 1 | Central & Western - Sai Ying Pun | 31 | 31 | 53.2 |
| 2 | Eastern - Yan Lam | 39 | 38 | 53.9 |
| 3 | Kwun Tong - Lower Ngau Tau Kok Estate | 37 | 36 | 54.3 |
| 4 | Tai Po - Tai Wo | 34 | 33 | 55.1 |
| 5 | Sha Tin - Chung Tin | 30 | 30 | 55.7 |
| 5 | Yuen Long - Fairview Park | 56 | 54 | 55.7 |
| 7 | Sha Tin - Tai Shui Hang | 32 | 32 | 56.3 |
| 8 | Yuen Long - Shui Pin | 38 | 36 | 57.1 |
| 9 | Kowloon City - Prince | 37 | 36 | 57.5 |
| 10 | Wong Tai Sin - Tin Keung | 36 | 36 | 57.7 |
| 11 | Kwai Tsing - Wai Ying | 42 | 42 | 58.1 |
| 12 | Tuen Mun - Fu Tai | 31 | 31 | 58.2 |
| 13 | Wong Tai Sin - King Fu | 49 | 49 | 58.4 |
| 14 | Central & Western - Sai Wan | 31 | 31 | 58.5 |
| 14 | Sha Tin - Chung On | 36 | 36 | 58.5 |
| 16 | Eastern - Nam Fung | 52 | 52 | 58.6 |
| 17 | Yuen Long - Pat Heung South | 35 | 35 | 59.1 |
| 18 | Kwai Tsing - Tsing Yi Estate | 48 | 48 | 59.3 |
| 19 | Tuen Mun - Siu Chi | 51 | 47 | 59.6 |
| 19 | Eastern - Lok Hong | 32 | 32 | 59.6 |
| 21 | Islands - Tung Chung Central | 32 | 32 | 59.7 |
| 21 | Tai Po - Yee Fu | 33 | 33 | 59.7 |
| 23 | Kowloon City - Kadoorie | 56 | 56 | 60.0 |
| 24 | Yuen Long - Fung Cheung | 42 | 42 | 60.1 |
| 25 | Sha Tin - Tai Wai | 51 | 51 | 60.2 |
| 26 | Tai Po - Tai Po Kau | 40 | 40 | 60.3 |
| 27 | Kwun Tong - Ping Tin | 34 | 34 | 60.4 |
| 27 | Kowloon City - Ma Hang Chung | 43 | 43 | 60.4 |
| 27 | Yau Tsim Mong - Tai Kok Tsui North | 41 | 40 | 60.4 |
| 30 | Tuen Mun - Lok Tsui | 34 | 34 | 60.5 |
| 31 | Sai Kung - Hong King | 31 | 30 | 60.7 |
| 31 | Central & Western - Water Street | 38 | 38 | 60.7 |
| 33 | Tai Po - Hong Lok Yuen | 36 | 36 | 60.8 |
| 34 | Southern - Wong Chuk Hang | 34 | 34 | 61.0 |
| 34 | Sai Kung - Tak Ming | 31 | 30 | 61.0 |

| Rank | Constituency | Sample size | Valid sample size# | Average (days)* |
|------|---------------------------------|-------------|--------------------|-----------------|
| 36 | Central & Western - Belcher | 35 | 35 | 61.2 |
| 36 | Sham Shui Po - Cheung Sha Wan | 42 | 42 | 61.2 |
| 38 | Sha Tin - Kam Ying | 37 | 37 | 61.3 |
| 39 | Eastern - Provident | 42 | 42 | 61.7 |
| 39 | Kwun Tong - Hiu Lai | 48 | 48 | 61.7 |
| 41 | Sha Tin - On Tai | 39 | 39 | 61.8 |
| 41 | Tuen Mun - Tuen Mun Town Centre | 39 | 38 | 61.8 |
| 43 | Central & Western - Tung Wah | 30 | 30 | 61.9 |
| 43 | Tai Po - Shuen Wan | 49 | 47 | 61.9 |
| 43 | Sha Tin - Lee On | 32 | 32 | 61.9 |
| 46 | Tai Po - Old Market & Serenity | 51 | 51 | 62.0 |
| 46 | Kowloon City - Ho Man Tin | 66 | 64 | 62.0 |
| 48 | North - Fanling South | 54 | 54 | 62.1 |
| 49 | Wong Tai Sin - San Po Kong | 38 | 37 | 62.3 |
| 50 | Tuen Mun - San Hui | 30 | 30 | 62.4 |
| 51 | Islands - Tung Chung South | 43 | 41 | 62.5 |
| 52 | Kwun Tong - King Tin | 60 | 58 | 62.6 |
| 52 | Tsuen Wan - Allway | 33 | 33 | 62.6 |
| 52 | Southern - Chi Fu | 59 | 59 | 62.6 |
| 55 | Tai Po - San Fu | 42 | 40 | 62.7 |
| 56 | North - Yan Shing | 32 | 31 | 62.8 |
| 57 | Tuen Mun - Prime View | 57 | 57 | 63.1 |
| 57 | Eastern - Tai Koo Shing West | 52 | 52 | 63.1 |
| 59 | Southern - South Horizons West | 46 | 45 | 63.2 |
| 60 | Islands - Discovery Bay | 34 | 33 | 63.3 |
| 60 | Kwai Tsing - Greenfield | 59 | 57 | 63.3 |
| 60 | Wong Tai Sin - Chi Choi | 45 | 45 | 63.3 |
| 63 | Sha Tin - Yu Yan | 56 | 56 | 63.4 |
| 64 | Tsuen Wan - Luk Yeung | 52 | 52 | 63.5 |
| 64 | Sham Shui Po - Mei Foo Central | 44 | 44 | 63.5 |
| 66 | Sai Kung - Hang Hau East | 33 | 33 | 63.6 |
| 67 | Southern - Aberdeen | 50 | 48 | 63.7 |
| 68 | Wan Chai - Happy Valley | 40 | 39 | 63.8 |
| 68 | Tuen Mun - Fu Sun | 38 | 38 | 63.8 |
| 70 | Tuen Mun - Hanford | 47 | 47 | 64.0 |
| 71 | Sha Tin - Chun Fung | 38 | 37 | 64.1 |
| 72 | Sai Kung - Yan Ying | 51 | 51 | 64.2 |
| 73 | Southern - Ap Lei Chau North | 35 | 34 | 64.3 |
| 73 | Eastern - Tai Koo Shing East | 55 | 55 | 64.3 |
| 75 | Kwun Tong - Yuet Wah | 31 | 31 | 64.4 |

| Rank | Constituency | Sample size | Valid sample size# | Average (days)* |
|------|--------------------------------------|-------------|--------------------|-----------------|
| 75 | Wong Tai Sin - Ching Oi | 36 | 36 | 64.4 |
| 75 | Sai Kung - Fu Kwan | 40 | 40 | 64.4 |
| 75 | Sai Kung - Sai Kung Islands | 32 | 32 | 64.4 |
| 75 | Kwun Tong - Laguna City | 81 | 81 | 64.4 |
| 80 | Tsuen Wan - Tsuen Wan West | 64 | 62 | 64.5 |
| 81 | Sha Tin - Yue Shing | 58 | 58 | 64.6 |
| 81 | Wong Tai Sin - Lung Sing | 60 | 59 | 64.6 |
| 81 | Sai Kung - Fu Nam | 39 | 39 | 64.6 |
| 84 | Kwun Tong - Lam Tin | 42 | 42 | 64.8 |
| 84 | Sai Kung - Wan Hang | 42 | 42 | 64.8 |
| 84 | Wan Chai - Victoria Park | 37 | 37 | 64.8 |
| 84 | Sha Tin - Wong Uk | 55 | 55 | 64.8 |
| 88 | Eastern - Heng Fa Chuen | 76 | 76 | 64.9 |
| 89 | Sai Kung - Kwong Ming | 34 | 33 | 65.2 |
| 89 | Kwai Tsing - Wah Lai | 33 | 33 | 65.2 |
| 89 | Eastern - Fortress Hill | 49 | 49 | 65.2 |
| 89 | Tai Po - Chung Ting | 37 | 37 | 65.2 |
| 89 | Yau Tsim Mong - Mong Kok East | 34 | 34 | 65.3 |
| 94 | Kowloon City - Whampoa East | 35 | 35 | 65.3 |
| 95 | Kwun Tong - Kowloon Bay | 40 | 40 | 65.4 |
| 96 | Sai Kung - Wai King | 63 | 63 | 65.6 |
| 97 | Islands - Tung Chung North | 30 | 30 | 65.7 |
| 97 | Sha Tin - Sha Tin Town Centre | 48 | 47 | 65.7 |
| 99 | Eastern - Shau Kei Wan | 41 | 41 | 65.8 |
| 99 | Kowloon City - Hok Yuen Laguna Verde | 32 | 32 | 65.8 |
| 101 | Eastern - Kornhill Garden | 36 | 35 | 65.9 |
| 101 | Eastern - Braemar Hill | 44 | 44 | 65.9 |
| 103 | Kowloon City - Ma Tau Wai | 36 | 35 | 66.0 |
| 103 | Sai Kung - Do Shin | 35 | 35 | 66.0 |
| 105 | Yuen Long - Ping Shan South | 38 | 38 | 66.1 |
| 105 | Tsuen Wan - Discovery Park | 47 | 47 | 66.1 |
| 107 | Southern - South Horizons East | 47 | 47 | 66.2 |
| 108 | Yau Tsim Mong - Yau Ma Tei South | 32 | 31 | 66.3 |
| 109 | Tuen Mun - Siu Hei | 39 | 39 | 66.4 |
| 109 | Sai Kung - Nam On | 52 | 52 | 66.4 |
| 111 | Sha Tin - Di Yee | 41 | 41 | 66.5 |
| 111 | Kwai Tsing - Cheung On | 37 | 37 | 66.5 |
| 113 | Kowloon City - Whampoa West | 62 | 61 | 66.6 |
| 114 | Sham Shui Po - Po Lai | 31 | 31 | 66.9 |
| 114 | Sai Kung - Hang Hau West | 33 | 33 | 66.9 |

| Rank | Constituency | Sample size | Valid sample size# | Average (days)* |
|------|--|-------------|--------------------|-----------------|
| 116 | Sham Shui Po - Lai Chi Kok Central | 53 | 53 | 67.0 |
| 117 | Yuen Long - Kam Tin | 39 | 39 | 67.1 |
| 117 | Tai Po - Po Nga | 38 | 38 | 67.1 |
| 119 | Tai Po - Lam Tsuen Valley | 37 | 36 | 67.2 |
| 120 | Sha Tin - Bik Woo | 39 | 39 | 67.3 |
| 121 | Yau Tsim Mong - East Tsim Sha Tsui & King's Park | 31 | 31 | 67.5 |
| 122 | Sha Tin - City One | 72 | 72 | 67.6 |
| 123 | Eastern - Lei King Wan | 43 | 43 | 68.0 |
| 124 | Sha Tin - Hoi Nam | 39 | 39 | 68.1 |
| 124 | Tsuen Wan - Hoi Bun | 64 | 64 | 68.1 |
| 126 | Sha Tin - Wu Kai Sha | 76 | 76 | 68.4 |
| 127 | Yuen Long - Yuen Lung | 41 | 41 | 68.5 |
| 127 | Sha Tin - Kam To | 46 | 46 | 68.5 |
| 129 | Tai Po - Sai Kung North | 45 | 44 | 68.6 |
| 130 | Sai Kung - Kwan Po | 47 | 47 | 69.0 |
| 130 | Sai Kung - Wai Yan | 37 | 37 | 69.0 |
| 130 | Sham Shui Po - Mei Foo South | 53 | 53 | 69.0 |
| 133 | Eastern - Tanner | 35 | 35 | 69.3 |
| 133 | Tsuen Wan - Tsuen Wan South | 40 | 40 | 69.4 |
| 135 | Sham Shui Po - Yau Yat Tsuen | 40 | 40 | 69.5 |
| 136 | Tuen Mun - Siu Tsui | 46 | 45 | 69.6 |
| 136 | Sai Kung - Po Lam | 41 | 41 | 69.6 |
| 138 | Tai Po - Tai Po Central | 31 | 31 | 69.7 |
| 139 | Yuen Long - Kingswood North | 52 | 52 | 69.8 |
| 140 | Central & Western - University | 54 | 53 | 70.0 |
| 141 | Tsuen Wan - Tsuen Wan Rural | 65 | 65 | 70.1 |
| 142 | Sha Tin - Ma On Shan Town Centre | 66 | 66 | 70.2 |
| 143 | Yuen Long - Yuen Long Tung Tau | 35 | 34 | 70.3 |
| 143 | Kwun Tong - To Tai | 58 | 58 | 70.3 |
| 145 | Kwun Tong - Lai Ching | 55 | 55 | 70.5 |
| 146 | Tsuen Wan - Tsuen Wan Centre | 30 | 30 | 70.7 |
| 147 | Tsuen Wan - Ting Sham | 52 | 52 | 70.8 |
| 147 | Eastern - City Garden | 36 | 36 | 70.8 |
| 147 | Tuen Mun - Tsui Hing | 58 | 58 | 70.8 |
| 150 | Sham Shui Po - Mei Foo North | 51 | 51 | 71.0 |
| 150 | Sha Tin - Fo Tan | 43 | 42 | 71.0 |
| 150 | Tuen Mun - Siu Hong | 42 | 42 | 71.0 |
| 153 | Eastern - Sai Wan Ho | 46 | 45 | 71.3 |
| 153 | Yau Tsim Mong - Charming | 37 | 37 | 71.3 |

| Rank | Constituency | Sample size | Valid sample size# | Average (days)* |
|---------------------------|------------------------------------|-------------|--------------------|-----------------|
| 155 | Yau Tsim Mong - Olympic | 34 | 33 | 71.4 |
| 156 | Sai Kung - Wan Po North | 58 | 58 | 71.6 |
| 156 | Wan Chai - Causeway Bay | 30 | 30 | 71.6 |
| 158 | Tsuen Wan - Lai To | 43 | 43 | 71.8 |
| 158 | Tai Po - Fu Ming Sun | 34 | 34 | 71.8 |
| 160 | Southern - Tin Wan | 35 | 35 | 72.0 |
| 161 | Sai Kung - Wan Po South | 46 | 45 | 72.1 |
| 162 | Yuen Long - Shap Pat Heung Central | 44 | 44 | 72.4 |
| 163 | Yuen Long - Kingswood South | 47 | 47 | 72.7 |
| 164 | Eastern - Kornhill | 53 | 53 | 73.0 |
| 164 | Yau Tsim Mong - Fu Pak | 40 | 40 | 73.0 |
| 166 | Yuen Long - Shap Pat Heung West | 37 | 36 | 73.3 |
| 167 | North - Luen Wo Hui | 37 | 37 | 73.4 |
| 168 | Central & Western - Kwun Lung | 38 | 38 | 73.8 |
| 169 | Kwai Tsing - Cho Yiu | 39 | 39 | 73.9 |
| 170 | Kowloon City - Oi Chun | 31 | 31 | 74.2 |
| 170 | Sham Shui Po - Lei Cheng Uk | 31 | 31 | 74.2 |
| 172 | Wong Tai Sin - Tung Tau | 33 | 33 | 74.5 |
| 173 | Wong Tai Sin - Fung Wong | 32 | 31 | 74.7 |
| 174 | Sai Kung - Hoi Chun | 45 | 44 | 74.9 |
| 175 | Sha Tin - Chun Ma | 48 | 48 | 75.1 |
| 176 | Sha Tin - Sui Wo | 62 | 62 | 75.2 |
| 177 | Sai Kung - O Tong | 49 | 48 | 75.3 |
| 178 | Sha Tin - Yiu On | 34 | 34 | 75.8 |
| 179 | Tsuen Wan - Ma Wan | 40 | 40 | 77.4 |
| 180 | Eastern - Kam Ping | 40 | 40 | 77.5 |
| 181 | Sha Tin - Fu Lung | 34 | 34 | 77.6 |
| 182 | Eastern - Quarry Bay | 34 | 34 | 77.8 |
| 183 | Kwai Tsing - On Ho | 43 | 42 | 78.2 |
| Inadequate subsample size | Kowloon City - Kai Tak East | 4 | 4 | 33.8 |
| Inadequate subsample size | Sham Shui Po - Shek Kip Mei | 17 | 17 | 42.5 |
| Inadequate subsample size | Yuen Long - Chung Wah | 11 | 11 | 43.4 |
| Inadequate subsample size | Tuen Mun - King Hing | 14 | 14 | 44.4 |
| Inadequate subsample size | Tuen Mun - Yuet Wu | 27 | 27 | 45.3 |
| Inadequate subsample size | Sha Tin - Lower Shing Mun | 20 | 20 | 45.6 |
| Inadequate subsample size | Yuen Long - Yat Chak | 11 | 11 | 46.1 |

| Rank | Constituency | Sample size | Valid sample size# | Average (days)* |
|---------------------------|---|--------------------|---------------------------|------------------------|
| Inadequate subsample size | Kwai Tsing - Kwai Hing | 18 | 18 | 46.5 |
| Inadequate subsample size | Islands - Yat Tung Estate North | 15 | 15 | 46.5 |
| Inadequate subsample size | Yuen Long - Wang Yat | 9 | 9 | 47.3 |
| Inadequate subsample size | Sham Shui Po - Nam Cheong Central | 7 | 7 | 49.1 |
| Inadequate subsample size | Eastern - Hing Man | 14 | 14 | 49.7 |
| Inadequate subsample size | Tuen Mun - So Kwun Wat | 14 | 13 | 49.8 |
| Inadequate subsample size | Sham Shui Po - Nam Shan, Tai Hang Tung & Tai Hang Sai | 17 | 17 | 49.9 |
| Inadequate subsample size | Kwun Tong - Sau Mau Ping North | 23 | 23 | 50.0 |
| Inadequate subsample size | North - Sha Ta | 11 | 10 | 50.1 |
| Inadequate subsample size | Kwai Tsing - Shek Lei North | 10 | 10 | 50.1 |
| Inadequate subsample size | Tuen Mun - Yau Oi South | 18 | 18 | 50.1 |
| Inadequate subsample size | Sham Shui Po - Lai Chi Kok North | 24 | 24 | 50.2 |
| Inadequate subsample size | Tuen Mun - Wu King | 11 | 11 | 50.4 |
| Inadequate subsample size | Wong Tai Sin - Ching On | 13 | 13 | 50.8 |
| Inadequate subsample size | Kwun Tong - Kwun Tong On Tai | 13 | 13 | 50.8 |
| Inadequate subsample size | Kwai Tsing - Lai Wah | 29 | 29 | 50.9 |
| Inadequate subsample size | Eastern - Upper Yiu Tung | 18 | 18 | 51.6 |
| Inadequate subsample size | Sham Shui Po - So Uk | 12 | 12 | 52.4 |
| Inadequate subsample size | North - Sheung Shui Rural | 15 | 14 | 52.4 |
| Inadequate subsample size | Kwun Tong - On Tat | 6 | 6 | 52.5 |
| Inadequate subsample size | Sham Shui Po - Lai Chi Kok South | 26 | 26 | 52.5 |
| Inadequate subsample size | Eastern - Yue Wan | 19 | 19 | 52.6 |
| Inadequate subsample size | Wong Tai Sin - Choi Hung | 12 | 12 | 52.9 |
| Inadequate subsample size | Yuen Long - Shap Pat Heung East | 12 | 12 | 53.0 |
| Inadequate subsample size | Yau Tsim Mong - Mong Kok West | 16 | 16 | 53.3 |
| Inadequate | Yuen Long - Tsz Yau | 16 | 16 | 53.3 |

| Rank | Constituency | Sample size | Valid sample size# | Average (days)* |
|---------------------------|---------------------------------|--------------------|---------------------------|------------------------|
| subsample size | | | | |
| Inadequate subsample size | Kwai Tsing - Cheung Hang | 17 | 17 | 53.4 |
| Inadequate subsample size | Kwai Tsing - Upper Tai Wo Hau | 16 | 16 | 53.4 |
| Inadequate subsample size | Yuen Long - Ha Tsuen | 19 | 19 | 53.5 |
| Inadequate subsample size | Wong Tai Sin - Lok Fu | 29 | 29 | 53.9 |
| Inadequate subsample size | Wong Tai Sin - Tung Mei | 19 | 17 | 54.0 |
| Inadequate subsample size | Wan Chai - Hennessy | 9 | 9 | 54.1 |
| Inadequate subsample size | North - Shing Fuk | 24 | 24 | 54.2 |
| Inadequate subsample size | Tuen Mun - Po Tin | 7 | 7 | 54.3 |
| Inadequate subsample size | Sha Tin - Kwong Hong | 17 | 17 | 54.3 |
| Inadequate subsample size | Wan Chai - Southorn | 20 | 20 | 54.4 |
| Inadequate subsample size | Kwai Tsing - Ching Fat | 23 | 23 | 54.7 |
| Inadequate subsample size | Sham Shui Po - Fu Cheong | 18 | 17 | 54.9 |
| Inadequate subsample size | Islands - Lantau | 19 | 19 | 55.1 |
| Inadequate subsample size | Kowloon City - To Kwa Wan North | 11 | 11 | 55.1 |
| Inadequate subsample size | Kwai Tsing - Cheung Hong | 24 | 24 | 55.3 |
| Inadequate subsample size | Sha Tin - Heng On | 25 | 25 | 55.7 |
| Inadequate subsample size | Sha Tin - Lek Yuen | 14 | 14 | 55.9 |
| Inadequate subsample size | Wan Chai - Stubbs Road | 16 | 16 | 56.0 |
| Inadequate subsample size | Wong Tai Sin - Tsz Wan West | 14 | 14 | 56.1 |
| Inadequate subsample size | Sham Shui Po - Lai Kok | 12 | 12 | 56.3 |
| Inadequate subsample size | Kwun Tong - Ting On | 13 | 13 | 56.4 |
| Inadequate subsample size | North - Choi Yuen | 21 | 21 | 56.4 |
| Inadequate subsample size | Kwun Tong - Pak Nga | 28 | 28 | 56.5 |
| Inadequate subsample size | Kwun Tong - Yau Chui | 23 | 23 | 56.7 |
| Inadequate subsample size | Kwun Tong - Choi Tak | 11 | 9 | 56.7 |

| Rank | Constituency | Sample size | Valid sample size# | Average (days)* |
|---------------------------|--------------------------------------|--------------------|---------------------------|------------------------|
| Inadequate subsample size | Central & Western - Shek Tong Tsui | 28 | 27 | 56.8 |
| Inadequate subsample size | North - Shek Wu Hui | 26 | 26 | 56.9 |
| Inadequate subsample size | Sham Shui Po - Nam Cheong South | 26 | 26 | 57.0 |
| Inadequate subsample size | Yau Tsim Mong - Jordan West | 18 | 18 | 57.2 |
| Inadequate subsample size | Yuen Long - San Tin | 11 | 11 | 57.2 |
| Inadequate subsample size | Tsuen Wan - Tak Wah | 22 | 22 | 57.2 |
| Inadequate subsample size | Islands - Lamma & Po Toi | 15 | 15 | 57.3 |
| Inadequate subsample size | Kwun Tong - Sau Mau Ping South | 13 | 12 | 57.4 |
| Inadequate subsample size | Yuen Long - Ping Shan North | 16 | 16 | 57.5 |
| Inadequate subsample size | Wong Tai Sin - Lung Sheung | 26 | 26 | 57.5 |
| Inadequate subsample size | Southern - Shek Yue | 19 | 19 | 57.6 |
| Inadequate subsample size | Wan Chai - Oi Kwan | 23 | 23 | 57.7 |
| Inadequate subsample size | Kowloon City - Ma Tau Kok | 15 | 15 | 57.8 |
| Inadequate subsample size | Wan Chai - Tai Fat Hau | 19 | 19 | 57.9 |
| Inadequate subsample size | North - Fung Tsui | 16 | 16 | 58.1 |
| Inadequate subsample size | Tsuen Wan - Lei Muk Shue East | 16 | 16 | 58.3 |
| Inadequate subsample size | Yuen Long - Tin Yiu | 19 | 19 | 58.4 |
| Inadequate subsample size | Yuen Long - Yuen Long Centre | 15 | 15 | 58.5 |
| Inadequate subsample size | Kwai Tsing - Shing Hong | 23 | 23 | 58.5 |
| Inadequate subsample size | Tuen Mun - Tuen Mun Rural | 25 | 25 | 58.6 |
| Inadequate subsample size | North - Queen's Hill | 24 | 24 | 58.7 |
| Inadequate subsample size | Sai Kung - Po Yee | 26 | 25 | 58.7 |
| Inadequate subsample size | Eastern - Wan Tsui | 19 | 19 | 58.7 |
| Inadequate subsample size | Islands - Cheung Chau | 21 | 21 | 58.8 |
| Inadequate subsample size | Kwai Tsing - Kwai Chung Estate North | 16 | 16 | 58.9 |
| Inadequate | Eastern - Fullview | 27 | 27 | 59.0 |

| Rank | Constituency | Sample size | Valid sample size# | Average (days)* |
|---------------------------|-------------------------------------|--------------------|---------------------------|------------------------|
| subsample size | | | | |
| Inadequate subsample size | Sha Tin - Sha Kok | 15 | 15 | 59.3 |
| Inadequate subsample size | Kwai Tsing - On Yam | 14 | 14 | 59.4 |
| Inadequate subsample size | Kwun Tong - Lok Wah South | 10 | 10 | 59.9 |
| Inadequate subsample size | Wong Tai Sin - Choi Wan South | 14 | 14 | 60.0 |
| Inadequate subsample size | Kwun Tong - Yau Tong East | 11 | 11 | 60.0 |
| Inadequate subsample size | North - Cheung Wah | 26 | 26 | 60.2 |
| Inadequate subsample size | Tuen Mun - Hing Tsak | 18 | 18 | 60.3 |
| Inadequate subsample size | Kowloon City - Sheung Lok | 21 | 21 | 60.4 |
| Inadequate subsample size | Kwun Tong - Po Tat | 12 | 12 | 60.5 |
| Inadequate subsample size | Kwai Tsing - Kwai Shing East Estate | 18 | 18 | 60.6 |
| Inadequate subsample size | Tsuen Wan - Lei Muk Shue West | 12 | 11 | 60.6 |
| Inadequate subsample size | Kwun Tong - Ping Shek | 19 | 18 | 60.7 |
| Inadequate subsample size | Sai Kung - Sai Kung Central | 26 | 26 | 60.8 |
| Inadequate subsample size | Yau Tsim Mong - Tai Kok Tsui South | 16 | 16 | 60.8 |
| Inadequate subsample size | Sha Tin - Kwong Yuen | 15 | 15 | 60.8 |
| Inadequate subsample size | Kwai Tsing - Cheung Ching | 25 | 25 | 60.8 |
| Inadequate subsample size | Yuen Long - Pat Heung North | 23 | 23 | 60.8 |
| Inadequate subsample size | Yuen Long - Ching King | 22 | 22 | 61.0 |
| Inadequate subsample size | Kwun Tong - Lok Wah North | 13 | 13 | 61.1 |
| Inadequate subsample size | Sha Tin - Sun Tin Wai | 19 | 19 | 61.1 |
| Inadequate subsample size | Yau Tsim Mong - Yau Ma Tei North | 25 | 25 | 61.1 |
| Inadequate subsample size | Tai Po - Tai Yuen | 26 | 25 | 61.2 |
| Inadequate subsample size | Eastern - Fort Street | 27 | 27 | 61.3 |
| Inadequate subsample size | Southern - Ap Lei Chau Estate | 11 | 11 | 61.4 |

| Rank | Constituency | Sample size | Valid sample size# | Average (days)* |
|---------------------------|---------------------------------------|--------------------|---------------------------|------------------------|
| Inadequate subsample size | Wong Tai Sin - Fung Tak | 29 | 29 | 61.5 |
| Inadequate subsample size | Kowloon City - To Kwa Wan South | 20 | 19 | 61.6 |
| Inadequate subsample size | Sha Tin - Pok Hong | 28 | 28 | 61.6 |
| Inadequate subsample size | Southern - Wah Kwai | 28 | 27 | 61.6 |
| Inadequate subsample size | Islands - Peng Chau & Hei Ling Chau | 9 | 9 | 61.7 |
| Inadequate subsample size | Sai Kung - Sheung Tak | 24 | 23 | 61.7 |
| Inadequate subsample size | Wong Tai Sin - Tsui Chuk & Pang Ching | 28 | 28 | 61.8 |
| Inadequate subsample size | Tsuen Wan - Shek Wai Kok | 8 | 8 | 61.9 |
| Inadequate subsample size | Sai Kung - King Lam | 19 | 19 | 61.9 |
| Inadequate subsample size | Tsuen Wan - Fuk Loi | 10 | 10 | 62.0 |
| Inadequate subsample size | Sham Shui Po - Pik Wui | 23 | 23 | 62.0 |
| Inadequate subsample size | Sha Tin - Tin Sum | 22 | 22 | 62.0 |
| Inadequate subsample size | Kwun Tong - Po Lok | 14 | 14 | 62.1 |
| Inadequate subsample size | Yuen Long - Shui Wah | 14 | 14 | 62.1 |
| Inadequate subsample size | Southern - Wah Fu North | 19 | 19 | 62.2 |
| Inadequate subsample size | Sham Shui Po - Nam Cheong North | 13 | 13 | 62.2 |
| Inadequate subsample size | Kwai Tsing - Kwai Chung Estate South | 13 | 13 | 62.2 |
| Inadequate subsample size | Yuen Long - Tin Heng | 16 | 16 | 62.3 |
| Inadequate subsample size | Southern - Stanley & Shek O | 26 | 25 | 62.4 |
| Inadequate subsample size | Kwai Tsing - Kwai Luen | 17 | 17 | 62.5 |
| Inadequate subsample size | Kwun Tong - Shun Tin | 14 | 14 | 62.5 |
| Inadequate subsample size | Kowloon City - Sung Wong Toi | 26 | 25 | 62.5 |

| Rank | Constituency | Sample size | Valid sample size# | Average (days)* |
|---------------------------|---------------------------------------|--------------------|---------------------------|------------------------|
| Inadequate subsample size | Sha Tin - Wo Che Estate | 26 | 26 | 62.5 |
| Inadequate subsample size | Eastern - Tsui Wan | 20 | 20 | 62.6 |
| Inadequate subsample size | Kwai Tsing - Tsing Yi South | 22 | 22 | 62.6 |
| Inadequate subsample size | Sham Shui Po - Un Chau | 23 | 23 | 62.6 |
| Inadequate subsample size | Sha Tin - Chui Tin | 29 | 29 | 62.7 |
| Inadequate subsample size | Kwai Tsing - Tai Pak Tin East | 13 | 13 | 62.7 |
| Inadequate subsample size | Yau Tsim Mong - Tsim Sha Tsui Central | 21 | 21 | 62.8 |
| Inadequate subsample size | Tuen Mun - Leung King | 16 | 16 | 62.8 |
| Inadequate subsample size | Yuen Long - Pek Long | 16 | 16 | 62.8 |
| Inadequate subsample size | Wong Tai Sin - Chuk Yuen South | 10 | 10 | 63.0 |
| Inadequate subsample size | Sha Tin - Chui Ka | 24 | 24 | 63.1 |
| Inadequate subsample size | Yau Tsim Mong - Mong Kok North | 18 | 18 | 63.3 |
| Inadequate subsample size | North - Wah Ming | 15 | 15 | 63.4 |
| Inadequate subsample size | Kwun Tong - Hong Lok | 27 | 26 | 63.5 |
| Inadequate subsample size | Tai Po - Wan Tau Tong | 21 | 21 | 63.5 |
| Inadequate subsample size | Yuen Long - Yuet Yan | 12 | 12 | 63.6 |
| Inadequate subsample size | Sai Kung - Kin Ming | 9 | 8 | 63.6 |
| Inadequate subsample size | Yau Tsim Mong - Tai Nan | 24 | 24 | 63.7 |
| Inadequate subsample size | Tai Po - Tai Po Hui | 13 | 13 | 63.8 |
| Inadequate subsample size | Tuen Mun - Yau Oi North | 21 | 20 | 64.0 |
| Inadequate subsample size | Kowloon City - Hoi Sham | 22 | 22 | 64.0 |
| Inadequate subsample size | Kwun Tong - Yau Lai | 15 | 15 | 64.0 |

| Rank | Constituency | Sample size | Valid sample size# | Average (days)* |
|---------------------------|---------------------------------|--------------------|---------------------------|------------------------|
| Inadequate subsample size | Tuen Mun - Shan King | 29 | 29 | 64.1 |
| Inadequate subsample size | Southern - Lei Tung I | 22 | 22 | 64.1 |
| Inadequate subsample size | Kwun Tong - Hip Hong | 11 | 11 | 64.1 |
| Inadequate subsample size | Kwun Tong - Kwong Tak | 21 | 21 | 64.3 |
| Inadequate subsample size | Eastern - A Kung Ngam | 22 | 22 | 64.4 |
| Inadequate subsample size | Wan Chai - Canal Road | 13 | 13 | 64.5 |
| Inadequate subsample size | Wong Tai Sin - Chuk Yuen North | 26 | 26 | 64.5 |
| Inadequate subsample size | Kowloon City - Lung Shing | 19 | 19 | 64.6 |
| Inadequate subsample size | Sha Tin - Hin Ka | 29 | 29 | 64.7 |
| Inadequate subsample size | Eastern - Siu Sai Wan | 19 | 19 | 64.7 |
| Inadequate subsample size | Tai Po - Wang Fuk | 28 | 28 | 64.8 |
| Inadequate subsample size | Kwai Tsing - Shek Yam | 18 | 18 | 64.8 |
| Inadequate subsample size | Kwai Tsing - Lower Tai Wo Hau | 15 | 15 | 64.9 |
| Inadequate subsample size | Sha Tin - Jat Chuen | 18 | 18 | 64.9 |
| Inadequate subsample size | Wong Tai Sin - Tsz Wan East | 23 | 21 | 65.0 |
| Inadequate subsample size | Kwai Tsing - Kwai Fong | 21 | 21 | 65.3 |
| Inadequate subsample size | Tsuen Wan - Cheung Shek | 12 | 12 | 65.5 |
| Inadequate subsample size | Yuen Long - Shing Yan | 18 | 17 | 65.6 |
| Inadequate subsample size | Sha Tin - Wan Shing | 27 | 26 | 65.7 |
| Inadequate subsample size | Yuen Long - Fu Yan | 21 | 21 | 65.7 |
| Inadequate subsample size | Kwai Tsing - Tai Pak Tin West | 14 | 13 | 65.8 |
| Inadequate subsample size | Yau Tsim Mong - Kowloon Station | 18 | 18 | 65.8 |

| Rank | Constituency | Sample size | Valid sample size# | Average (days)* |
|---------------------------|---|--------------------|---------------------------|------------------------|
| Inadequate subsample size | Tuen Mun - San King | 25 | 24 | 65.8 |
| Inadequate subsample size | Eastern - Tsui Tak | 29 | 29 | 65.9 |
| Inadequate subsample size | Kowloon City - Ka Wai | 25 | 25 | 65.9 |
| Inadequate subsample size | Central & Western - Sheung Wan | 25 | 25 | 66.0 |
| Inadequate subsample size | Tuen Mun - Butterfly | 18 | 18 | 66.0 |
| Inadequate subsample size | North - Ching Ho | 10 | 10 | 66.0 |
| Inadequate subsample size | Kwun Tong - Jordan Valley | 23 | 23 | 66.2 |
| Inadequate subsample size | Sham Shui Po - Lung Ping & Sheung Pak Tin | 21 | 21 | 66.4 |
| Inadequate subsample size | Wong Tai Sin - Choi Wan West | 16 | 16 | 66.6 |
| Inadequate subsample size | Kowloon City - Hung Hom | 14 | 14 | 66.6 |
| Inadequate subsample size | Southern - Wah Fu South | 22 | 22 | 66.7 |
| Inadequate subsample size | Tsuen Wan - Clague Garden | 26 | 26 | 66.8 |
| Inadequate subsample size | Kwun Tong - Tsui Ping | 18 | 17 | 66.9 |
| Inadequate subsample size | Yuen Long - Shap Pat Heung North | 13 | 13 | 66.9 |
| Inadequate subsample size | Kwai Tsing - Shek Lei South | 18 | 18 | 67.4 |
| Inadequate subsample size | North - Wah Do | 22 | 21 | 67.6 |
| Inadequate subsample size | Kowloon City - Kowloon Tong | 29 | 29 | 67.7 |
| Inadequate subsample size | Sham Shui Po - Nam Cheong West | 20 | 20 | 67.8 |
| Inadequate subsample size | Kowloon City - Lok Man | 28 | 28 | 67.8 |
| Inadequate subsample size | Central & Western - Centre Street | 18 | 18 | 67.9 |
| Inadequate subsample size | North - Yu Tai | 22 | 22 | 68.2 |
| Inadequate subsample size | Yuen Long - Nam Ping | 10 | 10 | 68.2 |

| Rank | Constituency | Sample size | Valid sample size# | Average (days)* |
|---------------------------|-------------------------------------|--------------------|---------------------------|------------------------|
| Inadequate subsample size | Yuen Long - Hung Fuk | 9 | 9 | 68.3 |
| Inadequate subsample size | Kwun Tong - Hing Tin | 24 | 24 | 68.6 |
| Inadequate subsample size | Kwun Tong - Yau Tong West | 18 | 18 | 68.7 |
| Inadequate subsample size | Yuen Long - Chung Pak | 12 | 12 | 68.7 |
| Inadequate subsample size | Kowloon City - Kai Tak North | 10 | 10 | 68.7 |
| Inadequate subsample size | Eastern - Fei Tsui | 12 | 12 | 68.8 |
| Inadequate subsample size | Eastern - Lower Yiu Tung | 17 | 17 | 68.8 |
| Inadequate subsample size | Wan Chai - Tin Hau | 22 | 22 | 69.1 |
| Inadequate subsample size | Tuen Mun - Tin King | 22 | 22 | 69.1 |
| Inadequate subsample size | Sai Kung - Hau Tak | 26 | 26 | 69.2 |
| Inadequate subsample size | Kwun Tong - Chun Cheung | 16 | 16 | 69.4 |
| Inadequate subsample size | Sham Shui Po - Nam Cheong East | 23 | 21 | 69.6 |
| Inadequate subsample size | Southern - Lei Tung II | 19 | 19 | 69.8 |
| Inadequate subsample size | Wong Tai Sin - Lung Ha | 28 | 28 | 69.9 |
| Inadequate subsample size | Kwai Tsing - Lai King | 24 | 24 | 70.0 |
| Inadequate subsample size | Southern - Bays Area | 6 | 6 | 70.0 |
| Inadequate subsample size | North - Fanling Town | 28 | 28 | 70.1 |
| Inadequate subsample size | Yau Tsim Mong - Mong Kok South | 15 | 15 | 70.3 |
| Inadequate subsample size | Yuen Long - Tin Shing | 21 | 21 | 70.3 |
| Inadequate subsample size | Tuen Mun - Lung Mun | 22 | 22 | 70.5 |
| Inadequate subsample size | Central & Western - Peak | 14 | 14 | 70.6 |
| Inadequate subsample size | Central & Western - Mid Levels East | 28 | 28 | 70.7 |

| Rank | Constituency | Sample size | Valid sample size# | Average (days)* |
|---------------------------|--|--------------------|---------------------------|------------------------|
| Inadequate subsample size | Kwun Tong - Sau Mau Ping Central | 15 | 14 | 70.7 |
| Inadequate subsample size | Sha Tin - Keng Hau | 28 | 28 | 70.7 |
| Inadequate subsample size | Central & Western - Kennedy Town & Mount Davis | 25 | 25 | 70.8 |
| Inadequate subsample size | North - Tin Ping East | 24 | 24 | 70.9 |
| Inadequate subsample size | Kwun Tong - Upper Ngau Tau Kok Estate | 14 | 14 | 71.1 |
| Inadequate subsample size | Southern - Pokfulam | 24 | 24 | 71.2 |
| Inadequate subsample size | Yuen Long - Ping Shan Central | 19 | 18 | 71.2 |
| Inadequate subsample size | Tuen Mun - Yan Tin | 9 | 9 | 71.3 |
| Inadequate subsample size | Eastern - Hing Tung | 28 | 27 | 71.9 |
| Inadequate subsample size | Sai Kung - Choi Kin | 29 | 29 | 71.9 |
| Inadequate subsample size | Islands - Mun Yat | 13 | 13 | 72.0 |
| Inadequate subsample size | Eastern - Healthy Village | 23 | 22 | 72.2 |
| Inadequate subsample size | Kowloon City - Hung Hom Bay | 28 | 28 | 72.3 |
| Inadequate subsample size | Kwun Tong - Kwun Tong Central | 24 | 24 | 72.5 |
| Inadequate subsample size | Sham Shui Po - Ha Pak Tin | 19 | 19 | 72.6 |
| Inadequate subsample size | Sai Kung - Tsui Lam | 27 | 27 | 72.7 |
| Inadequate subsample size | Wan Chai - Broadwood | 19 | 18 | 72.8 |
| Inadequate subsample size | Kowloon City - Kai Tak Central & South | 14 | 14 | 72.8 |
| Inadequate subsample size | Tuen Mun - On Ting | 21 | 21 | 72.9 |
| Inadequate subsample size | Eastern - Aldrich Bay | 27 | 26 | 72.9 |
| Inadequate subsample size | Central & Western - Chung Wan | 27 | 26 | 73.2 |
| Inadequate subsample size | Eastern - Kai Hiu | 14 | 14 | 73.3 |

| Rank | Constituency | Sample size | Valid sample size# | Average (days)* |
|---------------------------|------------------------------------|--------------------|---------------------------|------------------------|
| Inadequate subsample size | Yuen Long - Shui Oi | 14 | 14 | 73.3 |
| Inadequate subsample size | Tuen Mun - Kin Sang | 28 | 27 | 73.3 |
| Inadequate subsample size | Kwai Tsing - Hing Fong | 24 | 24 | 73.8 |
| Inadequate subsample size | Yau Tsim Mong - Cherry | 18 | 18 | 74.2 |
| Inadequate subsample size | Central & Western - Castle Road | 24 | 24 | 74.4 |
| Inadequate subsample size | Kowloon City - Oi Man | 28 | 27 | 74.7 |
| Inadequate subsample size | Wong Tai Sin - Choi Wan East | 19 | 19 | 75.0 |
| Inadequate subsample size | Kwun Tong - On Lee | 11 | 11 | 75.0 |
| Inadequate subsample size | Kwun Tong - Sheung Shun | 19 | 19 | 75.3 |
| Inadequate subsample size | Yuen Long - Yiu Yau | 17 | 17 | 75.4 |
| Inadequate subsample size | Yuen Long - Fung Nin | 24 | 24 | 75.6 |
| Inadequate subsample size | Kwun Tong - Kai Yip | 20 | 20 | 76.1 |
| Inadequate subsample size | Wan Chai - Tai Hang | 26 | 25 | 76.2 |
| Inadequate subsample size | Sham Shui Po - Fortune | 15 | 15 | 76.4 |
| Inadequate subsample size | Eastern - Mount Parker | 21 | 20 | 76.5 |
| Inadequate subsample size | Wong Tai Sin - Wang Tau Hom | 21 | 21 | 76.6 |
| Inadequate subsample size | Tai Po - Kwong Fuk & Plover Cove | 16 | 16 | 76.9 |
| Inadequate subsample size | Wong Tai Sin - Lung Tsui | 15 | 15 | 77.0 |
| Inadequate subsample size | Sai Kung - Pak Sha Wan | 29 | 29 | 77.1 |
| Inadequate subsample size | Yau Tsim Mong - Tsim Sha Tsui West | 9 | 9 | 77.3 |
| Inadequate subsample size | Tsuen Wan - Yeung Uk Road | 26 | 26 | 78.1 |
| Inadequate subsample size | Tuen Mun - Sam Shing | 23 | 23 | 78.5 |

| Rank | Constituency | Sample size | Valid sample size# | Average (days)* |
|---------------------------|-------------------------------------|--------------------|---------------------------|------------------------|
| Inadequate subsample size | Wan Chai - Jardine's Lookout | 18 | 17 | 79.4 |
| Inadequate subsample size | Kwai Tsing - Kwai Shing West Estate | 15 | 15 | 81.0 |
| Inadequate subsample size | Tai Po - Fu Heng | 24 | 24 | 81.9 |
| Inadequate subsample size | Yau Tsim Mong - Jordan South | 14 | 14 | 82.5 |
| Inadequate subsample size | Sha Tin - Shui Chuen O | 10 | 9 | 85.7 |
| Inadequate subsample size | Yau Tsim Mong - Jordan North | 6 | 6 | 88.5 |
| Inadequate subsample size | North - Tin Ping West | 15 | 15 | 101.0 |

Excludes cases of "don't know / hard to say" and "refuse to answer"

* Numeric conversion as follows: " No reserve at all / already none=0.0 days; 1-2 days=1.5 days; 3-4 days=3.5 days; 5-6 days=5.5 days; 1 week=7.0 days; 2 weeks=14.0 days; 3 weeks=21.0 days; 1 month=30.0 days; 1.5 months=45 days; 2 months=60 days; 3 months=90 days, over 3 months=120 days; don't know/hard to say are excluded."

Appendix 3

Mask Usage by Constituency

Appendix 3: CHIS result of each constituency -

"How would you describe your usage of face mask? Please try to use past 7 days as your reference."
(Past 15 days data)

| Rank | Constituency | Number of respondents | Valid samples # | Mean (mask/day) * |
|------|----------------------------------|-----------------------|-----------------|-------------------|
| 1 | Central & Western - Water Street | 38 | 38 | 0.66 |
| 2 | Wan Chai - Happy Valley | 40 | 37 | 0.67 |
| 3 | Tai Po - Lam Tsuen Valley | 37 | 36 | 0.69 |
| 3 | Yuen Long - Kam Tin | 39 | 39 | 0.69 |
| 3 | Sha Tin - Lee On | 32 | 32 | 0.69 |
| 6 | Tai Po - Sai Kung North | 45 | 43 | 0.71 |
| 7 | Central & Western - Belcher | 35 | 35 | 0.72 |
| 7 | Southern - Chi Fu | 59 | 59 | 0.72 |
| 9 | Eastern - Lei King Wan | 43 | 43 | 0.73 |
| 9 | Kowloon City - Kadoorie | 56 | 54 | 0.73 |
| 9 | Sha Tin - Ma On Shan Town Centre | 66 | 66 | 0.73 |
| 9 | Eastern - Tai Koo Shing East | 55 | 54 | 0.73 |
| 13 | Central & Western - University | 54 | 54 | 0.74 |
| 14 | Sha Tin - Fu Lung | 34 | 34 | 0.75 |
| 15 | Tai Po - Tai Po Kau | 40 | 40 | 0.76 |
| 15 | Tuen Mun - Lok Tsui | 34 | 33 | 0.76 |
| 15 | Kwun Tong - King Tin | 60 | 56 | 0.76 |
| 18 | Sham Shui Po - Mei Foo North | 51 | 50 | 0.77 |
| 18 | Eastern - Lok Hong | 32 | 32 | 0.77 |
| 18 | Islands - Tung Chung Central | 32 | 32 | 0.77 |
| 18 | Tai Po - Chung Ting | 37 | 37 | 0.77 |
| 18 | Yuen Long - Kingswood South | 47 | 47 | 0.77 |
| 18 | Kwun Tong - To Tai | 58 | 57 | 0.77 |
| 24 | Kowloon City - Prince | 37 | 35 | 0.78 |
| 24 | Sha Tin - Chung Tin | 30 | 30 | 0.78 |
| 26 | Eastern - Kam Ping | 40 | 40 | 0.79 |
| 26 | Southern - Tin Wan | 35 | 35 | 0.79 |
| 26 | Sai Kung - Nam On | 52 | 52 | 0.79 |
| 26 | Kwai Tsing - On Ho | 43 | 42 | 0.79 |
| 26 | Kwun Tong - Kowloon Bay | 40 | 39 | 0.79 |
| 31 | Sha Tin - Fo Tan | 43 | 42 | 0.80 |
| 31 | Eastern - Nam Fung | 52 | 51 | 0.80 |
| 33 | Eastern - Yan Lam | 39 | 36 | 0.81 |
| 33 | Tuen Mun - Fu Tai | 31 | 30 | 0.81 |
| 33 | Tuen Mun - Siu Hong | 42 | 42 | 0.81 |

| Rank | Constituency | Number of respondents | Valid samples # | Mean (mask/day) * |
|------|--------------------------------------|-----------------------|-----------------|-------------------|
| 33 | Tuen Mun - Hanford | 47 | 46 | 0.81 |
| 33 | Eastern - Fortress Hill | 49 | 49 | 0.81 |
| 38 | Kowloon City - Hok Yuen Laguna Verde | 32 | 32 | 0.82 |
| 38 | Southern - South Horizons East | 47 | 46 | 0.82 |
| 38 | Tai Po - Po Nga | 38 | 38 | 0.82 |
| 38 | Eastern - Quarry Bay | 34 | 34 | 0.82 |
| 38 | Eastern - Heng Fa Chuen | 76 | 76 | 0.82 |
| 38 | Kwai Tsing - Cho Yiu | 39 | 38 | 0.82 |
| 38 | Sham Shui Po - Yau Yat Tsuen | 40 | 39 | 0.82 |
| 38 | Sai Kung - Hong King | 31 | 30 | 0.82 |
| 38 | Sham Shui Po - Mei Foo Central | 44 | 42 | 0.82 |
| 38 | Southern - South Horizons West | 46 | 46 | 0.82 |
| 38 | Sai Kung - Wan Hang | 42 | 42 | 0.82 |
| 38 | Islands - Discovery Bay | 34 | 34 | 0.82 |
| 38 | Eastern - City Garden | 36 | 36 | 0.82 |
| 38 | Wong Tai Sin - Lung Sing | 60 | 59 | 0.82 |
| 38 | Yau Tsim Mong - Yau Ma Tei South | 32 | 30 | 0.83 |
| 53 | Sham Shui Po - Cheung Sha Wan | 42 | 42 | 0.83 |
| 53 | Eastern - Kornhill Garden | 36 | 35 | 0.83 |
| 53 | Sha Tin - Sui Wo | 62 | 60 | 0.83 |
| 53 | Islands - Tung Chung South | 43 | 41 | 0.83 |
| 53 | Sai Kung - Hang Hau East | 33 | 33 | 0.83 |
| 53 | Wan Chai - Victoria Park | 37 | 36 | 0.83 |
| 53 | Kowloon City - Whampoa East | 35 | 35 | 0.83 |
| 60 | Kwun Tong - Laguna City | 81 | 79 | 0.84 |
| 60 | Sai Kung - Hang Hau West | 33 | 33 | 0.84 |
| 60 | Kwun Tong - Lai Ching | 55 | 54 | 0.84 |
| 60 | Sha Tin - Chun Ma | 48 | 48 | 0.84 |
| 60 | Sai Kung - Kwan Po | 47 | 47 | 0.84 |
| 60 | Sai Kung - Do Shin | 35 | 35 | 0.84 |
| 60 | Yau Tsim Mong - Olympic | 34 | 33 | 0.84 |
| 60 | Southern - Aberdeen | 50 | 49 | 0.84 |
| 68 | Tai Po - Old Market & Serenity | 51 | 51 | 0.85 |
| 68 | Sha Tin - Di Yee | 41 | 40 | 0.85 |
| 68 | Yuen Long - Fairview Park | 56 | 55 | 0.85 |
| 68 | Wong Tai Sin - San Po Kong | 38 | 36 | 0.85 |
| 68 | Yau Tsim Mong - Tai Kok Tsui North | 41 | 39 | 0.85 |
| 73 | Sha Tin - Kam To | 46 | 46 | 0.86 |
| 73 | Kwun Tong - Yuet Wah | 31 | 31 | 0.86 |
| 73 | North - Fanling South | 54 | 54 | 0.86 |

| Rank | Constituency | Number of respondents | Valid samples # | Mean (mask/day) * |
|------|---------------------------------------|-----------------------|-----------------|-------------------|
| 73 | Eastern - Kornhill | 53 | 52 | 0.86 |
| 73 | Yuen Long - Yuen Lung | 41 | 41 | 0.86 |
| 73 | Wong Tai Sin - Tin Keung | 36 | 35 | 0.86 |
| 79 | Tai Po - San Fu | 42 | 41 | 0.87 |
| 79 | Tsuen Wan - Allway | 33 | 33 | 0.87 |
| 79 | North - Yan Shing | 32 | 31 | 0.87 |
| 79 | Central & Western - Sai Ying Pun | 31 | 30 | 0.87 |
| 83 | Tuen Mun - Fu Sun | 38 | 38 | 0.88 |
| 83 | Eastern - Braemar Hill | 44 | 43 | 0.88 |
| 83 | Central & Western - Kwun Lung | 38 | 38 | 0.88 |
| 83 | Sha Tin - Yu Yan | 56 | 55 | 0.88 |
| 87 | Yuen Long - Shui Pin | 38 | 37 | 0.89 |
| 87 | Sha Tin - On Tai | 39 | 38 | 0.89 |
| 87 | Tai Po - Shuen Wan | 49 | 47 | 0.89 |
| 87 | Sai Kung - Wan Po North | 58 | 57 | 0.89 |
| 87 | Yau Tsim Mong - Fu Pak | 40 | 40 | 0.89 |
| 87 | Tai Po - Fu Ming Sun | 34 | 34 | 0.89 |
| 87 | Eastern - Tai Koo Shing West | 52 | 50 | 0.89 |
| 87 | Kwun Tong - Lower Ngau Tau Kok Estate | 37 | 36 | 0.89 |
| 87 | Tsuen Wan - Tsuen Wan West | 64 | 62 | 0.89 |
| 87 | Sai Kung - Kwong Ming | 34 | 33 | 0.89 |
| 87 | Kwai Tsing - Cheung On | 37 | 37 | 0.89 |
| 98 | Tsuen Wan - Discovery Park | 47 | 47 | 0.90 |
| 98 | Sha Tin - Wu Kai Sha | 76 | 76 | 0.90 |
| 98 | Eastern - Provident | 42 | 42 | 0.90 |
| 98 | Sai Kung - Sai Kung Islands | 32 | 31 | 0.90 |
| 102 | Tai Po - Hong Lok Yuen | 36 | 35 | 0.91 |
| 102 | Eastern - Sai Wan Ho | 46 | 45 | 0.91 |
| 102 | Sha Tin - Kam Ying | 37 | 37 | 0.91 |
| 102 | Kowloon City - Whampoa West | 62 | 62 | 0.91 |
| 102 | Sha Tin - Yue Shing | 58 | 57 | 0.91 |
| 102 | Yau Tsim Mong - Mong Kok East | 34 | 34 | 0.91 |
| 102 | Kwai Tsing - Wai Ying | 42 | 41 | 0.91 |
| 102 | Tuen Mun - Siu Tsui | 46 | 45 | 0.91 |
| 110 | Central & Western - Tung Wah | 30 | 30 | 0.92 |
| 110 | Wong Tai Sin - King Fu | 49 | 49 | 0.92 |
| 110 | Tsuen Wan - Ting Sham | 52 | 52 | 0.92 |
| 110 | Sai Kung - Yan Ying | 51 | 50 | 0.92 |
| 110 | Yau Tsim Mong - Charming | 37 | 37 | 0.92 |
| 110 | Tai Po - Tai Po Central | 31 | 31 | 0.92 |

| Rank | Constituency | Number of respondents | Valid samples # | Mean (mask/day) * |
|------|--|-----------------------|-----------------|-------------------|
| 116 | Kowloon City - Ho Man Tin | 66 | 65 | 0.93 |
| 116 | Tuen Mun - Tsui Hing | 58 | 57 | 0.93 |
| 116 | Yuen Long - Kingswood North | 52 | 51 | 0.93 |
| 116 | Tuen Mun - Prime View | 57 | 56 | 0.93 |
| 120 | Wong Tai Sin - Chi Choi | 45 | 45 | 0.94 |
| 120 | Kwai Tsing - Greenfield | 59 | 58 | 0.94 |
| 120 | Sha Tin - Chun Fung | 38 | 38 | 0.94 |
| 120 | Tsuen Wan - Tsuen Wan Rural | 65 | 64 | 0.94 |
| 120 | Tuen Mun - Siu Hei | 39 | 39 | 0.94 |
| 120 | Yuen Long - Yuen Long Tung Tau | 35 | 35 | 0.94 |
| 120 | Wong Tai Sin - Fung Wong | 32 | 30 | 0.94 |
| 120 | Tai Po - Yee Fu | 33 | 33 | 0.94 |
| 120 | Sha Tin - Tai Shui Hang | 32 | 32 | 0.94 |
| 129 | Southern - Ap Lei Chau North | 35 | 35 | 0.95 |
| 129 | Tsuen Wan - Luk Yeung | 52 | 51 | 0.95 |
| 129 | Sham Shui Po - Lai Chi Kok Central | 53 | 53 | 0.95 |
| 129 | Islands - Tung Chung North | 30 | 30 | 0.95 |
| 129 | Sha Tin - Wong Uk | 55 | 55 | 0.95 |
| 129 | Sha Tin - Chung On | 36 | 35 | 0.95 |
| 129 | Sai Kung - Po Lam | 41 | 39 | 0.95 |
| 129 | Sha Tin - City One | 72 | 71 | 0.95 |
| 137 | Central & Western - Sai Wan | 31 | 31 | 0.96 |
| 137 | Kwun Tong - Hiu Lai | 48 | 48 | 0.96 |
| 137 | Sai Kung - O Tong | 49 | 48 | 0.96 |
| 137 | Sha Tin - Sha Tin Town Centre | 48 | 48 | 0.96 |
| 137 | Tsuen Wan - Ma Wan | 40 | 38 | 0.96 |
| 137 | Sha Tin - Tai Wai | 51 | 50 | 0.96 |
| 137 | Kwai Tsing - Tsing Yi Estate | 48 | 48 | 0.96 |
| 137 | Sham Shui Po - Mei Foo South | 53 | 53 | 0.96 |
| 145 | Sha Tin - Bik Woo | 39 | 38 | 0.97 |
| 145 | Southern - Wong Chuk Hang | 34 | 34 | 0.97 |
| 145 | Eastern - Tanner | 35 | 35 | 0.97 |
| 148 | Tuen Mun - Siu Chi | 51 | 49 | 0.98 |
| 148 | Kwai Tsing - Wah Lai | 33 | 32 | 0.98 |
| 148 | Sai Kung - Wai Yan | 37 | 37 | 0.98 |
| 148 | Yau Tsim Mong - East Tsim Sha Tsui & King's Park | 31 | 31 | 0.98 |
| 152 | Kowloon City - Oi Chun | 31 | 31 | 0.99 |
| 153 | Sai Kung - Fu Kwan | 40 | 40 | 1.00 |
| 153 | Sai Kung - Wai King | 63 | 63 | 1.00 |
| 153 | Kowloon City - Ma Hang Chung | 43 | 43 | 1.00 |

| Rank | Constituency | Number of respondents | Valid samples # | Mean (mask/day) * |
|---------------------------|---|-----------------------|-----------------|-------------------|
| 153 | Yuen Long - Fung Cheung | 42 | 41 | 1.00 |
| 157 | Tsuen Wan - Tsuen Wan Centre | 30 | 30 | 1.01 |
| 157 | Tsuen Wan - Tsuen Wan South | 40 | 40 | 1.01 |
| 157 | Yuen Long - Shap Pat Heung West | 37 | 37 | 1.01 |
| 157 | Sai Kung - Hoi Chun | 45 | 45 | 1.01 |
| 157 | Kowloon City - Ma Tau Wai | 36 | 35 | 1.01 |
| 162 | Wong Tai Sin - Tung Tau | 33 | 33 | 1.02 |
| 163 | Kwun Tong - Lam Tin | 42 | 42 | 1.03 |
| 163 | Kwun Tong - Ping Tin | 34 | 34 | 1.03 |
| 163 | Tsuen Wan - Hoi Bun | 64 | 64 | 1.03 |
| 163 | North - Luen Wo Hui | 37 | 37 | 1.03 |
| 163 | Yuen Long - Pat Heung South | 35 | 34 | 1.03 |
| 168 | Sham Shui Po - Po Lai | 31 | 30 | 1.04 |
| 169 | Tai Po - Tai Wo | 34 | 33 | 1.06 |
| 169 | Yuen Long - Ping Shan South | 38 | 36 | 1.06 |
| 171 | Sai Kung - Wan Po South | 46 | 46 | 1.07 |
| 171 | Eastern - Shau Kei Wan | 41 | 41 | 1.07 |
| 173 | Sai Kung - Fu Nam | 39 | 38 | 1.09 |
| 174 | Sha Tin - Yiu On | 34 | 33 | 1.13 |
| 174 | Tsuen Wan - Lai To | 43 | 43 | 1.13 |
| 176 | Tuen Mun - Tuen Mun Town Centre | 39 | 37 | 1.14 |
| 177 | Wong Tai Sin - Ching Oi | 36 | 36 | 1.16 |
| 177 | Yuen Long - Shap Pat Heung Central | 44 | 44 | 1.16 |
| 179 | Sha Tin - Hoi Nam | 39 | 39 | 1.17 |
| Inadequate subsample size | Kowloon City - Kai Tak East | 4 | 4 | 0.56 |
| Inadequate subsample size | Wan Chai - Stubbs Road | 16 | 16 | 0.64 |
| Inadequate subsample size | Tsuen Wan - Cheung Shek | 12 | 12 | 0.65 |
| Inadequate subsample size | Kowloon City - Sheung Lok | 21 | 21 | 0.66 |
| Inadequate subsample size | North - Queen's Hill | 24 | 23 | 0.67 |
| Inadequate subsample size | Southern - Bays Area | 6 | 6 | 0.68 |
| Inadequate subsample size | Wong Tai Sin - Tsz Wan West | 14 | 14 | 0.68 |
| Inadequate subsample size | Kowloon City - Lung Shing | 19 | 19 | 0.69 |
| Inadequate subsample size | Sham Shui Po - Nam Shan, Tai Hang Tung & Tai Hang Sai | 17 | 17 | 0.70 |
| Inadequate subsample size | Sai Kung - Kin Ming | 9 | 9 | 0.70 |

| Rank | Constituency | Number of respondents | Valid samples # | Mean (mask/day) * |
|---------------------------|---------------------------------------|------------------------------|------------------------|--------------------------|
| Inadequate subsample size | Tai Po - Kwong Fuk & Plover Cove | 16 | 16 | 0.71 |
| Inadequate subsample size | Wan Chai - Causeway Bay | 30 | 29 | 0.72 |
| Inadequate subsample size | Southern - Pokfulam | 24 | 24 | 0.73 |
| Inadequate subsample size | Wan Chai - Tai Hang | 26 | 25 | 0.73 |
| Inadequate subsample size | Central & Western - Peak | 14 | 14 | 0.73 |
| Inadequate subsample size | North - Sha Ta | 11 | 11 | 0.73 |
| Inadequate subsample size | Wong Tai Sin - Choi Hung | 12 | 12 | 0.74 |
| Inadequate subsample size | Yuen Long - Shap Pat Heung North | 13 | 13 | 0.74 |
| Inadequate subsample size | Yau Tsim Mong - Mong Kok South | 15 | 14 | 0.74 |
| Inadequate subsample size | Sha Tin - Sha Kok | 15 | 15 | 0.74 |
| Inadequate subsample size | Central & Western - Castle Road | 24 | 24 | 0.74 |
| Inadequate subsample size | Tsuen Wan - Lei Muk Shue West | 12 | 12 | 0.74 |
| Inadequate subsample size | Islands - Yat Tung Estate North | 15 | 15 | 0.74 |
| Inadequate subsample size | Sham Shui Po - Nam Cheong West | 20 | 20 | 0.75 |
| Inadequate subsample size | Wan Chai - Southorn | 20 | 20 | 0.75 |
| Inadequate subsample size | Yau Tsim Mong - Tsim Sha Tsui Central | 21 | 21 | 0.75 |
| Inadequate subsample size | Sham Shui Po - Lei Cheng Uk | 31 | 29 | 0.75 |
| Inadequate subsample size | Kwun Tong - Lok Wah North | 13 | 13 | 0.75 |
| Inadequate subsample size | Kowloon City - To Kwa Wan North | 11 | 11 | 0.76 |
| Inadequate subsample size | Wong Tai Sin - Chuk Yuen South | 10 | 10 | 0.76 |
| Inadequate subsample size | Islands - Lamma & Po Toi | 15 | 14 | 0.76 |
| Inadequate subsample size | Kwai Tsing - Tai Pak Tin East | 13 | 13 | 0.76 |
| Inadequate subsample size | Yau Tsim Mong - Kowloon Station | 18 | 18 | 0.76 |
| Inadequate subsample size | Kowloon City - Ma Tau Kok | 15 | 15 | 0.77 |
| Inadequate subsample size | Kwun Tong - Hip Hong | 11 | 11 | 0.77 |
| Inadequate | Sha Tin - Keng Hau | 28 | 28 | 0.77 |

| Rank | Constituency | Number of respondents | Valid samples # | Mean (mask/day) * |
|---------------------------|-------------------------------------|------------------------------|------------------------|--------------------------|
| subsample size | | | | |
| Inadequate subsample size | Sai Kung - Pak Sha Wan | 29 | 29 | 0.78 |
| Inadequate subsample size | Sham Shui Po - So Uk | 12 | 12 | 0.78 |
| Inadequate subsample size | Sai Kung - Sai Kung Central | 26 | 26 | 0.79 |
| Inadequate subsample size | Sai Kung - Hau Tak | 26 | 25 | 0.79 |
| Inadequate subsample size | Eastern - Fullview | 27 | 27 | 0.79 |
| Inadequate subsample size | Sham Shui Po - Fu Cheong | 18 | 17 | 0.79 |
| Inadequate subsample size | Southern - Wah Kwai | 28 | 28 | 0.79 |
| Inadequate subsample size | Southern - Ap Lei Chau Estate | 11 | 11 | 0.80 |
| Inadequate subsample size | Kwai Tsing - Kwai Shing East Estate | 18 | 18 | 0.81 |
| Inadequate subsample size | Central & Western - Sheung Wan | 25 | 24 | 0.81 |
| Inadequate subsample size | Eastern - Hing Man | 14 | 14 | 0.81 |
| Inadequate subsample size | Tuen Mun - King Hing | 14 | 14 | 0.81 |
| Inadequate subsample size | Islands - Cheung Chau | 21 | 21 | 0.81 |
| Inadequate subsample size | Eastern - Siu Sai Wan | 19 | 19 | 0.81 |
| Inadequate subsample size | Yau Tsim Mong - Yau Ma Tei North | 25 | 25 | 0.81 |
| Inadequate subsample size | Sham Shui Po - Shek Kip Mei | 17 | 17 | 0.82 |
| Inadequate subsample size | Sham Shui Po - Lai Kok | 12 | 12 | 0.82 |
| Inadequate subsample size | Yuen Long - Tsz Yau | 16 | 16 | 0.82 |
| Inadequate subsample size | Eastern - A Kung Ngam | 22 | 22 | 0.83 |
| Inadequate subsample size | Sham Shui Po - Un Chau | 23 | 23 | 0.83 |
| Inadequate subsample size | Kwai Tsing - Kwai Hing | 18 | 17 | 0.83 |
| Inadequate subsample size | North - Shing Fuk | 24 | 24 | 0.83 |
| Inadequate subsample size | Eastern - Tsui Tak | 29 | 29 | 0.83 |
| Inadequate subsample size | Yau Tsim Mong - Jordan South | 14 | 14 | 0.83 |
| Inadequate subsample size | Kwun Tong - Lok Wah South | 10 | 10 | 0.83 |

| Rank | Constituency | Number of respondents | Valid samples # | Mean (mask/day) * |
|---------------------------|-------------------------------------|------------------------------|------------------------|--------------------------|
| Inadequate subsample size | Yuen Long - Nam Ping | 10 | 10 | 0.83 |
| Inadequate subsample size | Yuen Long - Fung Nin | 24 | 23 | 0.84 |
| Inadequate subsample size | Yau Tsim Mong - Cherry | 18 | 18 | 0.84 |
| Inadequate subsample size | Tuen Mun - Butterfly | 18 | 18 | 0.84 |
| Inadequate subsample size | Kowloon City - Hung Hom Bay | 28 | 28 | 0.84 |
| Inadequate subsample size | Southern - Stanley & Shek O | 26 | 26 | 0.84 |
| Inadequate subsample size | Sham Shui Po - Ha Pak Tin | 19 | 19 | 0.85 |
| Inadequate subsample size | Yuen Long - Pat Heung North | 23 | 23 | 0.85 |
| Inadequate subsample size | Yuen Long - Chung Wah | 11 | 11 | 0.85 |
| Inadequate subsample size | Kwai Tsing - Lower Tai Wo Hau | 15 | 15 | 0.85 |
| Inadequate subsample size | Kwai Tsing - Kwai Shing West Estate | 15 | 15 | 0.85 |
| Inadequate subsample size | Wong Tai Sin - Tsz Wan East | 23 | 23 | 0.85 |
| Inadequate subsample size | Yau Tsim Mong - Tsim Sha Tsui West | 9 | 9 | 0.85 |
| Inadequate subsample size | Yau Tsim Mong - Mong Kok North | 18 | 18 | 0.85 |
| Inadequate subsample size | Tsuen Wan - Shek Wai Kok | 8 | 8 | 0.85 |
| Inadequate subsample size | Eastern - Kai Hiu | 14 | 14 | 0.86 |
| Inadequate subsample size | Central & Western - Shek Tong Tsui | 28 | 27 | 0.86 |
| Inadequate subsample size | Eastern - Fei Tsui | 12 | 12 | 0.86 |
| Inadequate subsample size | Tuen Mun - Yan Tin | 9 | 9 | 0.86 |
| Inadequate subsample size | Yuen Long - Hung Fuk | 9 | 9 | 0.86 |
| Inadequate subsample size | Southern - Lei Tung I | 22 | 22 | 0.86 |
| Inadequate subsample size | Wong Tai Sin - Wang Tau Hom | 21 | 20 | 0.87 |
| Inadequate subsample size | Yuen Long - Ching King | 22 | 22 | 0.87 |
| Inadequate subsample size | Sham Shui Po - Nam Cheong East | 23 | 21 | 0.87 |
| Inadequate subsample size | Wan Chai - Tin Hau | 22 | 22 | 0.88 |
| Inadequate | North - Sheung Shui Rural | 15 | 15 | 0.88 |

| Rank | Constituency | Number of respondents | Valid samples # | Mean (mask/day) * |
|---------------------------|--|------------------------------|------------------------|--------------------------|
| subsample size | | | | |
| Inadequate subsample size | North - Cheung Wah | 26 | 26 | 0.88 |
| Inadequate subsample size | Sai Kung - Po Yee | 26 | 26 | 0.88 |
| Inadequate subsample size | Eastern - Healthy Village | 23 | 22 | 0.88 |
| Inadequate subsample size | Kwun Tong - Yau Tong East | 11 | 11 | 0.88 |
| Inadequate subsample size | North - Fung Tsui | 16 | 16 | 0.88 |
| Inadequate subsample size | Kowloon City - Kai Tak Central & South | 14 | 14 | 0.88 |
| Inadequate subsample size | Kwun Tong - Kwong Tak | 21 | 21 | 0.88 |
| Inadequate subsample size | Kwai Tsing - Tai Pak Tin West | 14 | 14 | 0.88 |
| Inadequate subsample size | North - Shek Wu Hui | 26 | 26 | 0.88 |
| Inadequate subsample size | Yuen Long - Tin Yiu | 19 | 19 | 0.88 |
| Inadequate subsample size | Sha Tin - Kwong Yuen | 15 | 15 | 0.88 |
| Inadequate subsample size | Kwai Tsing - Lai King | 24 | 23 | 0.88 |
| Inadequate subsample size | Kwun Tong - Kwun Tong Central | 24 | 24 | 0.89 |
| Inadequate subsample size | Sha Tin - Sun Tin Wai | 19 | 19 | 0.89 |
| Inadequate subsample size | Kwun Tong - Hong Lok | 27 | 25 | 0.89 |
| Inadequate subsample size | Kwun Tong - Pak Nga | 28 | 28 | 0.89 |
| Inadequate subsample size | Sha Tin - Kwong Hong | 17 | 17 | 0.89 |
| Inadequate subsample size | Tuen Mun - On Ting | 21 | 20 | 0.89 |
| Inadequate subsample size | Tuen Mun - Yuet Wu | 27 | 27 | 0.89 |
| Inadequate subsample size | Sha Tin - Chui Ka | 24 | 24 | 0.89 |
| Inadequate subsample size | Sha Tin - Pok Hong | 28 | 28 | 0.89 |
| Inadequate subsample size | Kwai Tsing - Shek Lei South | 18 | 18 | 0.89 |
| Inadequate subsample size | Yuen Long - Chung Pak | 12 | 12 | 0.90 |
| Inadequate subsample size | Kwai Tsing - Hing Fong | 24 | 24 | 0.90 |

| Rank | Constituency | Number of respondents | Valid samples # | Mean (mask/day) * |
|---------------------------|--|------------------------------|------------------------|--------------------------|
| Inadequate subsample size | Tuen Mun - Yau Oi North | 21 | 21 | 0.90 |
| Inadequate subsample size | Wong Tai Sin - Lung Sheung | 26 | 26 | 0.90 |
| Inadequate subsample size | Wan Chai - Hennessy | 9 | 9 | 0.90 |
| Inadequate subsample size | Kwun Tong - Upper Ngau Tau Kok Estate | 14 | 14 | 0.90 |
| Inadequate subsample size | Southern - Lei Tung II | 19 | 19 | 0.90 |
| Inadequate subsample size | Kwai Tsing - Shek Yam | 18 | 18 | 0.90 |
| Inadequate subsample size | Islands - Lantau | 19 | 18 | 0.90 |
| Inadequate subsample size | Kwun Tong - Kwun Tong On Tai | 13 | 13 | 0.90 |
| Inadequate subsample size | Kowloon City - To Kwa Wan South | 20 | 20 | 0.90 |
| Inadequate subsample size | Kwun Tong - Po Lok | 14 | 14 | 0.90 |
| Inadequate subsample size | Tuen Mun - Lung Mun | 22 | 21 | 0.90 |
| Inadequate subsample size | Yuen Long - Yuen Long Centre | 15 | 15 | 0.91 |
| Inadequate subsample size | Central & Western - Kennedy Town & Mount Davis | 25 | 24 | 0.91 |
| Inadequate subsample size | Kwun Tong - Hing Tin | 24 | 24 | 0.91 |
| Inadequate subsample size | Wong Tai Sin - Lok Fu | 29 | 29 | 0.91 |
| Inadequate subsample size | Wong Tai Sin - Chuk Yuen North | 26 | 26 | 0.91 |
| Inadequate subsample size | Kwun Tong - Ting On | 13 | 13 | 0.91 |
| Inadequate subsample size | Sai Kung - Choi Kin | 29 | 27 | 0.91 |
| Inadequate subsample size | Kowloon City - Kowloon Tong | 29 | 29 | 0.91 |
| Inadequate subsample size | Yau Tsim Mong - Jordan North | 6 | 6 | 0.92 |
| Inadequate subsample size | Wong Tai Sin - Choi Wan East | 19 | 19 | 0.92 |
| Inadequate subsample size | Tsuen Wan - Tak Wah | 22 | 22 | 0.92 |

| Rank | Constituency | Number of respondents | Valid samples # | Mean (mask/day) * |
|---------------------------|----------------------------------|------------------------------|------------------------|--------------------------|
| Inadequate subsample size | Kwai Tsing - Tsing Yi South | 22 | 22 | 0.92 |
| Inadequate subsample size | Sham Shui Po - Lai Chi Kok North | 24 | 24 | 0.92 |
| Inadequate subsample size | Kowloon City - Hoi Sham | 22 | 22 | 0.92 |
| Inadequate subsample size | Eastern - Fort Street | 27 | 26 | 0.92 |
| Inadequate subsample size | Kwai Tsing - Shek Lei North | 10 | 9 | 0.93 |
| Inadequate subsample size | Sha Tin - Wo Che Estate | 26 | 26 | 0.93 |
| Inadequate subsample size | Kowloon City - Sung Wong Toi | 26 | 24 | 0.93 |
| Inadequate subsample size | Kwai Tsing - Upper Tai Wo Hau | 16 | 16 | 0.93 |
| Inadequate subsample size | Kwun Tong - Sau Mau Ping South | 13 | 12 | 0.93 |
| Inadequate subsample size | Sha Tin - Jat Chuen | 18 | 18 | 0.93 |
| Inadequate subsample size | Sai Kung - Sheung Tak | 24 | 23 | 0.93 |
| Inadequate subsample size | Kowloon City - Oi Man | 28 | 28 | 0.93 |
| Inadequate subsample size | Kowloon City - Kai Tak North | 10 | 10 | 0.93 |
| Inadequate subsample size | Tai Po - Wang Fuk | 28 | 28 | 0.93 |
| Inadequate subsample size | Yuen Long - Shap Pat Heung East | 12 | 12 | 0.94 |
| Inadequate subsample size | Kwun Tong - Ping Shek | 19 | 19 | 0.94 |
| Inadequate subsample size | Tsuen Wan - Yeung Uk Road | 26 | 26 | 0.94 |
| Inadequate subsample size | North - Tin Ping East | 24 | 24 | 0.94 |
| Inadequate subsample size | Sai Kung - Tak Ming | 31 | 29 | 0.95 |
| Inadequate subsample size | Eastern - Yue Wan | 19 | 19 | 0.95 |
| Inadequate subsample size | Kwun Tong - Sau Mau Ping North | 23 | 23 | 0.95 |
| Inadequate subsample size | Central & Western - Chung Wan | 27 | 27 | 0.95 |

| Rank | Constituency | Number of respondents | Valid samples # | Mean (mask/day) * |
|---------------------------|--------------------------------------|------------------------------|------------------------|--------------------------|
| Inadequate subsample size | Sai Kung - King Lam | 19 | 19 | 0.95 |
| Inadequate subsample size | Yuen Long - Shui Oi | 14 | 14 | 0.95 |
| Inadequate subsample size | Yau Tsim Mong - Mong Kok West | 16 | 16 | 0.95 |
| Inadequate subsample size | Tsuen Wan - Lei Muk Shue East | 16 | 16 | 0.95 |
| Inadequate subsample size | Kwun Tong - Kai Yip | 20 | 20 | 0.95 |
| Inadequate subsample size | Eastern - Upper Yiu Tung | 18 | 17 | 0.96 |
| Inadequate subsample size | Wan Chai - Broadwood | 19 | 19 | 0.96 |
| Inadequate subsample size | Yuen Long - Ha Tsuen | 19 | 18 | 0.96 |
| Inadequate subsample size | Kwai Tsing - Shing Hong | 23 | 23 | 0.96 |
| Inadequate subsample size | Yau Tsim Mong - Tai Kok Tsui South | 16 | 15 | 0.96 |
| Inadequate subsample size | Sha Tin - Lower Shing Mun | 20 | 20 | 0.96 |
| Inadequate subsample size | Tuen Mun - Yau Oi South | 18 | 18 | 0.96 |
| Inadequate subsample size | Kowloon City - Ka Wai | 25 | 25 | 0.97 |
| Inadequate subsample size | Tuen Mun - Tuen Mun Rural | 25 | 25 | 0.97 |
| Inadequate subsample size | Sham Shui Po - Pik Wui | 23 | 23 | 0.97 |
| Inadequate subsample size | Kwai Tsing - Kwai Chung Estate South | 13 | 13 | 0.97 |
| Inadequate subsample size | Islands - Mun Yat | 13 | 13 | 0.97 |
| Inadequate subsample size | Kwun Tong - Chun Cheung | 16 | 15 | 0.97 |
| Inadequate subsample size | Wan Chai - Jardine's Lookout | 18 | 18 | 0.98 |
| Inadequate subsample size | Tuen Mun - San Hui | 30 | 29 | 0.98 |
| Inadequate subsample size | North - Wah Ming | 15 | 15 | 0.98 |
| Inadequate subsample size | North - Tin Ping West | 15 | 15 | 0.98 |

| Rank | Constituency | Number of respondents | Valid samples # | Mean (mask/day) * |
|---------------------------|---|------------------------------|------------------------|--------------------------|
| Inadequate subsample size | Yuen Long - Ping Shan North | 16 | 16 | 0.98 |
| Inadequate subsample size | Eastern - Hing Tung | 28 | 27 | 0.98 |
| Inadequate subsample size | Kwun Tong - Choi Tak | 11 | 11 | 0.98 |
| Inadequate subsample size | Kwun Tong - Jordan Valley | 23 | 22 | 0.98 |
| Inadequate subsample size | Yuen Long - Yat Chak | 11 | 11 | 0.98 |
| Inadequate subsample size | Kwai Tsing - Ching Fat | 23 | 23 | 0.99 |
| Inadequate subsample size | Yuen Long - Ping Shan Central | 19 | 19 | 0.99 |
| Inadequate subsample size | Southern - Wah Fu South | 22 | 20 | 0.99 |
| Inadequate subsample size | Sham Shui Po - Lung Ping & Sheung Pak Tin | 21 | 21 | 0.99 |
| Inadequate subsample size | Wong Tai Sin - Tung Mei | 19 | 17 | 1.00 |
| Inadequate subsample size | Kwun Tong - Sau Mau Ping Central | 15 | 14 | 1.00 |
| Inadequate subsample size | Tsuen Wan - Fuk Loi | 10 | 10 | 1.00 |
| Inadequate subsample size | Yuen Long - Wang Yat | 9 | 8 | 1.00 |
| Inadequate subsample size | Yuen Long - San Tin | 11 | 11 | 1.00 |
| Inadequate subsample size | Kwai Tsing - Cheung Hang | 17 | 17 | 1.00 |
| Inadequate subsample size | Wong Tai Sin - Lung Ha | 28 | 27 | 1.01 |
| Inadequate subsample size | Wan Chai - Tai Fat Hau | 19 | 19 | 1.01 |
| Inadequate subsample size | Sham Shui Po - Nam Cheong South | 26 | 26 | 1.01 |
| Inadequate subsample size | Wan Chai - Oi Kwan | 23 | 23 | 1.01 |
| Inadequate subsample size | Yuen Long - Fu Yan | 21 | 21 | 1.01 |
| Inadequate subsample size | Kwun Tong - Sheung Shun | 19 | 19 | 1.01 |
| Inadequate subsample size | North - Choi Yuen | 21 | 21 | 1.02 |

| Rank | Constituency | Number of respondents | Valid samples # | Mean (mask/day) * |
|---------------------------|-------------------------------------|------------------------------|------------------------|--------------------------|
| Inadequate subsample size | Central & Western - Centre Street | 18 | 18 | 1.02 |
| Inadequate subsample size | Kwun Tong - Yau Tong West | 18 | 18 | 1.02 |
| Inadequate subsample size | North - Wah Do | 22 | 22 | 1.02 |
| Inadequate subsample size | Southern - Shek Yue | 19 | 19 | 1.02 |
| Inadequate subsample size | Tsuen Wan - Clague Garden | 26 | 26 | 1.03 |
| Inadequate subsample size | Sha Tin - Wan Shing | 27 | 27 | 1.03 |
| Inadequate subsample size | Sha Tin - Hin Ka | 29 | 28 | 1.03 |
| Inadequate subsample size | Tuen Mun - Sam Shing | 23 | 22 | 1.03 |
| Inadequate subsample size | Sham Shui Po - Lai Chi Kok South | 26 | 26 | 1.03 |
| Inadequate subsample size | Kwun Tong - Yau Lai | 15 | 15 | 1.03 |
| Inadequate subsample size | Central & Western - Mid Levels East | 28 | 28 | 1.04 |
| Inadequate subsample size | Tuen Mun - Po Tin | 7 | 7 | 1.04 |
| Inadequate subsample size | Yuen Long - Shui Wah | 14 | 14 | 1.04 |
| Inadequate subsample size | Tai Po - Fu Heng | 24 | 23 | 1.04 |
| Inadequate subsample size | Tai Po - Tai Po Hui | 13 | 13 | 1.04 |
| Inadequate subsample size | Kwun Tong - Shun Tin | 14 | 14 | 1.04 |
| Inadequate subsample size | Wong Tai Sin - Lung Tsui | 15 | 15 | 1.04 |
| Inadequate subsample size | Tai Po - Tai Yuen | 26 | 26 | 1.04 |
| Inadequate subsample size | Kwun Tong - On Lee | 11 | 11 | 1.05 |
| Inadequate subsample size | Tuen Mun - San King | 25 | 23 | 1.05 |
| Inadequate subsample size | Sham Shui Po - Nam Cheong Central | 7 | 7 | 1.05 |
| Inadequate subsample size | Kwun Tong - Tsui Ping | 18 | 18 | 1.05 |

| Rank | Constituency | Number of respondents | Valid samples # | Mean (mask/day) * |
|---------------------------|---------------------------------------|------------------------------|------------------------|--------------------------|
| Inadequate subsample size | Kwai Tsing - Kwai Luen | 17 | 16 | 1.05 |
| Inadequate subsample size | Eastern - Mount Parker | 21 | 19 | 1.05 |
| Inadequate subsample size | Yau Tsim Mong - Jordan West | 18 | 18 | 1.06 |
| Inadequate subsample size | Wong Tai Sin - Choi Wan South | 14 | 14 | 1.06 |
| Inadequate subsample size | Yuen Long - Tin Shing | 21 | 21 | 1.06 |
| Inadequate subsample size | Tuen Mun - Leung King | 16 | 16 | 1.06 |
| Inadequate subsample size | Wan Chai - Canal Road | 13 | 13 | 1.06 |
| Inadequate subsample size | Tuen Mun - Kin Sang | 28 | 28 | 1.07 |
| Inadequate subsample size | Yuen Long - Yiu Yau | 17 | 17 | 1.07 |
| Inadequate subsample size | Tuen Mun - Hing Tsak | 18 | 18 | 1.07 |
| Inadequate subsample size | Sha Tin - Tin Sum | 22 | 22 | 1.08 |
| Inadequate subsample size | Kwun Tong - On Tat | 6 | 6 | 1.08 |
| Inadequate subsample size | North - Fanling Town | 28 | 28 | 1.08 |
| Inadequate subsample size | North - Yu Tai | 22 | 22 | 1.08 |
| Inadequate subsample size | Sha Tin - Shui Chuen O | 10 | 10 | 1.08 |
| Inadequate subsample size | Kwai Tsing - Kwai Fong | 21 | 21 | 1.08 |
| Inadequate subsample size | Tai Po - Wan Tau Tong | 21 | 21 | 1.09 |
| Inadequate subsample size | Southern - Wah Fu North | 19 | 19 | 1.09 |
| Inadequate subsample size | Sha Tin - Heng On | 25 | 25 | 1.09 |
| Inadequate subsample size | Eastern - Tsui Wan | 20 | 20 | 1.10 |
| Inadequate subsample size | Eastern - Aldrich Bay | 27 | 26 | 1.10 |
| Inadequate subsample size | Wong Tai Sin - Tsui Chuk & Pang Ching | 28 | 28 | 1.10 |

| Rank | Constituency | Number of respondents | Valid samples # | Mean (mask/day) * |
|---------------------------|-------------------------------------|------------------------------|------------------------|--------------------------|
| Inadequate subsample size | Kwai Tsing - Lai Wah | 29 | 28 | 1.11 |
| Inadequate subsample size | North - Ching Ho | 10 | 9 | 1.11 |
| Inadequate subsample size | Wong Tai Sin - Choi Wan West | 16 | 15 | 1.12 |
| Inadequate subsample size | Eastern - Wan Tsui | 19 | 19 | 1.12 |
| Inadequate subsample size | Yuen Long - Shing Yan | 18 | 17 | 1.13 |
| Inadequate subsample size | Yau Tsim Mong - Tai Nan | 24 | 24 | 1.14 |
| Inadequate subsample size | Yuen Long - Tin Heng | 16 | 16 | 1.14 |
| Inadequate subsample size | Islands - Peng Chau & Hei Ling Chau | 9 | 9 | 1.15 |
| Inadequate subsample size | Tuen Mun - Shan King | 29 | 29 | 1.15 |
| Inadequate subsample size | Sham Shui Po - Fortune | 15 | 15 | 1.15 |
| Inadequate subsample size | Kwai Tsing - Cheung Hong | 24 | 24 | 1.15 |
| Inadequate subsample size | Eastern - Lower Yiu Tung | 17 | 16 | 1.16 |
| Inadequate subsample size | Kwun Tong - Po Tat | 12 | 12 | 1.17 |
| Inadequate subsample size | Sha Tin - Chui Tin | 29 | 28 | 1.17 |
| Inadequate subsample size | Sham Shui Po - Nam Cheong North | 13 | 13 | 1.17 |
| Inadequate subsample size | Wong Tai Sin - Fung Tak | 29 | 28 | 1.19 |
| Inadequate subsample size | Kwun Tong - Yau Chui | 23 | 23 | 1.21 |
| Inadequate subsample size | Tuen Mun - Tin King | 22 | 21 | 1.21 |
| Inadequate subsample size | Kowloon City - Lok Man | 28 | 27 | 1.22 |
| Inadequate subsample size | Kowloon City - Hung Hom | 14 | 13 | 1.22 |
| Inadequate subsample size | Sai Kung - Tsui Lam | 27 | 26 | 1.22 |
| Inadequate subsample size | Tuen Mun - Wu King | 11 | 11 | 1.23 |

| Rank | Constituency | Number of respondents | Valid samples # | Mean (mask/day) * |
|---------------------------|--------------------------------------|------------------------------|------------------------|--------------------------|
| Inadequate subsample size | Wong Tai Sin - Ching On | 13 | 12 | 1.25 |
| Inadequate subsample size | Yuen Long - Pek Long | 16 | 15 | 1.26 |
| Inadequate subsample size | Kwai Tsing - On Yam | 14 | 14 | 1.29 |
| Inadequate subsample size | Kwai Tsing - Cheung Ching | 25 | 25 | 1.34 |
| Inadequate subsample size | Tuen Mun - So Kwun Wat | 14 | 12 | 1.38 |
| Inadequate subsample size | Yuen Long - Yuet Yan | 12 | 12 | 1.46 |
| Inadequate subsample size | Kwai Tsing - Kwai Chung Estate North | 16 | 16 | 1.49 |
| Inadequate subsample size | Sha Tin - Lek Yuen | 14 | 14 | 1.57 |

Excludes cases of "refuse to answer"

* Numeric conversion as follows: "I do not use mask at all / already no mask to use=0 masks/day; 1 per more than 3 days=1/4 masks/day; 1 per 3 days=1/3 masks/day; 1 per 2 days=1/2 masks/day; 1 per day=1 masks/day; 2 per day=2 masks/day; 3 per day=3 masks/day; 4 per day=4 masks/day; more than 4 per day=5 masks/day."

Appendix 4

Number of Masks by Constituency

Appendix 4: CHIS result of each constituency -**"Number of Masks Available for Use" (Past 15 days data)**

| Rank | Constituency | Number of respondents | Valid samples | Mean (pieces) |
|-------------|---------------------------------------|------------------------------|----------------------|----------------------|
| 1 | Wan Chai - Happy Valley | 40 | 37 | 40.1 |
| 2 | Central & Western - Water Street | 38 | 38 | 41.0 |
| 3 | Yuen Long - Fairview Park | 56 | 54 | 42.9 |
| 4 | Sha Tin - Chung Tin | 30 | 30 | 43.2 |
| 5 | Kowloon City - Kadoorie | 56 | 54 | 44.4 |
| 5 | Central & Western - Belcher | 35 | 35 | 44.4 |
| 7 | Islands - Discovery Bay | 34 | 33 | 44.6 |
| 8 | Tai Po - Sai Kung North | 45 | 43 | 44.7 |
| 9 | Tai Po - Tai Po Kau | 40 | 40 | 45.4 |
| 10 | Kowloon City - Prince | 37 | 34 | 45.5 |
| 11 | Eastern - Yan Lam | 39 | 36 | 46.3 |
| 12 | Southern - Chi Fu | 59 | 59 | 46.6 |
| 13 | Tuen Mun - Lok Tsui | 34 | 33 | 47.0 |
| 14 | Kwun Tong - King Tin | 60 | 56 | 47.1 |
| 15 | Eastern - Tai Koo Shing East | 55 | 54 | 47.2 |
| 16 | Wong Tai Sin - Tin Keung | 36 | 35 | 47.9 |
| 16 | Sha Tin - Lee On | 32 | 32 | 47.9 |
| 18 | Southern - South Horizons West | 46 | 45 | 48.1 |
| 19 | Yuen Long - Kam Tin | 39 | 39 | 48.3 |
| 20 | Central & Western - Sai Ying Pun | 31 | 30 | 48.7 |
| 21 | Wong Tai Sin - San Po Kong | 38 | 36 | 49.0 |
| 22 | Eastern - Nam Fung | 52 | 51 | 49.6 |
| 23 | Tai Po - Lam Tsuen Valley | 37 | 35 | 50.1 |
| 23 | Central & Western - University | 54 | 53 | 50.1 |
| 25 | Tai Po - Chung Ting | 37 | 37 | 50.3 |
| 26 | Yuen Long - Shui Pin | 38 | 36 | 50.6 |
| 27 | Tuen Mun - Fu Tai | 31 | 30 | 50.7 |
| 27 | Sai Kung - Hong King | 31 | 30 | 50.7 |
| 29 | Eastern - Lok Hong | 32 | 32 | 50.9 |
| 30 | Wong Tai Sin - King Fu | 49 | 49 | 51.0 |
| 31 | Tai Po - Old Market & Serenity | 51 | 51 | 51.5 |
| 32 | Tai Po - Shuen Wan | 49 | 45 | 51.7 |
| 33 | Yau Tsim Mong - Tai Kok Tsui North | 41 | 39 | 52.1 |
| 34 | Sai Kung - Wan Hang | 42 | 42 | 52.2 |
| 35 | North - Yan Shing | 32 | 31 | 52.3 |
| 35 | Kwun Tong - Lower Ngau Tau Kok Estate | 37 | 35 | 52.3 |

| Rank | Constituency | Number of respondents | Valid samples | Mean (pieces) |
|------|--------------------------------------|-----------------------|---------------|---------------|
| 37 | Kowloon City - Hok Yuen Laguna Verde | 32 | 32 | 52.4 |
| 37 | Sham Shui Po - Cheung Sha Wan | 42 | 42 | 52.4 |
| 39 | Tuen Mun - Hanford | 47 | 46 | 52.5 |
| 40 | Sham Shui Po - Mei Foo Central | 44 | 42 | 52.6 |
| 41 | Sai Kung - Do Shin | 35 | 35 | 52.8 |
| 42 | Eastern - Lei King Wan | 43 | 43 | 53.1 |
| 43 | Islands - Tung Chung Central | 32 | 32 | 53.3 |
| 44 | Sha Tin - Ma On Shan Town Centre | 66 | 66 | 53.6 |
| 45 | Tsuen Wan - Allway | 33 | 33 | 53.7 |
| 46 | Kwun Tong - Laguna City | 81 | 79 | 53.9 |
| 46 | Islands - Tung Chung South | 43 | 40 | 53.9 |
| 46 | Kwai Tsing - Wai Ying | 42 | 41 | 53.9 |
| 49 | Kwun Tong - Kowloon Bay | 40 | 39 | 54.0 |
| 50 | Tai Po - Tai Wo | 34 | 33 | 54.5 |
| 51 | Sai Kung - Sai Kung Islands | 32 | 31 | 54.6 |
| 51 | Yuen Long - Kingswood South | 47 | 47 | 54.6 |
| 53 | Eastern - Fortress Hill | 49 | 49 | 54.7 |
| 54 | Southern - Aberdeen | 50 | 48 | 55.3 |
| 54 | Kwun Tong - Yuet Wah | 31 | 31 | 55.3 |
| 56 | Sai Kung - Nam On | 52 | 52 | 55.4 |
| 57 | Eastern - Kornhill Garden | 36 | 35 | 55.5 |
| 58 | Tuen Mun - Fu Sun | 38 | 38 | 55.6 |
| 59 | Wong Tai Sin - Lung Sing | 60 | 59 | 55.8 |
| 60 | Sha Tin - On Tai | 39 | 38 | 56.2 |
| 61 | Sham Shui Po - Mei Foo North | 51 | 50 | 56.4 |
| 62 | Tuen Mun - Siu Hong | 42 | 42 | 56.7 |
| 62 | Kwai Tsing - Cho Yiu | 39 | 38 | 56.7 |
| 62 | Sha Tin - Yu Yan | 56 | 55 | 56.7 |
| 65 | Southern - South Horizons East | 47 | 46 | 57.1 |
| 66 | Eastern - Heng Fa Chuen | 76 | 76 | 57.2 |
| 66 | North - Fanling South | 54 | 54 | 57.2 |
| 68 | Southern - Tin Wan | 35 | 35 | 57.4 |
| 68 | Central & Western - Tung Wah | 30 | 30 | 57.4 |
| 68 | Sha Tin - Di Yee | 41 | 40 | 57.4 |
| 71 | Sai Kung - Hang Hau East | 33 | 33 | 57.6 |
| 71 | Kowloon City - Ho Man Tin | 66 | 64 | 57.6 |
| 73 | Sha Tin - Wong Uk | 55 | 55 | 57.9 |
| 73 | Wan Chai - Victoria Park | 37 | 36 | 57.9 |
| 73 | Sai Kung - Kwong Ming | 34 | 33 | 57.9 |
| 73 | Tai Po - San Fu | 42 | 40 | 57.9 |
| 77 | Eastern - Braemar Hill | 44 | 43 | 58.0 |

| Rank | Constituency | Number of respondents | Valid samples | Mean (pieces) |
|------|----------------------------------|-----------------------|---------------|---------------|
| 77 | Kwai Tsing - On Ho | 43 | 42 | 58.0 |
| 77 | Sha Tin - Kam Ying | 37 | 37 | 58.0 |
| 77 | Yau Tsim Mong - Yau Ma Tei South | 32 | 30 | 58.0 |
| 81 | Sai Kung - Kwan Po | 47 | 47 | 58.1 |
| 82 | Sha Tin - Yue Shing | 58 | 57 | 58.2 |
| 82 | Eastern - Provident | 42 | 42 | 58.2 |
| 84 | Sham Shui Po - Yau Yat Tsuen | 40 | 39 | 58.4 |
| 84 | Kwun Tong - To Tai | 58 | 57 | 58.4 |
| 86 | Sha Tin - Chung On | 36 | 35 | 58.5 |
| 87 | Sha Tin - Fu Lung | 34 | 34 | 58.8 |
| 87 | Sha Tin - Tai Shui Hang | 32 | 32 | 58.8 |
| 87 | Eastern - Tai Koo Shing West | 52 | 50 | 58.8 |
| 87 | Kowloon City - Whampoa East | 35 | 35 | 58.8 |
| 91 | Tai Po - Po Nga | 38 | 38 | 58.9 |
| 92 | Kwun Tong - Lai Ching | 55 | 54 | 59.1 |
| 93 | Tuen Mun - Siu Chi | 51 | 46 | 59.2 |
| 94 | Southern - Wong Chuk Hang | 34 | 34 | 59.4 |
| 95 | Sai Kung - Hang Hau West | 33 | 33 | 59.8 |
| 96 | Yuen Long - Pat Heung South | 35 | 34 | 60.0 |
| 97 | Tai Po - Hong Lok Yuen | 36 | 35 | 60.2 |
| 98 | Sha Tin - Tai Wai | 51 | 50 | 60.2 |
| 99 | Kwai Tsing - Greenfield | 59 | 57 | 60.5 |
| 99 | Tuen Mun - Prime View | 57 | 56 | 60.5 |
| 99 | Sai Kung - Yan Ying | 51 | 50 | 60.5 |
| 99 | Islands - Tung Chung North | 30 | 30 | 60.5 |
| 103 | Kwai Tsing - Tsing Yi Estate | 48 | 48 | 60.9 |
| 103 | Yau Tsim Mong - Olympic | 34 | 33 | 60.9 |
| 105 | Kwun Tong - Hiu Lai | 48 | 48 | 61.1 |
| 106 | Yuen Long - Yuen Lung | 41 | 41 | 61.4 |
| 107 | Sha Tin - City One | 72 | 71 | 61.5 |
| 108 | Sha Tin - Chun Fung | 38 | 37 | 61.6 |
| 109 | Wong Tai Sin - Chi Choi | 45 | 45 | 61.7 |
| 110 | Sha Tin - Fo Tan | 43 | 42 | 61.8 |
| 111 | Kwai Tsing - Cheung On | 37 | 37 | 62.0 |
| 112 | Tuen Mun - Siu Tsui | 46 | 44 | 62.1 |
| 112 | Tuen Mun - Siu Hei | 39 | 39 | 62.1 |
| 114 | Sha Tin - Kam To | 46 | 46 | 62.2 |
| 114 | Tsuen Wan - Tsuen Wan West | 64 | 61 | 62.2 |
| 116 | Eastern - City Garden | 36 | 36 | 62.3 |
| 117 | Kowloon City - Ma Tau Wai | 36 | 34 | 62.4 |
| 118 | Tsuen Wan - Discovery Park | 47 | 47 | 62.6 |

| Rank | Constituency | Number of respondents | Valid samples | Mean (pieces) |
|------|--|-----------------------|---------------|---------------|
| 119 | Central & Western - Sai Wan | 31 | 31 | 63.0 |
| 120 | Sai Kung - Fu Kwan | 40 | 40 | 63.1 |
| 121 | Yuen Long - Kingswood North | 52 | 51 | 63.2 |
| 122 | Eastern - Kornhill | 53 | 52 | 63.3 |
| 123 | Sha Tin - Wu Kai Sha | 76 | 76 | 63.4 |
| 123 | Kwai Tsing - Wah Lai | 33 | 32 | 63.4 |
| 125 | Central & Western - Kwun Lung | 38 | 38 | 63.5 |
| 126 | Eastern - Kam Ping | 40 | 40 | 63.7 |
| 127 | Sham Shui Po - Lai Chi Kok Central | 53 | 53 | 63.8 |
| 127 | Sai Kung - Po Lam | 41 | 39 | 63.8 |
| 129 | Tai Po - Yee Fu | 33 | 33 | 63.9 |
| 130 | Tai Po - Tai Po Central | 31 | 31 | 64.2 |
| 130 | Yuen Long - Yuen Long Tung Tau | 35 | 34 | 64.3 |
| 132 | Tuen Mun - Tsui Hing | 58 | 57 | 64.3 |
| 133 | Sha Tin - Sui Wo | 62 | 60 | 64.8 |
| 133 | Kowloon City - Whampoa West | 62 | 61 | 64.8 |
| 135 | Sai Kung - Fu Nam | 39 | 38 | 64.9 |
| 136 | Sham Shui Po - Mei Foo South | 53 | 53 | 65.0 |
| 137 | Sai Kung - Wan Po North | 58 | 57 | 65.1 |
| 138 | Eastern - Sai Wan Ho | 46 | 45 | 65.3 |
| 138 | Kwun Tong - Ping Tin | 34 | 34 | 65.3 |
| 140 | Eastern - Quarry Bay | 34 | 34 | 65.5 |
| 140 | Tai Po - Fu Ming Sun | 34 | 34 | 65.5 |
| 140 | Kwun Tong - Lam Tin | 42 | 42 | 65.5 |
| 143 | Southern - Ap Lei Chau North | 35 | 34 | 65.9 |
| 143 | Sai Kung - Wai Yan | 37 | 37 | 65.9 |
| 145 | Sham Shui Po - Po Lai | 31 | 30 | 66.0 |
| 145 | Sha Tin - Bik Woo | 39 | 38 | 66.0 |
| 147 | Yau Tsim Mong - Fu Pak | 40 | 40 | 66.4 |
| 148 | Yau Tsim Mong - Mong Kok East | 34 | 34 | 66.8 |
| 149 | Sai Kung - Wai King | 63 | 63 | 67.5 |
| 149 | Yau Tsim Mong - East Tsim Sha Tsui & King's Park | 31 | 31 | 67.5 |
| 149 | Tsuen Wan - Tsuen Wan Rural | 65 | 64 | 67.5 |
| 152 | Sha Tin - Chun Ma | 48 | 48 | 68.3 |
| 153 | Sai Kung - O Tong | 49 | 48 | 68.8 |
| 154 | Tsuen Wan - Ting Sham | 52 | 52 | 69.0 |
| 155 | Yuen Long - Fung Cheung | 42 | 41 | 69.4 |
| 156 | Tsuen Wan - Luk Yeung | 52 | 51 | 69.5 |
| 157 | Eastern - Tanner | 35 | 35 | 69.7 |
| 158 | Tsuen Wan - Tsuen Wan South | 40 | 40 | 70.3 |

| Rank | Constituency | Number of respondents | Valid samples | Mean (pieces) |
|---------------------------|---|-----------------------|---------------|---------------|
| 159 | Yuen Long - Ping Shan South | 38 | 36 | 70.4 |
| 160 | Eastern - Shau Kei Wan | 41 | 41 | 71.1 |
| 161 | Tuen Mun - Tuen Mun Town Centre | 39 | 37 | 71.5 |
| 162 | Yau Tsim Mong - Charming | 37 | 37 | 72.0 |
| 163 | Tsuen Wan - Hoi Bun | 64 | 64 | 72.4 |
| 164 | Wong Tai Sin - Fung Wong | 32 | 30 | 72.7 |
| 165 | Tsuen Wan - Ma Wan | 40 | 38 | 72.8 |
| 166 | Tsuen Wan - Tsuen Wan Centre | 30 | 30 | 73.4 |
| 167 | Sha Tin - Sha Tin Town Centre | 48 | 47 | 73.5 |
| 168 | Kowloon City - Ma Hang Chung | 43 | 43 | 74.1 |
| 169 | Yuen Long - Shap Pat Heung West | 37 | 36 | 74.4 |
| 170 | North - Luen Wo Hui | 37 | 37 | 76.2 |
| 171 | Sai Kung - Wan Po South | 46 | 45 | 76.4 |
| 172 | Wong Tai Sin - Ching Oi | 36 | 36 | 76.6 |
| 173 | Yuen Long - Shap Pat Heung Central | 44 | 44 | 78.3 |
| 174 | Sai Kung - Hoi Chun | 45 | 44 | 79.9 |
| 175 | Sha Tin - Hoi Nam | 39 | 39 | 80.4 |
| 176 | Kowloon City - Oi Chun | 31 | 31 | 80.6 |
| 177 | Tsuen Wan - Lai To | 43 | 43 | 80.8 |
| 178 | Wong Tai Sin - Tung Tau | 33 | 33 | 82.4 |
| 179 | Sha Tin - Yiu On | 34 | 33 | 89.4 |
| Inadequate subsample size | Kowloon City - Kai Tak East | 4 | 4 | 28.1 |
| Inadequate subsample size | Islands - Yat Tung Estate North | 15 | 15 | 32.4 |
| Inadequate subsample size | Wong Tai Sin - Choi Hung | 12 | 12 | 33.1 |
| Inadequate subsample size | Sham Shui Po - Nam Shan, Tai Hang Tung & Tai Hang Sai | 17 | 17 | 33.5 |
| Inadequate subsample size | Sham Shui Po - So Uk | 12 | 12 | 36.3 |
| Inadequate subsample size | Tuen Mun - King Hing | 14 | 14 | 38.4 |
| Inadequate subsample size | Sham Shui Po - Shek Kip Mei | 17 | 17 | 38.6 |
| Inadequate subsample size | Wan Chai - Stubbs Road | 16 | 16 | 38.8 |
| Inadequate subsample size | Tsuen Wan - Cheung Shek | 12 | 12 | 38.8 |
| Inadequate subsample size | Kwai Tsing - Kwai Hing | 18 | 17 | 38.9 |
| Inadequate subsample size | North - Sha Ta | 11 | 10 | 39.1 |
| Inadequate subsample size | Yuen Long - Chung Wah | 11 | 11 | 39.1 |
| Inadequate | North - Queen's Hill | 24 | 23 | 39.4 |

| Rank | Constituency | Number of respondents | Valid samples | Mean (pieces) |
|---------------------------|---------------------------------------|------------------------------|----------------------|----------------------|
| subsample size | | | | |
| Inadequate subsample size | Kowloon City - To Kwa Wan North | 11 | 11 | 39.5 |
| Inadequate subsample size | Islands - Lamma & Po Toi | 15 | 14 | 39.6 |
| Inadequate subsample size | Sha Tin - Sha Kok | 15 | 15 | 39.6 |
| Inadequate subsample size | Yuen Long - Yat Chak | 11 | 11 | 40.3 |
| Inadequate subsample size | Wan Chai - Southorn | 20 | 20 | 40.8 |
| Inadequate subsample size | Wong Tai Sin - Tsz Wan West | 14 | 14 | 41.3 |
| Inadequate subsample size | Kowloon City - Sheung Lok | 21 | 21 | 41.5 |
| Inadequate subsample size | Yuen Long - Tsz Yau | 16 | 16 | 42.9 |
| Inadequate subsample size | Kwun Tong - Lok Wah South | 10 | 10 | 43.4 |
| Inadequate subsample size | North - Sheung Shui Rural | 15 | 14 | 43.4 |
| Inadequate subsample size | Eastern - Hing Man | 14 | 14 | 43.6 |
| Inadequate subsample size | Sham Shui Po - Fu Cheong | 18 | 17 | 44.0 |
| Inadequate subsample size | Tsuen Wan - Lei Muk Shue West | 12 | 11 | 44.0 |
| Inadequate subsample size | Islands - Cheung Chau | 21 | 21 | 44.3 |
| Inadequate subsample size | Tuen Mun - Yuet Wu | 27 | 27 | 44.4 |
| Inadequate subsample size | Yau Tsim Mong - Tsim Sha Tsui Central | 21 | 21 | 45.1 |
| Inadequate subsample size | Sha Tin - Lower Shing Mun | 20 | 20 | 45.2 |
| Inadequate subsample size | Islands - Lantau | 19 | 18 | 45.2 |
| Inadequate subsample size | Kowloon City - Ma Tau Kok | 15 | 15 | 45.3 |
| Inadequate subsample size | Kowloon City - Lung Shing | 19 | 19 | 45.3 |
| Inadequate subsample size | Kwun Tong - Lok Wah North | 13 | 13 | 45.5 |
| Inadequate subsample size | Sai Kung - Sai Kung Central | 26 | 26 | 45.6 |
| Inadequate subsample size | Sham Shui Po - Lai Kok | 12 | 12 | 46.0 |
| Inadequate subsample size | North - Shing Fuk | 24 | 24 | 46.3 |
| Inadequate subsample size | Eastern - Fullview | 27 | 27 | 46.5 |

| Rank | Constituency | Number of respondents | Valid samples | Mean (pieces) |
|---------------------------|-------------------------------------|------------------------------|----------------------|----------------------|
| Inadequate subsample size | Yau Tsim Mong - Mong Kok West | 16 | 16 | 47.2 |
| Inadequate subsample size | Kwai Tsing - Shek Lei North | 10 | 9 | 47.2 |
| Inadequate subsample size | Southern - Bays Area | 6 | 6 | 47.5 |
| Inadequate subsample size | Central & Western - Sheung Wan | 25 | 24 | 47.8 |
| Inadequate subsample size | Kwun Tong - Kwun Tong On Tai | 13 | 13 | 47.9 |
| Inadequate subsample size | North - Fung Tsui | 16 | 16 | 48.3 |
| Inadequate subsample size | Central & Western - Shek Tong Tsui | 28 | 27 | 48.9 |
| Inadequate subsample size | Kwai Tsing - Lai Wah | 29 | 28 | 49.0 |
| Inadequate subsample size | Southern - Ap Lei Chau Estate | 11 | 11 | 49.1 |
| Inadequate subsample size | Yau Tsim Mong - Yau Ma Tei North | 25 | 25 | 49.1 |
| Inadequate subsample size | Southern - Pokfulam | 24 | 24 | 49.1 |
| Inadequate subsample size | Yau Tsim Mong - Mong Kok North | 18 | 18 | 49.3 |
| Inadequate subsample size | Yau Tsim Mong - Kowloon Station | 18 | 18 | 49.4 |
| Inadequate subsample size | Yuen Long - Wang Yat | 9 | 8 | 49.5 |
| Inadequate subsample size | Kwun Tong - Yau Tong East | 11 | 11 | 49.5 |
| Inadequate subsample size | Kwai Tsing - Upper Tai Wo Hau | 16 | 16 | 49.8 |
| Inadequate subsample size | Kwai Tsing - Kwai Shing East Estate | 18 | 18 | 50.7 |
| Inadequate subsample size | Wong Tai Sin - Chuk Yuen South | 10 | 10 | 50.8 |
| Inadequate subsample size | Eastern - Siu Sai Wan | 19 | 19 | 50.8 |
| Inadequate subsample size | Kwai Tsing - Ching Fat | 23 | 23 | 50.8 |
| Inadequate subsample size | Wan Chai - Tai Fat Hau | 19 | 19 | 51.1 |
| Inadequate subsample size | Sha Tin - Kwong Hong | 17 | 17 | 51.1 |
| Inadequate subsample size | Sham Shui Po - Lai Chi Kok North | 24 | 24 | 51.1 |
| Inadequate subsample size | Kwun Tong - Ting On | 13 | 13 | 51.2 |
| Inadequate subsample size | Yuen Long - Pat Heung North | 23 | 23 | 51.4 |
| Inadequate | Sham Shui Po - Nam Cheong West | 20 | 20 | 51.5 |

| Rank | Constituency | Number of respondents | Valid samples | Mean (pieces) |
|---------------------------|-----------------------------------|------------------------------|----------------------|----------------------|
| subsample size | | | | |
| Inadequate subsample size | Kwun Tong - Pak Nga | 28 | 28 | 51.7 |
| Inadequate subsample size | Yuen Long - Shap Pat Heung East | 12 | 12 | 51.8 |
| Inadequate subsample size | Yau Tsim Mong - Mong Kok South | 15 | 14 | 51.9 |
| Inadequate subsample size | Kwun Tong - Sau Mau Ping North | 23 | 23 | 52.0 |
| Inadequate subsample size | Kwai Tsing - Tsing Yi South | 22 | 22 | 52.2 |
| Inadequate subsample size | Kwai Tsing - Tai Pak Tin East | 13 | 13 | 52.3 |
| Inadequate subsample size | Kwai Tsing - Lower Tai Wo Hau | 15 | 15 | 52.4 |
| Inadequate subsample size | Wong Tai Sin - Lok Fu | 29 | 29 | 52.5 |
| Inadequate subsample size | Wong Tai Sin - Tung Mei | 19 | 17 | 52.5 |
| Inadequate subsample size | Tuen Mun - Yau Oi South | 18 | 18 | 52.7 |
| Inadequate subsample size | Yuen Long - Tin Yiu | 19 | 19 | 52.9 |
| Inadequate subsample size | Sai Kung - Kin Ming | 9 | 8 | 53.1 |
| Inadequate subsample size | Southern - Lei Tung I | 22 | 22 | 53.2 |
| Inadequate subsample size | Kwun Tong - Hip Hong | 11 | 11 | 53.2 |
| Inadequate subsample size | North - Shek Wu Hui | 26 | 26 | 53.2 |
| Inadequate subsample size | Kwai Tsing - Shek Yam | 18 | 18 | 53.3 |
| Inadequate subsample size | Sai Kung - Hau Tak | 26 | 25 | 53.4 |
| Inadequate subsample size | Eastern - A Kung Ngam | 22 | 22 | 53.5 |
| Inadequate subsample size | Central & Western - Peak | 14 | 14 | 53.5 |
| Inadequate subsample size | Sha Tin - Pok Hong | 28 | 28 | 53.8 |
| Inadequate subsample size | Sai Kung - Po Yee | 26 | 25 | 53.8 |
| Inadequate subsample size | Tsuen Wan - Tak Wah | 22 | 22 | 53.8 |
| Inadequate subsample size | Sham Shui Po - Nam Cheong South | 26 | 26 | 53.9 |
| Inadequate subsample size | Sham Shui Po - Un Chau | 23 | 23 | 54.1 |
| Inadequate subsample size | Sham Shui Po - Nam Cheong Central | 7 | 7 | 54.2 |

| Rank | Constituency | Number of respondents | Valid samples | Mean (pieces) |
|---------------------------|--------------------------------------|------------------------------|----------------------|----------------------|
| Inadequate subsample size | Southern - Wah Kwai | 28 | 27 | 54.2 |
| Inadequate subsample size | Wan Chai - Causeway Bay | 30 | 29 | 54.3 |
| Inadequate subsample size | Kwun Tong - Sau Mau Ping South | 13 | 12 | 54.3 |
| Inadequate subsample size | Yuen Long - Shap Pat Heung North | 13 | 13 | 54.4 |
| Inadequate subsample size | Kwai Tsing - Kwai Luen | 17 | 16 | 54.5 |
| Inadequate subsample size | Tuen Mun - Wu King | 11 | 11 | 54.6 |
| Inadequate subsample size | Sai Kung - Tak Ming | 31 | 29 | 54.6 |
| Inadequate subsample size | Eastern - Upper Yiu Tung | 18 | 17 | 54.6 |
| Inadequate subsample size | Southern - Stanley & Shek O | 26 | 25 | 54.6 |
| Inadequate subsample size | Kwai Tsing - Kwai Chung Estate South | 13 | 13 | 54.8 |
| Inadequate subsample size | Yuen Long - Ha Tsuen | 19 | 18 | 54.8 |
| Inadequate subsample size | Kwai Tsing - Shing Hong | 23 | 23 | 54.9 |
| Inadequate subsample size | Central & Western - Castle Road | 24 | 24 | 55.0 |
| Inadequate subsample size | Kwun Tong - Hong Lok | 27 | 25 | 55.0 |
| Inadequate subsample size | North - Choi Yuen | 21 | 21 | 55.1 |
| Inadequate subsample size | Sham Shui Po - Lei Cheng Uk | 31 | 29 | 55.3 |
| Inadequate subsample size | Sha Tin - Keng Hau | 28 | 28 | 55.9 |
| Inadequate subsample size | Yuen Long - Ping Shan North | 16 | 16 | 56.1 |
| Inadequate subsample size | Tsuen Wan - Shek Wai Kok | 8 | 8 | 56.3 |
| Inadequate subsample size | Sha Tin - Wo Che Estate | 26 | 26 | 56.3 |
| Inadequate subsample size | Wong Tai Sin - Chuk Yuen North | 26 | 26 | 56.3 |
| Inadequate subsample size | Tuen Mun - Yau Oi North | 21 | 20 | 56.3 |
| Inadequate subsample size | Eastern - Fort Street | 27 | 26 | 56.5 |
| Inadequate subsample size | Wan Chai - Tai Hang | 26 | 25 | 56.7 |
| Inadequate subsample size | Yau Tsim Mong - Tai Kok Tsui South | 16 | 15 | 56.7 |
| Inadequate | Eastern - Tsui Tak | 29 | 29 | 56.9 |

| Rank | Constituency | Number of respondents | Valid samples | Mean (pieces) |
|---------------------------|----------------------------------|------------------------------|----------------------|----------------------|
| subsample size | | | | |
| Inadequate subsample size | Sha Tin - Sun Tin Wai | 19 | 19 | 56.9 |
| Inadequate subsample size | Sha Tin - Chui Ka | 24 | 24 | 56.9 |
| Inadequate subsample size | Sham Shui Po - Lai Chi Kok South | 26 | 26 | 57.0 |
| Inadequate subsample size | Wong Tai Sin - Lung Sheung | 26 | 26 | 57.0 |
| Inadequate subsample size | Sha Tin - Heng On | 25 | 25 | 57.1 |
| Inadequate subsample size | Kwun Tong - Kwong Tak | 21 | 21 | 57.5 |
| Inadequate subsample size | Kwun Tong - Po Lok | 14 | 14 | 57.5 |
| Inadequate subsample size | Yuen Long - Ching King | 22 | 22 | 57.5 |
| Inadequate subsample size | Eastern - Yue Wan | 19 | 19 | 57.6 |
| Inadequate subsample size | Yuen Long - Yuen Long Centre | 15 | 15 | 57.6 |
| Inadequate subsample size | Kwai Tsing - Cheung Hong | 24 | 24 | 57.9 |
| Inadequate subsample size | Southern - Shek Yue | 19 | 19 | 58.1 |
| Inadequate subsample size | Tuen Mun - Butterfly | 18 | 18 | 58.3 |
| Inadequate subsample size | Kowloon City - Hung Hom Bay | 28 | 28 | 58.5 |
| Inadequate subsample size | Kwun Tong - Choi Tak | 11 | 9 | 58.6 |
| Inadequate subsample size | Tuen Mun - San Hui | 30 | 29 | 58.7 |
| Inadequate subsample size | Tuen Mun - Yan Tin | 9 | 9 | 58.8 |
| Inadequate subsample size | Sham Shui Po - Nam Cheong North | 13 | 13 | 59.0 |
| Inadequate subsample size | Kowloon City - To Kwa Wan South | 20 | 19 | 59.3 |
| Inadequate subsample size | Tai Po - Kwong Fuk & Plover Cove | 16 | 16 | 59.7 |
| Inadequate subsample size | Kwai Tsing - Cheung Hang | 17 | 17 | 59.9 |
| Inadequate subsample size | Eastern - Fei Tsui | 12 | 12 | 60.0 |
| Inadequate subsample size | Sham Shui Po - Nam Cheong East | 23 | 20 | 60.1 |
| Inadequate subsample size | Kwun Tong - Ping Shek | 19 | 18 | 60.3 |
| Inadequate subsample size | Tuen Mun - Po Tin | 7 | 7 | 60.3 |

| Rank | Constituency | Number of respondents | Valid samples | Mean (pieces) |
|---------------------------|--|------------------------------|----------------------|----------------------|
| Inadequate subsample size | Eastern - Healthy Village | 23 | 22 | 60.6 |
| Inadequate subsample size | Yuen Long - Fung Nin | 24 | 23 | 60.7 |
| Inadequate subsample size | North - Wah Ming | 15 | 15 | 60.7 |
| Inadequate subsample size | Tai Po - Tai Yuen | 26 | 25 | 60.8 |
| Inadequate subsample size | Sai Kung - Pak Sha Wan | 29 | 29 | 60.8 |
| Inadequate subsample size | Yuen Long - Hung Fuk | 9 | 9 | 60.8 |
| Inadequate subsample size | Wong Tai Sin - Tsz Wan East | 23 | 21 | 60.8 |
| Inadequate subsample size | Kowloon City - Hoi Sham | 22 | 22 | 61.3 |
| Inadequate subsample size | Yuen Long - San Tin | 11 | 11 | 61.3 |
| Inadequate subsample size | Kwun Tong - Chun Cheung | 16 | 15 | 61.3 |
| Inadequate subsample size | Kwai Tsing - Lai King | 24 | 23 | 61.7 |
| Inadequate subsample size | Sha Tin - Kwong Yuen | 15 | 15 | 61.7 |
| Inadequate subsample size | Yau Tsim Mong - Tsim Sha Tsui West | 9 | 9 | 61.8 |
| Inadequate subsample size | Yau Tsim Mong - Jordan West | 18 | 18 | 61.8 |
| Inadequate subsample size | Wong Tai Sin - Ching On | 13 | 12 | 61.9 |
| Inadequate subsample size | Tsuen Wan - Fuk Loi | 10 | 10 | 62.0 |
| Inadequate subsample size | Sha Tin - Jat Chuen | 18 | 18 | 62.0 |
| Inadequate subsample size | Yuen Long - Shui Wah | 14 | 14 | 62.1 |
| Inadequate subsample size | North - Cheung Wah | 26 | 26 | 62.4 |
| Inadequate subsample size | Tuen Mun - Tuen Mun Rural | 25 | 25 | 62.4 |
| Inadequate subsample size | Kowloon City - Sung Wong Toi | 26 | 23 | 62.5 |
| Inadequate subsample size | Wong Tai Sin - Tsui Chuk & Pang Ching | 28 | 28 | 62.5 |
| Inadequate subsample size | Kwun Tong - On Tat | 6 | 6 | 62.5 |
| Inadequate subsample size | Tai Po - Wang Fuk | 28 | 28 | 62.5 |
| Inadequate subsample size | Southern - Lei Tung II | 19 | 19 | 62.6 |
| Inadequate | Kowloon City - Kai Tak Central & South | 14 | 14 | 62.8 |

| Rank | Constituency | Number of respondents | Valid samples | Mean (pieces) |
|---------------------------|--|------------------------------|----------------------|----------------------|
| subsample size | | | | |
| Inadequate subsample size | Eastern - Kai Hiu | 14 | 14 | 62.9 |
| Inadequate subsample size | Kwun Tong - Hing Tin | 24 | 24 | 63.1 |
| Inadequate subsample size | Kowloon City - Kowloon Tong | 29 | 29 | 63.2 |
| Inadequate subsample size | Kowloon City - Ka Wai | 25 | 25 | 63.2 |
| Inadequate subsample size | Kwun Tong - Shun Tin | 14 | 14 | 63.3 |
| Inadequate subsample size | Eastern - Tsui Wan | 20 | 20 | 63.3 |
| Inadequate subsample size | Tsuen Wan - Lei Muk Shue East | 16 | 16 | 63.3 |
| Inadequate subsample size | Tuen Mun - Hing Tsak | 18 | 18 | 63.3 |
| Inadequate subsample size | Sai Kung - King Lam | 19 | 19 | 63.4 |
| Inadequate subsample size | Sha Tin - Wan Shing | 27 | 26 | 63.5 |
| Inadequate subsample size | Wan Chai - Oi Kwan | 23 | 23 | 63.7 |
| Inadequate subsample size | Central & Western - Kennedy Town & Mount Davis | 25 | 24 | 63.8 |
| Inadequate subsample size | Yuen Long - Nam Ping | 10 | 10 | 64.0 |
| Inadequate subsample size | Yuen Long - Shui Oi | 14 | 14 | 64.1 |
| Inadequate subsample size | Kowloon City - Kai Tak North | 10 | 10 | 64.2 |
| Inadequate subsample size | Kwai Tsing - Tai Pak Tin West | 14 | 13 | 64.4 |
| Inadequate subsample size | Wan Chai - Tin Hau | 22 | 22 | 64.6 |
| Inadequate subsample size | Sai Kung - Choi Kin | 29 | 27 | 64.7 |
| Inadequate subsample size | Kwun Tong - Tsui Ping | 18 | 17 | 64.8 |
| Inadequate subsample size | Tuen Mun - Lung Mun | 22 | 21 | 65.0 |
| Inadequate subsample size | Kwai Tsing - Shek Lei South | 18 | 18 | 65.0 |
| Inadequate subsample size | Tuen Mun - San King | 25 | 23 | 65.0 |
| Inadequate subsample size | Central & Western - Centre Street | 18 | 18 | 65.2 |
| Inadequate subsample size | Sha Tin - Tin Sum | 22 | 22 | 65.5 |
| Inadequate subsample size | Wan Chai - Hennessy | 9 | 9 | 65.5 |

| Rank | Constituency | Number of respondents | Valid samples | Mean (pieces) |
|---------------------------|---|------------------------------|----------------------|----------------------|
| Inadequate subsample size | Yuen Long - Ping Shan Central | 19 | 18 | 65.7 |
| Inadequate subsample size | Sai Kung - Sheung Tak | 24 | 22 | 65.8 |
| Inadequate subsample size | Sham Shui Po - Pik Wui | 23 | 23 | 66.1 |
| Inadequate subsample size | Yuen Long - Chung Pak | 12 | 12 | 66.2 |
| Inadequate subsample size | Yau Tsim Mong - Cherry | 18 | 18 | 66.2 |
| Inadequate subsample size | Kwun Tong - Kwun Tong Central | 24 | 24 | 66.4 |
| Inadequate subsample size | Kwai Tsing - On Yam | 14 | 14 | 66.4 |
| Inadequate subsample size | Sha Tin - Hin Ka | 29 | 28 | 66.6 |
| Inadequate subsample size | Kwai Tsing - Kwai Shing West Estate | 15 | 15 | 66.7 |
| Inadequate subsample size | Wong Tai Sin - Fung Tak | 29 | 28 | 66.8 |
| Inadequate subsample size | Islands - Peng Chau & Hei Ling Chau | 9 | 9 | 67.2 |
| Inadequate subsample size | Wong Tai Sin - Choi Wan East | 19 | 19 | 67.4 |
| Inadequate subsample size | Wong Tai Sin - Lung Ha | 28 | 27 | 67.7 |
| Inadequate subsample size | Tai Po - Wan Tau Tong | 21 | 21 | 67.9 |
| Inadequate subsample size | Tuen Mun - So Kwun Wat | 14 | 12 | 67.9 |
| Inadequate subsample size | Kwun Tong - Po Tat | 12 | 12 | 68.0 |
| Inadequate subsample size | Kwun Tong - Yau Lai | 15 | 15 | 68.0 |
| Inadequate subsample size | Kwai Tsing - Hing Fong | 24 | 24 | 68.1 |
| Inadequate subsample size | Tuen Mun - On Ting | 21 | 20 | 68.4 |
| Inadequate subsample size | Yuen Long - Fu Yan | 21 | 21 | 68.4 |
| Inadequate subsample size | Kwun Tong - Upper Ngau Tau Kok Estate | 14 | 14 | 68.6 |
| Inadequate subsample size | Sham Shui Po - Lung Ping & Sheung Pak Tin | 21 | 21 | 68.7 |
| Inadequate subsample size | Wan Chai - Canal Road | 13 | 13 | 68.7 |
| Inadequate subsample size | Wong Tai Sin - Wang Tau Hom | 21 | 20 | 68.7 |
| Inadequate subsample size | Southern - Wah Fu South | 22 | 20 | 68.8 |
| Inadequate | Yuen Long - Tin Heng | 16 | 16 | 69.0 |

| Rank | Constituency | Number of respondents | Valid samples | Mean (pieces) |
|---------------------------|-------------------------------------|------------------------------|----------------------|----------------------|
| subsample size | | | | |
| Inadequate subsample size | Yau Tsim Mong - Jordan South | 14 | 14 | 69.3 |
| Inadequate subsample size | Islands - Mun Yat | 13 | 13 | 69.3 |
| Inadequate subsample size | Wong Tai Sin - Choi Wan West | 16 | 15 | 69.7 |
| Inadequate subsample size | Kwun Tong - Sau Mau Ping Central | 15 | 14 | 70.7 |
| Inadequate subsample size | Central & Western - Chung Wan | 27 | 26 | 70.8 |
| Inadequate subsample size | Southern - Wah Fu North | 19 | 19 | 70.9 |
| Inadequate subsample size | Central & Western - Mid Levels East | 28 | 28 | 71.2 |
| Inadequate subsample size | Wong Tai Sin - Choi Wan South | 14 | 14 | 71.3 |
| Inadequate subsample size | North - Ching Ho | 10 | 9 | 71.7 |
| Inadequate subsample size | Kwun Tong - Kai Yip | 20 | 20 | 71.7 |
| Inadequate subsample size | Sham Shui Po - Ha Pak Tin | 19 | 19 | 71.7 |
| Inadequate subsample size | Kowloon City - Lok Man | 28 | 27 | 71.8 |
| Inadequate subsample size | Tsuen Wan - Clague Garden | 26 | 26 | 72.4 |
| Inadequate subsample size | Tuen Mun - Tin King | 22 | 21 | 73.2 |
| Inadequate subsample size | Kowloon City - Oi Man | 28 | 27 | 73.3 |
| Inadequate subsample size | North - Tin Ping East | 24 | 24 | 73.5 |
| Inadequate subsample size | Kwun Tong - Jordan Valley | 23 | 22 | 73.8 |
| Inadequate subsample size | Kwai Tsing - Kwai Fong | 21 | 21 | 74.0 |
| Inadequate subsample size | Kwai Tsing - Cheung Ching | 25 | 25 | 74.2 |
| Inadequate subsample size | Kwun Tong - Yau Chui | 23 | 23 | 74.6 |
| Inadequate subsample size | Yuen Long - Tin Shing | 21 | 21 | 75.5 |
| Inadequate subsample size | Tuen Mun - Leung King | 16 | 16 | 75.5 |
| Inadequate subsample size | Eastern - Hing Tung | 28 | 27 | 76.5 |
| Inadequate subsample size | Eastern - Aldrich Bay | 27 | 26 | 76.8 |
| Inadequate subsample size | Kwun Tong - Yau Tong West | 18 | 18 | 77.0 |

| Rank | Constituency | Number of respondents | Valid samples | Mean (pieces) |
|---------------------------|------------------------------|------------------------------|----------------------|----------------------|
| Inadequate subsample size | Eastern - Wan Tsui | 19 | 19 | 77.0 |
| Inadequate subsample size | Wan Chai - Jardine's Lookout | 18 | 17 | 77.1 |
| Inadequate subsample size | Sha Tin - Chui Tin | 29 | 28 | 77.1 |
| Inadequate subsample size | Tsuen Wan - Yeung Uk Road | 26 | 26 | 77.2 |
| Inadequate subsample size | Kwun Tong - Sheung Shun | 19 | 19 | 77.3 |
| Inadequate subsample size | North - Wah Do | 22 | 21 | 78.2 |
| Inadequate subsample size | Yau Tsim Mong - Jordan North | 6 | 6 | 78.5 |
| Inadequate subsample size | Tai Po - Tai Po Hui | 13 | 13 | 78.5 |
| Inadequate subsample size | Yuen Long - Pek Long | 16 | 15 | 79.5 |
| Inadequate subsample size | North - Yu Tai | 22 | 22 | 80.1 |
| Inadequate subsample size | Tuen Mun - Shan King | 29 | 29 | 80.6 |
| Inadequate subsample size | Yuen Long - Shing Yan | 18 | 17 | 80.6 |
| Inadequate subsample size | Yuen Long - Yuet Yan | 12 | 12 | 82.0 |
| Inadequate subsample size | Yuen Long - Yiu Yau | 17 | 17 | 83.0 |
| Inadequate subsample size | Tuen Mun - Kin Sang | 28 | 27 | 83.0 |
| Inadequate subsample size | Kwun Tong - On Lee | 11 | 11 | 83.2 |
| Inadequate subsample size | Wan Chai - Broadwood | 19 | 18 | 83.4 |
| Inadequate subsample size | Tuen Mun - Sam Shing | 23 | 22 | 84.4 |
| Inadequate subsample size | Eastern - Mount Parker | 21 | 19 | 85.7 |
| Inadequate subsample size | Yau Tsim Mong - Tai Nan | 24 | 24 | 85.7 |
| Inadequate subsample size | North - Fanling Town | 28 | 28 | 86.0 |
| Inadequate subsample size | Tai Po - Fu Heng | 24 | 23 | 86.3 |
| Inadequate subsample size | Wong Tai Sin - Lung Tsui | 15 | 15 | 86.7 |
| Inadequate subsample size | Eastern - Lower Yiu Tung | 17 | 16 | 89.8 |
| Inadequate subsample size | Sha Tin - Lek Yuen | 14 | 14 | 90.8 |
| Inadequate | Sai Kung - Tsui Lam | 27 | 26 | 92.2 |

| Rank | Constituency | Number of respondents | Valid samples | Mean (pieces) |
|---------------------------|--------------------------------------|------------------------------|----------------------|----------------------|
| subsample size | | | | |
| Inadequate subsample size | Kowloon City - Hung Hom | 14 | 13 | 93.7 |
| Inadequate subsample size | Kwai Tsing - Kwai Chung Estate North | 16 | 16 | 94.8 |
| Inadequate subsample size | Sham Shui Po - Fortune | 15 | 15 | 99.2 |
| Inadequate subsample size | North - Tin Ping West | 15 | 15 | 103.8 |
| Inadequate subsample size | Sha Tin - Shui Chuen O | 10 | 9 | 109.1 |