

HONG KONG PUBLIC OPINION PROGRAM
HONG KONG PUBLIC OPINION RESEARCH INSTITUTE
香港民意研究所 之 香港民意研究計劃

Tel 電話: (852) 3917 7700

Fax 傳真: (852) 2546 0561

Website 網址: <https://www.pori.hk>

Address 地址: 3rd Floor, SPA Centre, 53-55 Lockhart Road, Wanchai, Hong Kong

香港灣仔駱克道 53-55 號恆澤商業大廈 3 樓

採訪邀請

香港民研發布會：公布最新「我們香港人」 及政府官員民望調查

香港民意研究所之香港民意研究計劃（香港民研）將於下星期二（11月12日）舉行發布會，發放最新「我們香港人 We Hongkongers」滾動民調的結果，以及香港民研定期發放之特區政府官員民望調查結果，題目包括：

「我們香港人」民意調查

- Q1：你有幾支持或者反對政府根據法例成立獨立調查委員會，去調查警方嘅反修例事件之中使用武力嘅情況？
- Q2：社會上有意見認為警方嘅 8.31 太子站事件隱瞞事實。你有幾贊成或者反對呢種講法？
- Q3：社會上有意見認為警方嘅新屋嶺扣留中心性侵犯被捕示威者。你有幾贊成或者反對呢種講法？
- Q4：社會上有意見認為應該立即取消立法會功能組別。你有幾贊成或者反對呢種講法？
- Q5：社會上有意見認為應該立即實行一人一票普選立法會同行政長官。你有幾贊成或者反對呢種講法？
- Q6：你有幾支持或者反對而家集會遊行要申請不反對通知書嘅制度？
- Q7：你有幾支持或者反對就職業訓練局青年學院 15 歲女學生陳彥霖嘅死召開死因聆訊？

香港民研定期發放之政府官員民望調查

- 特首及三位司長評分及支持率
- 十三位局長支持率

歡迎派員採訪或贊助上述所有調查，每題港幣八千元，贊助人士可以優先獲得結果。發布會上，客席評論員將會演繹結果，詳情如下：

日期： 2019 年 11 月 12 日（星期二）

時間： 下午 2 時 30 分

地點： 灣仔駱克道 53-55 號恆澤商業大廈 3 樓 #

講者： 香港民意研究所主席及行政總裁

香港民意研究所數據科學經理

香港城市大學專上學院社會科學院講師

（以及一位青年評論員，待定）

鍾庭耀

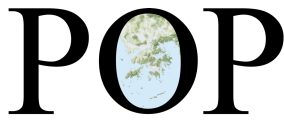
戴捷輝

黃志偉

查詢：請致電 3917 7700 聯絡李小姐或彭小姐。

2019 年 11 月 8 日

由於本大廈地下正進行翻新工程，正門出口現已關閉，請按附件中指示經後門進入大廈，不便之處，敬請原諒。



HONG KONG PUBLIC OPINION PROGRAM
HONG KONG PUBLIC OPINION RESEARCH INSTITUTE
香港民意研究所 之 香港民意研究計劃

Tel 電話: (852) 3917 7700

Fax 傳真: (852) 2546 0561

Website 網址: <https://www.pori.hk>

Address 地址: 3rd Floor, SPA Centre, 53-55 Lockhart Road, Wanchai, Hong Kong

香港灣仔駱克道 53-55 號恆澤商業大廈 3 樓

Press Invitation

HKPOP Press Conference: Announcing the Latest Surveys of “We Hongkongers” and Popularity of Government Officials

Hong Kong Public Opinion Program (HKPOP) under the Hong Kong Public Opinion Research Institute (HKPORI) will hold a press conference **next Tuesday (November 12)**, where HKPOP will release the latest results of “We Hongkongers” rolling survey, as well as HKPOP’s tracking survey on the popularity of officials of the SAR Government, with questions including:

“We Hongkongers” Survey

- Q1: How much do you support or oppose the setting up of a statutory independent commission of inquiry by the government to look into the use of force by the Police Force in the anti-extradition law incidents?
- Q2: There are views in the society saying the Police Force have concealed what happened in Prince Edward station on August 31. How much do you agree or disagree with this view?
- Q3: There are views in the society saying the Police Force have sexually assaulted arrested protesters in San Uk Ling Holding Centre. How much do you agree or disagree with this view?
- Q4: There are views in the society saying functional constituencies in the Legislative Council should be abolished immediately. How much do you agree or disagree with this view?
- Q5: There are views in the society saying universal suffrage of “one person, one vote” for the Legislative Council and the Chief Executive should be implemented immediately. How much do you agree or disagree with this view?
- Q6: How much do you support or oppose the current system under which rallies and processions require application for letters of no objection?
- Q7: How much do you support or oppose the holding of a coroner’s inquest into the death of Chan Yin Lam, a 15-year-old female student of VTC Youth College?

HKPOP’s Tracking Survey on Popularity of Government Officials

- Rating and approval rate of the Chief Executive and three Secretaries of Departments
- Approval rates of thirteen Directors of Bureaux

Media are invited to send representatives to attend the press conference and to sponsor any of the above-mentioned surveys, at \$8,000 per question. All sponsors will receive the results in advance. At the press conference, honorary commentators will interpret the results. Details are as follows:

Date: November 12, 2019 (Tuesday)

Time: 2:30pm

Venue: 3rd Floor, SPA Centre, 53-55 Lockhart Road, Wanchai #

Speakers: Robert Chung President and CEO, Hong Kong Public Opinion Research Institute
Edward Tai Data Science Manager, Hong Kong Public Opinion Research Institute
Paul Wong Lecturer, Faculty of Social Sciences, Community College of City University
(and one young commentator, to be confirmed)

For any enquiries, please contact Miss Lee or Miss Pang at 3917 7700.

November 8, 2019

The front entrance at ground floor of SPA Centre has been closed due to maintenance works. Please follow the instructions on the appendix to enter the building via the rear entry. We are sorry for any inconvenience caused.

通告

Notice

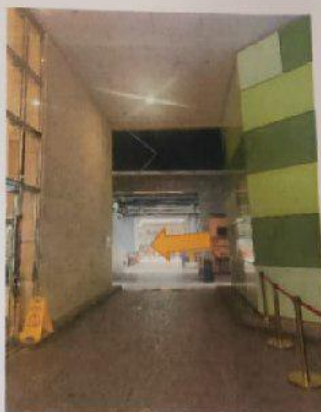
後樓梯出入口路線指示 Rear Entry Route

本大廈將於 9 月 23 日開始大堂翻新工程，現提供後樓梯出入口路線，如各業主有任何疑問，歡迎查詢。

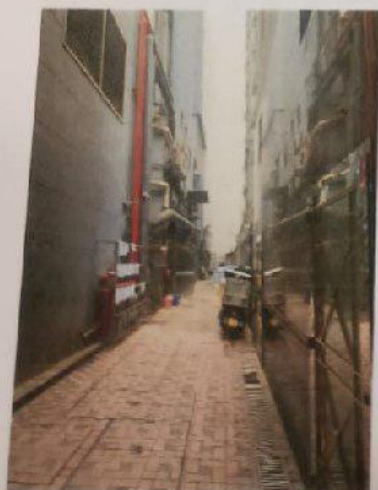
- 由後巷到一樓電梯：先從駱克道華美粵海酒店旁邊停車位行人
→ 再轉左手邊後巷 → 一直行到接近尾 → 後門在左手邊



1) 從華美粵海酒店旁邊停車位行人



2) 行幾步再轉入左手邊後巷



3) 一直行到接近尾



4) 後門在左手邊



SPAL Management Ltd.

恆澤物業管理處

2019.9.19