

HONG KONG PUBLIC OPINION PROGRAM
HONG KONG PUBLIC OPINION RESEARCH INSTITUTE
香港民意研究所 之 香港民意研究計劃

Tel 電話: (852) 3917 7700

Fax 傳真: (852) 2546 0561

Website 網址: <https://www.pori.hk>

Address 地址: 3rd Floor, SPA Centre, 53-55 Lockhart Road, Wanchai, Hong Kong

香港灣仔駱克道 53-55 號恆澤商業大廈 3 樓

採訪邀請

香港民研發布會：報告「我們香港人」計劃最新發展 以及公布「世界同行」倡導計劃

香港民意研究所之香港民意研究計劃（香港民研）將於明天（11月1日）舉行發布會，報告「我們香港人 We Hongkongers」計劃的進度及發展，包括發放最新滾動民調的結果，以及一名市民透過「公民社會贊助計劃」使用滾動調查平台委託進行的調查結果，題目如下：

「我們香港人」民意調查

- Q1：社會上有意見認為警方喺 7.21 事件同黑社會合作。你有幾贊成或者反對呢種講法？
- Q2：社會上有意見認為警察之中混入咗中國公安或者武警。你有幾相信呢種講法？
- Q3：美國國會現正審議《香港人權與民主法案》，內容包括制裁美國認為有侵犯香港人權嘅人。你有幾支持或者反對呢個法案？
- Q4：有市民發起改變消費習慣，例如藉杯葛或支持個別品牌或者商店嚟表達對《逃犯條例》修訂風波嘅立場。你有幾支持或者反對呢種做法？
- Q5：有市民發起不合作運動，例如堵塞交通同埋罷工等，藉此促使政府回應訴求。你有幾支持或者反對呢啲不合作運動？

「公民社會贊助計劃」民意調查

- Q6：你有幾支持或者反對美國以《香港人權及民主法案》制裁負責取消黃之鋒參選資格嘅政府官員？

發布會將會同時公布「世界同行 World Connect」倡導計劃的內容和發展方向，安排大致如下：

日期： 2019 年 11 月 1 日（星期五）

時間： 上午 11 時正

地點： 灣仔駱克道 53-55 號恆澤商業大廈 3 樓 #

講者： 香港民意研究所主席及行政總裁

香港民研「我們香港人」計劃名譽總監

香港民研「我們香港人」計劃名譽總監

香港民意研究所數據科學經理

鍾庭耀

梁啟智

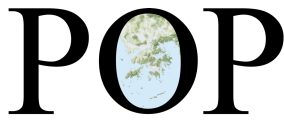
黃偉國

戴捷輝

查詢：請致電 3917 7700 聯絡李小姐或彭小姐。

2019 年 10 月 31 日

由於本大廈地下正進行翻新工程，正門出口現已關閉，請按附件中指示經後門進入大廈，不便之處，敬請原諒。



HONG KONG PUBLIC OPINION PROGRAM
HONG KONG PUBLIC OPINION RESEARCH INSTITUTE
香港民意研究所 之 香港民意研究計劃

Tel 電話: (852) 3917 7700

Fax 傳真: (852) 2546 0561

Website 網址: <https://www.pori.hk>

Address 地址: 3rd Floor, SPA Centre, 53-55 Lockhart Road, Wanchai, Hong Kong

香港灣仔駱克道 53-55 號恆澤商業大廈 3 樓

Press Invitation

HKPOP Press Conference: Reporting the Latest Development of “We Hongkongers” and Announcing the “World Connect” Initiative

Hong Kong Public Opinion Program (HKPOP) under the Hong Kong Public Opinion Research Institute (HKPORI) will hold a press conference **tomorrow (November 1)**, where HKPOP will report the progress and latest development of “We Hongkongers”, including the release of its latest rolling survey results, as well as the result of a citizen-sponsored question via the Civic Society Sponsorship Scheme that rode on the rolling survey platform, with questions including:

“We Hongkongers” Survey

- Q1: There are views in the society saying the 7.21 incident involved collusion of the Police Force and triads. How much do you agree or disagree with this view?
- Q2: There are views in the society saying there are Chinese People’s Police or People’s Armed Police Force in the Police Force. How much do you believe in this view?
- Q3: The U.S. Congress is reviewing the Hong Kong Human Rights and Democracy Act, which would sanction people thought to have infringed human rights in Hong Kong. How much do you support or oppose this Act?
- Q4: Some people initiated changes in consumption patterns, such as boycotting or supporting selected brands or shops to express their views toward the anti-extradition law protests. How much do you support or oppose such behavior?
- Q5: Some people initiated a non-cooperation movement, which involved actions such as blocking traffic and going on strike, to push the government to respond to their demands. How much do you support or oppose the non-cooperation movement?

“Civic Society Sponsorship Scheme” Survey

- Q6: How much do you support or oppose the U.S. using the Hong Kong Human Rights and Democracy Act to sanction the government official(s) who had Joshua Wong disqualified from running in election?

There will also be an announcement on the direction and details of the “World Connect 世界同行” Initiative. Arrangements of the press conference are roughly as follows:

Date:	November 1, 2019 (Friday)		
Time:	11:00am		
Venue:	3rd Floor, SPA Centre, 53-55 Lockhart Road, Wanchai #		
Speakers:	Robert Chung	President and CEO, Hong Kong Public Opinion Research Institute	
	Leung Kai Chi	Honorary Director, “We Hongkongers” Initiative, HKPORI	
	Benson Wong	Honorary Director, “We Hongkongers” Initiative, HKPORI	
	Edward Tai	Data Science Manager, Hong Kong Public Opinion Research Institute	

For any enquiries, please contact Miss Lee or Miss Pang at 3917 7700.

October 31, 2019

The front entrance at ground floor of SPA Centre has been closed due to maintenance works. Please follow the instructions on the appendix to enter the building via the rear entry. We are sorry for any inconvenience caused.

通告

Notice

後樓梯出入口路線指示 Rear Entry Route

本大廈將於 9 月 23 日開始大堂翻新工程，現提供後樓梯出入口路線，如各業主有任何疑問，歡迎查詢。

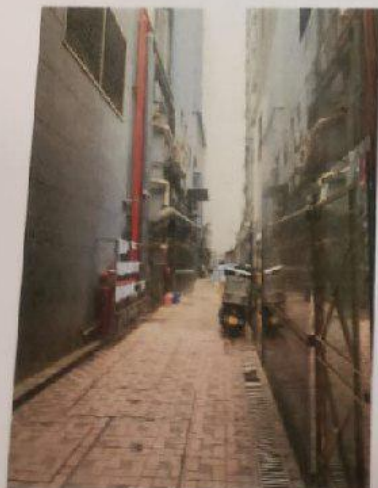
- 由後巷到一樓電梯：先從駱克道華美粵海酒店旁邊停車位行人
→ 再轉左手邊後巷 → 一直行到接近尾 → 後門在左手邊



1) 從華美粵海酒店旁邊停車位行人



2) 行幾步再轉入左手邊後巷



3) 一直行到接近尾



4) 後門在左手邊



SPAL Management Ltd.

恆澤物業管理處

2019.9.19