

POP



HONG KONG PUBLIC OPINION PROGRAM

HONG KONG PUBLIC OPINION RESEARCH INSTITUTE

香港民意研究所 之 香港民意研究計劃

Latest Tracking Poll Results

February 2, 2021

Contact Information

2

	Naming stage	Rating stage
Date of survey	4-8/1/2021	18-22/1/2021
Survey method	Random telephone survey conducted by real interviewers	
Target population	Cantonese-speaking Hong Kong residents aged 18 or above	
Sample size	1,000 (including 492 landline and 508 mobile samples)	1,011 (including 509 landline and 502 mobile samples)
Effective response rate	58.5%	67.2%
Sampling error	Sampling error of ratings not more than +/-3.4 at 95% conf. level	
Weighting method	Rim-weighted according to figures provided by the Census and Statistics Department. The gender-age distribution of the Hong Kong population came from “Mid-year population for 2019”, while the educational attainment (highest level attended) distribution and economic activity status distribution came from “Women and Men in Hong Kong - Key Statistics (2019 Edition)”.	

Survey Topic

3

- **Popularity of Cross-strait Political Figures**
 - Top Ten Political Figures in Mainland China and Taiwan - Naming
 - Top Ten Political Figures in Mainland China and Taiwan - Rating

Survey Result - Popularity of Cross-strait Political Figures

4

- **Top Ten Political Figures in Mainland China and Taiwan – Naming**

Rank	Political figures	Region	20-21/7/2020	4-8/1/2021	Change	Change in ranking
1	Xi Jinping	China	79%	77%	▼2%	--
2	Tsai Ing-wen	Taiwan	73%	72%	▼1%	--
3	Ma Ying-jeou	Taiwan	27%	30%	▲4%	▲1
4	Li Keqiang	China	34%	22%	▼12% *	▼1
5	Hu Jintao	China	18%	20%	▲2%	--
6	Jiang Zemin	China	17%	17%	--	--
7	Wen Jiabao	China	13%	15%	▲2%	▲1
8	Chen Shui-bian	Taiwan	15%	15%	--	▼1
9	Zhu Rongji	China	7%	9%	▲3%	▲1
10	Wang Qishan	China	3%	6%	▲3% *	▲6
11	Han Kuo-yu	Taiwan	9%	5%	▼4% *	▼2
12	Su Tseng-chang	Taiwan	3%	5%	▲2%	▲5

* Significant change

Survey Result - Popularity of Cross-strait Political Figures

5

• Top Ten Political Figures in Mainland China and Taiwan - Rating

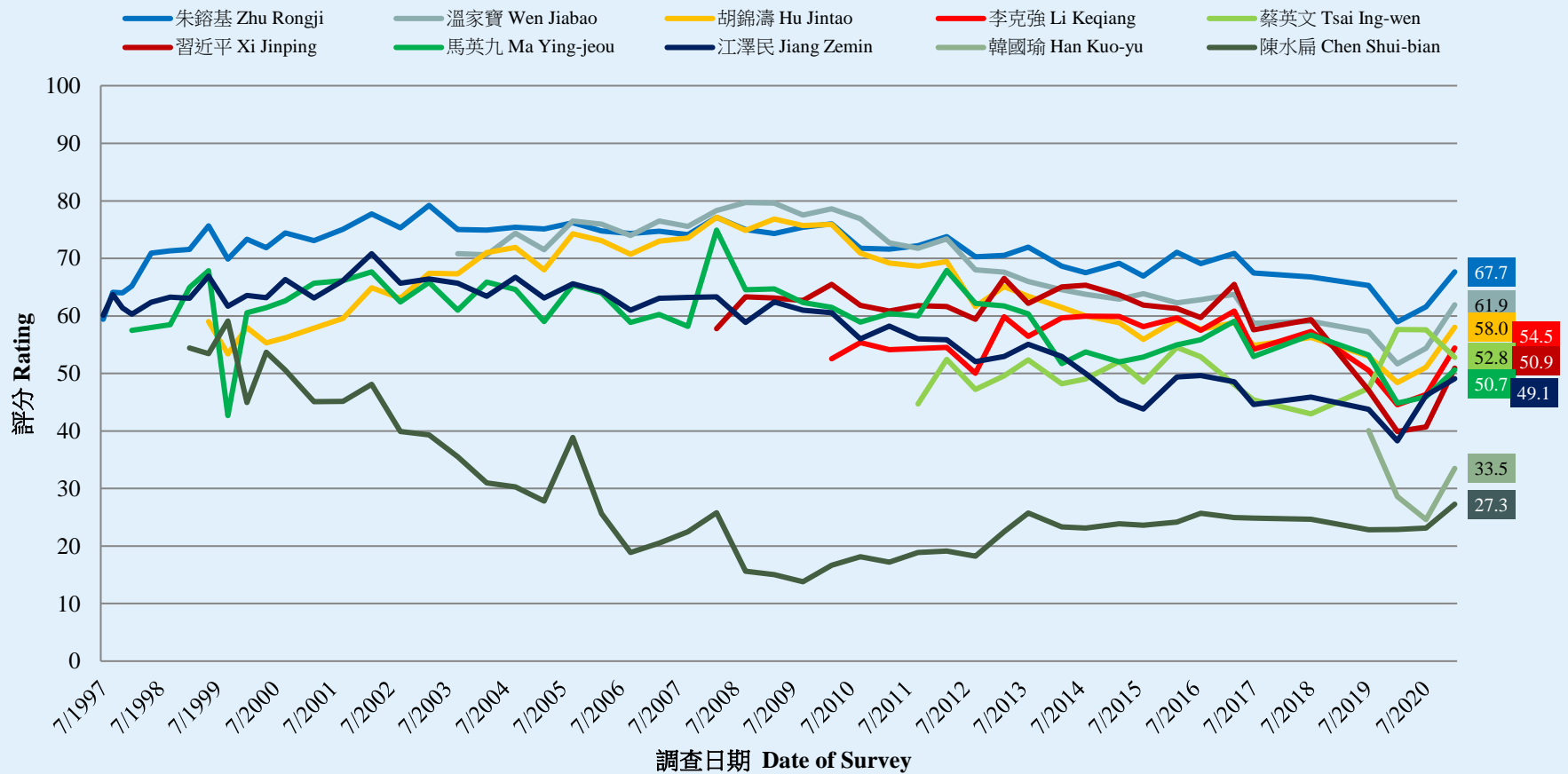
Political figures	Region	22-24/7/2020	18-22/1/2021	Change	Record
Zhu Rongji	China	61.6	67.7	▲6.1 *	Record high since Mar. 2017
Wen Jiabao	China	54.4	61.9	▲7.6 *	Record high since Mar. 2017
Hu Jintao	China	51.1	58.0	▲6.9 *	Record high since Mar. 2017
Li Keqiang	China	46.4	54.5	▲8.1 *	Record high since Jul. 2018
Tsai Ing-wen	Taiwan	57.6	52.8	▼4.8 *	Record low since Jul. 2019
Xi Jinping	China	40.7	50.9	▲10.2 *	Record high since Jul. 2018
Ma Ying-jeou	Taiwan	45.9	50.7	▲4.7 *	Record high since Jul. 2019
Jiang Zemin	China	46.2	49.1	▲2.9	Record high since Aug. 2016
Han Kuo-yu	Taiwan	24.6	33.5	▲8.9 *	Record high since Jul. 2019
Chen Shui-bian	Taiwan	23.1	27.3	▲4.1 *	Record high since Sept. 2005
Wang Qishan	China	--	53.3	--	--
Su Tseng-chang	Taiwan	--	40.2	--	--

* Significant change

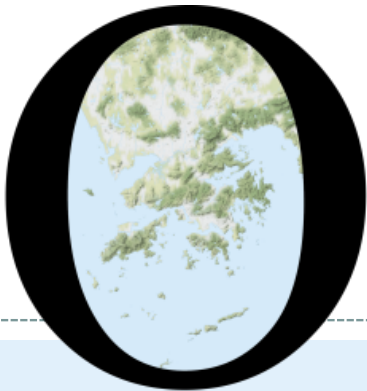
Survey Result - Popularity of Cross-strait Political Figures

6

市民對兩岸政治人物的支持程度 - 綜合圖表 (按次計算)
 Support rating of Cross-strait political figures – Combined (per poll)
 (7/1997 – 1/2021)



POP



HONG KONG PUBLIC OPINION PROGRAM

HONG KONG PUBLIC OPINION RESEARCH INSTITUTE

香港民意研究所 之 香港民意研究計劃

Community Democracy Project - Community Health Module

Post-Epidemic Normality Resumption Index (PENRI)

Latest Results

February 2, 2021

Contact Information - PENRI

8

	HKPOP Panel
Date of survey	January 18, 3pm – February 1, 3pm
Survey method	Online survey
Target population	Hong Kong residents aged 12+
Total sample size	4,394
Response rate	5.0%
Sampling error	Sampling error of percentages at +/-1% at 95% confidence level
Weighting method	The figures are rim-weighted according to 1) gender-age distribution of Hong Kong population and by District Councils population figures from Census and Statistics Department; 2) Voting results of District Councils Election from Registration and Electoral Office; 3) rating distribution of Chief Executive from regular tracking surveys.

Survey Result - PENRI

9

Date of Publication	<u>19/1</u>	<u>20/1</u>	<u>21/1</u>	<u>22/1</u>	<u>23/1</u>	<u>24/1</u>	<u>25/1</u>	<u>26/1</u>	<u>27/1</u>	<u>28/1</u>	<u>29/1</u>	<u>30/1</u>	<u>31/1</u>	<u>1/2</u>	<u>2/2</u>
Imported Cases(Ytd)	5	1	0	7	6	3	4	4	1	3	1	2	2	9	5
Local Infection Cases(Ytd)	102	55	77	63	55	78	72	69	63	57	38	48	26	44	29
Post-Epidemic Gathering Resumption Index (PEGRI)	12.2	16.4	16.6	16.6	16.4	15.7	15.3	15.6	15.0	17.9	17.6	17.7	17.7	17.7	17.7

Survey Result - PENRI

10

