

POP



HONG KONG PUBLIC OPINION PROGRAM

HONG KONG PUBLIC OPINION RESEARCH INSTITUTE

香港民意研究所 之 香港民意研究計劃

Latest Tracking Poll Results

February 23, 2021

Contact Information

2

- Date of survey: 2-5/2/2021
- Survey method: Random telephone survey conducted by real interviewers
- Target population: Cantonese-speaking Hong Kong residents aged 18+
- Sample size: 1,018 (including 514 landline and 504 mobile samples)
- Effective response rate: 62.9%
- Sampling error: Sampling error of ratings not more than +/-2.9 at 95% conf. level
- Weighting method: Rim-weighted according to figures provided by the Census and Statistics Department. The gender-age distribution of the Hong Kong population came from “Mid-year population for 2019”, while the educational attainment (highest level attended) distribution and economic activity status distribution came from “Women and Men in Hong Kong - Key Statistics (2019 Edition)”.

Survey Topic

3

● Social indicators

- **Core indicators**
- Degree of freedom
- Degree of stability
- Degree of prosperity
- Compliance with the rule of law
- Degree of democracy
- **Non-core indicators**
- Degree of public order
- Degree of civilization
- Degree of social welfare sufficiency
- Degree of efficiency
- Degree of corruption-free practices
- Degree of equality
- Degree of fairness

● Freedom indicators

- Freedom of religious belief
- Freedom to enter or leave Hong Kong
- Freedom to engage in artistic and literary creation
- Freedom to engage in academic research
- Freedom of speech
- Freedom of publication
- Freedom of press
- Freedom to strike
- Freedom of association
- Freedom of procession and demonstration

● Rule of law indicators

- Impartiality of the courts
- Fairness of the judicial system
- Support rating of Chief Justice of the Court of Final Appeal

Survey result - Social Indicators

4

• Five Core Social Indicators

	4-8/1/2021	2-5/2/2021	Change	Record
Freedom	4.45	5.02	▲0.57 *	Record high since Apr. 2020
Stability	4.04	4.99	▲0.94 *	Record high since May 2019
Prosperity	4.09	4.96	▲0.87 *	Record high since Jul. 2020
Rule of law	3.80	4.50	▲0.70 *	Record high since May 2019
Democracy	3.56	4.27	▲0.71 *	Record high since Jul. 2020

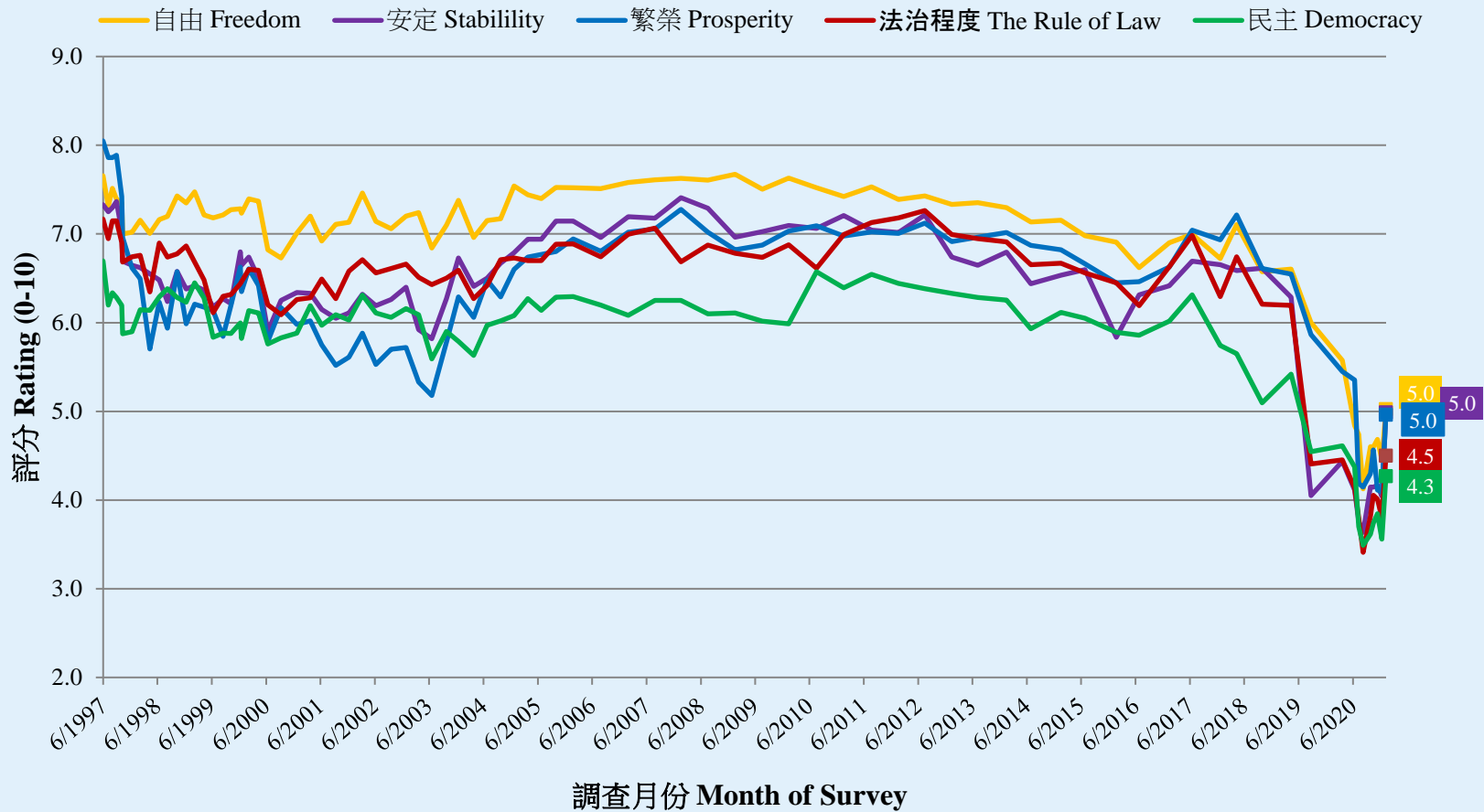
- On a scale of 0 to 10, people's ratings on the five core social indicators ranked from the highest to the lowest are "freedom", "stability", "prosperity", "rule of law" and "democracy". Their scores are 5.02, 4.99, 4.96, 4.50 and 4.27 respectively. Compared with a month ago, all social indicators have increased significantly.

* Significant change

Survey result - Social Indicators

5

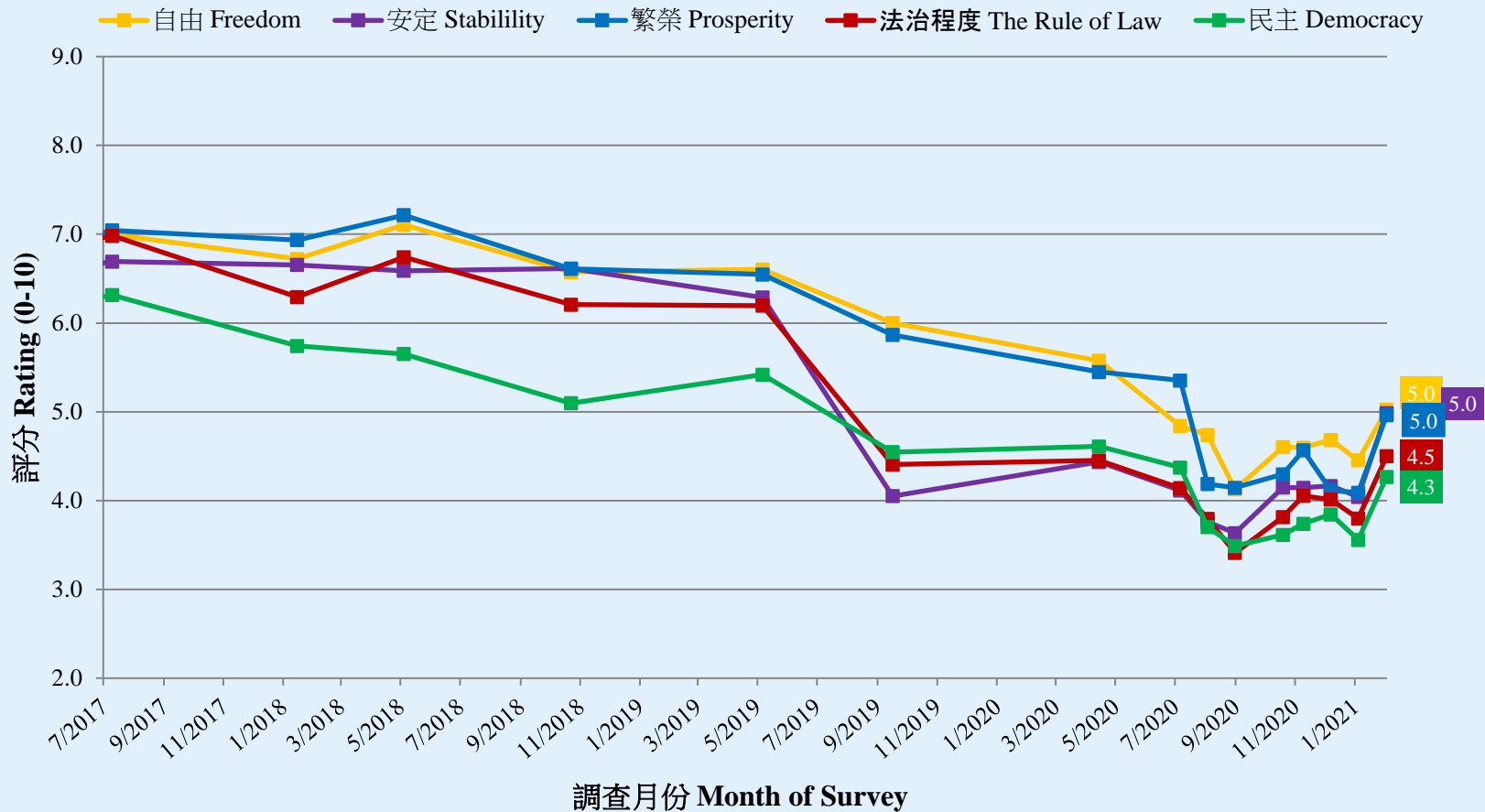
核心社會指標走勢圖表 (按次計算)
Trend of Core Social Indicators Chart (Per Poll)
(6/1997 – 2/2021)



Survey result - Social Indicators

6

核心社會指標走勢圖表 (按次計算)
Trend of Core Social Indicators Chart (Per Poll)
(7/2017 – 2/2021)



Survey result - Social Indicators

7

• Seven Non-Core Social Indicators

	6-9/7/2020	2-5/2/2021	Change	Record
Public Order	5.14	5.70	▲0.56 *	Record high since May 2019
Civilization	5.42	5.58	▲0.16	Record high since Apr. 2020
Social Welfare Sufficiency	5.63	5.43	▼0.20	All-time record low since Jul. 1997
Efficiency	5.34	5.08	▼0.26	All-time record low since Jun. 1997
Corruption-Free Practices	4.98	5.00	▲0.02	Record high since Sept. 2019
Equality	4.62	4.50	▼0.13	All-time record low since Jun. 1997
Fairness	4.15	4.23	▲0.08	Record high since Apr. 2020

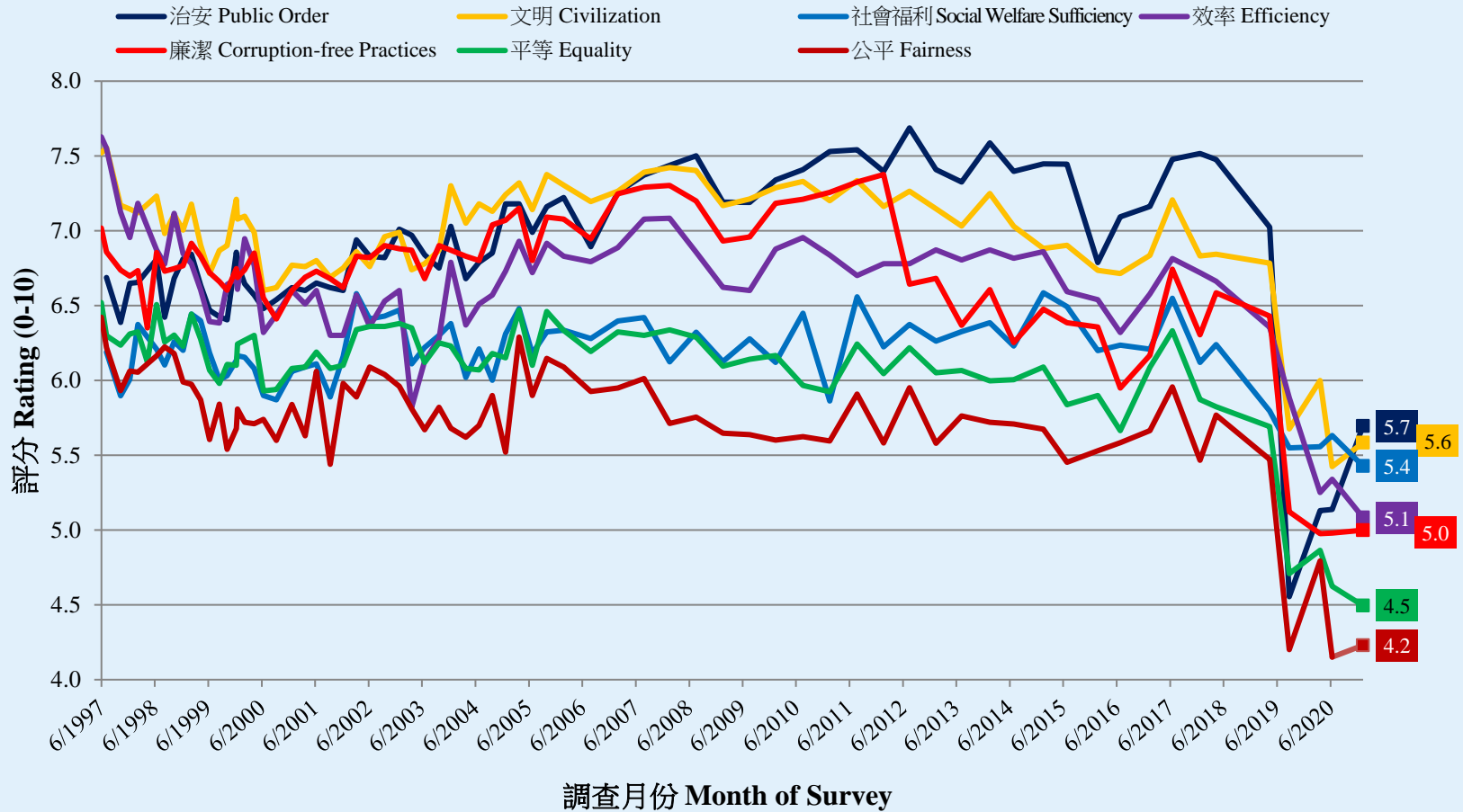
- Compared with the previous survey, rating of “public order” has increased significantly, while ratings of “social welfare sufficiency”, “efficiency” and “equality” have all registered **all-time lows** since records began in 1997.

* Significant change

Survey result - Social Indicators

8

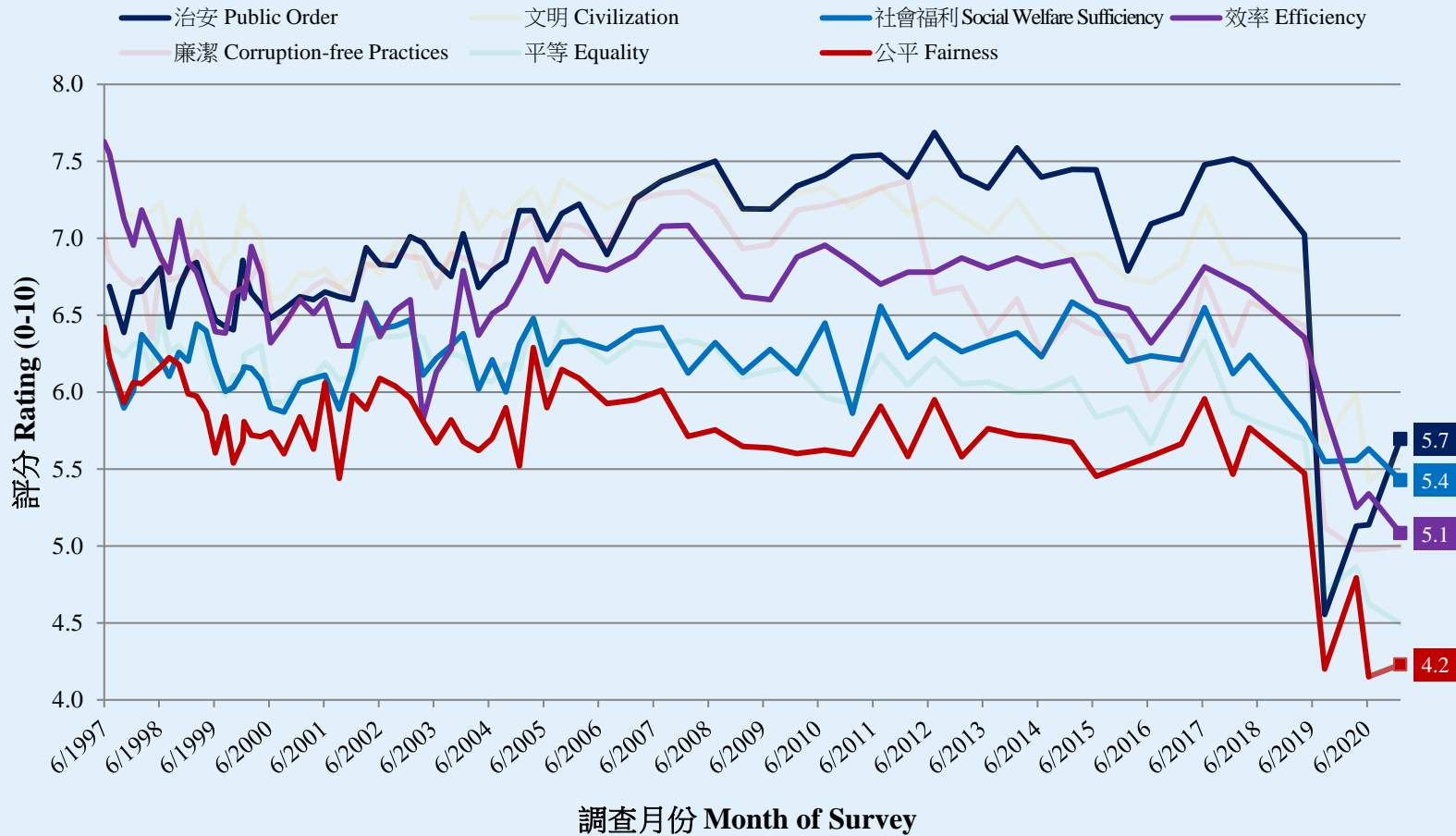
非核心社會指標走勢圖表 (按次計算)
Trend of Non-Core Social Indicators Chart (Per Poll)
(6/1997 – 2/2021)



Survey result - Social Indicators

9

非核心社會指標走勢圖表 (按次計算)
Trend of Non-Core Social Indicators Chart (Per Poll)
(6/1997 – 2/2021)



Survey Topic

10

● Social indicators

- **Core indicators**
- Degree of freedom
- Degree of stability
- Degree of prosperity
- Compliance with the rule of law
- Degree of democracy
- **Non-core indicators**
- Degree of public order
- Degree of civilization
- Degree of social welfare sufficiency
- Degree of efficiency
- Degree of corruption-free practices
- Degree of equality
- Degree of fairness

● Freedom indicators

- Freedom of religious belief
- Freedom to enter or leave Hong Kong
- Freedom to engage in artistic and literary creation
- Freedom to engage in academic research
- Freedom of speech
- Freedom of publication
- Freedom of press
- Freedom to strike
- Freedom of association
- Freedom of procession and demonstration

● Rule of law indicators

- Impartiality of the courts
- Fairness of the judicial system
- Support rating of Chief Justice of the Court of Final Appeal

Survey Result – Freedom Indicators

11

• Ten Freedom Sub-Indicators

	6-9/7/2020	2-5/2/2021	Change	Record
Degree of freedom (repeated listing)	4.84	5.02	▲0.18	Record high since Apr. 2020
Freedom of religious belief	6.71	6.76	▲0.05	Record high since Apr. 2020
Freedom to enter or leave Hong Kong	6.50	6.08	▼0.42 *	All-time record low since Aug. 1997
Freedom to engage in artistic and literary creation	4.96	5.21	▲0.25	Record high since Apr. 2020
Freedom to engage in academic research	4.98	4.88	▼0.10	All-time record low since Aug. 1997
Freedom of speech	4.39	4.63	▲0.24	Record high since Apr. 2020
Freedom of publication	4.40	4.57	▲0.16	Record high since Apr. 2020
Freedom of press	4.27	4.38	▲0.11	Record high since Apr. 2020
Freedom to strike	4.08	4.34	▲0.26	Record high since Apr. 2020
Freedom of association	4.35	4.17	▼0.17	All-time record low since Aug. 1997
Freedom of procession and demonstration	3.31	3.31	--	--

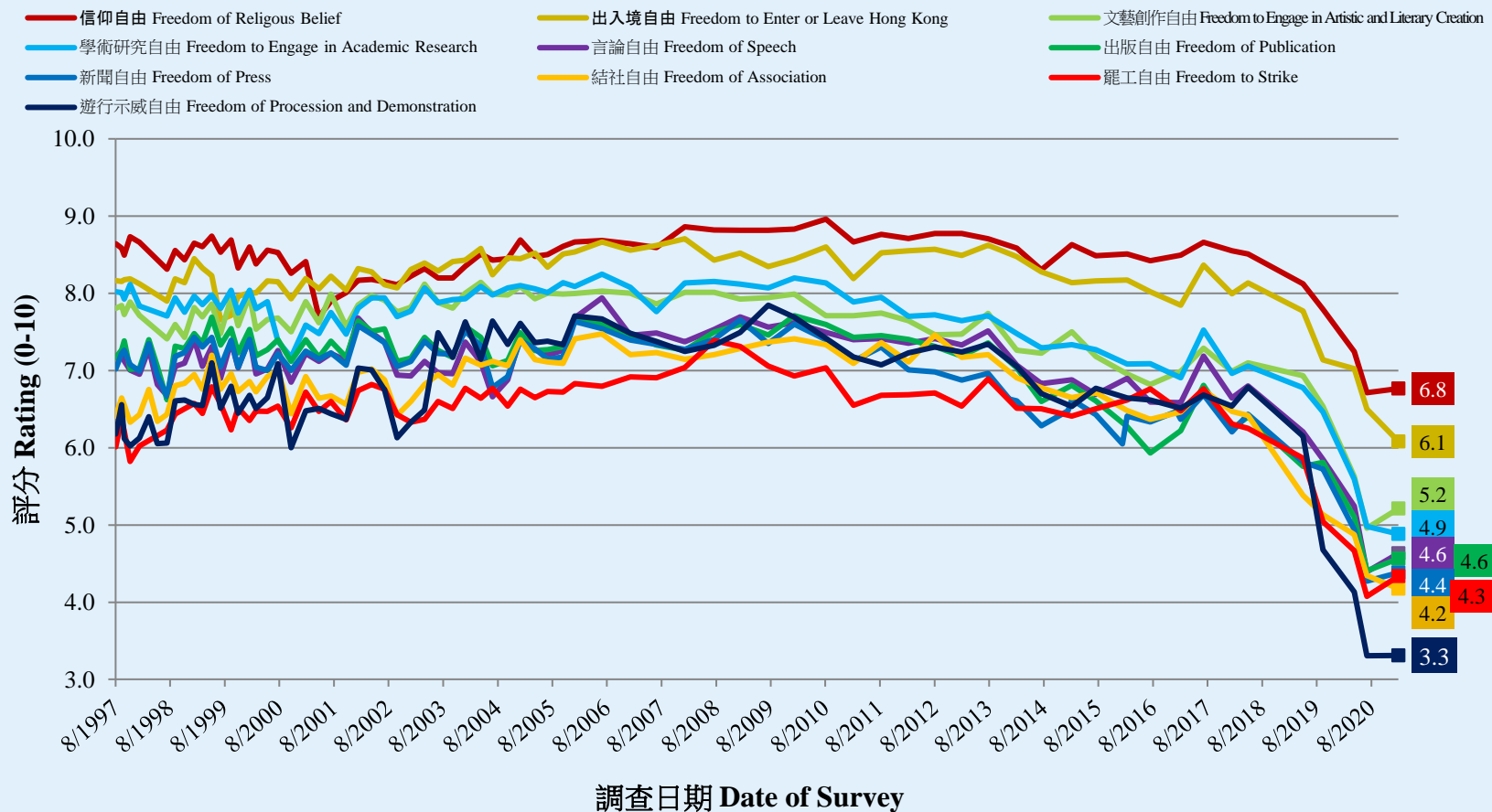
- Compared with the previous survey, freedom of “entering or leaving Hong Kong” has dropped significantly, while freedoms of “entering or leaving Hong Kong”, “academic research” and “association” have registered **all-time lows** since records began in 1997.

* **Significant change**

Survey Result – Freedom Indicators

12

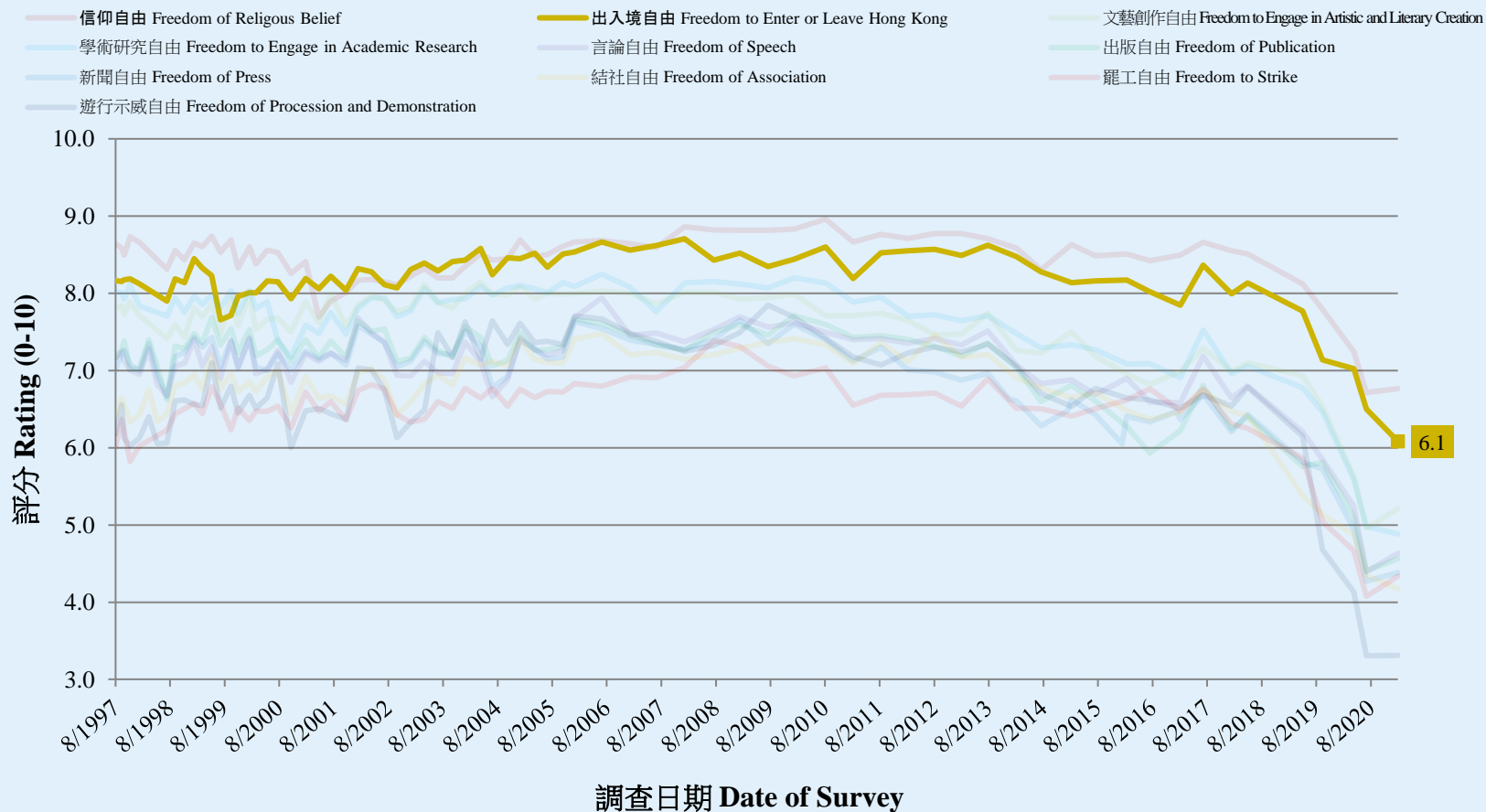
自由指標走勢圖表 (按次計算)
Trend of Freedom Indicators Chart (Per Poll)
(8/1997 – 2/2021)



Survey Result – Freedom Indicators

13

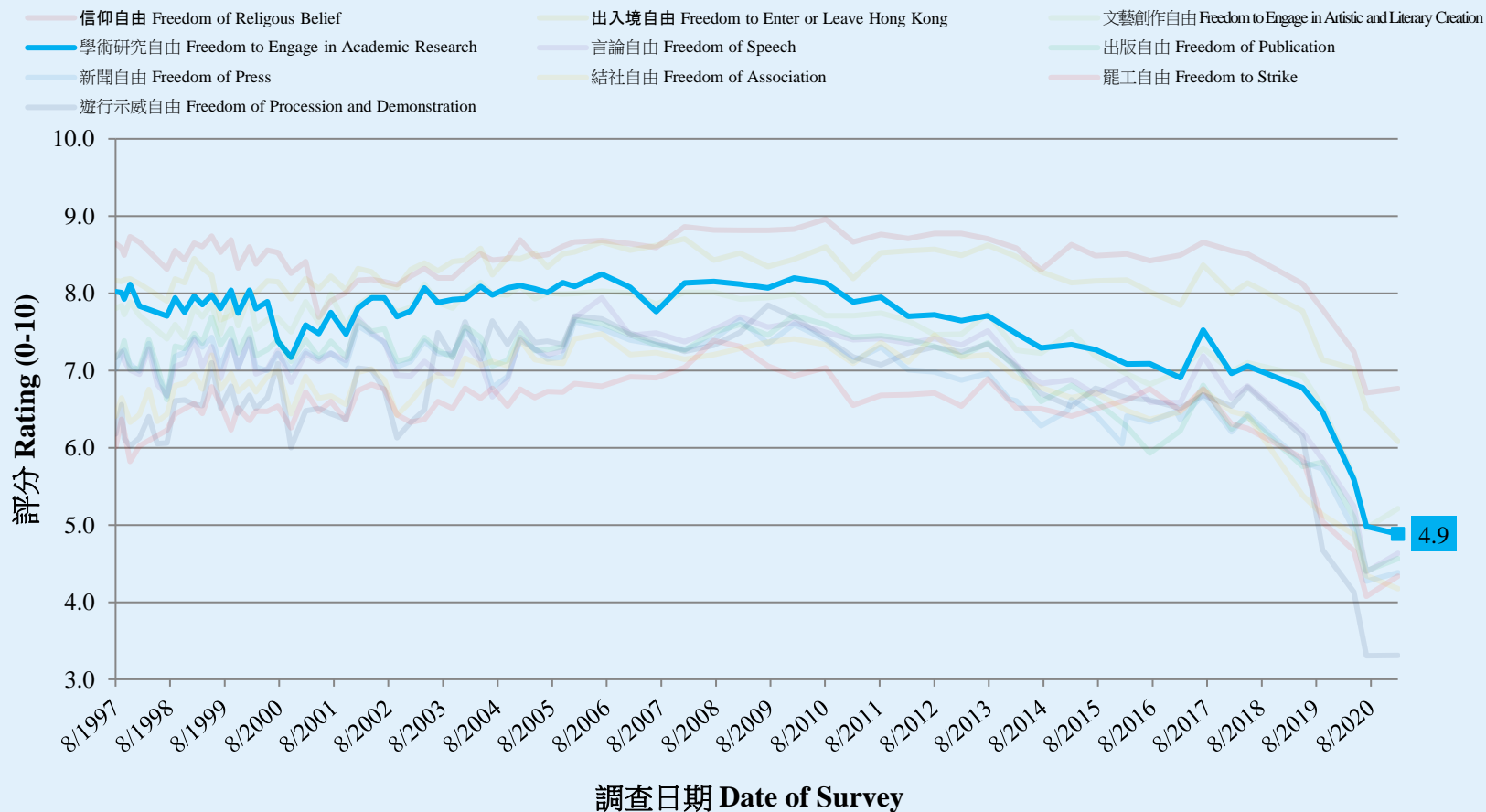
自由指標走勢圖表 (按次計算)
Trend of Freedom Indicators Chart (Per Poll)
(6/1997 – 2/2021)



Survey Result – Freedom Indicators

14

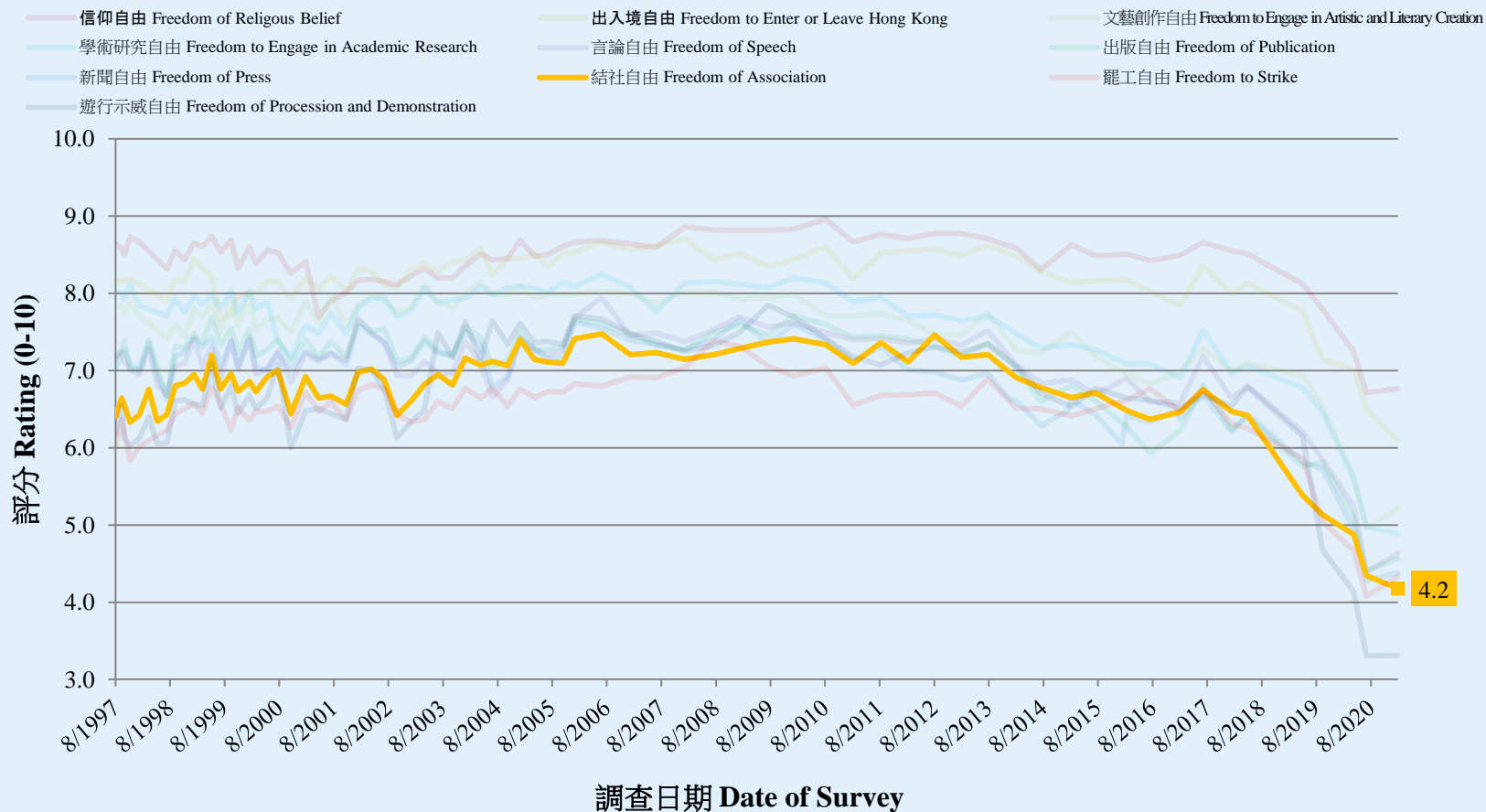
自由指標走勢圖表 (按次計算)
Trend of Freedom Indicators Chart (Per Poll)
(6/1997 – 2/2021)



Survey Result – Freedom Indicators

15

自由指標走勢圖表 (按次計算)
Trend of Freedom Indicators Chart (Per Poll)
(6/1997 – 2/2021)



Survey Topic

17

● Social indicators

- **Core indicators**
- Degree of freedom
- Degree of stability
- Degree of prosperity
- Compliance with the rule of law
- Degree of democracy
- **Non-core indicators**
- Degree of public order
- Degree of civilization
- Degree of social welfare sufficiency
- Degree of efficiency
- Degree of corruption-free practices
- Degree of equality
- Degree of fairness

● Freedom indicators

- Freedom of religious belief
- Freedom to enter or leave Hong Kong
- Freedom to engage in artistic and literary creation
- Freedom to engage in academic research
- Freedom of speech
- Freedom of publication
- Freedom of press
- Freedom to strike
- Freedom of association
- Freedom of procession and demonstration

● Rule of law indicators

- Impartiality of the courts
- Fairness of the judicial system
- Support rating of Chief Justice of the Court of Final Appeal

Survey Result – Rule of law Indicators

18

- **Two Rule of law Sub-indicators and the Rating of the Chief Justice**

	6-9/7/2020	2-5/2/2021	Change	Record
Compliance with the rule of law (repeated listing)	4.14	4.50	▲0.36 *	Record high since May 2019
Impartiality of the courts	4.24	4.42	▲0.17	Record high since Apr. 2020
Fairness of the judicial system	4.07	4.27	▲0.20	Record high since Apr. 2020
Support rating of Chief Justice of the CFA	57.5	42.5	▼14.6 *	All-time record low since Jan. 2001

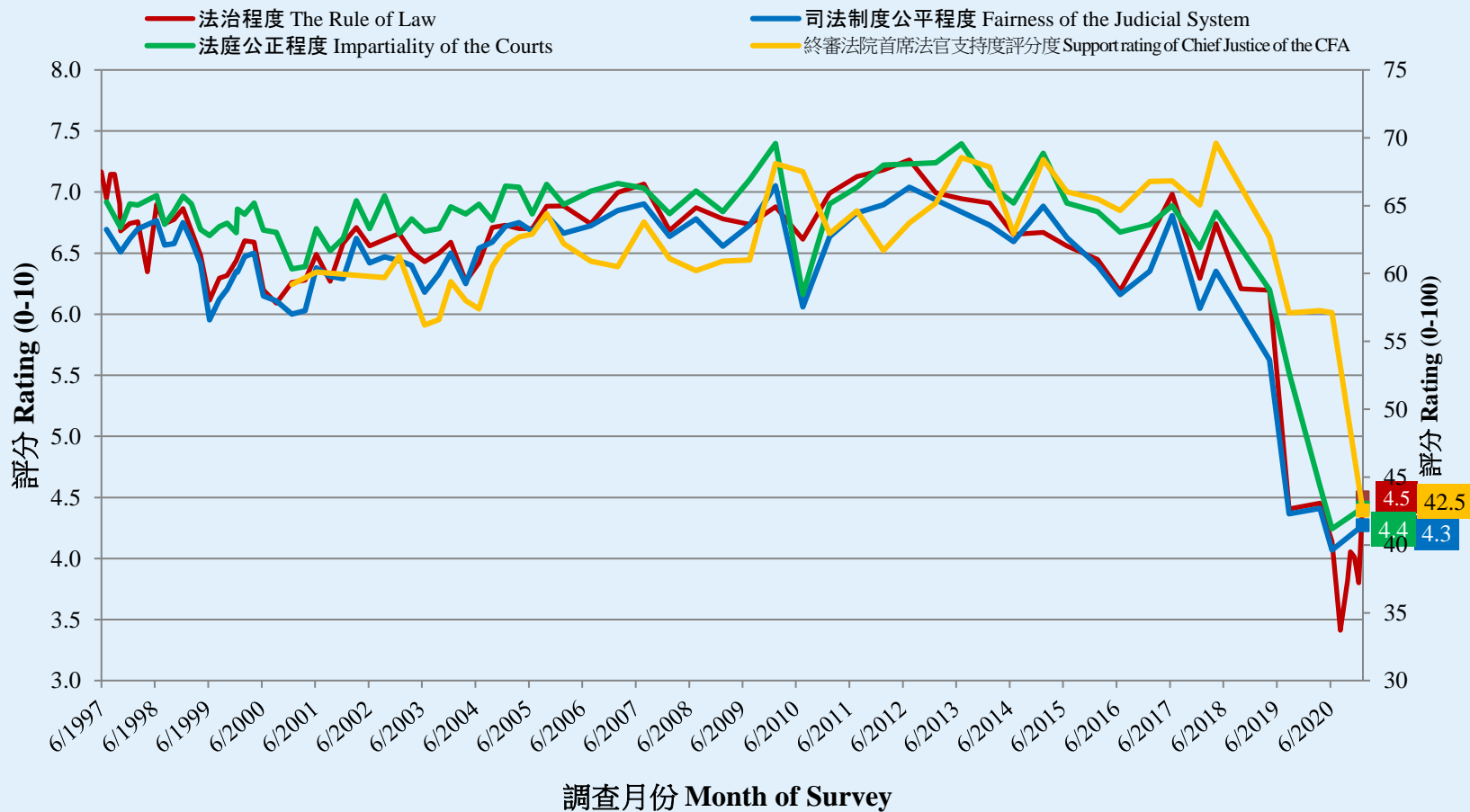
- As for the two rule of law sub-indicators, “impartiality of the courts” got 4.42 marks, while “fairness of the judicial system” got 4.27 marks. As for Chief Justice Andrew Cheung, his support rating is 42.5 on a scale of 0 to 100, which is significantly lower than the last rating of Geoffrey Ma before he stepped down, also representing an **all-time low** since record began in 2001.

* Significant change

Survey Result – Rule of law Indicators

19

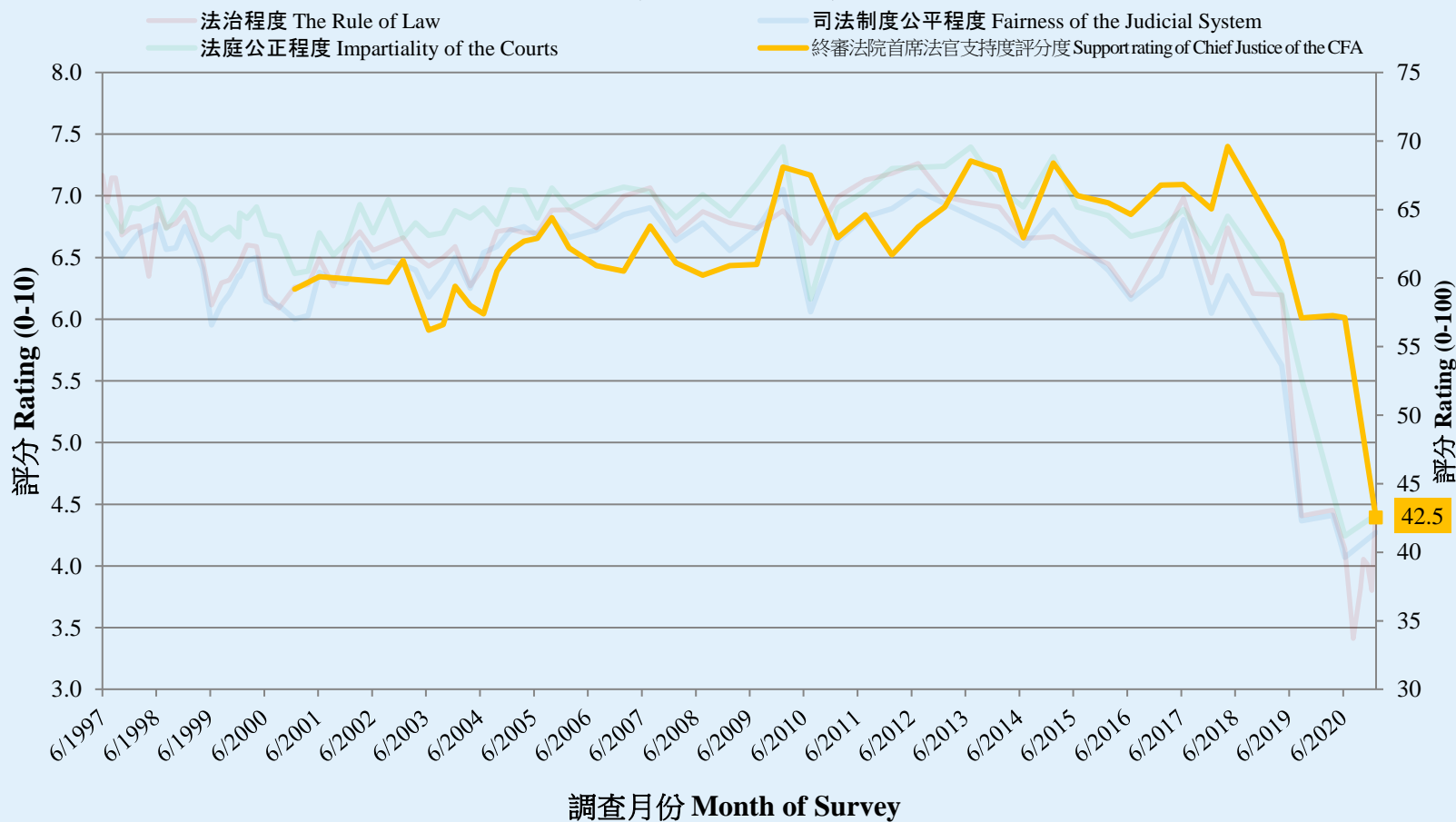
法治指標走勢圖表 (按次計算)
Trend of Rule of Law Indicators Chart (Per Poll)
(6/1997 – 2/2021)



Survey Result – Rule of law Indicators

20

法治指標走勢圖表 (按次計算)
Trend of Rule of Law Indicators Chart (Per Poll)
(6/1997 – 2/2021)



POP



HONG KONG PUBLIC OPINION PROGRAM

HONG KONG PUBLIC OPINION RESEARCH INSTITUTE

香港民意研究所 之 香港民意研究計劃

Community Democracy Project -

Community Health Module

Latest Results

February 23, 2021

Contact Information - Community Health Module

22

	HKPOP Panel	
Date of survey	January 25, 3pm – February 22, 3pm	
Survey method	Online survey	
Target population	Hong Kong residents aged 12+	
	Representative Panel	Volunteer Panel
Total sample size	816	7,215
Response rate	9.2%	8.3%
Sampling error	Sampling error of percentages at +/-3% at 95% confidence level	Sampling error of percentages at +/-1% at 95% confidence level
Weighting method	The figures are rim-weighted according to 1) gender-age distribution of Hong Kong population and by District Councils population figures from Census and Statistics Department; 2) Voting results of District Councils Election from Registration and Electoral Office; 3) rating distribution of Chief Executive from regular tracking surveys.	

Survey Result - Community Health Module

23

- **Latest survey period: 25/1-22/2/2021**
- **Last survey period: 18-25/1/2021** (*Representative Panel N= 544 Volunteer Panel N= 4,267*)
- **Second last survey period: 8-18/1/2021** (*Representative Panel N= 481 Volunteer Panel N= 4,746*)

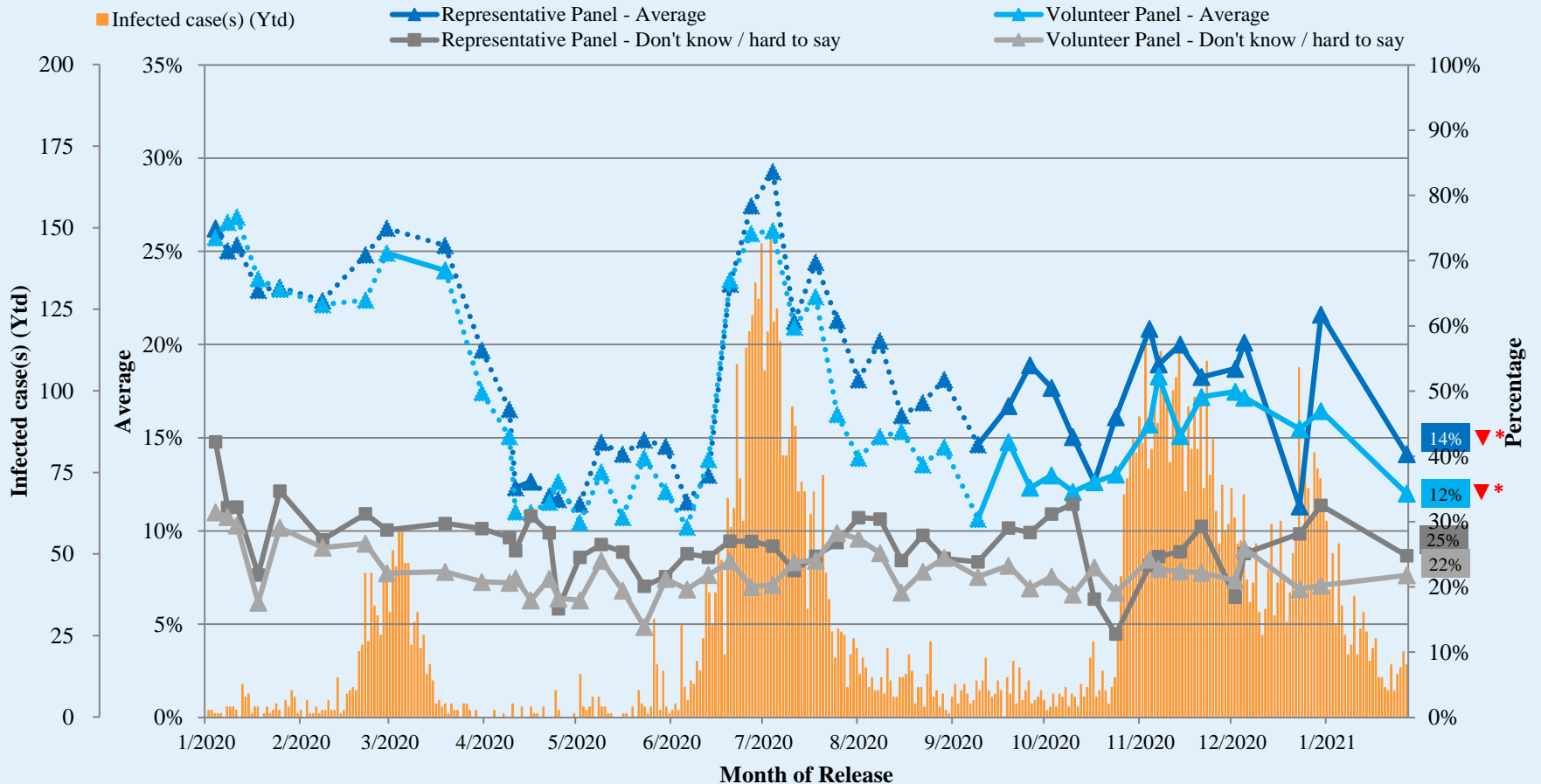
Opinion Question [^]		Representative Panel (N=816)		Volunteer Panel (N=7,205)	
		Don't know / hard to say	Average	Don't know / hard to say	Average
Q1 How likely do you think it is that you will contract novel coronavirus pneumonia over the next one month? [Logarithmic Scale]	Latest	25%	14% ▼*	22%	12% ▼*
	Last	33%	22%	20%	16%
	Second Last	28%	11%	20%	15%

[^] Answer options included: 0-10 rating scale, others and don't know / hard to say. Answer options changed from linear scale to logarithmic scale since Oct 2020.

* **Significant change**

Survey Result - Community Health Module

Assessment of the public's expected chance of COVID-19 infection



^ Answer options included: 0-10 rating scale, others and don't know / hard to say. Answer options changed from linear scale to logarithmic scale since Oct 2020.

* Significant change

Survey Result - Community Health Module

26

- **Latest survey period: 25/1-22/2/2021**
- **Last survey period: 18-25/1/2021** (*Representative Panel N=543 Volunteer Panel N=4,274*)
- **Second last survey period: 8-18/1/2021** (*Representative Panel N=479 Volunteer Panel N=4,749*)

Opinion Question [^]		Representative Panel (N=814)				Volunteer Panel (N=7,203)			
		Satisfied	Half-half	Dissatisfied	Mean [†]	Satisfied	Half-half	Dissatisfied	Mean [†]
Q2 How satisfied or dissatisfied are you with the government's performance in handling novel coronavirus pneumonia?	Latest	25% ▲*	17% ▲*	58% ▼*	2.3 ▲*	22% ▲*	10% ▼*	67% ▼*	2.1 ▲*
	Last	16%	12%	71%	2.0	12%	11%	76%	1.8
	Second Last	17%	28%	55%	2.2	18%	10%	72%	1.9

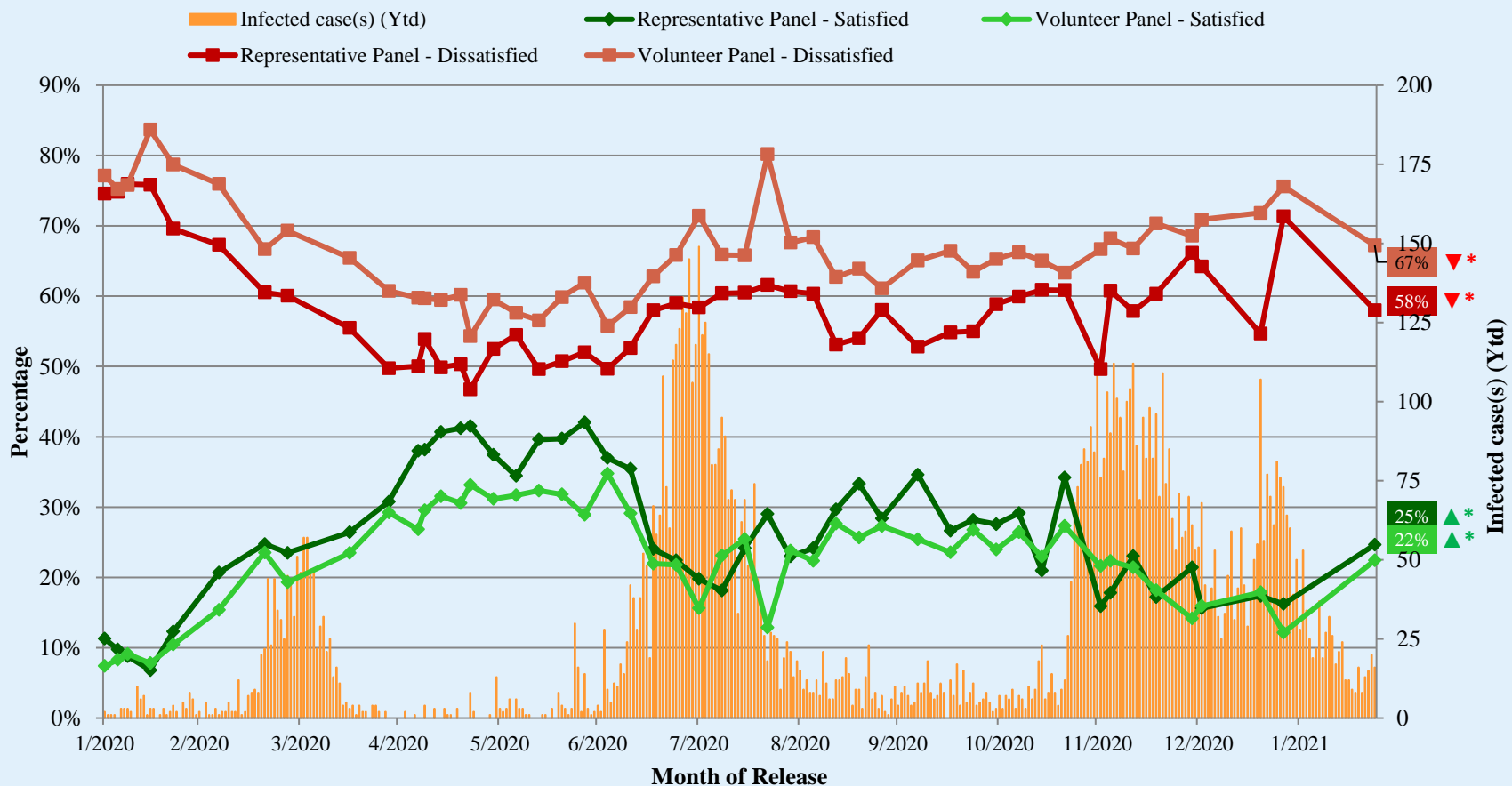
[^] Answer options included: very much satisfied, somewhat satisfied, half-half, somewhat dissatisfied, very much dissatisfied and don't know / hard to say

[†] The mean value is calculated by quantifying all individual responses into 1, 2, 3, 4, 5 marks according to their degree of positive level, where 1 is the lowest and 5 the highest, and then calculate the sample mean.

* Significant change

Survey Result - Community Health Module

Appraisal of HK Government's performance in handling novel coronavirus pneumonia



^ Answer options included: very much satisfied, somewhat satisfied, half-half, somewhat dissatisfied, very much dissatisfied and don't know / hard to say * Significant change

POP



HONG KONG PUBLIC OPINION PROGRAM

HONG KONG PUBLIC OPINION RESEARCH INSTITUTE

香港民意研究所 之 香港民意研究計劃

Community Democracy Project - Community Health Module

Post-Epidemic Normality Resumption Index (PENRI)

Latest Results

February 23, 2021

Contact Information - PENRI

29

	HKPOP Panel
Date of survey	January 8, 3pm – February 22, 3pm
Survey method	Online survey
Target population	Hong Kong residents aged 12+
Total sample size	6,721
Response rate	7.0%
Sampling error	Sampling error of percentages at +/-1% at 95% confidence level
Weighting method	The figures are rim-weighted according to 1) gender-age distribution of Hong Kong population and by District Councils population figures from Census and Statistics Department; 2) Voting results of District Councils Election from Registration and Electoral Office; 3) rating distribution of Chief Executive from regular tracking surveys.

Survey Result - PENRI

30

Date of Publication	<u>9/2</u>	<u>10/2</u>	<u>11/2</u>	<u>12/2</u>	<u>13/2</u>	<u>14/2</u>	<u>15/2</u>	<u>16/2</u>	<u>17/2</u>	<u>18/2</u>	<u>19/2</u>	<u>20/2</u>	<u>21/2</u>	<u>22/2</u>	<u>23/2</u>
Imported Cases(Ytd)	4	5	0	4	6	2	2	5	2	4	0	1	5	1	3
Local Infection Cases(Ytd)	28	21	17	17	18	10	10	4	6	12	8	12	10	19	13
Post-Epidemic Gathering Resumption Index (PEGRI)	15.1	21.6	22.3	22.5	22.5	22.4	22.6	44.8	45.3	22.9	44.9	18.1	17.9	17.9	16.1

Survey Result - PENRI

31

