

POP



HONG KONG PUBLIC OPINION PROGRAM

HONG KONG PUBLIC OPINION RESEARCH INSTITUTE

香港民意研究所 之 香港民意研究計劃

限聚指數

Group Gathering Prohibition Index

5/5/2021

樣本資料 - 限聚指數基準調查

Contact Information - Group Gathering Prohibition Index Benchmark Survey

2

	香港民研意見群組成員 HKPOP Panel
調查日期 Survey date	16/4 15:00 – 21/4 15:00
調查方法 Survey method	以電郵接觸群組成員，並於網上完成調查 Online survey
訪問對象 Target population	十二歲或以上的香港市民 Hong Kong residents aged 12+
總成功樣本 Total sample size	6,330
回應比率 Response rate	6.7%
抽樣誤差 Sampling error	95% 置信水平，百分比誤差 $\pm 1\%$ Sampling error of percentages at $\pm 1\%$ at 95% confidence level
加權方法 Weighting method	按照1) 政府統計處提供的全港人口年齡及性別分佈統計數字、各區議會人口數字；2) 選舉事務處提供的區議會選舉結果；3) 常規調查中的特首評分分佈數字，以「反覆多重加權法」作出調整。 The figures are rim-weighted according to 1) gender-age distribution of Hong Kong population and by District Councils population figures from Census and Statistics Department; 2) Voting results of District Councils Election from Registration and Electoral Office; 3) rating distribution of Chief Executive from regular tracking surveys.

限聚指數

Group Gathering Prohibition Index

3

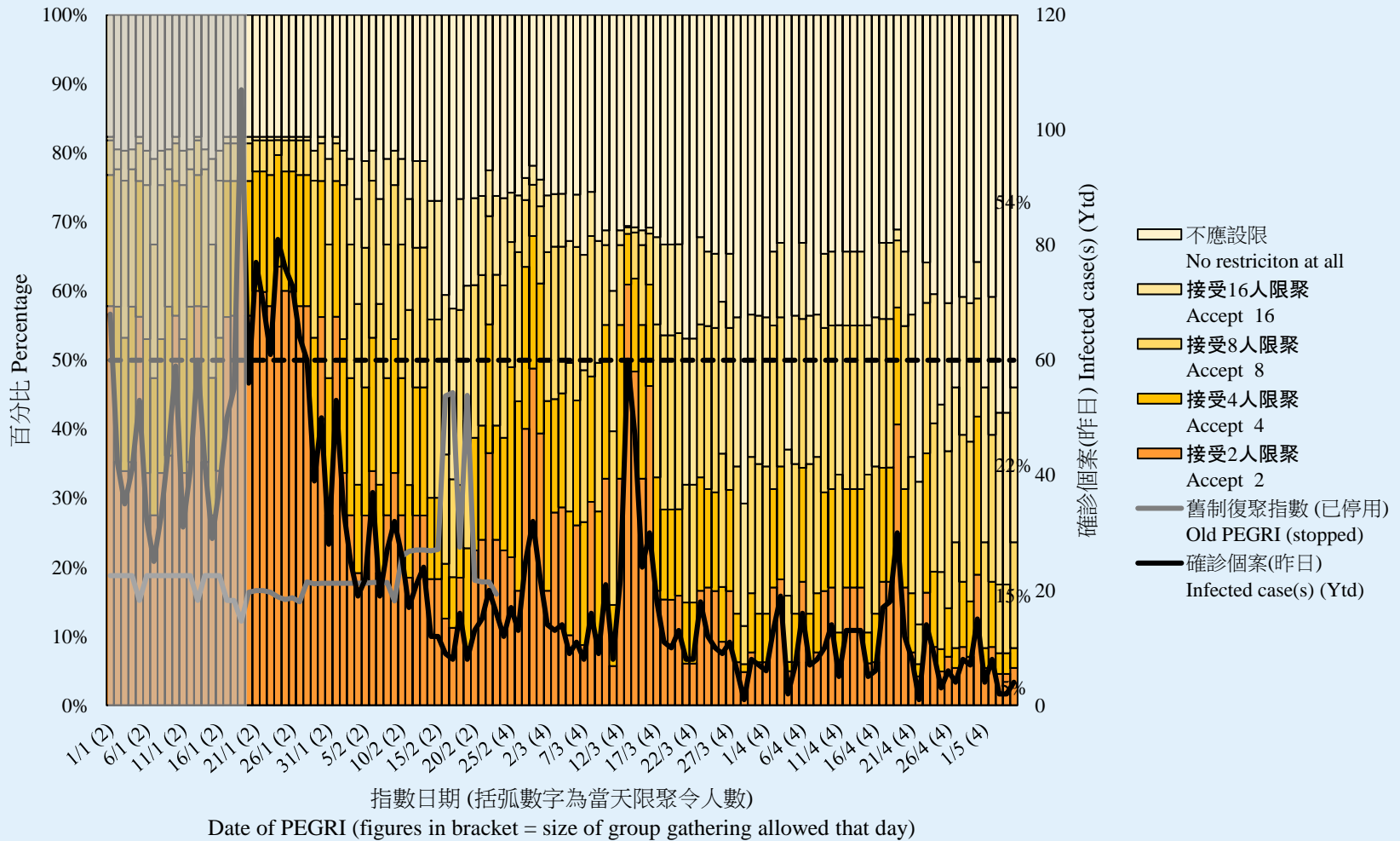
- 最新調查日期 **Latest survey date: 16-21/4/2021 (N=6,330)**
- 上次調查日期 **Last survey date: 22-29/3/2021 (N=6,806)**
- 上上次調查日期 **Second last survey date: 8-22/3/2021 (N=6,210)**

意見題目	Opinion Questions
<p>你認為香港應否無條件全面撤銷「限聚令」？</p> <ul style="list-style-type: none">▪ 應該無條件撤銷「限聚令」▪ 不應該，應視乎疫情而定▪ 不知道／很難說 <p>[追問沒有選擇應該“無條件撤銷「限聚令」”者] 你認為每天新增確診個案數應是多少，才適合將「限聚令」訂於2人？ 你認為每天新增確診個案數應是多少，才適合將「限聚令」訂於4人？ 你認為每天新增確診個案數應是多少，才適合將「限聚令」訂於8人？ 你認為每天新增確診個案數應是多少，才適合將「限聚令」訂於16人？</p> <p>請於以下欄位列舉你認為合適的 [個案數 及 限聚人數] 組合……</p>	<p>Do you think the regulation prohibiting gatherings of more than a specific number of people in public places should be completely lifted unconditionally in Hong Kong?</p> <ul style="list-style-type: none">▪ Yes, the ban should be lifted unconditionally▪ No, it should depend on the epidemic situation▪ Don't know / hard to say <p>[For respondents NOT answering “Yes, the ban should be lifted unconditionally”] How many newly confirmed cases each day should there be before it would be appropriate to prohibit gatherings of more than 2 people? How many newly confirmed cases each day should there be before it would be appropriate to prohibit gatherings of more than 4 people? How many newly confirmed cases each day should there be before it would be appropriate to prohibit gatherings of more than 8 people? How many newly confirmed cases each day should there be before it would be appropriate to prohibit gatherings of more than 16 people?</p> <p>Please list combinations of [number of cases & number of people allowed in gatherings] that you think is appropriate in the field below:</p>

調查結果 - 限聚接受程度

Survey Result - Group Gathering Prohibition Acceptance Level

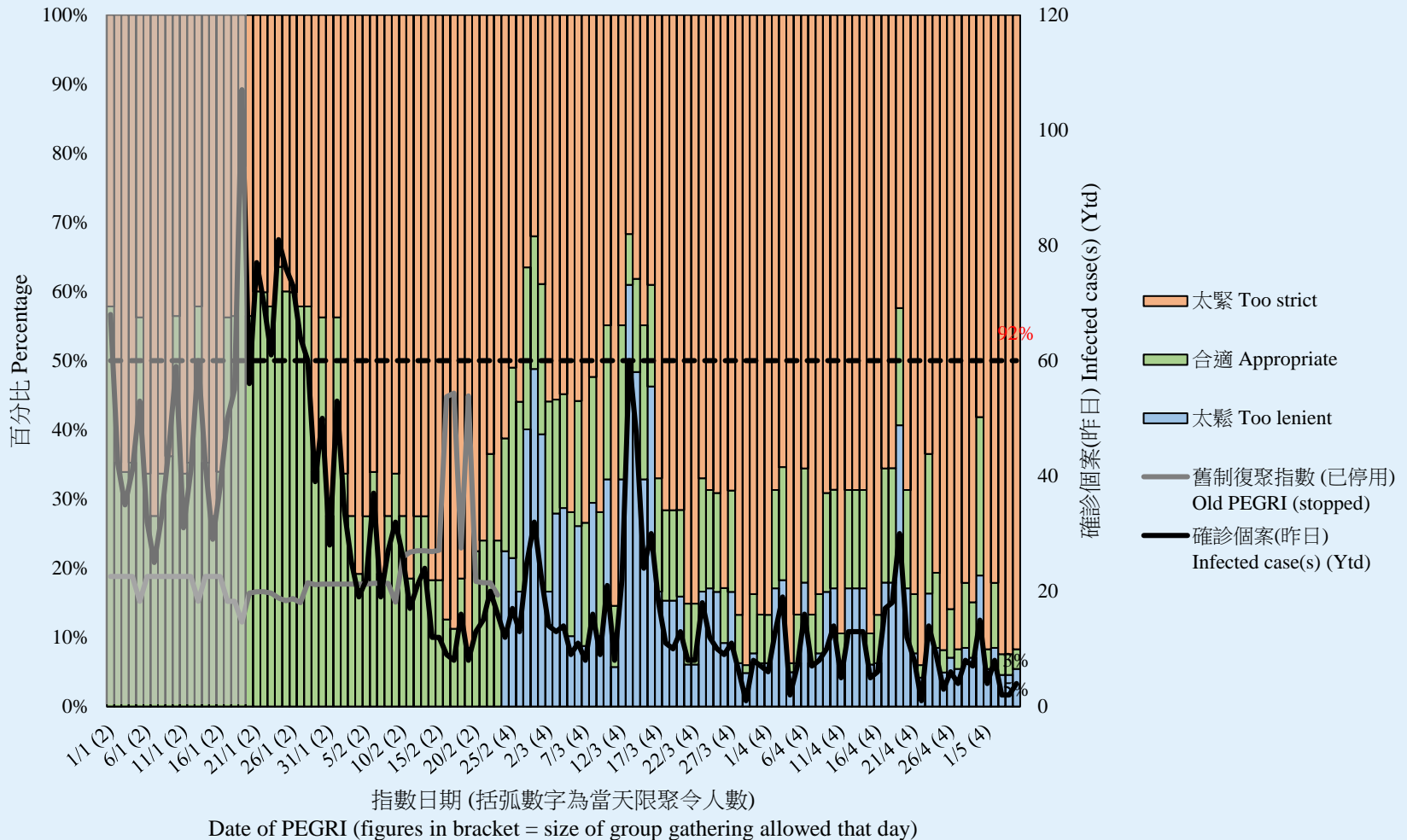
限聚接受程度 Group Gathering Prohibition Acceptance Level



調查結果 - 限聚接受程度

Survey Result – Group Gathering Prohibition Acceptance Level

限聚接受程度 Group Gathering Prohibition Acceptance Level

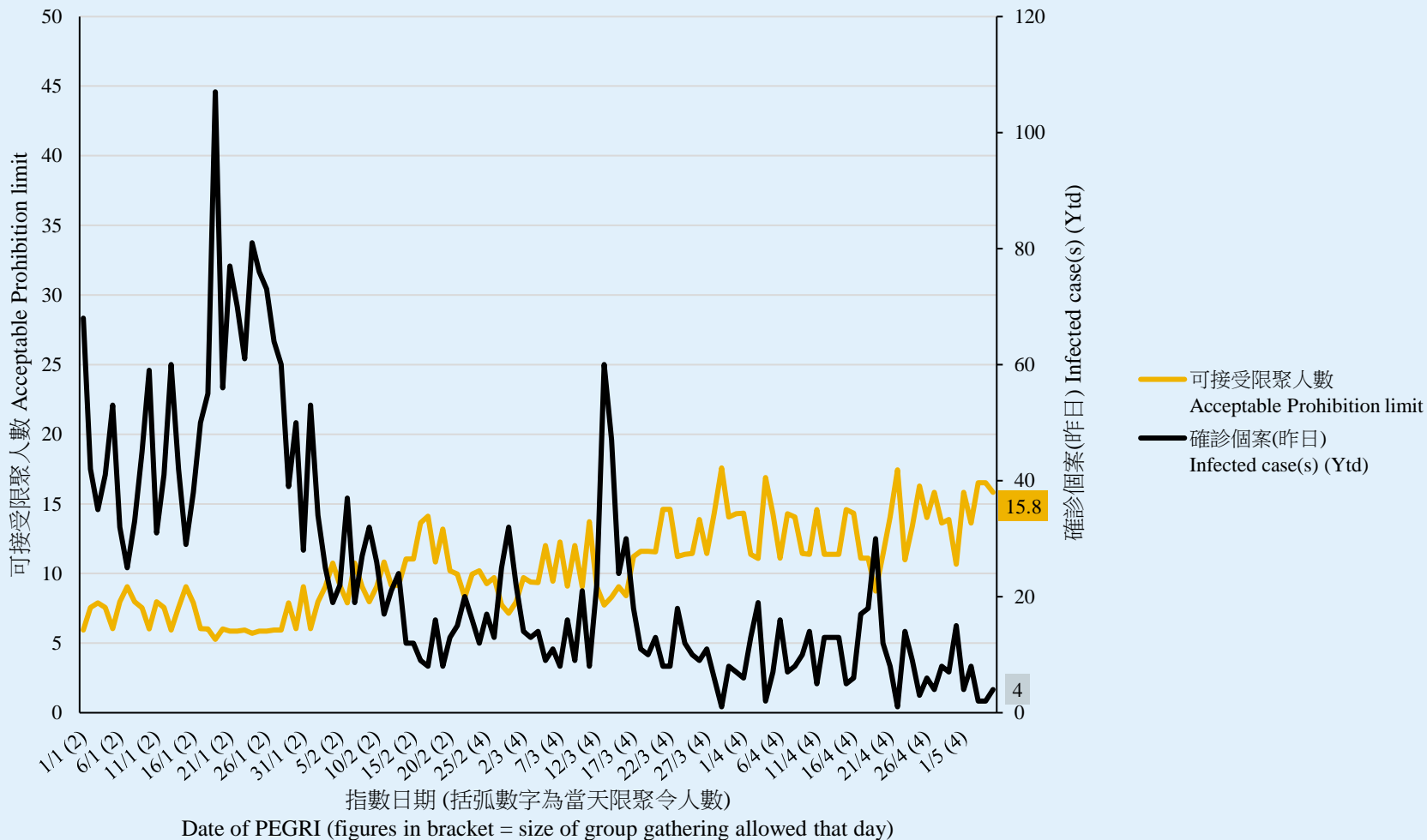


調查結果 - 限聚指數

Survey Result – Group Gathering Prohibition Index

6

限聚指數 Group Gathering Prohibition Index



限聚指數 – 分析評論

Group Gathering Prohibition Index – Commentary

香港教育中心商會副主席任偉豪指出，「雖然政府在上星期放寬了防疫措施，但認為防疫措施太緊的市民依然連續多日佔極大部分，可見防疫措施的放寬程度並未能達到市民的期望。我建議政府於短時間內進一步放寬防疫措施，特別是放寬中小學、幼稚園及補習學校的學生人數比例，由三分二增加到全數學生都可以回校上課，但可先維持半天上課。這將有助追回學生在臨近學期完結前的學習進度，也可減輕家長和教師的壓力。」

Vice Chairman of The Hong Kong Chamber of Education Centres Yam Wai Ho observed, “Although the government has relaxed the epidemic prevention measures last week, a vast number of citizens still considered the epidemic prevention measures too tight. This shows that the relaxation of the epidemic prevention measures has not met the expectations of the public. I suggest the government further relaxes the epidemic prevention measures within a short period of time, especially to relax the proportion of students in primary and secondary schools, kindergartens and tutorial schools from two-thirds to full capacity, but just attending half-day school to begin with. This can help the students recover their learning progress towards the end of the semester, while also reducing the pressure on parents and teachers.”