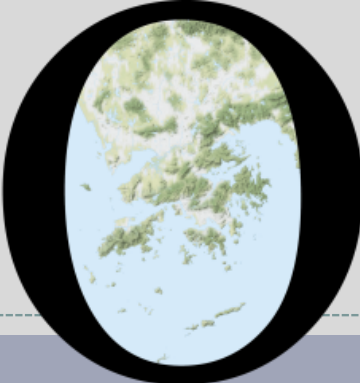


POP



HONG KONG PUBLIC OPINION PROGRAM

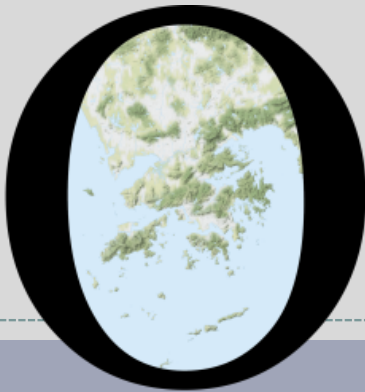
HONG KONG PUBLIC OPINION RESEARCH INSTITUTE

香港民意研究所 之 香港民意研究計劃

Latest Tracking Poll Results

June 8, 2021

POP



HONG KONG PUBLIC OPINION PROGRAM

HONG KONG PUBLIC OPINION RESEARCH INSTITUTE

香港民意研究所 之 香港民意研究計劃

限聚指數

Group Gathering Prohibition Index

8/6/2021

樣本資料 - 限聚指數基準調查

Contact Information - Group Gathering Prohibition Index Benchmark Survey

3

	香港民研意見群組成員 HKPOP Panel
調查日期 Survey date	17/5 15:00 – 24/5 15:00
調查方法 Survey method	以電郵接觸群組成員，並於網上完成調查 Online survey
訪問對象 Target population	十二歲或以上的香港市民 Hong Kong residents aged 12+
總成功樣本 Total sample size	6,583
回應比率 Response rate	7.0%
抽樣誤差 Sampling error	95% 置信水平，百分比誤差 +/-1% Sampling error of percentages at +/-1% at 95% confidence level
加權方法 Weighting method	按照1) 政府統計處提供的全港人口年齡及性別分佈統計數字、各區議會人口數字； 2) 選舉事務處提供的區議會選舉結果；3) 常規調查中的特首評分分佈數字，以 「反覆多重加權法」作出調整。 The figures are rim-weighted according to 1) gender-age distribution of Hong Kong population and by District Councils population figures from Census and Statistics Department; 2) Voting results of District Councils Election from Registration and Electoral Office; 3) rating distribution of Chief Executive from regular tracking surveys.

限聚指數

Group Gathering Prohibition Index

4

- **最新調查日期 Latest survey date: 17-24/5/2021 (N=6,583)**
- **上次調查日期 Last survey date: 16-21/4/2021 (N=6,330)**
- **上上次調查日期 Second last survey date: 22-29/3/2021 (N=6,806)**

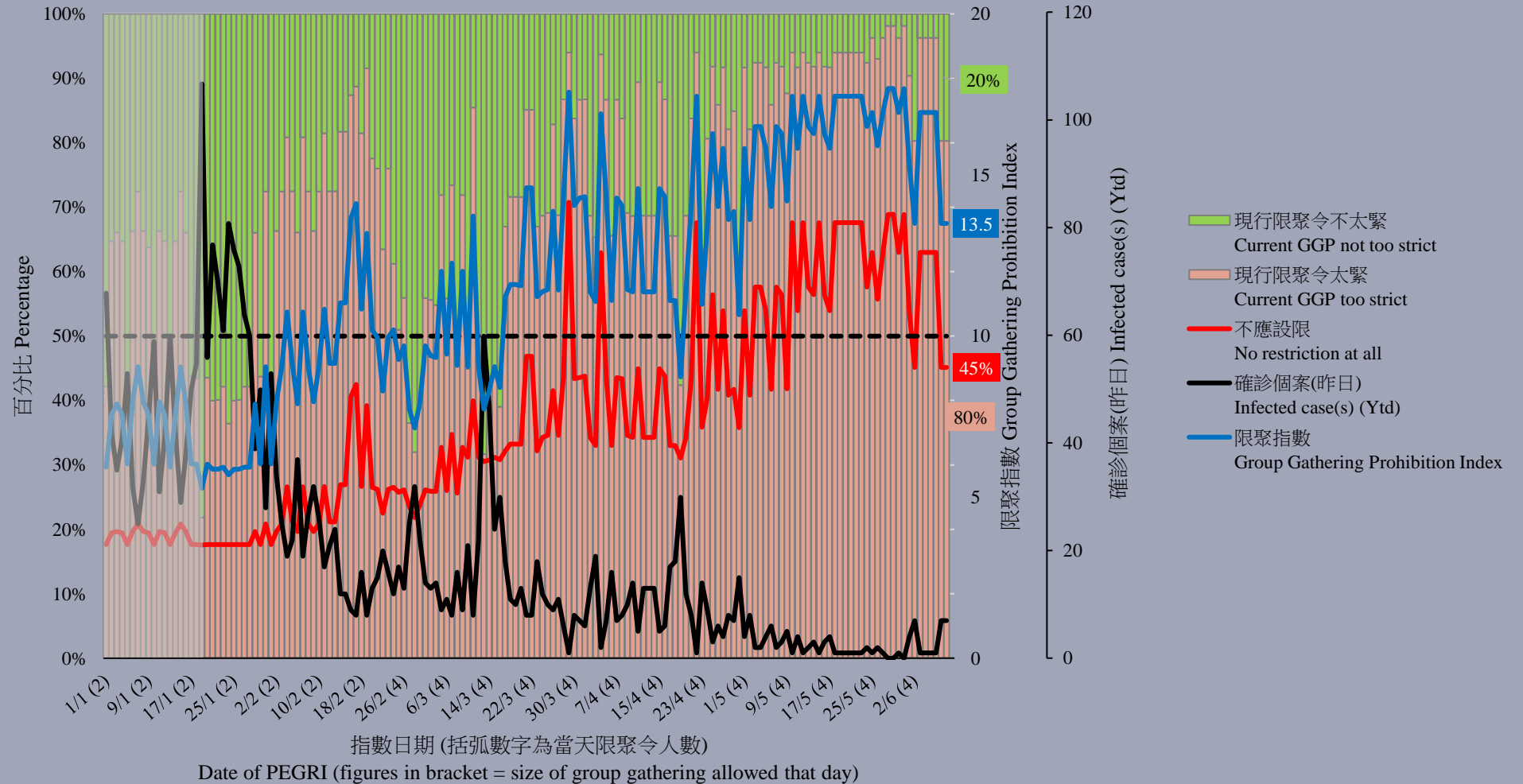
意見題目	Opinion Questions
<p>你認為香港應否無條件全面撤銷「限聚令」？</p> <ul style="list-style-type: none">▪ 應該無條件撤銷「限聚令」▪ 不應該，應視乎疫情而定▪ 不知道／很難說 <p>[追問沒有選擇應該“無條件撤銷「限聚令」”者]</p> <p>你認為每天新增確診個案數應是多少，才適合將「限聚令」訂於2人？</p> <p>你認為每天新增確診個案數應是多少，才適合將「限聚令」訂於4人？</p> <p>你認為每天新增確診個案數應是多少，才適合將「限聚令」訂於8人？</p> <p>你認為每天新增確診個案數應是多少，才適合將「限聚令」訂於16人？</p> <p>你認為感染個案清零多少天後，限聚令應該全面撤銷？</p> <p>請於以下欄位列舉你認為合適的 [個案數 及 限聚人數] 組合.....</p>	<p>Do you think the regulation prohibiting gatherings of more than a specific number of people in public places should be completely lifted unconditionally in Hong Kong?</p> <ul style="list-style-type: none">▪ Yes, the ban should be lifted unconditionally▪ No, it should depend on the epidemic situation▪ Don't know / hard to say <p>[For respondents NOT answering “Yes, the ban should be lifted unconditionally”]</p> <p>How many newly confirmed cases each day should there be before it would be appropriate to prohibit gatherings of more than 2 people?</p> <p>How many newly confirmed cases each day should there be before it would be appropriate to prohibit gatherings of more than 4 people?</p> <p>How many newly confirmed cases each day should there be before it would be appropriate to prohibit gatherings of more than 8 people?</p> <p>How many newly confirmed cases each day should there be before it would be appropriate to prohibit gatherings of more than 16 people?</p> <p>After how many days of zero infection do you think the group gathering ban should be lifted altogether?</p> <p>Please list combinations of [number of cases & number of people allowed in gatherings] that you think is appropriate in the field below:</p>

調查結果 - 限聚接受程度

Survey Result – Group Gathering Prohibition Acceptance Level

5

限聚接受程度 Group Gathering Prohibition Acceptance Level



限聚指數 - 分析評論

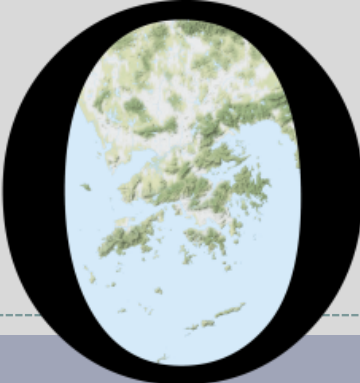
Group Gathering Prohibition Index – Commentary

6

青年創新企業家協會副主席楊炳昭指出：「政府早前宣布現行社交距離措施延長14天，適用於餐飲業務和表列處所的規定和限制，包括體育處所。政府亦宣布維持群組聚集和佩戴口罩的要求。我認為現時措施對於『體育處所』其實過緊。對於一些高強度訓練者及教練而言，4人的訓練小組或課堂要求他們全程佩戴口罩訓練實在是十分難受的，也有機會因為空氣侷促而造成休克，我建議可放寬至8人或以上的課堂才需要一些較嚴格的規定和限制。」

Vice Chairman of Young Innovative Entrepreneurs Association, Benjamin Yeung observed, “The Government announced earlier to further extend all social distancing measures, applicable to the catering business and scheduled premises including sports premises. The government also extended the requirements for group gatherings and mask wearing. I consider the current measures for ‘sports premises’ too tight. For some high-intensity trainers and coaches, a 4-person training group or class requiring everyone to wear a mask throughout the training is really unbearable, and there is also the chance of suffocation. I suggest relaxing these strict rules and restrictions to cover only classes of 8 people or more.”

POP



HONG KONG PUBLIC OPINION PROGRAM

HONG KONG PUBLIC OPINION RESEARCH INSTITUTE

香港民意研究所 之 香港民意研究計劃

Latest Tracking Poll Results

June 8, 2021

Contact Information

8

- Date of survey: 17-21/5/2021
- Survey method: Random telephone survey conducted by real interviewers
- Target population: Cantonese-speaking Hong Kong residents aged 18 or above
- Sample size: 1,004 (including 494 landline and 510 mobile samples)
- Effective response rate: 52.5%
- Sampling error: Sampling error of percentages not more than +/-4%, that of net values not more than +/-7% and that of ratings not more than +/-3.5 at 95% conf. level
- Weighting method: Rim-weighted according to figures provided by the Census and Statistics Department. The gender-age distribution of the Hong Kong population came from “Mid-year population for 2020”, while the educational attainment (highest level attended) distribution and economic activity status distribution came from “Women and Men in Hong Kong - Key Statistics (2020 Edition)”.

Survey Topic

9

- Popularity of Hong Kong Disciplinary Forces and the PLA Hong Kong Garrison
 - Fire Services Department
 - Auxiliary Medical Service
 - Government Flying Service
 - Civil Aid Service
 - Customs and Excise Department
 - Immigration Department
 - Independent Commission Against Corruption
 - Correctional Services Department
 - Police Force
 - PLA Hong Kong Garrison

Survey Result - Popularity of the disciplinary forces and the PLA HK Garrison

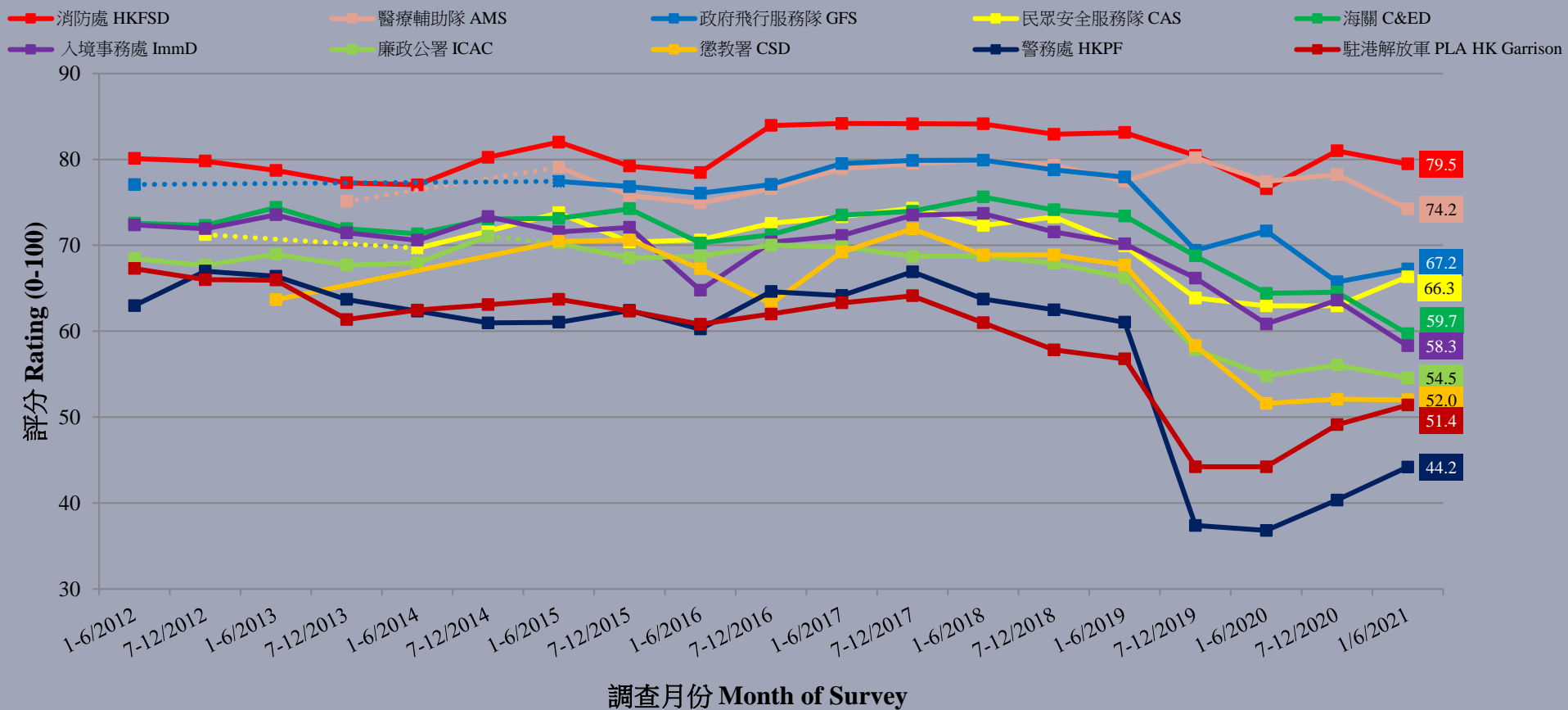
Satisfaction ratings	23-26/11/2020	17-21/5/2021	Change	Record
Fire Services Department	81.0	79.5	▼1.5	Record low since May 2020
Auxiliary Medical Service	78.2	74.2	▼4.0 *	All-time record low since Dec. 2013
Government Flying Service	65.7	67.2	▲1.5	Record high since May 2020
Civil Aid Service	62.9	66.3	▲3.4 *	Record high since Jun. 2019
Customs and Excise Department	64.5	59.7	▼4.9 *	All-time record low since Jun. 2012
Immigration Department	63.6	58.3	▼5.3 *	All-time record low since Jun. 2012
Independent Commission Against Corruption	56.1	54.5	▼1.5	All-time record low since Jul. 2013
Correctional Services Department	52.1	52.0	▼0.1	Record low since May 2020
Police Force	40.3	44.2	▲3.8	Record high since Jun. 2019
PLA Hong Kong Garrison	49.1	51.4	▲2.3	Record high since Jun. 2019

- Compared with half a year ago, the rating of the Civil Aid Service has increased significantly, whereas those of the Auxiliary Medical Service, the Customs and Excise Department and the Immigration Department have dropped significantly. The latter two have registered record lows since the relevant questions first started in 2012, while those of the Auxiliary Medical Service and the Independent Commission Against Corruption have registered record lows since they were first started in 2013.

* Significant change

Survey Result - Popularity of the disciplinary forces and the PLA HK Garrison

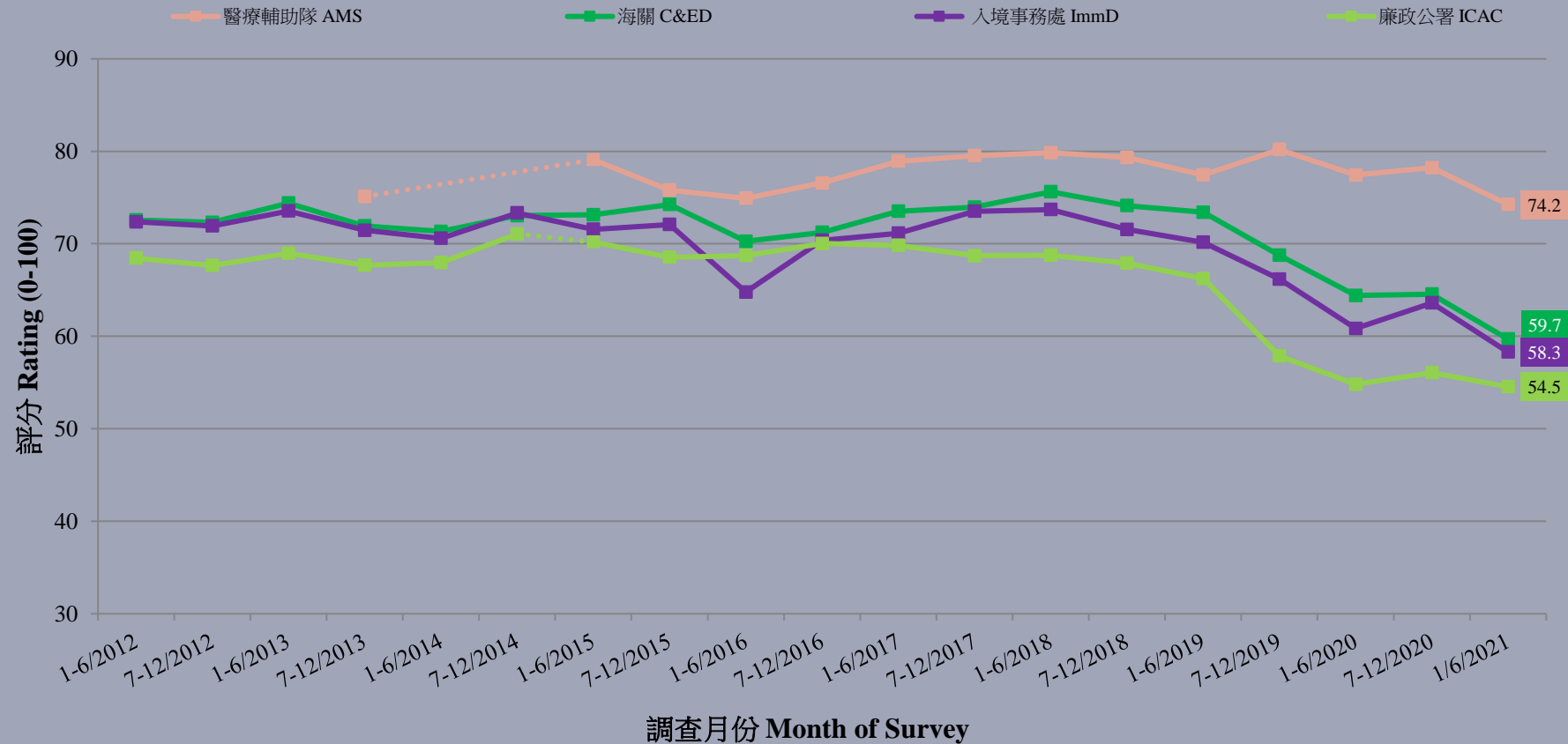
紀律部隊及駐港解放軍滿意度評分 - 綜合圖表 (半年結)
 Satisfaction Rating with the Disciplinary Force and PLA Hong Kong Garrison - Combined Charts (Half-Yearly Average)



Survey Result - Popularity of the disciplinary forces and the PLA HK Garrison

13

紀律部隊及駐港解放軍滿意度評分 - 綜合圖表 (半年結)
Satisfaction Rating with the Disciplinary Force and PLA Hong Kong Garrison - Combined
Charts (Half-Yearly Average)



Survey Result - Popularity of the disciplinary forces and the PLA HK Garrison

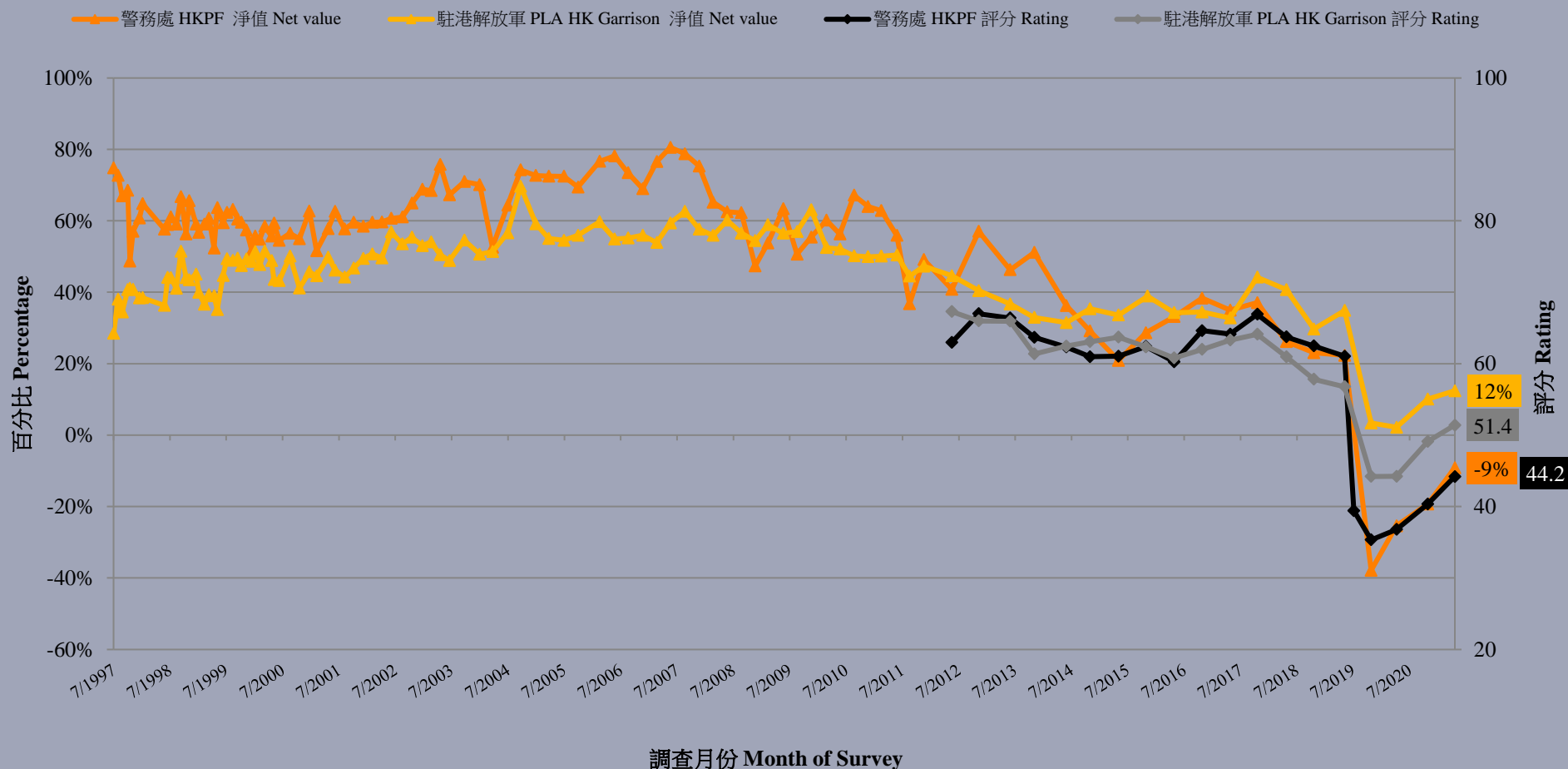
• The Hong Kong Police Force and the PLA Hong Kong Garrison

		23-26/11/2020	17-21/5/2021	Change	Record
Police Force	Rating	40.3	44.2	▲3.8	Record high since Jun. 2019
	Satisfaction rate	33%	37%	▲4%	Record high since Jun. 2019
	Dissatisfaction rate	52%	47%	▼6%	Record low since Jun. 2019
	Net satisfaction rate	-19%	-9%	▲10%	Record high since Jun. 2019
	Mean value	2.5	2.7	▲0.2 *	Record high since Jun. 2019
PLA Hong Kong Garrison	Rating	49.1	51.4	▲2.3	Record high since Jun. 2019
	Satisfaction rate	36%	37%	--	--
	Dissatisfaction rate	26%	24%	▼2%	Record low since Jun. 2019
	Net satisfaction rate	10%	12%	▲2%	Record high since Jun. 2019
	Mean value	3.1	3.2	▲0.1	Record high since Jun. 2019

* Significant change

Survey Result - Popularity of the disciplinary forces and the PLA HK Garrison

市民對香港警務處及駐港解放軍表現的滿意淨值/評分 (按次計算)
People's Net Satisfaction/Rating with HKPF and PLA HK Garrison (Per Poll)



Survey Result - Popularity of the disciplinary forces and the PLA HK Garrison

市民對香港警務處及駐港解放軍表現的滿意淨值/評分 (半年結)
 People's Net Satisfaction/Rating with HKPF and PLA HK Garrison (Half-Yearly Average)

