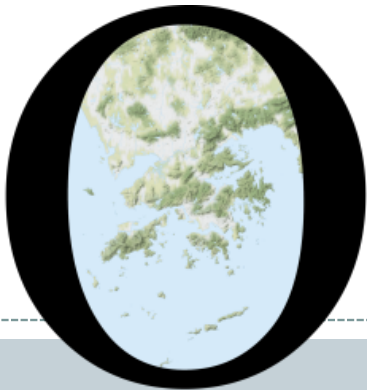


POP



HONG KONG PUBLIC OPINION PROGRAM

HONG KONG PUBLIC OPINION RESEARCH INSTITUTE

香港民意研究所 之 香港民意研究計劃

Community Democracy Project -

Community Health Module

Press Release

May 6, 2020

Contact Information - Community Health Module

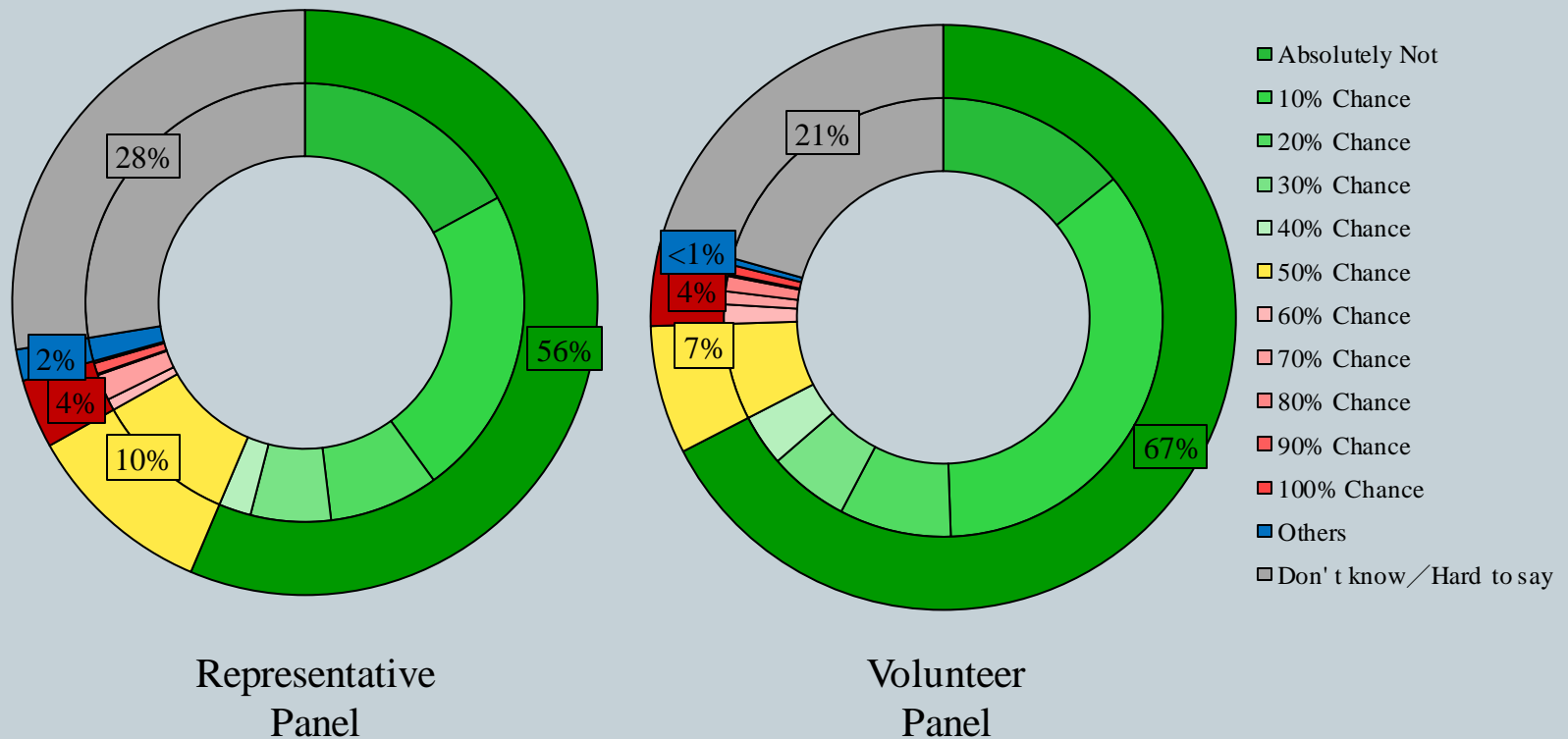
2

	HKPOP Panel	
Date of survey	1) April 4, 3pm - May 5, 3pm 2) May 5, 7pm – May 6, 9am	
Survey method	Online survey	
Target population	Hong Kong residents aged 12+	
	Representative Panel	Volunteer Panel
Total sample size	1) 828 ; 2) 507 (Prelim. samples)	1) 8,292 ; 2) 4,539 (Prelim. samples)
Response rate	10.5%	12.5%
Sampling error	Sampling error of percentages at 1) +/- 3% 2) +/-4% at 95% confidence level	Sampling error of percentages at +/-1% at 95% confidence level
Weighting method	The figures are rim-weighted according to 1) gender-age distribution of Hong Kong population and by District Councils population figures from Census and Statistics Department; 2) Voting results of District Councils Election from Registration and Electoral Office; 3) rating distribution of Chief Executive from regular tracking surveys.	

Survey Result - Community Health Module

3

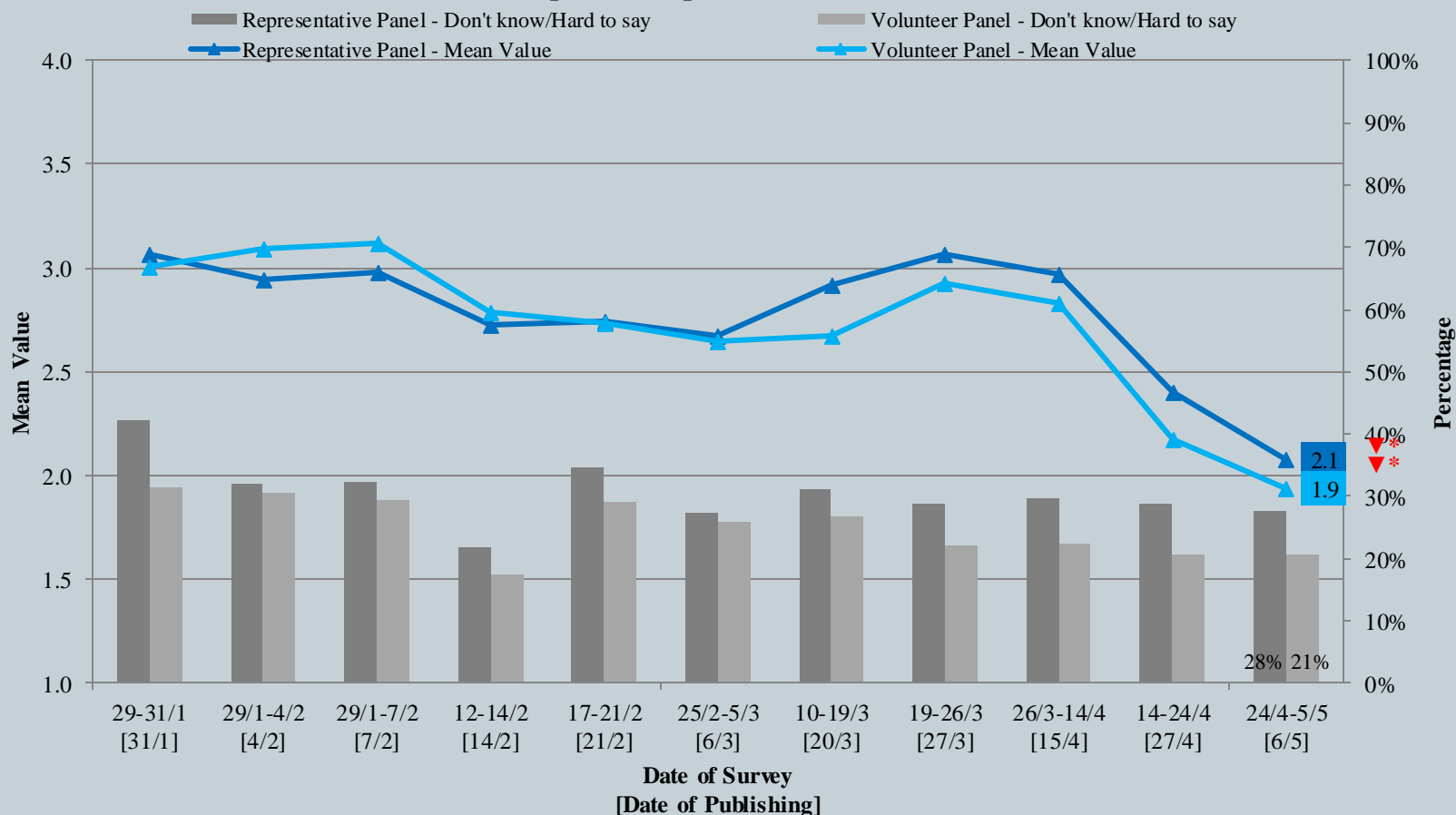
- Latest Date of survey: 24/4-5/5/2020
- Question: How likely do you think you will be infected with the Novel Coronavirus (COVID-19) in the next month, also known as “Wuhan pneumonia”?



Survey Result - Community Health Module

4

市民對預計感染新型冠狀病毒肺炎的機會率評估 Assessment of the public's expected chance of COVID-19 infection



*The answer options are 0-10 scale and "others/don't know/hard to say".

*Significant Change

Survey Result - Community Health Module

5

- Latest Date of survey: 24/4-5/5/2020
- Last Date of survey: 14-24/4/2020 (Representative Panel N=881 Volunteer N=9,040)

Opinion Question^		Hong Kong People Representative Panel (N=828)				Hong Kong People Volunteer Panel (N=8,285)			
		Satisfied	Half-half	Dissatisfied	Mean†	Satisfied	Half-half	Dissatisfied	Mean†
Q2 How satisfied or dissatisfied are you with the government's performance in handling novel coronavirus pneumonia?	Latest	31%	18%	50%	2.4	29%	10%	61%	2.3
	Last	38% ▲*	12% ▼*	50%	2.6	27% ▼*	13% ▲*	60%	2.3

* Answer options included: very much satisfied, somewhat satisfied, half-half, somewhat dissatisfied, very much dissatisfied and don't know / hard to say

† The mean value is calculated by quantifying all individual responses into 1, 2, 3, 4, 5 marks according to their degree of positive level, where 1 is the lowest and 5 the highest, and then calculate the sample mean.

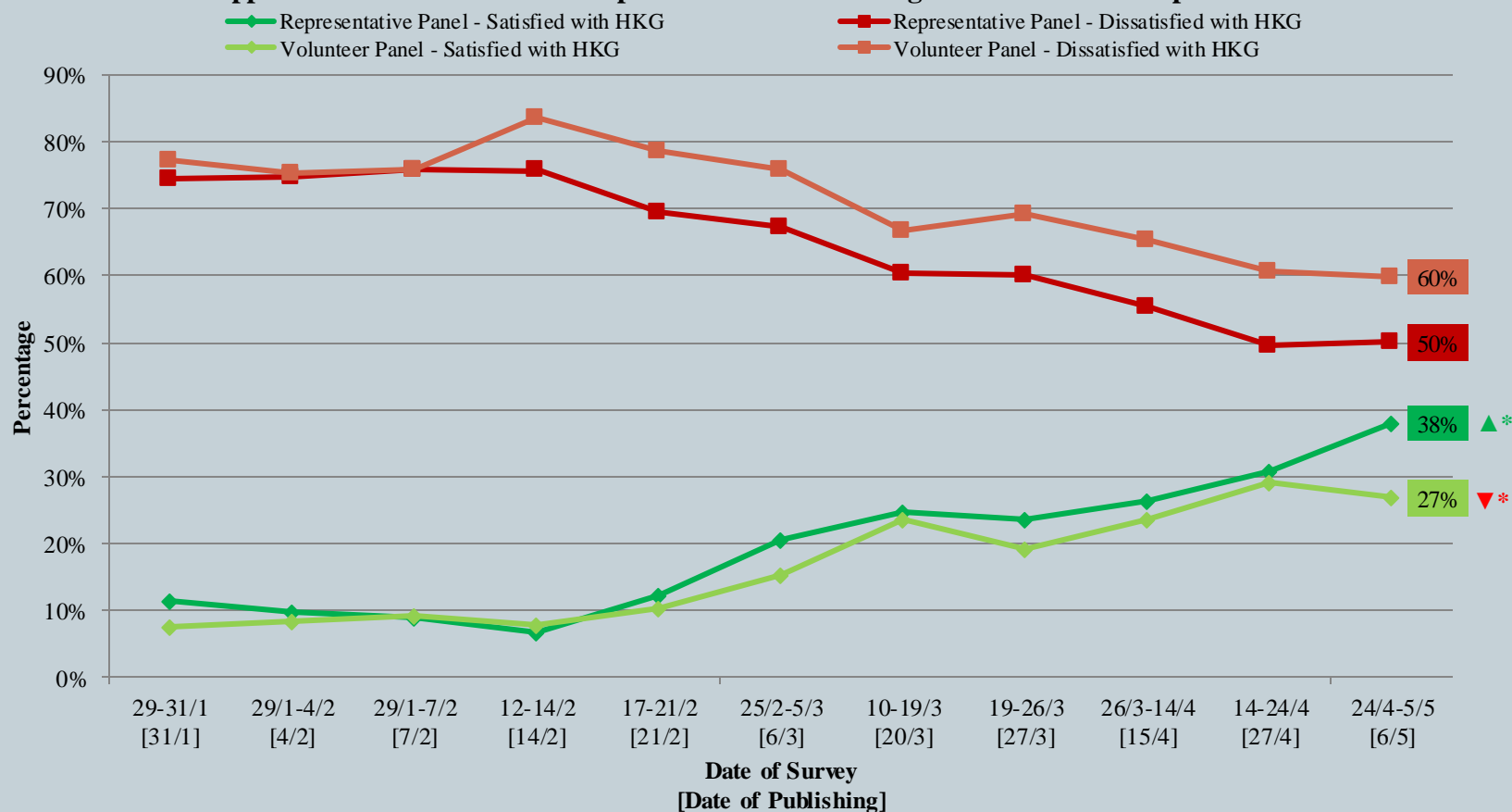
* Significant Change

Survey Result - Community Health Module

6

市民評價香港政府應付新冠肺炎的表現

Appraisal of HK Government's performance in handling novel coronavirus pneumonia



* Significant Change

Survey Result - Community Health Module

7

- Latest Date of survey: 5-6/5/2020 (Prelim. samples)

Opinion Question *		Hong Kong People Representative Panel (N=507)				Hong Kong People Volunteer Panel (N=4,525-4,536)			
		Answer Options	Answer Options	Answer Options	Mean Value	Answer Options	Answer Options	Answer Options	Mean Value
Q3 Overall speaking, how much do you support or oppose these measures^ ?	Options*	Support	Half-half	Oppose	Mean	Support	Half-half	Oppose	Mean
	Latest	60%	27%	9%	3.8	57%	30%	11%	3.8
Q4 Do you think these measures^ come too early, just in time or too late?	Options	Too early	Just in time	Too late	Don't know/Hard to say	Too early	Just in time	Too late	Don't know/Hard to say
	Latest	9%	57%	18%	16%	11%	57%	24%	9%
Q5 Do you think these measures^ are too strict, just right or too loose?	Options	Too early	Just in time	Too late	Don't know/Hard to say	Too early	Just in time	Too late	Don't know/Hard to say
	Latest	20%	60%	5%	15%	20%	60%	10%	9%

^ The new regulation announced by the government on May 5 afternoon

* Q3 Answer options included: very much support, somewhat support, half-half, somewhat oppose, very much oppose and don't know / hard to say ; Q4 Answer options included: too early, just in time, too late and don't know / hard to say ; Q5 Answer options included: too early, just in time, too late and don't know / hard to say

Survey Result - PENRI

8

Date of Publishing	22/4	23/4	24/4	25/4	26/4	27/4	28/4	29/4	30/4	1/5	2/5	3/5	4/5	5/5	6/5
Imported cases (Ytd)	4	4	2	0	2	0	0	0	0	0	2	0	0	1	0
Local Infected cases (Ytd)	0	0	0	0	0	0	0	0	0	0	0	0	0	0	0
Post-Epidemic Work Resumption (PEWRI)	31.6	29.9	29.4	35.4	28.3	33.5	32.6	50.6	53.0	53.4	42.9	52.7	53.7	43.7	53.8
Post-Epidemic School Resumption Index (PESRI)	16.1	16.3	18.0	22.3	18.6	21.1	20.1	44.3	46.5	46.7	31.2	46.6	46.6	31.1	46.3
Post-epidemic Gathering Resumption Index (PEGRI)	27.6	27.2	28.9	40.9	32.4	40.2	37.4	58.6	62.0	62.4	47.0	63.0	62.9	45.4	62.5
Post-Epidemic Public-Facilities Re-open Index (PEPRI)	21.6	21.6	21.2	29.6	25.8	30.1	29.3	57.3	59.8	60.8	45.1	60.7	61.2	45.0	60.8
Post-Epidemic Business Resumption PEBRI (beauty)	-	-	-	-	-	-	-	58.5	58.6	59.7	37.8	61.3	61.6	39.2	61.3
Post-Epidemic Business Resumption PEBRI (bar & club)	-	-	-	-	-	-	-	56.0	55.7	57.0	33.5	57.0	57.6	34.3	57.2
Post-Epidemic Business Resumption PEBRI (catering)	-	-	-	-	-	-	-	66.4	65.1	67.1	48.4	64.8	64.9	50.5	65.8
Post-Epidemic Business Resumption PEBRI (film)	-	-	-	-	-	-	-	64.1	62.9	65.0	40.6	62.7	63.3	41.8	62.7

Survey Result - PENRI

9

