

# POP



---

HONG KONG PUBLIC OPINION PROGRAM

HONG KONG PUBLIC OPINION RESEARCH INSTITUTE

香港民意研究所 之 香港民意研究計劃

---

**Community Democracy Project -**

**Community Health Module**

**Press Release**

**May 8, 2020**

# Contact Information - Community Health Module

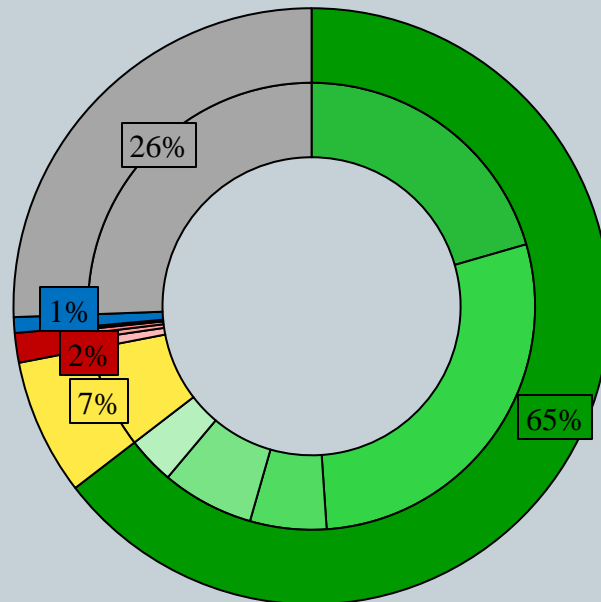
2

	<b>HKPOP Panel</b>	
Date of survey	May 5, 3pm – May 7, 3pm	
Survey method	Online survey	
Target population	Hong Kong residents aged 12+	
	Representative Panel	Volunteer Panel
Total sample size	758	7,343
Response rate	9.7%	11.1%
Sampling error	Sampling error of percentages at +/-4% at 95% confidence level	Sampling error of percentages at +/-1% at 95% confidence level
Weighting method	The figures are rim-weighted according to 1) gender-age distribution of Hong Kong population and by District Councils population figures from Census and Statistics Department; 2) Voting results of District Councils Election from Registration and Electoral Office; 3) rating distribution of Chief Executive from regular tracking surveys.	

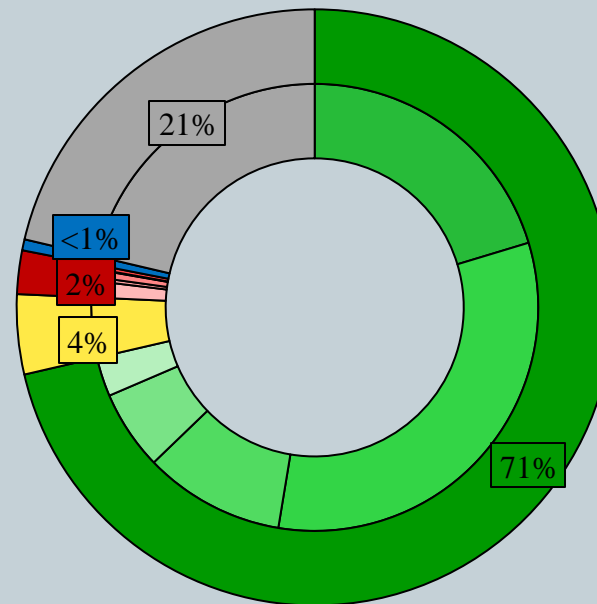
# Survey Result - Community Health Module

3

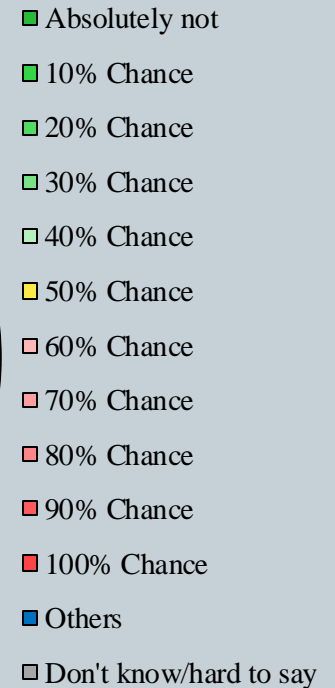
- Latest Survey of date: 5-7/5/2020
- Question: How likely do you think you will be infected with the Novel Coronavirus (COVID-19) in the next month, also known as “Wuhan pneumonia”?



Representative  
Panel



Volunteer  
Panel

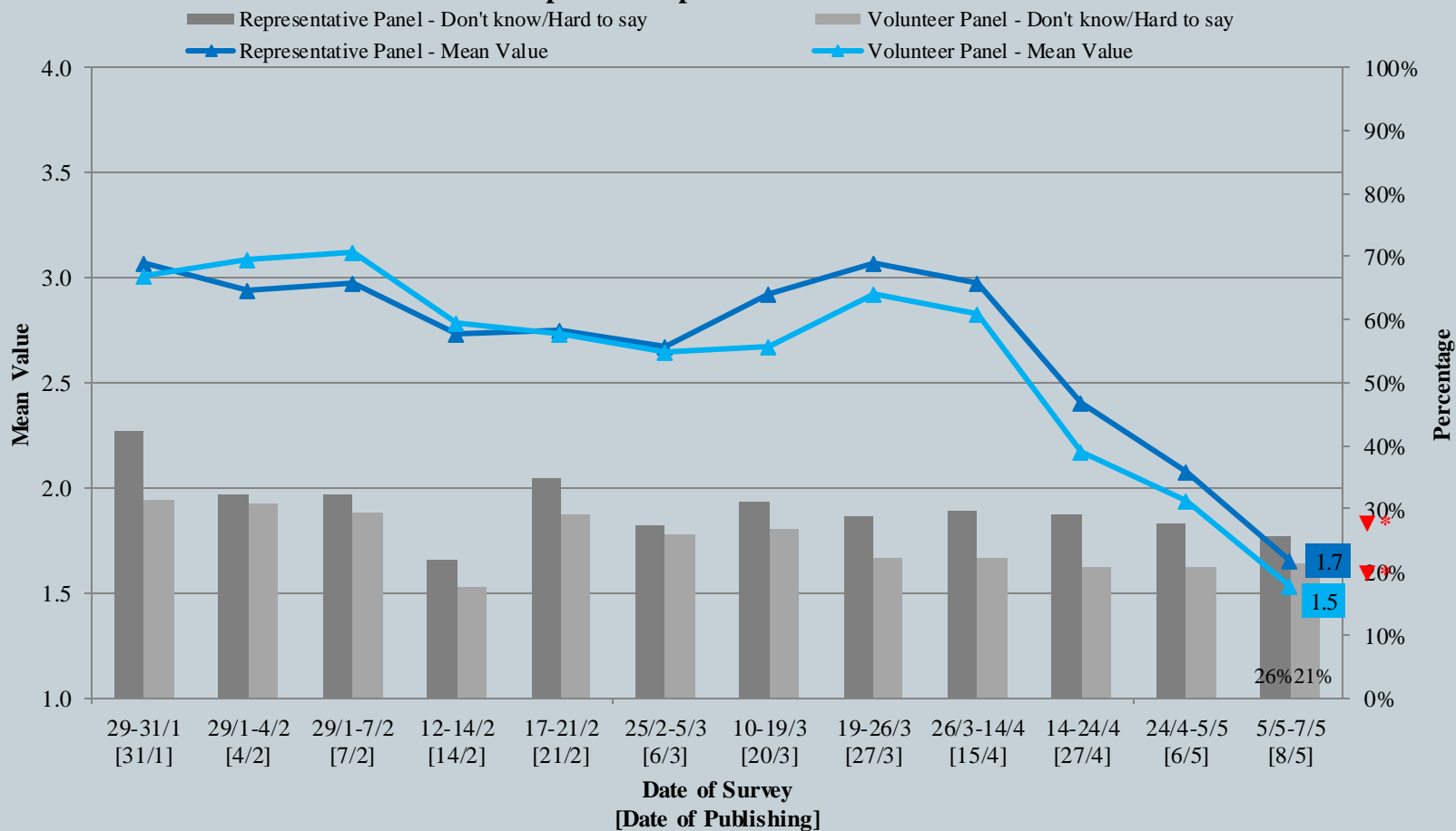


# Survey Result - Community Health Module

4

市民對預計感染 新型冠狀病毒肺炎 的機會率評估

Assessment of the public's expected chance of COVID-19 infection



\* The answer options are 0-10 scale and "others/don't know/hard to say".

\* Significant Change

# Survey Result - Community Health Module

5

- Latest Date of survey: 5-7/5/2020
- Last Date of survey: 24/4-5/5/2020 (Representative Panel N=828 Volunteer Panel N=8,285)

Opinion Question*		Hong Kong People Representative Panel (N=758)				Hong Kong People Volunteer Panel (N=7,334)			
		Satisfied	Half-half	Dissatisfied	Mean	Satisfied	Half-half	Dissatisfied	Mean
Q2 How satisfied or dissatisfied are you with the government's performance in handling novel coronavirus pneumonia?	Latest	38%	12%	<b>50%</b>	2.6	27%	13%	<b>60%</b>	2.3
	Last	38%	8% ▼*	<b>54%</b>	2.5	30% ▲*	11% ▼*	<b>60%</b>	2.4 ▲*

\* Answer options included: very much satisfied, somewhat satisfied, half-half, somewhat dissatisfied, very much dissatisfied and don't know / hard to say

\* **Significant Change**

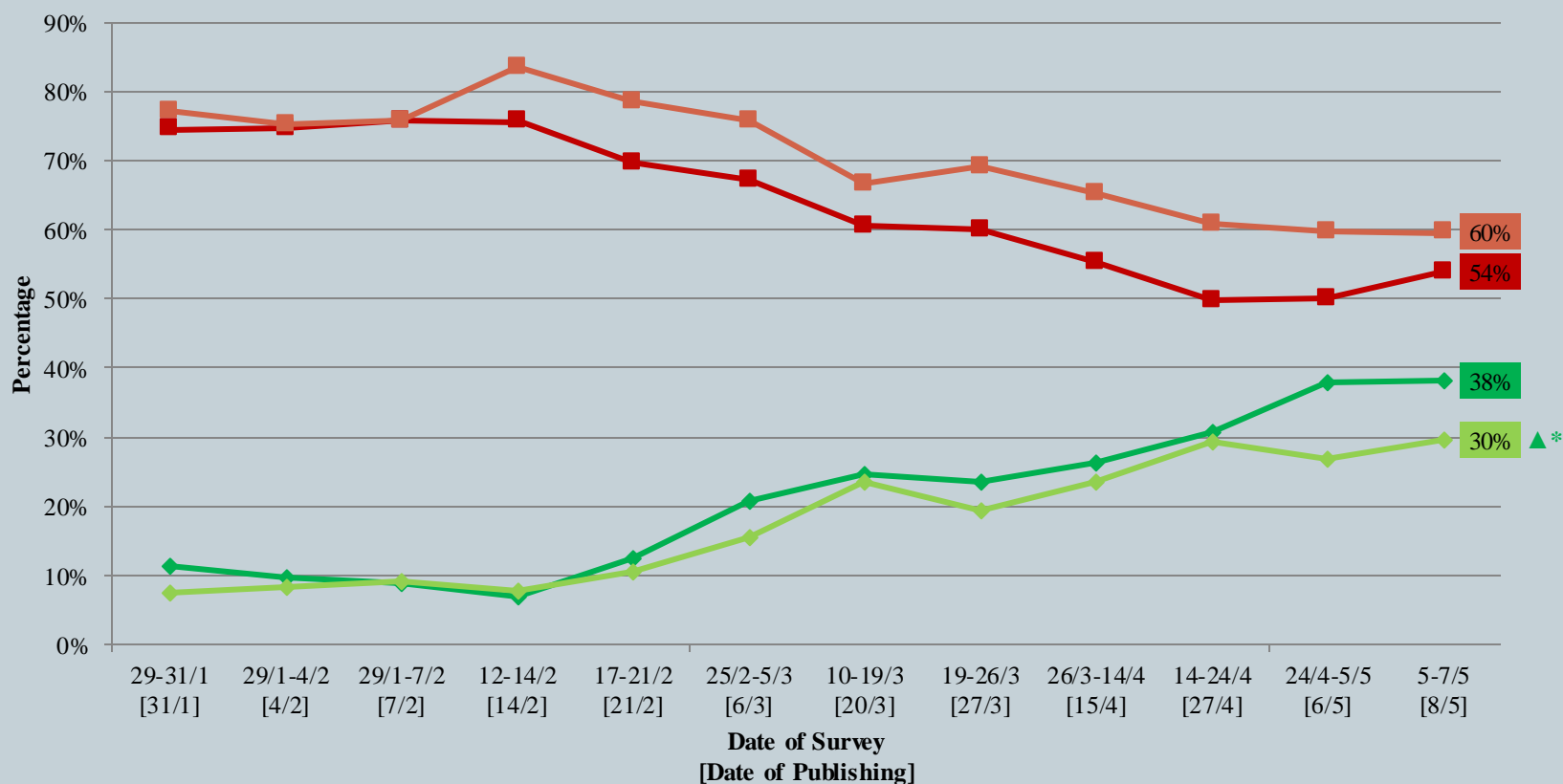
# Survey Result - Community Health Module

6

## 市民評價香港政府應付新冠肺炎的表現

### Appraisal of HK Government's performance in handling novel coronavirus pneumonia

代表組群 - 滿意港府    代表組群 - 不滿港府    自結組群 - 滿意港府    自結組群 - 不滿港府



\* Significant Change

# Survey Result - Community Health Module

7

- Latest Date of survey: 5-7/5/2020

Opinion Question*		Hong Kong People Representative Panel (N=755-758)				Hong Kong People Volunteer Panel (N=7,313-7,340)			
		Answer Options	Answer Options	Answer Options	Mean Value	Answer Options	Answer Options	Answer Options	Mean Value
Q3 Overall speaking, how much do you support or oppose these measures ^ ?	Options*	Support	Half-half	Oppose	Mean	Support	Half-half	Oppose	Mean
	Latest	<b>61%</b>	27%	9%	3.8	<b>56%</b>	28%	13%	3.7
Q4 Do you think these measures^ come too early, just in time or too late?	Options	Too early	Just in time	Too late	Don't know/Hard to say	Too early	Just in time	Too late	Don't know/Hard to say
	Latest	9%	<b>62%</b>	19%	10%	11%	<b>55%</b>	25%	9%
Q5 Do you think these measures^ are too strict, just right or too loose?	Options	Too early	Just in time	Too late	Don't know/Hard to say	Too early	Just in time	Too late	Don't know/Hard to say
	Latest	19%	<b>66%</b>	7%	9%	22%	<b>58%</b>	10%	11%

^ The new regulation announced by the government on May5 afternoon

\* Q3 Answer options included: very much support, somewhat support, half-half, somewhat oppose, very much oppose and don't know / hard to say ; Q4 Answer options included: too early, just in time, too late and don't know / hard to say; Q5 Answer options included: too early, just in time, too late and don't know / hard to say

# Survey Result - Community Health Module

- **Hong Kong People Representative Panel (N=758)**

		Q3 Overall speaking, how much do you support or oppose these measures ^ ?			
		Support (n=299)	Half-half (n=323)	Oppose (n=117)	Total (n=758)
Q2 How satisfied or dissatisfied are you with the government's performance in handling novel coronavirus pneumonia?	Satisfied	<b>61%</b>	3%	3%	38%
	Half-half	11%	3%	<1%	8%
	Dissatisfied	28%	<b>93%</b>	<b>97%</b>	<b>54%</b>
	Total	100%	100%	100%	100%

^ The new regulation announced by the government on May5 afternoon.



# Survey Result - Community Health Module

9

- Question: Do you have other comments on the government's implementation of these measures? (N=2,492)

Respondent's views	Related keywords (Number of times)
(1) <b>The prohibition on group gathering might have slipped into political tools:</b> Many respondents think that the prohibition on group gathering is meant for "political suppression", for example, to restrict people's freedom of assembly; and there are also concerns about unfair enforcement of this regulation.	Suppression (333) Politics (259) Police (168) Abuse (100) Unfair enforcement (99) Rallies (99) Selective enforcement (66)
(2) <b>The new measures are not implemented on a timely manner:</b> There are quite a number of views that the implementation of new measure are "too late", criticizing the government "knows in hindsight", and the measures are not effective.	Late (92) Slow (74) Know in hindsight (36) Too long (2)
(3) <b>The new measures are not supported by scientific evidence and not reasonable:</b> Some comments are that the new measures lack scientific support (e.g. rising the limit of group gathering from 4 to 8 people, and requiring at least 1.5 meters between tables in restaurants). There are also views that the prohibition on group gathering are unreasonable, for example, taking public transport also involves high risk of infection, but it is not included.	Scientific basis (114) Rationale (13) Unreasonable (13) Unrealistic (5)
(4) <b>The border closure is of paramount importance:</b> There are quite a number of views that the implementation of border closure is the most important to stop the spread of the epidemic, which would be more effective than prohibition on group gathering.	Border closure (194) Immigration (56) Gate (39)
(5) <b>Relaxation or flexibility should be allowed under special circumstances:</b> Some mentioned that under certain preconditions, such as universal masking or strict implementation of the quarantine measures, the prohibition on group gathering should be further relaxed or lifted. There are also comments that the closure or restriction of certain venues should be entitled to some flexibility according to the actual situation, for example, the restriction on restaurants could be relaxed, but beauty parlours/ fitness centres/ mahjong premises/ amusement game centres should be handled with caution.	The prohibition on group gathering (603) Cancellation (182) Relaxation (127) Discharge (25) Flexibility (3) Withdrawal (4) Restaurants (32) Bars (30) Beauty parlours (17) Mahjong premises (41) Fitness centres (19) Amusement game centres (13)
(6) <b>Economic crackdown:</b> There are a few comments that the measures have dealt a blow to the local economy, and hope the government could provide financial support to merchants or affected employees.	Economy (40) Livelihood (4) Hitting businesses (1)

# Survey Result - PENRI

10

Date of Publishing	22/4	23/4	24/4	25/4	26/4	27/4	28/4	29/4	30/4	1/5	2/5	3/5	4/5	5/5	6/5	7/5	8/5
Imported cases (Ytd)	4	4	2	0	2	0	0	0	0	0	2	0	0	1	0	0	4
Local Infected cases (Ytd)	0	0	0	0	0	0	0	0	0	0	0	0	0	0	0	0	0
Post-Epidemic Work Resumption (PEWRI)	31.6	29.9	29.4	35.4	28.3	33.5	32.6	50.6	53.0	53.4	42.9	52.7	53.7	43.7	53.8	60.5	48.5
Post-Epidemic School Resumption Index (PESRI)	16.1	16.3	18.0	22.3	18.6	21.1	20.1	44.3	46.5	46.7	31.2	46.6	46.6	31.1	46.3	-	-
Post-epidemic Gathering Resumption Index (PEGRI)	27.6	27.2	28.9	40.9	32.4	40.2	37.4	58.6	62.0	62.4	47.0	63.0	62.9	45.4	62.5	71.5	54.5
Post-Epidemic Public-Facilities Re-open Index (PEPRI)	21.6	21.6	21.2	29.6	25.8	30.1	29.3	57.3	59.8	60.8	45.1	60.7	61.2	45.0	60.8	-	-
Post-Epidemic Business Resumption PEBRI (beauty)	-	-	-	-	-	-	-	58.5	58.6	59.7	37.8	61.3	61.6	39.2	61.3	-	-
Post-Epidemic Business Resumption PEBRI (bar & club)	-	-	-	-	-	-	-	56.0	55.7	57.0	33.5	57.0	57.6	34.3	57.2	-	-
Post-Epidemic Business Resumption PEBRI (catering)	-	-	-	-	-	-	-	66.4	65.1	67.1	48.4	64.8	64.9	50.5	65.8	-	-
Post-Epidemic Business Resumption PEBRI (film)	-	-	-	-	-	-	-	64.1	62.9	65.0	40.6	62.7	63.3	41.8	62.7	-	-

# Survey Result - PENRI

11

