

# POP



---

HONG KONG PUBLIC OPINION PROGRAM

HONG KONG PUBLIC OPINION RESEARCH INSTITUTE

香港民意研究所 之 香港民意研究計劃

---

**Community Democracy Project -**

**Community Health Module**

**Press Release**

**May 19, 2020**

# Contact Information - Community Health Module

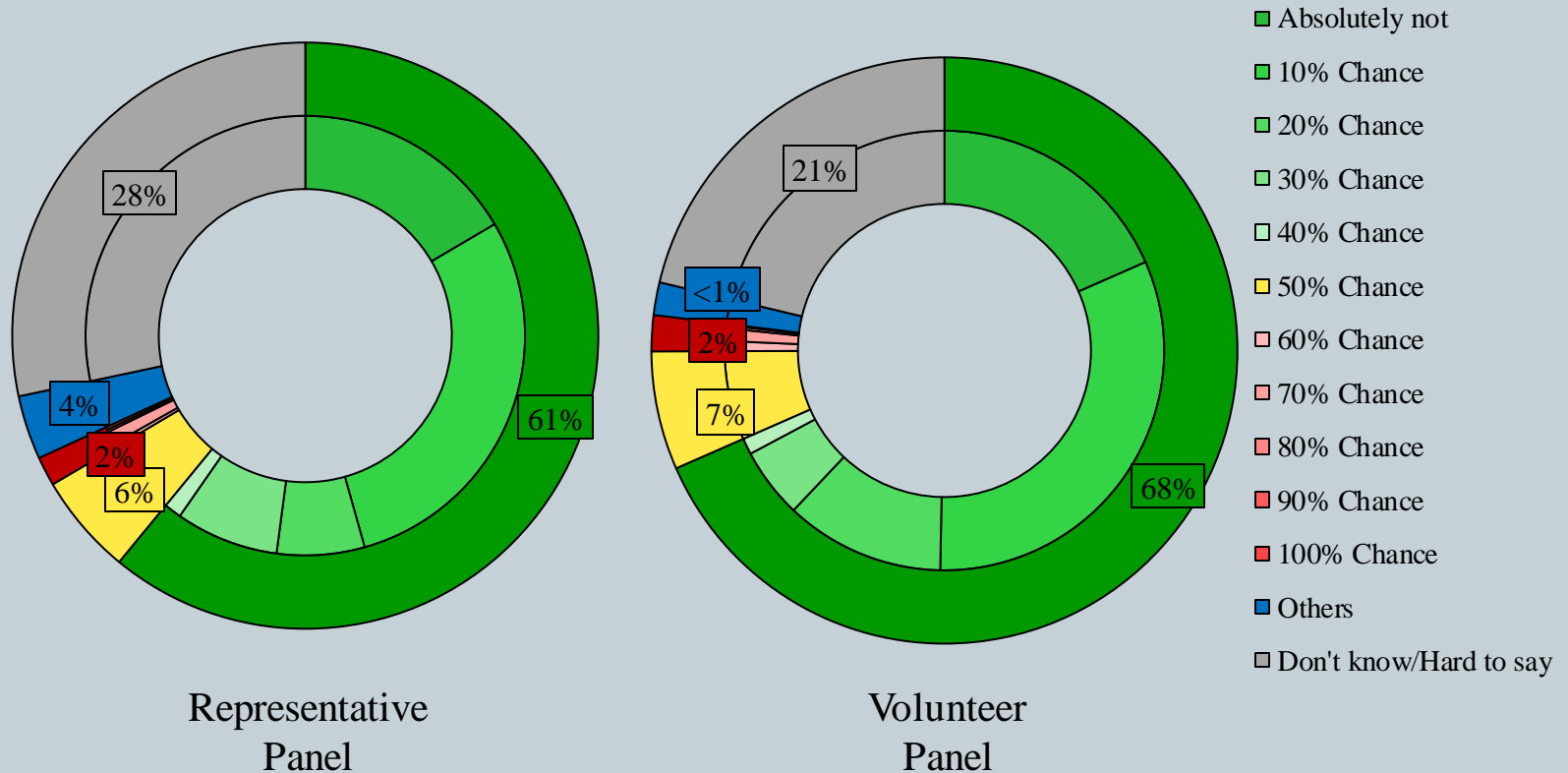
2

	HKPOP Panel	
Date of survey	May 12, 3pm – May 18, 3pm	
Survey method	Online survey	
Target population	Hong Kong residents aged 12+	
	Representative Panel	Volunteer Panel
Total sample size	858	8,770
Response rate	10.9%	13.2%
Sampling error	Sampling error of percentages at +/-3% at 95% confidence level	Sampling error of percentages at +/-1% at 95% confidence level
Weighting method	The figures are rim-weighted according to 1) gender-age distribution of Hong Kong population and by District Councils population figures from Census and Statistics Department; 2) Voting results of District Councils Election from Registration and Electoral Office; 3) rating distribution of Chief Executive from regular tracking surveys.	

# Survey Result - Community Health Module

3

- Latest Date of survey: 12-18/5/2020
- Question: How likely do you think you will be infected with the Novel Coronavirus (COVID-19) in the next month, also known as “Wuhan pneumonia”?



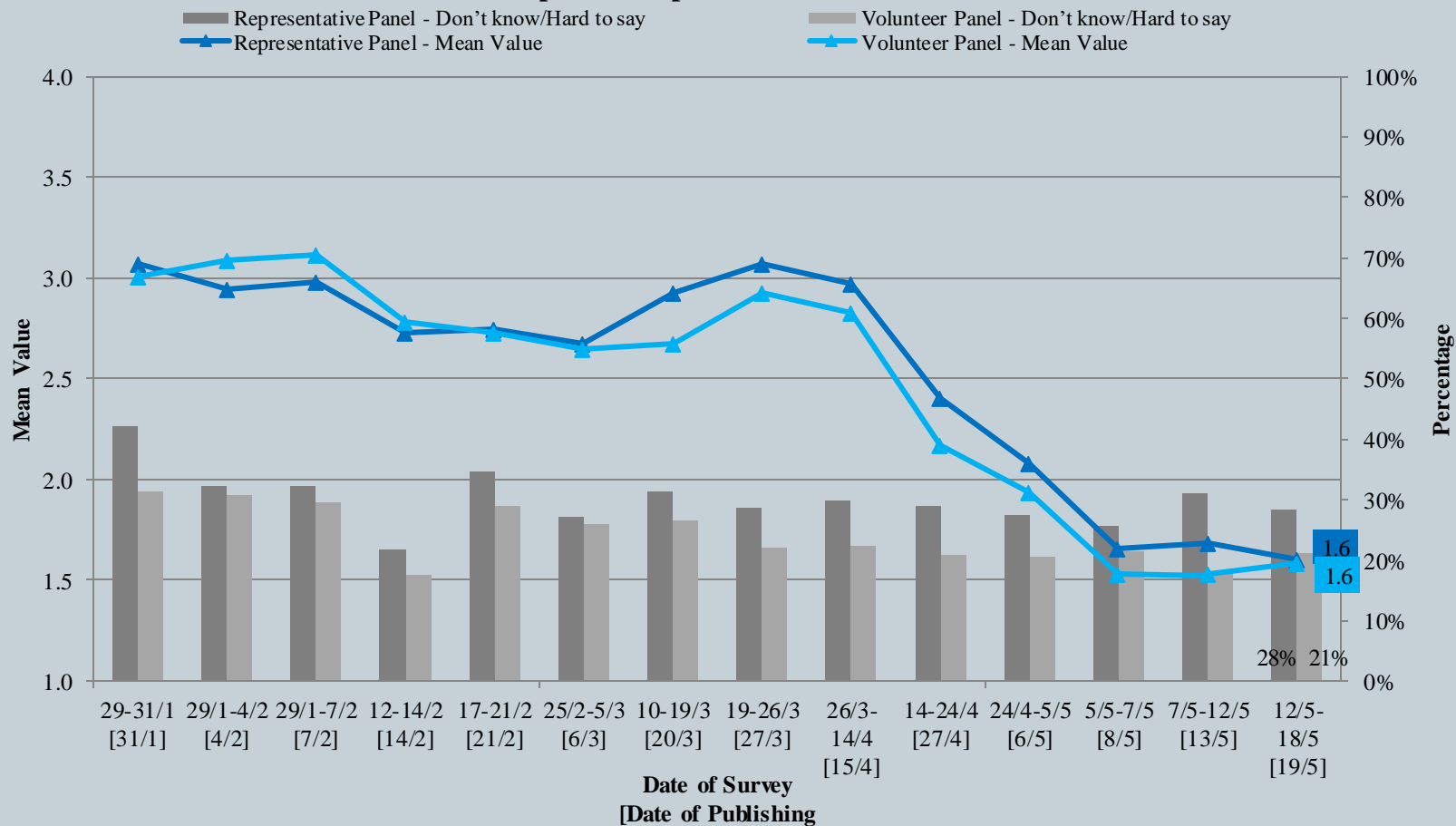
^ The answer options are 0-10 scale and “others/don’t know/hard to say”.

# Survey Result - Community Health Module

4

## 市民對預計感染新型冠狀病毒肺炎的機會率評估

### Assessment of the public's expected chance of COVID-19 infection



\* The answer options are 0-10 scale and "others/don't know/hard to say"

# Survey Result - Community Health Module

5

- **Latest Date of survey** : 12-18/5/2020
- **Last Date of survey** : 7-12/5/2020 (*Representative Panel N=739 Volunteer Panel N=7,420*)

Opinion Question*		Hong Kong People Representative Panel (N=856)				Hong Kong People Volunteer Panel (N=8,762)			
		Satisfied	Half-half	Dissatisfied	Mean†	Satisfied	Half-half	Dissatisfied	Mean†
Q2 How satisfied or dissatisfied are you with the government's performance in handling novel coronavirus pneumonia?	Latest	41%	9%	<b>50%</b>	2.6	32%	9%	<b>59%</b>	2.4
	Last	41%	8%	<b>50%</b>	2.6	31%	9%	<b>60%</b>	2.4

\* Answer options included: very much satisfied, somewhat satisfied, half-half, somewhat dissatisfied, very much dissatisfied and don't know / hard to say

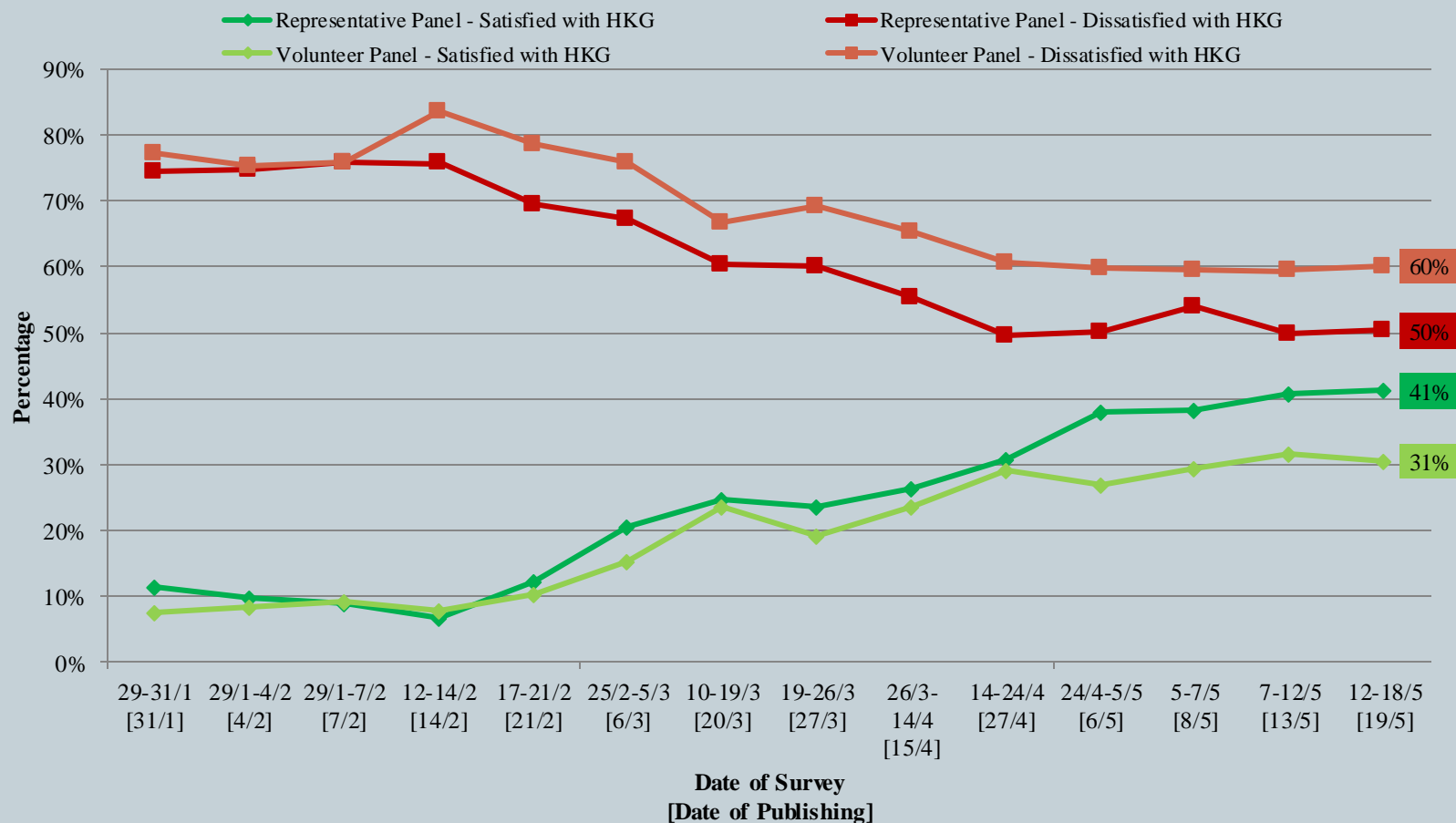
† The mean value is calculated by quantifying all individual responses into 1, 2, 3, 4, 5 marks according to their degree of positive level, where 1 is the lowest and 5 the highest, and then calculate the sample mean.

# Survey Result - Community Health Module

6

## 市民評價香港政府應付新冠肺炎的表現

### Appraisal of HK Government's performance in handling novel coronavirus pneumonia



# Survey Result - Community Health Module

7

- Latest Date of survey : 12-18/5/2020

Opinion Question*	Hong Kong People Representative Panel (N=858)				Hong Kong People Volunteer Panel (N=8,767)			
	Very confident	Half-half	Not confident	Mean	Very confident	Half-half	Not confident	Mean
Q3 The government has just announced the distribution of reusable CuMask, but it immediately led to many queries. Overall speaking, how confident are you in the effectiveness of CuMask?	39%	13%	<b>46%</b>	2.6	30%	9%	<b>58%</b>	2.3

\* Answer options included: very confident, somewhat confident, half-half, somewhat not confident, very much not confident and don't know / hard to say





# Survey Result - PENRI

9

