

POP



HONG KONG PUBLIC OPINION PROGRAM

HONG KONG PUBLIC OPINION RESEARCH INSTITUTE

香港民意研究所 之 香港民意研究計劃

Community Democracy Project -

Community Health Module

Press Release

July 10, 2020

Contact Information - Community Health Module

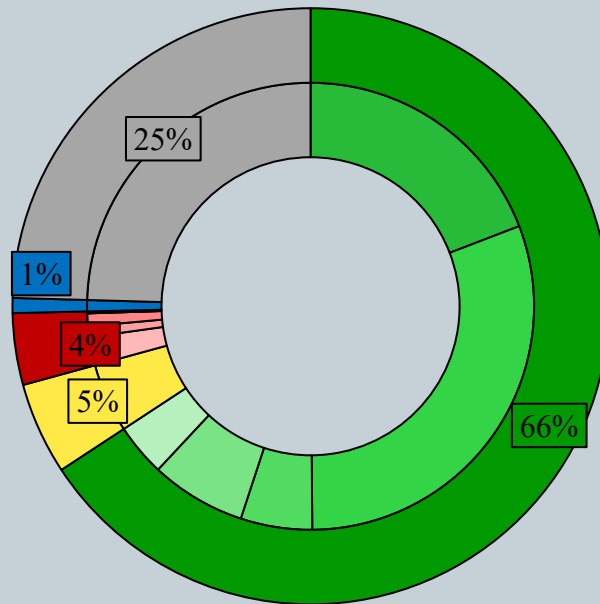
2

	HKPOP Panel	
Date of survey	July 2, 3pm – July 9, 3pm	
Survey method	Online survey	
Target population	Hong Kong residents aged 12+	
	Representative Panel	Volunteer Panel
Total sample size	812	7,896
Response rate	10.3%	11.8%
Sampling error	Sampling error of percentages at +/-3% at 95% confidence level	Sampling error of percentages at +/-1% at 95% confidence level
Weighting method	The figures are rim-weighted according to 1) gender-age distribution of Hong Kong population and by District Councils population figures from Census and Statistics Department; 2) Voting results of District Councils Election from Registration and Electoral Office; 3) rating distribution of Chief Executive from regular tracking surveys.	

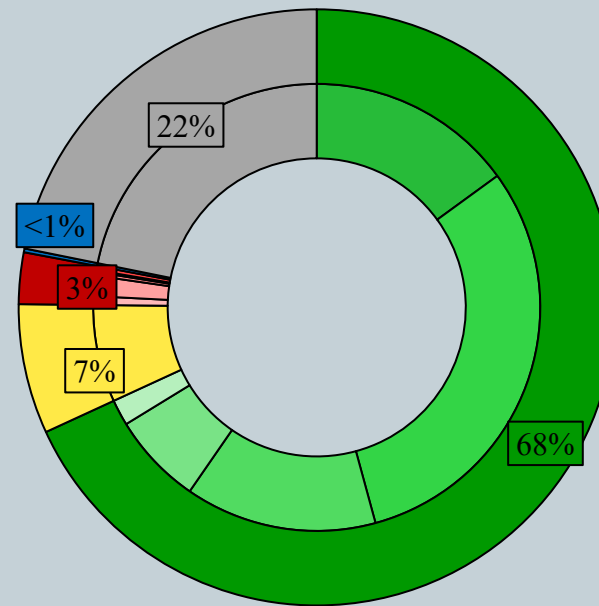
Survey Result - Community Health Module

3

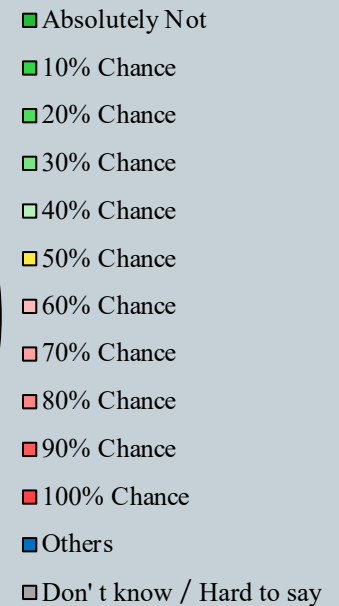
- Latest Date of survey: 2-9/7/2020
- Question: How likely do you think you will be infected with the Novel Coronavirus (COVID-19) in the next month, also known as “Wuhan pneumonia”?



Representative
Panel



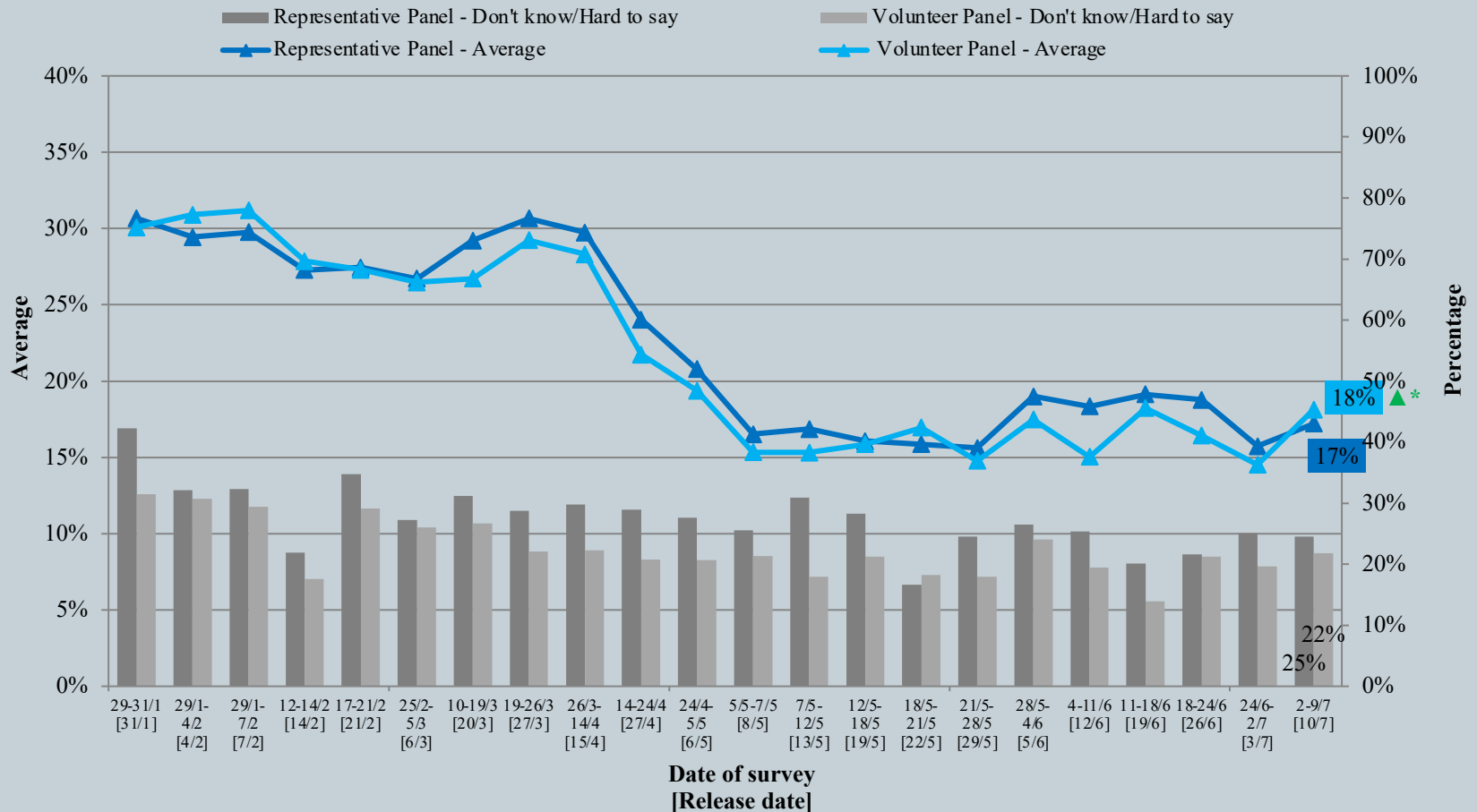
Volunteer
Panel



Survey Result - Community Health Module

4

Assessment of the public's expected chance of COVID-19 infection



^ The answer options are 0-10 scale and "others/don't know/hard to say".

* Significant change

Survey Result - Community Health Module

5

- **Latest Date of survey: 2-9/7/2020**
- **Last Date of survey: 24/6-2/7/2020** (*Representative Panel N=789 Volunteer Panel N=7,513*)

Opinion Question [^]		Hong Kong People Representative Panel (N=812)				Hong Kong People Volunteer Panel (N=7,886)			
		Satisfied	Half-half	Dissatisfied	Mean [†]	Satisfied	Half-half	Dissatisfied	Mean [†]
Q2 How satisfied or dissatisfied are you with the government's performance in handling novel coronavirus pneumonia?	Latest	35%	12%	53%	2.5	29% ▼*	12% ▲*	58% ▲*	2.4 ▼*
	Last	37%	13%	50%	2.6	35%	9%	56%	2.4

[^] Answer options included: very much satisfied, somewhat satisfied, half-half, somewhat dissatisfied, very much dissatisfied and don't know / hard to say

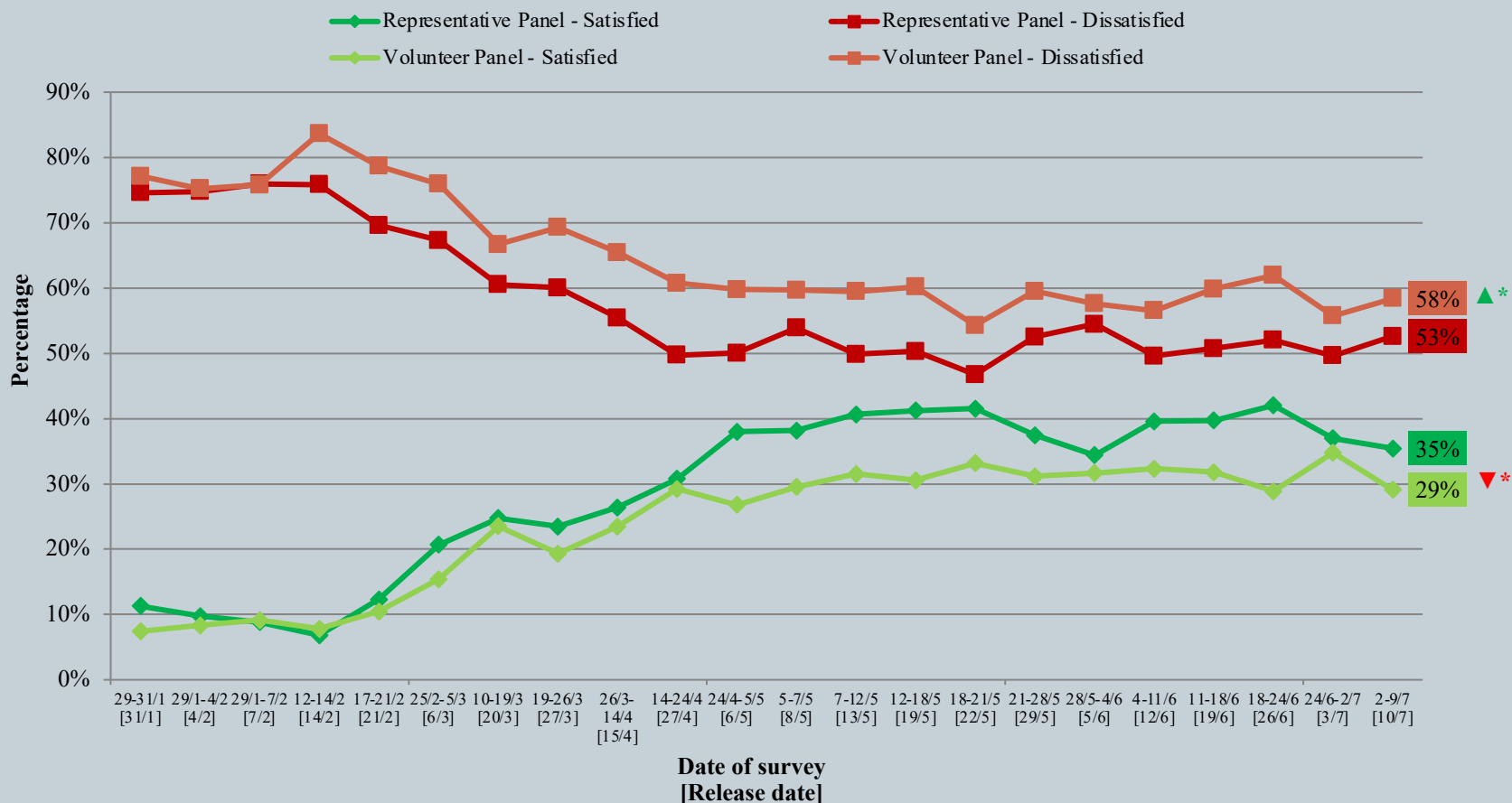
[†] The mean value is calculated by quantifying all individual responses into 1, 2, 3, 4, 5 marks according to their degree of positive level, where 1 is the lowest and 5 the highest, and then calculate the sample mean.

* Significant change

Survey Result - Community Health Module

6

Appraisal of HK Government's performance in handling novel coronavirus pneumonia



^ Answer options included: very much satisfied, somewhat satisfied, half-half, somewhat dissatisfied, very much dissatisfied and don't know / hard to say.

* Significant change

Contact Information - PENRI

7

	HKPOP Panel
Date of survey	June 29, 3pm – July 9, 3pm
Survey method	Online survey
Target population	Hong Kong residents aged 12+
Total sample size	8,759
Response rate	11.7%
Sampling error	Sampling error of percentages at +/-1% at 95% confidence level
Weighting method	The figures are rim-weighted according to 1) gender-age distribution of Hong Kong population and by District Councils population figures from Census and Statistics Department; 2) Voting results of District Councils Election from Registration and Electoral Office; 3) rating distribution of Chief Executive from regular tracking surveys.

Survey Result - PENRI

8

Date of Publishing	24/6	25/6	26/6	27/6	28/6	29/6	30/6	1/7	2/7	3/7	4/7	5/7	6/7	7/7	8/7	9/7	10/7
Imported cases(Ytd)	16	2	14	3	1	2	4	2	28	9	5	11	8	16	5	5	8
Local infected cases(Ytd)	0	0	0	0	0	0	0	0	0	0	0	0	2	1	9	19	34
Post-Epidemic Gathering Resumption Index (PEGRI)	49.2	54.7	50.9	56.1	66.8	66.8	66.9	64.6	57.5	63.3	63.4	59.2	27.2	27.3	26.4	25.6	26.6

Survey Result - PENRI

9

