

POP



HONG KONG PUBLIC OPINION PROGRAM

HONG KONG PUBLIC OPINION RESEARCH INSTITUTE

香港民意研究所 之 香港民意研究計劃

限聚指數

Group Gathering Prohibition Index

10/8/2021

樣本資料 - 限聚指數基準調查

Contact Information - Group Gathering Prohibition Index Benchmark Survey

2

	香港民研意見群組成員 HKPOP Panel
調查日期 Survey date	16/7 15:00 – 21/7 15:00
調查方法 Survey method	以電郵接觸群組成員，並於網上完成調查 Online survey
訪問對象 Target population	十二歲或以上的香港市民 Hong Kong residents aged 12+
總成功樣本 Total sample size	5,636
回應比率 Response rate	6.1%
抽樣誤差 Sampling error	95% 置信水平，百分比誤差 +/-1% Sampling error of percentages at +/-1% at 95% confidence level
加權方法 Weighting method	按照1) 政府統計處提供的全港人口年齡及性別分佈統計數字、各區議會人口數字； 2) 選舉事務處提供的區議會選舉結果；3) 常規調查中的特首評分分佈數字，以 「反覆多重加權法」作出調整。 The figures are rim-weighted according to 1) gender-age distribution of Hong Kong population and by District Councils population figures from Census and Statistics Department; 2) Voting results of District Councils Election from Registration and Electoral Office; 3) rating distribution of Chief Executive from regular tracking surveys.

限聚指數

Group Gathering Prohibition Index

3

- **最新調查日期 Latest survey date: 16-21/7/2021 (N=5,636)**
- **上次調查日期 Last survey date: 18-23/6/2021 (N=6,158)**
- **上上次調查日期 Second last survey date: 17-24/5/2021 (N=6,583)**

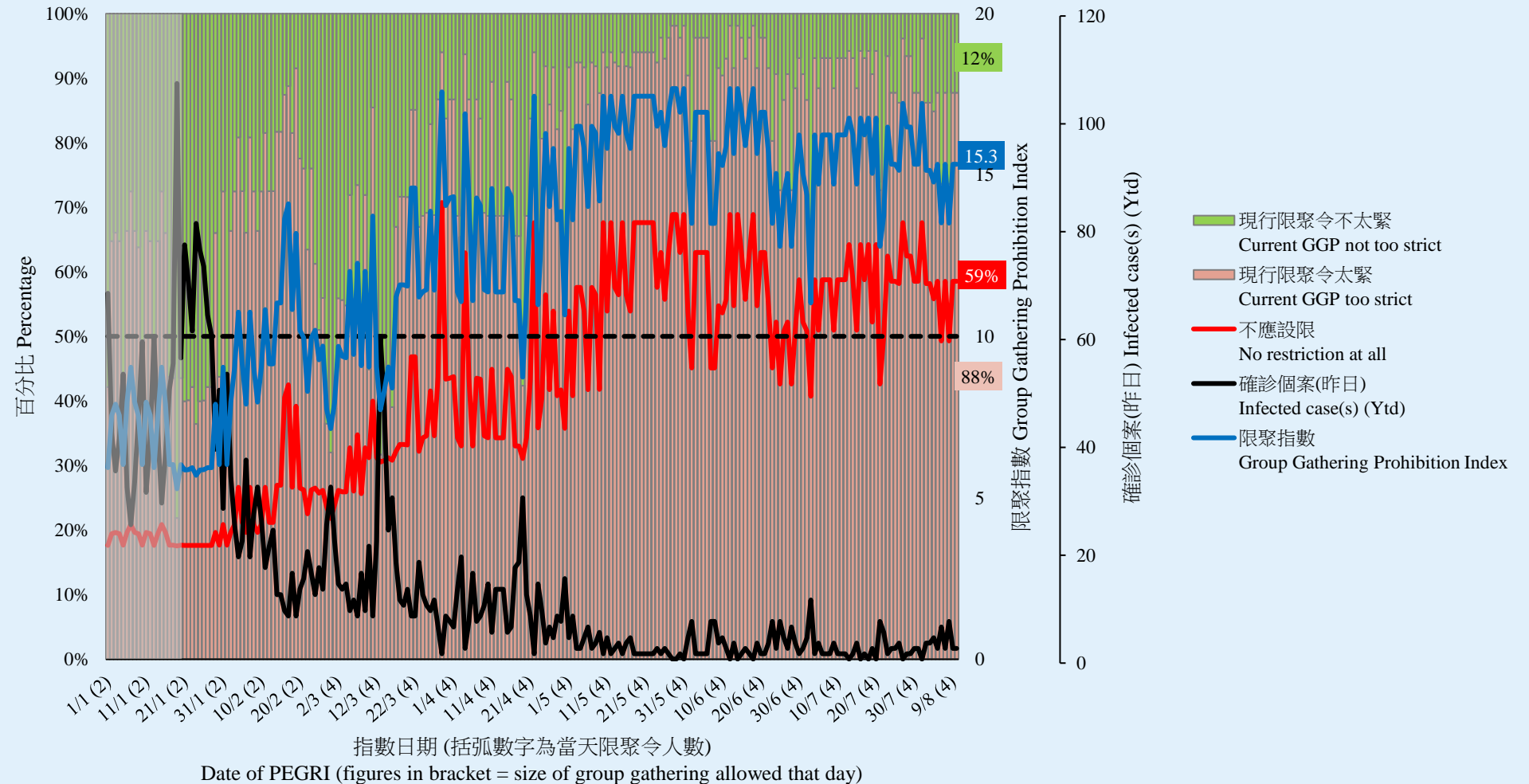
意見題目	Opinion Questions
<p>你認為香港應否無條件全面撤銷「限聚令」？</p> <ul style="list-style-type: none">▪ 應該無條件撤銷「限聚令」▪ 不應該，應視乎疫情而定▪ 不知道／很難說 <p>[追問沒有選擇應該“無條件撤銷「限聚令」”者] 你認為每天新增確診個案數應是多少，才適合將「限聚令」訂於2人？ 你認為每天新增確診個案數應是多少，才適合將「限聚令」訂於4人？ 你認為每天新增確診個案數應是多少，才適合將「限聚令」訂於8人？ 你認為每天新增確診個案數應是多少，才適合將「限聚令」訂於16人？ 你認為感染個案清零多少天後，限聚令應該全面撤銷？</p> <p>請於以下欄位列舉你認為合適的 [個案數 及 限聚人數] 組合……</p>	<p>Do you think the regulation prohibiting gatherings of more than a specific number of people in public places should be completely lifted unconditionally in Hong Kong?</p> <ul style="list-style-type: none">▪ Yes, the ban should be lifted unconditionally▪ No, it should depend on the epidemic situation▪ Don't know / hard to say <p>[For respondents NOT answering “Yes, the ban should be lifted unconditionally”] How many newly confirmed cases each day should there be before it would be appropriate to prohibit gatherings of more than 2 people? How many newly confirmed cases each day should there be before it would be appropriate to prohibit gatherings of more than 4 people? How many newly confirmed cases each day should there be before it would be appropriate to prohibit gatherings of more than 8 people? How many newly confirmed cases each day should there be before it would be appropriate to prohibit gatherings of more than 16 people? After how many days of zero infection do you think the group gathering ban should be lifted altogether?</p> <p>Please list combinations of [number of cases & number of people allowed in gatherings] that you think is appropriate in the field below:</p>

調查結果 - 限聚接受程度

Survey Result – Group Gathering Prohibition Acceptance Level

4

限聚接受程度 Group Gathering Prohibition Acceptance Level



限聚指數 - 分析評論

Group Gathering Prohibition Index – Commentary

5

獨立評論人潘麒智指出：「世界各地的疫苗似乎應對不了病毒的變種，疫情持續擴散。香港政府對疫情防控的對策已經變得僵化，認為現時並無條件大幅放寬社交距離措施，並謂第五波疫情隨時爆發，及預告會在8月內開始收緊B類餐飲處所員工的定期檢測規定，繼續將小商戶生計作賭注。長此下去，市民亦只能自求多福，每日戴好口罩，做好個人防護相信更勝政府安排。」

Independent commentator KC Poon observed, “Vaccines around the world seem unable to cope with the mutating virus, as the pandemic continues to spread. The Hong Kong government has become inflexible in its response to the pandemic, not ready to relax the social distancing measures significantly. It keeps saying that the fifth wave of pandemic outbreak will happen any time, and forecasts the tightening of the restrictions on Category B restaurants regarding virus tests for staffs in August, putting the livelihood of small business owners at stake. In the long run, people will have to rely on their own luck, to wear their own masks properly, and to rely on themselves more than on the government.”