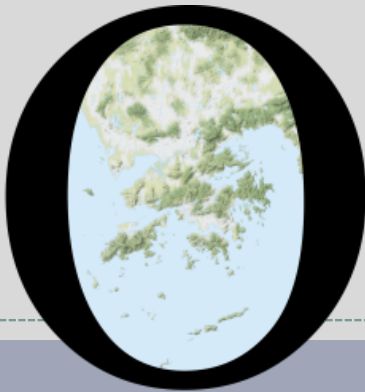


POP



HONG KONG PUBLIC OPINION PROGRAM

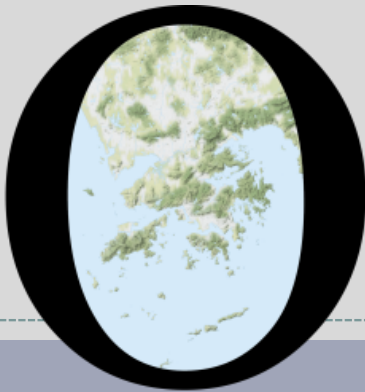
HONG KONG PUBLIC OPINION RESEARCH INSTITUTE

香港民意研究所 之 香港民意研究計劃

Latest Tracking Poll Results

September 14, 2021

POP



HONG KONG PUBLIC OPINION PROGRAM

HONG KONG PUBLIC OPINION RESEARCH INSTITUTE

香港民意研究所 之 香港民意研究計劃

Community Democracy Project -

Community Health Module

Latest Results

September 14, 2021

Contact Information - Community Health Module

3

	HKPOP Panel	
Date of survey	September 6, 3pm – September 13, 3pm	
Survey method	Online survey	
Target population	Hong Kong residents aged 12+	
	Representative Panel	Volunteer Panel
Total sample size	764	6,113
Response rate	8.7%	7.4%
Sampling error	Sampling error of percentages at +/-4% at 95% confidence level	Sampling error of percentages at +/-1% at 95% confidence level
Weighting method	The figures are rim-weighted according to 1) gender-age distribution of Hong Kong population and by District Councils population figures from Census and Statistics Department; 2) Voting results of District Councils Election from Registration and Electoral Office; 3) rating distribution of Chief Executive from regular tracking surveys.	

Survey Result - Community Health Module

4

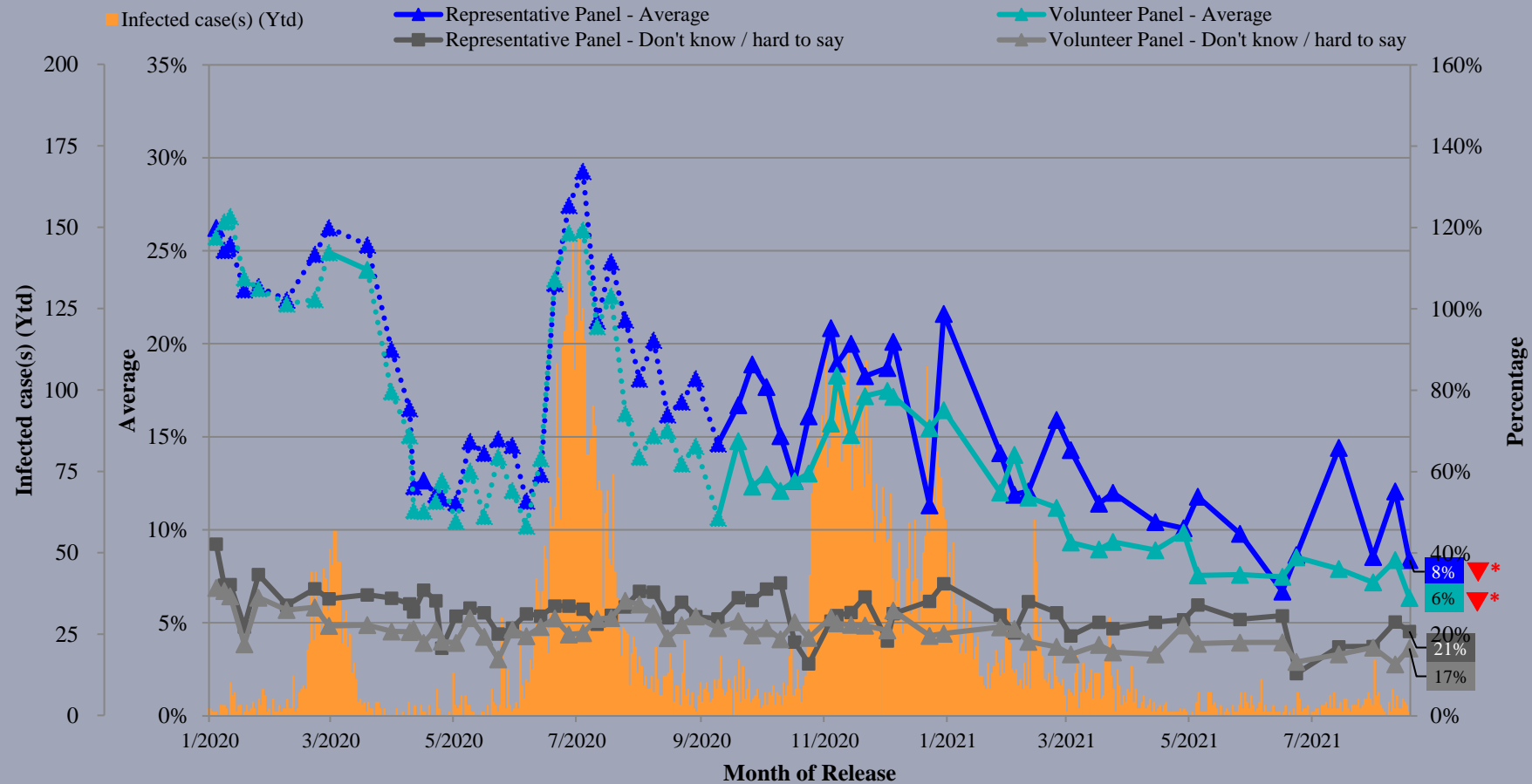
- **Latest survey period: 6-13/9/2021** (*Representative Panel N=761 Volunteer Panel N=6,094*)
- **Last survey period: 26/8-6/9/2021** (*Representative Panel N=507 Volunteer Panel N=4,184*)
- **Second last survey period: 9-26/8/2021** (*Representative Panel N=824 Volunteer Panel N=6,783*)

Opinion Question [^]		Representative Panel (N=761)		Volunteer Panel (N=6,094)	
		Don't know / hard to say	Average	Don't know / hard to say	Average
Q1 How likely do you think it is that you will contract novel coronavirus pneumonia over the next one month? [Logarithmic Scale]	Latest	21%	8% ▼*	17%	6% ▼*
	Last	23%	12%	13%	8%
	Second Last	17%	9%	17%	7%

[^] Answer options included: 0-10 rating scale, others and don't know / hard to say. Answer options changed from linear scale to logarithmic scale since Oct 2020. * Significant change

Survey Result - Community Health Module

Assessment of the public's expected chance of COVID-19 infection



^ Answer options included: 0-10 rating scale, others and don't know / hard to say. Answer options changed from linear scale to logarithmic scale since Oct 2020.

* Significant change

Survey Result - Community Health Module

6

- **Latest survey period: 6-13/9/2021** (Representative Panel N=761 Volunteer Panel N=6,105)
- **Last survey period: 26/8-6/9/2021** (Representative Panel N=508 Volunteer Panel N=4,185)
- **Second last survey period: 9-26/8/2021** (Representative Panel N=826 Volunteer Panel N=6,781)

Opinion Question [^]		Representative Panel (N=761)				Volunteer Panel (N=6,105)			
		Satisfied	Half-half	Dissatisfied	Mean [†]	Satisfied	Half-half	Dissatisfied	Mean [†]
Q2 How satisfied or dissatisfied are you with the government's performance in handling novel coronavirus pneumonia?	Latest	29%	20% ▼*	50% ▲*	2.5	32% ▼*	8% ▲*	59%	2.4
	Last	26%	30%	41%	2.5	34%	6%	59%	2.4
	Second Last	32%	25%	43%	2.6	30%	12%	57%	2.4

[^] Answer options included: very much satisfied, somewhat satisfied, half-half, somewhat dissatisfied, very much dissatisfied and don't know / hard to say

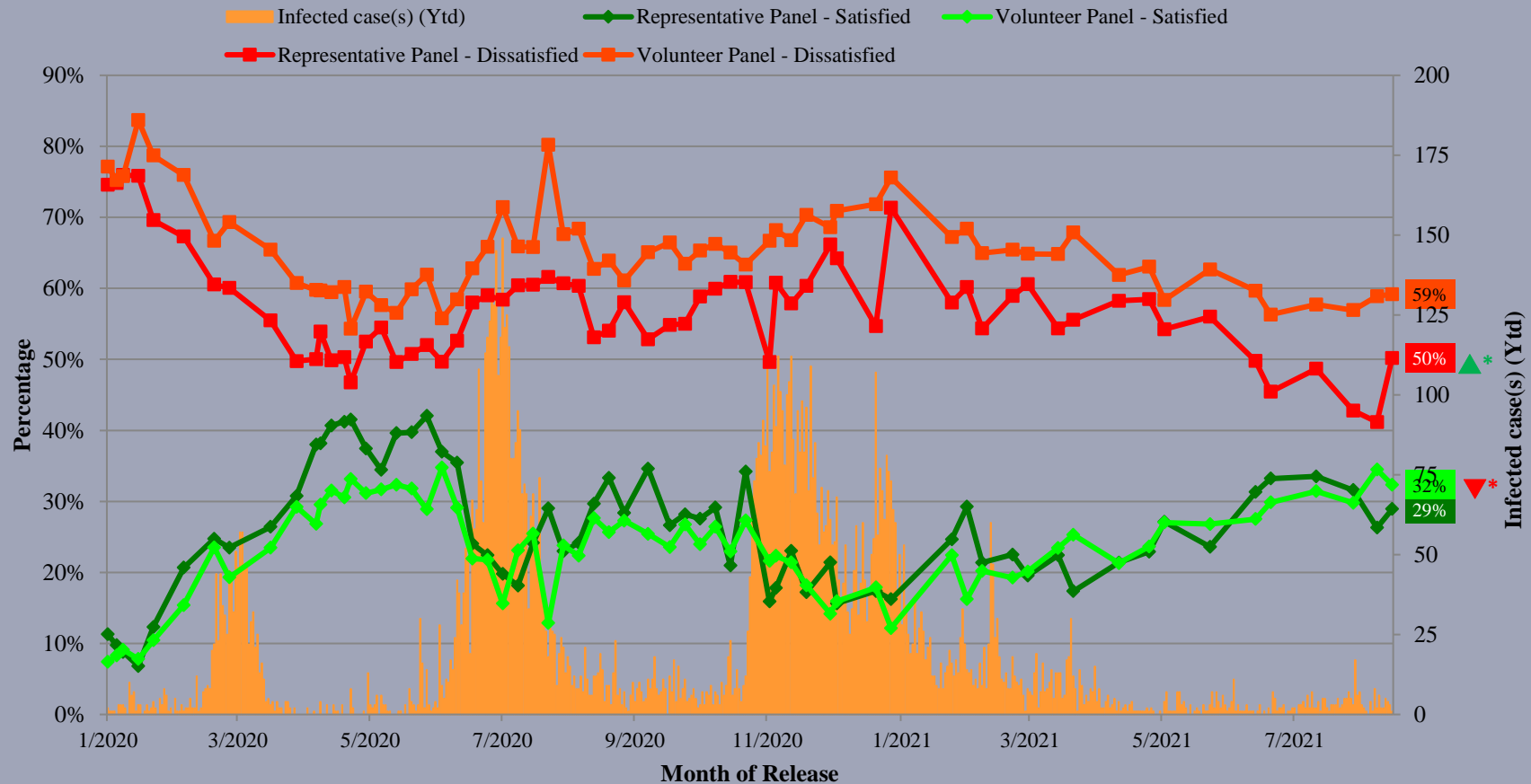
[†] The mean value is calculated by quantifying all individual responses into 1, 2, 3, 4, 5 marks according to their degree of positive level, where 1 is the lowest and 5 the highest, and then calculate the sample mean.

* Significant change

Survey Result - Community Health Module

7

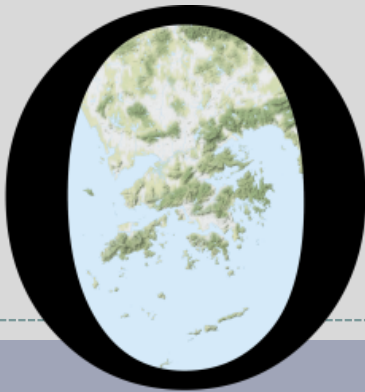
Appraisal of HK Government's performance in handling novel coronavirus pneumonia



^ Answer options included: very much satisfied, somewhat satisfied, half-half, somewhat dissatisfied, very much dissatisfied and don't know / hard to say

* Significant change

POP



HONG KONG PUBLIC OPINION PROGRAM

HONG KONG PUBLIC OPINION RESEARCH INSTITUTE

香港民意研究所 之 香港民意研究計劃

限聚指數

Group Gathering Prohibition Index

14/9/2021

樣本資料 - 限聚指數基準調查

Contact Information - Group Gathering Prohibition Index Benchmark Survey

9

	香港民研意見群組成員 HKPOP Panel
調查日期 Survey date	16/8 15:00 – 23/8 15:00
調查方法 Survey method	以電郵接觸群組成員，並於網上完成調查 Online survey
訪問對象 Target population	十二歲或以上的香港市民 Hong Kong residents aged 12+
總成功樣本 Total sample size	7,456
回應比率 Response rate	8.1%
抽樣誤差 Sampling error	95% 置信水平，百分比誤差 +/-1% Sampling error of percentages at +/-1% at 95% confidence level
加權方法 Weighting method	按照1) 政府統計處提供的全港人口年齡及性別分佈統計數字、各區議會人口數字； 2) 選舉事務處提供的區議會選舉結果；3) 常規調查中的特首評分分佈數字，以 「反覆多重加權法」作出調整。 The figures are rim-weighted according to 1) gender-age distribution of Hong Kong population and by District Councils population figures from Census and Statistics Department; 2) Voting results of District Councils Election from Registration and Electoral Office; 3) rating distribution of Chief Executive from regular tracking surveys.

限聚指數

Group Gathering Prohibition Index

10

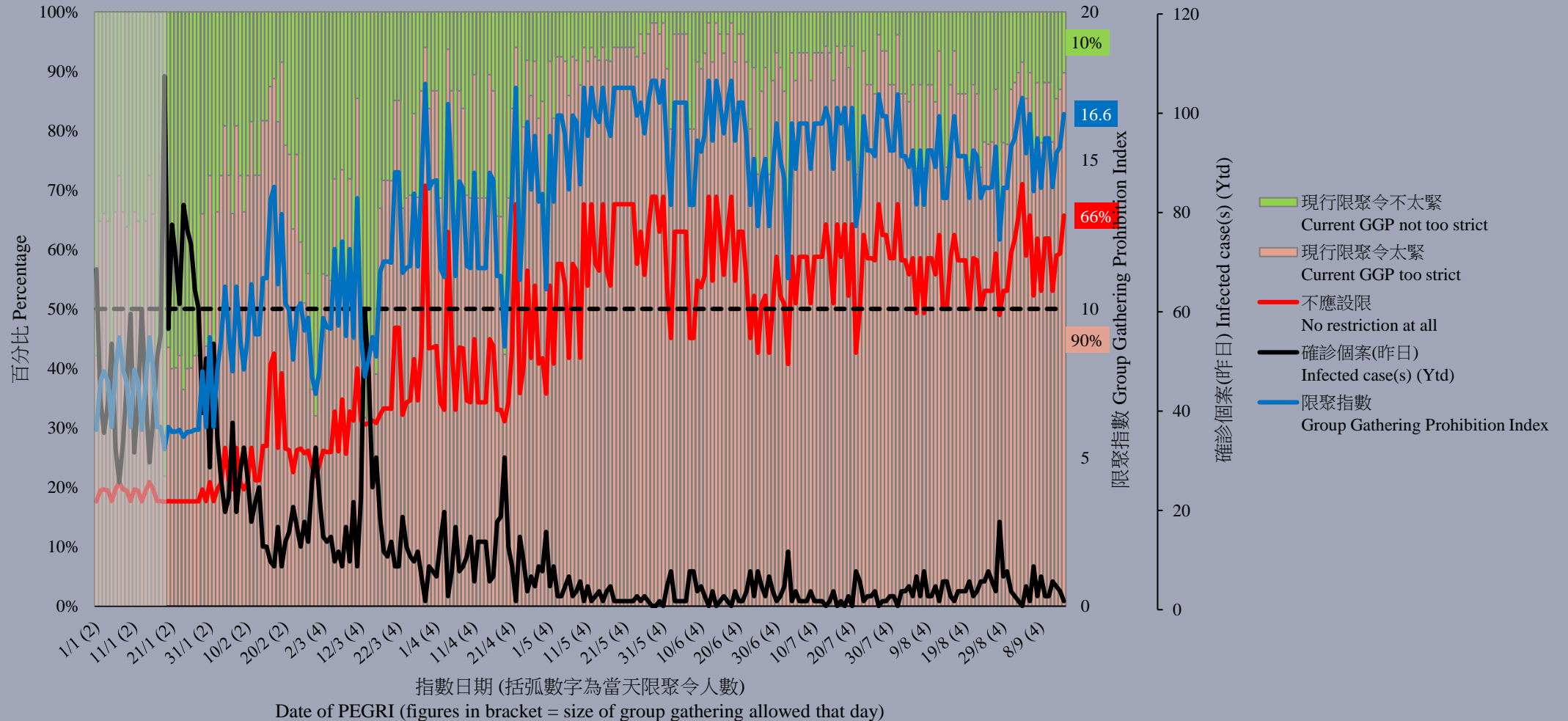
- 最新調查日期 **Latest survey date: 16-23/8/2021 (N=7,456)**
- 上次調查日期 **Last survey date: 16-21/7/2021 (N=5,636)**
- 上上次調查日期 **Second last survey date: 18-23/6/2021 (N=6,158)**

意見題目	Opinion Questions
<p>你認為香港應否無條件全面撤銷「限聚令」？</p> <ul style="list-style-type: none">▪ 應該無條件撤銷「限聚令」▪ 不應該，應視乎疫情而定▪ 不知道／很難說 <p>[追問沒有選擇應該“無條件撤銷「限聚令」”者]</p> <p>你認為每天新增確診個案數應是多少，才適合將「限聚令」訂於2人？</p> <p>你認為每天新增確診個案數應是多少，才適合將「限聚令」訂於4人？</p> <p>你認為每天新增確診個案數應是多少，才適合將「限聚令」訂於8人？</p> <p>你認為每天新增確診個案數應是多少，才適合將「限聚令」訂於16人？</p> <p>你認為感染個案清零多少天後，限聚令應該全面撤銷？</p> <p>請於以下欄位列舉你認為合適的 [個案數 及 限聚人數] 組合.....</p>	<p>Do you think the regulation prohibiting gatherings of more than a specific number of people in public places should be completely lifted unconditionally in Hong Kong?</p> <ul style="list-style-type: none">▪ Yes, the ban should be lifted unconditionally▪ No, it should depend on the epidemic situation▪ Don't know / hard to say <p>[For respondents NOT answering “Yes, the ban should be lifted unconditionally”]</p> <p>How many newly confirmed cases each day should there be before it would be appropriate to prohibit gatherings of more than 2 people?</p> <p>How many newly confirmed cases each day should there be before it would be appropriate to prohibit gatherings of more than 4 people?</p> <p>How many newly confirmed cases each day should there be before it would be appropriate to prohibit gatherings of more than 8 people?</p> <p>How many newly confirmed cases each day should there be before it would be appropriate to prohibit gatherings of more than 16 people?</p> <p>After how many days of zero infection do you think the group gathering ban should be lifted altogether?</p> <p>Please list combinations of [number of cases & number of people allowed in gatherings] that you think is appropriate in the field below:</p>

調查結果 - 限聚接受程度

Survey Result – Group Gathering Prohibition Acceptance Level

限聚接受程度 Group Gathering Prohibition Acceptance Level

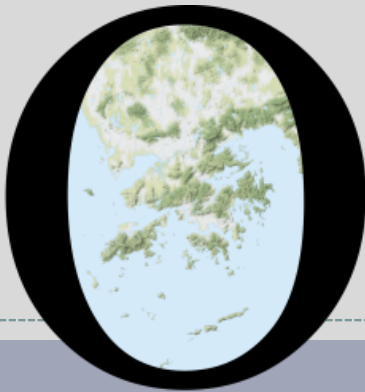


限聚指數 - 分析評論 Group Gathering Prohibition Index – Commentary

獨立評論人潘麒智指出：「本地疫情持續平穩，昨日只有一宗輸入個案，而沒有本地源頭不明個案。不過，卻有愈來愈多學校爆發流感。由於病徵與新冠肺炎相似，政府或需在策略上再作調整。事實上，疫情與流感已經成為地球風土病，『與病毒共存』根本是唯一出路，建議港府可早着先機，勿再猶豫。」

Independent commentator KC Poon observed, “Hong Kong’s situation continues to be stable, with only one imported case yesterday without any local case of unknown origin. However, more and more schools are experiencing influenza outbreaks, and since the symptoms are similar to those of COVID-19, the government may need to adjust its strategy. In fact, both COVID-19 and influenza have become endemic diseases of the earth so ‘coexisting with the virus’ is the only way out. The government should better move early.”

POP



HONG KONG PUBLIC OPINION PROGRAM

HONG KONG PUBLIC OPINION RESEARCH INSTITUTE

香港民意研究所 之 香港民意研究計劃

Latest Tracking Poll Results

September 14, 2021

Contact Information

14

- Date of survey: 6-10/9/2021
- Survey method: Random telephone survey conducted by real interviewers
- Target population: Cantonese-speaking Hong Kong residents aged 18 or above
- Sample size: 1,000 (including 500 landline and 500 mobile samples)
- Effective response rate: 44.2%
- Sampling error: Sampling error of percentages not more than +/-4%, that of net values not more than +/-7% and that of ratings not more than +/-2.9 at 95% conf. level
- Weighting method: Rim-weighted according to figures provided by the Census and Statistics Department. The gender-age distribution of the Hong Kong population came from “Mid-year population for 2020”, while the educational attainment (highest level attended) distribution and economic activity status distribution came from “Women and Men in Hong Kong - Key Statistics (2020 Edition)”.

Survey Topic

15

- Popularity of Chief Executive
- Popularity of Principal Officials

Survey Result - Popularity of Chief Executive

● Popularity of Chief Executive

		20-26/8/2021	6-10/9/2021	Change	Record
CE Carrie Lam	Rating	33.8	35.6	▲1.8	Record high since Jun. 2019
	Vote of confidence	20%	24%	▲4% *	Record high since Aug. 2020
	Vote of no confidence	68%	65%	▼3%	Record low since Jun. 2019
	Net approval rate	-48%	-41%	▲7%	Record high since Jul. 2019

- Our latest survey shows that the popularity rating of CE Carrie Lam is 35.6 marks. It has not changed much from half a month ago, but has registered a **record high** since early June 2019, with 33% of respondents giving her 0 mark. Her latest approval rate is 24%, disapproval rate 65%, giving a net popularity of negative 41 percentage points, which has increased by 7 percentage points compared to half a month ago, but the change has not gone beyond sampling error.

* Significant change

Survey Topic

17

- Popularity of Chief Executive
- Popularity of Principal Officials

Survey Result - Popularity of Secretaries of Departments

18

• Secretaries of Departments

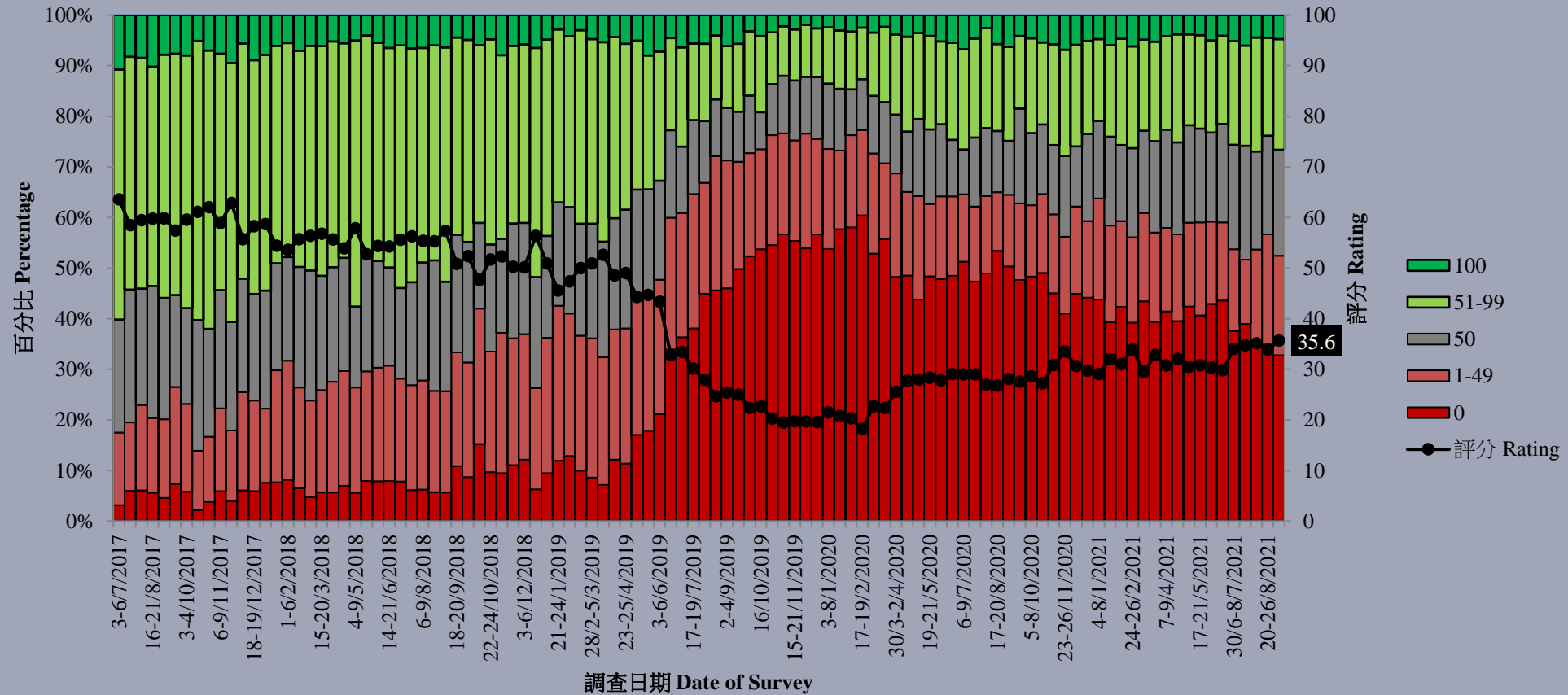
		9-12/8/2021	6-10/9/2021	Change	Record
Chief Secretary for Administration John Lee	Rating	35.3	37.5	▲2.2	Record high since Jul. 2021
	Net approval rate	-11%	-11%	--	--
Financial Secretary Paul Chan	Rating	41.3	41.9	▲0.6	Record high since Jul. 2021
	Net approval rate	4%	-5%	▼8%	Record low since Jun. 2021
Secretary for Justice Teresa Cheng	Rating	27.7	28.3	▲0.6	Record high since Jun. 2019
	Net approval rate	-39%	-35%	▲4%	Record high since Apr. 2019

- As for the Secretaries of Departments, the support rating of CS John Lee is 37.5 marks. His net popularity of negative 11 percentage points. The support rating of FS Paul Chan is 41.9 marks. His net popularity of negative 5 percentage points. As for SJ Teresa Cheng, her support rating is 28.3 marks, registering a **record high** since early June 2019. Her net popularity of negative 35 percentage points, also registered a **record high** since April 2019.

Survey Result - Popularity of Chief Executive

19

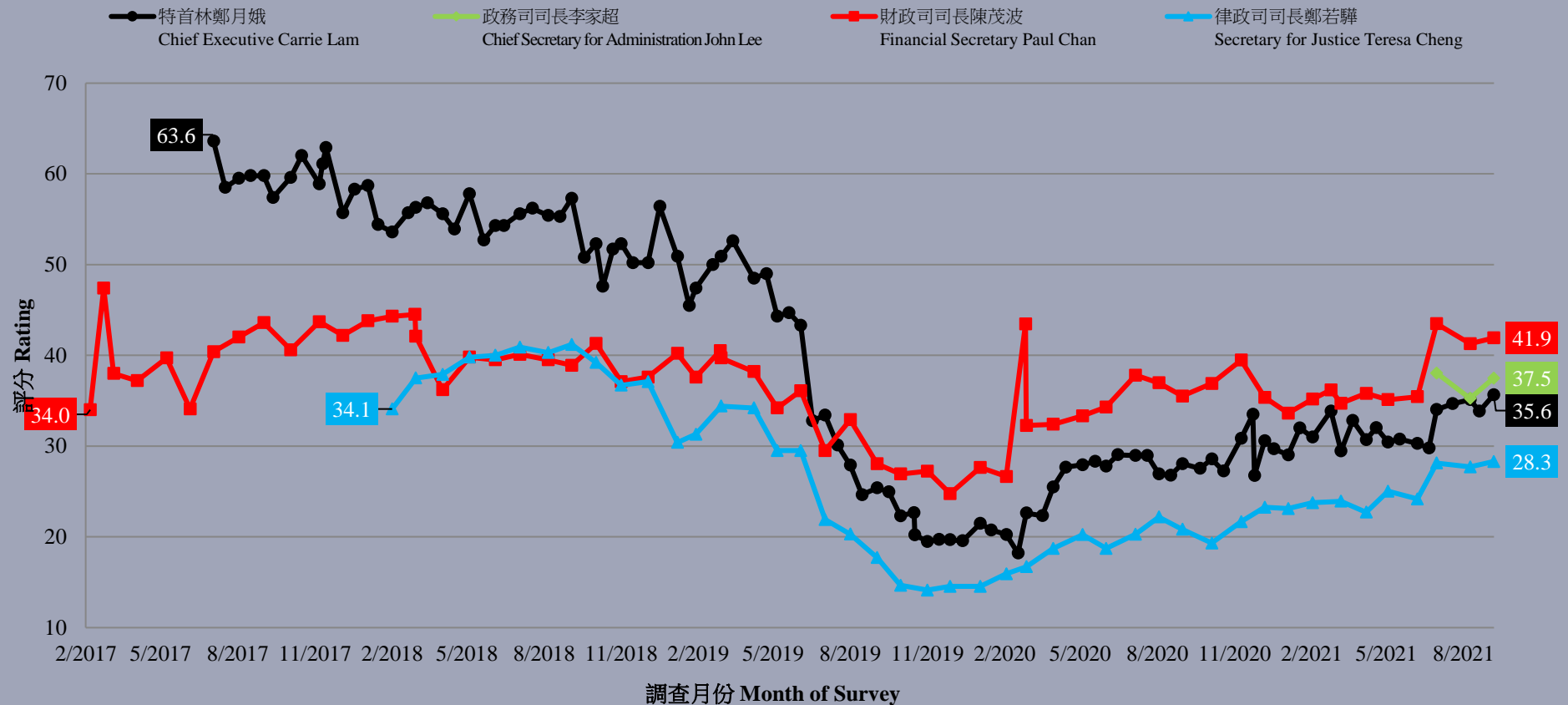
特首林鄭月娥評分 (按次計算)
Rating for Chief Executive Carrie Lam (Per Poll)
(7/2017 – 9/2021)



Survey Result - Popularity of CE and Secretaries of Departments

23

特首及各司長評分 - 綜合圖表 (按次計算)
Ratings of Chief Executive and Secretaries of Departments - Combined (per poll)
(2/2017 - 9/2021)

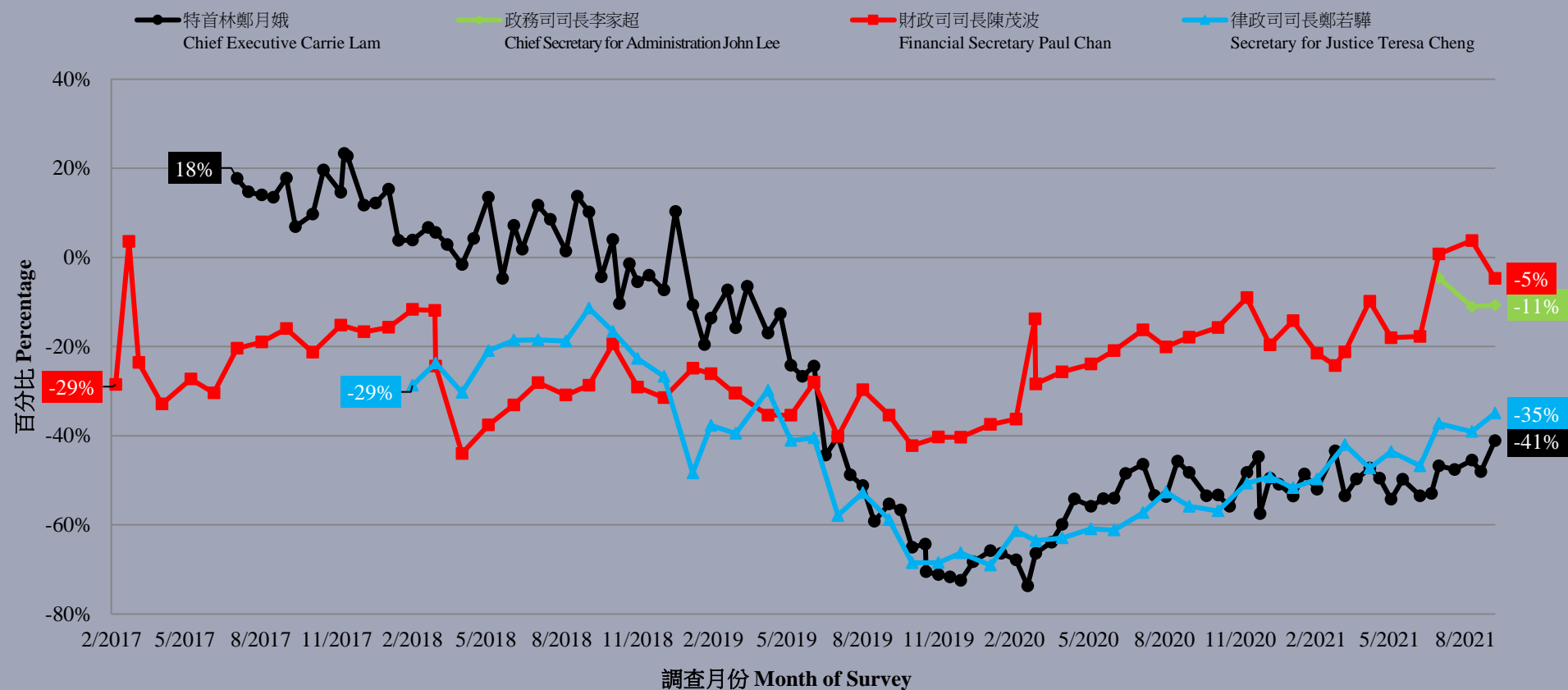


Survey Result - Popularity of CE and Secretaries of Departments

24

特首及各司長支持率淨值 - 綜合圖表 (按次計算)

Net approval rates of CE and Secretaries of Departments - Combined (per poll) (2/2017 – 9/2021)



Survey Result - Popularity of Directors of Bureaux

25

• Directors of Bureaux - Net approval rate

	30/6-8/7/2021	6-10/9/2021	Change	Record
Secretary for the Environment Wong Kam-sing	7%	14%	▲7%	Record high since Jul. 2019
Secretary for Labour and Welfare Law Chi-kwong	3%	8%	▲5%	Record high since Jul. 2019
Secretary for Innovation and Technology Alfred Sit	6%	7%	▲1%	All-time record high since May 2020
Secretary for Financial Services and the Treasury Christopher Hui	5%	7%	▲2%	All-time record high since May 2020
Secretary for Commerce and Economic Development Edward Yau	3%	6%	▲3%	Record high since Sept. 2019
Secretary for Transport and Housing Frank Chan	-4%	5%	▲9% *	Record high since May 2018
Secretary for Development Michael Wong	8%	5%	▼3%	Record low since May 2021
Secretary for the Civil Service Patrick Nip	1%	3%	▲2%	All-time record high since May 2020
Secretary for Security Chris Tang	2%	2%	--	--
Secretary for Home Affairs Caspar Tsui	-4%	<1%	▲5%	All-time record high since May 2020
Secretary for Constitutional and Mainland Affairs Erick Tsang	-2%	-2%	▼1%	Record low since May 2021
Secretary for Food and Health Sophia Chan	-8%	-13%	▼5%	Record low since May 2021
Secretary for Education Kevin Yeung	-29%	-27%	▲2%	Record high since Aug. 2019

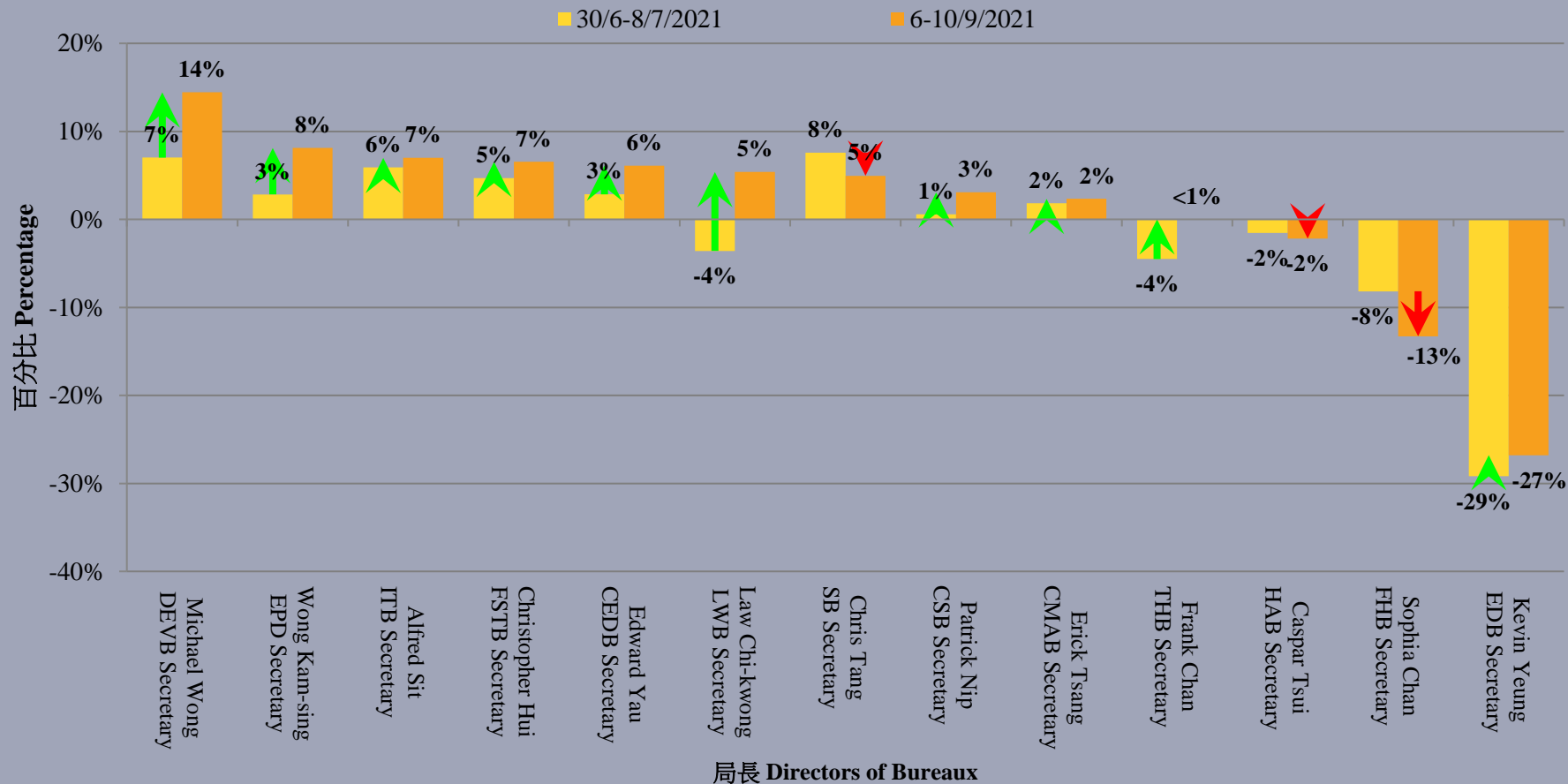
* Significant change

Survey Result - Popularity of Directors of Bureaux

26

各局長假想投票結果 (支持率淨值) - 綜合圖表

Hypothetical Voting of Directors of Bureau (Net Approval Rate) - Combined Charts



Survey Result - Popularity of Directors of Bureaux

27

● Directors of Bureaux

- As for the Directors of Bureaux, **10 out of 13 have got positive net approval rates**, ranked from high to low are Secretary for the Environment Wong Kam-sing, Secretary for Labour and Welfare Law Chi-kwong, Secretary for Innovation and Technology Alfred Sit, Secretary for Financial Services and the Treasury Christopher Hui, Secretary for Commerce and Economic Development Edward Yau, Secretary for Transport and Housing Frank Chan, Secretary for Development Michael Wong, Secretary for the Civil Service Patrick Nip, Secretary for Security Chris Tang and Secretary for Home Affairs Caspar Tsui.
- **The 11th to 13th positions who have got negative net approval rates** go to Secretary for Constitutional and Mainland Affairs Erick Tsang, Secretary for Food and Health Sophia Chan and Secretary for Education Kevin Yeung.
- **Compared to two months ago, the net approval rates of 9 Directors have gone up, 3 have gone down, while 1 remains unchanged**, but only that of Frank Chan has changed beyond sampling error, also registering a **record high** since May 2018. Meanwhile, those of Alfred Sit, Christopher Hui, Patrick Nip and Caspar Tsui have registered **record highs** since they took office in May 2020.