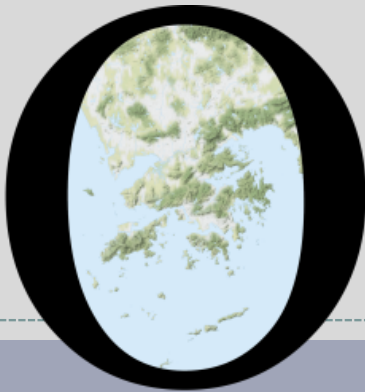


# POP



---

HONG KONG PUBLIC OPINION PROGRAM

HONG KONG PUBLIC OPINION RESEARCH INSTITUTE

香港民意研究所 之 香港民意研究計劃

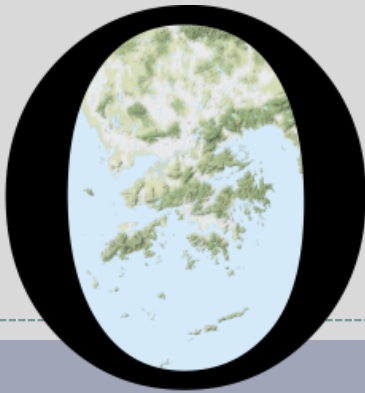
---

**“We Hongkongers” Panel Survey**

**Latest Results**

**October 29, 2021**

# POP



---

HONG KONG PUBLIC OPINION PROGRAM

HONG KONG PUBLIC OPINION RESEARCH INSTITUTE

香港民意研究所 之 香港民意研究計劃

---

**限聚指數**

**Group Gathering Prohibition Index**

**29/10/2021**

# 樣本資料 - 限聚指數基準調查

## Contact Information - Group Gathering Prohibition Index Benchmark Survey

3

	香港民研意見群組成員 HKPOP Panel
調查日期 Survey date	18/10 15:00 – 25/10 15:00
調查方法 Survey method	以電郵接觸群組成員，並於網上完成調查 Online survey
訪問對象 Target population	十二歲或以上的香港市民 Hong Kong residents aged 12+
總成功樣本 Total sample size	5,974
回應比率 Response rate	6.6%
抽樣誤差 Sampling error	95% 置信水平，百分比誤差 +/-1% Sampling error of percentages at +/-1% at 95% confidence level
加權方法 Weighting method	按照1) 政府統計處提供的全港人口年齡及性別分佈統計數字、各區議會人口數字；2) 選舉事務處提供的區議會選舉結果；3) 常規調查中的特首評分分佈數字，以「反覆多重加權法」作出調整。 The figures are rim-weighted according to 1) gender-age distribution of Hong Kong population and by District Councils population figures from Census and Statistics Department; 2) Voting results of District Councils Election from Registration and Electoral Office; 3) rating distribution of Chief Executive from regular tracking surveys.

# 限聚指數

## Group Gathering Prohibition Index

4

- **最新調查日期 Latest survey date: 18-25/10/2021 (N=5,974)**
- **上次調查日期 Last survey date: 13-20/9/2021 (N=6,210)**
- **上上次調查日期 Second last survey date: 16-23/8/2021 (N=7,456)**

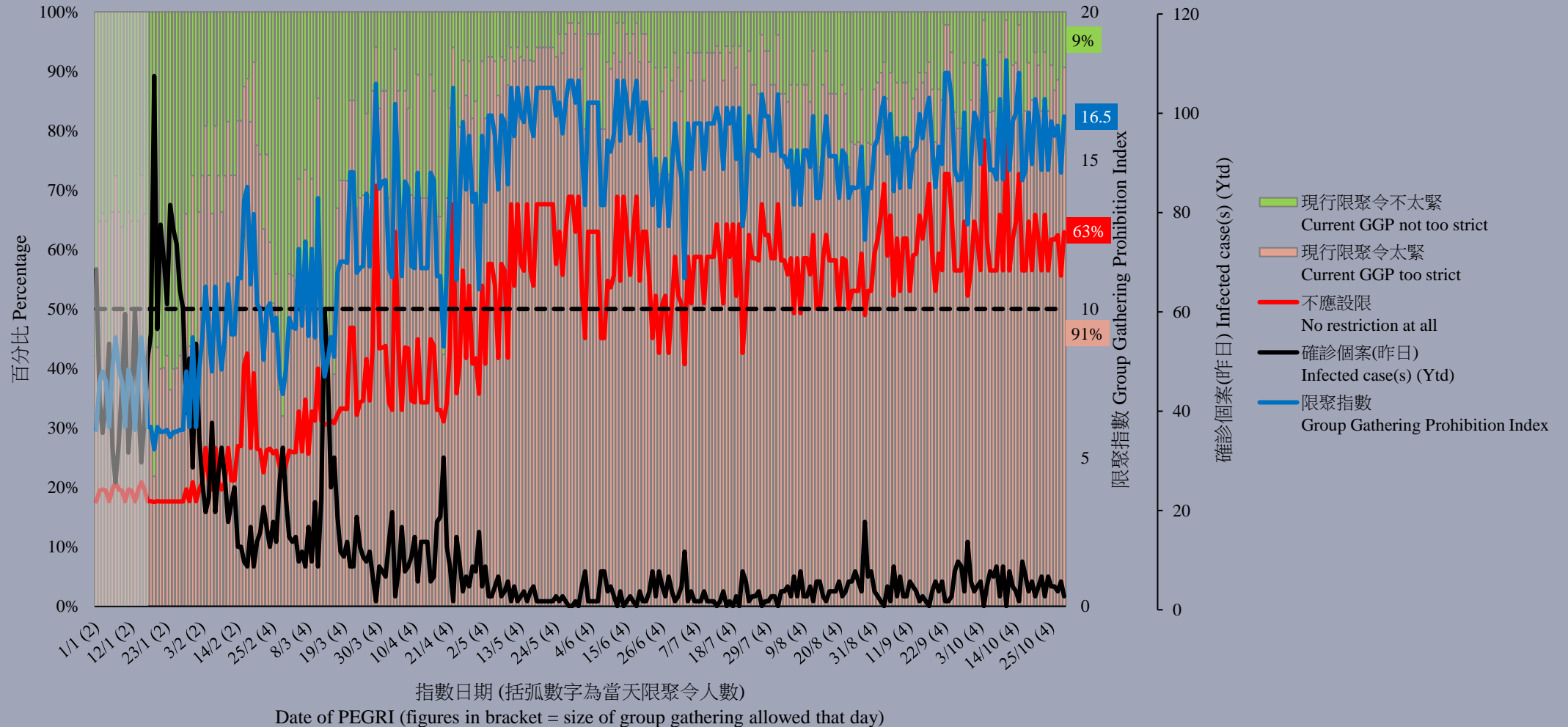
意見題目	Opinion Questions
<p>你認為香港應否無條件全面撤銷「限聚令」？</p> <ul style="list-style-type: none"><li>▪ 應該無條件撤銷「限聚令」</li><li>▪ 不應該，應視乎疫情而定</li><li>▪ 不知道／很難說</li></ul> <p>[追問沒有選擇應該“無條件撤銷「限聚令」”者] 你認為每天新增確診個案數應是多少，才適合將「限聚令」訂於2人？ 你認為每天新增確診個案數應是多少，才適合將「限聚令」訂於4人？ 你認為每天新增確診個案數應是多少，才適合將「限聚令」訂於8人？ 你認為每天新增確診個案數應是多少，才適合將「限聚令」訂於16人？ 你認為感染個案清零多少天後，限聚令應該全面撤銷？</p> <p>請於以下欄位列舉你認為合適的 [個案數 及 限聚人數] 組合……</p>	<p>Do you think the regulation prohibiting gatherings of more than a specific number of people in public places should be completely lifted unconditionally in Hong Kong?</p> <ul style="list-style-type: none"><li>▪ Yes, the ban should be lifted unconditionally</li><li>▪ No, it should depend on the epidemic situation</li><li>▪ Don't know / hard to say</li></ul> <p>[For respondents NOT answering “Yes, the ban should be lifted unconditionally”] How many newly confirmed cases each day should there be before it would be appropriate to prohibit gatherings of more than 2 people? How many newly confirmed cases each day should there be before it would be appropriate to prohibit gatherings of more than 4 people? How many newly confirmed cases each day should there be before it would be appropriate to prohibit gatherings of more than 8 people? How many newly confirmed cases each day should there be before it would be appropriate to prohibit gatherings of more than 16 people? After how many days of zero infection do you think the group gathering ban should be lifted altogether?</p> <p>Please list combinations of [number of cases &amp; number of people allowed in gatherings] that you think is appropriate in the field below:</p>

# 調查結果 - 限聚接受程度

## Survey Result – Group Gathering Prohibition Acceptance Level

5

限聚接受程度 Group Gathering Prohibition Acceptance Level



# 限聚指數 - 分析評論

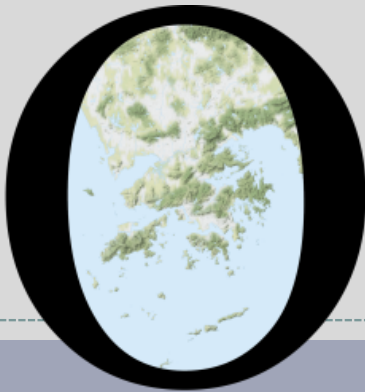
## Group Gathering Prohibition Index – Commentary

6

民生大聯盟發言人章彤輝博士指出，「日前港府延續現行社交距離措施維持14日，民意對4人限聚的門檻也延續了反對的主流態度。食肆對進一步放寬餐宴人數一直有期望，但看來未來一段時間，不可能有大幅度的改變了，業界唯有繼續堅守。旅遊界別無論僱主或僱員團體都發聲要求港府盡快達成免檢通關，甚至民間也對政府的慢動作有強烈的指責，市民唯有一面埋單，一面抱怨。」

**Dr Tung-fai Cheung, Spokesman of Alliance of Revitalizing Economy and Livelihood, observed, “Recently Hong Kong government extended the current social distancing measures for 14 days, and the mainstream public views continue to oppose the 4-person group gathering ban. Restaurants have been expecting a further relaxation of the number of people at the banquet, but it seems unlikely that there will be any drastic changes in the coming period, so the industry can only continue to do their best. Both employers and employee groups in the tourism sector have expressed their demand for the government to achieve the quarantine-free border crossing as soon as possible, and even the public has strong complaints about the government’s sluggish action. The only way for the public to pay the bill and complain at the same time.”**

# POP



---

HONG KONG PUBLIC OPINION PROGRAM

HONG KONG PUBLIC OPINION RESEARCH INSTITUTE

香港民意研究所 之 香港民意研究計劃

---

**“We Hongkongers” Panel Survey**

**Latest Results**

**October 29, 2021**

# Contact Information - “We Hongkongers” Panel Survey

8

	<b>HKPOP Panel</b>
Date of survey	October 25, 3pm – October 28, 3pm
Survey method	Online survey
Target population	Hong Kong residents aged 12+
Total sample size	5,713
Response rate	6.4%
Sampling error	Sampling error of percentages at +/-1% at 95% confidence level
Weighting method	The figures are rim-weighted according to 1) gender-age distribution, educational attainment (highest level attended) distribution, economic activity status distribution of Hong Kong population and by District Councils population figures from Census and Statistics Department; 2) Voting results of District Councils Election from Registration and Electoral Office; 3) rating distribution of Chief Executive from regular tracking surveys.



# Survey Result - “We Hongkongers” Panel Survey

9

- Latest survey period: 25-28/10/2021
- **Question: Q1 How much do you support or oppose the government in .....? [Question order to be randomized by computer]**

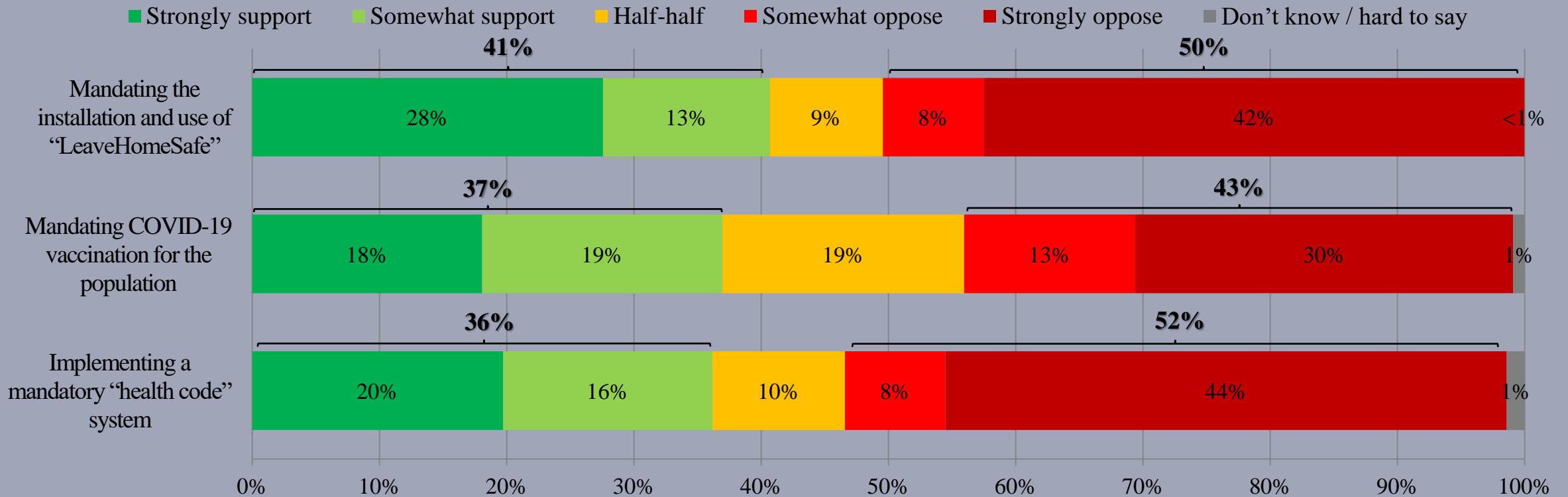
Combined <sup>^</sup>	Strongly support	Somewhat support	Half-half	Somewhat oppose	Strongly oppose	Don't know / hard to say	Mean <sup>†</sup>
Mandating the installation and use of “ <b>LeaveHomeSafe</b> ”	28%	13%	9%	8%	42%	<1%	2.8
Mandating <b>COVID-19 vaccination</b> for the population	18%	19%	19%	13%	30%	1%	2.8
Implementing a mandatory “ <b>health code</b> ” system	20%	16%	10%	8%	44%	1%	2.6

<sup>^</sup> The aggregated figures come from adjusting the by-group weighted figures using ratio of “pan-democratic” vs “non-pan-democratic” collected in regular tracking survey.

<sup>†</sup> The mean value is calculated by quantifying all individual responses into 1, 2, 3, 4, 5 marks according to their degree of support level, where 1 is the lowest and 5 the highest, and then calculate the sample mean.

# Survey Result - “We Hongkongers” Panel Survey

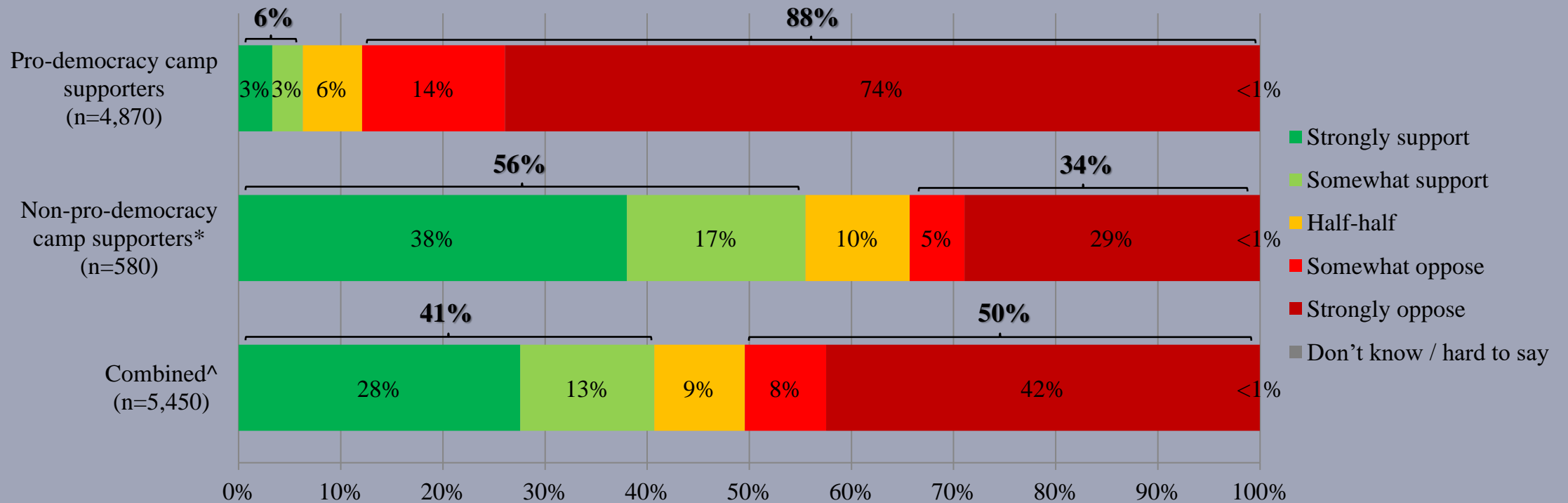
- **Latest survey period: 25-28/10/2021**
- **Question: Q1 How much do you support or oppose the government in .....? [Question order to be randomized by computer]**



^ The aggregated figures come from adjusting the by-group weighted figures using ratio of “pan-democratic” vs “non-pan-democratic” collected in regular tracking survey.

# Survey Result - “We Hongkongers” Panel Survey

- Latest survey period: 25-28/10/2021
- Question: Q1a How much do you support or oppose the government in mandating the installation and use of “LeaveHomeSafe”?

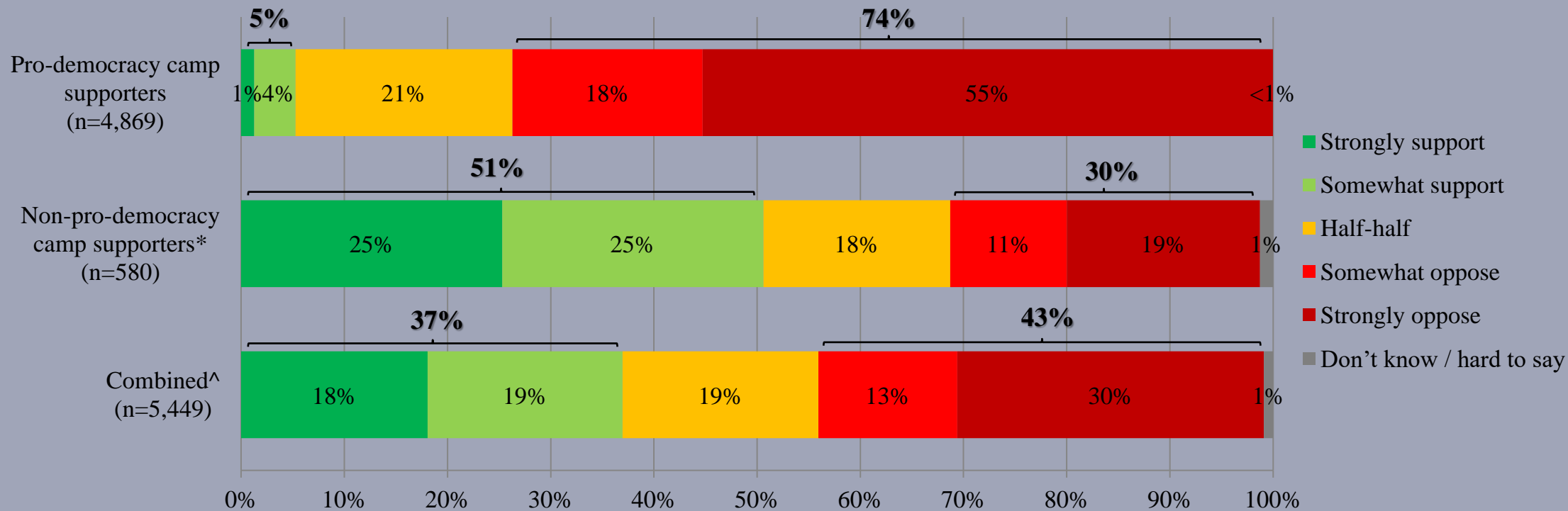


\* Include: pro-establishment camp supporters, centrist supporters, no political inclination / politically neutral / do not belong to any camp

^ The aggregated figures come from adjusting the by-group weighted figures using ratio of “pan-democratic” vs “non-pan-democratic” collected in regular tracking survey.

# Survey Result - “We Hongkongers” Panel Survey

- Latest survey period: 25-28/10/2021
- Question: Q1c How much do you support or oppose the government in mandating COVID-19 vaccination for the population?

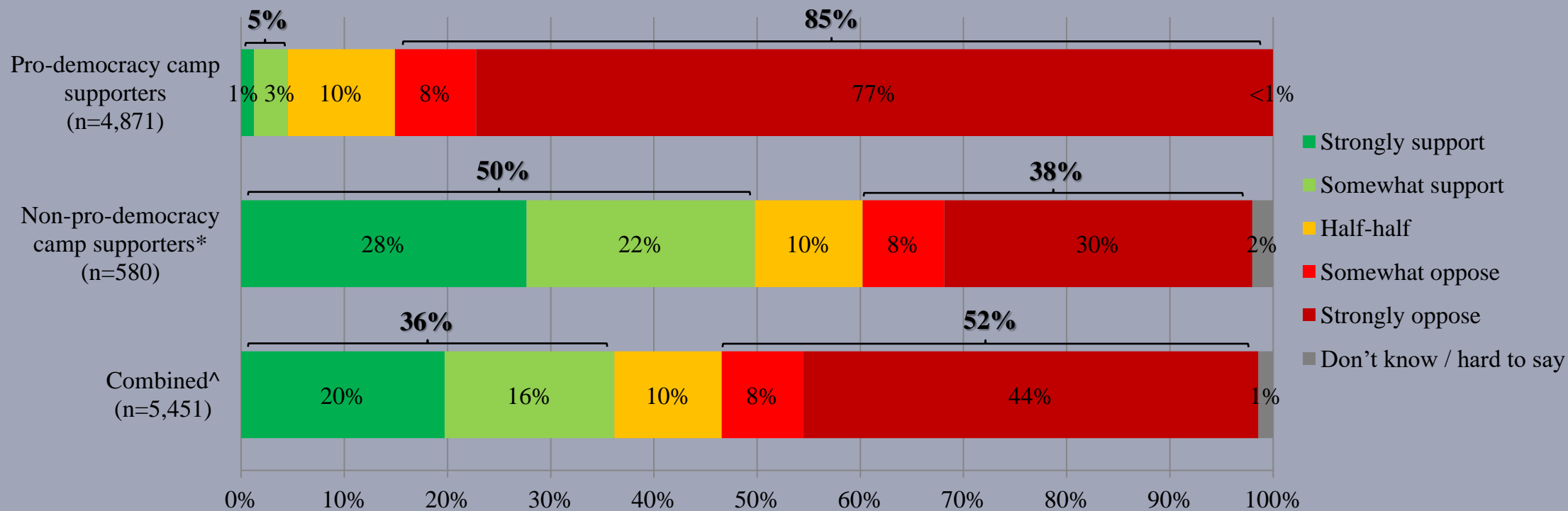


\* Include: pro-establishment camp supporters, centrist supporters, no political inclination / politically neutral / do not belong to any camp

^ The aggregated figures come from adjusting the by-group weighted figures using ratio of “pan-democratic” vs “non-pan-democratic” collected in regular tracking survey.

# Survey Result - “We Hongkongers” Panel Survey

- Latest survey period: 25-28/10/2021
- Question: Q1b How much do you support or oppose the government in implementing a mandatory “health code” system?



\* Include: pro-establishment camp supporters, centrist supporters, no political inclination / politically neutral / do not belong to any camp

^ The aggregated figures come from adjusting the by-group weighted figures using ratio of “pan-democratic” vs “non-pan-democratic” collected in regular tracking survey.