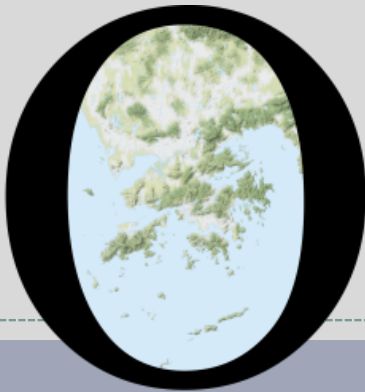


POP



HONG KONG PUBLIC OPINION PROGRAM

HONG KONG PUBLIC OPINION RESEARCH INSTITUTE

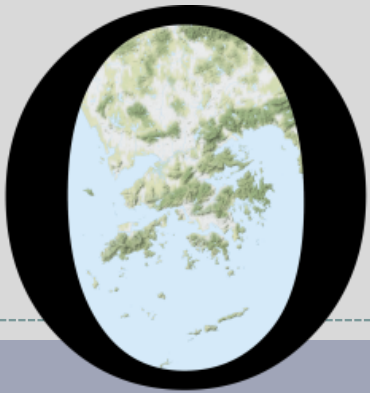
香港民意研究所 之 香港民意研究計劃

“We Hongkongers” Panel Survey

Latest Results

November 19, 2021

POP



HONG KONG PUBLIC OPINION PROGRAM

HONG KONG PUBLIC OPINION RESEARCH INSTITUTE

香港民意研究所 之 香港民意研究計劃

限聚指數

Group Gathering Prohibition Index

19/11/2021

樣本資料 - 限聚指數基準調查

Contact Information - Group Gathering Prohibition Index Benchmark Survey

3

	香港民研意見群組成員 HKPOP Panel
調查日期 Survey date	18/10 15:00 – 25/10 15:00
調查方法 Survey method	以電郵接觸群組成員，並於網上完成調查 Online survey
訪問對象 Target population	十二歲或以上的香港市民 Hong Kong residents aged 12+
總成功樣本 Total sample size	5,974
回應比率 Response rate	6.6%
抽樣誤差 Sampling error	95% 置信水平，百分比誤差 +/-1% Sampling error of percentages at +/-1% at 95% confidence level
加權方法 Weighting method	按照1) 政府統計處提供的全港人口年齡及性別分佈統計數字、各區議會人口數字； 2) 選舉事務處提供的區議會選舉結果；3) 常規調查中的特首評分分佈數字，以 「反覆多重加權法」作出調整。 The figures are rim-weighted according to 1) gender-age distribution of Hong Kong population and by District Councils population figures from Census and Statistics Department; 2) Voting results of District Councils Election from Registration and Electoral Office; 3) rating distribution of Chief Executive from regular tracking surveys.

限聚指數

Group Gathering Prohibition Index

4

- **最新調查日期 Latest survey date: 18-25/10/2021 (N=5,974)**
- **上次調查日期 Last survey date: 13-20/9/2021 (N=6,210)**
- **上上次調查日期 Second last survey date: 16-23/8/2021 (N=7,456)**

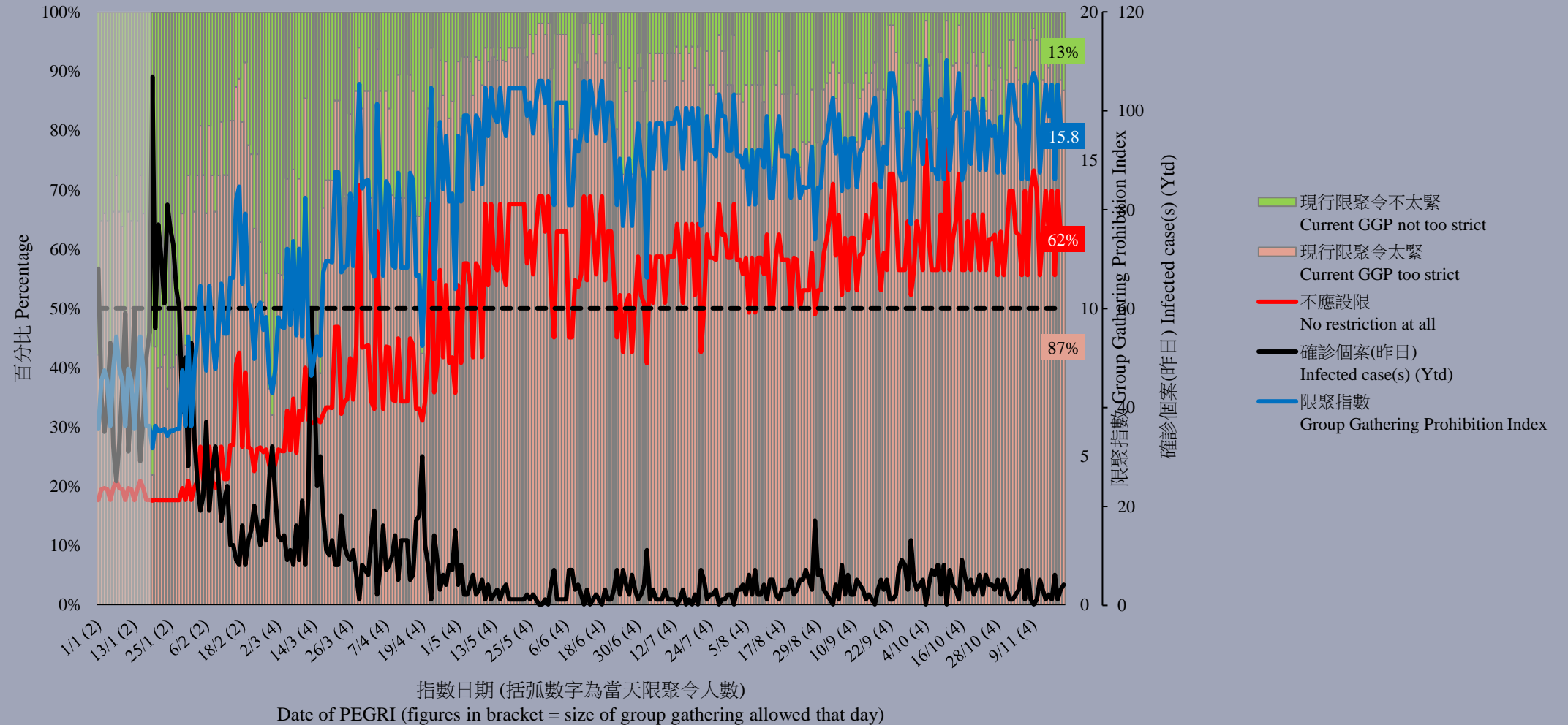
意見題目	Opinion Questions
<p>你認為香港應否無條件全面撤銷「限聚令」？</p> <ul style="list-style-type: none">▪ 應該無條件撤銷「限聚令」▪ 不應該，應視乎疫情而定▪ 不知道／很難說 <p>[追問沒有選擇應該“無條件撤銷「限聚令」”者]</p> <p>你認為每天新增確診個案數應是多少，才適合將「限聚令」訂於2人？</p> <p>你認為每天新增確診個案數應是多少，才適合將「限聚令」訂於4人？</p> <p>你認為每天新增確診個案數應是多少，才適合將「限聚令」訂於8人？</p> <p>你認為每天新增確診個案數應是多少，才適合將「限聚令」訂於16人？</p> <p>你認為感染個案清零多少天後，限聚令應該全面撤銷？</p> <p>請於以下欄位列舉你認為合適的 [個案數 及 限聚人數] 組合.....</p>	<p>Do you think the regulation prohibiting gatherings of more than a specific number of people in public places should be completely lifted unconditionally in Hong Kong?</p> <ul style="list-style-type: none">▪ Yes, the ban should be lifted unconditionally▪ No, it should depend on the epidemic situation▪ Don't know / hard to say <p>[For respondents NOT answering “Yes, the ban should be lifted unconditionally”]</p> <p>How many newly confirmed cases each day should there be before it would be appropriate to prohibit gatherings of more than 2 people?</p> <p>How many newly confirmed cases each day should there be before it would be appropriate to prohibit gatherings of more than 4 people?</p> <p>How many newly confirmed cases each day should there be before it would be appropriate to prohibit gatherings of more than 8 people?</p> <p>How many newly confirmed cases each day should there be before it would be appropriate to prohibit gatherings of more than 16 people?</p> <p>After how many days of zero infection do you think the group gathering ban should be lifted altogether?</p> <p>Please list combinations of [number of cases & number of people allowed in gatherings] that you think is appropriate in the field below:</p>

調查結果 - 限聚接受程度

Survey Result – Group Gathering Prohibition Acceptance Level

5

限聚接受程度 Group Gathering Prohibition Acceptance Level



限聚指數 - 分析評論

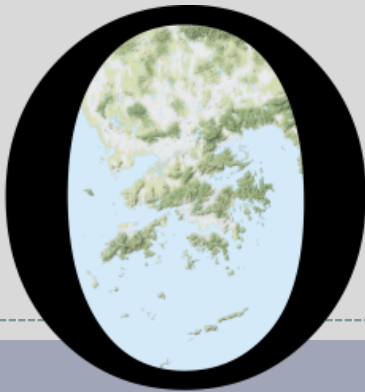
Group Gathering Prohibition Index – Commentary

6

民生大聯盟發言人章彤輝博士指出，「雖然在實行上有些許不便，但市民均已慢慢熟習使用『安心出行』。不過政府及專家組在防疫政策方面，應提供更清晰及更具說服力的指引及條例，讓市民可『安心執行』。同時亦應多重視及欣賞市民過往的努力，而非我們距離目標還有多遠。」

Dr Tung-fai Cheung, Spokesman of Alliance of Revitalizing Economy and Livelihood, observed, “Although there may be some inconvenience in implementation, the public has gradually become familiar with the use of LeaveHomeSafe. However, the government and the experts should provide clearer and more convincing guidelines and regulations on epidemic prevention policies, so that the public can ‘feel easy’ in implementing them. At the same time, there should be a greater appreciation of the public’s past efforts, rather than concerning how far we are from our goal.”

POP



HONG KONG PUBLIC OPINION PROGRAM

HONG KONG PUBLIC OPINION RESEARCH INSTITUTE

香港民意研究所 之 香港民意研究計劃

“We Hongkongers” Panel Survey

Latest Results

November 19, 2021

Contact Information - “We Hongkongers” Panel Survey

8

	HKPOP Panel
Date of survey	November 12, 3pm – November 18, 3pm
Survey method	Online survey
Target population	Hong Kong residents aged 12+
Total sample size	5,442
Response rate	6.1%
Sampling error	Sampling error of percentages at +/-1% at 95% confidence level
Weighting method	The figures are rim-weighted according to 1) gender-age distribution, educational attainment (highest level attended) distribution, economic activity status distribution of Hong Kong population and by District Councils population figures from Census and Statistics Department; 2) Voting results of District Councils Election from Registration and Electoral Office; 3) rating distribution of Chief Executive from regular tracking surveys.

Survey Result - “We Hongkongers” Panel Survey

9

- Latest survey period: 12-18/11/2021
- **Question: Q1 To what extent do you think the current Mandatory Provident Fund (MPF) system is capable of providing basic retirement protection to the people?**

	Combined [^] (n=5,176)	
Very capable	<1%	} 8%
Somewhat capable	8%	
Half-half	27%	
Somewhat incapable	42%	} 59%
Not capable at all	17%	
Don't know / hard to say	6%	
Mean [†]	2.3	

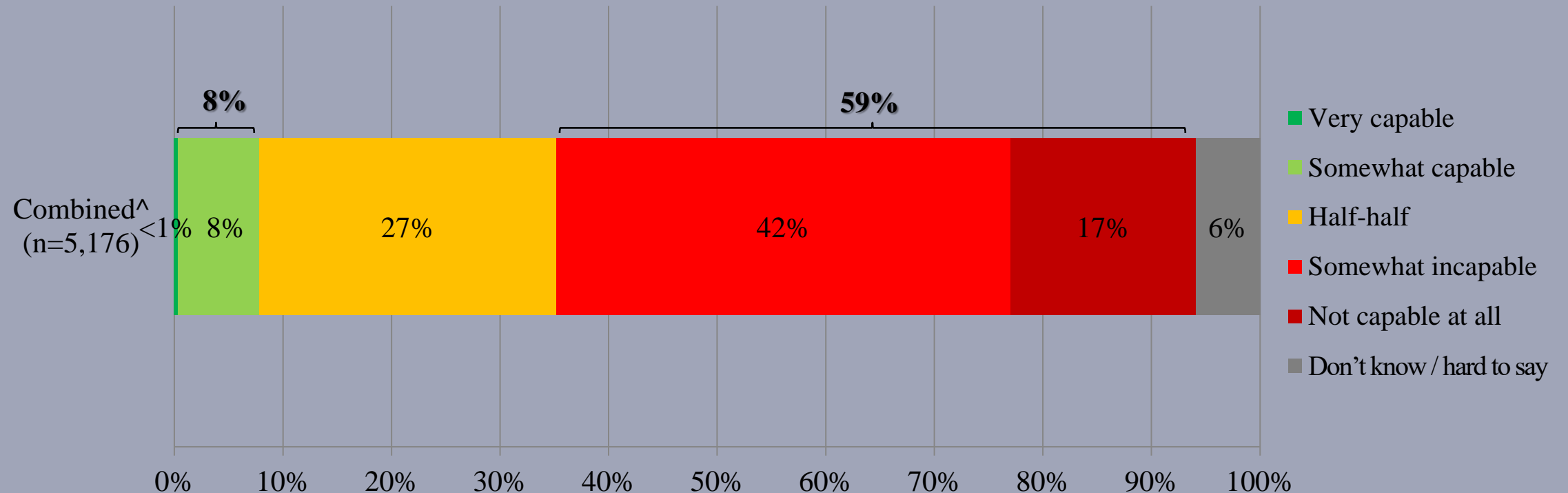
[^] The aggregated figures come from adjusting the by-group weighted figures using ratio of “pan-democratic” vs “non-pan-democratic” collected in regular tracking survey.

[†] The mean value is calculated by quantifying all individual responses into 1, 2, 3, 4, 5 marks according to their degree of fairness level, where 1 is the lowest and 5 the highest, and then calculate the sample mean.

Survey Result - “We Hongkongers” Panel Survey

10

- Latest survey period: 12-18/11/2021
- Question: Q1 To what extent do you think the current Mandatory Provident Fund (MPF) system is capable of providing basic retirement protection to the people?



^ The aggregated figures come from adjusting the by-group weighted figures using ratio of “pan-democratic” vs “non-pan-democratic” collected in regular tracking survey.

Survey Result - “We Hongkongers” Panel Survey

11

- **Latest survey period: 12-18/11/2021**
- **Question: Q2 How much improvement do you think the abolition of the MPF offsetting mechanism will bring to the MPF system?**

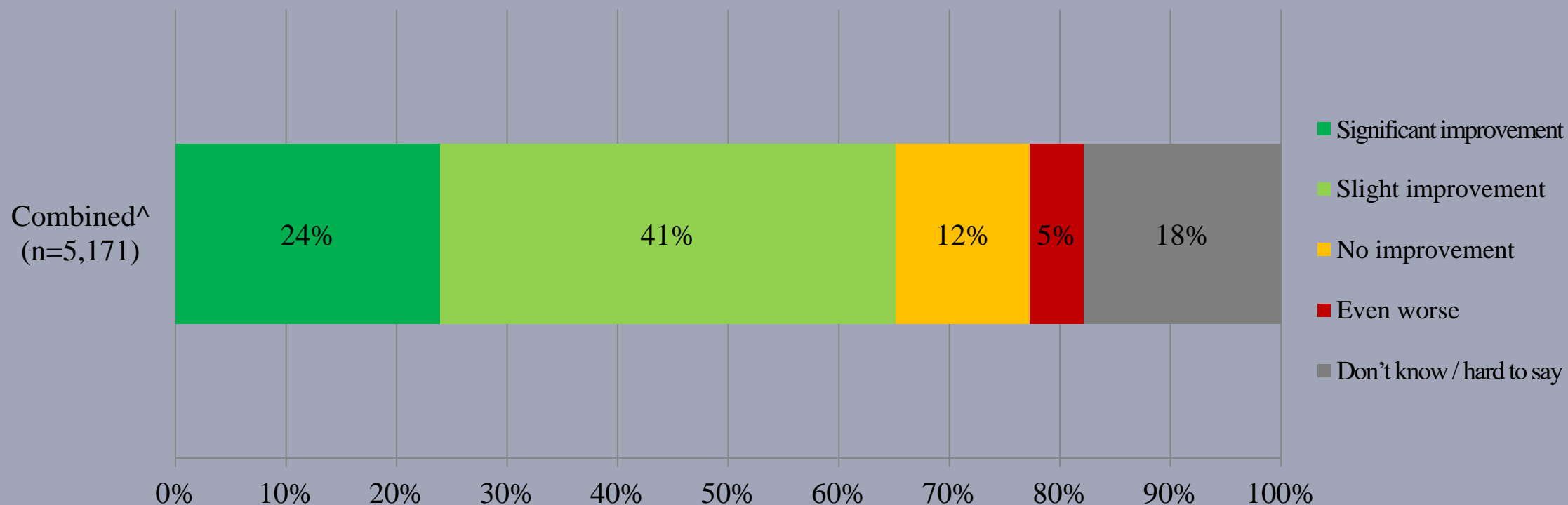
	Combined[^] (n=5,171)
Significant improvement	24%
Slight improvement	41%
No improvement	12%
Even worse	5%
Don't know / hard to say	18%

[^] The aggregated figures come from adjusting the by-group weighted figures using ratio of “pan-democratic” vs “non-pan-democratic” collected in regular tracking survey.

Survey Result - “We Hongkongers” Panel Survey

12

- Latest survey period: 12-18/11/2021
- Question: Q2 How much improvement do you think the abolition of the MPF offsetting mechanism will bring to the MPF system?



^ The aggregated figures come from adjusting the by-group weighted figures using ratio of “pan-democratic” vs “non-pan-democratic” collected in regular tracking survey.

Survey Result - “We Hongkongers” Panel Survey

13

- **Latest survey period: 12-18/11/2021**
- **Question: Q3 How much do you support or oppose the idea of converting the lump-sum withdrawal of MPF benefits after retirement to an annuity with monthly payout?**

	Combined [^] (n=5,175)	
Strongly support	6%	} 23%
Somewhat support	17%	
Half-half	29%	
Somewhat oppose	12%	} 43%
Strongly oppose	31%	
Don't know / hard to say	5%	
Mean [†]	2.5	

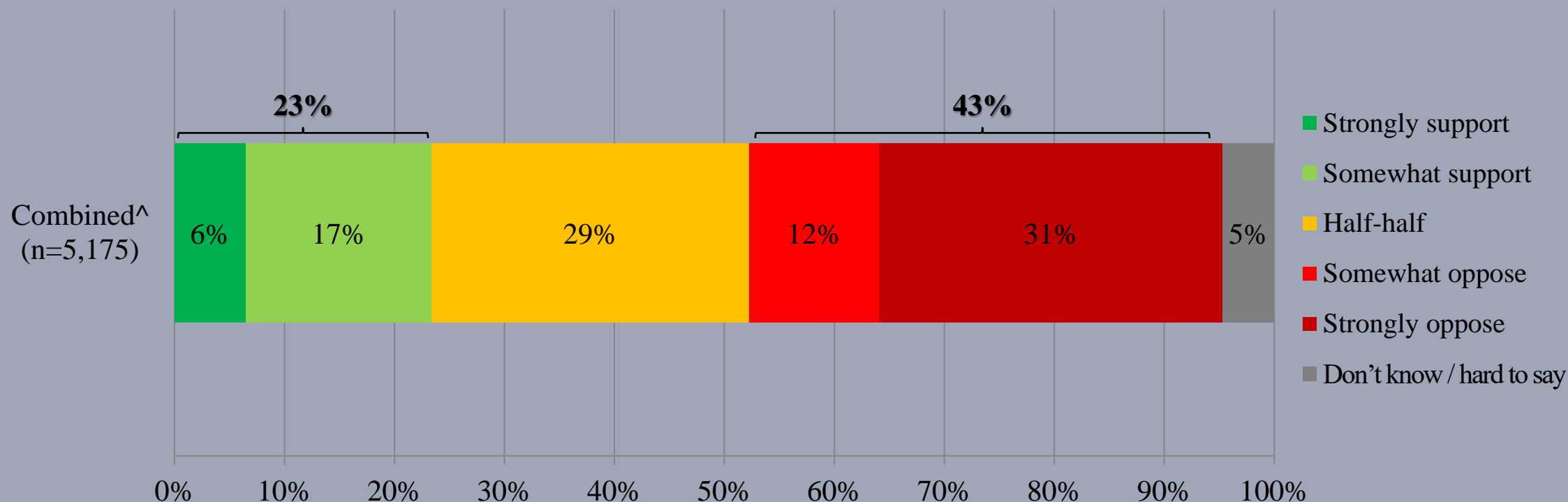
[^] The aggregated figures come from adjusting the by-group weighted figures using ratio of “pan-democratic” vs “non-pan-democratic” collected in regular tracking survey.

[†] The mean value is calculated by quantifying all individual responses into 1, 2, 3, 4, 5 marks according to their degree of fairness level, where 1 is the lowest and 5 the highest, and then calculate the sample mean.

Survey Result - “We Hongkongers” Panel Survey

14

- **Latest survey period: 12-18/11/2021**
- **Question: Q3 How much do you support or oppose the idea of converting the lump-sum withdrawal of MPF benefits after retirement to an annuity with monthly payout?**



^ The aggregated figures come from adjusting the by-group weighted figures using ratio of “pan-democratic” vs “non-pan-democratic” collected in regular tracking survey.

Survey Result - “We Hongkongers” Panel Survey

- Latest survey period: 12-18/11/2021
- **Question: Q4 How much do you support or oppose the implementation of universal retirement protection?**

	Combined [^] (n=5,174)	
Strongly support	28%	} 57%
Somewhat support	29%	
Half-half	18%	
Somewhat oppose	5%	} 13%
Strongly oppose	8%	
Don't know / hard to say	12%	
Mean [†]	3.7	

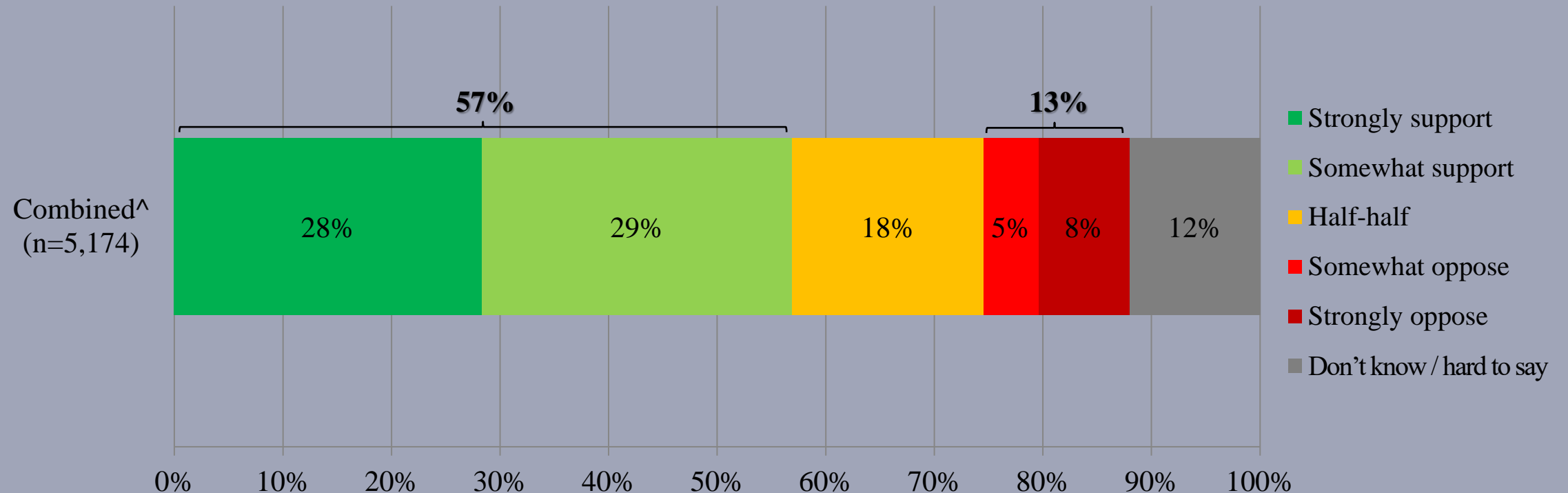
[^] The aggregated figures come from adjusting the by-group weighted figures using ratio of “pan-democratic” vs “non-pan-democratic” collected in regular tracking survey.

[†] The mean value is calculated by quantifying all individual responses into 1, 2, 3, 4, 5 marks according to their degree of fairness level, where 1 is the lowest and 5 the highest, and then calculate the sample mean.

Survey Result - “We Hongkongers” Panel Survey

16

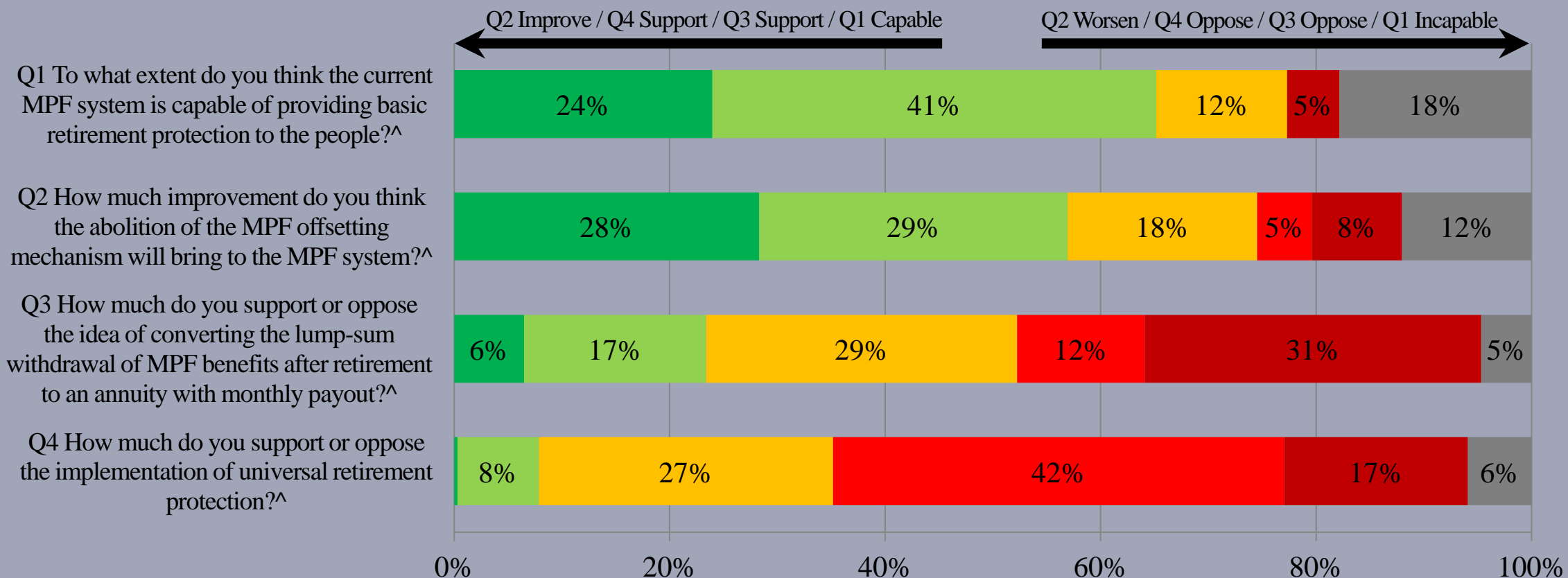
- Latest survey period: 12-18/11/2021
- Question: Q4 How much do you support or oppose the implementation of universal retirement protection?



^ The aggregated figures come from adjusting the by-group weighted figures using ratio of “pan-democratic” vs “non-pan-democratic” collected in regular tracking survey.

Survey Result - “We Hongkongers” Panel Survey

- **Latest survey period: 12-18/11/2021**



^ The aggregated figures come from adjusting the by-group weighted figures using ratio of “pan-democratic” vs “non-pan-democratic” collected in regular tracking survey.