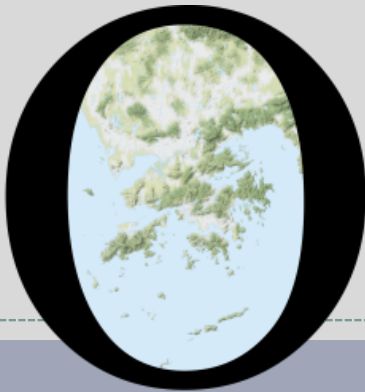


# POP



---

HONG KONG PUBLIC OPINION PROGRAM

HONG KONG PUBLIC OPINION RESEARCH INSTITUTE

香港民意研究所 之 香港民意研究計劃

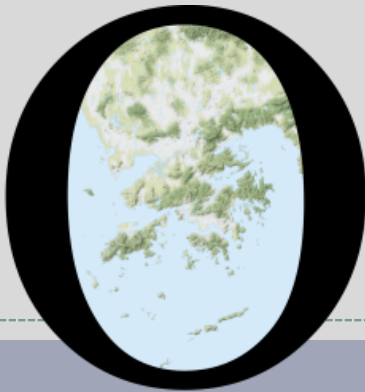
---

**“We Hongkongers” Panel Survey**

**Latest Results**

**December 23, 2021**

# POP



---

HONG KONG PUBLIC OPINION PROGRAM

HONG KONG PUBLIC OPINION RESEARCH INSTITUTE

香港民意研究所 之 香港民意研究計劃

---

限聚指數

**Group Gathering Prohibition Index**

**23/12/2021**

# 樣本資料 - 限聚指數基準調查

## Contact Information - Group Gathering Prohibition Index Benchmark Survey

3

	香港民研意見群組成員 HKPOP Panel
調查日期 Survey date	23/11 15:00 – 29/11 15:00
調查方法 Survey method	以電郵接觸群組成員，並於網上完成調查 Online survey
訪問對象 Target population	十二歲或以上的香港市民 Hong Kong residents aged 12+
總成功樣本 Total sample size	5,888
回應比率 Response rate	6.6%
抽樣誤差 Sampling error	95% 置信水平，百分比誤差 +/-1% Sampling error of percentages at +/-1% at 95% confidence level
加權方法 Weighting method	按照1) 政府統計處提供的全港人口年齡及性別分佈統計數字、各區議會人口數字； 2) 選舉事務處提供的區議會選舉結果；3) 常規調查中的特首評分分佈數字，以 「反覆多重加權法」作出調整。 The figures are rim-weighted according to 1) gender-age distribution of Hong Kong population and by District Councils population figures from Census and Statistics Department; 2) Voting results of District Councils Election from Registration and Electoral Office; 3) rating distribution of Chief Executive from regular tracking surveys.

# 限聚指數

## Group Gathering Prohibition Index

4

- **最新調查日期 Latest survey date: 23-29/11/2021 (N=5,888)**
- **上次調查日期 Last survey date: 18-25/10/2021 (N=5,974)**
- **上上次調查日期 Second last survey date: 13-20/9/2021 (N=6,210)**

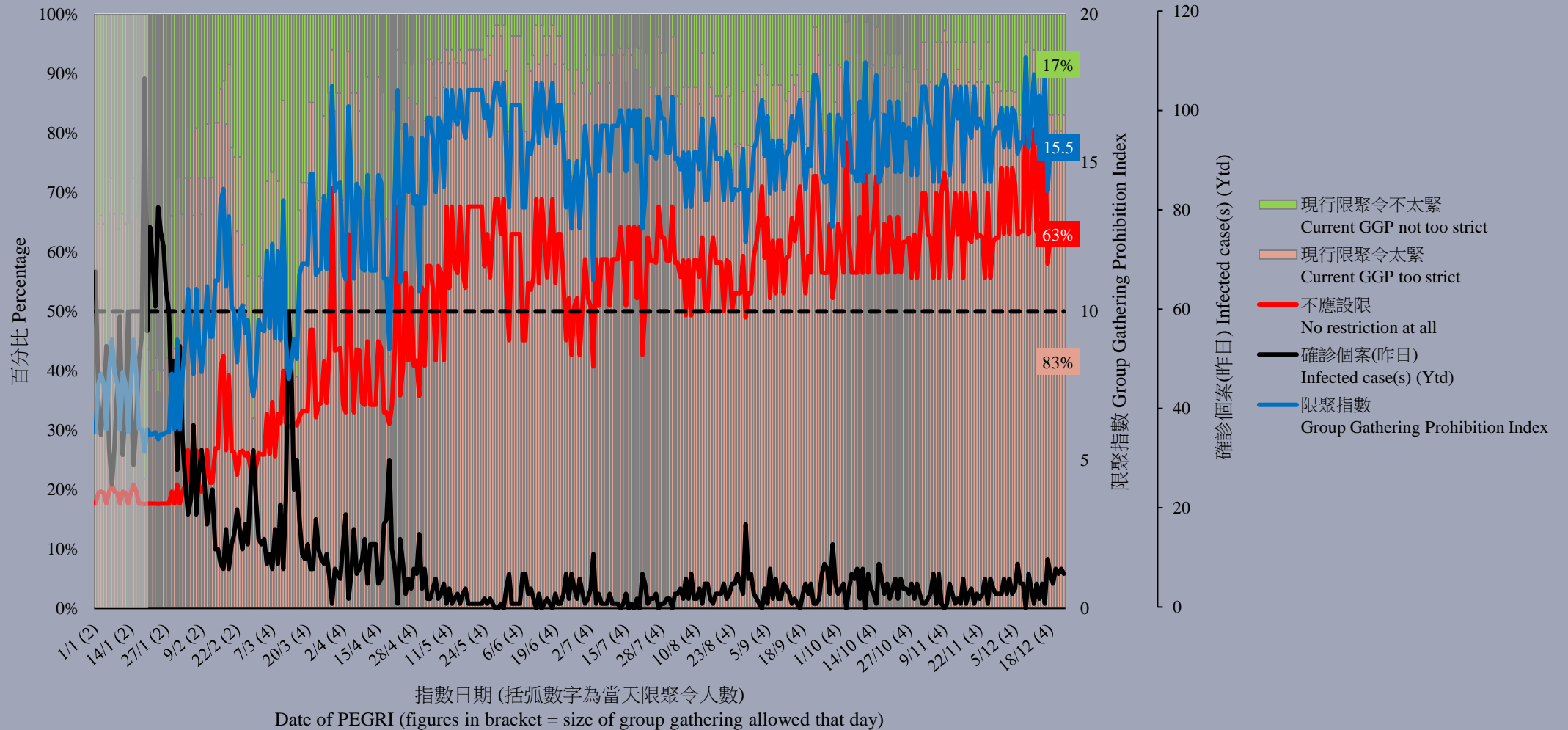
意見題目	Opinion Questions
<p>你認為香港應否無條件全面撤銷「限聚令」？</p> <ul style="list-style-type: none"><li>▪ 應該無條件撤銷「限聚令」</li><li>▪ 不應該，應視乎疫情而定</li><li>▪ 不知道／很難說</li></ul> <p>[追問沒有選擇應該“無條件撤銷「限聚令」”者]</p> <p>你認為每天新增確診個案數應是多少，才適合將「限聚令」訂於2人？</p> <p>你認為每天新增確診個案數應是多少，才適合將「限聚令」訂於4人？</p> <p>你認為每天新增確診個案數應是多少，才適合將「限聚令」訂於8人？</p> <p>你認為每天新增確診個案數應是多少，才適合將「限聚令」訂於16人？</p> <p>你認為感染個案清零多少天後，限聚令應該全面撤銷？</p> <p>請於以下欄位列舉你認為合適的 [個案數 及 限聚人數] 組合.....</p>	<p>Do you think the regulation prohibiting gatherings of more than a specific number of people in public places should be completely lifted unconditionally in Hong Kong?</p> <ul style="list-style-type: none"><li>▪ Yes, the ban should be lifted unconditionally</li><li>▪ No, it should depend on the epidemic situation</li><li>▪ Don't know / hard to say</li></ul> <p>[For respondents NOT answering “Yes, the ban should be lifted unconditionally”]</p> <p>How many newly confirmed cases each day should there be before it would be appropriate to prohibit gatherings of more than 2 people?</p> <p>How many newly confirmed cases each day should there be before it would be appropriate to prohibit gatherings of more than 4 people?</p> <p>How many newly confirmed cases each day should there be before it would be appropriate to prohibit gatherings of more than 8 people?</p> <p>How many newly confirmed cases each day should there be before it would be appropriate to prohibit gatherings of more than 16 people?</p> <p>After how many days of zero infection do you think the group gathering ban should be lifted altogether?</p> <p>Please list combinations of [number of cases &amp; number of people allowed in gatherings] that you think is appropriate in the field below:</p>

# 調查結果 - 限聚接受程度

## Survey Result – Group Gathering Prohibition Acceptance Level

5

限聚接受程度 Group Gathering Prohibition Acceptance Level



# 限聚指數 - 分析評論

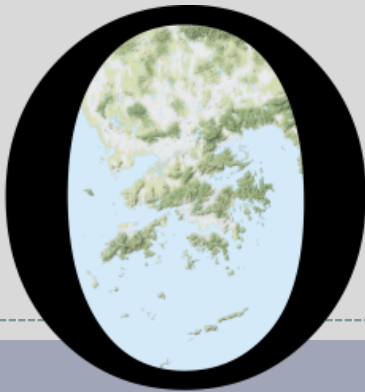
## Group Gathering Prohibition Index – Commentary

6

民生大聯盟發言人章彤輝博士指出，「節日『做冬』剛過，部份食肆及家庭飯聚已回復正常。但似乎市民出外慶祝就比過往少，而轉為在家安排食材及聚會。另外，在通關方面，業界則期待經一段時間的磨合後，有機會回復以往的水平，而非只限於現在的配額。中小企亦預期疫情臨近尾聲，以『獅子山下』的精神努力應對緊接著的節日檔期。」

**Dr Tung-fai Cheung, Spokesman of Alliance of Revitalizing Economy and Livelihood, observed, “With the Winter Solstice Festival just over, some restaurants and family gatherings have returned to normal. However, it seems that people are going out to celebrate less than in the past and are arranging food and gatherings at home. In terms of border resumption, the industry is looking forward to return to previous level after a run-in period, rather than just the existing quota. SMEs are also expecting the epidemic to draw to a close and are working hard to cope with the upcoming festive seasons with a ‘Lion Rock’ spirit.”**

# POP



---

HONG KONG PUBLIC OPINION PROGRAM

HONG KONG PUBLIC OPINION RESEARCH INSTITUTE

香港民意研究所 之 香港民意研究計劃

---

**“We Hongkongers” Panel Survey**

**Latest Results**

**December 23, 2021**

# Contact Information - “We Hongkongers” Panel Survey

8

	<b>HKPOP Panel</b>
Date of survey	December 17, 3pm – December 22, 3pm
Survey method	Online survey
Target population	Hong Kong residents aged 12+
Total sample size	4,873
Response rate	5.5%
Sampling error	Sampling error of percentages at +/-1% at 95% confidence level
Weighting method	The figures are rim-weighted according to 1) gender-age distribution, educational attainment (highest level attended) distribution, economic activity status distribution of Hong Kong population and by District Councils population figures from Census and Statistics Department; 2) Voting results of District Councils Election from Registration and Electoral Office; 3) rating distribution of Chief Executive from regular tracking surveys.



# Survey Result - “We Hongkongers” Panel Survey

9

- Latest survey period: 17-22/12/2021
- **Question: Q1 The law on tenancy control of subdivided units will come into force soon. It will regulate the rate of rent increase but will not set a ceiling on the initial rent. How effective or ineffective in protecting the tenants do you think the law is?**

	Combined <sup>^</sup> (n=4,596)	
Very effective	4%	} 18%
Somewhat effective	14%	
Half-half	29%	
Somewhat ineffective	19%	} 43%
Very ineffective	24%	
Don't know / hard to say	10%	
Mean <sup>†</sup>	2.5	

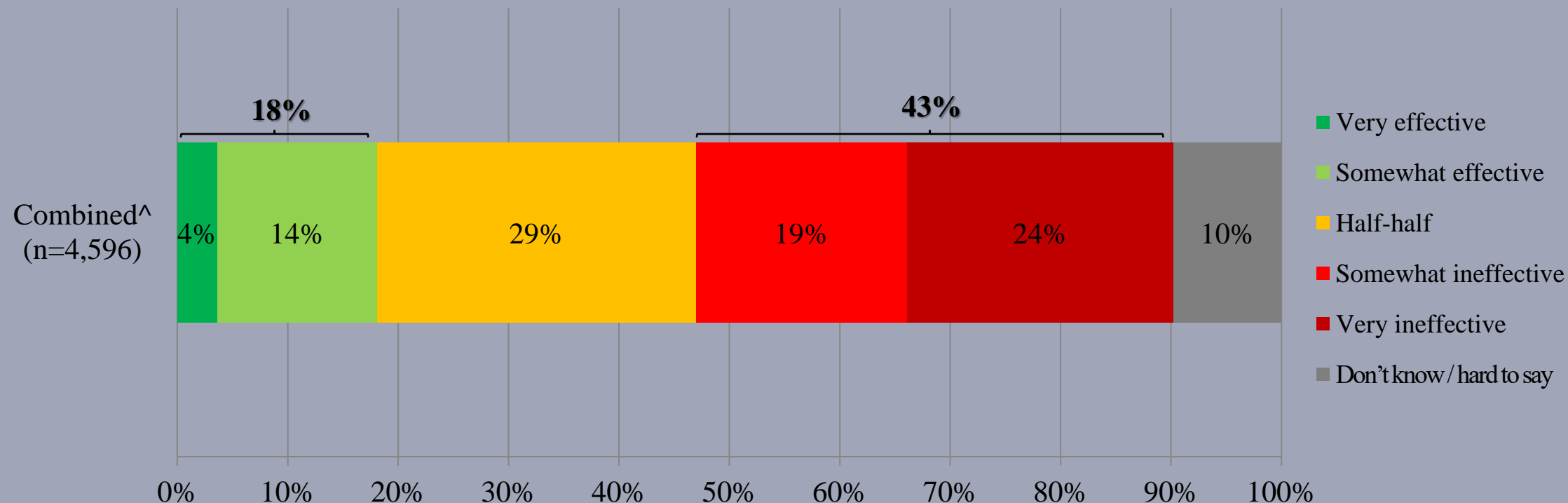
<sup>^</sup> The aggregated figures come from adjusting the by-group weighted figures using ratio of “pan-democratic” vs “non-pan-democratic” collected in regular tracking survey.

<sup>†</sup> The mean value is calculated by quantifying all individual responses into 1, 2, 3, 4, 5 marks according to their degree of effective level, where 1 is the lowest and 5 the highest, and then calculate the sample mean.

# Survey Result - “We Hongkongers” Panel Survey

10

- Latest survey period: 17-22/12/2021
- **Question: Q1 The law on tenancy control of subdivided units will come into force soon. It will regulate the rate of rent increase but will not set a ceiling on the initial rent. How effective or ineffective in protecting the tenants do you think the law is?**



^ The aggregated figures come from adjusting the by-group weighted figures using ratio of “pan-democratic” vs “non-pan-democratic” collected in regular tracking survey.

# Survey Result - “We Hongkongers” Panel Survey

- **Latest survey period: 17-22/12/2021**
- **Question: Q2 How much do you support or oppose the law on tenancy control of subdivided units having a retroactive period to regulate tenancy agreements signed before it comes into force?**

	Combined <sup>^</sup> (n=4,591)	
Strongly support	13%	} 44%
Somewhat support	31%	
Half-half	20%	
Somewhat oppose	12%	} 20%
Strongly oppose	8%	
Don't know / hard to say	16%	
Mean <sup>†</sup>	3.3	

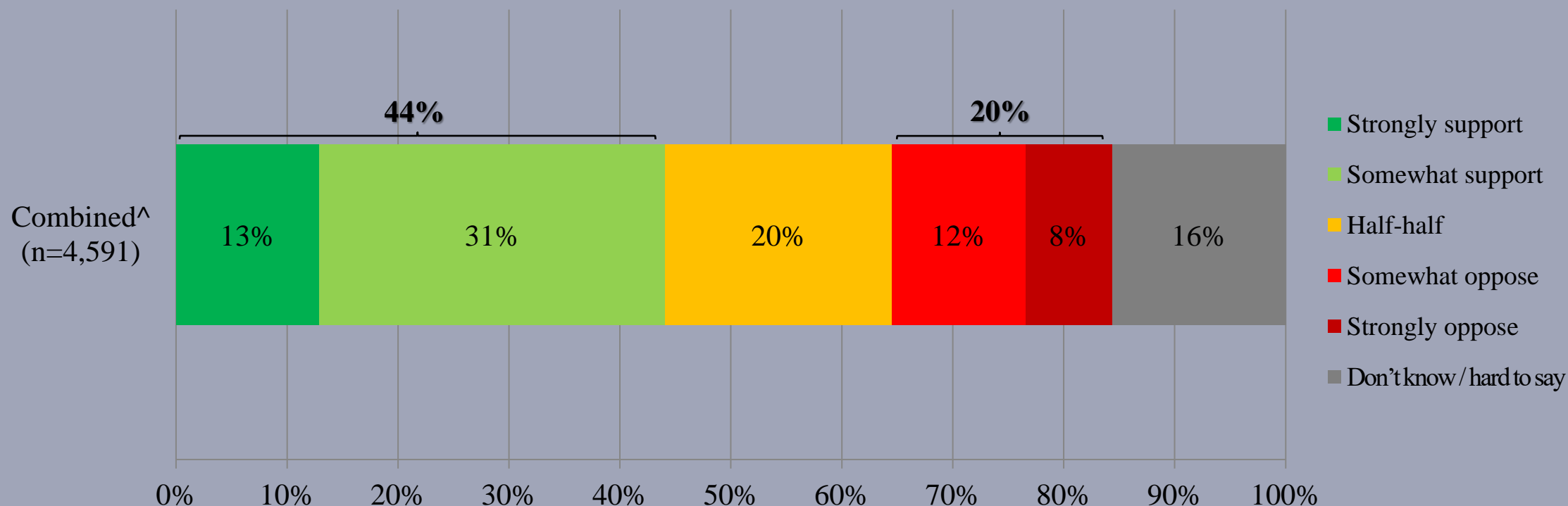
<sup>^</sup> The aggregated figures come from adjusting the by-group weighted figures using ratio of “pan-democratic” vs “non-pan-democratic” collected in regular tracking survey.

<sup>†</sup> The mean value is calculated by quantifying all individual responses into 1, 2, 3, 4, 5 marks according to their degree of support level, where 1 is the lowest and 5 the highest, and then calculate the sample mean.

# Survey Result - “We Hongkongers” Panel Survey

12

- **Latest survey period: 17-22/12/2021**
- **Question: Q2 How much do you support or oppose the law on tenancy control of subdivided units having a retroactive period to regulate tenancy agreements signed before it comes into force?**



^ The aggregated figures come from adjusting the by-group weighted figures using ratio of “pan-democratic” vs “non-pan-democratic” collected in regular tracking survey.

# Survey Result - “We Hongkongers” Panel Survey

13

- Latest survey period: 17-22/12/2021
- **Question: Q3 The government said it will establish a task force of around 50 people to enforce the law on tenancy control of subdivided units. Meanwhile, there are currently around 92,000 households living in subdivided units in Hong Kong. How strong or weak do you think the enforcement efforts will be?**

	Combined <sup>^</sup> (n=4,596)	
Very strong	<1%	} 9%
Somewhat strong	8%	
Half-half	17%	
Somewhat weak	23%	} <b>60%</b>
Very weak	37%	
Don't know / hard to say	14%	
Mean <sup>†</sup>	2.0	

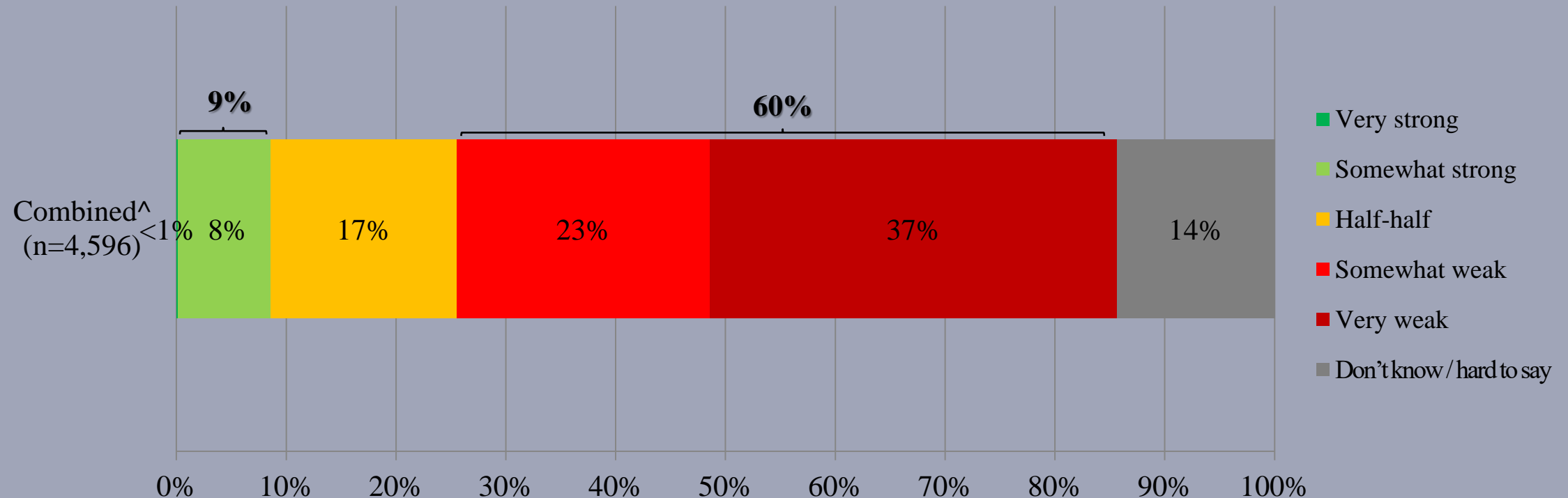
<sup>^</sup> The aggregated figures come from adjusting the by-group weighted figures using ratio of “pan-democratic” vs “non-pan-democratic” collected in regular tracking survey.

<sup>†</sup> The mean value is calculated by quantifying all individual responses into 1, 2, 3, 4, 5 marks according to their degree of enforcement effort level, where 1 is the lowest and 5 the highest, and then calculate the sample mean.

# Survey Result - “We Hongkongers” Panel Survey

14

- Latest survey period: 17-22/12/2021
- **Question: Q3 The government said it will establish a task force of around 50 people to enforce the law on tenancy control of subdivided units. Meanwhile, there are currently around 92,000 households living in subdivided units in Hong Kong. How strong or weak do you think the enforcement efforts will be?**

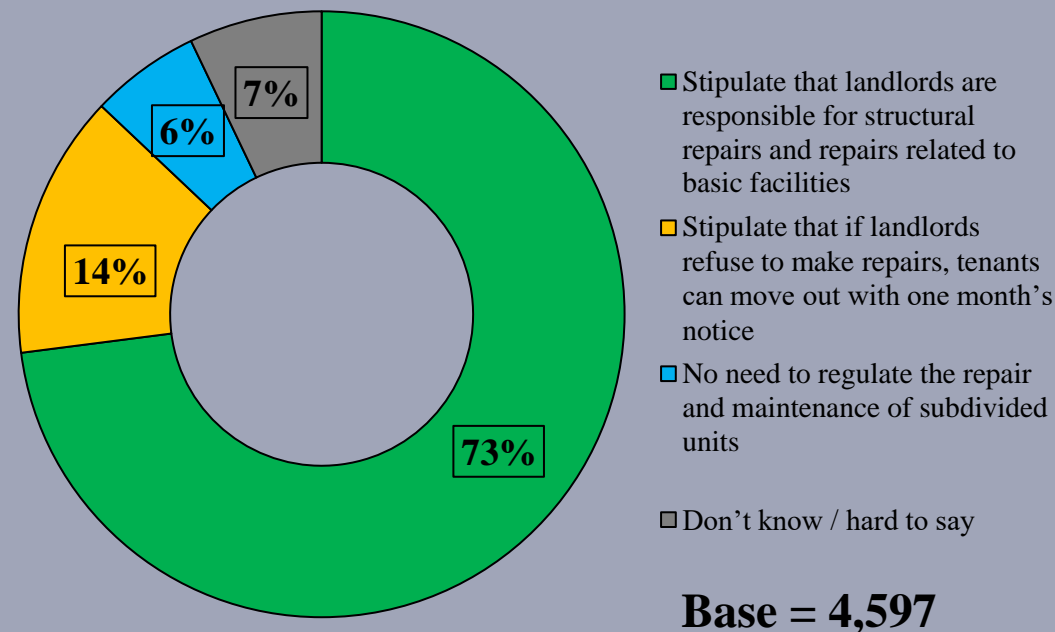


<sup>^</sup> The aggregated figures come from adjusting the by-group weighted figures using ratio of “pan-democratic” vs “non-pan-democratic” collected in regular tracking survey.

# Survey Result - “We Hongkongers” Panel Survey

- Latest survey period: 17-22/12/2021
- Question: Q4 On the repair and maintenance of subdivided units, which of the following do you think is the better way? [Randomise and first two answers]

	Combined <sup>^</sup> (n=4,597)
Stipulate that landlords are responsible for structural repairs and repairs related to basic facilities	73%
Stipulate that if landlords refuse to make repairs, tenants can move out with one month’s notice	14%
No need to regulate the repair and maintenance of subdivided units	6%
Don’t know / hard to say	7%



<sup>^</sup> The aggregated figures come from adjusting the by-group weighted figures using ratio of “pan-democratic” vs “non-pan-democratic” collected in regular tracking survey.