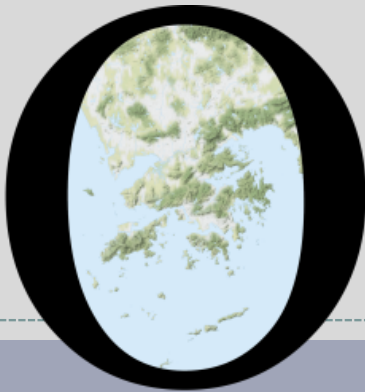


POP



HONG KONG PUBLIC OPINION PROGRAM

HONG KONG PUBLIC OPINION RESEARCH INSTITUTE

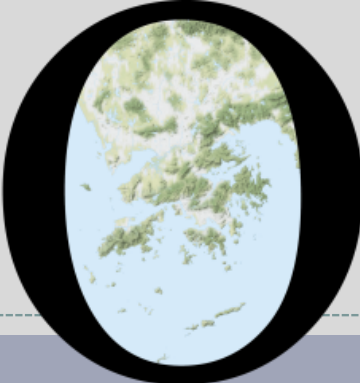
香港民意研究所 之 香港民意研究計劃

“We Hongkongers” Panel Survey

Latest Results

January 7, 2022

POP



HONG KONG PUBLIC OPINION PROGRAM

HONG KONG PUBLIC OPINION RESEARCH INSTITUTE

香港民意研究所 之 香港民意研究計劃

限聚指數

Group Gathering Prohibition Index

7/1/2022

樣本資料 - 限聚指數基準調查

Contact Information - Group Gathering Prohibition Index Benchmark Survey

3

	香港民研意見群組成員 HKPOP Panel
調查日期 Survey date	17/12 15:00 – 27/12 15:00
調查方法 Survey method	以電郵接觸群組成員，並於網上完成調查 Online survey
訪問對象 Target population	十二歲或以上的香港市民 Hong Kong residents aged 12+
總成功樣本 Total sample size	5,063
回應比率 Response rate	5.7%
抽樣誤差 Sampling error	95% 置信水平，百分比誤差 +/-1% Sampling error of percentages at +/-1% at 95% confidence level
加權方法 Weighting method	按照1) 政府統計處提供的全港人口年齡及性別分佈統計數字、各區議會人口數字； 2) 選舉事務處提供的區議會選舉結果；3) 常規調查中的特首評分分佈數字，以 「反覆多重加權法」作出調整。 The figures are rim-weighted according to 1) gender-age distribution of Hong Kong population and by District Councils population figures from Census and Statistics Department; 2) Voting results of District Councils Election from Registration and Electoral Office; 3) rating distribution of Chief Executive from regular tracking surveys.

限聚指數

Group Gathering Prohibition Index

4

- **最新調查日期 Latest survey date: 17-27/12/2021 (N=5,063)**
- **上次調查日期 Last survey date: 23-29/11/2021 (N=5,888)**
- **上上次調查日期 Second last survey date: 18-25/10/2021 (N=5,974)**

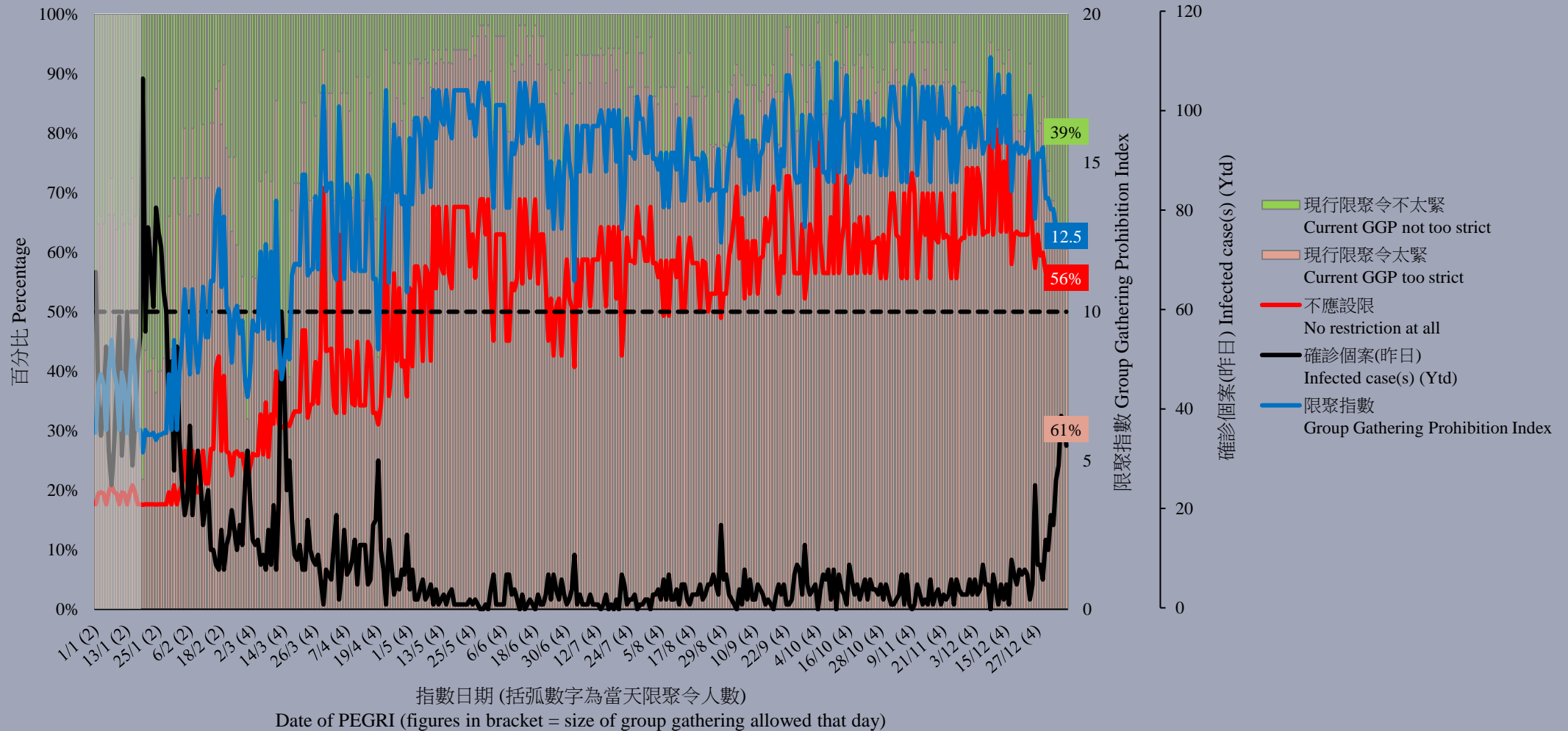
意見題目	Opinion Questions
<p>你認為香港應否無條件全面撤銷「限聚令」？</p> <ul style="list-style-type: none">▪ 應該無條件撤銷「限聚令」▪ 不應該，應視乎疫情而定▪ 不知道／很難說 <p>[追問沒有選擇應該“無條件撤銷「限聚令」”者] 你認為每天新增確診個案數應是多少，才適合將「限聚令」訂於2人？ 你認為每天新增確診個案數應是多少，才適合將「限聚令」訂於4人？ 你認為每天新增確診個案數應是多少，才適合將「限聚令」訂於8人？ 你認為每天新增確診個案數應是多少，才適合將「限聚令」訂於16人？ 你認為感染個案清零多少天後，限聚令應該全面撤銷？</p> <p>請於以下欄位列舉你認為合適的 [個案數 及 限聚人數] 組合.....</p>	<p>Do you think the regulation prohibiting gatherings of more than a specific number of people in public places should be completely lifted unconditionally in Hong Kong?</p> <ul style="list-style-type: none">▪ Yes, the ban should be lifted unconditionally▪ No, it should depend on the epidemic situation▪ Don't know / hard to say <p>[For respondents NOT answering “Yes, the ban should be lifted unconditionally”] How many newly confirmed cases each day should there be before it would be appropriate to prohibit gatherings of more than 2 people? How many newly confirmed cases each day should there be before it would be appropriate to prohibit gatherings of more than 4 people? How many newly confirmed cases each day should there be before it would be appropriate to prohibit gatherings of more than 8 people? How many newly confirmed cases each day should there be before it would be appropriate to prohibit gatherings of more than 16 people? After how many days of zero infection do you think the group gathering ban should be lifted altogether?</p> <p>Please list combinations of [number of cases & number of people allowed in gatherings] that you think is appropriate in the field below:</p>

調查結果 - 限聚接受程度

Survey Result – Group Gathering Prohibition Acceptance Level

5

限聚接受程度 Group Gathering Prohibition Acceptance Level



限聚指數 - 分析評論

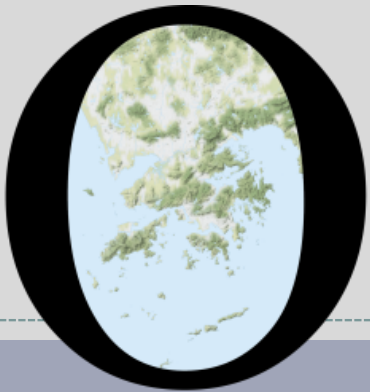
Group Gathering Prohibition Index – Commentary

6

民生大聯盟發言人章彤輝博士指出，「各行各業的最新情況可謂雪上加霜，一來因為通關遙遙無期，二來因為突如其來的限聚規定。當然，取消大型活動亦影響到一些商戶。同時可見不同行業也有立即向政府反映問題及要求相關救亡措施。各行業本來預期疫情情況已相對穩定，可惜臨近過年卻遇上新一輪的疫情，令生意受到影響。」

Dr Tung-fai Cheung, Spokesman of Alliance of Revitalizing Economy and Livelihood, observed, “The latest situation of various industries can be said to be aggravated by the uncertainty of border resumption and the sudden regulations on gathering. Of course, the cancellation of large-scale events also affects some businesses. At the same time, it can be seen that different industries have immediately reflected their problems to the government and asked for relevant rescue measures. The industry had expected the epidemic situation to be relatively stable, but unfortunately, a new round of epidemic has hit before the Chinese New Year, which has affected their business.”

POP



HONG KONG PUBLIC OPINION PROGRAM

HONG KONG PUBLIC OPINION RESEARCH INSTITUTE

香港民意研究所 之 香港民意研究計劃

“We Hongkongers” Panel Survey

Latest Results

January 7, 2022

Contact Information - “We Hongkongers” Panel Survey

8

	HKPOP Panel
Date of survey	January 3, 3pm – January 6, 3pm
Survey method	Online survey
Target population	Hong Kong residents aged 12+
Total sample size	7,745
Response rate	8.7%
Sampling error	Sampling error of percentages at +/-1% at 95% confidence level
Weighting method	Rim-weighted according to 1) gender-age distribution, educational attainment (highest level attended) distribution and economic activity status distribution of Hong Kong population from Census and Statistics Department; 2) appraisal of political condition and political inclination distribution from regular tracking surveys.

Survey Result - “We Hongkongers” Panel Survey

9

- Latest survey period: 3-6/1/2022
- **Question: Q1 Compared to the year before that (2020), in the past year (2021), has the amount of time you spent on receiving local news increased or decreased in general?**

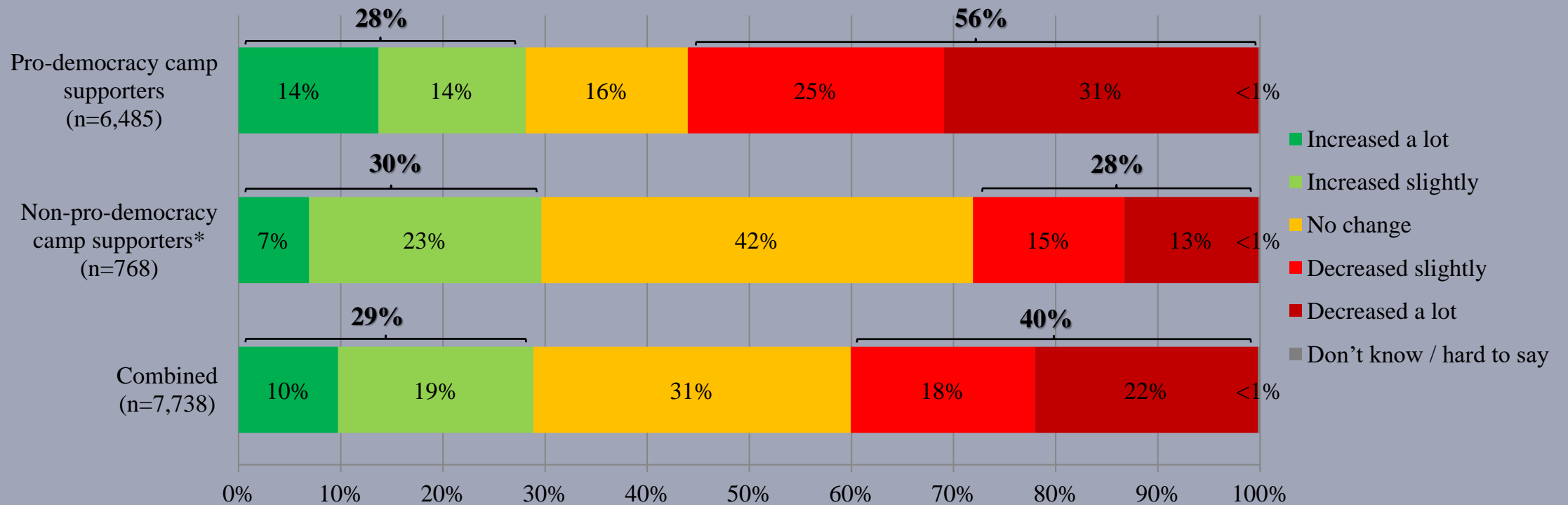
	Pro-democracy camp supporters (n=6,485)	Non-pro-democracy camp supporters* (n=768)	Combined (n=7,738)
Increased a lot	14%	7%	10%
Increased slightly	14%	23%	19%
	28%	30%	29%
No change	16%	42%	31%
Decreased slightly	25%	15%	18%
Decreased a lot	31%	13%	22%
	56%	28%	40%
Don't know / hard to say	<1%	<1%	<1%
Mean†	2.6	3.0	2.8

* Include: pro-establishment camp supporters, centrist supporters, no political inclination / politically neutral / do not belong to any camp

† The mean value is calculated by quantifying all individual responses into 1, 2, 3, 4, 5 marks according to their degree of change level, where 1 is decreased a lot and 5 increased a lot, and then calculate the sample mean.

Survey Result - “We Hongkongers” Panel Survey

- Latest survey period: 3-6/1/2022
- **Question: Q1 Compared to the year before that (2020), in the past year (2021), has the amount of time you spent on receiving local news increased or decreased in general?**



* Include: pro-establishment camp supporters, centrist supporters, no political inclination / politically neutral / do not belong to any camp

Survey Result - “We Hongkongers” Panel Survey

11

- Latest survey period: 3-6/1/2022
- Question: Q2 In this year (2022), do you expect the amount of time you spend on receiving local news to increase or decrease in general?

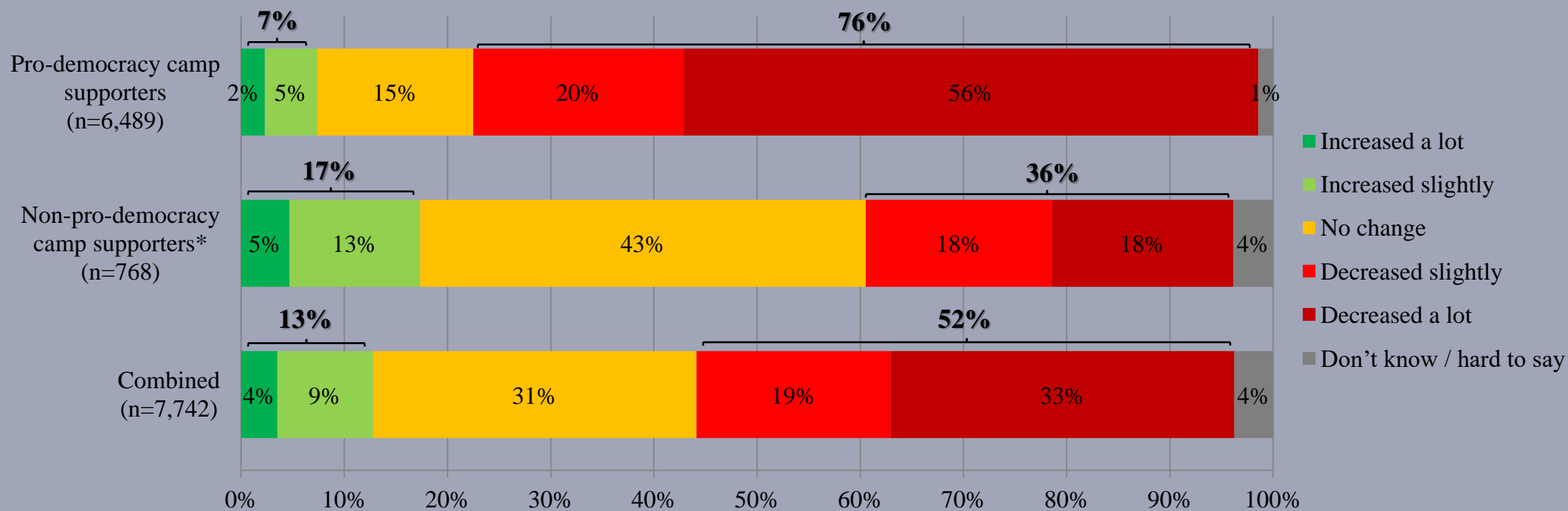
	Pro-democracy camp supporters (n=6,489)	Non-pro-democracy camp supporters* (n=768)	Combined (n=7,742)
Increased a lot	2%	5%	4%
Increased slightly	5%	13%	9%
	7%	17%	13%
No change	15%	43%	31%
Decreased slightly	20%	18%	19%
Decreased a lot	56%	18%	33%
	76%	36%	52%
Don't know / hard to say	1%	4%	4%
Mean†	1.8	2.7	2.3

* Include: pro-establishment camp supporters, centrist supporters, no political inclination / politically neutral / do not belong to any camp

† The mean value is calculated by quantifying all individual responses into 1, 2, 3, 4, 5 marks according to their degree of change level, where 1 is decreased a lot and 5 increased a lot, and then calculate the sample mean.

Survey Result - “We Hongkongers” Panel Survey

- Latest survey period: 3-6/1/2022
- Question: Q2 In this year (2022), do you expect the amount of time you spend on receiving local news to increase or decrease in general?



* Include: pro-establishment camp supporters, centrist supporters, no political inclination / politically neutral / do not belong to any camp

Survey Result - “We Hongkongers” Panel Survey

13

- Latest survey period: 3-6/1/2022
- Question: Q3 What do you think about the freedom of the press and of information in Hong Kong after Stand News and Citizen News announced they would cease operation?

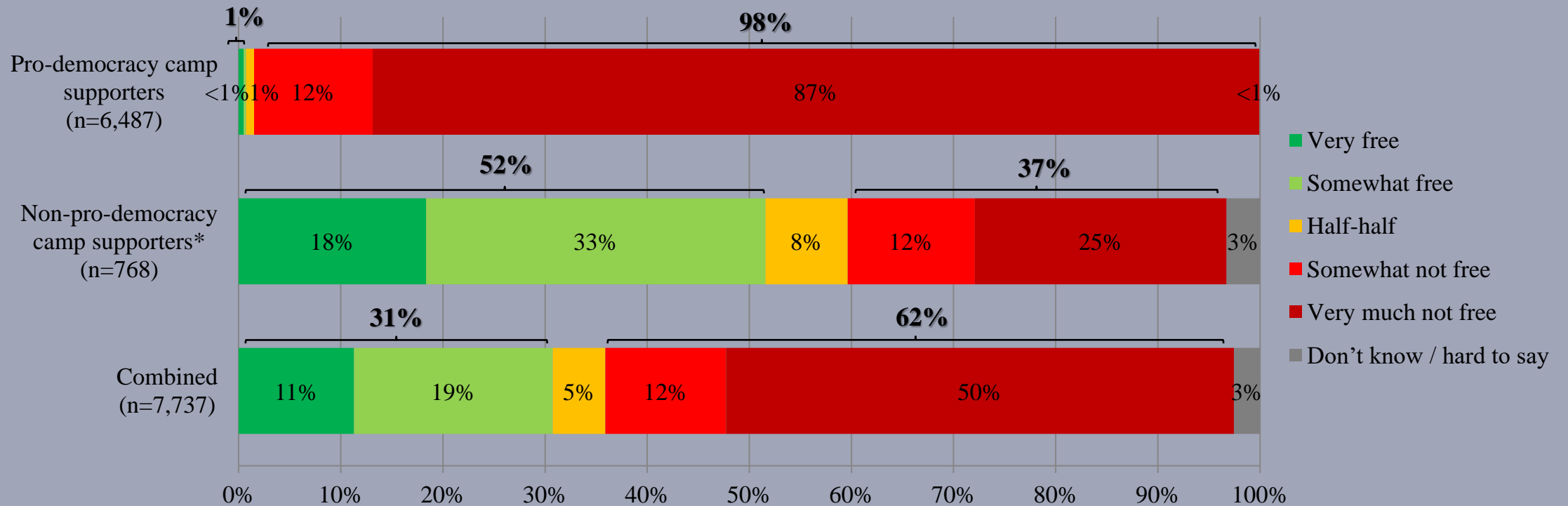
	Pro-democracy camp supporters (n=6,487)	Non-pro-democracy camp supporters* (n=768)	Combined (n=7,737)
Very free	<1%	18%	11%
Somewhat free	<1%	33%	19%
	1%	52%	31%
Half-half	1%	8%	5%
Somewhat not free	12%	12%	12%
Very much not free	87%	25%	50%
	98%	37%	62%
Don't know / hard to say	<1%	3%	3%
Mean†	1.2	3.1	2.3

* Include: pro-establishment camp supporters, centrist supporters, no political inclination / politically neutral / do not belong to any camp

† The mean value is calculated by quantifying all individual responses into 1, 2, 3, 4, 5 marks according to their degree of freedom level, where 1 is the lowest and 5 the highest, and then calculate the sample mean.

Survey Result - “We Hongkongers” Panel Survey

- Latest survey period: 3-6/1/2022
- Question: Q3 What do you think about the freedom of the press and of information in Hong Kong after Stand News and Citizen News announced they would cease operation?



* Include: pro-establishment camp supporters, centrist supporters, no political inclination / politically neutral / do not belong to any camp

Survey Result - “We Hongkongers” Panel Survey

15

- Latest survey period: 3-6/1/2022
- **Question: Q4 There is a view that the cessation of operation of Stand News and Citizen News will reduce the accountability and integrity (in terms of being corruption-free) of the Hong Kong government in future. How much do you support or oppose this point of view?**

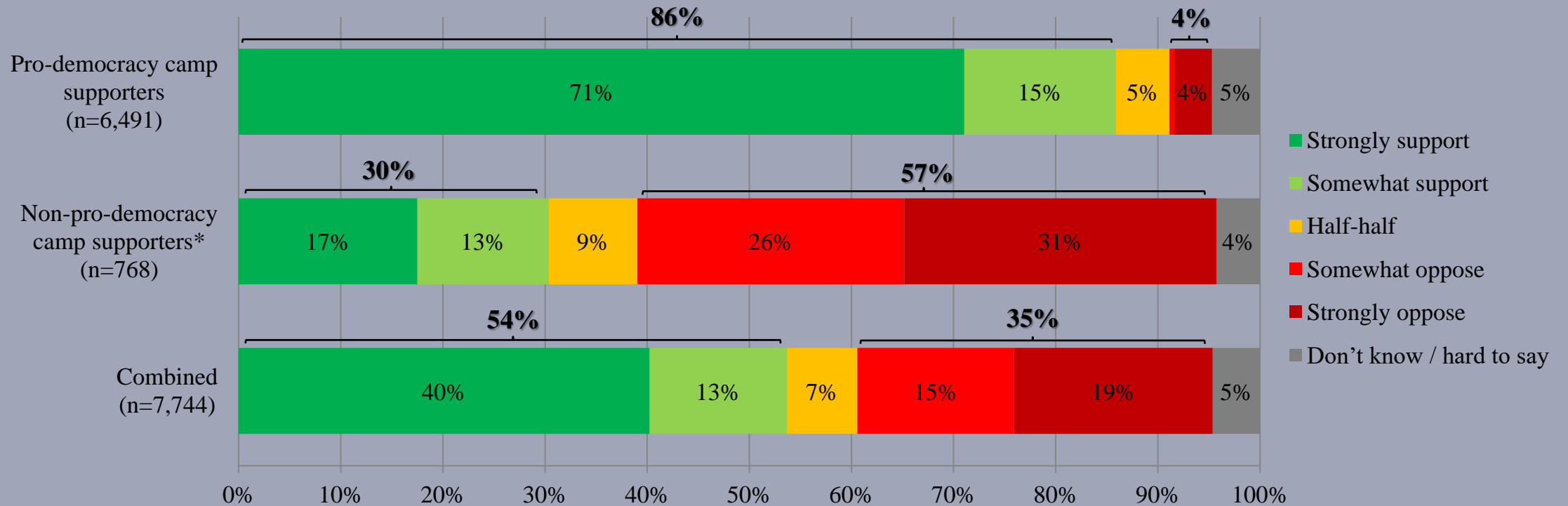
	Pro-democracy camp supporters (n=6,491)	Non-pro-democracy camp supporters* (n=768)	Combined (n=7,744)
Strongly support	71%	17%	40%
Somewhat support	15%	13%	13%
	86%	30%	54%
Half-half	5%	9%	7%
Somewhat oppose	<1%	26%	15%
Strongly oppose	4%	31%	19%
	4%	57%	35%
Don't know / hard to say	5%	4%	5%
Mean†	4.6	2.6	3.4

* Include: pro-establishment camp supporters, centrist supporters, no political inclination / politically neutral / do not belong to any camp

† The mean value is calculated by quantifying all individual responses into 1, 2, 3, 4, 5 marks according to their degree of support level, where 1 is the lowest and 5 the highest, and then calculate the sample mean.

Survey Result - “We Hongkongers” Panel Survey

- Latest survey period: 3-6/1/2022
- **Question: Q4 There is a view that the cessation of operation of Stand News and Citizen News will reduce the accountability and integrity (in terms of being corruption-free) of the Hong Kong government in future. How much do you support or oppose this point of view?**



* Include: pro-establishment camp supporters, centrist supporters, no political inclination / politically neutral / do not belong to any camp