



HONG KONG PUBLIC OPINION RESEARCH INSTITUTE
香 港 民 意 研 究 所

Hong Kong Public Opinion Research Institute

PopPanel Research Report No. 132 cum Community Democracy Project Research Report No. 81 cum Community Health Project Research Report No. 77

Survey Date: 20 February to 13 March 2022

Release Date: 15 March 2022

Copyright of this report was generated by the Hong Kong Public Opinion Research Institute (HKPORI) and opened to the world.

HKPORI proactively promotes open data, open technology and the free flow of ideas, knowledge and information.

The predecessor of HKPORI was the Public Opinion Programme at The University of Hong Kong (HKUPOP).

“PORI” in this publication may refer to HKPORI or HKUPOP as the case may be.

Research Background

Initiated by the Hong Kong Public Opinion Research Institute (HKPORI), the “Community Integration through Cooperation and Democracy, CICD” Project (or the “Community Democracy Project”) aims to provide a means for Hongkongers to re-integrate ourselves through mutual respect, rational deliberations, civilized discussions, personal empathy, social integration, and when needed, resolution of conflicts through democratic means. It is the rebuilding of our Hong Kong society starting from the community level following the spirit of science and democracy. For details, please visit: <https://www.pori.hk/research-reports-en/cicd.html?lang=en>.

The surveys of Community Democracy (CD) Project officially started on 3 January 2020, targeting members of “HKPOP Panel” established by HKPORI in July 2019, including “Hong Kong People Representative Panel” (Probability-based Panel) and “Hong Kong People Volunteer Panel” (Non-probability-based Panel). This report also represents Report No. 132 under HKPOP Panel survey series, as well as Report No. 81 under the CD Project survey series. Since CD Project aims to gauge the opinions of members in different communities, HKPORI needs to continuously recruit new panel members and map their profile with their respective constituency areas to form “HKPOP Community Panel” including “Community Representative Panel” and “Community Volunteer Panel” first, and then conduct the research.

In view of the outbreak of Novel Coronavirus (also known as “Wuhan Pneumonia”) in late January 2020, HKPORI kick-started the “Community Democracy Project: Community Health Module” or “Community Health Project” using a PopPanel survey design to study the public’s views on the epidemic and the Government’s relevant policies using small communities such as housing estates as the unit of analysis. The survey covers people’s views on their perceived chance of contracting pneumonia, appraisal on the government’s handling of the disease, impacts of the border closure, calls for strike by frontline medical staff, community outbreak, work-from-home arrangement, immigration controls, general use of face masks as well as the government’s implementation of relevant policies. This is the Report No. 77 under the Community Health Project survey series. The special feature of the Community Health Project is the lowering of respondents’ age bracket to 12 years old, in order to obtain more comprehensive samples.

HKPORI sent out emails to all panel members at the beginning of the survey, inviting them to fill in the questionnaire at the designated online platform. Members were allowed to make repeated submissions, while only the last submission of each individual member would be used for analysis.

Contact Information

Herewith the contact information of the “Community Health survey”:

Table 1: Detailed Contact Information

Survey method	Online survey
Target population	HKPOP Panel samples, namely Hong Kong People Representative Panel (Probability-based Panel) and Hong Kong People Volunteer Panel (Non-probability-based Panel)
Weighting method	Rim-weighted according to 1) gender-age distribution, educational attainment (highest level attended) distribution and economic activity status distribution of Hong Kong population from Census and Statistics Department; 2) appraisal of political condition and political inclination distribution from regular tracking surveys.
Date of survey	20 February, 3pm – 13 March, 3pm
Total sample size	7,350
Response rate	8.4%
Sampling error ^[1]	Sampling error of percentages at +/-1% at 95% confidence level

[1] All error figures in this release are calculated at 95% confidence level. “95% confidence level” means that if we were to repeat a certain survey 100 times with different random samples, we would expect 95 times having the population parameter within the respective error margins calculated. Because of sampling errors, when quoting percentages, journalists should refrain from reporting decimal places, whereas one decimal place can be used when quoting rating figures.

PopPanel Composition

Regarding data collection, survey data from both the Hong Kong People Representative Panel and Hong Kong People Volunteer Panel were collected in the form of online questionnaire.

Among them, the Hong Kong People Representative Panel comes from members of the “HKPOP Panel” recruited in regular random telephone surveys. HKPORI uses “HKPOP Panel” as a framework for conducting surveys for different research projects, any eligible family member in the household may be invited to participate in a specific research.

Meanwhile, members of the Hong Kong People Volunteer Panel are recruited online. Citizens only need to self-register in HKPORI website to participate in online questionnaires.

All panel data collected will be adjusted using rim-weighting, to minimize the effects of self-selection bias or participation bias. Details are documented in the Weighting Procedure section.

Response Rate

HKPORI adopts a set of contact definition in compliance with most international standards. Historically, the social research community in Hong Kong has developed its own set of contact rates, cooperation rates, response rates, and so on. HKPORI normally reports the “success rate” for online surveys.

The calculation of the success rates in this study refers to the following tables.

Table 2: Calculation of success rate of the HKPOP Panel (by HKPORI definition)

Success rate		
=	$\frac{\text{Successful cases}}{\text{Panel size of the HKPOP Panel}}$	x 100.0%
=	$\frac{7,350}{87,908}$	x 100.0%
=	8.4%	

Weighting Procedure

HKPORI has continuously adopted and enhanced its weighting method over the past few decades. For this survey, HKPORI adopts a “2 by 5 by 2 by 4 by 5 by 4” weighting procedure involving six variables, namely, gender, age, educational attainment, economic activity status, appraisal of political condition and political inclination. Basically, the raw data of practically all random telephone surveys conducted by HKPORI are rim-weighted by the figures obtained from the Hong Kong Census and Statistics Department so that the marginal distribution of the sample in terms of gender, age, educational attainment and economic activity status would match with that of the general population figures from the Hong Kong Census and Statistics Department. The marginal distribution of the sample in terms of appraisal of political condition and political inclination would match that of the general population in HKPORI’s regular tracking surveys. This rim-weighting method (sometimes called raking) is found to be the most practicable method in processing HKPORI’s survey data.

Specifically, the gender and age groupings used for weighting are as follows:

- Male 12-29
- Male 30-39
- Male 40-49
- Male 50-59
- Male 60 or above
- Female 12-29
- Female 30-39
- Female 40-49
- Female 50-59
- Female 60 or above

The educational attainments used for weighting are as follows:

- Secondary or below
- Tertiary or above

The economic activity statuses used for weighting are as follows:

- Working population / Others
- Home-makers / Housewives
- Students
- Retired person

The appraisals of political condition used for weighting are as follows:

- Very satisfied
- Quite satisfied
- Half-half // Don’t know / hard to say // Refused to answer
- Quite dissatisfied
- Very dissatisfied

The political inclinations used for weighting are as follows:

- Pro-democracy camp
- Pro-establishment camp
- Localist
- Centrist // Other // No political inclination / politically neutral / do not belong to any camp // Don’t know / hard to say // Refused to answer

Quantitative Analysis Results

Quantitative analysis results of the “Community Health survey”, after applying the weighting procedures, are as follows. Since 2022, survey results will be presented in combined figures (i.e. samples collected from the Hong Kong People Representative Panel and Hong Kong People Volunteer Panel) instead of separated by the panel type.

Table 3: Q1 Survey results; Survey period: 20/2-13/3/2022

Opinion Question ^[2]	Combined (Base=7,329)		
	Don't know / hard to say	Try to predict	Average
Q1 What do you think is your chance of being infected with novel coronavirus pneumonia , also known as Wuhan pneumonia, in the coming one month? [Logarithmic Scale]	21%	79%	30% ^[3]

[2] Answer options included: 0-10 rating scale, others and don't know / hard to say. Answer options changed from linear scale to logarithmic scale since Oct 2020. Questions asked remain unchanged while options of lower probability are further broken down and increase gradually in logarithmic scale.

[3] The difference between the figure and the result from the previous survey has gone beyond the sampling error at 95% confidence level, meaning that the change is statistically significant prima facie. However, whether the difference is

Chart 1: Q1 Combined Chart

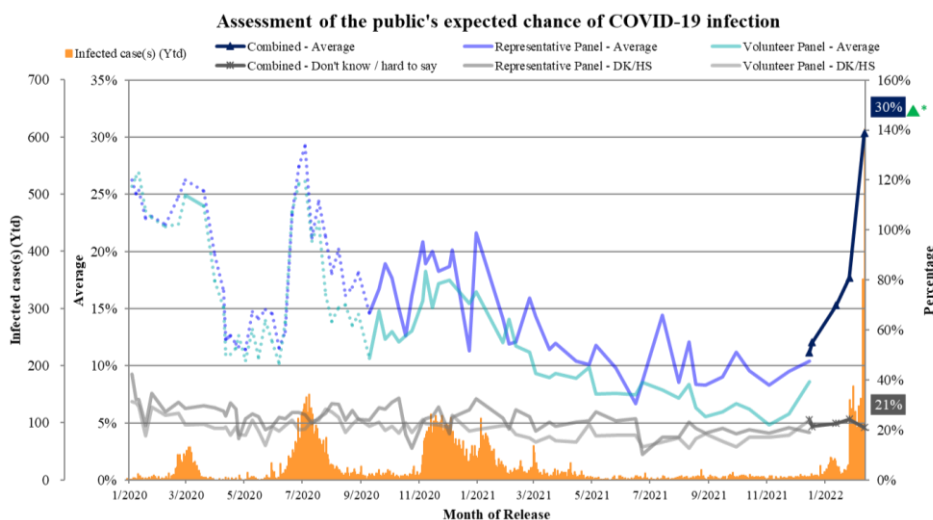
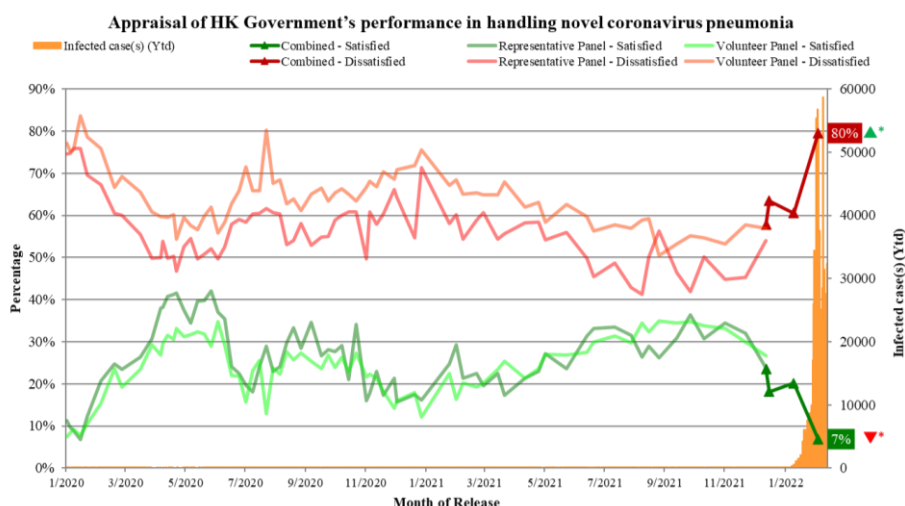


Table 4: Q2 Survey results; Survey period: 20/2-13/3/2022

Opinion Question ^[4]	Combined (Base=7,330)			
	Satisfied	Half-half	Dissatisfied	Mean ^[5]
Q2 How satisfied or dissatisfied are you with the government’s performance in handling novel coronavirus pneumonia?	7% ^[6]	12% ^[6]	80%^[6]	1.6 ^[6]

- [4] Answer options included: very much satisfied, somewhat satisfied, half-half, somewhat dissatisfied, very much dissatisfied and don’t know / hard to say.
- [5] The mean value is calculated by quantifying all individual responses into 1, 2, 3, 4, 5 marks according to their degree of satisfaction, where 1 is the lowest and 5 the highest, and then calculate the sample mean.
- [6] The difference between the figure and the result from the previous survey has gone beyond the sampling error at 95% confidence level, meaning that the change is statistically significant prima facie. However, whether the difference is statistically significant is not the same as whether they are practically useful or meaningful, and different weighting methods could have been applied in different surveys.

Chart 2: Q2 Combined Chart



Appendices

Appendix 1: Demographic profile of respondents

Gender:

	Raw sample		Weighted sample	
	Freq	%	Freq	%
Male	3,958	53.9%	3,464	47.1%
Female	3,371	45.9%	3,858	52.5%
Other	20	0.3%	28	0.4%
Total	7,349	100.0%	7,350	100.0%
Missing case(s)	1		<1	

Age:

	Raw sample		Weighted sample	
	Freq	%	Freq	%
12 - 29	1,148	15.6%	1,455	19.8%
30 - 39	1,799	24.5%	1,015	13.8%
40 - 49	1,746	23.8%	1,317	17.9%
50 - 59	1,647	22.4%	1,664	22.6%
60 or above	1,002	13.6%	1,898	25.8%
Total	7,342	100.0%	7,350	100.0%
Missing case(s)	0		0	

Education attainment:

	Raw sample		Weighted sample	
	Freq	%	Freq	%
Primary or below	12	0.2%	74	1.0%
Secondary	1,220	17.1%	2,917	40.8%
Tertiary or above	5,914	82.8%	4,155	58.2%
Total	7,146	100.0%	7,146	100.0%
Missing case(s)	204		204	

Occupation:

	Raw sample		Weighted sample	
	Freq	%	Freq	%
Administrators and professionals	2,732	38.3%	1,334	18.7%
Clerks and service workers	1,944	27.2%	2,074	29.1%
Workers	187	2.6%	263	3.7%
Students	310	4.3%	468	6.6%
Home-makers / housewives	309	4.3%	753	10.6%
Others	1,655	23.2%	2,245	31.5%
Total	7,137	100.0%	7,137	100.0%
Missing case(s)	213		213	

Political inclination:

	Raw sample		Weighted sample	
	Freq	%	Freq	%
Pro-democracy camp	3,465	48.4%	1,398	19.5%
Pro-establishment camp	51	0.7%	1,171	16.3%
Localist	2,664	37.2%	639	8.9%
Centrist	296	4.1%	1,297	18.1%
Others	75	1.0%	189	2.6%
No political inclination / politically neutral / don't belong to any camp	463	6.5%	2,097	29.3%
Don't know / hard to say	143	2.0%	373	5.2%
Total	7,157	100.0%	7,164	100.0%
Missing case(s)	193		186	

Appendix 2: Contact Information

Total valid samples	7,350
Survey period	20/2-13/3/2022
Success rate	8.4%
Questionnaires sent out	87,908
Questionnaires received	11,587
Ineligible samples	91
Invalid samples	3,679
Incomplete samples	467
Standard error	0.6%
Sampling error	1.1%

Appendix 3: Quantitative analyses

Q1 What do you think is your chance of being infected with the Coronavirus disease, also known as Wuhan pneumonia, in the coming one month? [Logarithmic Scale]	Total	
	Frequencies	Percentages (Base=7,329)
0% chance (Certainly not)	327	6.2%
0.001% chance (1 in 100,000)	368	6.8%
0.01% chance (1 in 10,000)	285	4.4%
0.1% chance (1 in 1,000)	315	4.2%
1% chance (1 in 100)	460	6.3%
5% chance (1 in 20)	345	2.8%
10% chance (1 in 10)	652	7.4%
15% chance }Small chance	102 }3,906	1.5% }51.1%
20% chance	373	4.9%
25% chance	96	1.5%
30% chance	319	3.6%
35% chance	49	0.2%
40% chance	183	1.4%
45% chance	32	0.2%
50% chance	977	10.6%
60% chance	171	1.7%
70% chance	265	2.7%
80% chance }Large chance	288 }1,314	3.9% }16.9%
90% chance	169	3.2%
100% chance (Certainly will)	421	5.4%
Others	6	0.1%
Don't know / hard to say	1,126	21.2%
Total	7,329	100.0%
Mean		3.04
Standard error of mean		<0.1
Median		1.50
Refuse to answer		21

Q2 How satisfied or dissatisfied are you with the government's performance in handling novel coronavirus pneumonia?	Total	
	Frequencies	Percentages (Base=7,330)
Very much satisfied	29	1.7%
Somewhat satisfied } Satisfied	25 } 54	5.2% } 6.8%
Half-half	88	11.8%
Somewhat dissatisfied	241	16.8%
Very much dissatisfied } Dissatisfied	6,932 } 7,173	62.7% } 79.5%
Don't know / hard to say	15	1.8%
Total	7,330	100.0%
Mean values		1.1
Standard error of mean		<0.1
Median		1.0
<i>Refuse to answer</i>		20
Net value (Satisfied- Dissatisfied)		-72.7%

Appendix 4: Survey questionnaire (20/2-13/3/2022)

We Hongkongers & Community Health Survey

Hong Kong Public Opinion Research Institute is politically neutral. We welcome different opinions. All personal data will be kept strictly confidential. You can fill in the questionnaire again to express your latest views. When we need to work on the data, your last submission will be used. For enquiries, please email us at panel@pori.hk.

Last updated: xxxx-xx-xx

Tentative next update: xxxx-xx-xx

***Required**

Eligibility Confirmation

Are you a Hong Kong resident aged 12 or above (i.e., currently residing in Hong Kong)? *

- Yes
- No

Community Health

How likely do you think it is that you will contract novel coronavirus pneumonia over the next one month?

(Please select the closest answer)

- | | | |
|--|----------------------------------|--|
| <input type="radio"/> 0% chance (Certainly not) | <input type="radio"/> 20% chance | <input type="radio"/> 70% chance |
| <input type="radio"/> 0.001% chance (1 in 100,000) | <input type="radio"/> 25% chance | <input type="radio"/> 80% chance |
| <input type="radio"/> 0.01% chance (1 in 10,000) | <input type="radio"/> 30% chance | <input type="radio"/> 90% chance |
| <input type="radio"/> 0.1% chance (1 in 1,000) | <input type="radio"/> 35% chance | <input type="radio"/> 100% chance (Certainly will) |
| <input type="radio"/> 1% chance (1 in 100) | <input type="radio"/> 40% chance | <input type="radio"/> _____ % chance |
| <input type="radio"/> 5% chance (1 in 20) | <input type="radio"/> 45% chance | <input type="radio"/> Don't know / hard to say |
| <input type="radio"/> 10% chance (1 in 10) | <input type="radio"/> 50% chance | |
| <input type="radio"/> 15% chance | <input type="radio"/> 60% chance | |

How satisfied or dissatisfied are you with the government's performance in handling novel coronavirus pneumonia?

- Very much satisfied
- Somewhat satisfied
- Half-half
- Somewhat dissatisfied

- Very much dissatisfied
- Don't know / hard to say

Other Opinions

Generally speaking, how satisfied or dissatisfied are you with the current in Hong Kong?

(Randomise the three conditions)

	Very much satisfied	Somewhat satisfied	Half-half	Somewhat dissatisfied	Very much dissatisfied	Don't know / hard to say
Political condition						
Economic condition						
Livelihood condition						

Personal Information

This section is about personal information. If you have already provided relevant information in this survey series and have nothing to add or update, you may skip these questions. We will use the past data you provided in this survey series for analysis.

- I have already provided my personal information, and has nothing to add or update ([skip questions on personal information](#))
- Provide / update personal information now

Gender

- Male
- Female
- Other

Age

- _____ years old
- 12 - 14
- 15 - 17
- 18 - 19
- 20 - 24
- 25 - 29
- 30 - 34
- 35 - 39
- 40 - 44
- 45 - 49
- 50 - 54
- 55 - 59
- 60 - 64
- 65 - 69
- 70 or above

Educational attainment

(The highest level attended, regardless of whether you have completed the course, including what you are attending)

- Primary or below
- Lower secondary (Secondary 1 to 3)
- Upper secondary (Secondary 4 to 7 / DSE / Yi Jin)
- Tertiary: non-degree course (including diploma / certificate / sub-degree course)
- Tertiary: bachelor degree course
- Tertiary: postgraduate school or above

Occupation

(Owner / self-employed / freelance / part time / civil servant are not valid answers, please answer according to the job nature or content)

- Administrator and professional
- Clerical and service worker
- Production worker
- Student
- Home-maker / housewife
- Retired person
- Unemployed / between jobs / other non-employed
- Other: _____

Which of the following best describes your political inclination?

(Randomise the four camps)

- Localist
- Pro-democracy camp
- Centrist
- Pro-establishment camp
- Other: _____
- No political inclination / politically neutral / do not belong to any camp
- Don't know / hard to say

End of Questionnaire

Thank you for completing the survey. For enquiries, please email us at panel@pori.hk.