



Hong Kong Public Opinion Research Institute

PopPanel Research Report No. 134 cum “We Hongkongers” Research Report No. 93

Survey Date: 21 March to 24 March 2022

Release Date: 25 March 2022

Copyright of this report was generated by the Hong Kong Public Opinion Research Institute (HKPORI) and opened to the world. HKPORI proactively promotes open data, open technology and the free flow of ideas, knowledge and information. The predecessor of HKPORI was the Public Opinion Programme at The University of Hong Kong (HKUPOP). “PORI” in this publication may refer to HKPORI or HKUPOP as the case may be..

Research Background

“We Hongkongers” is an initiative advocated by Hong Kong Public Opinion Research Institute (HKPORI), with the support of many members of the civic society. With reference to the petition website “We the People” hosted by the White House of the United States, “We Hongkongers” aims to reflect public sentiment by conducting scientific research on any issues raised by Hong Kong citizens: <https://www.pori.hk/research-reports-en/wehkers.html?lang=en>.

“We Hongkongers” Project officially started on 17 October 2019, in the form of intensive rolling surveys. A total of 12 reports were published as of 23 December 2019. In mid-May 2020, in response to the rapid changes in Hong Kong’s political and public sentiment, HKPORI redeveloped the “We Hongkongers” Project. Coupled with the rapid development of the “HKPOP Panel” established by PORI in July 2019, PORI decided to launch the “We Hongkongers Panel Survey” to further strengthen interaction with the public and as well as collect and analyze public opinion and there are 29 reports in total. In January 2021, PORI redeveloped the “We Hongkongers” Project again to strengthen the cooperation with non-governmental organizations, civil society organizations, concern groups and professional organizations, and the results will be released in the form of mini-forums to initiate policy discussions.

This report also represents Report No. 134 under HKPOP Panel survey series, as well as Report No. 93 under the “We Hongkongers” Project Series. The theme of this report is “Hong Kong Emigration Wave” under our “Social Observation Project”.

HKPORI sent out emails to all panel members at the beginning of the survey, inviting them to fill in the questionnaire at the designated online platform. Members were allowed to make repeated submissions, while only the last submission of each individual member would be used for analysis.

Contact Information

Herewith the contact information of the “We Hongkongers” Panel Survey:

Table 1: Detailed Contact Information

Survey method	Online survey
Target population	HKPOP Panel samples, namely Hong Kong People Representative Panel (Probability-based Panel) and Hong Kong People Volunteer Panel (Non-probability-based Panel)
Weighting method	Rim-weighted according to 1) gender-age distribution, educational attainment (highest level attended) distribution and economic activity status distribution of Hong Kong population from Census and Statistics Department; 2) appraisal of political condition and political inclination distribution from regular tracking surveys.
Date of survey	21 March, 3pm – 24 March, 3pm
Total sample size	6,723
Response rate	7.7%
Sampling error ^[1]	Sampling error of percentages at +/-1% at 95% confidence level

[1] All error figures in this release are calculated at 95% confidence level. “95% confidence level” means that if we were to repeat a certain survey 100 times with different random samples, we would expect 95 times having the population parameter within the respective error margins calculated. Because of sampling errors, when quoting percentages, journalists should refrain from reporting decimal places, whereas one decimal place can be used when quoting rating figures.

PopPanel Composition

Regarding data collection, survey data from both the Hong Kong People Representative Panel and Hong Kong People Volunteer Panel were collected in the form of online questionnaire.

Among them, the Hong Kong People Representative Panel comes from members of the “HKPOP Panel” recruited in regular random telephone surveys. HKPORI uses “HKPOP Panel” as a framework for conducting surveys for different research projects, any eligible family member in the household may be invited to participate in a specific research.

Meanwhile, members of the Hong Kong People Volunteer Panel are recruited online. Citizens only need to self-register in HKPORI website to participate in online questionnaires.

All panel data collected will be adjusted using rim-weighting, to minimize the effects of self-selection bias or participation bias. Details are documented in the Weighting Procedure section.

Response Rate

HKPORI adopts a set of contact definition in compliance with most international standards. Historically, the social research community in Hong Kong has developed its own set of contact rates, cooperation rates, response rates, and so on. HKPORI normally reports the "success rate" for online surveys.

The calculation of the success rates in this study refers to the following tables.

Table 2: Calculation of success rate of the HKPOP Panel (by HKPORI definition)

Success rate		
=	$\frac{\text{Successful cases}}{\text{Panel size of the HKPOP Panel}}$	x 100.0%
=	$\frac{6,723}{87,736}$	x 100.0%
=	7.7%	

Weighting Procedure

HKPORI has continuously adopted and enhanced its weighting method over the past few decades. For this survey, HKPORI adopts a "2 by 5 by 2 by 4 by 5 by 4" weighting procedure involving six variables, namely, gender, age, educational attainment, economic activity status, appraisal of political condition and political inclination. Basically, the raw data of practically all random telephone surveys conducted by HKPORI are rim-weighted by the figures obtained from the Hong Kong Census and Statistics Department so that the marginal distribution of the sample in terms of gender, age, educational attainment and economic activity status would match with that of the general population figures from the Hong Kong Census and Statistics Department. The marginal distribution of the sample in terms of appraisal of political condition and political inclination would match that of the general population in HKPORI's regular tracking surveys. This rim-weighting method (sometimes called raking) is found to be the most practicable method in processing HKPORI's survey data.

Specifically, the gender and age groupings used for weighting are as follows:

- Male 12-29
- Male 30-39
- Male 40-49
- Male 50-59
- Male 60 or above
- Female 12-29
- Female 30-39
- Female 40-49
- Female 50-59
- Female 60 or above

The educational attainments used for weighting are as follows:

- Secondary or below
- Tertiary or above

The economic activity statuses used for weighting are as follows:

- Working population / Others
- Home-makers / Housewives
- Students
- Retired person

The appraisals of political condition used for weighting are as follows:

- Very satisfied
- Quite satisfied
- Half-half // Don't know / hard to say // Refused to answer
- Quite dissatisfied
- Very dissatisfied

The political inclinations used for weighting are as follows:

- Pro-democracy camp
- Pro-establishment camp
- Localist
- Centrist // Other // No political inclination / politically neutral / do not belong to any camp // Don't know / hard to say // Refused to answer

Quantitative Analysis Results

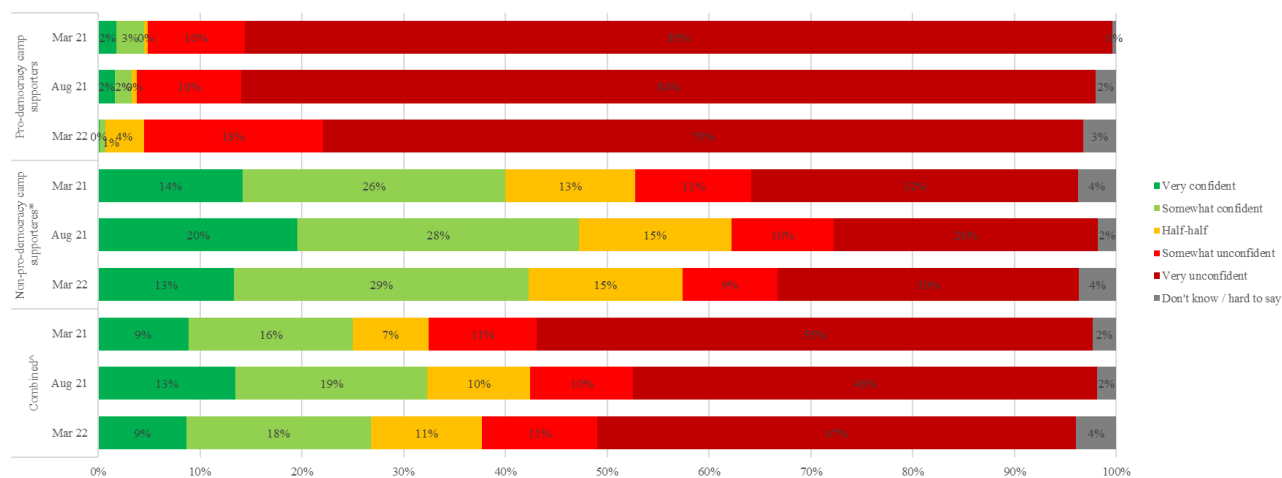
Quantitative analysis results of the “We Hongkongers” Panel Survey, after applying the standard weighting procedures, are as follows, all questions listed hereby are opinion questions:

Table 3: Q1 Survey results; Survey period: 21-24/3/2022

Q1 How confident are you in Hong Kong’s political environment in future?	Pro-democracy camp supporters (Base=5,613)	Non-pro-democracy camp supporters ^[2] (Base=730)	Combined ^[3] (Base=6,723)
Very confident	13%	36%	28%
Somewhat confident } Confident	21% } 34%	22% } 58%	21% } 49%
Half-half	27%	20%	23%
Somewhat unconfident	16%	9%	11%
Very unconfident } Unconfident	23% } 38%	12% } 20%	16% } 27%
Don’t know / hard to say	1%	1%	1%
Mean^[4]	2.9	3.6	3.3

- [2] Include: pro-establishment camp supporters, centrist supporters, no political inclination / politically neutral / do not belong to any camp
- [3] The aggregated figures come from adjusting the by-group weighted figures using ratio of “pan-democratic” vs “non-pan-democratic” collected in regular tracking survey.
- [4] The mean value is calculated by quantifying all individual responses into 1, 2, 3, 4, 5 marks according to their degree of confidence, where 1 is the lowest and 5 the highest, and then calculate the sample mean

Chart 1: Q1 Combined chart



* Include: pro-establishment camp supporters, centrist supporters, no political inclination / politically neutral / do not belong to any camp

Table 4: Q2 Survey results; Survey period: 21-24/3/2022

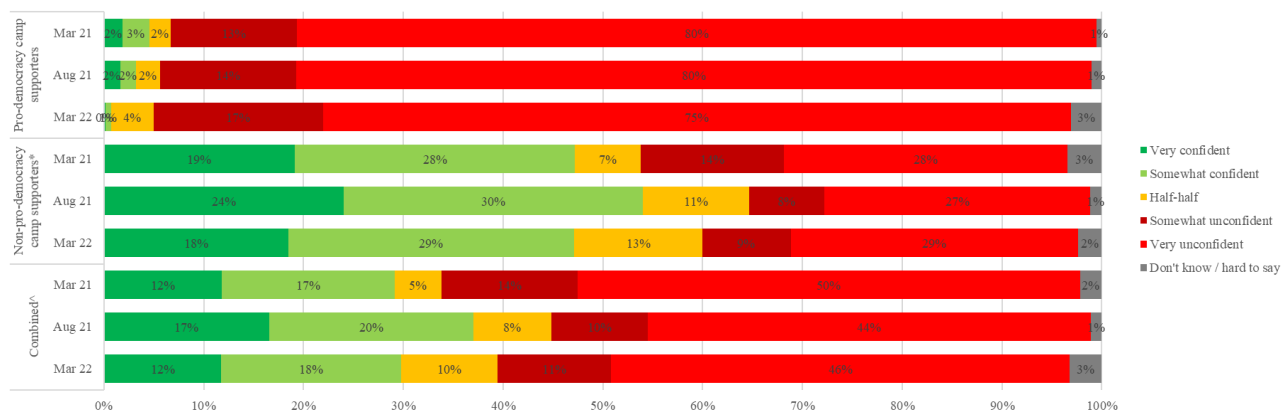
Q2 How confident are you in the level of personal freedom enjoyed by Hong Kong people in future?	Pro-democracy camp supporters (Base=5,604)	Non-pro-democracy camp supporters ^[5] (Base=728)	Combined ^[6] (Base=6,712)
Very confident	13%	36%	28%
Somewhat confident	21%	22%	21%
Half-half	27%	20%	23%
Somewhat unconfident	16%	9%	11%
Very unconfident	23%	12%	16%
Don't know / hard to say	1%	1%	1%
Mean^[7]	2.9	3.6	3.3

[5] Include: pro-establishment camp supporters, centrist supporters, no political inclination / politically neutral / do not belong to any camp

[6] The aggregated figures come from adjusting the by-group weighted figures using ratio of “pan-democratic” vs “non-pan-democratic” collected in regular tracking survey.

[7] The mean value is calculated by quantifying all individual responses into 1, 2, 3, 4, 5 marks according to their degree of confidence, where 1 is the lowest and 5 the highest, and then calculate the sample mean

Chart 2: Q2 Combined chart



* Include: pro-establishment camp supporters, centrist supporters, no political inclination / politically neutral / do not belong to any camp

Table 5: Q3 Survey results; Survey period: 21-24/3/2022

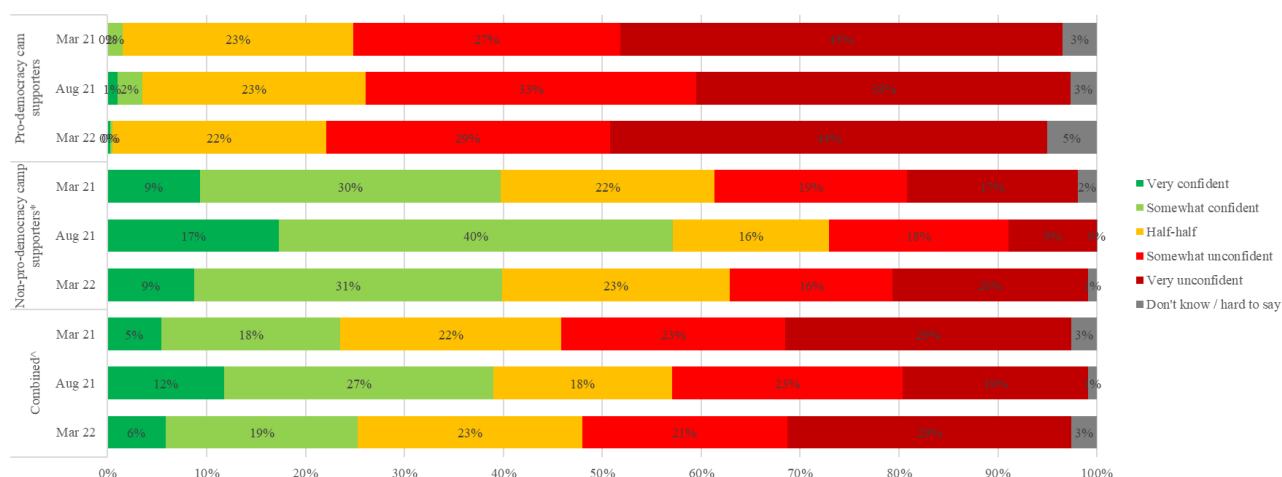
Q3 How confident are you in Hong Kong’s economic prospects?	Pro-democracy camp supporters (Base=5,604)	Non-pro-democracy camp supporters ^[8] (Base=729)	Combined ^[9] (Base=6,713)
Very confident	13%	36%	28%
Somewhat confident	21%	22%	21%
Half-half	27%	20%	23%
Somewhat unconfident	16%	9%	11%
Very unconfident	23%	12%	16%
Don’t know / hard to say	1%	1%	1%
Mean^[10]	2.9	3.6	3.3

[8] Include: pro-establishment camp supporters, centrist supporters, no political inclination / politically neutral / do not belong to any camp

[9] The aggregated figures come from adjusting the by-group weighted figures using ratio of “pan-democratic” vs “non-pan-democratic” collected in regular tracking survey.

[10] The mean value is calculated by quantifying all individual responses into 1, 2, 3, 4, 5 marks according to their degree of confidence, where 1 is the lowest and 5 the highest, and then calculate the sample mean

Chart 3: Q3 Combined chart



* Include: pro-establishment camp supporters, centrist supporters, no political inclination / politically neutral / do not belong to any camp

Table 6: Q4 Survey results; Survey period: 21-24/3/2022

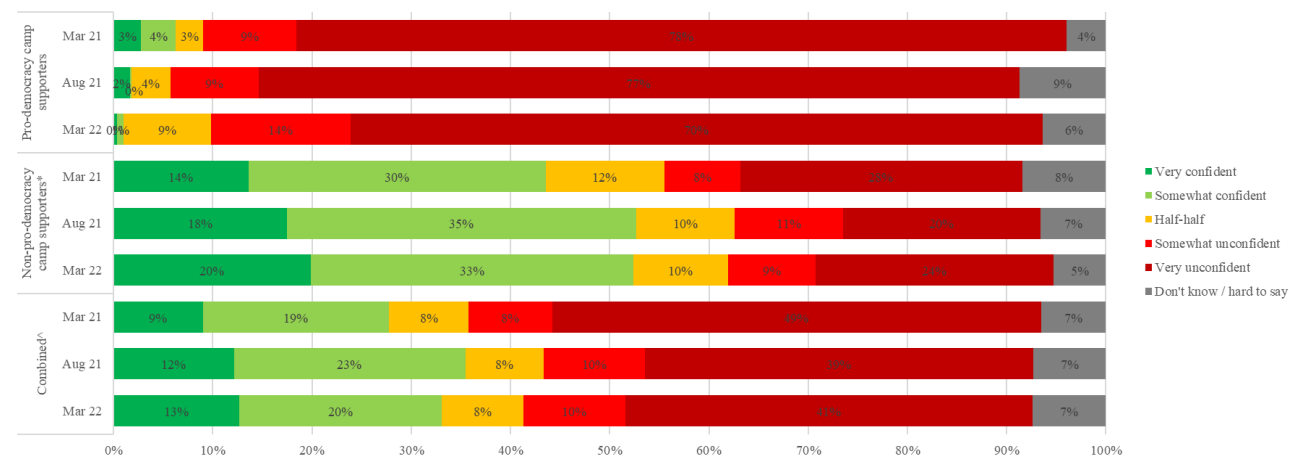
Q4 How confident are you in Mainland China’s political environment in future?	Pro-democracy camp supporters (Base=5,611)	Non-pro-democracy camp supporters ^[11] (Base=729)	Combined ^[12] (Base=6,720)
Very confident	<1%	20%	13%
Somewhat confident } Confident	1% } 1%	33% } 52%	20% } 33%
Half-half	9%	10%	8%
Somewhat unconfident	14%	9%	10%
Very unconfident } Unconfident	70% } 84%	24% } 33%	41% } 51%
Don’t know / hard to say	6%	5%	7%
Mean^[13]	1.4	3.2	2.5

[11] Include: pro-establishment camp supporters, centrist supporters, no political inclination / politically neutral / do not belong to any camp

[12] The aggregated figures come from adjusting the by-group weighted figures using ratio of “pan-democratic” vs “non-pan-democratic” collected in regular tracking survey.

[13] The mean value is calculated by quantifying all individual responses into 1, 2, 3, 4, 5 marks according to their degree of confidence, where 1 is the lowest and 5 the highest, and then calculate the sample mean

Chart 4: Q4 Combined chart



* Include: pro-establishment camp supporters, centrist supporters, no political inclination / politically neutral / do not belong to any camp

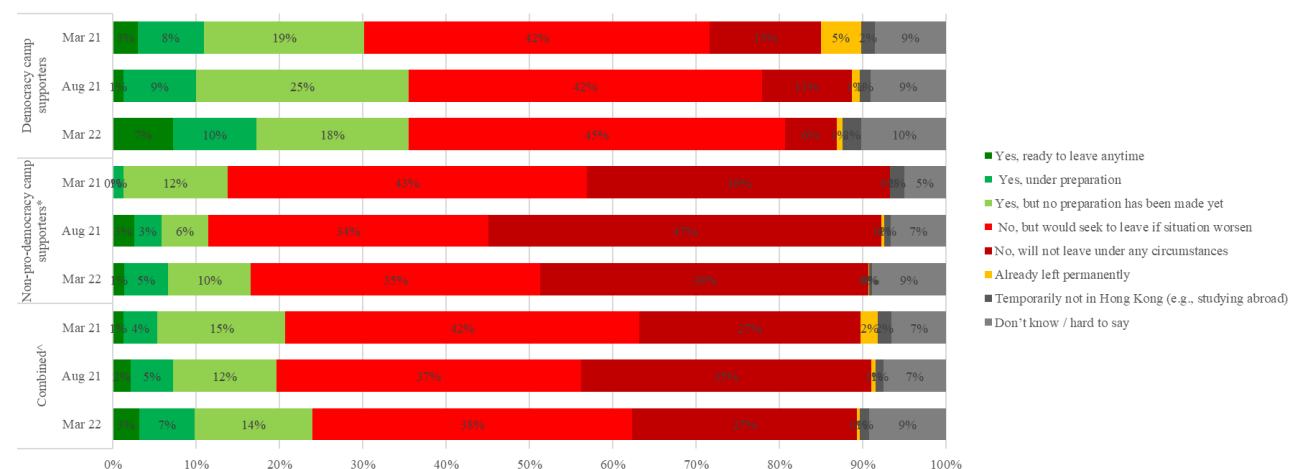
Table 7: Q5 Survey results, by camp type; Survey period: 21-24/3/2022

Q5 Do you currently have any plan to leave Hong Kong permanently?	Pro-democracy camp supporters (Base=5,611)	Non-pro-democracy camp supporters ^[14] (Base=730)	Combined ^[15] (Base=6,721)
Yes, ready to leave anytime	7%	1%	3%
Yes, under preparation	10%	5%	7%
Yes, but no preparation has been made yet	18%	10%	14%
No, but would seek to leave if situation worsens to an unacceptable level	45%	35%	38%
No, will not leave under any circumstances	6%	39%	27%
Already left permanently	1%	<1%	<1%
Temporarily not in Hong Kong (e.g., studying abroad)	2%	<1%	1%
Don't know / hard to say	10%	9%	9%

[14] Include: pro-establishment camp supporters, centrist supporters, no political inclination / politically neutral / do not belong to any camp

[15] The aggregated figures come from adjusting the by-group weighted figures using ratio of “pan-democratic” vs “non-pan-democratic” collected in regular tracking survey.

Chart 7: Q5 Combined chart



* Include: pro-establishment camp supporters, centrist supporters, no political inclination / politically neutral / do not belong to any camp

Table 8: Q6 Survey results, by camp type; Survey period: 21-24/3/2022

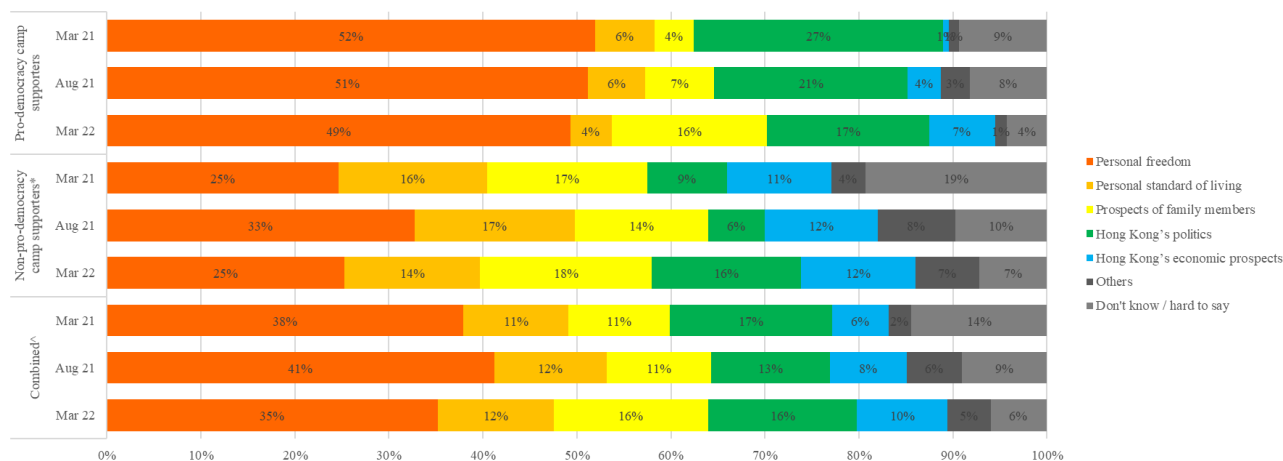
Q6 Worsening of condition in which of the following aspects would have the strongest effect of causing you to seek to leave Hong Kong permanently? ^[16]	Pro-democracy camp supporters (Base=5,263)	Non-pro-democracy camp supporters ^[17] (Base=601)	Combined ^[18] (Base=6,215)
Personal freedom	49%	25%	35%
Personal standard of living	4%	14%	12%
Prospects of family members	16%	18%	16%
Hong Kong’s politics	17%	16%	16%
Hong Kong’s economic prospects	7%	12%	10%
Others	1%	7%	5%
Don’t know / hard to say	4%	7%	6%

[16] Excluding those answered “no, will not leave under any circumstances” or “already left permanently” in Q5

[17] Include: pro-establishment camp supporters, centrist supporters, no political inclination / politically neutral / do not belong to any camp

[18] The aggregated figures come from adjusting the by-group weighted figures using ratio of “pan-democratic” vs “non-pan-democratic” collected in regular tracking survey.

Chart 6: Q6 Combined chart



* Include: pro-establishment camp supporters, centrist supporters, no political inclination / politically neutral / do not belong to any camp

Table 9: Q7a Survey results, by camp type; Survey period: 21-24/3/2022

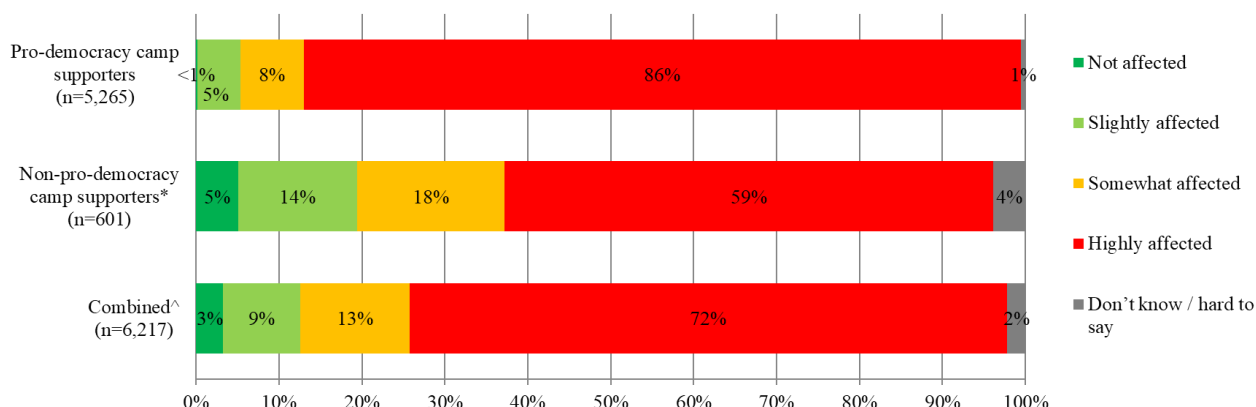
Q7a If the condition in personal freedom / personal safety worsens, how much will it affect your desire to leave Hong Kong permanently? ^[19]	Pro-democracy camp supporters (Base=5,265)	Non-pro-democracy camp supporters^[20] (Base=601)	Combined^[21] (Base=6,217)
Not affected	<1%	5%	3%
Slightly affected	5%	14%	9%
Somewhat affected	8%	18%	13%
Highly affected	86%	59%	72%
Don't know / hard to say	1%	4%	2%

[19] Excluding those answered “no, will not leave under any circumstances” or “already left permanently” in Q5

[20] Include: pro-establishment camp supporters, centrist supporters, no political inclination / politically neutral / do not belong to any camp

[21] The aggregated figures come from adjusting the by-group weighted figures using ratio of “pan-democratic” vs “non-pan-democratic” collected in regular tracking survey.

Chart 7: Q7a Combined chart



* Include: pro-establishment camp supporters, centrist supporters, no political inclination / politically neutral / do not belong to any camp

Table 10: Q7b Survey results, by camp type; Survey period: 21-24/3/2022

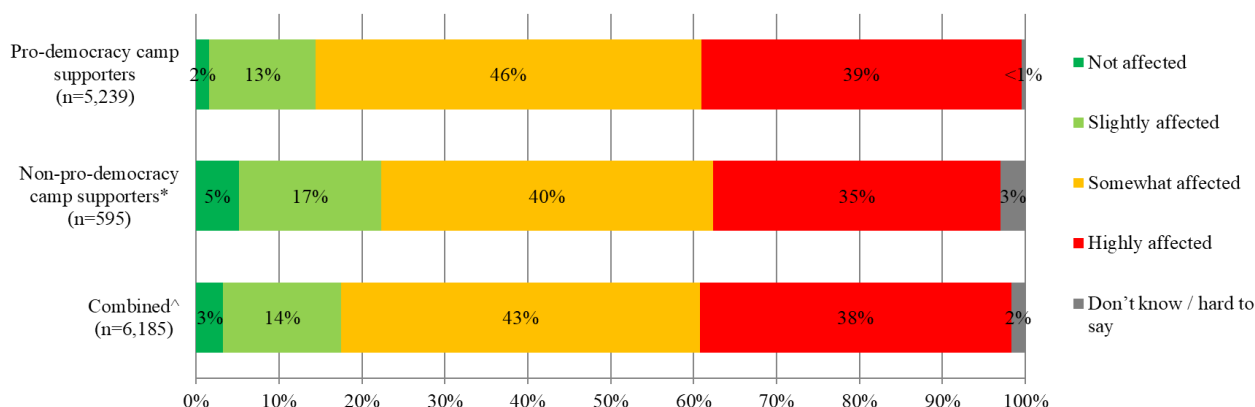
Q7b If the condition in personal standard of living worsens, how much will it affect your desire to leave Hong Kong permanently? ^[22]	Pro-democracy camp supporters (Base=5,239)	Non-pro-democracy camp supporters^[23] (Base=595)	Combined^[24] (Base=6,185)
Not affected	2%	5%	3%
Slightly affected	13%	17%	14%
Somewhat affected	46%	40%	43%
Highly affected	39%	35%	38%
Don't know / hard to say	<1%	3%	2%

[22] Excluding those answered “no, will not leave under any circumstances” or “already left permanently” in Q5

[23] Include: pro-establishment camp supporters, centrist supporters, no political inclination / politically neutral / do not belong to any camp

[24] The aggregated figures come from adjusting the by-group weighted figures using ratio of “pan-democratic” vs “non-pan-democratic” collected in regular tracking survey.

Chart 8: Q7b Combined chart



* Include: pro-establishment camp supporters, centrist supporters, no political inclination / politically neutral / do not belong to any camp

Table 11: Q7c Survey results, by camp type; Survey period: 21-24/3/2022

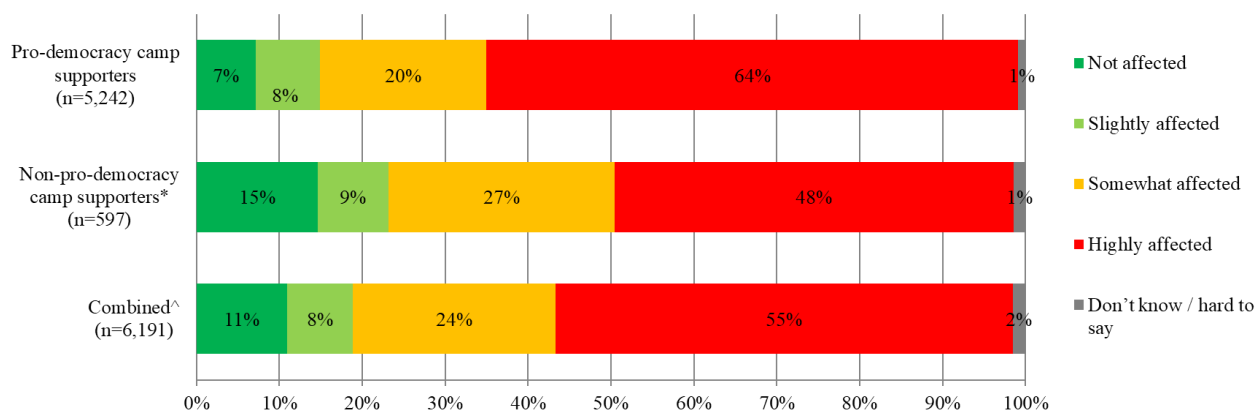
Q7c If the condition in prospects of family members / education for the next generation worsens, how much will it affect your desire to leave Hong Kong permanently? [25]	Pro-democracy camp supporters (Base=5,242)	Non-pro-democracy camp supporters ^[26] (Base=597)	Combined ^[27] (Base=6,191)
Not affected	7%	15%	11%
Slightly affected	8%	9%	8%
Somewhat affected	20%	27%	24%
Highly affected	64%	48%	55%
Don't know / hard to say	1%	1%	2%

[25] Excluding those answered “no, will not leave under any circumstances” or “already left permanently” in Q5

[26] Include: pro-establishment camp supporters, centrist supporters, no political inclination / politically neutral / do not belong to any camp

[27] The aggregated figures come from adjusting the by-group weighted figures using ratio of “pan-democratic” vs “non-pan-democratic” collected in regular tracking survey.

Chart 9: Q7c Combined chart



* Include: pro-establishment camp supporters, centrist supporters, no political inclination / politically neutral / do not belong to any camp

Table 12: Q7d Survey results, by camp type; Survey period: 21-24/3/2022

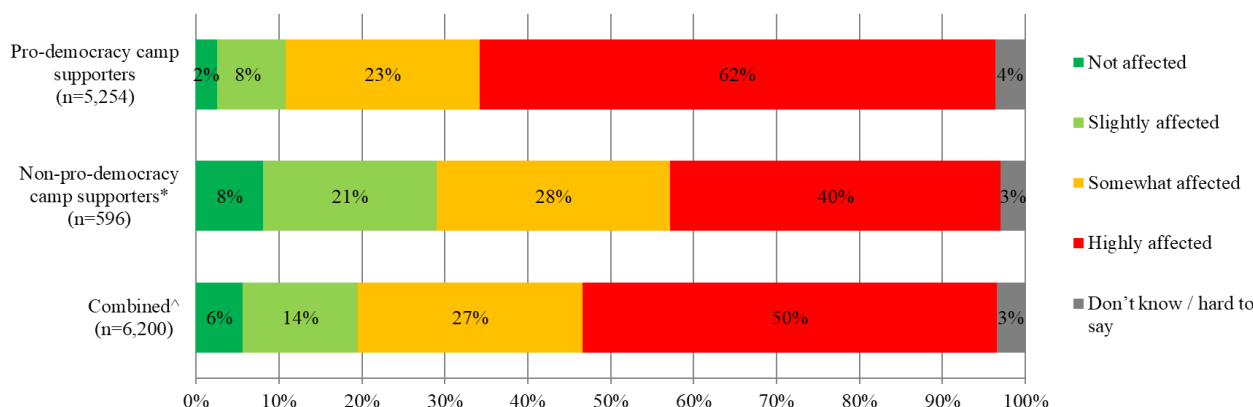
Q7d If the condition in Hong Kong’s politics worsens, how much will it affect your desire to leave Hong Kong permanently? ^[28]	Pro-democracy camp supporters (Base=5,254)	Non-pro-democracy camp supporters^[29] (Base=596)	Combined^[30] (Base=6,200)
Not affected	2%	8%	6%
Slightly affected	8%	21%	14%
Somewhat affected	23%	28%	27%
Highly affected	62%	40%	50%
Don’t know / hard to say	8%	10%	9%

[28] Excluding those answered “no, will not leave under any circumstances” or “already left permanently” in Q5

[29] Include: pro-establishment camp supporters, centrist supporters, no political inclination / politically neutral / do not belong to any camp

[30] The aggregated figures come from adjusting the by-group weighted figures using ratio of “pan-democratic” vs “non-pan-democratic” collected in regular tracking survey.

Chart 10: Q7d Combined chart



* Include: pro-establishment camp supporters, centrist supporters, no political inclination / politically neutral / do not belong to any camp

Table 13: Q7e Survey results, by camp type; Survey period: 21-24/3/2022

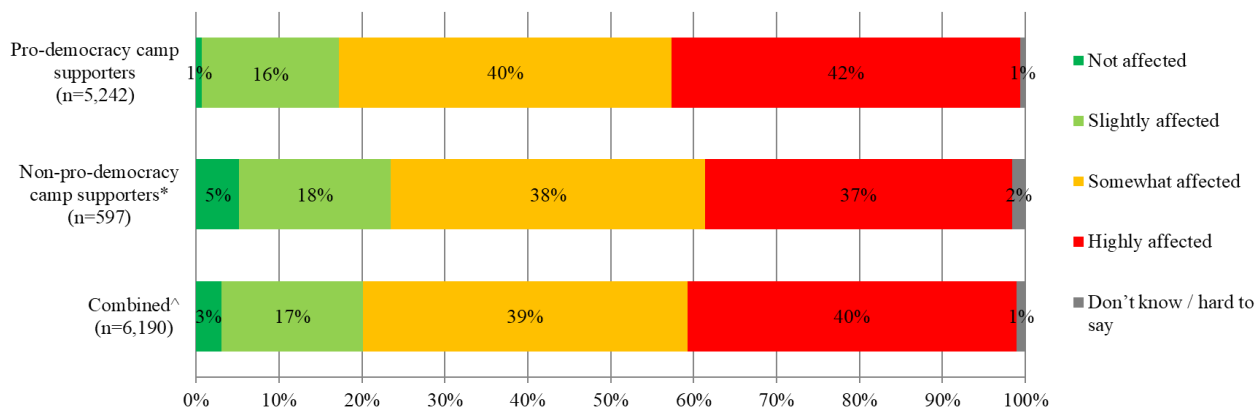
Q7e If the condition in Hong Kong’s economic prospects worsens, how much will it affect your desire to leave Hong Kong permanently? ^[31]	Pro-democracy camp supporters (Base=5,242)	Non-pro-democracy camp supporters ^[32] (Base=597)	Combined ^[33] (Base=6,190)
Not affected	51%	33%	41%
Slightly affected	21%	6%	13%
Somewhat affected	6%	17%	12%
Highly affected	7%	14%	11%
Don’t know / hard to say	8%	10%	9%

[31] Excluding those answered “no, will not leave under any circumstances” or “already left permanently” in Q5

[32] Include: pro-establishment camp supporters, centrist supporters, no political inclination / politically neutral / do not belong to any camp

[33] The aggregated figures come from adjusting the by-group weighted figures using ratio of “pan-democratic” vs “non-pan-democratic” collected in regular tracking survey.

Chart 11: Q7e Combined chart



* Include: pro-establishment camp supporters, centrist supporters, no political inclination / politically neutral / do not belong to any camp

Table 14: Q7f Survey results, by camp type; Survey period: 21-24/3/2022

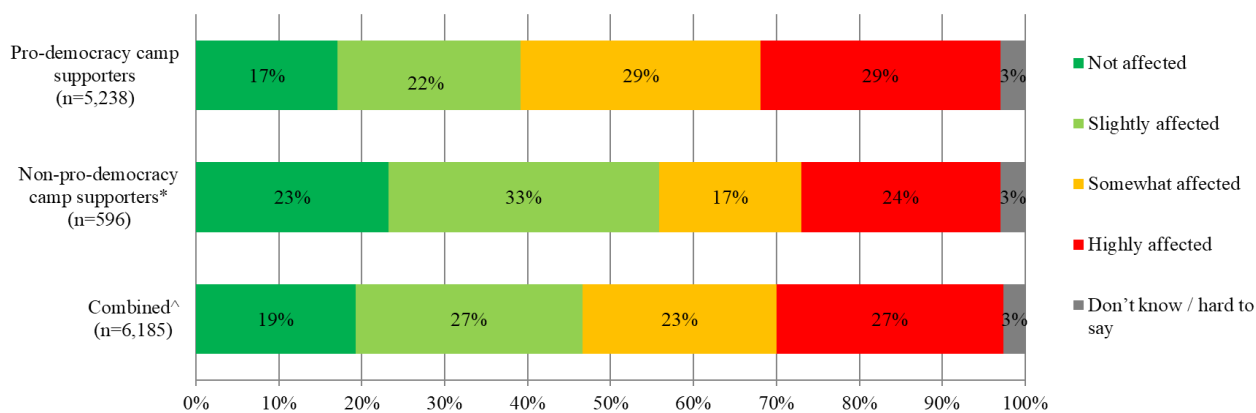
Q7f If the condition in Hong Kong’s epidemic situation and anti-epidemic measures worsens, how much will it affect your desire to leave Hong Kong permanently? [34]	Pro-democracy camp supporters (Base=5,238)	Non-pro-democracy camp supporters ^[35] (Base=596)	Combined ^[36] (Base=6,185)
Not affected	51%	33%	41%
Slightly affected	21%	6%	13%
Somewhat affected	6%	17%	12%
Highly affected	7%	14%	11%
Don’t know / hard to say	8%	10%	9%

[34] Excluding those answered “no, will not leave under any circumstances” or “already left permanently” in Q5

[35] Include: pro-establishment camp supporters, centrist supporters, no political inclination / politically neutral / do not belong to any camp

[36] The aggregated figures come from adjusting the by-group weighted figures using ratio of “pan-democratic” vs “non-pan-democratic” collected in regular tracking survey.

Chart 12: Q7f Combined chart



* Include: pro-establishment camp supporters, centrist supporters, no political inclination / politically neutral / do not belong to any camp

Appendices

Appendix 1: Demographic profile of respondents

Gender:	Pro-democracy camp supporters				Non-pro-democracy camp supporters #				Total			
	Raw sample		Weighted sample		Raw sample		Weighted sample		Raw sample		Weighted sample	
	Freq	%	Freq	%	Freq	%	Freq	%	Freq	%	Freq	%
Male	2,843	54.0%	568	32.4%	365	53.8%	2,058	54.2%	3,381	53.5%	2,978	47.1%
Female	2,408	45.8%	1,180	67.3%	310	45.7%	1,734	45.7%	2,922	46.2%	3,319	52.5%
Other	11	0.2%	4	0.2%	3	0.4%	5	0.1%	19	0.3%	26	0.4%
Total	5,262	100.0%	1,752	100.0%	678	100.0%	3,797	100.0%	6,322	100.0%	6,323	100.0%
Missing case(s)	1		<1		0		0		2		<1	

Age:	Pro-democracy camp supporters				Non-pro-democracy camp supporters #				Total			
	Raw sample		Weighted sample		Raw sample		Weighted sample		Raw sample		Weighted sample	
	Freq	%	Freq	%	Freq	%	Freq	%	Freq	%	Freq	%
12 - 29	764	14.5%	446	25.4%	43	6.3%	503	13.3%	879	13.9%	1,251	19.8%
30 - 39	1,301	24.8%	211	12.0%	128	18.9%	515	13.6%	1,526	24.2%	822	13.0%
40 - 49	1,289	24.5%	331	18.9%	156	23.0%	710	18.7%	1,543	24.4%	1,192	18.9%
50 - 59	1,185	22.5%	414	23.7%	197	29.1%	974	25.7%	1,464	23.2%	1,530	24.2%
60 or above	716	13.6%	350	20.0%	154	22.7%	1,095	28.8%	904	14.3%	1,528	24.2%
Total	5,255	100.0%	1,751	100.0%	678	100.0%	3,797	100.0%	6,316	100.0%	6,323	100.0%
Missing case(s)	8		1		0		0		8		1	

Education attainment:	Pro-democracy camp supporters				Non-pro-democracy camp supporters #				Total			
	Raw sample		Weighted sample		Raw sample		Weighted sample		Raw sample		Weighted sample	
	Freq	%	Freq	%	Freq	%	Freq	%	Freq	%	Freq	%
Primary or below	9	0.2%	3	0.2%	4	0.6%	41	1.1%	14	0.2%	47	0.8%
Secondary	799	15.2%	822	46.9%	155	23.0%	1,368	36.3%	982	16.0%	2,315	37.8%
Tertiary or above	4,446	84.6%	927	52.9%	516	76.4%	2,362	62.6%	5,134	83.8%	3,768	61.5%
Total	5,254	100.0%	1,752	100.0%	675	100.0%	3,771	100.0%	6,130	100.0%	6,130	100.0%
Missing case(s)	9		1		3		26		194		194	

Occupation:	Pro-democracy camp supporters				Non-pro-democracy camp supporters #				Total			
	Raw sample		Weighted sample		Raw sample		Weighted sample		Raw sample		Weighted sample	
	Freq	%	Freq	%	Freq	%	Freq	%	Freq	%	Freq	%
Administrators and professionals	2,133	40.6%	254	14.5%	244	36.1%	845	22.3%	2,440	39.9%	1,202	19.6%
Clerks and service workers	1,405	26.8%	457	26.1%	163	24.1%	1,032	27.2%	1,623	26.5%	1,633	26.7%
Workers	109	2.1%	43	2.5%	25	3.7%	233	6.1%	138	2.3%	310	5.1%
Students	205	3.9%	138	7.9%	13	1.9%	177	4.7%	228	3.7%	401	6.6%
Home-makers / housewives	221	4.2%	335	19.2%	26	3.8%	275	7.3%	255	4.2%	646	10.6%
Others	1,175	22.4%	521	29.8%	205	30.3%	1,230	32.4%	1,437	23.5%	1,930	31.5%
Total	5,248	100.0%	1,748	100.0%	676	100.0%	3,792	100.0%	6,121	100.0%	6,121	100.0%
Missing case(s)	15		4		2		5		203		203	

Political inclination:	Pro-democracy camp supporters				Non-pro-democracy camp supporters #				Total			
	Raw sample		Weighted sample		Raw sample		Weighted sample		Raw sample		Weighted sample	
	Freq	%	Freq	%	Freq	%	Freq	%	Freq	%	Freq	%
Pro-democracy camp	3,072	58.4%	1,203	68.6%	0	0.0%	0	0.0%	3,072	50.1%	1,203	19.6%
Pro-establishment camp	0	0.0%	0	0.0%	43	6.3%	1,008	26.5%	43	0.7%	1,008	16.4%
Localist	2,191	41.6%	550	31.4%	0	0.0%	0	0.0%	2,191	35.7%	550	9.0%
Centrist	0	0.0%	0	0.0%	232	34.2%	935	24.6%	232	3.8%	935	15.2%
Others	0	0.0%	0	0.0%	0	0.0%	0	0.0%	66	1.1%	84	1.4%
No political inclination / politically neutral / don't belong to any camp	0	0.0%	0	0.0%	403	59.4%	1,854	48.8%	403	6.6%	1,854	30.2%
Don't know / hard to say	0	0.0%	0	0.0%	0	0.0%	0	0.0%	128	2.1%	500	8.1%
Total	5,263	100.0%	1,753	100.0%	678	100.0%	3,797	100.0%	6,135	100.0%	6,134	100.0%
Missing case(s)	0		0		0		0		189		190	

Appendix 2: Contact Information

Total valid samples	6,324
Survey period	21-24/3/2022
Success rate	7.2%
Questionnaires sent out	87,907
Questionnaires received	6,787
Ineligible samples	58
Invalid samples	0
Incomplete samples	405
Standard error	0.6%
Sampling error	1.2%

Appendix 3: Quantitative analyses

Q1 Survey results, by camp type; Survey period: 21-24/3/2022

Q1 Have you ever been confirmed to have COVID-19 (including a positive result from a rapid test)?	Pro-democracy camp supporters	Non-pro-democracy camp supporters #	Total
	Percentages (Base=5,258)	Percentages (Base=677)	Percentages (Base=6,318)
Yes, fully recovered	12.7%	14.3%	14.8%
Yes, not yet fully recovered	4.2%	6.5%	5.8%
No	83.2%	79.2%	79.3%
Total	100.0%	100.0%	100.0%
<i>Refuse to answer</i> ⁸	5	1	6

Including pro-establishment camp supporters, centrist supporters, no political inclination / politically neutral / do not belong to any camp

Q2 Survey results, by camp type; Survey period: 21-24/3/2022

Q2 Assume that you and your family living with you have been infected with COVID-19 and have to undergo home quarantine. Which of the following best describes the current state of your household supplies?	Pro-democracy camp supporters	Non-pro-democracy camp supporters #	Total
	Percentages	Percentages	Percentages
	(Base=5,258)	(Base=678)	(Base=6,317)
Having all the supplies needed	19.0%	19.3%	19.3%
Having most of the supplies, and what is missing is not that important	49.3%	45.2%	45.9%
Having most of the supplies, but what is missing is important	11.4%	12.9%	12.7%
Lacking a lot of supplies	16.1%	14.1%	14.5%
Not sure what is needed / don't know / hard to say	4.1%	8.3%	7.5%
Total	100.0%	100.0%	100.0%
<i>Refuse to answer</i>	5	0	5

Including pro-establishment camp supporters, centrist supporters, no political inclination / politically neutral / do not belong to any camp

Q3a Survey results, by camp type; Survey period: 21-24/3/2022

Q3a Assuming that the government has decided to implement compulsory universal testing, how much do you support or oppose the implementation of the following measures at the same time? [Require people to take rapid tests daily]	Pro-democracy camp supporters	Non-pro-democracy camp supporters #	Total
	Percentages	Percentages	Percentages
	(Base=5,259)	(Base=675)	(Base=6,316)
Strongly support	12.9%	36.2%	28.4%
Somewhat support	20.7%	22.3%	20.6%
Half-half	27.3%	20.1%	23.0%
Somewhat oppose	15.6%	8.5%	10.7%
Strongly oppose	22.8%	11.8%	16.1%
Don't know / hard to say	0.6%	1.1%	1.2%
Total	100.0%	100.0%	100.0%
Mean values	2.9	3.6	3.3
Standard error of mean	<0.1	<0.1	<0.1
Median	3.0	4.0	3.0
Refuse to answer	4	3	7
Net value (Support- Oppose)	-4.8%	+38.2%	+22.3%

Including pro-establishment camp supporters, centrist supporters, no political inclination / politically neutral / do not belong to any camp

Q3b Survey results, by camp type; Survey period: 21-24/3/2022

Q3b Assuming that the government has decided to implement compulsory universal testing, how much do you support or oppose the implementation of the following measures at the same time? [Restrict people from going out unnecessarily]	Pro-democracy camp supporters	Non-pro-democracy camp supporters #	Total
	Percentages	Percentages	Percentages
	(Base=5,258)	(Base=675)	(Base=6,315)
Strongly support }Support	13.7%	37.6%	28.6%
Somewhat support	18.5%	26.2%	22.9%
Half-half	25.7%	12.9%	17.7%
Somewhat oppose }Oppose	14.5%	4.8%	7.8%
Strongly oppose	26.9%	16.3%	20.5%
Don't know / hard to say	0.8%	2.2%	2.4%
Total	100.0%	100.0%	100.0%
Mean values	2.8	3.7	3.3
Standard error of mean	<0.1	<0.1	<0.1
Median	3.0	4.0	4.0
Refuse to answer	5	3	8
Net value (Support- Oppose)	-9.2%	+42.7%	+23.1%

Including pro-establishment camp supporters, centrist supporters, no political inclination / politically neutral / do not belong to any camp

Q3c Survey results, by camp type; Survey period: 21-24/3/2022

Q3c Assuming that the government has decided to implement compulsory universal testing, how much do you support or oppose the implementation of the following measures at the same time? [Require all confirmed patients to be admitted to isolation facilities or hospitals]	Pro-democracy camp supporters	Non-pro-democracy camp supporters #	Total
	Percentages (Base=5,257)	Percentages (Base=678)	Percentages (Base=6,316)
Strongly support }Support	7.2%	23.1%	16.4%
Somewhat support	12.6%	36.1%	25.9%
Half-half	19.4%	25.2%	24.0%
Somewhat oppose }Oppose	16.1%	10.3%	12.7%
Strongly oppose	66.9%	33.4%	46.3%
Don't know / hard to say	1.1%	5.2%	3.9%
Total	100.0%	100.0%	100.0%
Mean values	2.0	3.0	2.6
Standard error of mean	<0.1	<0.1	<0.1
Median	1.0	3.0	3.0
Refuse to answer	6	0	6
Net value (Support- Oppose)	-54.3%	+2.7%	-20.4%

Including pro-establishment camp supporters, centrist supporters, no political inclination / politically neutral / do not belong to any camp

Q4 Survey results, by camp type; Survey period: 21-24/3/2022

Q4 How much will your household income be affected if people are restricted from going out during the compulsory universal testing period?	Pro-democracy camp supporters	Non-pro-democracy camp supporters #	Total
	Percentages (Base=5,258)	Percentages (Base=678)	Percentages (Base=6,319)
Highly affected	21.4%	11.9%	17.7%
Somewhat affected	26.3%	21.3%	22.6%
Slightly affected	14.5%	29.1%	23.2%
Not affected	34.4%	34.5%	33.2%
Don't know / hard to say	3.5%	3.2%	3.4%
Total	100.0%	100.0%	100.0%
<i>Refuse to answer</i>	5	0	5

Including pro-establishment camp supporters, centrist supporters, no political inclination / politically neutral / do not belong to any camp

Q5 Survey results, by camp type; Survey period: 21-24/3/2022

Q5 How likely do you think you would be infected with COVID-19 when you go to have your specimen collected at the testing station during the compulsory universal testing period?	Pro-democracy camp supporters	Non-pro-democracy camp supporters #	Total
	Percentages	Percentages	Percentages
	(Base=5,262)	(Base=678)	(Base=6,323)
Very likely	45.3%	18.7%	29.1%
Somewhat likely	33.2%	21.7%	26.9%
Half-half	17.0%	28.6%	23.3%
Somewhat unlikely	1.3%	16.3%	10.6%
Very unlikely	0.8%	8.1%	5.2%
Don't know / hard to say	2.4%	6.7%	5.0%
Total	100.0%	100.0%	100.0%
Mean values	4.2	3.3	3.7
Standard error of mean	<0.1	<0.1	<0.1
Median	4.0	3.0	4.0
<i>Refuse to answer</i>	<i>1</i>	<i>0</i>	<i>1</i>
Net value (Likely- Unlikely)	+76.4%	+16.0%	+40.2%

Including pro-establishment camp supporters, centrist supporters, no political inclination / politically neutral / do not belong to any camp

Appendix 4: Survey questionnaire (21-24/3/2022)

We Hongkongers & Community Health Survey

Hong Kong Public Opinion Research Institute is politically neutral. We welcome different opinions. All personal data will be kept strictly confidential. You can fill in the questionnaire again to express your latest views. When we need to work on the data, your last submission will be used. For enquiries, please email us at panel@pori.hk.

Last updated: xxxx-xx-xx

Tentative next update: xxxx-xx-xx

***Required**

Eligibility Confirmation

Are you a Hong Kong resident aged 12 or above (i.e., currently residing in Hong Kong)? *

- Yes
- No

We Hongkongers Series

Have you ever been confirmed to have COVID-19?

(including a positive result from a rapid test)

- Yes, fully recovered
- Yes, not yet fully recovered
- No

Assume that you and your family living with you have been infected with COVID-19 and have to undergo home quarantine. Which of the following best describes the current state of your household supplies (e.g., food, medications and test kits)?

- Having all the supplies needed
- Having most of the supplies, and what is missing is not that important
- Having most of the supplies, but what is missing is important
- Lacking a lot of supplies
- Not sure what is needed / don't know / hard to say

Assuming that the government has decided to implement compulsory universal testing, how much do you support or oppose the implementation of the following measures at the same time?

(Randomise the measures)

	Strongly support	Somewhat support	Half-half	Somewhat oppose	Strongly oppose	Don't know / hard to say
Require people to take rapid tests daily						
Restrict people from going out unnecessarily						
Require all confirmed patients to be admitted to isolation facilities or hospitals (instead of home quarantine)						

How much will your household income be affected if people are restricted from going out during the compulsory universal testing period?

- Highly affected
- Somewhat affected
- Slightly affected
- Not affected
- Don't know / hard to say

How likely do you think you would be infected with COVID-19 when you go to have your specimen collected at the testing station during the compulsory universal testing period?

- Very likely
- Somewhat likely
- Half-half
- Somewhat unlikely
- Very unlikely
- Don't know / hard to say

Community Health

How likely do you think it is that you will contract novel coronavirus pneumonia over the next one month?

(Please select the closest answer)

- | | | |
|--|----------------------------------|--|
| <input type="radio"/> 0% chance (Certainly not) | <input type="radio"/> 20% chance | <input type="radio"/> 70% chance |
| <input type="radio"/> 0.001% chance (1 in 100,000) | <input type="radio"/> 25% chance | <input type="radio"/> 80% chance |
| <input type="radio"/> 0.01% chance (1 in 10,000) | <input type="radio"/> 30% chance | <input type="radio"/> 90% chance |
| <input type="radio"/> 0.1% chance (1 in 1,000) | <input type="radio"/> 35% chance | <input type="radio"/> 100% chance (Certainly will) |
| <input type="radio"/> 1% chance (1 in 100) | <input type="radio"/> 40% chance | <input type="radio"/> _____ % chance |
| <input type="radio"/> 5% chance (1 in 20) | <input type="radio"/> 45% chance | <input type="radio"/> Don't know / hard to say |
| <input type="radio"/> 10% chance (1 in 10) | <input type="radio"/> 50% chance | |
| <input type="radio"/> 15% chance | <input type="radio"/> 60% chance | |

Do you think the regulation prohibiting gatherings of more than a specific number of people in public places should be completely lifted unconditionally in Hong Kong?

- Yes, the ban should be lifted unconditionally → [Skip questions related to this regulation](#)
- No, it should depend on the epidemic situation
- Don't know / hard to say

For reference, there are 5,845 newly confirmed cases on March 10, 2022

How many newly confirmed cases each day should there be before it would be appropriate to prohibit gatherings of more than 2 people?

(The pandemic should be at its worst)

- Number of newly confirmed cases each day: _____
- Don't know / hard to say

How many newly confirmed cases each day should there be before it would be appropriate to prohibit gatherings of more than 4 people?

- Number of newly confirmed cases each day: _____
- Don't know / hard to say

How many newly confirmed cases each day should there be before it would be appropriate to prohibit gatherings of more than 8 people?

- Number of newly confirmed cases each day: _____
- Don't know / hard to say

How many newly confirmed cases each day should there be before it would be appropriate to prohibit gatherings of more than 16 people?

- Number of newly confirmed cases each day: _____
- Don't know / hard to say

If necessary, please list combinations of [number of cases & number of people allowed in gatherings] that you think is appropriate in the field below:

After how many days of zero infection do you think the group gathering ban should be lifted altogether?

_____ day(s)

How satisfied or dissatisfied are you with the government's performance in handling novel coronavirus pneumonia?

- Very much satisfied
- Somewhat satisfied
- Half-half
- Somewhat dissatisfied
- Very much dissatisfied
- Don't know / hard to say

Other Opinions

Generally speaking, how satisfied or dissatisfied are you with the current in Hong Kong?

(Randomise the three conditions)

	Very much satisfied	Somewhat satisfied	Half-half	Somewhat dissatisfied	Very much dissatisfied	Don't know / hard to say
Political condition						
Economic condition						
Livelihood condition						

Personal Information

This section is about personal information. If you have already provided relevant information in this survey series and have nothing to add or update, you may skip these questions. We will use the past data you provided in this survey series for analysis.

- I have already provided my personal information, and has nothing to add or update ([skip questions on personal information](#))
- Provide / update personal information now

Gender

- Male
- Female
- Other

Age

- _____ years old
- 12 - 14
- 15 - 17
- 18 - 19
- 20 - 24
- 25 - 29
- 30 - 34
- 35 - 39
- 40 - 44
- 45 - 49
- 50 - 54
- 55 - 59
- 60 - 64
- 65 - 69
- 70 or above

Educational attainment

(The highest level attended, regardless of whether you have completed the course, including what you are attending)

- Primary or below
- Lower secondary (Secondary 1 to 3)
- Upper secondary (Secondary 4 to 7 / DSE / Yi Jin)
- Tertiary: non-degree course (including diploma / certificate / sub-degree course)
- Tertiary: bachelor degree course
- Tertiary: postgraduate school or above

Occupation

(Owner / self-employed / freelance / part time / civil servant are not valid answers, please answer according to the job nature or content)

- Administrator and professional
- Clerical and service worker

- Production worker
- Student
- Home-maker / housewife
- Retired person
- Unemployed / between jobs / other non-employed
- Other: _____

Which of the following best describes your political inclination?

(Randomise the four camps)

- Localist
- Pro-democracy camp
- Centrist
- Pro-establishment camp
- Other: _____
- No political inclination / politically neutral / do not belong to any camp
- Don't know / hard to say

End of Questionnaire

Thank you for completing the survey. For enquiries, please email us at panel@pori.hk.